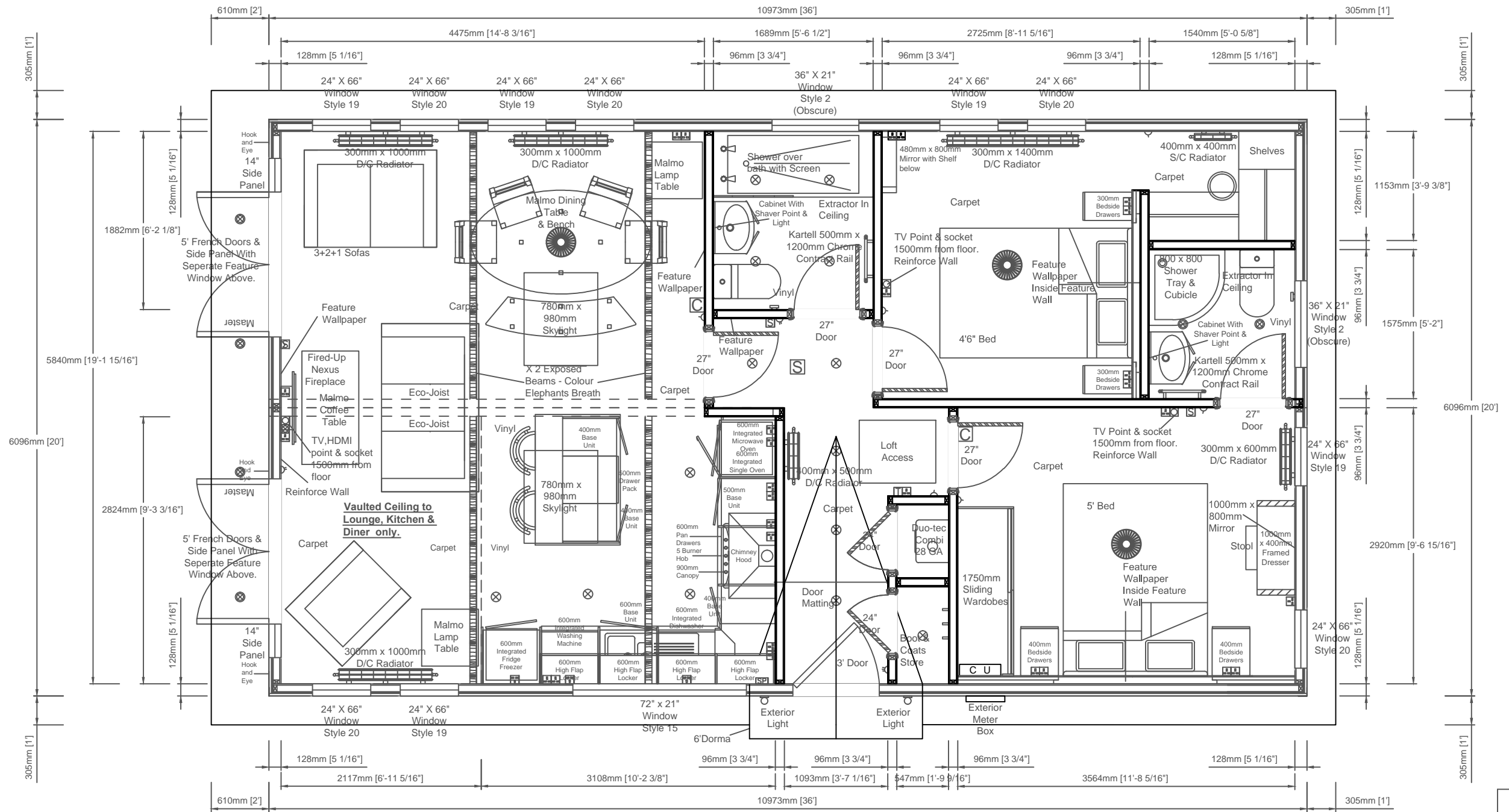


Elevations Are For Illustrative Purposes Only



Room Sizes		
Rooms	Length	Width
Lounge/ Diner	14'9"	19'2"
Kitchen	10'3"	9'4"
Bathroom	5'7"	6'3"
Bedroom 1	11'9"	9'7"
Bedroom 2	9'0"	9'4"
Ensuite	5'1"	5'2"
Wardrobe	5'1"	3'10"



Unit 4, Pytchley Lodge Road Industrial Estate, Kettering, Northants NN15 6JQ
 Tel: 01536 518513 Fax: 01536 523438
 Email: sales@prestigeparkandleisurehomes.com
 Visit our website: www.prestigeparkandleisurehomes.com

Prestige Contemporary 36' x 20' (10.97m x 6.09m)
 2 Bed En-Suite W/I/W

Customers Signature;

Date;

Date:		This home is designed in accordance with BS3632	
Scale:	Relative	Legend	
Drawn:		△ Light Switch	⊕ Exterior Tap
Code:		○ Pull Card Switch	⊞ TV Point
Dwg No:		⊘ Batten Holder	⊞ Phone Point
Serial No:		⊙ Globe Light	⊞ HDMI Point
		⊗ Exterior Light	⊞ Thermostat
		⊙ Downlight	⊞ CO ₂ Alarm
		⊞ Single Socket	⊞ Smoke Alarm
		⊞ Double Socket	⊞ Radiator
		⊞ Spur Socket	⊞ Consumer Unit
		⊞ Switching Plate	⊞ Exterior Meter Box

Rev	Date	By	Description

Notes;
 • Timber Ogee Door Casings

This plan is a guide and should be used for illustrative purposes only