

Bulletin
681.05-3NE
January 2016

NOR'EAST™

CONTROLS



SINGLE SEATED CAGE VALVES

SERIES 8100 MODEL 8105



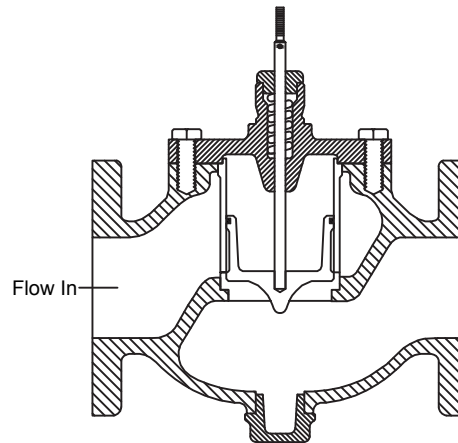
Previously manufactured by
Dezurik® and Honeywell®

Description:

The model 8105 valve combines the advantages of cage valve construction with a pneumatic actuator for low-maintenance and high performance service. The spring-type actuator provides either direct or reverse action as specified.

Accessories:

- Pneumatic and electro-pneumatic positioners
- Top-mounted handwheel (direct-acting only)
- Micro Switch precision switches
- Solenoids
- Air sets



SPECIFICATIONS

Actuator

Type	Pneumatic, diaphragm-actuated type 05. Direct or reverse acting with non-reversible body.
Construction	Anodized aluminum diaphragm cases and yoke.
Diaphragm Material	Molded of flexible Neoprene and convoluted to retain a constant effective area through the total stroke. Ambient temperature range of -20° to 160°F (-29° to 71°C).
Effective Diaphragm Material	Direct acting: 40 in ² (258 cm ²) Reverse acting: 38 in ² (245 cm ²)
Actuator Stem	Zinc-plated steel.
Spring	Totally enclosed and corrosion resistant. Ranges: 3 to 15 psig (21 to 100 kPa) standard. For other ranges, see Table 1.
Air Pressure (Air-to-diaphragm)	Normal: 18 or 25 psig (124 or 172 kPa). Maximum: 35 psig (241 kPa) 25 psig (172 kPa)
Air Connections	1/4" NPT.

Body

Type	Single-seated, straight-through, balanced cage type, non-reversible.
Material	Cast Iron
Sizes	Flanged ends: 2.5, 3, 4, 5 and 6" (86, 80, 100, 125 and 160mm)
Ratings	Cast iron with flanged ends: 125 and 250 lb. ANSI B16.1 in all sizes

Bonnet

Type	Bolted to body. Temperatures range is 32° to 353°F (0° to 178°C) for 125 lb. valves, and 32° to 400°F (0° and 204°C) for 250 lb. valves.
Packing	Spring loaded PTFE v-ring.

Trim

Material	Plug and cage: 304 stainless steel. Seal: Spring-loaded PTFE.
Plug	Balanced plug with seating surface at bottom and PTFE seal at top. Plug slides inside cage and opens characterized ports in cage.
Cage	Supplied with equal percentage or modified linear characteristics. Seating surface machined into cage. Cage is clamped into body by bonnet.
Valve Travel	1.5" (40mm)

FLOW COEFFICIENTS

Cv/Kv Values

Valve Size	Equal Percentage	Modified Linear
2.5" 65mm	75 65	75 65
3" 80mm	102 88	116 100
4" 100mm	145 125	178 154
5" 125mm	260 225	318 275
6" 150mm	305 264	390 337

Note: Cv values = Flow in GPM of water at 1 psi pressure drop.
Kv values = Flow in M³/hour of water at 100 kPa pressure drop.

ORDERING DATA

Please Specify:

- Valve Model 8105
- Body rating
- Size
- Packing
- Trim material
- Accessories

ACTUATOR SHUT-OFF CAPABILITIES

Maximum Pressure Differentials in Closed Positions, psi/kPa

Trim	Valve Size				
	<u>2.5"</u> 65mm	<u>3"</u> 80mm	<u>4"</u> 100mm	<u>5"</u> 125mm	<u>6"</u> 150mm
Bronze	<u>50</u> 345	<u>50</u> 345	<u>50</u> 345	<u>50</u> 345	<u>50</u> 345
304 Stainless Steel	<u>150</u> 1030	<u>150</u> 1030	<u>150</u> 1030	<u>150</u> 1030	<u>150</u> 1030

Note: Maximum pressure differentials with all springs ranges in closed position is 150 psi (1030 kPa)
Refer to "Packing" in the specifications selection for temperature-pressure limits.

MAXIMUM LEAKAGE RATE*

Air-to-Close (Spring-to-Open), % of Value Cv

Air Supply psi kPa	Spring Range psi kPa	Valve Size				
		<u>2.5"</u> 65mm	<u>3"</u> 80mm	<u>4"</u> 100mm	<u>5"</u> 125mm	<u>6"</u> 150mm
<u>18</u> 120	<u>3 - 15</u> 21 - 103	<u>0.01</u> 0.07	<u>0.01</u> 0.07	<u>0.01</u> 0.07	<u>0.04</u> 0.28	<u>0.04</u> 0.28
	<u>5 - 13</u> 34 - 90	<u>0.01</u> 0.07	<u>0.01</u> 0.07	<u>0.01</u> 0.07	<u>0.02</u> 0.14	<u>0.02</u> 0.14
<u>25</u> 172	<u>3 - 15</u> 21 - 103	<u>0.01</u> 0.07	<u>0.01</u> 0.07	<u>0.01</u> 0.07	<u>0.01</u> 0.07	<u>0.01</u> 0.07
	<u>5 - 13</u> 34 - 90	<u>0.01</u> 0.07	<u>0.01</u> 0.07	<u>0.01</u> 0.07	<u>0.01</u> 0.07	<u>0.01</u> 0.07

Air-to-Open (Spring-to-Close), % of Value Cv

Air Supply psi kPa	Spring Range psi kPa	Valve Size				
		<u>2.5"</u> 65mm	<u>3"</u> 80mm	<u>4"</u> 100mm	<u>5"</u> 125mm	<u>6"</u> 150mm
<u>18</u> 120	<u>3 - 15</u> 21 - 103	<u>0.01</u> 0.07	<u>0.01</u> 0.07	<u>0.01</u> 0.07	<u>0.04</u> 0.28	<u>0.04</u> 0.28
	<u>5 - 13</u> 34 - 90	<u>0.01</u> 0.07	<u>0.01</u> 0.07	<u>0.01</u> 0.07	<u>0.02</u> 0.14	<u>0.02</u> 0.14
	<u>3 - 15</u> 48 - 124	<u>0.01</u> 0.07	<u>0.01</u> 0.07	<u>0.01</u> 0.07	<u>0.01</u> 0.07	<u>0.01</u> 0.07

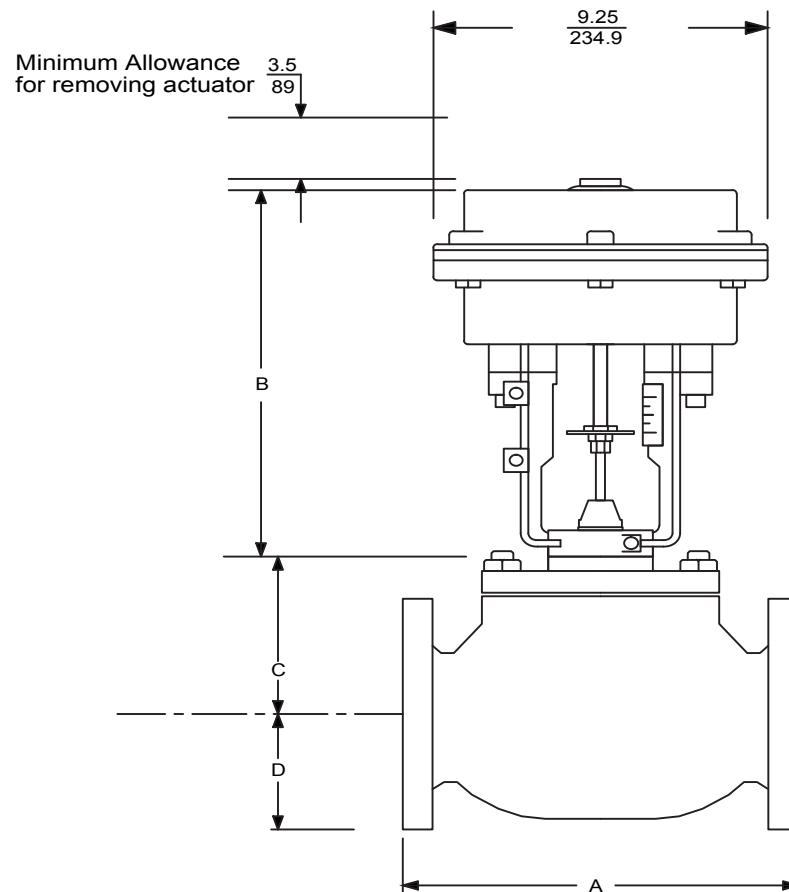
* For pressure up to 150 psi (1030 kPa)

DIMENSIONS

Flanged Ends

Valve Size	A		B	C	D	
	Iron 125	Iron 250			Iron 125	Iron 250
<u>2.5"</u> 65mm	<u>9.5</u> 241	<u>11.5</u> 292	<u>20.38</u> 518	<u>4.63</u> 188	<u>3.5</u> 88	<u>3.75</u> 95
<u>3"</u> 80mm	<u>11.0</u> 279	<u>12.5</u> 318	<u>20.63</u> 524	<u>4.88</u> 124	<u>3.88</u> 98	<u>4.13</u> 104
<u>4"</u> 100mm	<u>13.0</u> 330	<u>14.5</u> 368	<u>21.38</u> 543	<u>5.63</u> 143	<u>4.56</u> 115	<u>5.00</u> 156
<u>5"</u> 125mm	<u>15.0</u> 381	<u>16.75</u> 425	<u>23.13</u> 588	<u>7.38</u> 187	<u>5.44</u> 138	<u>5.50</u> 139
<u>6"</u> 150mm	<u>16.5</u> 419	<u>18.63</u> 473	<u>23.13</u> 588	<u>7.38</u> 187	<u>6.30</u> 160	<u>6.30</u> 160

Inch
Millimeter



NOTES:

NOTES:

Guarantee

Products, auxiliaries and parts thereof, of Allagash International Group, LLC, a manufacturer of Nor' East Controls, are guaranteed for a period of one year from the date of shipment against defective workmanship and material only, when properly installed, operated and serviced in accordance with Allagash International Group, LLC recommendations. Replacement for items of Allagash International Group, LLC manufacture will be made free of charge if proved to be defective within such time. No claim for special or consequential damages, transportation, or labor shall be allowed. Purchaser shall be solely responsible for determining suitability for use and in no event shall Allagash International Group, LLC be liable in this respect. Equipment or parts manufactured by others but furnished by Allagash International Group, LLC will be repaired or replaced, only to the extent provided in the original manufacturer's warranty to Allagash International Group, LLC. Allagash International Group, LLC does not guarantee resistance to corrosion, erosion, abrasion or other sources of failure, nor does Allagash International Group, LLC guarantee a minimum length of service. Failure of the purchaser to give prompt written notice of any alleged defect under this guarantee forthwith upon its discovery, or use and possession thereof after an attempt has been made and completed by someone other than Allagash International Group, LLC or an authorized representative to remedy defects therein, or failure to return products or parts for replacement as herein provided, of failure to install, operate, and maintain said products or parts according to instructions provided by Allagash International Group, LLC, of failure to pay the entire contract price when due, shall be a waiver of all rights under these representations.

The foregoing guarantee shall be null and void, if, after shipment from our factory, the item is modified in any way or component of another manufacturer, such as but not limited to; an actuator is attached to the item by valves & controls other than a Allagash International Group, LLC.

Factory Service Personnel. All orders accepted shall be deemed accepted subject to this guarantee, which shall be exclusive of any other previous guarantee, and this shall be the only effective guarantee or warranty binding on Allagash International Group, LLC, anything to the contrary contained in the purchase order, or represented by any agent or employee of Allagash International Group, LLC, in writing or otherwise, notwithstanding, including but not limited to implied warranties.

THE FOREGOING OBLIGATIONS ARE IN LIEU OF ALL OTHER OBLIGATIONS AND LIABILITIES INCLUDING WARRANTIES OF FITNESS OR MERCHANTABILITY OR OTHERWISE, EXPRESSED OR IMPLIED IN FACT OR BY LAW, AND STATE NOR'EAST CONTROLS AND EXCLUSIVE LIABILITY AND PURCHASER'S EXCLUSIVE REMEDY FOR ANY CLAIM IN CONNECTION WITH THIS SALE OR FURNISHING OF SERVICES, GOODS, OR PARTS, THEIR OWN DESIGN, SUITABILITY FOR USE, INSTALLATION OR OPERATION.

Limitation of Liability

In no event shall Allagash International Group, LLC, a Manufacturer of Nor' East Controls be liable for any direct, indirect, special or consequential damages whatsoever, and Allagash International Group, LLC liability, under no circumstances, will exceed the contract price for the goods and/or services for which liability is claimed. Any action for breach of contract must be commenced within 1 year after the cause of the action has occurred.



70 Ingersoll Drive, Portland ME 04103 . phone 207-781-8831 . fax 207-781-8830

ALLAGASHINTERNATIONAL.COM

Sales and Service

Allagash International Group, LLC representatives are located in major cities throughout the world. For the name of the representative nearest you, email us: sales@allagashinternational.com

Allagash International, Group LLC reserves the right to incorporate our latest design and material changes without notice or obligation. Design features, materials of construction and dimensional data, as described in this bulletin, are provided for your information only and should not be relied upon unless confirmed in writing by Allagash International, Group LLC. Certified drawings are available upon request.