



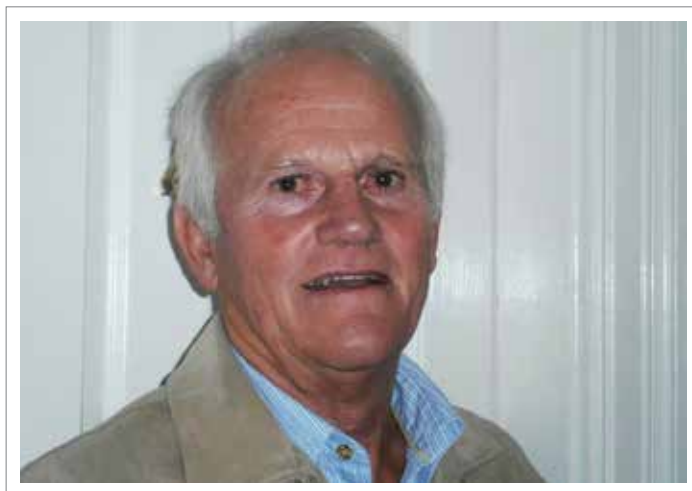
ROSS

DEMOLITION

Founded in 1896



- Keeping Abreast With The Best In The World
- *On Time Every Time*



Chairman's Report

I am proud to report on 1st March 2015, amidst huge public interest, Ross Demolition successfully imploded the Tulip Hotel in the central business district of Cape Town. Since the spectacular implosion of the Athlone cooling towers we have once again established ourselves as a highly professional company that will execute an implosion successfully, adhering to the strict laws and regulations in Africa.

In order to keep abreast with the best in the world we started 2016 by buying in some of the latest equipment available. Our plant increased with new 70-ton excavators, an 80-ton lowbed trailer and 15m³ Mercedes Benz trucks thereby extending the company's vision to have equipment required to execute the best work in our field, in the shortest time period.

Staff changes in 2016 saw Phillip Redelinghuis leave our employ and John Ross step in to head up our salvage division and manage our three second hand building material yards situated in Lansdowne, Maitland and Stikland.

At head office, David Brooks rejoined Ross Demolition in the position of Senior Contracts Manager after working in London and Africa for nine years.

Edd Loftus returned after twelve years in Zambia to take up the position of Surveyor/Supervisor.

These changes have contributed to making our management stronger, leaner and meaner!

As an overview of our company I am pleased to report we have accreditation with the Building Industrial Bargaining Council (BIBC) and our international operations are continuing to expand successfully. We hold a strong position in the marketplace to flawlessly execute any contract in our fields of implosion, demolition, bulk excavation, rock excavation, asbestos removal and mine rehabilitation. Our lowbed facilities enable us to transport plant anywhere in Africa making it possible to service all contracts on the continent. We believe we offer the best service, reliable machinery and dedicated staff **which/who upholds/ uphold ?** our motto of "On time, every time".

The year ahead appears to be demanding but we are holding our own with the best machinery, excellent people skills, fair prices and by efficiently completing contracts on time.

We look forward to working with you in the very near future.

Robert Ross
Chairman

Implosion of the Tulip Hotel in Strand Street, Cape Town, a sequel to the Athlone Towers which we imploded in 2012. The Tulip Hotel was a 14 storey building in the CBD. Another success story for Ross Demolition.



One of the biggest excavations in rock with no blasting due to the close proximity of surrounding buildings. These rock breakers broke out 40,000m³ of blue Malmesbury rock, we completed the job on time as usual.



Demolition in the CBD making way for expansion in the city of Cape Town - This building, known as Electricity House, situated on the corner of Hout & Bree streets, Cape Town.



On time, every time

Ross Demolition successfully completed the deepest excavation in the Claremont area - making way for a 6-level underground parking garage.



Clifton Terraces, demolition and excavation into the mountainside stretching from Victoria Road up to Kloof Road, Clifton, a massive excavation successfully completed “on time”.

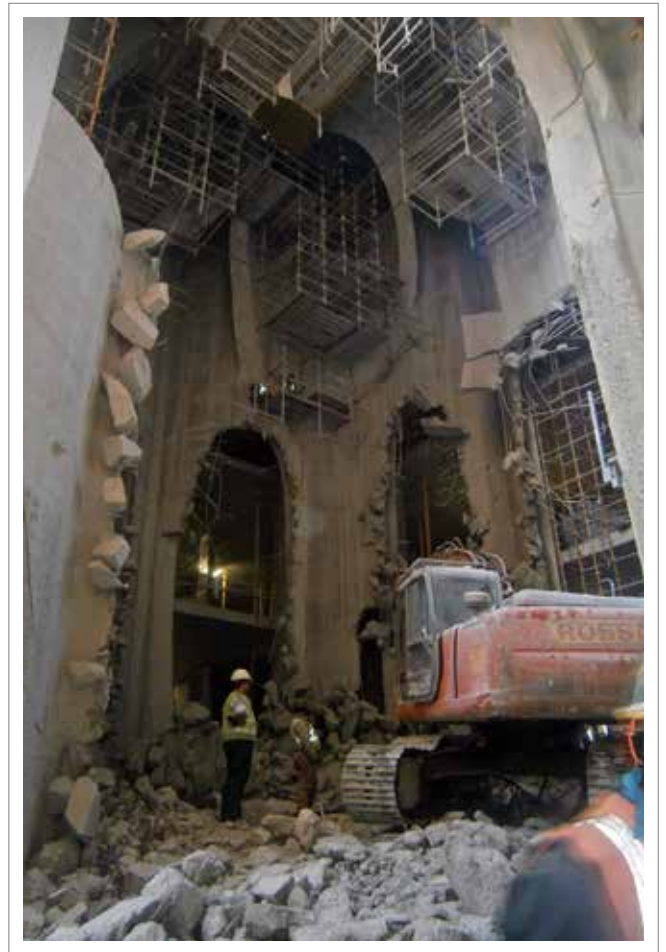


Once again, fighting with the rockface - deep excavation in hard rock at the top of Cape Town.



On time, every time

Over the past two years we have been diligently executing an internal demolition of the historic V&A Waterfront grain silos, making way for a modern art museum.



Some of our latest specialised equipment

As time progresses, demolition becomes a more specialised field. Equipment becomes more advanced and expensive and the level of entry very difficult to achieve. In order to stay ahead of the game, we constantly seek out the latest and best equipment to optimise our performance.



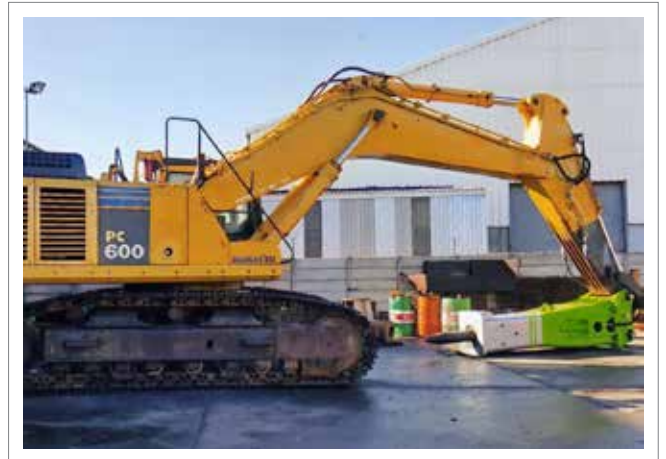
- 1 - Rock breakers - large and medium sized
- 2 - Concrete pulverizers
- 3 - Long-reach cutter
- 4 - Concrete saw
- 5 - Concrete scrubber
- 6 - Crusher

Our crusher has been a great success because of the quality of crushed material it produces. This material is recycled and used as subbase to build roads. We pride ourselves in crushing 98% of all demolition rubble instead of dumping it at municipal landfill sites.



Machinery purchased during the first six months of 2016

- 80-ton lowbed with a 650hp Volvo horse, to supplement our fleet of 15-ton to 65-ton lowbeds
- 15m³ Mercedes Benz Trucks
- Rock breakers
- Excavators



From the past to the present

Reintroducing David Brooks and Edd Loftus, both left Ross Demolition for a number of years and have returned making our management team even stronger.



David Brooks (Senior Contracts Manager)



Edd Loftus (Surveyor/Supervisor)

Staff moving forward in our company



Joseph Coster (Joah) has moved up in the ranks into the position of Workshop Manager.



Antoine Nyindo is in charge of our security and together with his dedicated teams does an excellent job.

Longstanding, dedicated members of staff



Ivy Ross Johl - PA to the CEO 45 years



Patrick Nefu - Operator 30 years



Hammington Mateza - Operator 26 years



Rudi Le Roux - Group Accountant/
Financial Manager 26 years

Health and Safety

The company takes the health and safety of each job very seriously. We outsource our H&S to SmartSafe which is managed by Carel Barnard and I am happy to be able to report that we have had no work injuries or loss of life during the year.



Ross Demolition is an accredited member of the BIBC (Building Industry Bargaining Council). ▶

Asbestos Removal

Ross Demolition have been active in the field of asbestos removal for many years and the high demand for this service during recent years has hugely increased our company's turnover.

For our asbestos projects, a qualified AIA (Approved Inspection Authority), draws up the asbestos work plan, does initial air monitoring before we proceed, interim air monitoring during



the removal and finally issues a Clean Air Certificate. The asbestos license is required to be renewed on an annual basis.

We follow strict rules and regulations preparing our asbestos teams to perform at their best. Staff go through rigorous training, and must have regular medical check-ups and chest X-rays.





Ross Second-hand Building Materials

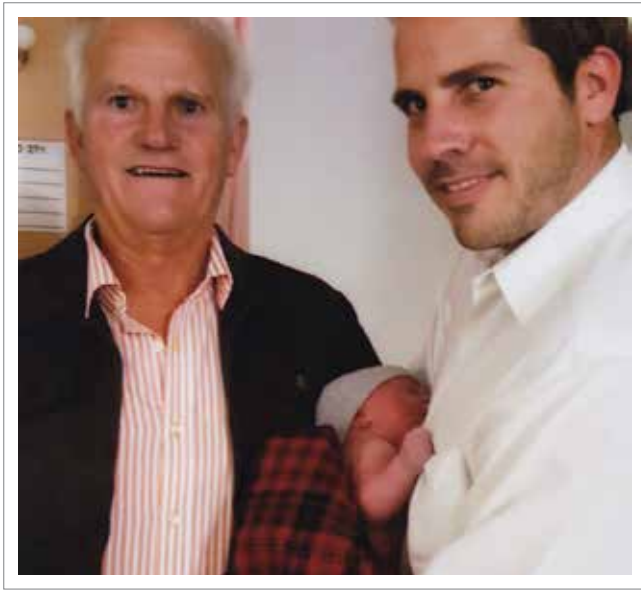
John Ross has transferred to our Lansdowne office to take charge of Ross Salvaging Operations and manage the second-hand building material yards. They carry a large amount of stock items salvaged from buildings we demolish, for sale at competitive prices. Our aim is to recycle as much as possible and minimise the landfill problem.

The salvage yards are situated at:

- Induland Crescent, Lansdowne - Telephone 021 692 1275
- Artreco Road, Maitland - Telephone 021 511 3527
- Farad Street, Stikland - Telephone 021 945 2714



Ross News



John Ross and Simone have been blessed with a bonny son, Alexander. Born on 22 April 2016 weighing 3.65kg, Alexander is destined to be the 5th generation CEO of our long-standing family business, we welcome him into the Ross Clan.



Female drivers - a new phenomenon in the demolition industry. Debbie Hartley was trained at our in-house driving school in one of our new 15m³ Mercedes Benz Trucks.



Because of our keen interest in rugby, Ross Demolition is pitching to be the proud sponsor of False Bay R.F.C in 2018, one of the leading rugby teams in the Western Province.



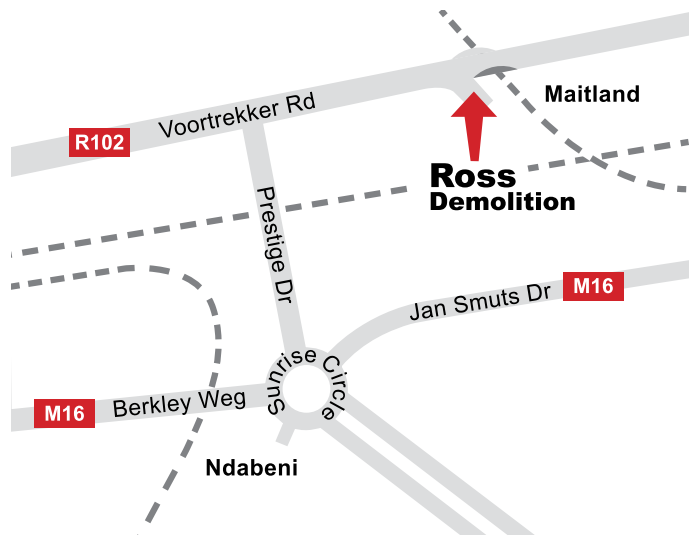
We specialize in:

- Demolition
- Retaining front facades
- Internal demolition
- Earth moving
- Implosion
- Removing steel structures
- Rock blasting
- Equipment hire
- Mine rehabilitation
- Asbestos and hazardous materials removal

All projects are planned and supervised by a qualified engineer.

Contact Us:

3 Artreco Road, Maitland 7405
 PO Box 179, Woodstock 7915
 Telephone: 021 511 1204
 Facsimile: 021 511 1205
 Email: ivy@rossdem.co.za



98% OF RUBBLE GENERATED BY ROSS DEMOLITION IS RECYCLED

MBA
50 Years

B-BBEE
Level 4

Operating
Since 1896
120 Years

Active
Across Africa

International
Demolition Assoc.
30 Years

Environmentally
Conscious & Active