



# wsp

**Wadsworth Security Products**

# The WSP System

**Masterkeying is a way of coding a system of locks to give authorised personnel access to a series of locks to which they have authority to enter without the need for them to carry more than one key.**

The illustration shown is a simple system where the Grand Master Key (GM) will allow access to all the locks in the system.

The master keys will only allow access to the locks in their particular part of the system.

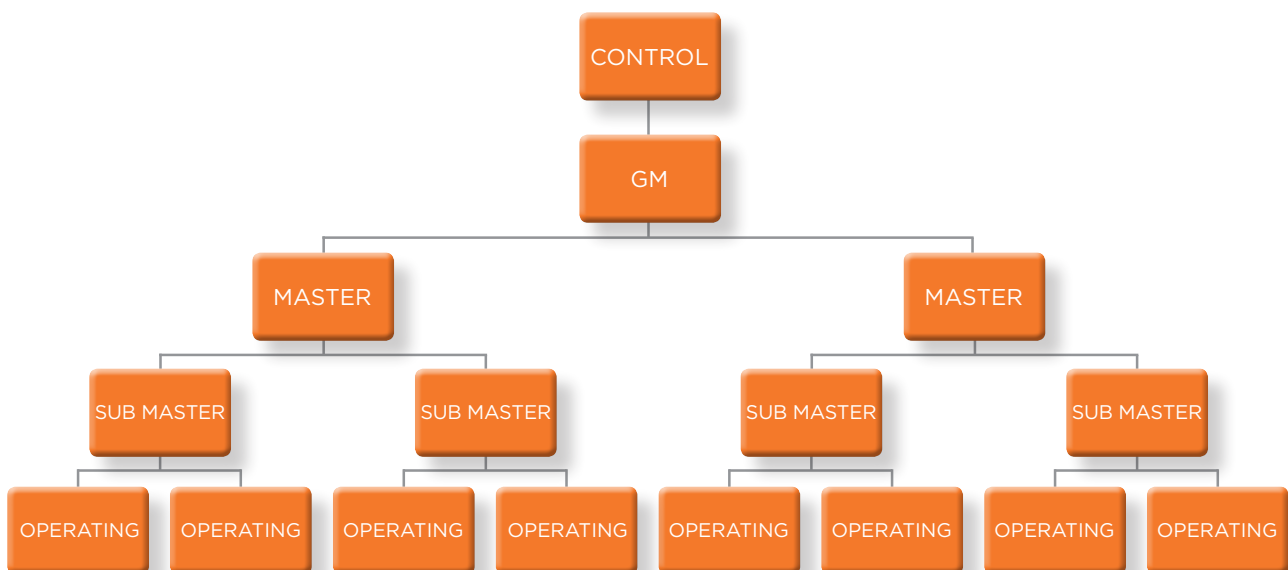
Submaster keys have been provided which in this case will probably mean separate departments under an overall departmental head (e.g. Sales and marketing departments under an overall Sales Director).

Individual locks in each particular section will have keys which are common only to one particular lock.

Master keying can be as simple or as complex as required. The hierarchy diagram below is a basic Master key system. We can add Subsubmasters,

Janitor keys, reverse suited cores and more. Each Masterkey system is designed individually to suit our customers needs.

Wadsworth offers a masterkey system that uses interchangeable cores to maintain the systems security. This is accomplished by the use of a special key called a control key which when inserted into the lock removes the core from its housing. Since the core contains all the pin tumblers, it is the core that determines what key(s) will operate the lock. If the control key is used to remove a core from its housing and then a different core is installed in the housing, this will have changed the combination on which that lock will operate.





## Rim Cylinder

Machined from solid bar stock and available in satin brass and satin chrome finishes. This cylinder is used in standard rim cylinder applications and is interchangeable with most other manufacturer's rim locks.

**1E72**

## Mortice Cylinder

Machined from solid bar stock and available in Satin brass and satin chrome finishes. This cylinder is used in standard, screw-in cylinder mortice applications. Will function with many other manufacturer's locks by use of different cams and cylinder rings (call us for advice). Additional cylinder security is provided by a set screw that mounts diagonally in the cylinder wall and, when tightened, holds the cylinder securely in the housing.

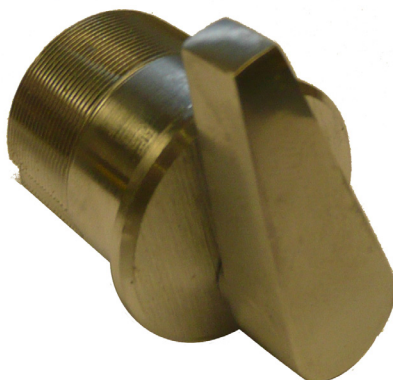
**1E76**



## Mortice Thumbturn

Machined from solid bar stock and available in Satin brass and satin chrome finishes. This thumbturn is used in standard, screw-in cylinder applications. Will function with many other manufacturer's locks by use of different cams and cylinder rings (call us for advice).

**1E7A4**



Note: Please contact the sales office for advice on the correct cam required for the lockcase in use. Other finishes are available on request.

# Oval Profile Cylinders



## 8E7H5

Keyed on one side only  
42.5mm



## 8E7H6

Keyed on both sides  
42.5mm / 42.5mm



## 8E7H7

Keyed on one side with a  
thumbturn on the inside  
42.5mm / 42.5mm



## 8E7H8

Keyed on one side with a special turnbar inside,  
for particular use by the aged or handicapped  
42.5mm / 42.5mm

Available in satin chrome and polished brass. Special finishes available on request

# Scandinavian Cylinders



## 8E7A5

Keyed on one side only  
39mm



## 8E7A6

Keyed on both sides  
39mm / 39mm





## 8E7E4

Keyed on one side only  
43mm / 10mm



## 8E7E5

Keyed on both sides  
43mm / 43mm



## 8E7E6

Keyed on one side with a thumbturn  
on the inside  
T42mm / K45mm



## 8E7E6-TB

Keyed on one side with a special turnbar  
inside, for particular use by the aged  
or handicapped  
T42mm / K45mm

**Cylinders are available in a range of special lengths and offsets. Contact us for more information**

## Classroom Cylinders



## 8E7H7-CR

For use with a UK oval lock case. The lock  
case can be locked or unlocked by key from  
the outside but can only be unlocked by  
thumbturn from inside, not locked  
T42.5mm / K42.5mm



## 8E7E6-CR

For use with a euro profile lock case. The lock  
case can be locked or unlocked by key from  
the outside but can only be unlocked by  
thumbturn from inside, not locked  
T42mm / K45mm

**Available in satin chrome and polished brass. Special finishes available on request**

# WSP Lock Cases



## Mortice Deadlock

Case Depth:	63mm / 76mm / 101mm
Case Height:	108mm
Case Thickness:	14mm
Backset:	45mm / 57mm / 82mm

### WSP1



## Mortice Sashlock

Case Depth:	63mm / 76mm / 101mm
Case Height:	108mm
Case Thickness:	14mm
Backset:	45mm / 57mm / 82mm

### WSP2



## Mortice Deadlocking Latch

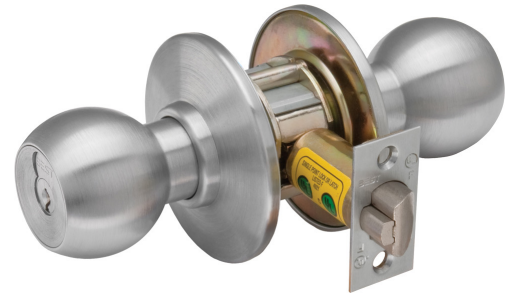
Case Depth:	76mm
Case Height:	108mm
Case Thickness:	14mm
Backset:	57mm

### WSP3 DL

**Note: Other lock cases available on request**



- Quick, economical rekeying with the WSP interchangeable core.
- Knobs/Levers machined from brass or bronze bar stock.
- Rotating knob/lever face provides for easy hand of door change without removing the knob/lever.
- No keeper hole on keyed knobs/levers for added security.
- Keyed knob/lever removable only after the core is removed.
- The optional breakaway feature prevents the lockset from being overpowered by a wrench.
- Spin free knob feature permits the lock to be operated only by use of a key.
- Friction insert inside rose resists loosening.
- Steel retractor with low friction bearings for smooth, wear resistant operation.
- Long bearing length in chassis for smooth, wear resistant operation.



How to order sample:

9K	3	7	AB	15	A	STK	626
Series	Backset	Core Housing	Function Code	Lever/Knob Style	Rose Style	Strike Package	Finish
<b>6K</b> - Medium Duty Knob	<b>2</b> - 2 3/8" (60mm ) 6K & 7K only	<b>0</b> - Keyless	<b>AB</b> - Entrance	<b>4</b> - Round Knob	<b>A</b> - Large Round	<b>STK</b> - Standard	<b>606</b> - Satin Brass
<b>7K</b> - Medium Duty Lever	<b>3</b> - 2 3/4" (70mm)	<b>7</b> - 7-pin housing accepts all cores	<b>D</b> - Storeroom	<b>6</b> - Tulip Knob	<b>C</b> - Small Round	<b>S3</b> - High Security	<b>626</b> - Satin Chrome
<b>8K</b> - Heavy Duty Knob	<b>4</b> - 3 3/4" (101mm)		<b>R</b> - Classroom	<b>14</b> - Curved Return			
<b>9K</b> - Heavy Duty Lever	<b>5</b> - 5" (127mm)			<b>15</b> - Contour angle return			

Function	Description	Outside Lever		Inside Lever	
		Latched by	Locked by	Unlocked by	Locked by
<b>AB</b> - Entrance 	<ul style="list-style-type: none"> <li>• Rotating the inside lever OR</li> <li>• Rotating the outside lever - only when the inside push button is out OR</li> <li>• Turning the key in the outside lever</li> </ul>	<ul style="list-style-type: none"> <li>• Pushing the inside button OR</li> <li>• Pushing and turning the inside button. Turning the button keeps the outside lever locked until the button is turned back</li> </ul>	Turning the key in the outside lever (only when the button is not turned) OR Closing the door (only when the button is not turned)	Cannot be locked	Always unlocked
<b>D</b> - Storeroom 	<ul style="list-style-type: none"> <li>• Turning the Key in the outside lever OR</li> <li>• Rotating the inside lever</li> </ul>	• Always fixed	Cannot be unlocked	Cannot be locked	Always unlocked
<b>R</b> - Classroom 	<ul style="list-style-type: none"> <li>• Rotating the inside lever OR</li> <li>• Turning the key in the outside lever OR</li> <li>• Rotating the outside lever when not locked by key</li> </ul>	Turning the key in the outside lever	Turning the key in the outside lever	Cannot be locked	Always unlocked

Note: Other functions are available. Please contact the sales office for more information

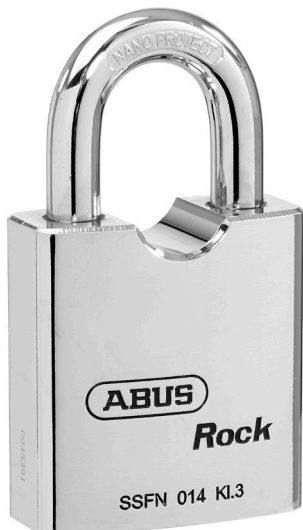
# Padlocks



Shackle Diameter	Core Housing	Shackle Code	Function	Options
<b>11B</b> (1/4" / 6.3mm)	7 - 7 pin housing all WSP cores	<b>2</b> (3/4" / 19mm)	<b>T</b> - key retained	<b>M3</b> Chain (13 1/2" / 34cm) <b>WC</b> Weather Cover
<b>21B</b> (5/16" / 7.9mm)		<b>22</b> (1 1/2" / 38mm)	<b>L</b> - Non-key retained	
<b>41B</b> (3/8" / 9.5mm)		<b>72</b> (2" / 50mm)		
		<b>82</b> (4" / 101mm)		

## European Graded Padlock

This range of padlock is for particularly heavy use, and meets CEN grade 4.



### 83/60

Body Width:	60mm
Clearance Width:	25mm
Clearance Height:	38mm
Shackle Diameter:	11mm
Body Depth:	28mm
Overall Height:	105mm

### 83/60HB60

Body Width:	60mm
Clearance Width:	25mm
Clearance Height:	60mm
Shackle Diameter:	11mm
Body Depth:	28mm
Overall Height:	128mm



1. No exposed mounting screws standard on 82T/83T.
2. Full 1" throw deadbolt
3. Free-turning, wrench-resistant, tapered cylinder ring
4. 82T/83T-solid extruded brass or bronze cylinder 72T/73T-solid cast zinc with brass or bronze shell

5. Simple installation; self-aligning and reversible
6. May be keyed into existing WSP masterkeyed system
7. The original interchangeable core permits instant, economical re-lock

**Note: A latch is available for the K, M and L function. Please contact the sales office for more information.**

83T	7	K
Backset	Core Housing	Function Code
82T 2 3/8" (60mm)	7 - 7 pin housing all Best cores	K - Thumbturn
83T 2 3/4" (70mm)		M - Double Keyed L - Keyed one side S - Classroom KL - Closet



Function	Deadbolt operated by:
<b>K - Turnknob</b> 	<ul style="list-style-type: none"> <li>•Turning the key in the outside cylinder, OR</li> <li>•Turning the inside turn lever</li> </ul>
<b>L - One way deadbolt</b> 	<ul style="list-style-type: none"> <li>•Turning the key in the outside cylinder; the inside cylinder is blank</li> </ul>

Function	Deadbolt operated by:
<b>M - Double Cylinder</b> 	<ul style="list-style-type: none"> <li>•Turning the key in the inside or outside cylinder</li> </ul>
<b>S - Classroom</b> 	<ul style="list-style-type: none"> <li>•Turning the key in the outside OR</li> <li>•Turning the inside turn lever only retracts the deadbolt</li> </ul> <p><i>Note: Can't throw the deadbolt from inside</i></p>
<b>KL - Closet</b> 	<ul style="list-style-type: none"> <li>•Turning the turn lever only</li> </ul>



## Code Lock

Heavy duty code lock for the toughest applications. Key override option is available on all units as standard for emergency access. This is a retro-fit unit to easily replace Simplex Unican 1000 series. 12 position keypad with audio and visual feedback. Standard battery pack will last a minimum of 65,000 cycles or 2-5 years, with an optional extended battery pack to yield twice as much as standard. Fully weather resistant for both indoor and outdoor applications.

Pin length can be varied between 3-6 digits, with a maximum of 50 individual users. All programming is through the keypad. 1 administrator PIN and 5 supervisor PINS are available.

## Keypad EZ

## Cabinet Locks

Cabinet lock to accept a removable core. Available in mortice and rim, with either a latchbolt or deadbolt.

**5L**



## 1W Electric Switch Locks

A range of electric switch locks available in various 'on-off' and momentary keyed switch functions. Circuit variations are available in single, double and triple pole.

**1W**



## Key Combinator

The key combinator is used to cut new or additional keys when required. WSP keys are cut in accordance with the original masterkeyed code with no reliance on a pattern key. As a result, inaccurate tolerances are not introduced into and compounded within the system as second, third and fourth generation keys are cut. Note: Key combinator is available for standard, premium, or Peaks systems.

### AD433

## Combining Kit

This small desk-drawer size kit contains everything necessary to combine a WSP core. It includes a complete selection of pin segments, springs, caps, a capping block, two capping pins, an ejector pin, tweezers, two standard keys and a key gauge. When securely closed, the kit may be carried in any position without mixing contents. Kits can be ordered separately or combined (1C core) & (5E cylinder).

### CD431



## Installation Service

Our in-house team has been assisting with the installation of customers' keying systems for over 20 years. Whether the need is for one lock or a new suite in a building, our installation team can install or help to install.

**Wadsworth Security Products Ltd.**  
A Division of G.S. Christopher & Co Ltd

Unit 1, Epsom Downs Metro Centre  
Waterfield, Tadworth, Surrey  
KT20 5EZ, UK  
+44 (0)1737 360512  
+44 (0)1737 370475  
sales@wadsworthsecurity.co.uk  
Company Registration 1553769