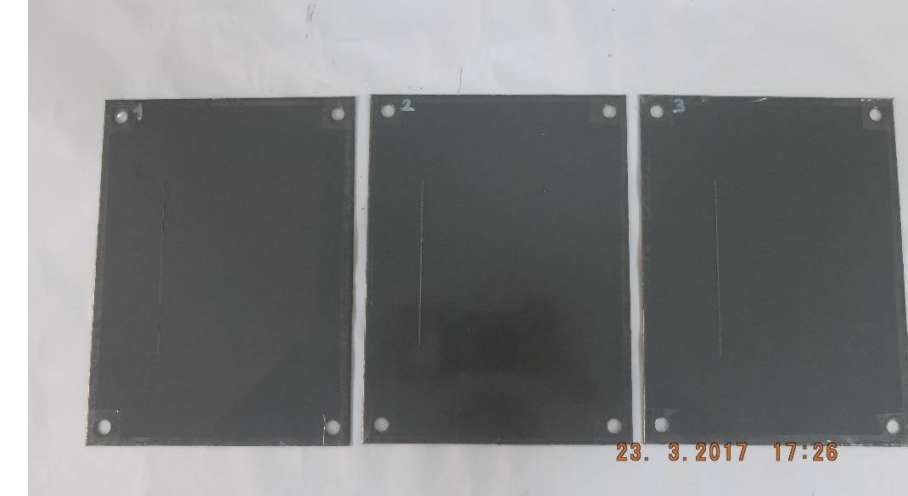


EK-1: Test Fotoğrafları

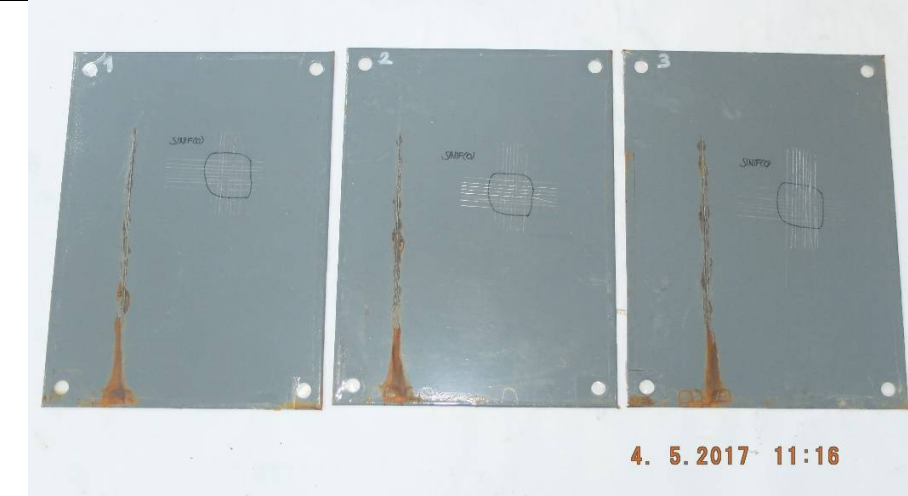
TUZ TESTİ ÖNCESİ



TUZ TESTİ KABİNİNDE İKEN



TUZ TESTİ SONRASI



TUZ TESTİ SONRASI

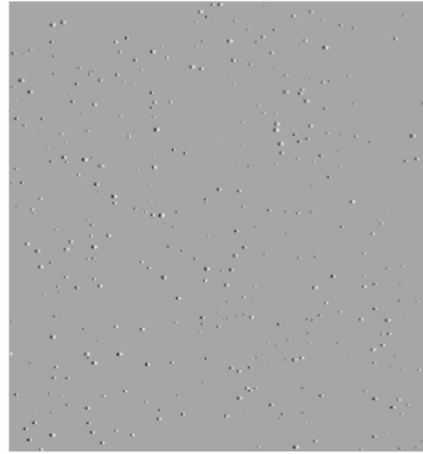


EK-2: Test standartlarında verilen referans kıyaslama fotoğrafları

1. EN ISO 4628-2 (Kabarcıklanma Derecesi)



a) Miktar (yogunluğu) 2 — 2(S2)



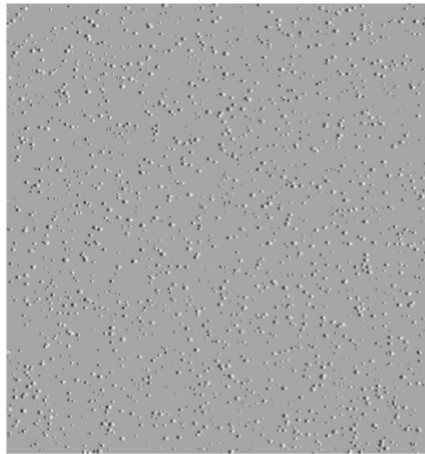
b) Miktar (yogunluğu) 3 — 3(S2)



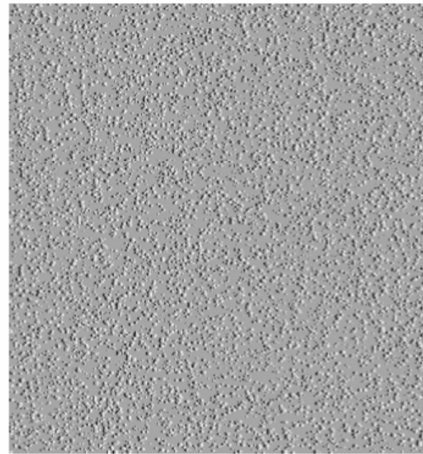
a) Miktar (yogunluğu) 2 — 2(S3)



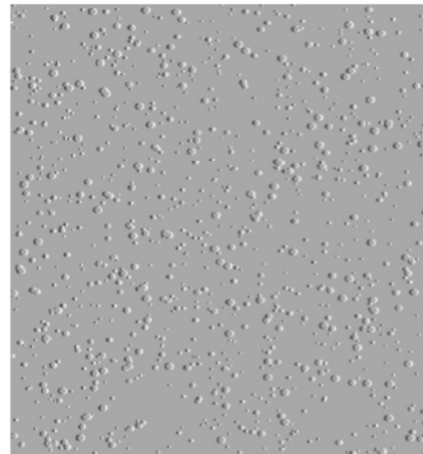
b) Miktar (yogunluğu) 3 — 3(S3)



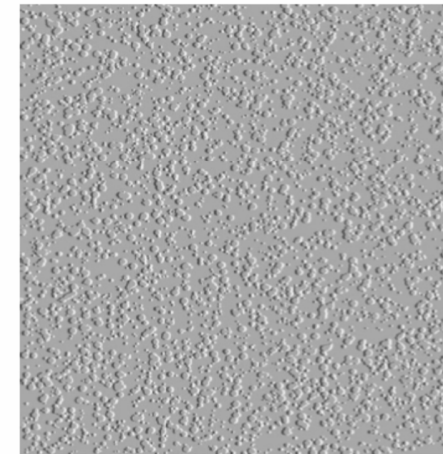
c) Miktar (yogunluğu) 4 — 4(S2)



d) Miktar (yogunluğu) 5 — 5(S2)



c) Miktar (yogunluğu) 4 — 4(S3)



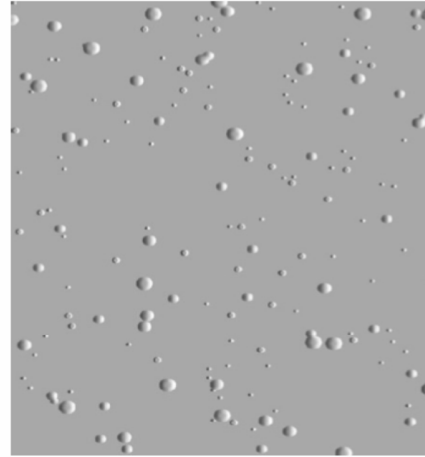
d) Miktar (yogunluğu) 5 — 5(S3)

Şekil-1: Kabarcıklanma boyutu no:2 a)az, b)orta, c) orta sıklıkta, d)sık

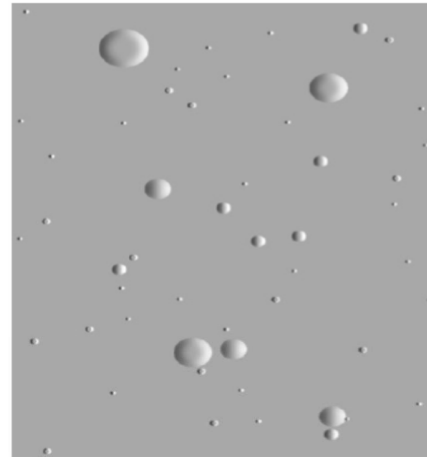
Şekil-2: Kabarcıklanma boyutu no:3 a)az, b)orta, c) orta sıklıkta, d)sık



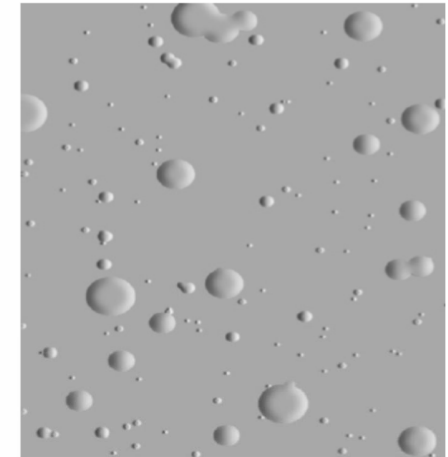
a) Miktar (yogunluğu) 2 — 2(S4)



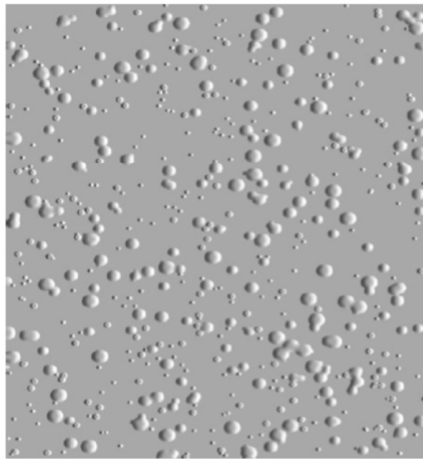
b) Miktar (yogunluğu) 3 — 3(S4)



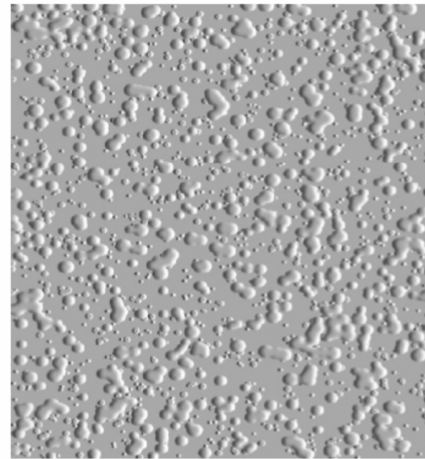
a) Miktar (yogunluğu) — 2(S5)



b) Miktar (yogunluğu) 3 — 3(S5)

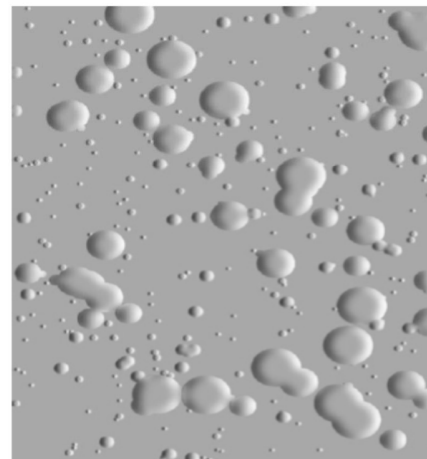


c) Miktar (yogunluğu) 4 — 4(S4)

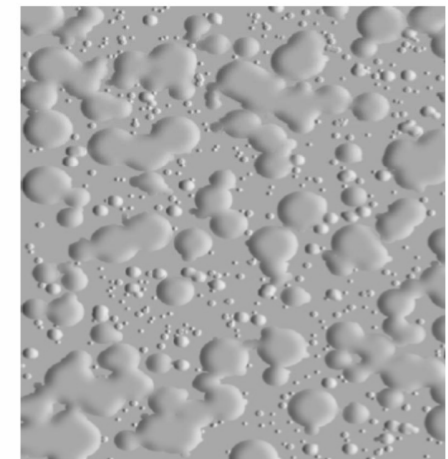


d) Miktar (yogunluğu) 5 — 5(S4)

Şekil-3: Kabarcıklanma boyutu no:4 a)az, b)orta, c) orta sıklıkta, d)sık



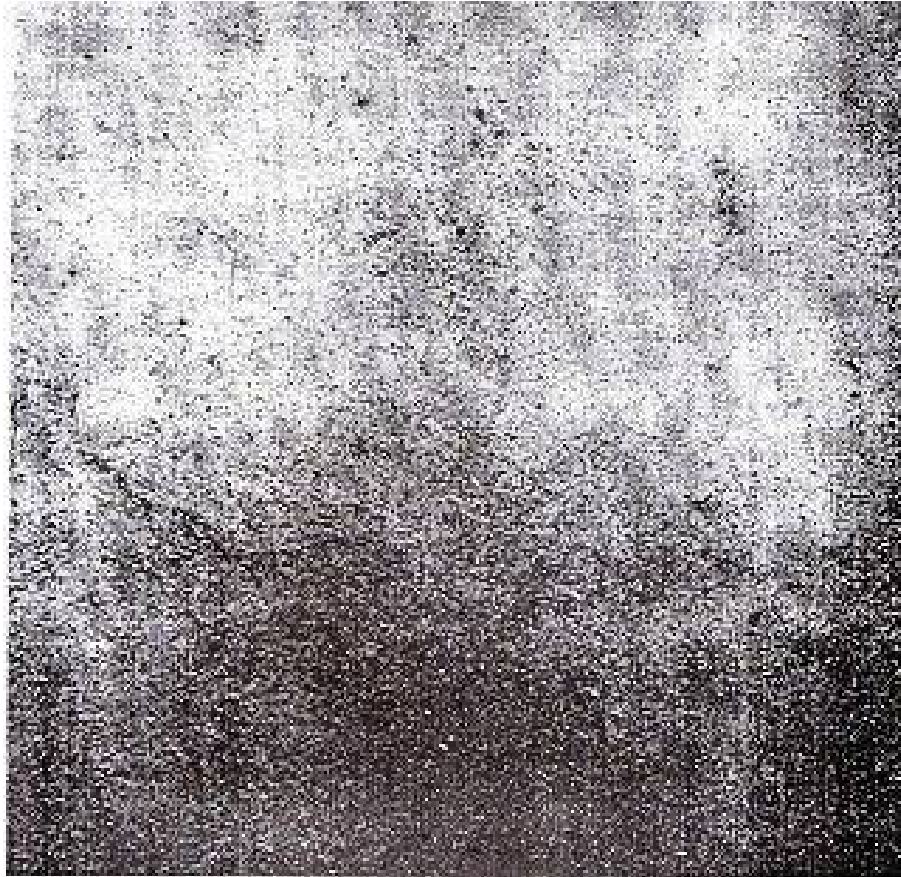
c) Miktar (yogunluğu) 4 — 4(S5)



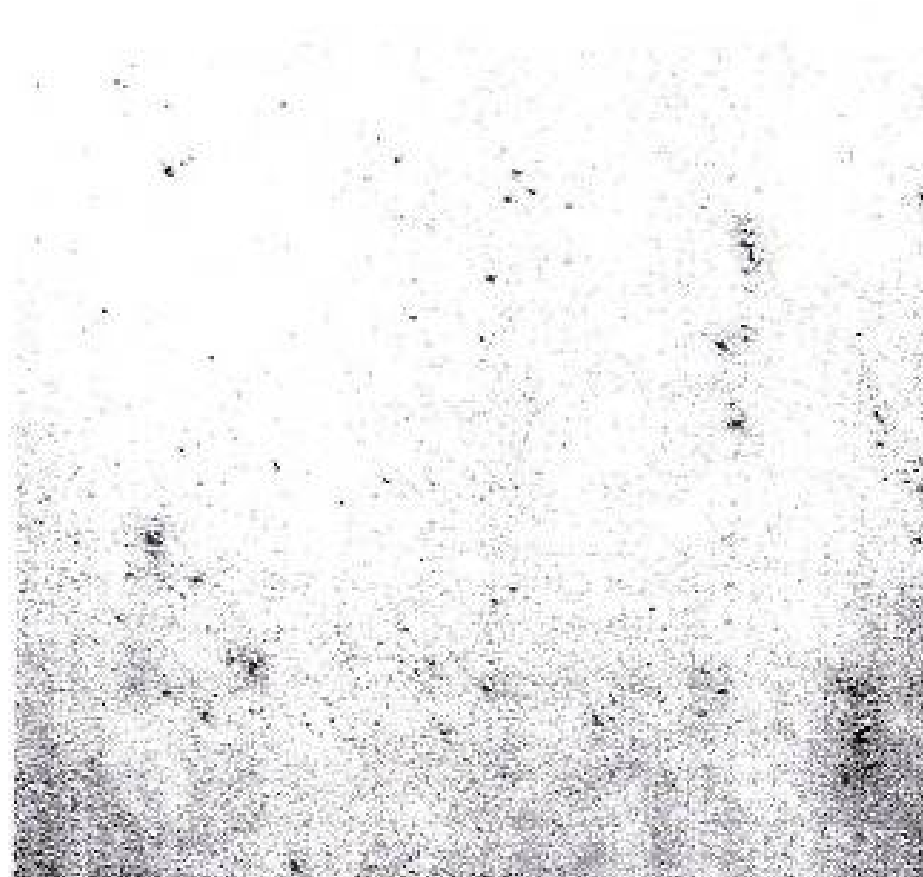
d) Miktar (yogunluğu) 5 — 5(S5)

Şekil-4: Kabarcıklanma boyutu no:5 a)az, b)orta, c) orta sıklıkta, d)sık

2. EN ISO 4628-3 (Paslanma Derecesi)



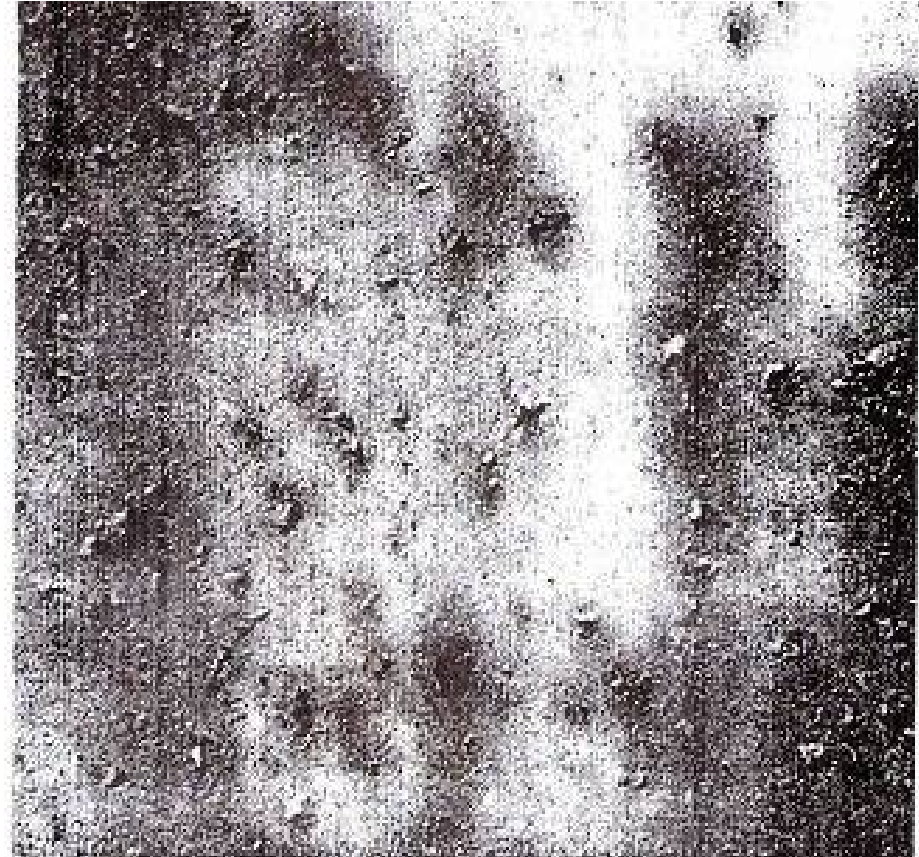
Şekil-1: Paslanma Derecesi – Ri1



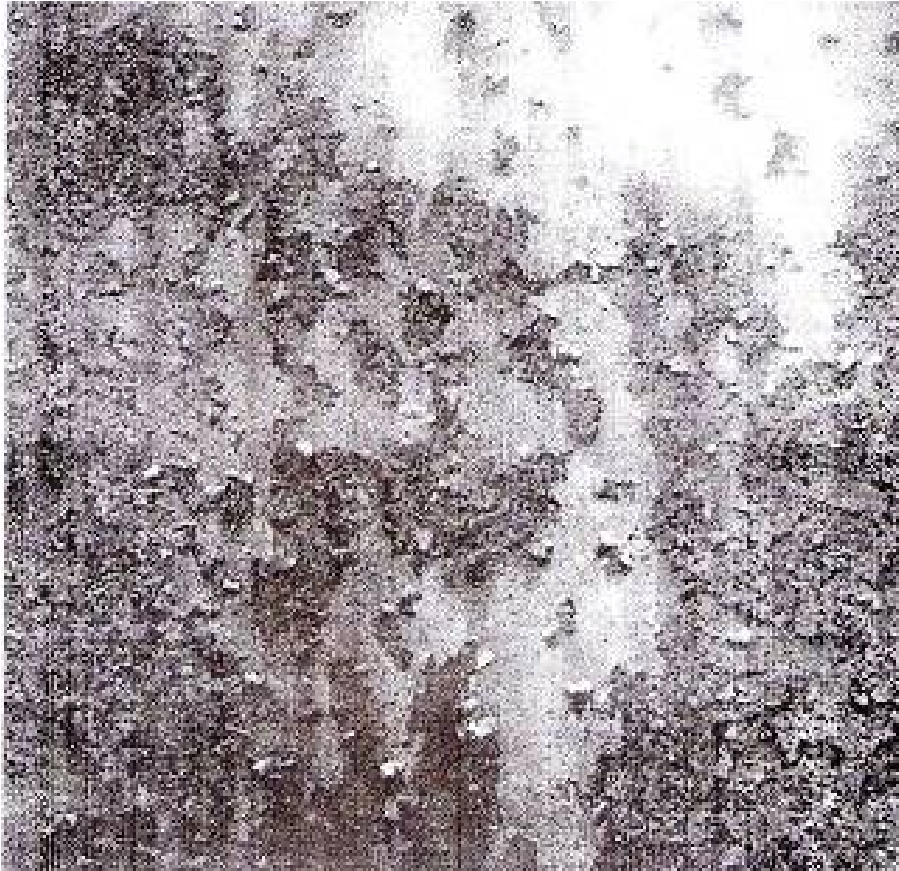
Şekil-2: Paslanma Derecesi – Ri2



Şekil-3: Paslanma Derecesi – Ri3



Şekil-4: Paslanma Derecesi – Ri4



Şekil-5: Paslanma Derecesi – Ri5