



## Z26

7.5tonne GVW  
(Category C1 driving licence)  
26M WORKING HEIGHT  
12.5M WORKING OUTREACH  
2.8M OUTRIGGER WIDTH  
UNRESTRICTED 200KG SWL  
CONTINUOUS 360° ROTATION  
AUTOMATIC OUTRIGGER  
LEVELLING

# Z26

7.5tonne GVW Cat. C1  
SPECIFICATIONS

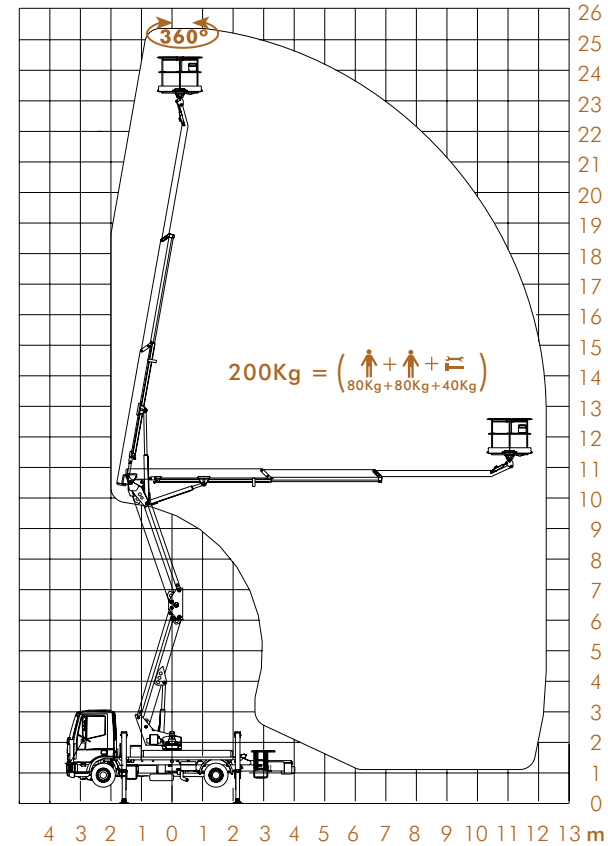
**Operating Dimensions**

Working Height	25.6m
Platform Height	23.6m
Outreach from Centre	12.5m
Outrigger Footprint	(WxL) 2.8m x 3.5m
Rotation	360° Continuous
Basket Rotation	80° + 80°
Safe Working Load	200Kg
Dimensions	1.4mx0.7mx1.1m(H)

**Closed Dimensions (transit)**

Length	7.45m
Width	2.60m
Height	3.33m
GVW 7500Kg (Iveco ML75E17k)	
Kerb Weight	7220Kg

Can be mounted on 7.5tonne GVW chassis and upwards. Iveco is standard, can be mounted on Mercedes, Renault, DAF.



The Z26 takes the highly versatile sigma/telescopic boom geometry onto a 7.5tonne chassis. Almost 26m working height with up to 12.5m of up and over outreach with zero tailswing from a narrow 2.8m outrigger width. The Z26 offers the proven 'Z' control system of its smaller relations: simple proportional controls, basket load sensing, load sensing outrigger interlocks and zero tailswing. The Z26 is also fitted with automatic self-levelling outrigger option for the UK.

