



XILAM

CROSS LAMINATED TIMBER - ENGINEERED PANELS FOR WALLS AND FLOORS
STANDARD, SPECIAL SIZES OR PRODUCED TO ACCOMMODATE BESPOKE PROJECTS

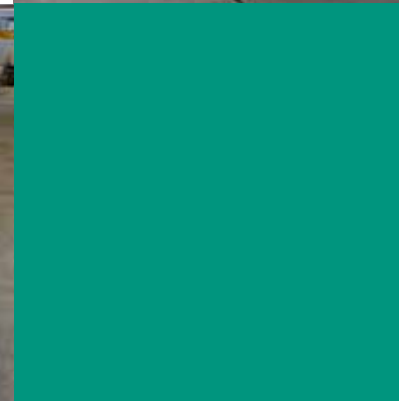
TECSOL

THE PRODUCT

XILAM Cross Laminated Timber panels are manufactured in Modolfo (PU), Italy by Albertani Corporates, at one of their modern factories, with a modern press and gluing line, in accordance with the highest of European quality standards. Their history in the field of engineered wood manufacturing and gluing, together with their experience in constructional solutions, make Albertani Corporates XILAM CLT a most reliable, safe and environmentally sound building material.

As a matter of fact, XILAM CLT panel is stable, easy and fast to install, suitable for high risk seismic zones, ecological and eco-sustainable. Furthermore, it has high thermal insulation and static performances.

Our plants manufacture wooden panels that can be cut with openings for doors and windows, together with machining to accommodate electrical systems, cuts and casings. This allows us to offer all the elements together, providing short delivery times and a range of external finishings.





XILAM CLT panels offer a great flexibility of end use, together with fast on site production techniques. Ideal for walls and roofs, they can be manufactured in different versions: custom-cut, standard or against your own bespoke drawings. The overall thickness varies from 60mm to 280mm; the number of layers vary between 3 and 7.

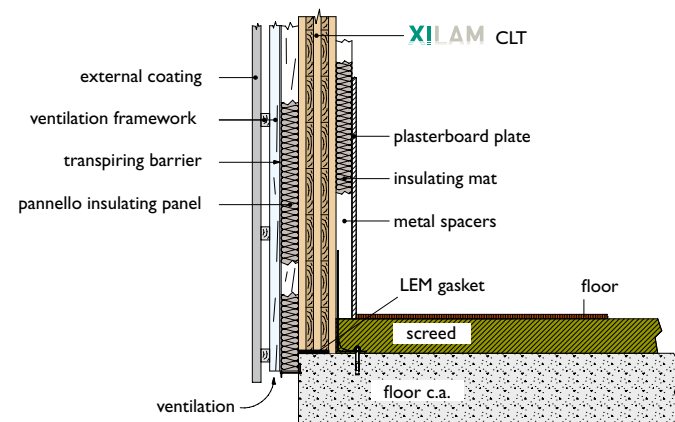
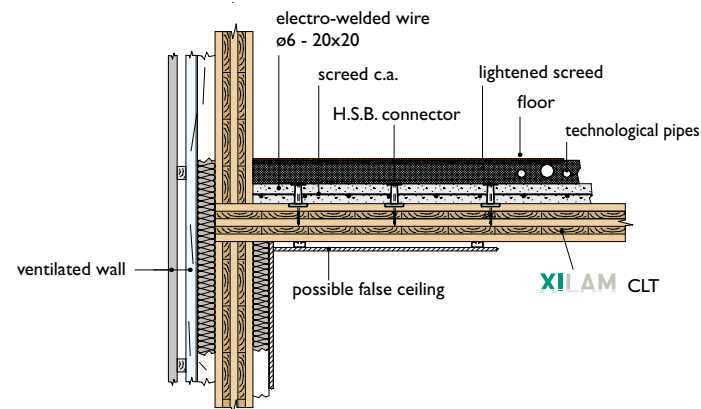
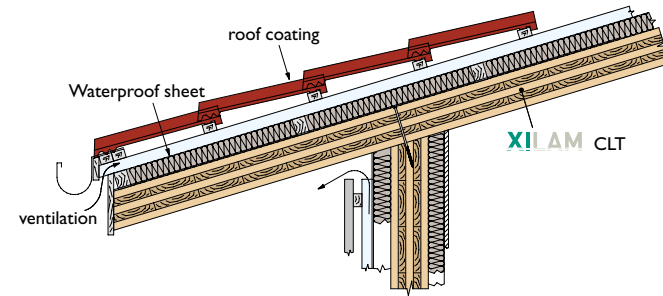
Their performance features are exceptional: high non-conducting and insulating power for a completely natural material.

Albertani Corporates, through its division ALBECASE, can also offer “turn-key” finished buildings. The same building technology of XILAM CLT panels can be seen in elegant private villas, as well as in schools, commercial structures, medical and residential buildings.

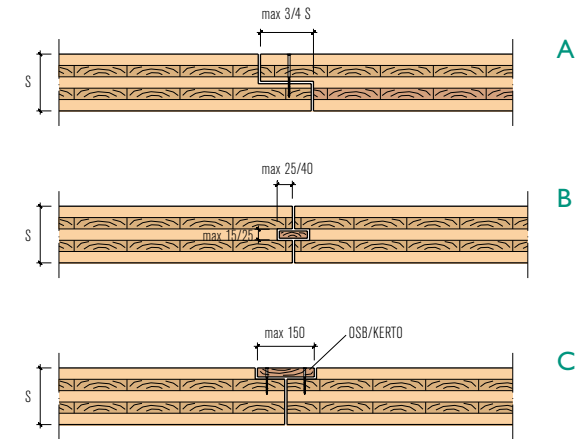


XILAM PANEL

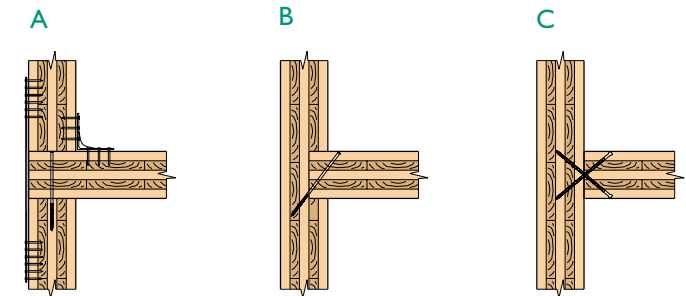
BUILDING METHODS



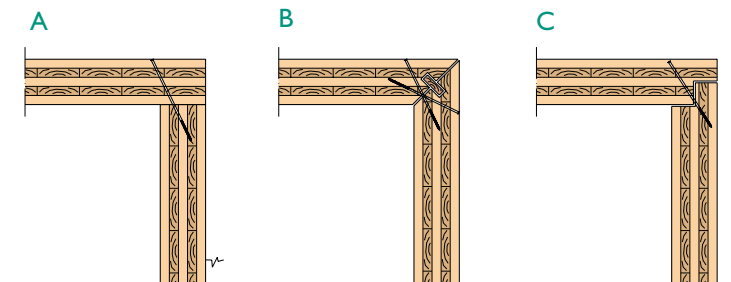
PANELS CONNECTIONS ON THE PLANE SURFACE



PANEL CONNECTIONS IN FLOOR/WALL



PANEL CONNECTIONS WITH AN ANGLE



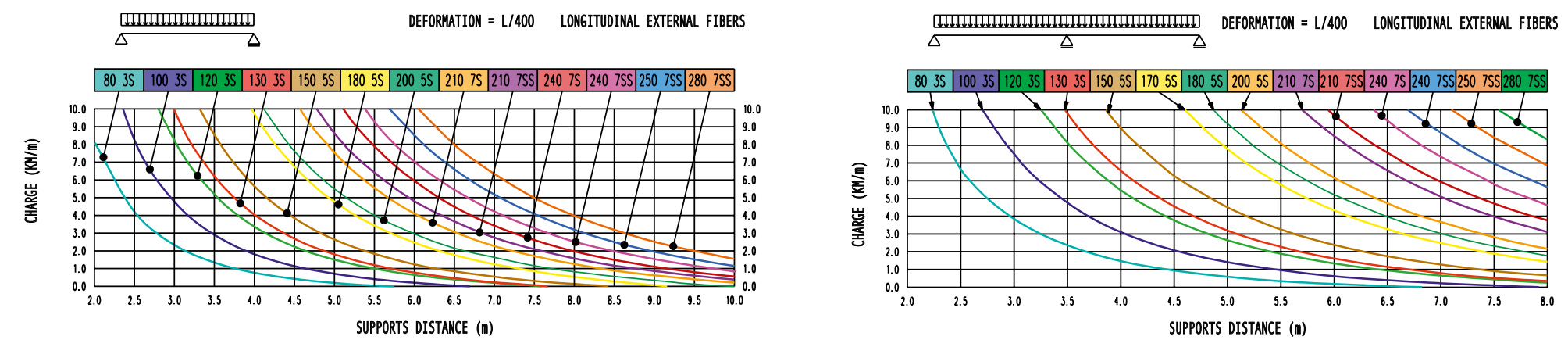
LARGE SIZE MULTI-LAYERED CLT PANEL

TECHNICAL FEATURES

Composition	90° crossed grain overlapping layers
Number of Layers	3,5,7,9 and 11 symmetrical assembly
Wood moisture	12 ± 2%
Dimension	Width ≤ 3 meters, length ≤ 18 meters, thickness from 60 to 280 mm
Shape variation	In longitudinal direction of the element: 0,010% per % of wood moisture content In transversal direction of the element: 0,025% per % of wood moisture content
Sound proofing	39 dB (thickness 168 mm)
Homologation	European Technical Approval ETA-12/0172
Wood	Spruce, Pine, Larch (on demand)
Bonding	in accordance with EN 301 Typ I
Thermal conductivity	$\lambda = 0,13 \text{ W/(m}\cdot\text{K)}$
Heat capacity	$c = 1,6 \text{ kJ/kg}\cdot\text{K}$
Radiation resistance	$\mu = 50\text{-}200$
Fire resistance	D, s2, d0
Boards Resistance Class	External layers C24 according to EN338 Internal layers C18 ≤ 30% and C24 ≥ 70% according to EN338

The features of the material for panel sizing according to EN1995-1-1 is assessed in accordance with EN338 and EN1194.

STATIC DIAGRAMS

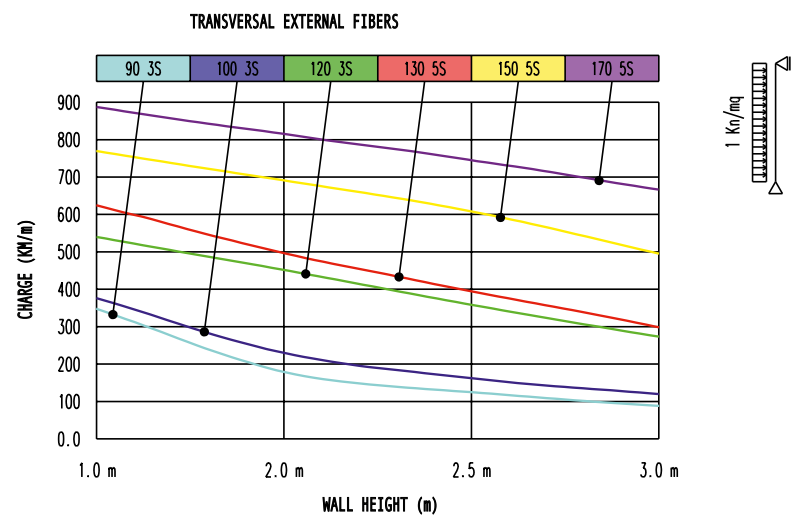


STANDARD SIZES AVAILABLE

[illegible]

Upon request the panels can be produced with 2 external layers with parallel fibers | The layer orientation can be chosen depending on the final use: longitudinal or transversal(L/T)

STATIC DIAGRAMS



NOTE

OUR WORKS



Four-floors-building in Livigno (SO-Italy),
2200 meters above sea level.

Below: under construction

Above and top: Private estate nestled in a natural park. This represents an excellent example of innovative building compared with the local construction industry. In fact, it simplifies the building process without compromising the house architecture, respecting the formal requests imposed by environmental landscapes restrictions.



In this page: the prestigious urban redevelopment project in Trento (Italy), ex-Michelin area, Le Albergo district, designed by Renzo Piano.



Beside and below:
pictures of a residential estate.



Above and top: dwellings, details of balconies and Siberian larch sunscreen, in L'Aquila (AQ-Italy).
The multilevel buildings made in Xilam have a very high seismic resistance.

> Production plants
Factories

Hermisdorf D

Mondolfo PU

Ascoli Piceno

Edolo BS

Braone BS

Bazzano AQ



Administration and legal head office
I-25125 **Brescia**
Via Corsica 143
Tel +39 030 2427893
Fax +39 030 2450903
info@albertani.com
www.albertani.com

N F P Europe Limited



Albertani UK & Irish sales office

N F P Europe Limited
Milford Villaghe Hall
Portsmouth Road
Milford
Surrey
GU8 5DS
T: 01483414291
sales@nfpeurope.co.uk

Sales department
and production plant
61037 **Mondolfo** (Pu)
Viale dell'Industria, 6
Tel +39 0721 1712004
Fax +39 0721 1712007

Certifications CE - ISO 9001 - ISO 14001



MPA MPA STUTT GART
Otto-Graf-Institut
Materialprüfungsanstalt - Universität Stuttgart



ETA - 12/0172

ARCH Legno

HABITAT Legno

TECSOL

ALBECASE

LINEA Legno