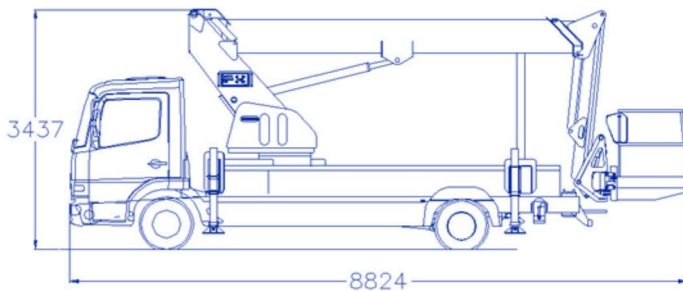
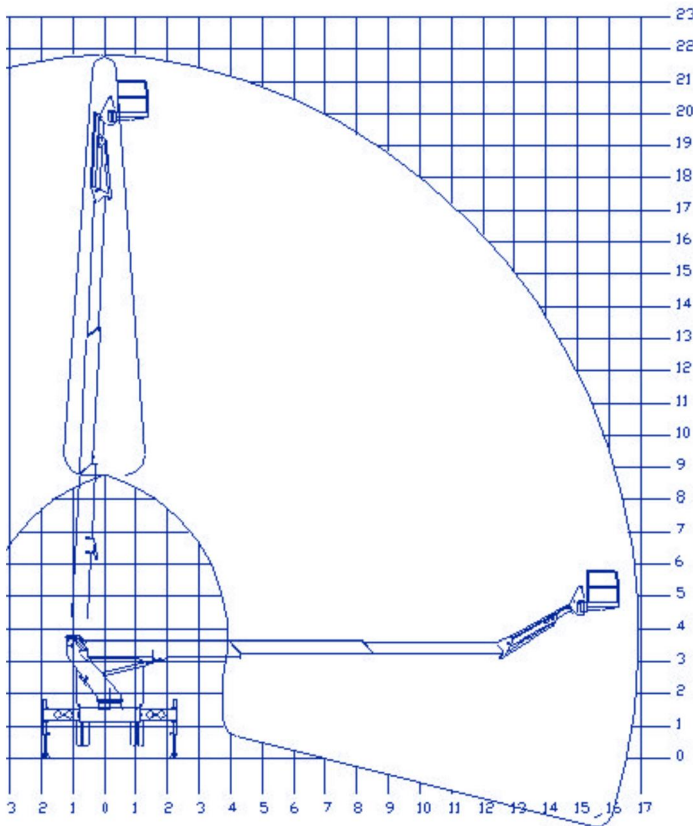


22m working height telescopic boom with jib on 7.5t+ GVW chassis cab



## 22m working height telescopic boom with jib on 7.5t+ GVW chassis cab



### OPTIONS

- Amber beacons on cab roof
- Work lights at platform
- Hi-viz warning chevrons to vehicle and/or platform
- 110v power cable chassis to cage
- Reverse alarm with night-silent facility
- Polyethylene walk-in enclosed cage
- Sign carrier facility on cage

### KEY SPECIFICATIONS

Maximum working height .....	22.0m
Horizontal reach (fully jacked).....	17.0m
Horizontal reach narrow jacked .....	10.0m
SWL in platform (3 person) .....	280kg
Platform size (1.1m high) .....	1.2 x 1.8 m
Turret rotation .....	360 deg.
Minimum vehicle GVW .....	7500kg
Typical wheelbase .....	4400mm
Stabiliser spread (full).....	4.3m
Spread in 1-side jacking mode.....	3.2m
Spread in narrow jack mode.....	2.2m
Power source.....	PTO on vehicle
Kerb weight (no crew) approx.....	7200kg

### STANDARD FEATURES

- Direct hydraulic proportional controls at cage and base
- 160 degree powered cage rotation
- Four H-section stabilisers with one-sided- and narrow jacking facility for confined areas
- Three section all steel telescopic boom
- 2.4m long jib with 125 degree working arc
- Structural quality tubular aluminium cage
- DC auxiliary power pack and emergency lowering handpump to lower the machine if engine fails
- Safety interlocks and warning lights for booms, stabilisers and PTO and emergency powerpack functions
- Warning lights and manual over-ride for 'light leg' and 'cab protection' situations

### TYPICAL VEHICLES

- Iveco 75E16 4455mm wheelbase chassis cab
- DAF LF150FA 4300mm wheelbase chassis cab