

# Screenpod™

## STARTECH

# Screening Buckets

A screening bucket that is both solid in construction and lighter in weight



[www.screenpod.co.uk](http://www.screenpod.co.uk)

## STARTECH

Screenpod STARTECH screening buckets are innovative and durable in design, by incorporating the very best wear resistant materials available in the market today. We have created a screening bucket that is both solid in construction and lighter in weight allowing fitting on a wider range of excavators and loading shovels.

To ensure the maximum performance and efficiency over a wider range of materials we fit a double drive system with 2 x heavy duty hydraulic motors to each unit as standard, changeable blade sets are available and our design ensures easy maintenance and serviceability of each unit. Startech have 3 grain sizes available as standard 16, 24 & 35mm and can offer alternative shaft configurations for screening and crushing specialist materials. Startech buckets screen a wide range of materials from Topsoil, peat, compost, mulch, even Asphalt Millings, and are used in applications from recycling of demolition and builders waste to mixing and soil stabilization.

**we build  
our products  
to last!**



Screenpod STARTECH Screening Buckets

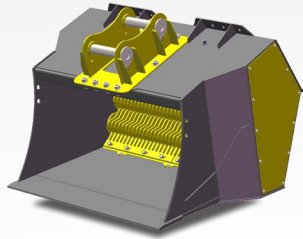




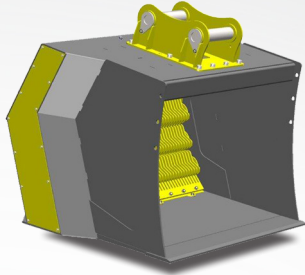
# Various shaft configurations available



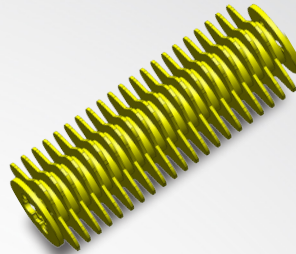
**ST3: 1500**



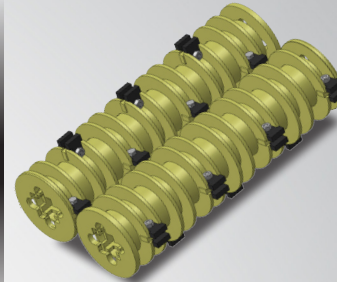
**ST3: 1700**



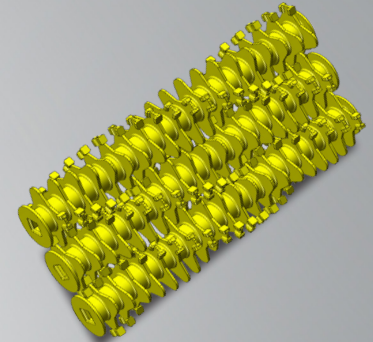
**Standard Rotor**



**Crushing Rotor: 1**



**Crushing Rotor: 2**



Model	Base Machine	Base Machine 2	Hydraulic Flow	Pressure	Volume	Volume 2	Screen Area	Dimensions			Weight
	Excavator	Loader						Min/Max	Min/Max	Iso	
<b>S3 950</b>	8-16 T	6-9 T	60-150 LPM	200/300 Bar	0.808 M3	0.895 M3	0.655 M2	1260MM	1300MM	1470MM	1100 KG
	17640- 35300 LB	13230- 19840 LB	16- 40 USG/M	2900- 4350 PSI	1.056 YD3	1.171 YD3	7.050 FT2	4'-2"	4'-3"	4'-10"	2425 LB
<b>S3 1500</b>	12- 21 T	7- 10 T	60-150 LPM	200/300 Bar	1.032 M3	0.942 M3	0.980 M2	1160MM	1710MM	1470MM	1380 KG
	26460- 46300 LB	15430- 22045 LB	16- 40 USG/M	2900- 4350 PSI	1.35 YD3	1.232 YD3	10.54 FT2	3'-10"	5'-7"	4'-10"	3042 LB
<b>S4 1500</b>	16- 25 T	9- 12 T	120- 180 LPM	200/ 300 Bar	1.141 M3	1.264 M3	1.168 M2	1300MM	1710MM	1540MM	1710 KG
	35270- 55110 LB	19840- 26460 LB	32- 48 USG/M	2900- 4350 PSI	1.492 YD3	1.653 YD3	12.572 FT2	4'-3"	5'-7"	5'- 1"	3770 LB
<b>S3 1700</b>	22- 34 T	13- 16 T	150- 300 LPM	200/ 350 Bar	1.442 M3	1.599 M3	1.171 M2	1470MM	2050MM	1740MM	2425 KG
	48500- 74960 LB	28660- 35270 LB	40- 80 USG/M	2900- 5075 PSI	1.886 YD3	2.091 YD3	12.605 FT2	4'- 10"	6'- 9"	5'- 8"	5346 LB
<b>S4 1700</b>	28- 36 T	15- 20 T	150- 300 LPM	200/ 350 Bar	1.427 M3	1.515 M3	1.405 M2	1570MM	2050MM	1810MM	2675 KG
	61730- 79370 LB	33070- 44090 LB	40- 80 USG/M	2900- 5075 PSI	1.866 YD3	1.982 YD3	15.123 FT2	5'- 2"	6'- 9"	5'- 11"	5897 LB
<b>S3 2300</b>	28- 40 T	15- 20 T	150-300 LPM	200/ 350 Bar	1.957 M3	2.164 M3	1.582 M2	1470MM	2650MM	1740MM	2850 KG
	61730- 88180 LB	33070- 44090 LB	40- 80 USG/M	2900- 5075 PSI	2.560 YD3	2.830 YD3	17.028 FT2	4'- 10"	8'- 8"	5'- 8"	6283 LB
<b>S4 2300</b>	30- 45 T	18- 33 T	150- 300 LPM	200/ 350 Bar	1.873 M3	2.055 M3	1.896 M2	1570MM	2650MM	1810MM	3150 KG
	66140- 99210 LB	39680- 72750 LB	40- 80 USG/M	2900- 5075 PSI	2.450 YD3	2.688 YD3	20.408 FT2	5'- 2"	8'- 8"	5'- 11"	6945 LB

**Note:** weights are subject to change depending on specification

# Screenpod™

## STARTTECH

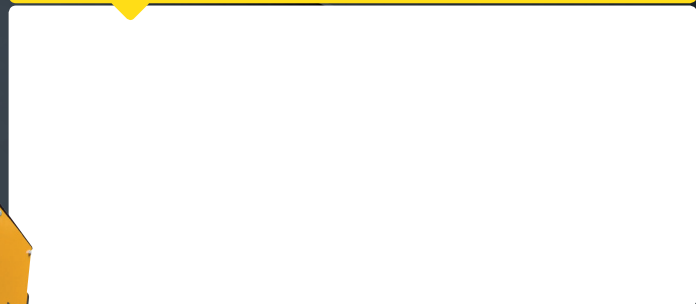
### Contact Screenpod:

30 Tullyodonnell Road  
Rock  
Dungannon  
County Tyrone  
Northern Ireland  
BT70 3JE  
United Kingdom

**office:** +44 (0) 28 87758944  
**mob:** +44 (0) 7710 058066  
**web:** [www.screenpod.co.uk](http://www.screenpod.co.uk)  
**email:** [sales@screenpod.co.uk](mailto:sales@screenpod.co.uk)



**Authorised Dealer:**



[www.screenpod.co.uk](http://www.screenpod.co.uk)