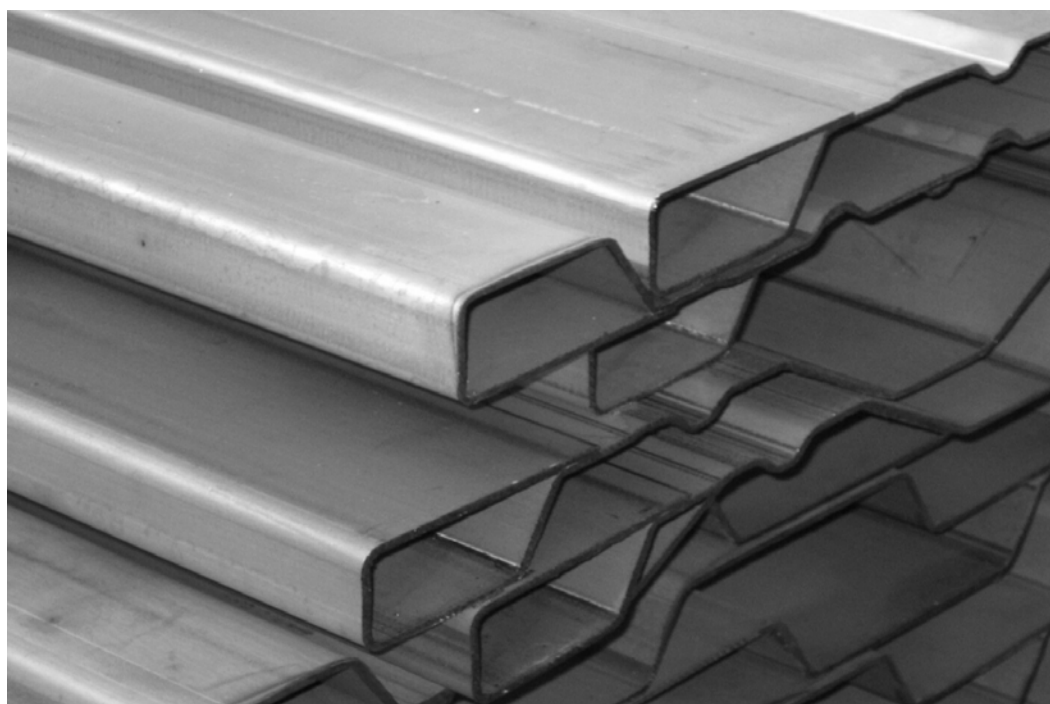
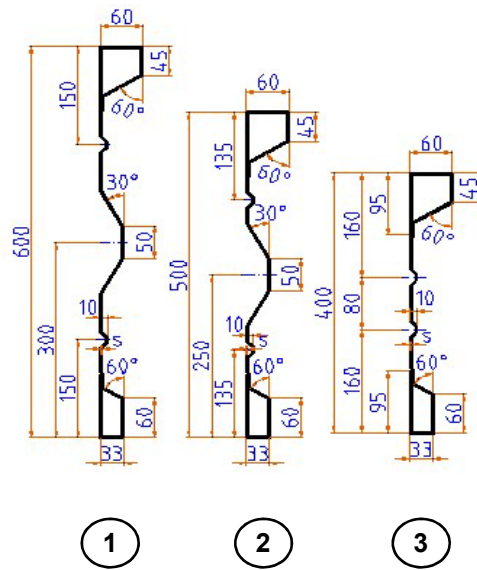




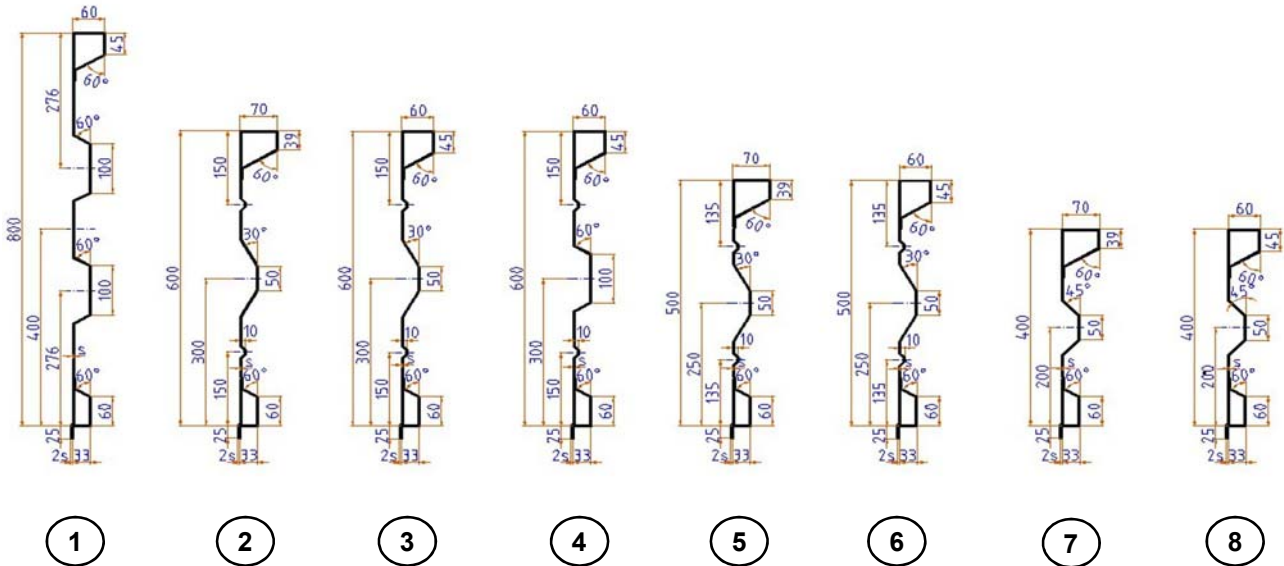
**STEEL SIDE-BOARDS**





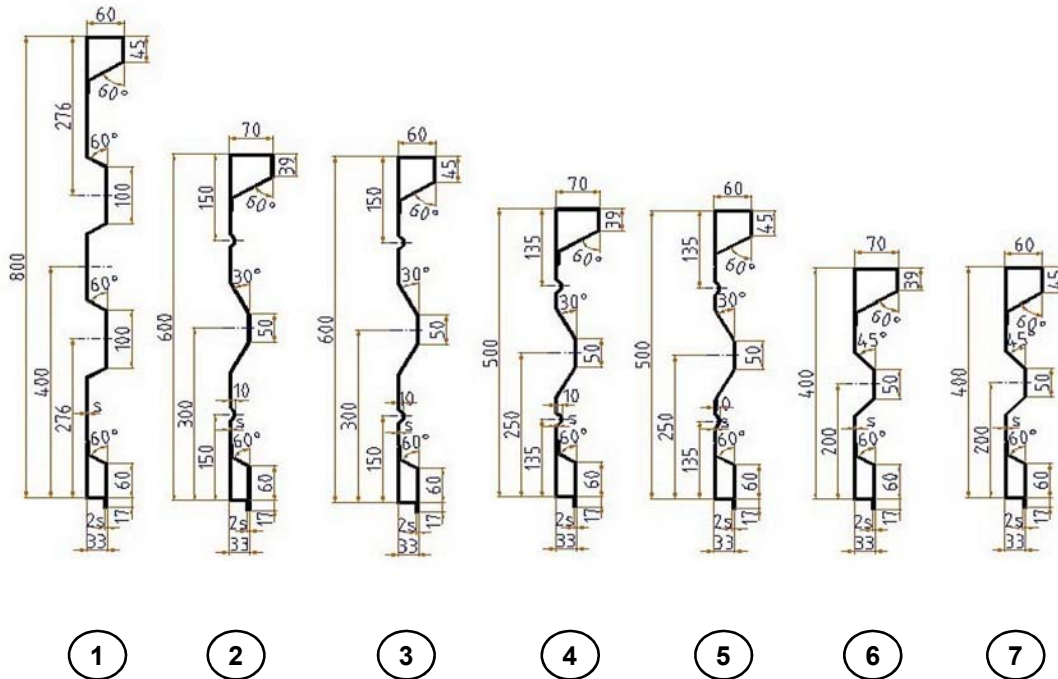


CODE	DESCRIPTION	SURFACE	Kg/m	LENGHT - m	
1	13B60-018	wall thickness 2 mm	raw	14,52	max. 6
	13B60-028	wall thickness 2,5 mm	raw	18,16	max. 6
2	13B50-018	wall thickness 2 mm	raw	12,95	max. 6
	13B50-028	wall thickness 2,5 mm	raw	16,19	max. 6
3	13B40-018	wall thickness 2 mm	raw	11,23	max. 6
<b>MATERIAL QUALITY: S235 - QSTE 500</b>					

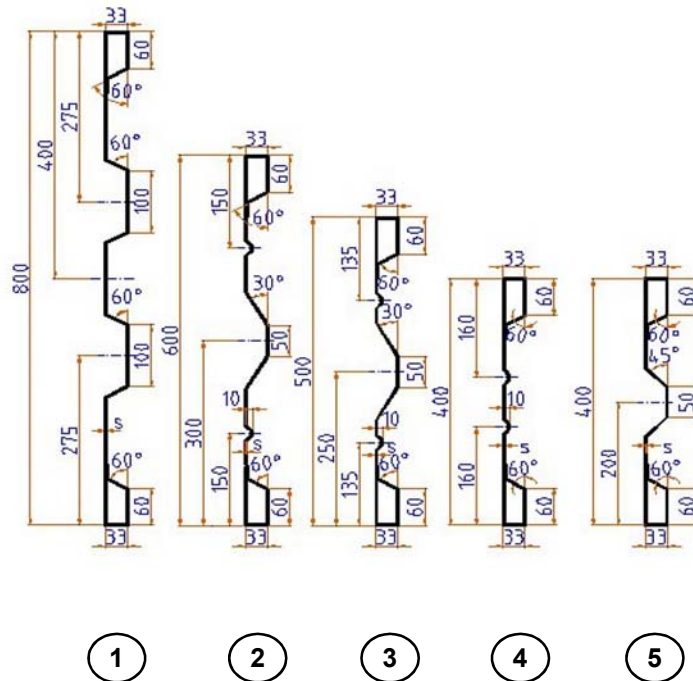


1 2 3 4 5 6 7 8

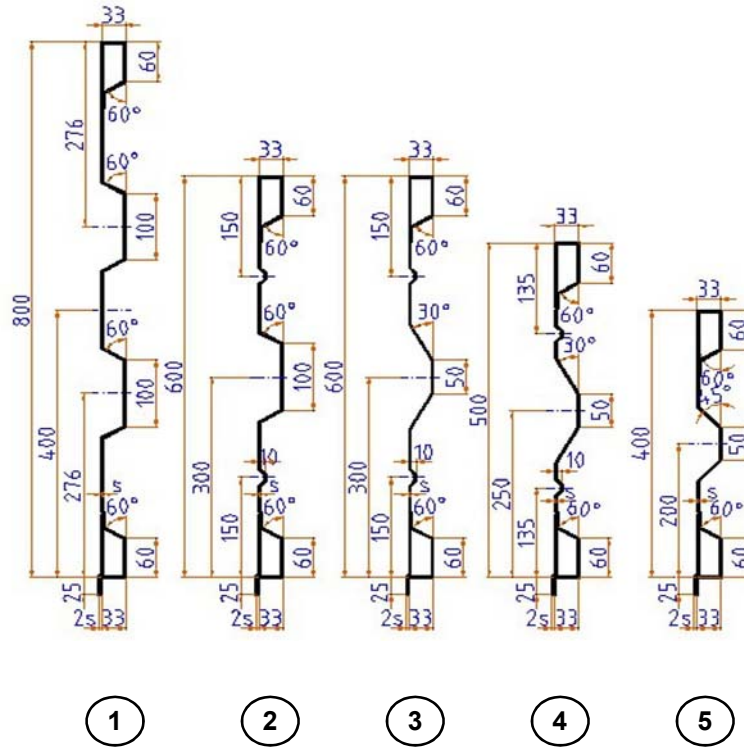
CODE	DESCRIPTION	SURFACE	Kg/m	LENGHT - m
1	<b>13BAKTT8-018</b> wall thickness 2,5 mm	raw	23,6	max. 6
2	<b>13BAKS60-018</b> wall thickness 2 mm	raw	15,39	max. 6
	<b>13BAKS60-028</b> wall thickness 2,5 mm	raw	19,24	max. 6
3	<b>13BAK60-018</b> wall thickness 2 mm	raw	15,39	max. 6
	<b>13BAK60-028</b> wall thickness 2,5 mm	raw	19,24	max. 6
4	<b>13BAKT60-018</b> wall thickness 2,5 mm	raw	19,23	max. 6
5	<b>13BAKS50-018</b> wall thickness 2,5 mm	raw	13,82	max. 6
6	<b>13BAK50-018</b> wall thickness 2 mm	raw	13,82	max. 6
7	<b>13BAKSkT4-18</b> wall thickness 2 mm	raw	12,33	max. 6
8	<b>13BAKkT4-018</b> wall thickness 2 mm	raw	12,33	max. 6
<b>MATERIAL QUALITY: S235 - QSTE 500</b>				



	CODE	DESCRIPTION	SURFACE	Kg/m	LENGHT - m
1	13BNTT80-018	wall thickness 2,5 mm	raw	23,55	max. 6
2	13BNS60-018	wall thickness 2 mm	raw	15,14	max. 6
	13BNS60-028	wall thickness 2,5 mm	raw	18,93	max. 6
3	13BN60-018	wall thickness 2,5 mm	raw	18,93	max. 6
4	13BNS50-018	wall thickness 2 mm	raw	13,56	max. 6
5	13BN500-018	wall thickness 2 mm	raw	13,56	max. 6
6	13BNSkT4-018	wall thickness 2 mm	raw	12,08	max. 6
7	13BNkT40-018	wall thickness 2 mm	raw	12,08	max. 6
<b>MATERIAL QUALITY: S235 - QSTE 500</b>					

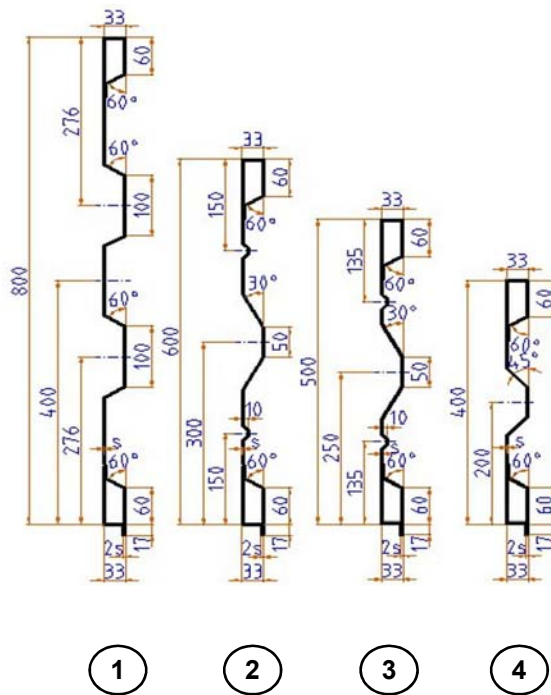


	CODE	DESCRIPTION	SURFACE	Kg/m	LENGHT - m
1	13HVTT80-018	wall thickness 2 mm	raw	17,68	max. 6
2	13HV60-018	wall thickness 1,5 mm	raw	10,48	max. 6
	13HV60-028	wall thickness 2 mm	raw	13,97	max. 6
3	13HV50-018	wall thickness 1,5 mm	raw	9,31	max. 6
	13HV50-028	wall thickness 2 mm	raw	12,4	max. 6
4	13HVKT40-018	wall thickness 2 mm	raw	10,98	max. 6
5	13HV40-018	wall thickness 1,25 mm	raw	6,73	max. 6
	13HV40-028	wall thickness 1,5 mm	raw	8,01	max. 6
	13HV40-038	wall thickness 2 mm	raw	10,68	max. 6
<b>MATERIAL QUALITY: S235 - QSTE 500</b>					



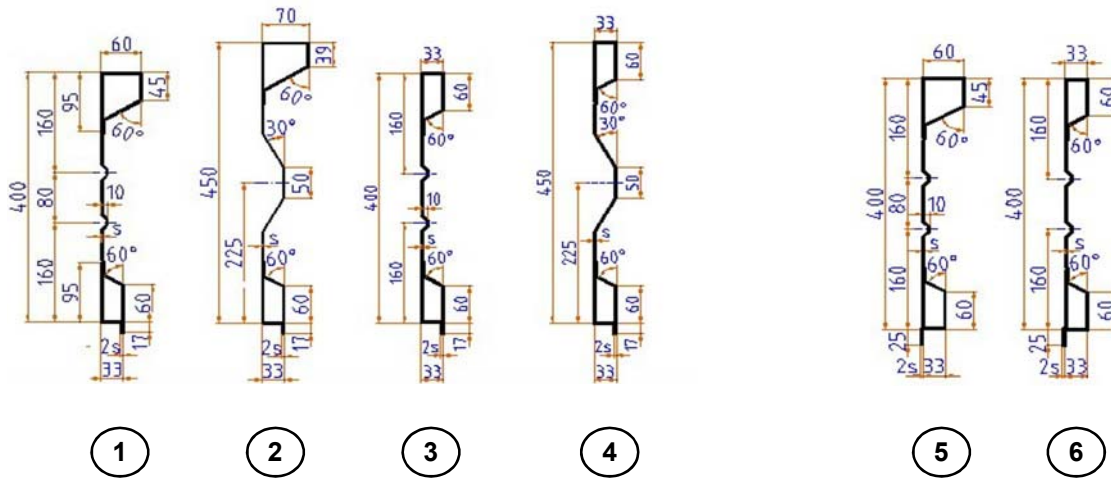
	CODE	DESCRIPTION	SURFACE	Kg/m	LENGHT - m
1	13HVAKTT8-18	wall thickness 2 mm	raw	18,29	max. 6
2	13HVAKT6-018	wall thickness 2 mm	raw	15,07	max. 6
3	13HVAK60-018	wall thickness 2 mm	raw	14,63	max. 6
4	13HVAK50-018	wall thickness 2 mm	raw	12,95	max. 6
5	13HVAKkT4-18	wall thickness 2 mm	raw	11,64	max. 6

**MATERIAL QUALITY: S235 - QSTE 500**

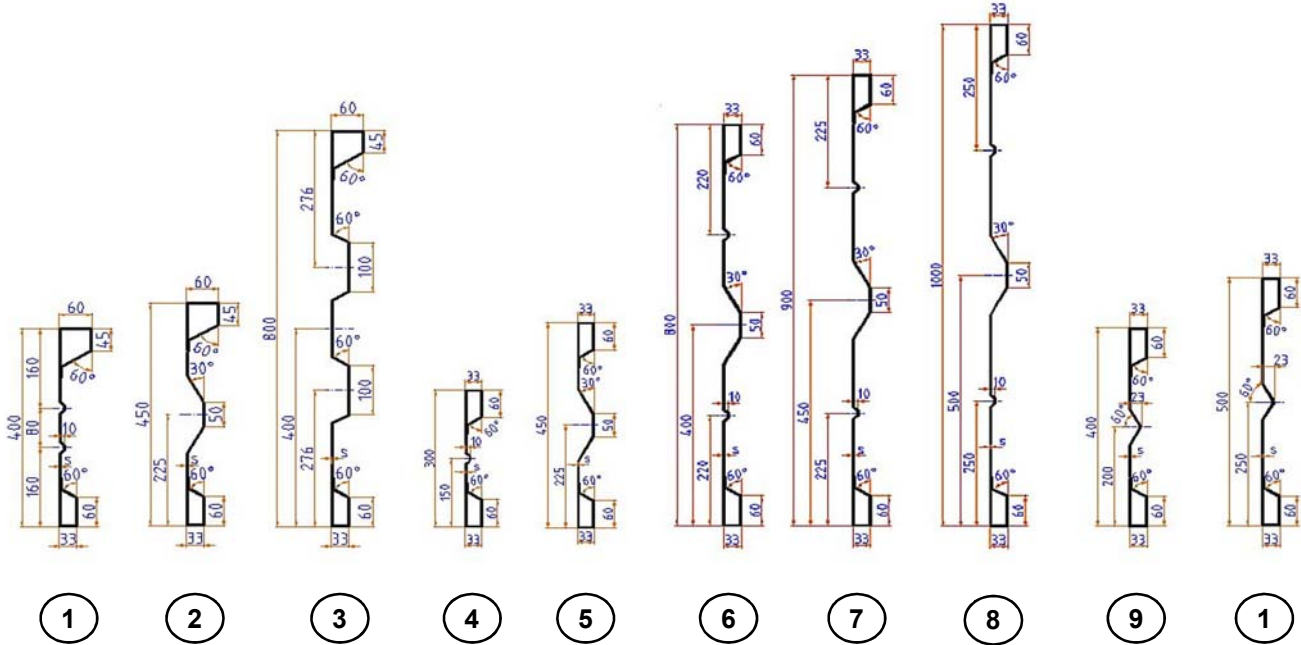


	CODE	DESCRIPTION	SURFACE	Kg/m	LENGHT - m
1	13HVNTT8-018	wall thickness 2 mm	raw	18,14	max. 6
2	13HVN60-018	wall thickness 2 mm	raw	14,52	max. 6
3	13HVN50-018	wall thickness 2 mm	raw	12,95	max. 6
4	13HVNT4-018	wall thickness 2 mm	raw	11,53	max. 6
MATERIAL QUALITY:		S235 - QSTE 500			





	CODE	DESCRIPTION	SURFACE	Kg/m	LENGHT - m
1	<b>13BN40-018</b>	wall thickness 2 mm	raw	11,78	max. 6
2	<b>13BNS45-018</b>	wall thickness 2,5 mm	raw	15,88	max. 6
3	<b>13HVN40-018</b>	wall thickness 2 mm	raw	11,23	max. 6
4	<b>13HVN45-018</b>	wall thickness 2 mm	raw	12,16	max. 6
5	<b>13BAK40-018</b>	wall thickness 2 mm	raw	12,03	max. 6
6	<b>13HVAK40-018</b>	wall thickness 2 mm	raw	11,34	max. 6
<b>MATERIAL QUALITY: S235 - QSTE 500</b>					



① ② ③ ④ ⑤ ⑥ ⑦ ⑧ ⑨ ⑩

	CODE	DESCRIPTION	SURFACE	Kg/m	LENGHT - m
①	13B40-018	wall thickness 1,6 mm	raw	8,96	max. 6
②	13B45-018	wall thickness 2 mm	raw	12,17	max. 6
③	13BTT80-018	wall thickness 2,5 mm	raw	23,16	max. 6
④	13HV30-180	wall thickness 2 mm	raw	9,11	max. 6
⑤	13HV45-018	wall thickness 2 mm	raw	11,16	max. 6
⑥	13HV80-018	wall thickness 2 mm	raw	17,11	max. 6
⑦	13HV90-018	wall thickness 2 mm	raw	18,68	max. 6
⑧	13HV100-018	wall thickness 2 mm	raw	20,25	max. 6
⑨	13HVD40-018	wall thickness 2 mm	raw	10,68	max. 6
⑩	13HVD50-018	wall thickness 2 mm	raw	12,3	max. 6

**MATERIAL QUALITY: S235 - QSTE 500**