


**Printer Settings**

Printer: default 

Connection | Printer | Extruder | Printer Shape | Advanced

Connector: Serial Connection

Port: COM8

Baud Rate: 115200

Transfer Protocol: Autodetect

Reset on Connect: DTR low->high->low

Reset on Emergency: Send emergency command and reconnect

Receive Cache Size: 127

Use Ping-Pong Communication (Send only after ok)

The printer settings always correspond to the selected printer at the top. They are stored with every OK or apply. To create a new printer, just enter a new printer name and press apply. The new printer starts with the last settings selected.


OK Apply Cancel

### Connection

-Port

-Baud Rate 115200

**Printer Settings**

Printer:  

Connection | **Printer** | Extruder | Printer Shape | Advanced

Travel Feed Rate:  [mm/min]

Z-Axis Feed Rate:  [mm/min]

Manual Extrusion Speed:   [mm/s]


Manual Retraction Speed:  [mm/s]

Default Extruder Temperature:  °C

Default Heated Bed Temperature:  °C

Check Extruder & Bed Temperature

Remove temperature requests from Log

Check every 3 seconds. 

Park Position: X:  Y:  Z min:  [mm]

Send ETA to printer display  Go to Park Position after Job/Kill

Disable Extruder after Job/Kill  Disable Heated Bed after Job/Kill

Disable Motors after Job/Kill  Printer has SD card

Add to comp. Printing Time  [%]


Invert Direction in Controls for  X-Axis  Y-Axis  Z-Axis

OK Apply Cancel

**Printer**

- Travel Feed Rate 1800
- Default Extruder Temp 183
- Default Heated Bed Temp 0

**Printer Settings**

Printer: default 

Connection | Printer | **Extruder** | Printer Shape | Advanced

Number of Extruder: 1

Max. Extruder Temperature: 230

Max. Bed Temperature: 120


Max. Volume per second: 12 [mm<sup>3</sup>/s]

Printer has a Mixing Extruder (one nozzle for all colors)

Extruder 1

Name:

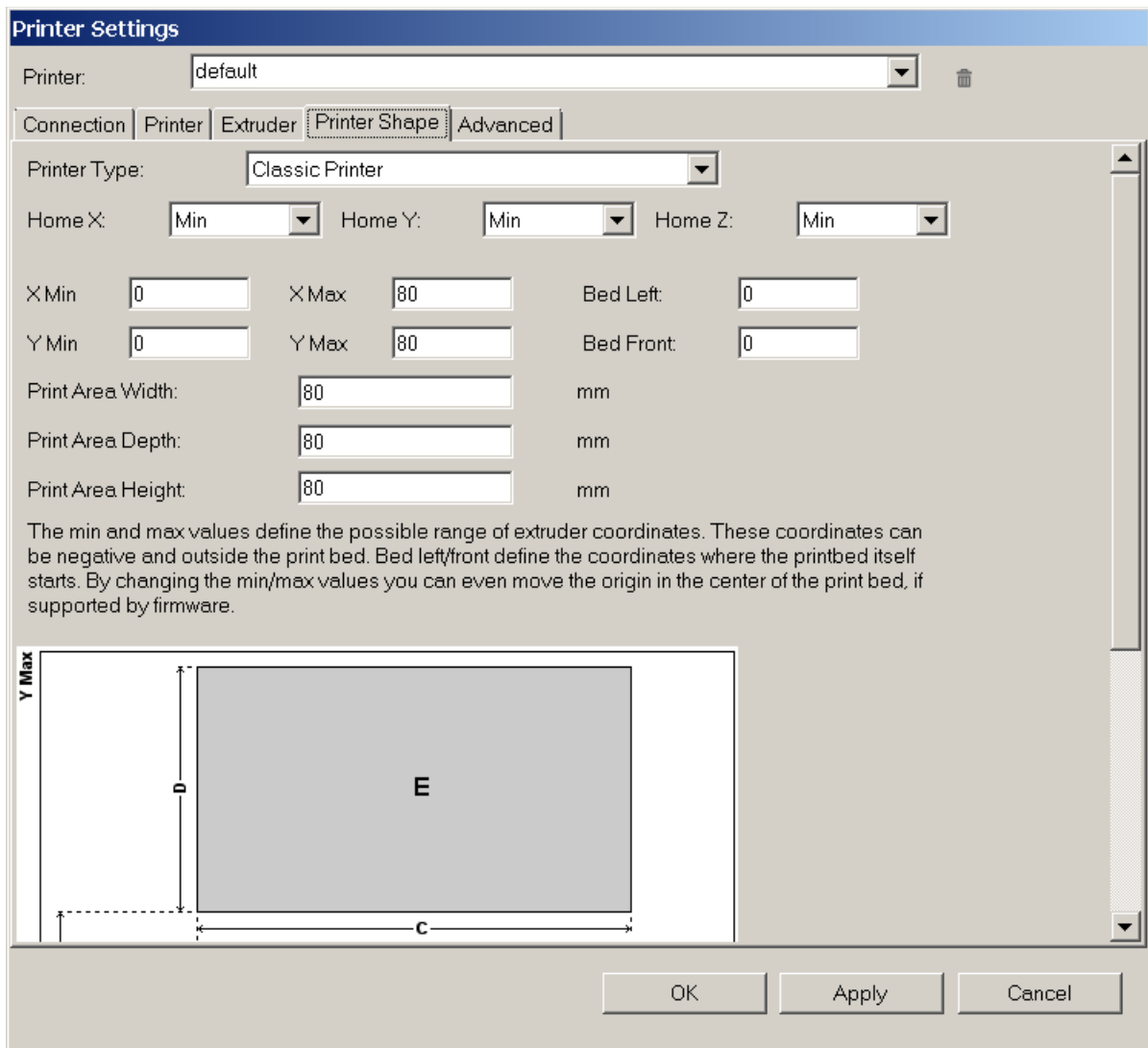
Diameter: 0.4 [mm] Temperature Offset: 0 [°C]

Color: 

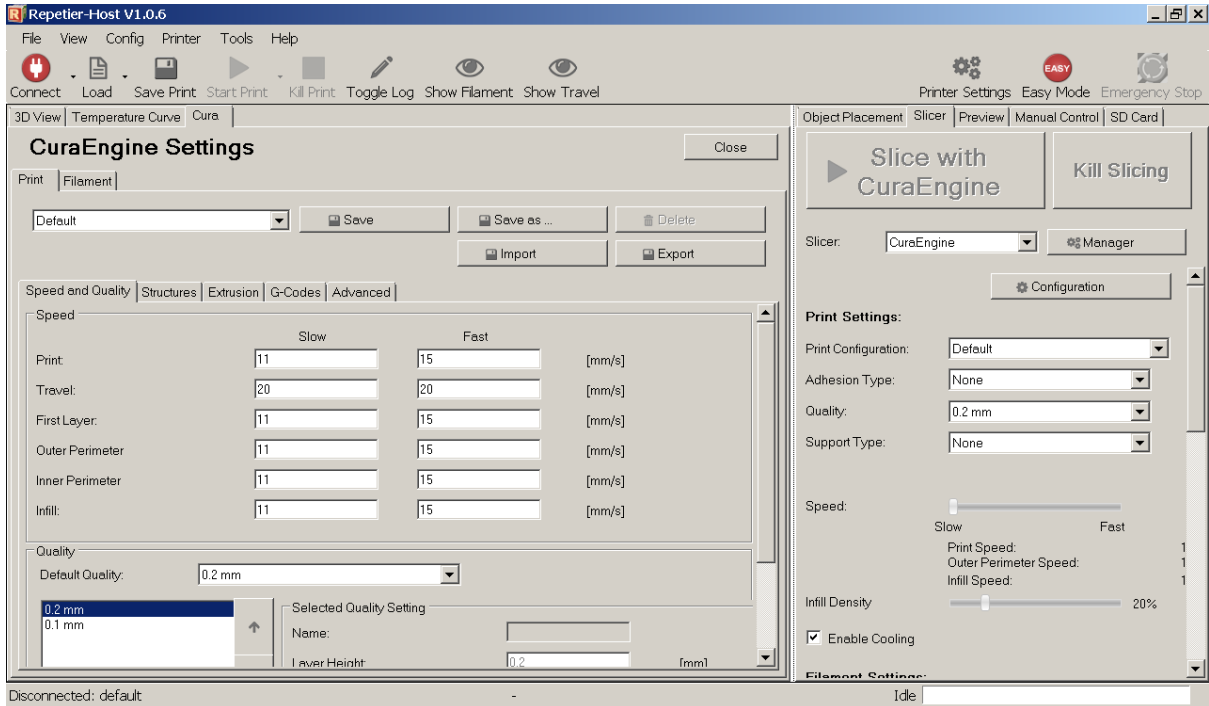
Offset X: 0 Offset Y: 0 [mm]

OK Apply Cancel

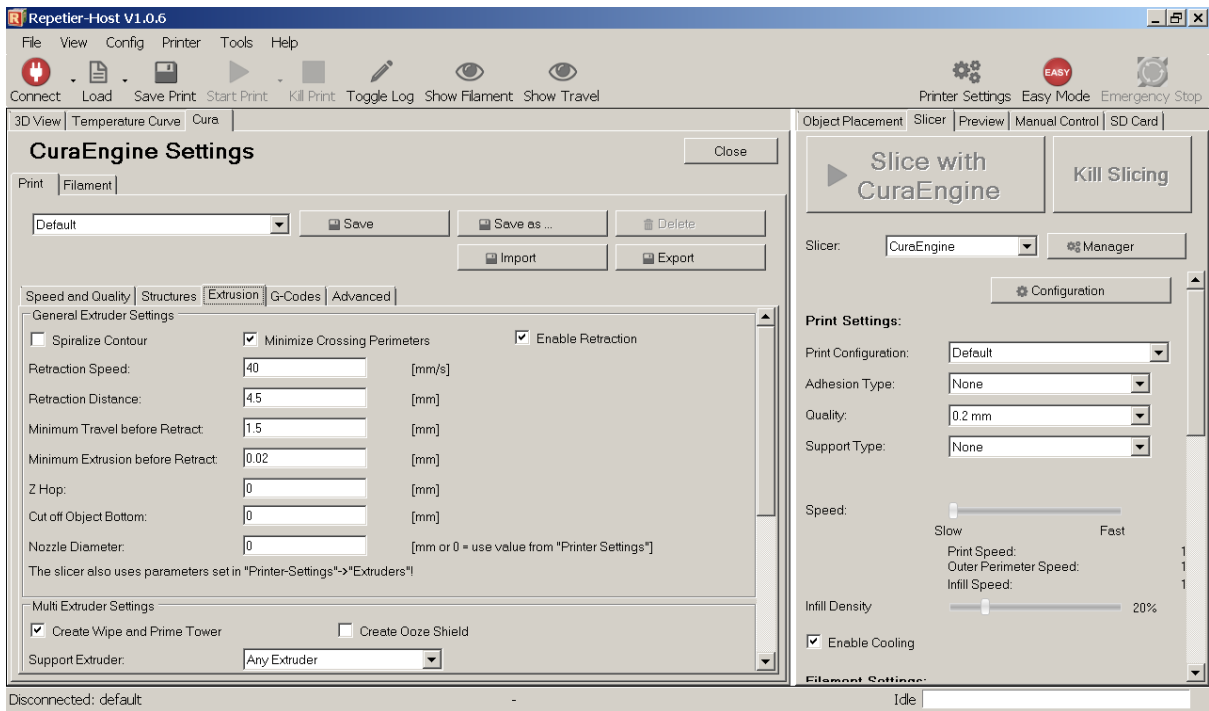
Extruder  
-Max. Extruder Temp 230

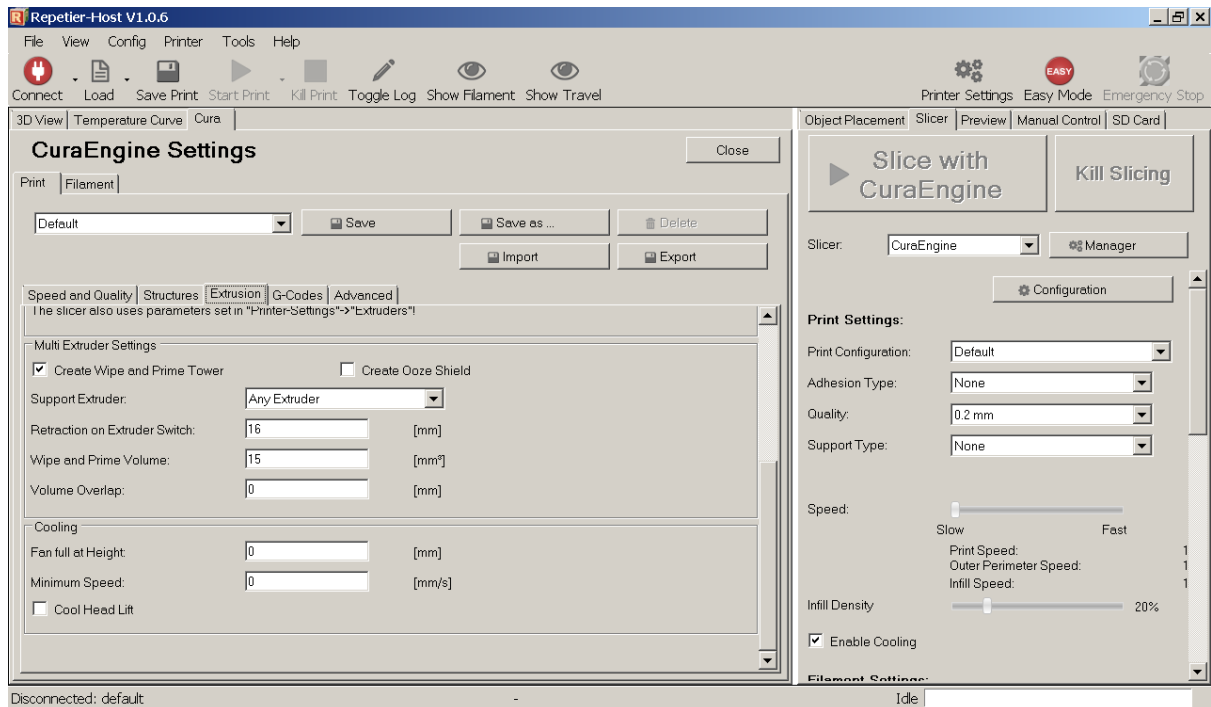


Printer Shape  
-80x80x80mm  
Slicer > CuraEngine



Print > Speed & Quality  
-Change All Speed Config

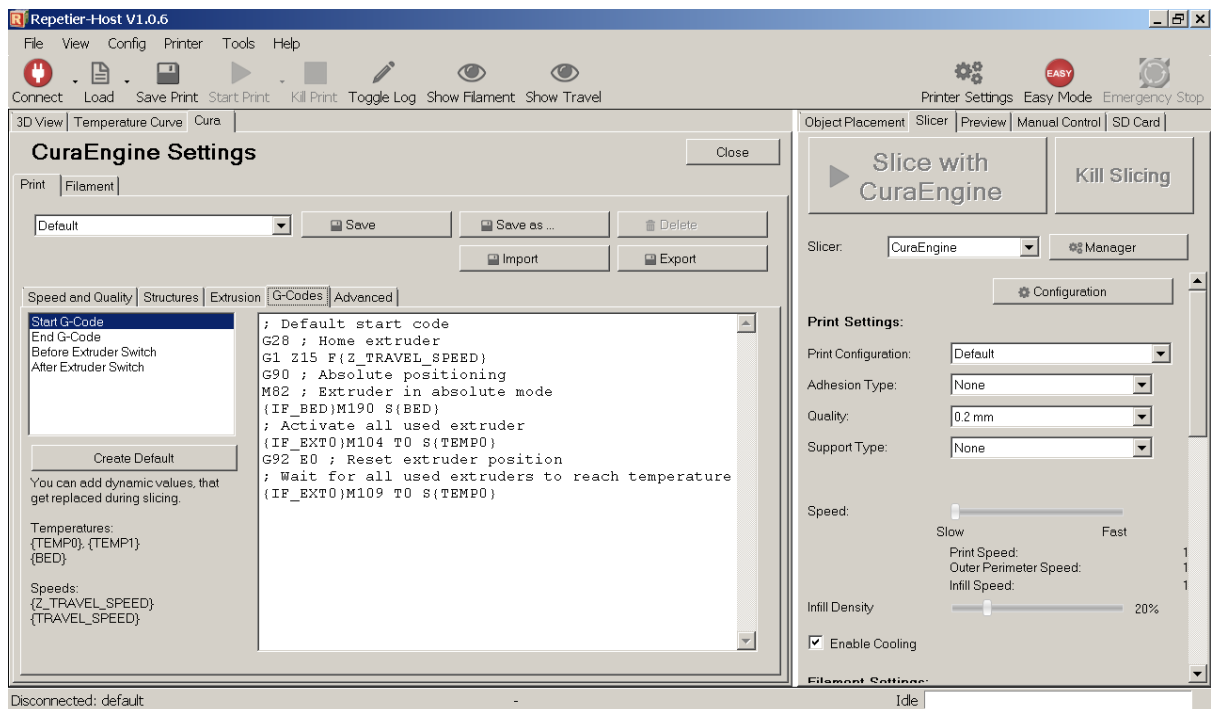




Print > Extrusion

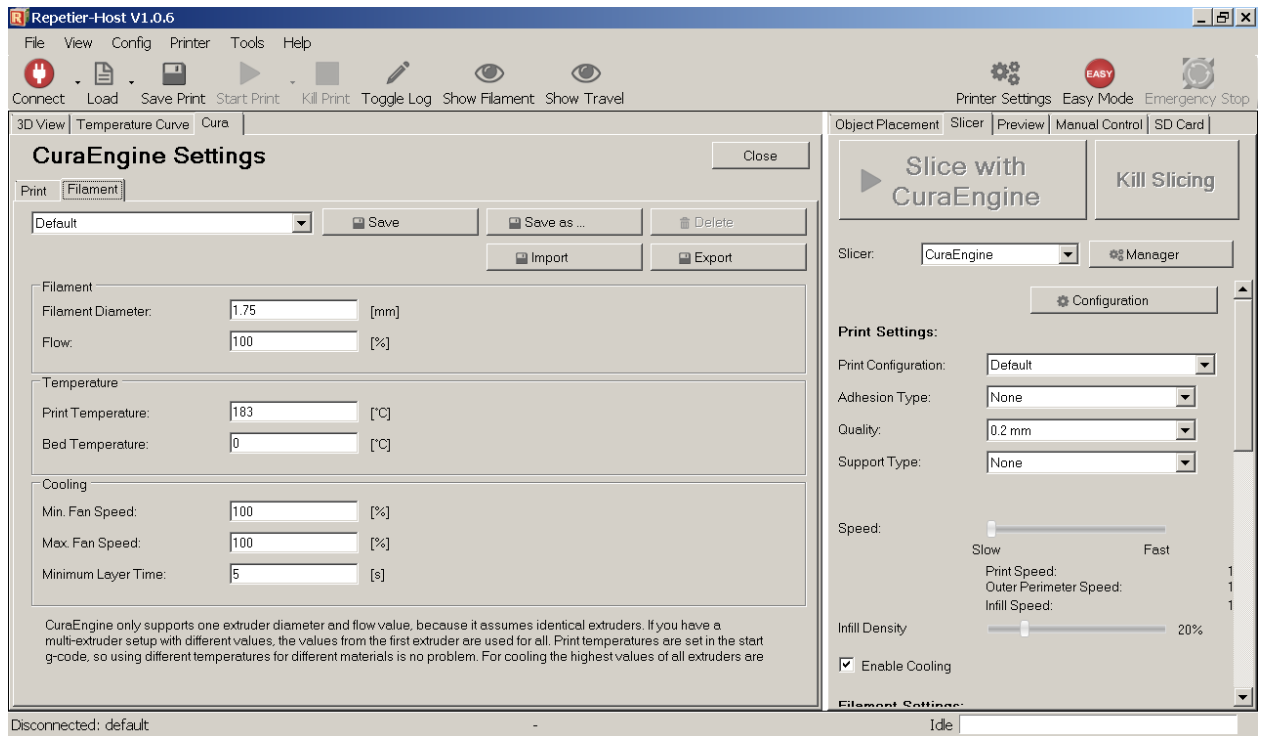
-Retraction Distance 4.5

-Fan full at Height 0



Print > G-Codes

-Delete the line "M107 ; Turn off fan"



## Filament

-Print Temp 183

-Bed Temp 0

-Min. Max. Fan Speed 100%