

BEI SERIES BAGHOUSE



CSL



CAROTHERS AND SON, LTD.
INDUSTRIAL SYSTEMS

BEI SERIES BAGHOUSE

- Economical Hopper Entry Inlet
- Pulse Jet Bag Cleaning
- Top Load and Side Load Bags Available
- Various Fabrication Materials Available:
Carbon Steel, Stainless Steel and Aluminium
- Competitively Priced From 500 CFM to 100,000 CFM
- High Temperature and Process Gas Models Available
- Cost Efficient Integral Fan Mounting Design Available
- Bin Vent Models Available

www.cslsystems.com

CAROTHERS AND SON, LTD.
P.O. Box 2709, Eugene, OR 97402

Phone: (541) 484-4270
Fax: (541) 484-5681



CAROTHERS AND SON, LTD.
INDUSTRIAL SYSTEMS

BEI SERIES BAGHOUSE

BEI FILTER | Bottom Entry Inlet

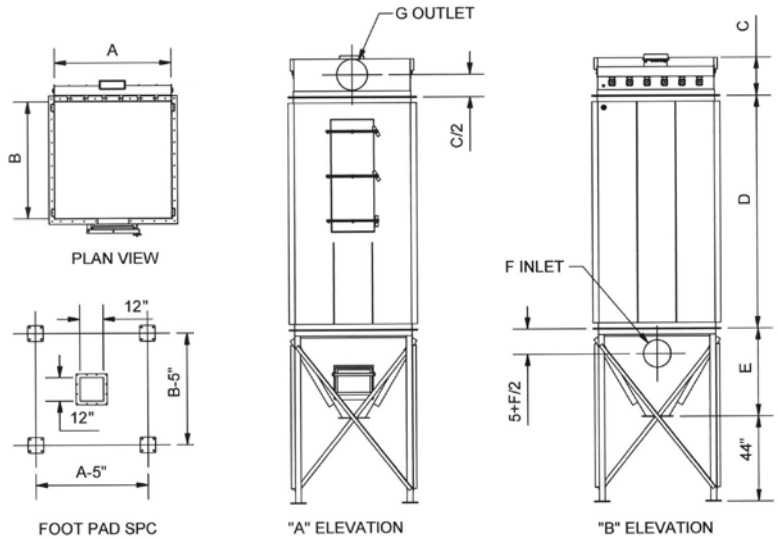
STANDARD FEATURES

- Bottom Removal Bags
- Side Access Doors
- Pulse Jet Filter Cleaning
- Carbon Steel Construction
- 60° Hopper w/Connecting Flange

OPTIONAL FEATURES

- High Temperature Construction
- Insulation
- Alternative construction Materials Available

- Note:
- All Dimensions are in Inches
 - All Dimensions are subject to Change
 - "G" Dimension is round to 18"Ø; above 18"Ø, "G" becomes the width and "H" becomes height.
 - Mating Flanges are available for all connections.



FILTER MODEL	FT ² OF CLOTH			DIMENSIONS									
	96" BAGS	120" BAGS	144" BAGS	A	B	C	D(8')	D(10')	D(12')	E	F	G	H
25 BR (8) (10) (12) BEI	314	393	471	48	48	25	96	120	144	28	12	10	
36 BR (8) (10) (12) BEI	452	565	678	57	57	25	96	120	144	36	14	12	
49 BR (8) (10) (12) BEI	615	769	923	66	66	25	96	120	144	43	18	16	
64 BR (8) (10) (12) BEI	804	1005	1206	75	75	25	96	120	144	51	20	18	
81 BR (8) (10) (12) BEI	1017	1272	1526	84	84	25	96	120	144	59	22	22	18
100 BR (8) (10) (12) BEI	1256	1570	1884	93	93	25	96	120	144	67	24	24	18
121 BR (8) (10) (12) BEI	1520	1900	2280	102	102	25	96	120	144	74	26	26	18
144 BR (8) (10) (12) BEI	1809	2261	2713	111	111	25	96	120	144	82	30	30	18

BEI FILTER | Top Removal

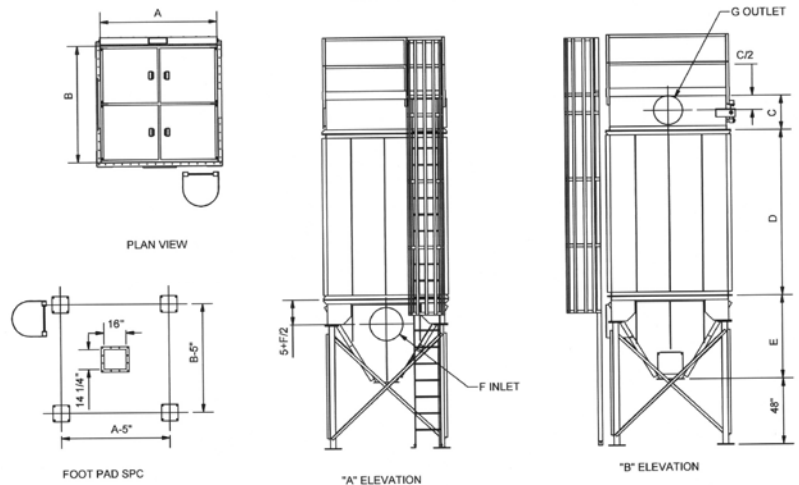
STANDARD FEATURES

- Top Removal Bags
- Top Hinged Access Doors
- Pulse Jet Filter Cleaning
- Carbon Steel Construction
- 60° Hopper w/Connecting Flange

OPTIONAL FEATURES

- High Temperature Construction
- Insulation
- Alternative construction Materials Available

- Note:
- All Dimensions are in Inches
 - All Dimensions are subject to Change
 - "G" Dimension is round to 18"Ø; above 18"Ø, "G" becomes the width and "H" becomes height.
 - Mating Flanges are available for all connections.



FILTER MODEL	FT ² OF CLOTH			DIMENSIONS								
	(8')	(10')	(12')	A	B	C	D(8')	D(10')	D(12')	E	F	G
25 TR (8) (10) (12) M	314	393	471	48	48	25	96	120	144	28	12	
36 TR (8) (10) (12) M	452	565	678	57	57	25	96	120	144	36	14	
49 TR (8) (10) (12) M	615	769	923	66	66	25	96	120	144	43	18	
64 TR (8) (10) (12) M	804	1005	1206	75	75	25	96	120	144	51	20	
81 TR (8) (10) (12) M	1017	1272	1526	84	84	25	96	120	144	59	22	18
100 TR (8) (10) (12) M	1256	1570	1884	93	93	25	96	120	144	67	24	18
121 TR (8) (10) (12) M	1520	1900	2280	102	102	25	96	120	144	74	26	18
144 TR (8) (10) (12) M	1809	2261	2713	111	111	25	96	120	144	82	30	18