

Floor Plans & Capabilities / Cynlluniau Llwr a Galluoedd

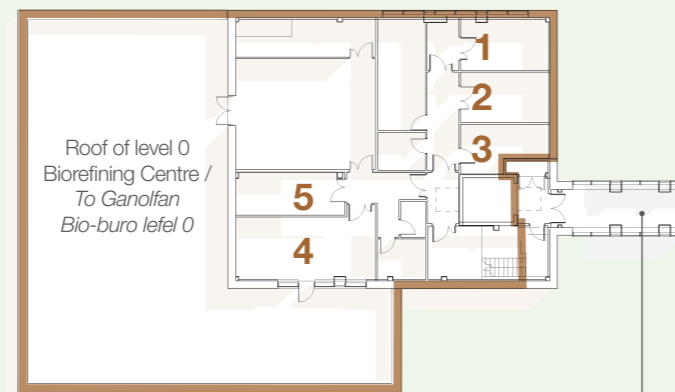
LEVEL / LEFEL 1

Biorefining Centre Canolfan Bio-buro



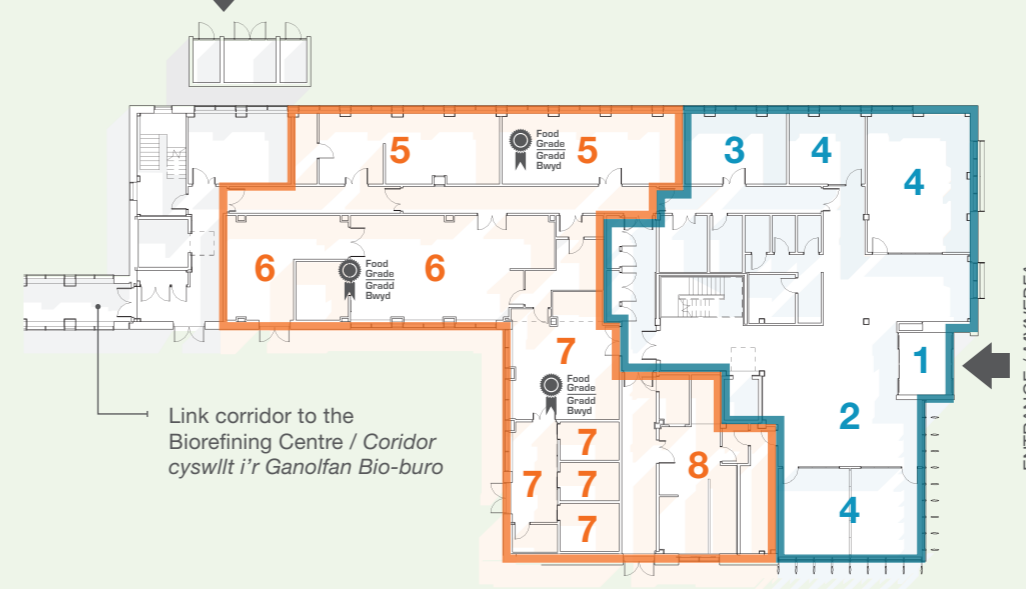
- 1 Clean Room / Ystafell Glân
- 2 Chemical Store / Stofa Gemegol
- 3 Data Processing / Prosesu Data
- 4 Low Carbon / Carbon Isel
- 5 Freeze Dryers / Sychwr Rhewi

LEVEL / LEFEL 1



Link corridor to the Future Food Centre and
Innovation Hub / Coridor cyswllt i'r Ganolfan
Bwydydd y Dyfodol a'r Parth Arloesi

LEVEL / LEFEL 1



LEVEL / LEFEL 1

Innovation Hub Parth Arloesi



- 1 Entrance / Mynedfa
- 2 Reception / Derbynfa
- 3 Tenant Laboratory / Labordy Tenantiaid
- 4 Offices / Meeting Rooms /
Swyddfeydd / Ystafelloedd Cyfarfod

Future Food Centre Bwydydd y Dyfodol



- 5 Food Testing / Profion Bwyd
- 6 Dairy Processing / Prosesu Llaeth
- 7 Meat Processing / Prosesu Cig
- 8 Food Preparation & Sensory Testing
/ Paratoi Bwyd a Phrofi Synhwyrdd

LEVEL / LEFEL 0

Biorefining Centre Canolfan Bio-buro



- 6 Primary Processing / Prosesu Sylfaenol
- 7 Downstream Processing /
Prosesu Eilaidd
- 8 Fermentation / Eplesu

LEVEL / LEFEL 0



LEVEL / LEFEL 2



LEVEL / LEFEL 2

Innovation Hub Canolbwynt y Campws



- 9 Offices / Meeting Rooms /
Swyddfeydd / Ystafelloedd Cyfarfod

Advanced Analysis Centre Canolfan Ddadansoddi Uwch



- 10 Principal Analytical Laboratory
/ Prif Labordy Dadansoddol
- 11 Synthetic Biology and Bioprospecting
/ Bioleg Synthetig a Bio-chwilota
- 12 Microbiology / Microbioleg

Seed Biobank Biofanc Hadau



- 9 Seed Preparation / Paratoi Hadau
- 10 Bulk Seed Store / Stofa Hadau Swmp
- 11 Biobank / Biofanc



Food grade environment conforming to BRC standards.
Amgylchedd gradd bwyd yn cydymffurfio â safonau Consortiwm Manwerthu Prydain (BRC).