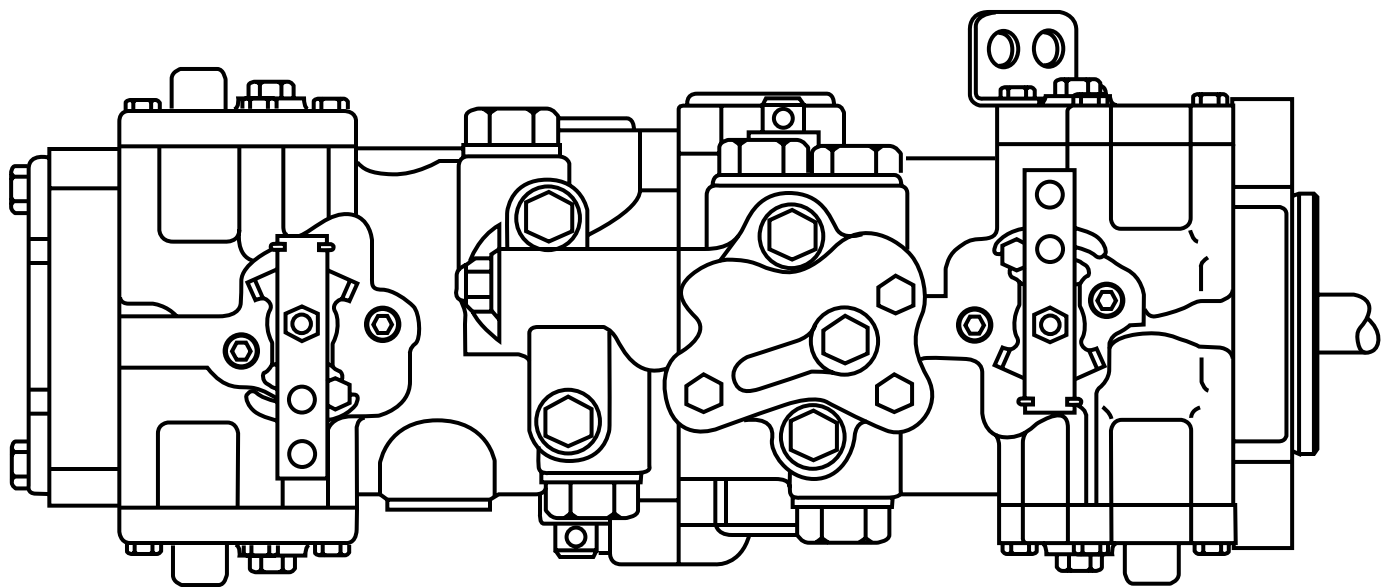


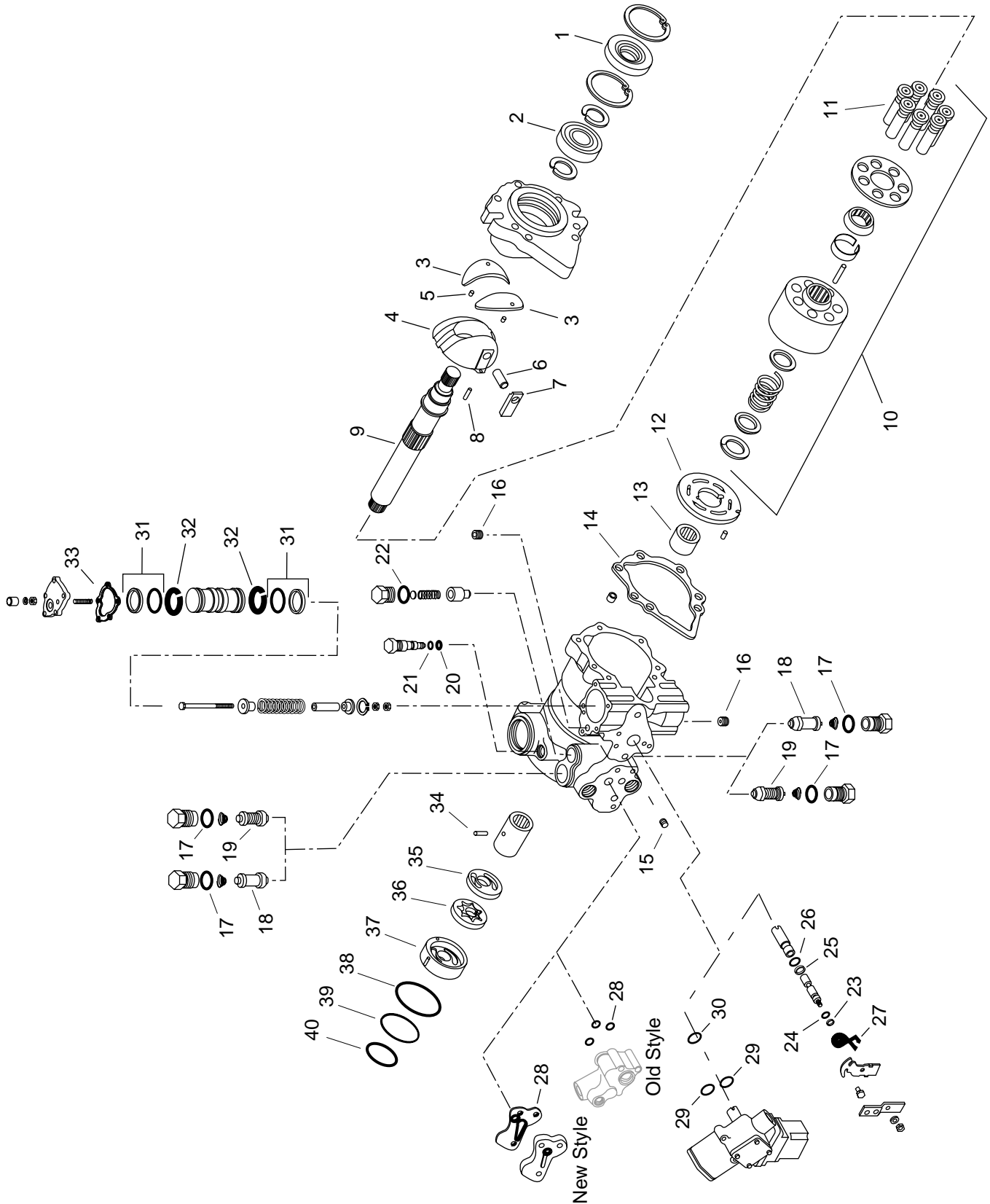


**M46 Medium Duty
Variable Displacement
Tandem Pump
QUICK REFERENCE
Parts List**



Call (515) 239-6366 for the Location of
Your Nearest Genuine Service Parts Source

M46 Tandem Pump



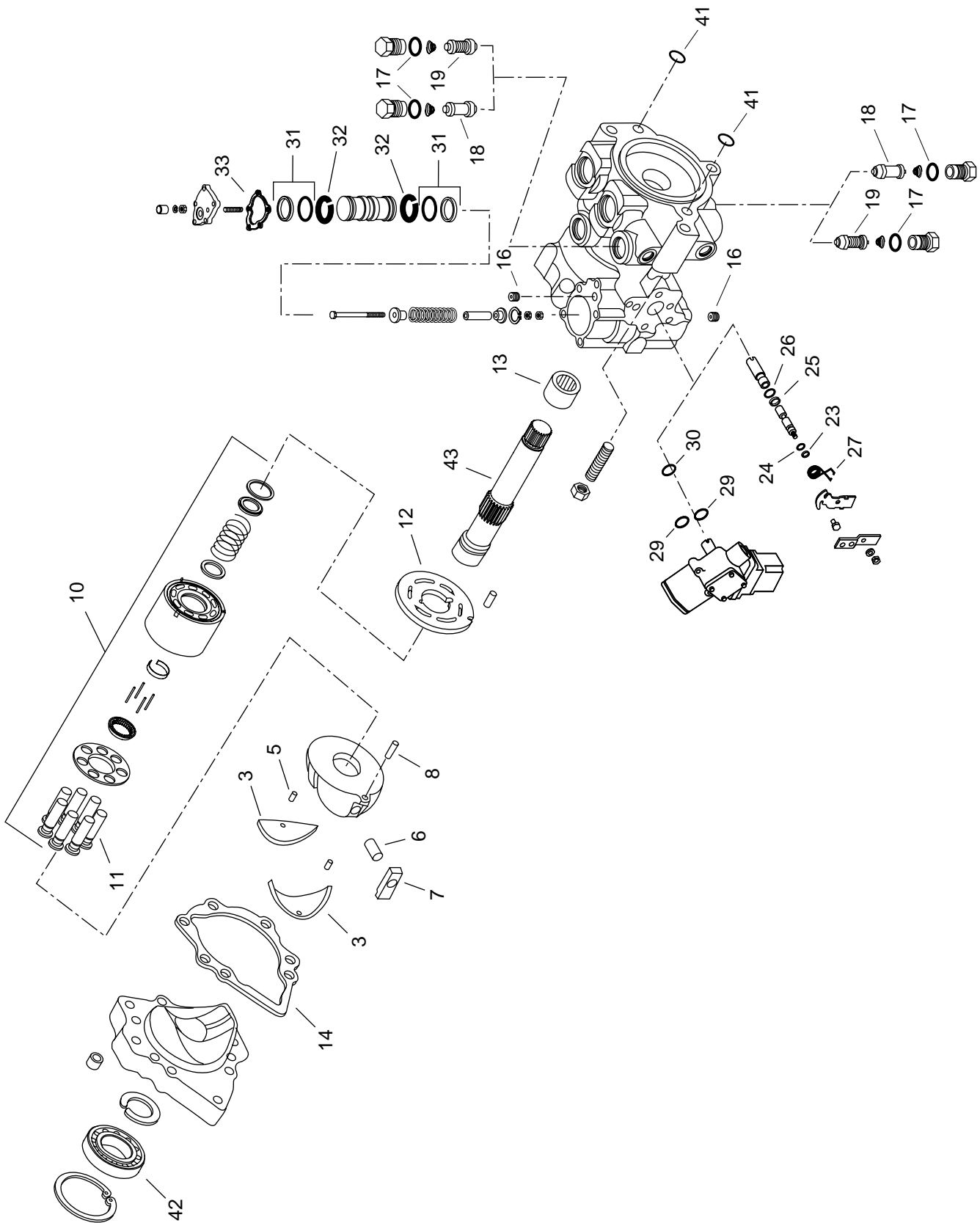
M46 Tandem Pump

QUICK REFERENCE Parts List

Item #	Description	Part Number	Item #	Description	Part Number
	Overhaul Gasket/Seal Kit	4510018			
1	Lip Seal	9008000-0121	15	Control Orifice, MDC, .031"	4800155-0006
2	Ball Bearing - std. - high capacity	9001315-0011 5000077		.036"	4460155-0001
3	Journal Bearing (for non-balanced swashplate) Journal Bearing (for balanced swashplate)	4460325-0001 4460320-0001		.041"	4460155-0004
4	Swashplate (non-balanced) Swashplate (balanced)	4460393 4460394		.046"	4460155-0002
5	Spring Pin	9004700-1206		.054"	4460155-0003
6	Straight Headless Pin	9004820-4416		.156" (considered none)	4460155-0007
7	Sleeve Bearing	4460162		.028"	4460155-0011
8	Pin	9004700-2512	16	Control Orifice, EDC/HDC, .055"	4460333-0003
9	Shaft, 15 tooth 19 tooth 19 tooth, special length 1" dia. tapered 1.3" dia. tapered 1" dia. straight key straight key, 'A' flange/9 tooth	4460151 4460153 4460354 4460154 4460612 4460399 4460484		.037"	4460333-0001
10	Cylinder Block Kit	4460289		.031"	4460333-0005
11	Piston Assembly	4460650		.046"	4460333-0002
12	Valve Plate, CW Valve Plate, CCW Valve Plate, Bi-Directional	4460417 4460418 4460119	17	O-ring	9004201-7500
13	Needle Bearing	9001465-0010	18	Check Valve Poppet	3103348
14	Front Cover Gasket	4460564	19	SCR Valve, 175 bar/2538 psi 190 bar/2755 psi 210 bar/3045 psi 230 bar/3335 psi 250 bar/3625 psi 280 bar/4060 psi 300 bar/4350 psi 345 bar/5000 psi 360 bar/5220 psi 415 bar/6020 psi	3103375-0175 3103375-0190 3103375-0210 3103375-0230 3103375-0250 3103375-0280 3103375-0300 3103375-0345 3103375-0360 3103375-0415
			20	O-ring	9004100-0120
			21	Back Up Ring	9006110-0120
			22	O-ring	9004201-6200
			23	Back Up Ring	9006110-0120
			24	O-ring	9004100-0120
			25	Back Up Ring	9006110-0160
			26	O-ring	9004100-0160

Warning: These part numbers are for units built after 90-44

M46 Tandem Pump



M46 Tandem Pump

QUICK REFERENCE Parts List

Item #	Description	Part Number
27	Neutral return spring	4800078
28	O-ring (refer to SB-9017) (old style adaptors)	9004101-0170
	Suction Filter Adaptor Seal (units built after 91-30)	4460655
	Remote Filter Adapter Seal (units built after 91-36)	4460656
29	O-ring	9004101-0140
30	O-ring	9004100-0210
31	Servo Piston Ring Kit	4510002
32	Bearing Ring	4460648
33	Servo Gasket	4460413
34	Pin Special	9004875-0081
35	Gerotor Spacer Plate	4460260
36	Gerotor Assembly, .95 cu. in.	4800077-0001
	1.40 cu. in./rev.	4800077-0002
37	Gerotor Cover	4800108-0001
38	Special O-ring	9004375-0022
39	O-ring	9004101-2380
40	O-ring	9004101-2240
41	O-ring	9004101-1160
42	Ball Bearing	9001315-0011
43	Shaft, 9 tooth aux. drive	4460152
	13 tooth aux. drive	4460150
	no auxiliary drive	4460155
	11 tooth aux drive	4460441

Warning: These part numbers are for units built after 90-44