

LightStation®

With an easy to locate photoluminescent label on the front cover, LightStations provide comfort and assurance that a safe light will be available when the power goes out.



LightStation® Models 4 and 10

Designed with a fire resistant case. When the front cover is pulled open, all SnapLights (25 cm) activate to provide instant illumination, flooding an area with portable light for evacuees. Available in red or beige and also with a safety lock (Model L).

LightStation® Model 20

Designed with a heavy-duty molded plastic case. When the front cover is pulled open, one SnapLight (25 cm) activates, leaving 19 SnapLights for individuals to carry and use as light sources while evacuating. Available in red.

LIGHTSTATION**	PART#	CASE	10" REFILL	PART#	CASE
Model 4	9-00346	6	Yellow 4 HR	9-00352PF	200
Model 4 L	9-00362	6	Yellow 4 HR	9-00351PF	40
Model 10	9-00343	4	Red* 4 HR	9-00367PF	200
Model 10 L	9-00353	4	Red* 4 HR	9-00370PF	40
Model 20	9-00364	4	Tamper Pin	9-00354	25

* Available with MoQ. **SnapLights not included.

Photolum Plate

Easy to install thanks to adhesive tape on the rear or via the nail/screw holes. 2 SnapLights (15 cm) are always handy and easy to locate.

PHOTOLUM PLATE	PART#	CASE
With 2x6" SnapLight Yellow 30 MIN	LTD9-CABINPACKA	20
With 2x6" SnapLight Green 12 HR	LTD9-CABINPACKB	20

S.E.E.® System

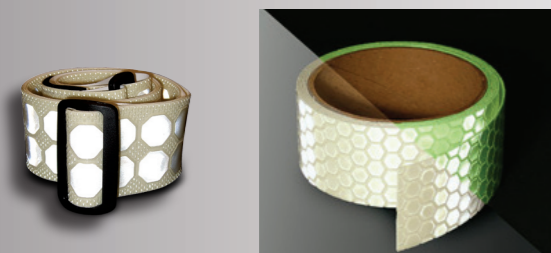
Install the S.E.E.® System with photoluminescent label along a designated evacuation route to provide a safe, clearly-lighted path throughout a building. When the front cover is pulled open, two 6" ChemLight lightsticks activate, providing instant light to prevent slips, trips, and falls. Includes 2-hour yellow high-intensity ChemLights (15 cm).

S.E.E. SYSTEM	PART#	CASE
S.E.E. w/(20) ChemLights***	9-08500PF	10
Refill 6" Yellow 2 HR****	SA8-08505PF	100
Tamper Proof Pins	4-2101	100

***Includes Mounting Hardware & 2 pins/PK. Sold as 10 pack system. Not packaged for individual sale.
****Includes (50) Expiration Date Labels & (50) Tamper Pins.

CYFLECT™ Reflects White, Glows Bright

Cyfect is a range of retroreflective and photoluminescent material for safe evacuation and personal protection.



CYFLECT™

Reflective and self-luminous tapes, ideal for use on signs, displays, buildings, steps, stairs, and doorways. Available as sew-on or adhesive in a variety of sizes. Custom colors, patterns, designs and insignia are available upon request.

CYFLECT™ PT Belts

Cyfect personal marker Belts are adjustable, retro-reflective but also photoluminescent. Glow can be recharged by a headlight or any other light source.

PT BELTS	PART#	CASE
WHITE 2" x 5,5' - 5cm x 1,7m	9-3012507	Each



EMERGENCY PREPAREDNESS

CONTINGENCY LIGHTING

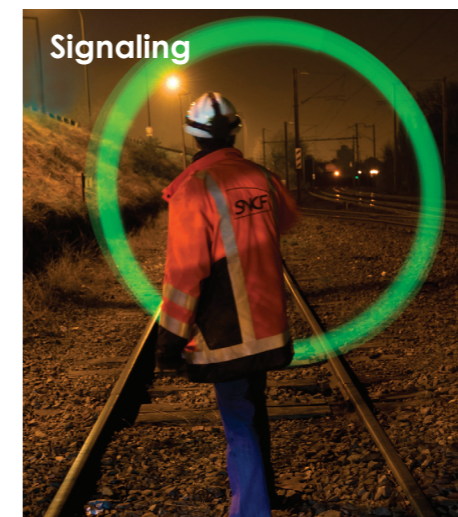
EVACUATION ILLUMINATION

RESCUE SIGNALING

MAINTENANCE OPERATION



Marking



Signaling



Illuminating

MADE IN:



6" SnapLight® LightSticks (15 cm)

With a simple bend, snap, and shake, SnapLight® (15cm) Industrial grade, phthalate-free chemical lightsticks provide instant light for all emergency situations. Each SnapLight® creates 360° of illumination, and is visible up to 1 mile. They are non-toxic, non-flammable, waterproof, and generate no heat or sparks.

Contact us for a foil customization to light up your brand.



12 HOUR	PART#	CASE
GREEN	SA8-08076BI	500
	SA8-108076BI	100
YELLOW	SA8-08082BI	500
	SA8-108082BI	100
ORANGE	SA8-08084BI	500
	SA8-108084BI	100
RED	SA8-08078BI	500
	SA8-108078BI	100
8 HOUR	PART#	CASE
BLUE	SA8-08080BI	500
	SA8-108080BI	100
WHITE	SA8-08098BI	500
	SA8-108098BI	100

30 MINUTE	PART#	CASE
YELLOW-HI	SA8-08086BI	500
	SA8-108086BI	100
RED-HI	SA8-08088BI	500
	SA8-108088BI	100
WHITE-HI	SA8-08094BI	500
	SA8-108094BI	100
5 MINUTE ULTRA	PART#	CASE
ORANGE-HI	SA8-27022BI	500
	SA8-127022BI	100

CDU Empty	PART#	CASE
Standard	SA2-00048	Unit with MoQ
Customized	SA2-00050	Unit with MoQ



LumiSafe Ltd
10 Linnet Close
Patchway, Bristol. BS34 5RL
<http://www.lumisafe.co.uk>
lumisafe@btconnect.com



4" CHEMLIGHT® LightSticks (10 cm)

Lightweight and handy, 4" ChemLights are recommended for marking routes, clearing areas, vehicle lane night patrol and survival kits.

4" CHEMLIGHT®	PART#	CASE
6 HR GREEN	9-74780PF	100
6 HR ORANGE	9-76300PF	100

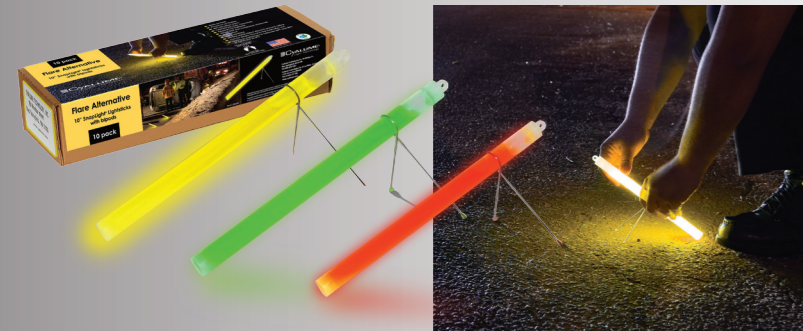


8" Ultra High-Intensity Flare Alternative® (20 cm)

Developed as a safe, environmentally-friendly alternative to traditional incendiary flares currently used by law enforcement. With reflective strip, it enhances visibility up to 1 mile during emergencies. The attached wire stand allows easy set-up and activation. Ideally used at accident scenes, vehicle breakdowns, as hazard markers, and to alert drivers of obstacles.

30 MINUTE	PART#	CASE
ORANGE ULTRA-HI	9-27035	4 x 12-PK
ORANGE ULTRA-HI individually foiled	9-27037	100
CDU with 24 sticks foiled	9-00401	4
CDU Empty, for 24 sticks	2-6000	1

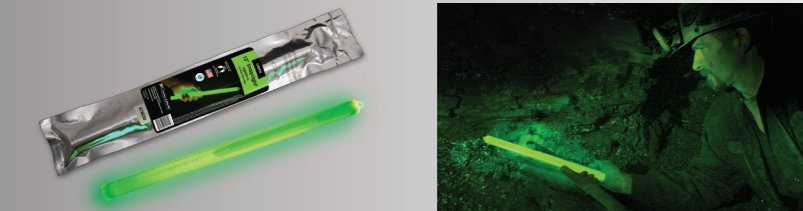
Counter Display Unit (CDU) for 24 sticks



10" Flare Alternative® (25 cm)

With no batteries required, the 10" SnapLight® offers 360° of illumination. It fits securely in a metal tripod stand to prevent rolling and is visible up to 1 mile. SnapLights are maintenance free, non-toxic, non-flammable, and waterproof.

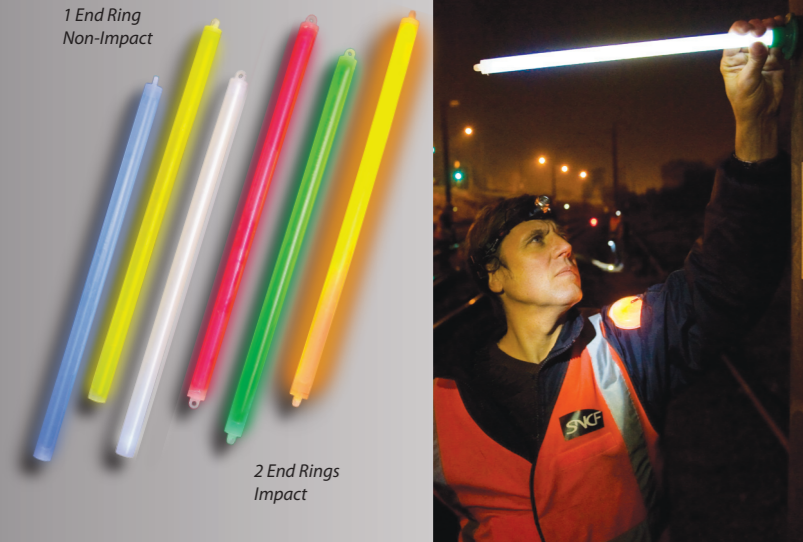
10" SNAPLIGHT®	PART#	CASE
2 HR GREEN	9-27049PF	4 x 10-PK
2 HR YELLOW	9-27030PF	4 x 10-PK
2 HR RED	9-27047PF	4 x 10-PK



12" SnapLight® LightStick (30 cm)

Widely used by Law Enforcement, mining and utility companies the 12" SnapLight provides 3x the light of a 6" lightstick. Individually wrapped in foil. Stick with a hole punched at the top for easy hanging.

12" SNAPLIGHT®	PART#	CASE
12 HR GREEN	9-2705101PF	25



15" LightSticks (40 cm)

Also available in a non IMPACT® version, the 15" lightstick is the only one that activates on impact, providing instant illumination. When near gas or oil, or any combustible materials, the 15" IMPACT stick is a dependable source of emergency lighting that is safe for use in all environments. Recommended for confined space lighting, vehicle repairs, building searches, bundle drops...

15" IMPACT® (2 End Rings)	PART#	CASE
12 HR GREEN	9-87090PF	4 x 5-PK
12 HR YELLOW	9-87110PF	4 x 5-PK
12 HR RED	9-87120PF	4 x 5-PK
8 HR BLUE	9-87100PF	4 x 5-PK
8 HR WHITE	9-87130PF	4 x 5-PK
5 MIN ORANGE-HI	9-87150PF	4 x 5-PK
15" Non-IMPACT (1 End Ring)	PART#	CASE
12 HR GREEN	9-03620PF	4 x 5-PK
12 HR YELLOW	9-06130PF	4 x 5-PK
12 HR RED	9-06120PF	4 x 5-PK
8 HR BLUE	9-06140PF	4 x 5-PK
8 HR WHITE	9-03670PF	4 x 5-PK

1 End Ring Non-Impact

2 End Rings Impact

S.O.S.®

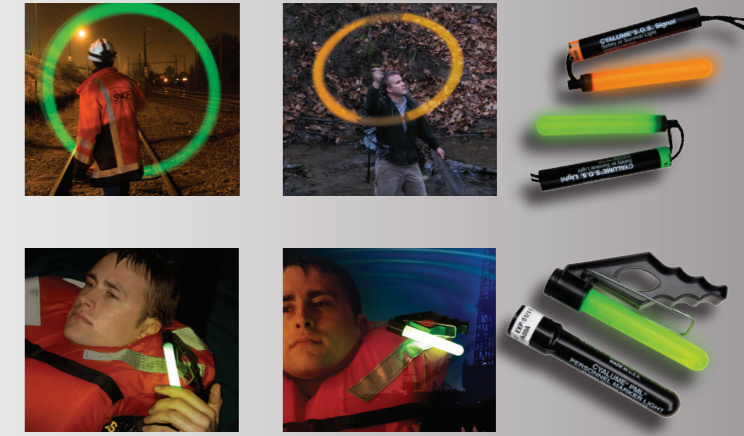
When the user spins the signaling device, it forms a distinctive circle pattern visible up to 3 miles from the air and 1 mile on land. Ideal for rescue operations.

S.O.S.®	PART#	CASE
8 HR GREEN	9-42740PF	50
5 MIN ORANGE ULTRA-HI	9-68260PF	50

Personnel Marker Light (PML®)

Coast Guard approved, the PML® is the superior clip-on identifying signal for rescue-at-sea or evacuation operations. Designed to be lightweight, waterproof, and buoyant, the PML is the ideal emergency locator.

PML®	PART#	CASE
8 HR GREEN	9-80770PF	50



Markers

VisiPad™

Self-adhesive, rectangular and flat, the CyPad™ weighs less than a traditional 6" SnapLight®, but with the same overall surface area. The Hook and Hole feature allows VisiPad™ to be hung.



VisiPad™	PART#	CASE
10 HR GREEN	9-27601PF	25
10 HR YELLOW	9-27631PF	25
10 HR ORANGE	9-27651PF	25
10 HR RED	9-27611PF	25
10 HR BLUE	9-27641PF	25

All LightSticks Accessories

Directional Handle

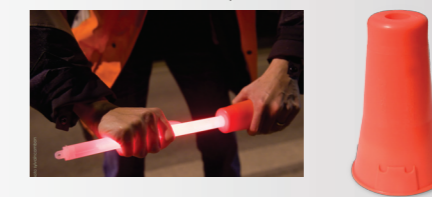
Lightweight and durable, the handle is ideal for police officers, road construction crews who require a highly visible light for signaling or directing traffic.



ACCESSORIES	PART#	CASE
DIRECTIONAL HANDLE	9-33450	25

Cone Adapter

Cone Adapters can be used on their own or placed on top of a safety cone for improved visibility. They are stackable and easily stored.



ACCESSORIES	PART#	CASE
CONE ADAPTER	9-27103	25

Magnetic Base

Safety Grade
It allows the lightstick to be held in an upright position for maximum visibility. You can attach it to any steel surface.



MAGNETIC BASE	PART#	CASE
SAFETY GRADE	SA9-33460	12
Anti-scratch Protection	SA4-60011	25
MILITARY GRADE	9-33460	25
Anti-scratch Protection	SA4-60010	25

Military Grade

With strong hold. Anti-scratch for sensitive surface available.



Mark your Way to Safety

LightShape® Circle Markers

The self-adhesive 3" LightShape Markers (8cm) can be used for medical triage, evacuation procedures, trail marking or as a protective safety equipment. Peel the paper backing and adhere to any surface.

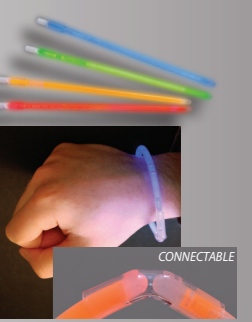
LIGHTSHAPE®	PART#	CASE
4 HR GREEN	9-50860PF	10 x 10-PK
4 HR YELLOW	9-42710PF	10 x 10-PK
4 HR ORANGE	9-42730PF	10 x 10-PK
4 HR RED	9-42720PF	10 x 10-PK
4 HR BLUE	9-42700PF	10 x 10-PK
8 HR BLUE*	9-50875PF	10 x 10-PK
8 HR WHITE*	9-50865PF	10 x 10-PK
8 HR WHITE* GREEN CROSS	9-50866PF	10 x 10-PK
8 HR PURPLE*	9-50870PF	10 x 10-PK

*Available with MOQ of 5000 pcs.

FlexBands

The 7/8" FlexBand is the ideal emergency marker. FlexBands can be placed on wrist, stretchers, door knobs... Combine FlexBands together to mark larger areas.

FLEXBANDS	PART#	CASE
6 HR GREEN	9-85990PF	12 x 3-PK
6 HR ORANGE	9-85970PF	12 x 3-PK
6 HR Lt RED	9-85960PF	12 x 3-PK
6 HR BLUE	9-85980PF	12 x 3-PK



Increase Your Performance...