

# All About Earth Day

Monday April 22nd is Earth Day. Let's celebrate and care for our planet! Read on for ideas for how to use different assistive tech for activities all about Earth Day

## Free Downloadable Activities

**FREE ChooseIt! Maker 3 activities (no subscription required)**


Simply download the free iPad app (or go to your account if you have a subscription), redeem the sharecodes below, then get started!



**Ready To Use For All**

Reduce, reuse, or recycle? Categorize different items based on whether you should reduce them, reuse them, or recycle them.

**Sharecode: XRGBBL**



**Download and Personalize (subscription required to edit)**

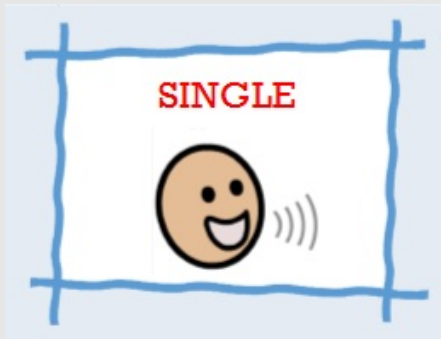
Activism means so much more when students do something they care about! Create your own choiceboard with ways that students can be an environmental activist around the school. Students choose the one they want to do, then do that thing together!

**Sharecode: FRKQRM**

[Click here to download the free iPad app](#)

[Click here to subscribe or start a free 2 week trial](#)

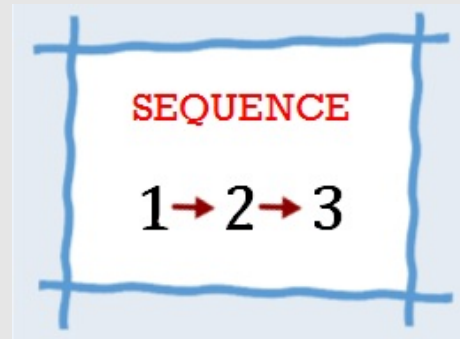
Ideas for using the [SmoothTalker](#)  
(or other switch communicators)  
in activities about Earth Day



**Tell This Year's Earth Day Theme**

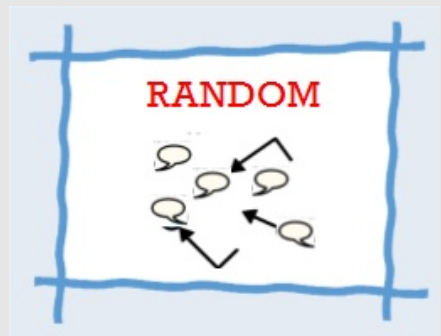
Did you know that this year's Earth Day theme is "protect our species"? Use the SmoothTalker to let people know!

"Today is Earth Day - Protect our species!"



**Steps of Water Cycle**

Program in the steps of the water cycle. Each time the student presses the switch, it says and/or describes the next step. Students can continue to go through the cycle over and over. Use with an image/diagram for additional context.



**Reduce, Reuse, Recycle**

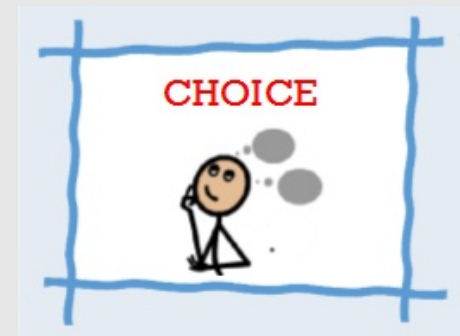
Press the switch to hear different ways to help the Earth!

Ex:

"Reduce water usage"

"Reuse grocery store bags"

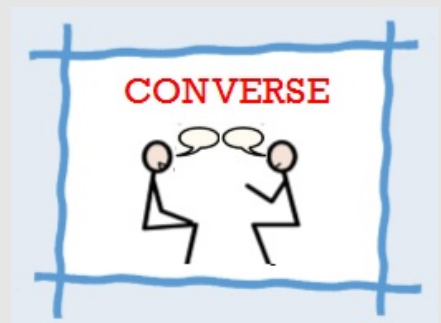
"Recycle plastic bottles"



**Garbage or Recycle?**

Categorize different items as something that goes in the garbage or goes in the recycling.

One switch for "garbage", one switch for "recycling".



**Joke**

Students can tell each other Earth Day themed jokes.



**Be an Activist**

Activism means so much more when students do something they care about! Program in different ways that students

Ex.  
Student 1: "I have an obsession with wind farms"  
Student 2: "Really?"  
Student 1: "Yes, I'm a huge fan"

can help make the Earth a better place.  
Students scan through the options and choose the one they want to do! Then do that thing together



Different devices can perform different ideas in this section.

Be aware of what device you have and what functions it can perform.

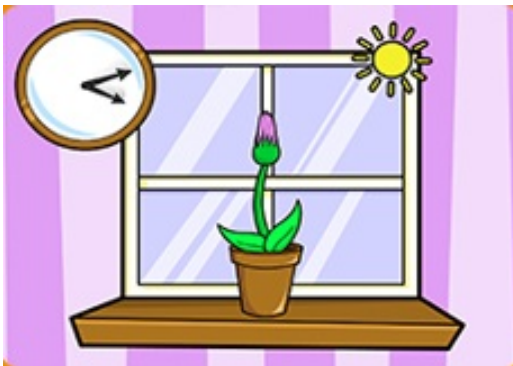
Only the SmoothTalker can operate in all six of the above modes

[SHOP NOW](#)

## HelpKidzLearn Earth Day Activities

HelpKidzLearn is a subscription service of ready made, accessible learning activities (access using a mouse, touch screen, interactive classroom display, single switch, two switches, and eye gaze).

The following are available activities that address this week's theme of Earth Day



### Watch Me Grow

Skills: choice making, creativity, critical thinking, early science

A linear choice making activity with consequences! Make creative choices for growing different plants, as well as important ones which will determine whether or not they grow. Will you be a successful plant grower?



### More Crazy Cats

Skills: timing, targeting

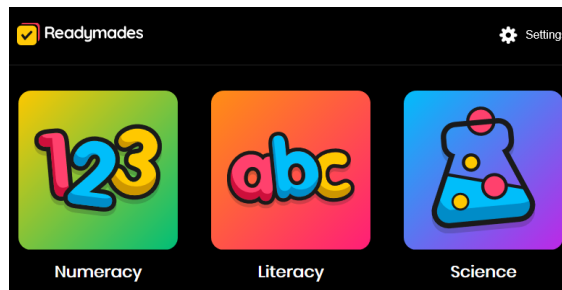
Cats don't go in the garbage!

Watch the garbage cans and wait for a crazy cat to peek out! Click that garbage can, look at it with eye gaze, or press the switch at the right time to catch the cat! Watch them come out of the garbage can to play a fun song.

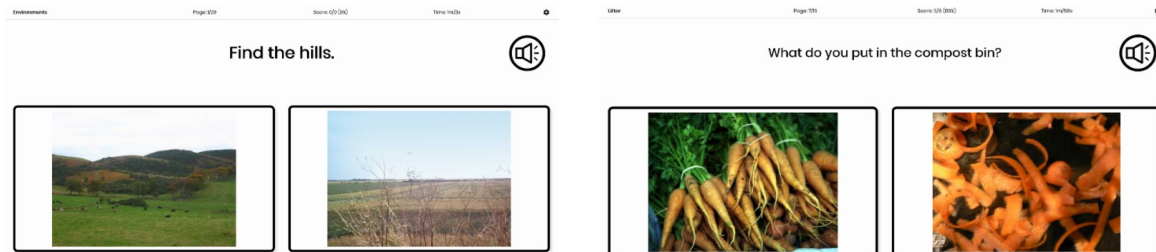
[Click here to access the HelpKidzLearn Games and Activities](#)

## Chooselt! Ready Mades Earth Day Activities

Chooselt! Ready Mades are a subscription service with ready-made, multiple choice activities



The following are ready-made activities that address this week's theme of Earth Day



### Environments

Find it in:  
Science - Foundation Stage: Living Things

Identify pictures of different types of environments

### Litter

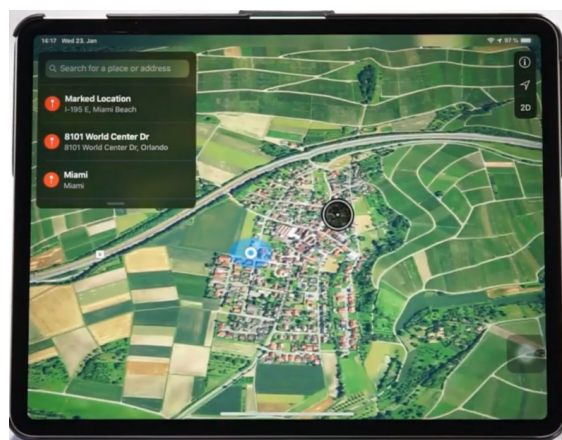
Find it in:  
Science - Foundation Stage: Living Things

Identify where different items should go when we're done with them.

Click here to access the ChooseIt! Ready Mades

## AMAneo BTi Assistive Mouse Adaptor

The [AMAneo BTi](#) is an assistive mouse adaptor that allows you to use a mouse or assistive mouse with an iPad or iPhone



Use a mouse connected via the AMAneo BTi to explore google maps. Change to satellite mode to see what the land looks like from above, or use street view to explore closer to the ground. Use your mouse or joystick to explore all around the map!

## Inclusive ClassVR

[Inclusive ClassVR](#) provides immersive, sensory experiences where students can safely interact and explore virtual worlds and environments without boundaries or the restriction of physical limitations.



Explore many different landscapes and environments all around the world using Virtual Reality. Create a playlist for your students full of different examples of the same environment (ex. different rainforests), or an assortment of different environments (ex. rainforests, deserts, cities, fields, swamps, etc). Create a lesson that fits your needs and celebrates our magnificent Earth!

## Community Collaboration

When we say we're a community, we mean that. We want to hear from you! Did you do something great in your classroom (or have you heard about another teacher that did) and you want to share your ideas with others? Do you have an idea for a theme or is there something specific you want to get more ideas on? Teaching is a cooperative profession - let's learn from each other! Email your comments or ideas to [info@inclusivetlc.com](mailto:info@inclusivetlc.com) and start sharing!

---

## Quote of the Week

"Education is the most powerful weapon which you can use to change the world"

Inclusive TLC | 704-243-3622 | [info@inclusivetlc.com](mailto:info@inclusivetlc.com) | [www.inclusivetlc.com](http://www.inclusivetlc.com)

STAY CONNECTED

