



Galapagos  
Conservation  
Trust



**ANNUAL REPORT** **2015**  
CONSERVING THE ENCHANTED ISLES FOR 20 YEARS

# CHIEF EXECUTIVE'S OVERVIEW



Since 1995, the Galapagos Conservation Trust has been working to promote the conservation and sustainable development of Galapagos and its unique biodiversity. We are the only UK organisation focused exclusively on working to protect the Galapagos Islands.

2015 marked the 20th anniversary for the Galapagos Conservation Trust and I am excited to have joined the charity at a time when our work is more important than ever.

Over the past decades Galapagos has seen unprecedented growth and development, and this report focuses on six projects we have undertaken in 2015 on long term conservation and sustainability of the Islands through four key areas of our work – controlling invasive species, conserving endemic species, marine conservation and education and sustainability. I would like to say a huge thank you to Ian Dunn who led the team for three years and initiated our successful Discovering Galapagos education programme.

Looking to the future, we will be launching our new three year strategic plan in 2017 which will see us strive to support even more impactful science and conservation projects whilst expanding our education and sustainability work on the Islands.

I am hugely optimistic about the future, and I would like to say a massive thank you to all of our supporters, partners and dedicated staff team and Board. With your support I know we can aid even more projects to ensure the conservation of the incredible and unique Galapagos Islands.

**Sharon Johnson** Chief Executive  
Galapagos Conservation Trust

## What we do:

- Contribute to the successful management of the Galapagos ecosystem
- Raise awareness and funds for the conservation needs of Galapagos
- Raise funds to support the sustainable development of Galapagos
- Provide educational resources in support of Ecuadorian and UK curricula; teaching the facts, issues, threats, opportunities and uniqueness of Galapagos
- Act as the primary source of information and commentary in the UK on the conservation and sustainable development of Galapagos



# OUR IMPACT IN 2015



**12** **NEW WHALE SHARKS TAGGED**

**8** **MANGROVE FINCH CHICKS RELEASED INTO THE WILD**

**OVER 500** **PEOPLE ENGAGED WITH GCT THROUGH TWO KEY EVENTS**

**20** **PEOPLE VOLUNTEERED OVER 500 HOURS**

**LAUNCHED RAISING OVER £30k**

**9** **PROJECTS DELIVERED IN GALAPAGOS**

**OVER 60 TORTOISES TRACKED**

**41,000** **PEOPLE LEARNING THROUGH DISCOVERING GALAPAGOS**

**81** **PENGUINS IDENTIFIED AND GIVEN FULL HEALTH CHECKS**

**5** **BULLHEAD SHARKS SPOTTED**

# CONTROLLING INVASIVE SPECIES

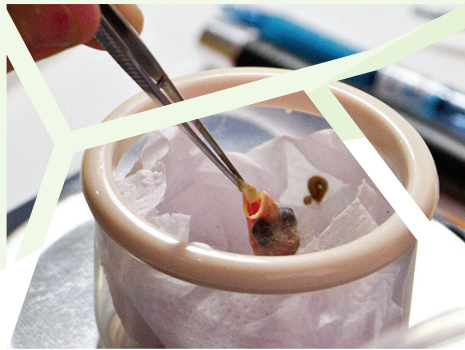
**Invasive species** are the single largest threat to Galapagos' wildlife. Introduced rats, parasitic flies and non-native plants are having devastating effects on the natural habitats of the Islands. We support efforts to control these alien species and reduce the damage they cause.

## Mangrove Finch Project

With a population of less than 100 individuals, the mangrove finch is the most endangered bird in Galapagos. We are the principle funders of the Mangrove Finch Project; a collaborative initiative between the Charles Darwin Foundation, the Galapagos National Park, Durrell Wildlife Conservation Trust and San Diego Zoo Global, aiming to increase the mangrove finch population before it is too late.

The Mangrove Finch Project is working to boost the birds' numbers by hand-rearing chicks before releasing them back into the wild. By doing this the project team are able to give the chicks a head start in life, saving them from the threat of the introduced parasitic fly *Philornis downsi*.

In 2015 a workshop was held in Galapagos with key scientists to develop a longer-term management plan for the conservation of this species, which will be released in 2016.



**8**   
MANGROVE FINCH  
CHICKS RELEASED  
INTO THE  
WILD

# CONSERVING ENDEMIC SPECIES

The **unique** environmental conditions in Galapagos have driven the evolution of many plants and animals that are found nowhere else on Earth. Some species such as the mangrove finches, Galapagos giant tortoises and Floreana mockingbirds, are threatened with extinction. We support projects that help to inform the long-term conservation of these unique species.

## Giant Tortoise Ecology Movement Programme

In 2015 we continued to support the work of Dr Steve Blake of the Galapagos Tortoise Movement Ecology Programme, whose team monitors the movements of adult giant tortoises on Santa Cruz, Espanola and Isabela. The team focused on the 'lost years' of tortoise movements by tracking hatchlings for the first time. Little is known about the early years of the giant tortoise's life, but this project will provide us with better understanding of what affects egg and hatchling survival.

The project team have also continued to develop their outreach programme. Starting with a single school on Santa Cruz, they have now expanded to provide educational materials for an archipelago-wide experiential learning programme. So far over 500 students have directly participated in the programme in Galapagos.

## Seabird Surveys

We have been supporting the penguin and cormorant monitoring team for over five years. The continuation of the monitoring of these species is essential if we are to improve our knowledge of the relationship between seabird population dynamics and environmental changes. This year presented a particularly vital year for the penguin and cormorant study with the El Niño weather event arriving in Galapagos towards the end of 2015.

The project team carried out three field trips to monitor seabirds. Population counts were taken, and feather and tissue samples were collected to test for heavy metals and other marine pollutants. Comparing this year's data to previous years showed populations of both species are relatively stable, with estimates around 1,500 penguins and 1,600 cormorants. We are supporting this vital project into 2016 with funds raised from the Winter Penguin Appeal to assess how El Niño is affecting these vulnerable species.

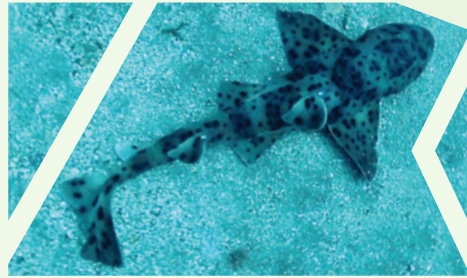
  
**OVER  
60**  
TORTOISES  
TRACKED

**81**  
PENGUINS  
IDENTIFIED  
AND GIVEN  
FULL HEALTH  
CHECKS 



# MARINE CONSERVATION

**The Galapagos Marine Reserve** hosts an amazing diversity of marine wildlife including Galapagos penguins, whale sharks and marine iguanas. We support projects that increase our understanding of these species and contribute to the successful management of the marine reserve.



**Galapagos Whale Shark Project**  
Founded in 2011, this project is continuing to boost scientific understanding of the whale shark and enhance conservation management within the Galapagos Marine Reserve. Over the last four years, researchers have tagged 49 individuals and successfully tracked shark migration routes from the Galapagos Islands to the coast of mainland Ecuador and Northern Peru. Data suggests that over 700 whale sharks pass through the Galapagos each year, the majority of these being mature pregnant females. In 2015 a world first was achieved by the project after a pregnant female spotted in 2011 was spotted pregnant again in 2015 – the first ever data on reproductive frequency in whale sharks. 15 whale sharks have also been added to the global database through photo identification during this year.

**Bullhead Shark Project**  
Spanning three years, this project will uncover the mysteries of this shark, which has been forgotten from science since its discovery 175 years ago. The project is using research cruises, dive surveys and citizen science to find out how many bullhead sharks there are in the Galapagos Marine Reserve, where they breed and feed, what threats they face, and how they can be protected. The first research cruise was undertaken in October 2015, with local volunteers and Ecuadorian researchers participating in the data collection. The first ever Shark Day was held in Galapagos by the project team to share their findings with the local community as well as to raise awareness of the bullhead shark.

**12** NEW WHALE SHARKS TAGGED

**5** BULLHEAD SHARKS SPOTTED



# EDUCATION AND SUSTAINABILITY

**Lasting change** must begin with engaging and educating today's students and early-career decision makers – our future conservation ambassadors. We lead and coordinate an award-winning international education programme, **Discovering Galapagos**, to inspire the next generation both in Galapagos, on mainland Ecuador and here in the UK.



**Discovering Galapagos**  
We provide bilingual educational resources, support for educators and the opportunity to connect school groups on the Islands, in mainland Ecuador and around the world. We are inspiring the younger generation to conserve their natural world. Discovering Galapagos has two websites, one in English and one in Spanish, and is used around the world by teachers and students who want to learn more about the Galapagos Islands. 2015 saw the continued improvement and addition of content to Discovering Galapagos. In 2016 we will be using the resources to undertake education and sustainability projects in Galapagos schools and with the local community.



**41,000** PEOPLE LEARNING THROUGH DISCOVERING GALAPAGOS

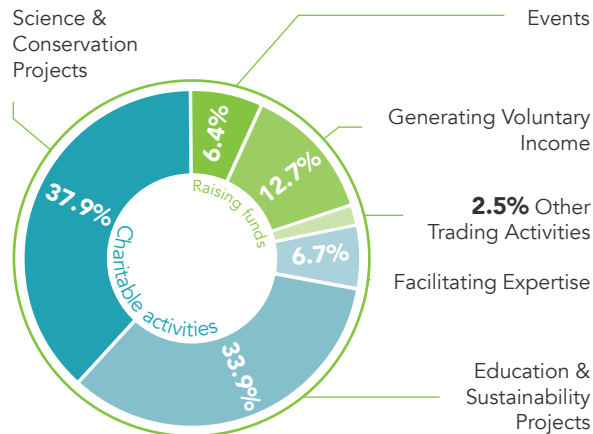


# FINANCIAL REPORT

## Statement of Financial Activities

For year ended 31 December 2015	Unrestricted Funds £	Restricted Funds £	Total 2015 £	Total 2014 £
<b>Income</b>				
Donations & Legacies	125,390	85,022	210,412	348,792
Charitable Activities	117,363		117,363	130,686
Other trading activities	109,776	39,859	149,635	197,409
Investment income	1,268		1,268	1,347
<b>Total income</b>	<b>353,797</b>	<b>124,881</b>	<b>478,678</b>	<b>678,234</b>
<b>Expenditure</b>				
Raising Funds	113,229	3,734	116,963	121,238
Charitable Activities	308,394	115,090	423,484	508,124
<b>Total expenditure</b>	<b>421,623</b>	<b>118,824</b>	<b>540,447</b>	<b>629,362</b>
<b>Net movement in funds</b>	<b>(67,826)</b>	<b>6,057</b>	<b>(61,769)</b>	<b>48,872</b>
<b>Reconciliation of funds</b>				
Total funds brought forward	289,742	136,811	426,553	377,681
<b>Total funds carried forward</b>	<b>221,916</b>	<b>142,868</b>	<b>364,784</b>	<b>426,553</b>

## Expenditure in 2015



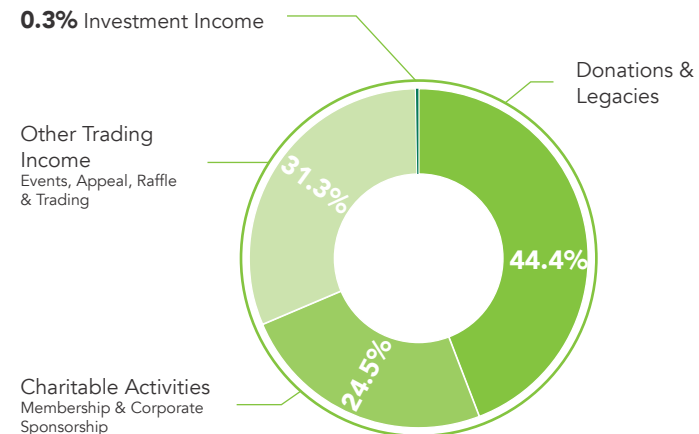
These financial statements are a summary of information extracted from the full financial statements. The full report and accounts were approved by the Trustees on 26 May 2016 and have been submitted to the Charity Commission and Registrar of Companies. These summarised financial statements may not contain sufficient information to allow for a full understanding of the financial affairs of Galapagos Conservation Trust. For further information, the full annual accounts, the independent examiner's report on those accounts and the Trustees' annual report should be consulted. Copies of these can be obtained from Galapagos Conservation Trust, 28 Portland Place, London W1B 1LY, UK, by email at gct@gct.org or by phone on 020 7399 7440.

Approved by the Board and signed on its behalf by: Dr Mark Collins and Jonathan Lea, 26 May 2016

## Balance Sheet

As of December 2015	2015 £	2015 £	2014 £	2014 £
<b>Fixed assets</b>				
Tangible fixed assets		760		3,975
<b>Current assets</b>				
Stock			1,458	
Debtors	22,100		11,821	
Cash and bank	419,467		509,486	
<b>Total</b>	<b>441,567</b>		<b>522,765</b>	
Creditors: Amounts falling due within one year	(77,543)		(100,187)	
Net current assets		364,024		422,578
<b>Net assets</b>		<b>364,784</b>		<b>426,553</b>
<b>Restricted Funds</b>				
		142,868		136,811
<b>Unrestricted Funds</b>				
Designated funds		65,000		113,500
General funds		156,916		176,242
<b>Total funds</b>		<b>364,784</b>		<b>426,553</b>

## Income in 2015



**Independent Examiner:**  
Wilkins Kennedy LLP  
Bridge House  
London, SE1 9QR

**Bankers**  
Lloyds Bank plc  
157 Wandsworth High Street  
London  
SW18 4JA

CAFCASH Ltd  
Kings Hill  
West Malling  
Kent  
ME19 4TA

CCLA COIF  
Senator House  
85 Queen Street  
London  
EC4V 4ET

# OUR SUPPORTERS

We would like to thank all of our supporters who helped us to protect and conserve the Galapagos Islands in 2015.

## Donations £10,000 and over

- British Chelonia Trust
- The Dr Mortimer & Theresa Sackler Foundation
- The Sackler Trust
- Evolution Education Trust
- The Bromley Trust
- The Ernest Kleinwort Charitable Trust
- The Woodspring Trust

## Donations £1,000 and over

- Chris Spooner
- Langdale Trust
- Panton Trust
- Robert Stebbings
- Steppes Travel
- The Deep
- Think Galapagos
- Galapagos Travel Centre

## GALAPAGOS GUARDIANS

Geoffrey Ball Csaba Barta Edward & Sally Benthall David & Rosalind Cleevely Annie Coxon Paul & Jill Davis Olivia Cleevely & Martin Edge Christine Edwards Penelope Eve Patrick & Barbara Gallagher David J Girling Sir Nicholas & Lady Judith Goodison Claire Halpin Sue Henning Daniel Hochberg Mavis Hughes Roderick & Elizabeth Jack Margaret Susan Jackson Robin & Diana Jakeways Chris John Carol Kemm Darren Leftwich Camilla Legh Mark & Liza Loveday Mr & Mrs Michael Saville Carolyn Michie Renate Nahum Barry & Elizabeth Phillips Julian Ranger Sarah Reynolds David & Katherine Soanes Christopher Spooner Nicholas Spooner Thomas Kenneth Spooner Catherine Thomas Andrew Thompson Mr & Mrs Timothy Cox Jane Tozer Edmund Truell Arthur James Wheeler David Wiltshire John & Jill Woodley

*Galapagos Guardians are life members who have given over £2000*



# HOW YOU CAN HELP

There are many ways you can get involved with our work. Whether you attend one of our events or adopt your very own Galapagos animal, your support is vital - and you can rest assured, however big or small your contribution, it is helping us achieve our mission of a sustainable Galapagos.



## GCT Membership

From as little as £3 per month, as a member you are providing vital financial support to improve the environmental sustainability of the Islands and you are part of a strong conservation community to protect Galapagos and its wildlife. You will receive a giant tortoise pin badge when you join, together with our bi-annual magazine, regular email updates and invites to events and special promotions.

## Life Membership

For a one off donation, you can upgrade your membership to become a Galapagos Friend for Life or a Galapagos Guardian. Our Life Members make up an exclusive, highly motivated group of GCT supporters and receive extra benefits including invites to exclusive events and a welcome gift.

## Legacies

Leaving a gift in your Will is a valuable and lasting way you can support Galapagos. GCT has been honoured to receive a variety of legacies. If you do honour us with a gift in your Will, we will always uphold your wishes and your vision for your legacy. No matter the size, each gift is incredibly important to the future of Galapagos.

**For other ways to help** please visit our website [galapagosconservation.org.uk](http://galapagosconservation.org.uk), email [gct@gct.org](mailto:gct@gct.org) or call us on 020 7399 7440.



## Volunteer Spotlight

Volunteers have been helping GCT since our creation 20 years ago and continue as an integral part of our organisation.

We would like to thank all our volunteers for the time and skills they give to GCT - from stuffing thousands of letters to website translations; from event support to our Board of Trustees, we would not be able to do what we do without your support. By volunteering your time and effort, you enable the charity to have a greater conservation impact in Galapagos.

We would like to say a special thank you to Peter Robinson who has volunteered his time to GCT for an incredible 10 years!



Galapagos  
Conservation  
Trust

**Galapagos Conservation Trust**  
Charles Darwin Suite  
28 Portland Place  
London  
W1B 1LY

[galapagosconservation.org.uk](http://galapagosconservation.org.uk)

+44 (0)20 7399 7440

[gct@gct.org](mailto:gct@gct.org)  

Registered Charity No. 1043470

### **Trustees**

Mark Collins (Chair) / Jonathan Lea (Treasurer) /  
Paul Corral / Louise Davies / Simon Dickson /  
Michael Drake / Derek Humphries / Roger  
Lawson / Rebecca Nesbit / Ruth Ruderham /  
Marta Tufet

### **Ambassadors**

Monty Halls (President) / Janet Barber / Sir James  
Barlow BT. / Angela Darwin / Sarah Darwin /  
Julian Fitter / Stanley Johnson / Randal Keynes /  
Dorothy Latsis / Godfrey Merlin / Henry Nicholls /  
Jonathan and Angela Scott / Nigel Sitwell /  
Professor Ian Swingland OBE, Phd DSC / Antje  
Steinfurth / Jennifer Stone / Emma Thompson

### **Photo Credits**

Cover - Lisa Brown / Pg 2 - Tim Poole, Michael Dvorak & Juan  
Carlos Avila / Pg 4 - Sue Maturin / Pg 5 - Vanessa Green & Prof  
W G Hale / Pg 6 - Jonathan Green & Max Hirschfeld  
Pg 7 - Christian Ziegler