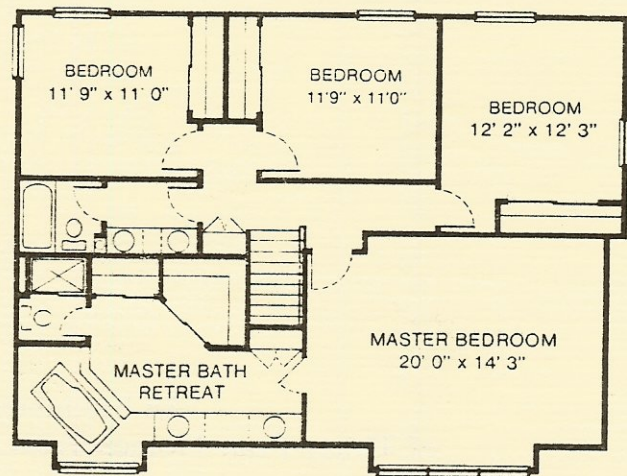


MAIN LEVEL

Illustrations and floor plans are artist's conceptions only and are not intended to show specific detailing.

All dimensions are approximate.

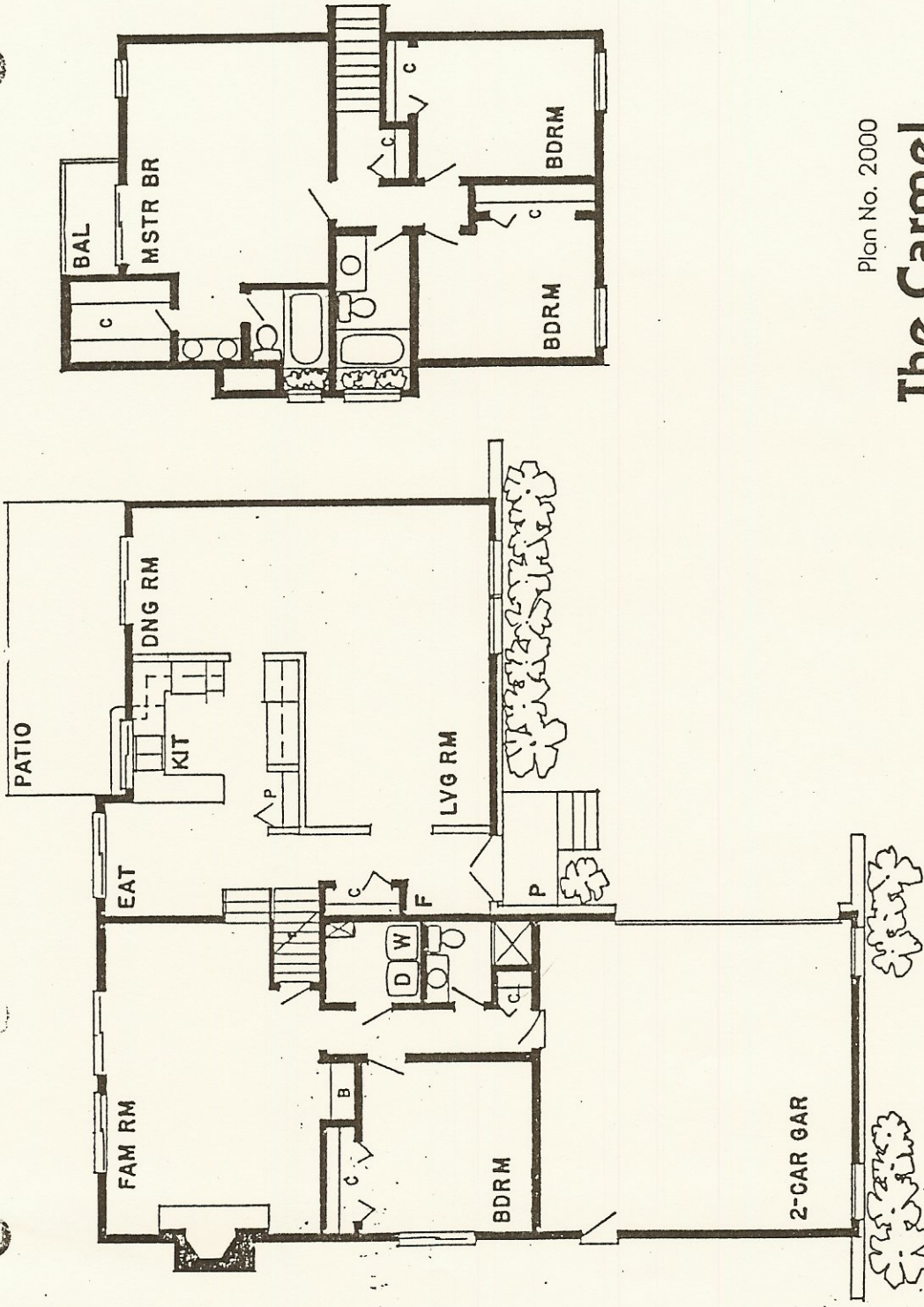
Elevations and features will be different on each home. Check with salesperson for specifics.



UPPER LEVEL



Sanford Homes

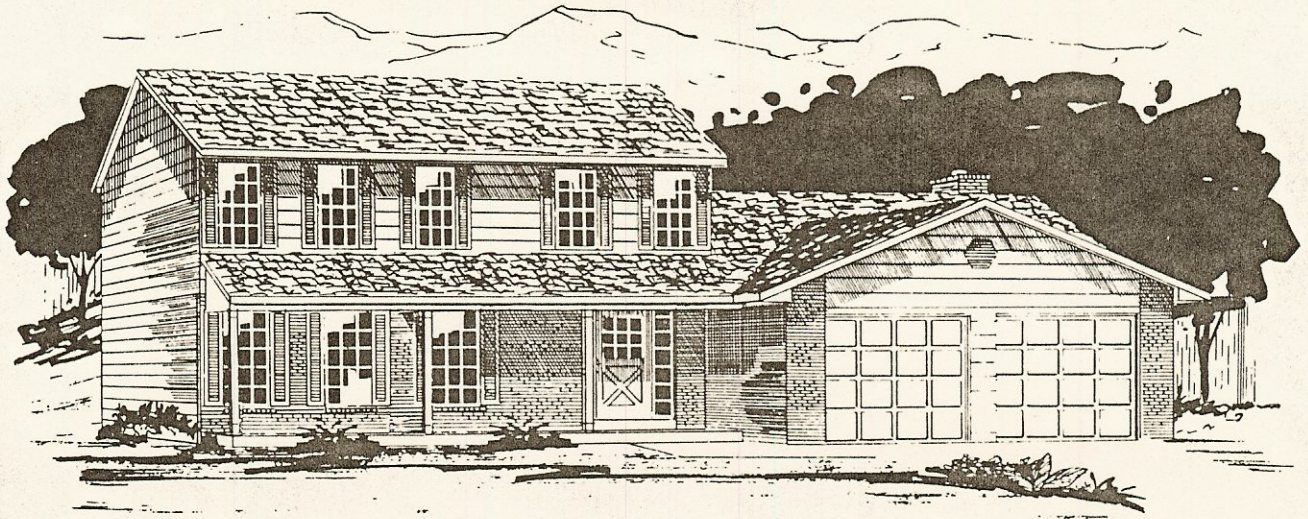


Plan No. 2000

The Camel

Tri-Level

- 4 oversized bedrooms • 3 baths • Shake roof • Large double Car Garage • Vaulted beamed ceiling, living, dining and kitchen areas • Vaulted beamed ceiling in master bedroom • Formal dining room
- Eating nook off kitchen • Pass-through bar from kitchen to large patio off dining room. Formal entry.
- Beamed family room w/custom fireplace • Large patio off family room • Planter, windows in bathrooms • Stained wood railings & woodwork • Carpeting throughout • Double sinks in master bath • Large walk-in closet w/cedar floor in master bedroom • Bedroom closets w/cedar floors • Designer light fixtures • Garage entry, third level • Utility room • Pantry • Optional 4th level basement
- Optional balcony off master bedroom • Optional wood french doors off of dining, family room and master bedroom • Optional wet bar • Optional quarry tile formal foyer.



stuart

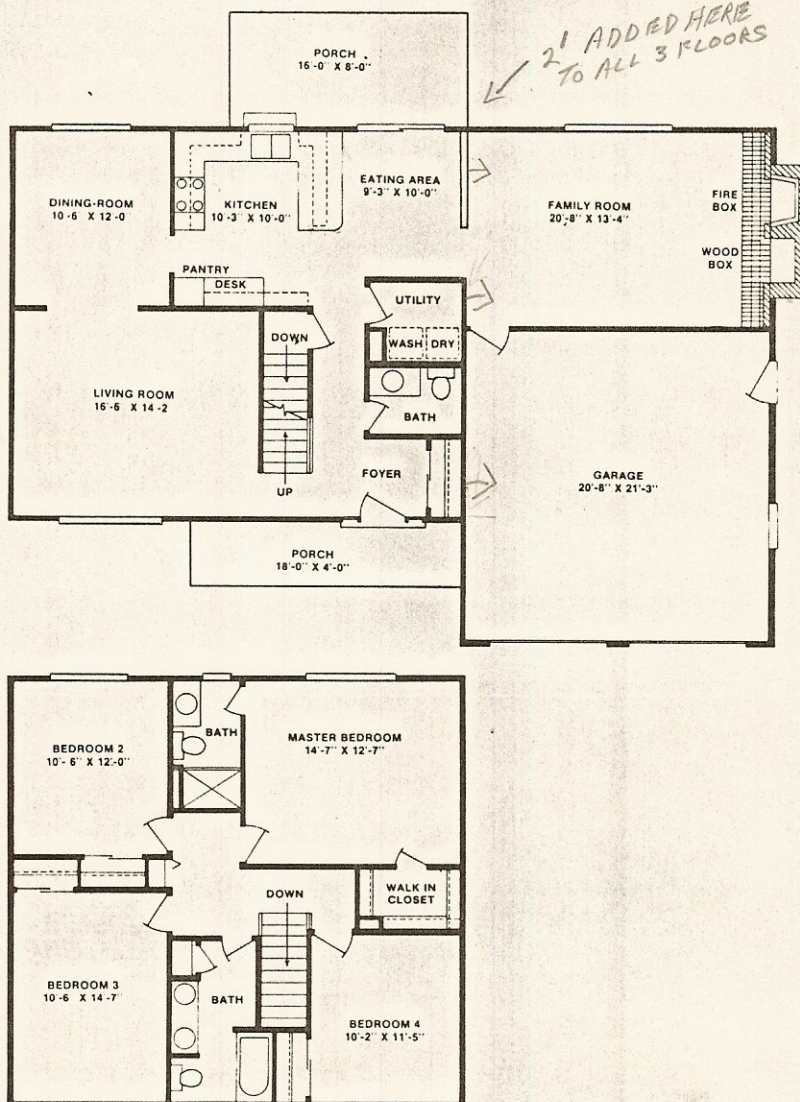
236
2420 Square Feet **Plus** basement

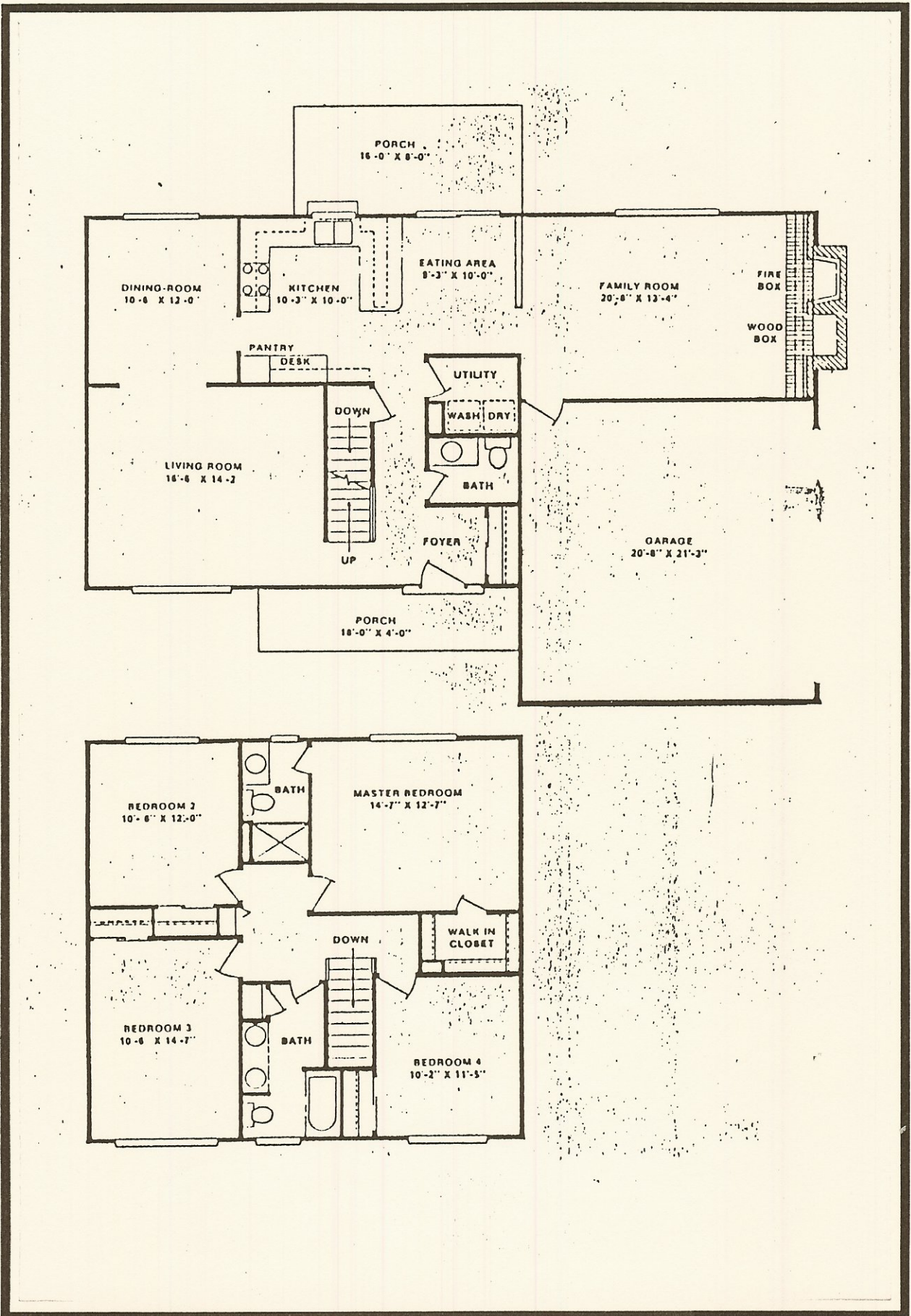
A traditional two story home with four large bedrooms, three baths and main floor utilities. A spacious living room and formal dining room with hand rubbed stained woodwork. Paneled family room with an authentic brick, wood burning fireplace and woodbox plus book shelves on each side to complete the traditional aire. ~~Your~~ choice of gleaming parquet or quarry tile entry.

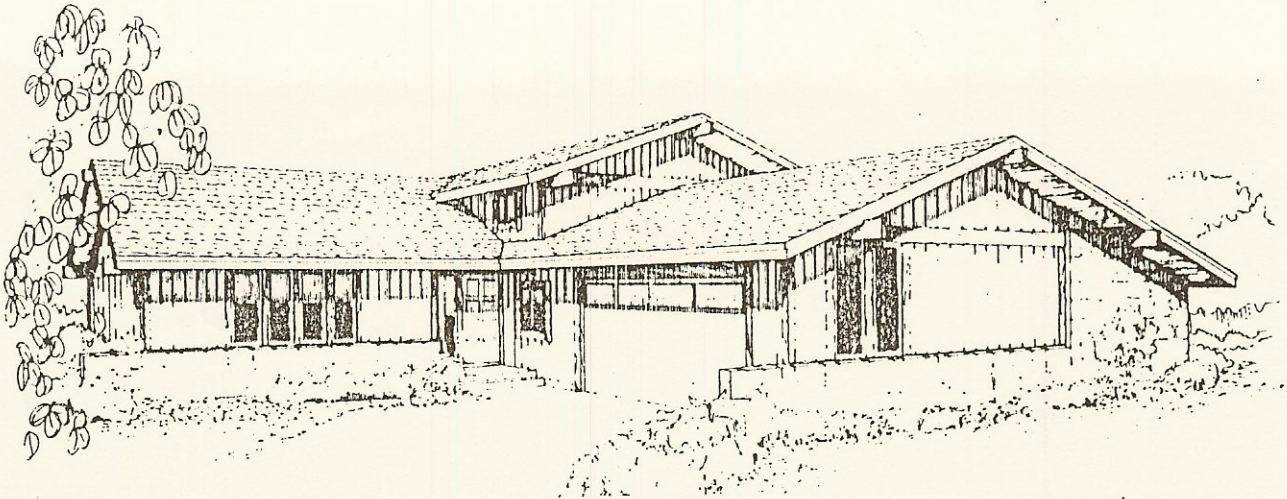
ATTIC FAN. SLATE
EXTRA OUTLETS (ELEC)

Covered front porch and patio. Shake shingle roof. General Electric self-cleaning range and dishwasher in the kitchen and solid oak cabinets. A marble top vanity in the powder room. Armstrong carpet and linoleum throughout. The full insulation package includes Thermopane windows. A two car garage and a full basement with rough-in for future bath. *(PARTIALLY FINISHED)*

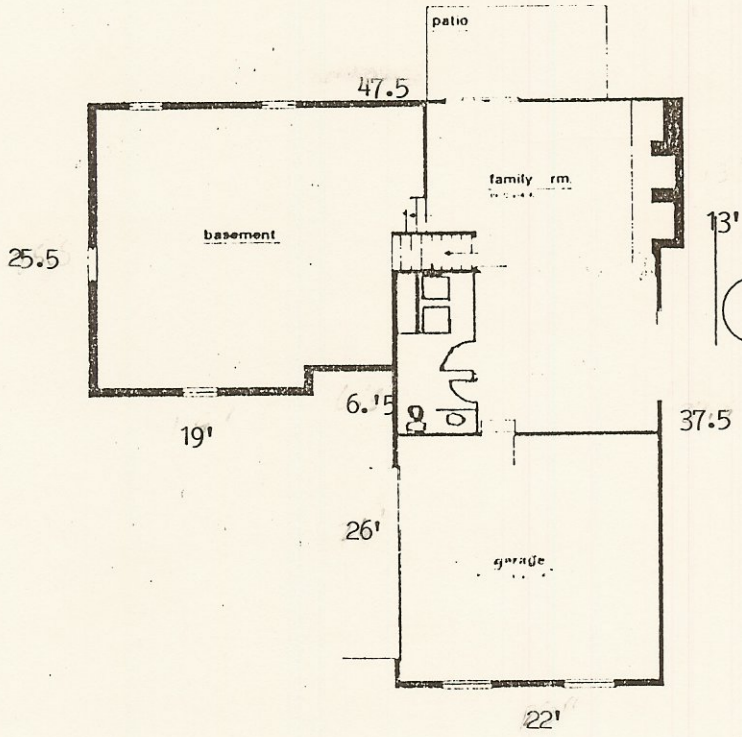
\$65,600





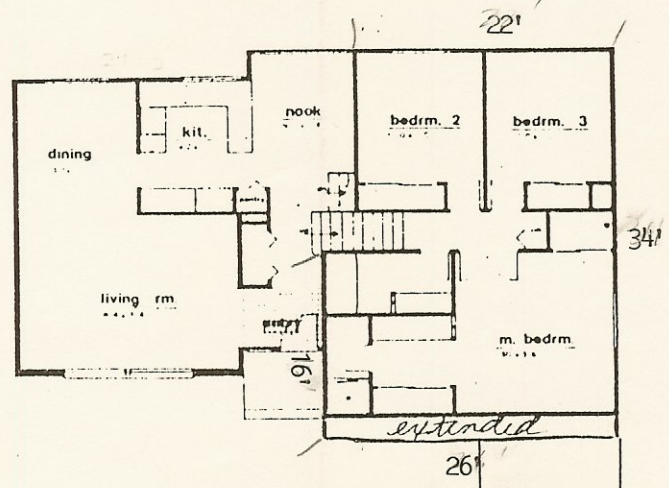


the smuggler



lower levels

middle level



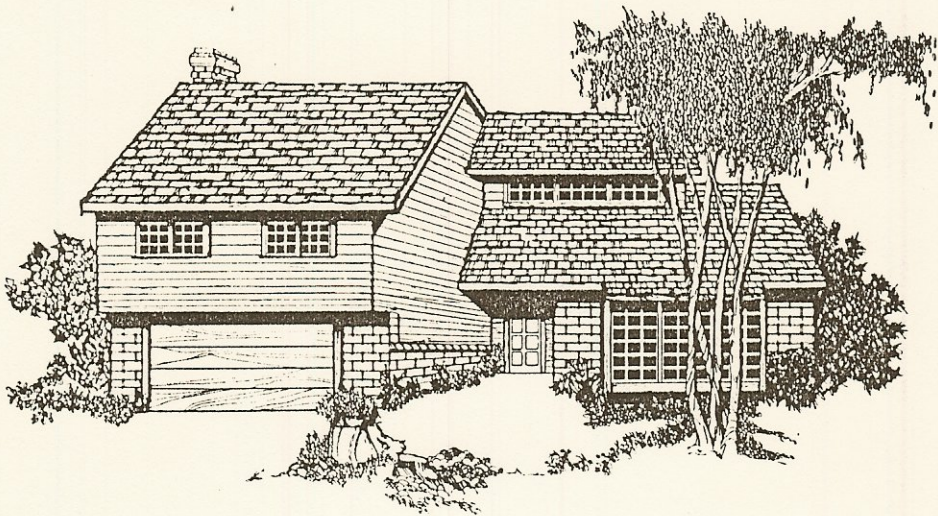
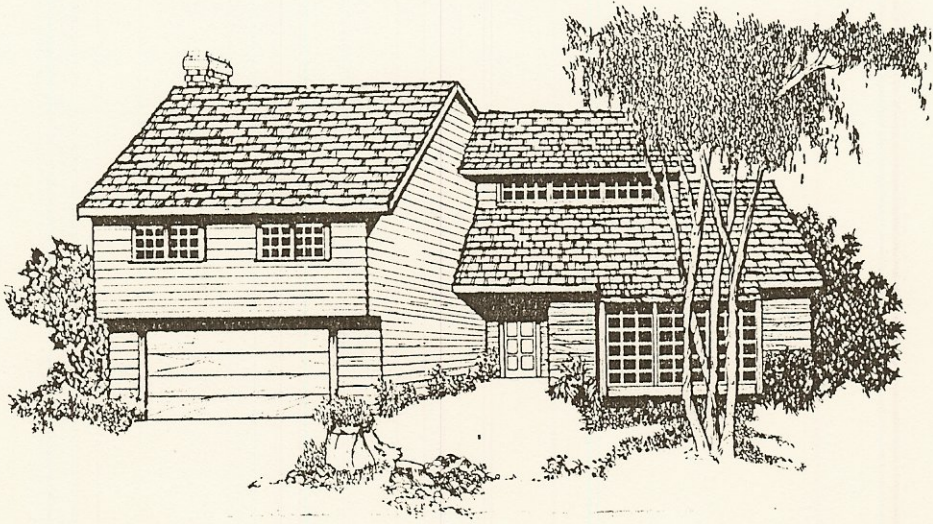
upper level

THE SMUGGLER: Model G-57; A versatile yet distinctive 2140 square foot home, this three bedroom tri-level offers an option for a fourth bedroom or study on the third level. Included in the base price is a basement level and a choice of a side or front entry garage.

drawings are artist's conceptions only — designs are subject to change without notice.

SILVER PLUME

PLAN 55

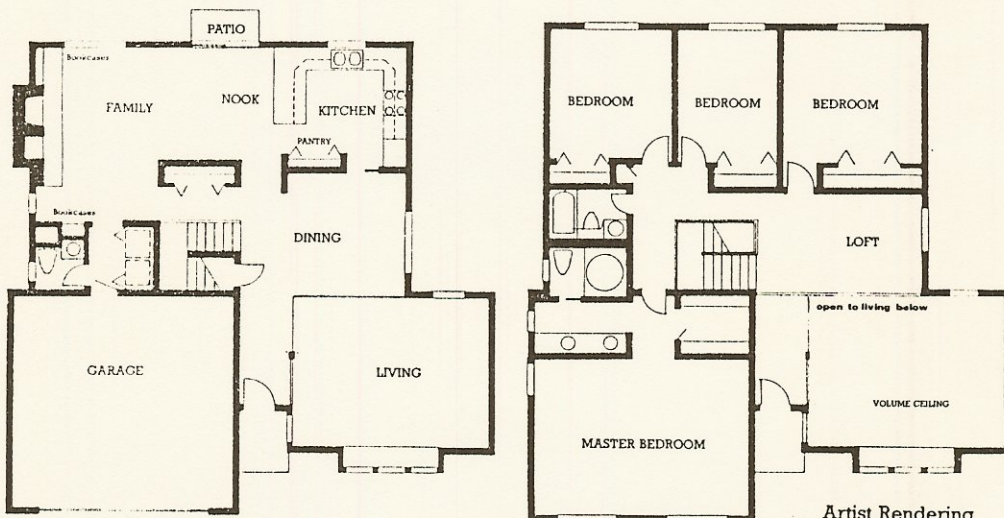


Unique Features

Loft study Gourmet kitchen with enormous pantry Vaulted master suite with walk-in closet, separate dressing area with double vanity and oval soak tub Oversized bedrooms throughout.

Optional Features

Cedar siding Patio cover Air conditioning Walk-in shower in master bath Fireplace in living room.



Artist Rendering