



Breathing New Life Into Your Water Course

Specialists in aquatic and bank weed control, pond and lake restoration, silt pumping and dredging, treatment and control of algae, reed, bulrush and water lily.

Business Park, Chertsey - Case Study

CASE STUDY— Business Park



The Challenge

Having made a multimillion pound investment in purchasing prestigious offices situated on 7 acres of parkland, the clients wanted the lake on the site renovated and restored to its former splendour.

The offices had been empty for 7 years, and the land surrounding the buildings was neglected and overgrown.

As the key focal point from the glass fronted building, the lake on the site was suffering from lack of maintenance. The overgrown trees had low branches over the water and the mass of rotting leaves had led to a build up of silt at the bottom of the lake. The pictures on the right show the site before work took place.

The inflow and outflow of the lake were positioned in such a way that a large proportion of the lake did not benefit from the movement /flow of water, and had therefore become stagnant.

Aquatic Solutions made it to the shortlist of 3 companies, but it was their suggestion of recycling the silt on site by creating silt receptors around the existing banks, in which to grow marginal plants, that won them the contract. Removing the silt from the site would have incurred great expense, and utilising the silt to further enhance the features of the lake would make the area an even more aesthetically pleasing landscape.

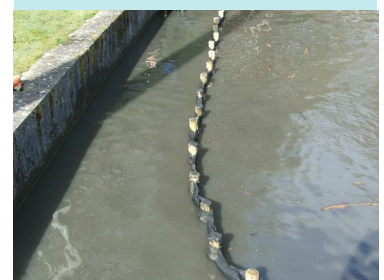
The Solution

Trees were the first thing to be addressed; they were pruned and shaped, and low branches overhanging the water were removed, in order to reduce the debris falling into the lake and to enhance aesthetics. Weeds, brambles and unwanted vegetation were cleared from the banks.

Nicospan Fencing was installed inside the existing border of the lake. Nicospan is a lightweight, permeable membrane ideal for vertical bank protection/creation. The fabric allows water to flow out, but retains soil, and allows the establishment of vegetation making it environmentally desirable.

The membrane has pockets through which posts can be inserted, and the posts are then driven into the bottom of the lake bed.

The shaping of the fence was carefully planned ensuring the flow of water was of benefit to all parts of the lake, and removing the issue of stagnant areas.



CASE STUDY— Business Park



The next phase of the project was to extract the build-up of silt from the bottom of the lake.

The **Truxor DM5000** machine, with a clamshell (bucket) attachment was used by the Aquatic Solutions team to excavate the silt and deposit it behind the Nicospan to create new banks, recycling the material and saving the huge cost of removal from site.

The Truxor is a lightweight and highly manoeuvrable vehicle, which is amphibious. It can be towed by a 4x4 vehicle and easily moves from land to water. Work can be carried out from the surface of the water, averting the risk of heavy machinery sinking into the silt.

The **silt** is made up of decomposed organic material, making it nutrient rich and an ideal compost ready for the next phase of the project — planting. Marginal plants including Canary Reed Grass, Common Reed, Bulrush, Purple loose strife, Water Mint, Iris, Pond Sedge, Hop Sedge, Soft Rush, Marsh Marigold and Water Forget-me-not were planted and protected from wildlife predation with the use of bird netting. Once the plants are established, the netting will be removed and these areas will further enhance the aesthetics of the lake.

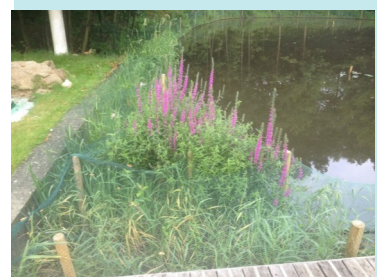
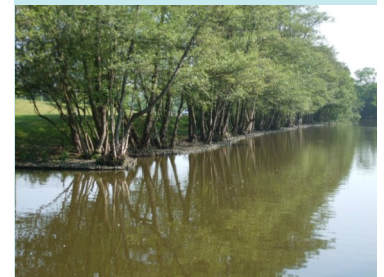
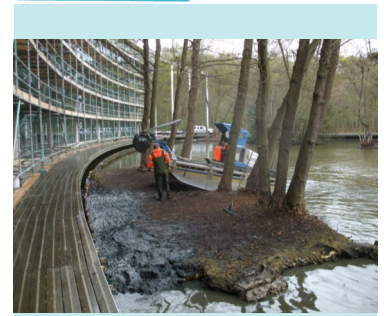
Aeration was improved with the installation of three fountains which will help keep the water oxygenated and finally, **water lilies** were planted to ensure some shade and protection for the fish and aquatic amphibians in the lake. The lilies will also become an attractive feature of the lake once established.

The Result

The photographs on the right show the results of the work. Trimmed trees, cleared weeds, and newly planted banks - protected with netting while the plants become established. Both flora and fauna will flourish when the marginal plants have established.

The dredged lake and its newly landscape banks now make a fitting focal point for the high spec, prestigious offices and a wonderful working environment for the staff.

Aquatic Solutions were retained to carry out further landscaping work on site as a result of the excellent work on the original pond and lake refurbishment.



The **Amphibious Truxor Machine** is an extremely lightweight, manoeuvrable vehicle, capable of working in the tightest and most challenging of aquatic environments.



Able to turn on its own axis and weighing less than 1,400 kg it is ideal for SSSI sites, golf courses, stately homes, private properties and public parks. It leaves little more than the mark of a human footprint, ensuring restorative work on project completion is minimal.

The Truxor's ability to work on or off water makes it ideal for a site where public access cannot be limited or where larger terrestrial machines are not suitable. With a wide range of tools available it is ideal for a variety of tasks within the water. The machine is transported on a flatbed trailer towed by a 4x4 vehicle, overcoming problems with access encountered when using heavy plant and machinery.

Attachments Available:

- Cutter Basket
- Large Cutter Bar
- Heavy Duty Cutter
- Collection Rake
- Clamshell Bucket
- Silt & Dredge Pumps
- Excavator



Aquatic Solutions UK service offer:

- Complete Aquatic Weed Control
- Silt Pumping and Dredging
- Pond and Lake Restoration
- Reed and Bulrush Control
- Water Lily Control
- Algae and Blanketweed Control
- Aeration
- Invasive weed control;
 - Japanese Knotweed
 - Himalayan Balsam
 - Giant Hogweed
 - Horsetail



Other

Aquatic Solutions

Case Studies

How flooding was controlled at The Eden Project [\[read more\]](#)

Creative reed cutting solves Bittern feeding for RSPB [\[read more\]](#)

Aquatic vehicle key to removing dangerous vegetation at water treatment plant [\[read more\]](#)

Aquatic weed and algae removal enables public to enjoy recreational pursuits [\[read more\]](#)

Aquatic Solutions UK

Tel/Fax: 01788 810614

Email: info@aquatic-solutions.co.uk

www.aquatic-solutions.co.uk



Invoice Address:

The Cart Barn, Montilo Lane,
Pailton, Rugby, CV23 0QN

Office Address:

Lawford Heath Farm, Lawford
Heath Lane, Lawford Heath,
Rugby, CV23 9EU