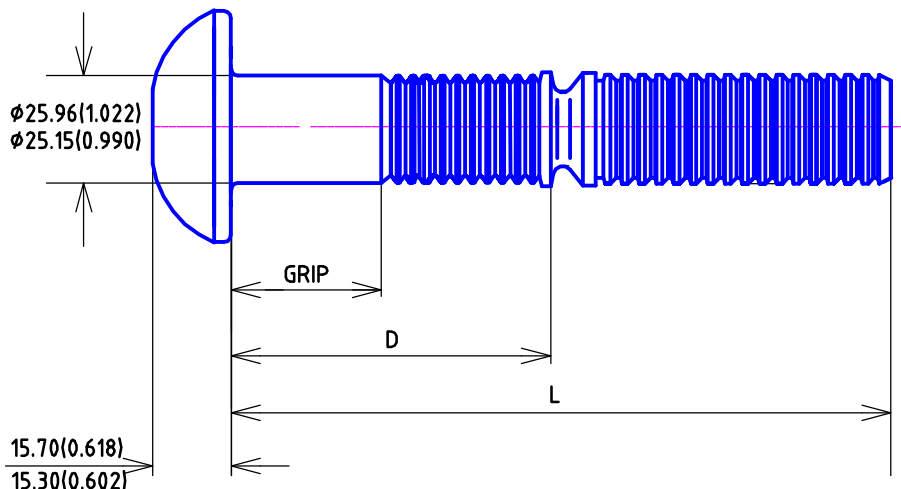
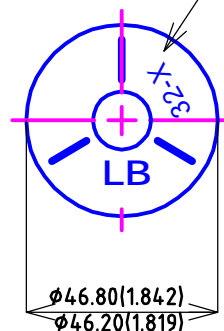


Unit:mm/inch



Letter Showing:
Min-Max Grip Range



MECHANICAL PROPERTIES:

Min Ultimate Tensile: 323 (KN)
Clamping Load: 229 (KN)
Min Shear Strength: 251 (KN)
Max Hole Diameter: 27(mm)

Raw Material Specification: ALLOY STEEL

Finish:

Plain (Black & Oiled)

APPROVED BY CUSTOMER For Manufacture	
Name: _____	Date: _____
Signature: _____	

1"	Part Number	Grip(mm)		Grip(inch)		D(mm)		D(inch)		L(mm)		L(inch)		Head Marking
		Min	Max	Min	Max	Min	Max	Min	Max	Min	Max	Min	Max	
32-08	ERSB32-08	12.70	19.05	0.50	0.75	52.05	53.25	2.05	2.10	135.03	139.53	5.32	5.49	32-8
32-12	ERSB32-12	19.05	25.40	0.75	1.00	58.40	59.60	2.30	2.35	141.38	145.88	5.57	5.74	32-12
32-16	ERSB32-16	25.40	31.75	1.00	1.25	64.75	65.95	2.55	2.60	147.73	152.23	5.82	5.99	32-16
32-20	ERSB32-20	31.75	38.10	1.25	1.50	71.10	72.30	2.80	2.85	154.08	158.58	6.07	6.24	32-20
32-24	ERSB32-24	38.10	44.45	1.50	1.75	77.45	78.65	3.05	3.10	160.43	164.93	6.32	6.49	32-24
32-28	ERSB32-28	44.45	50.80	1.75	2.00	83.80	85.00	3.30	3.35	166.78	171.28	6.57	6.74	32-28
32-32	ERSB32-32	50.80	57.15	2.00	2.25	90.15	91.35	3.55	3.60	173.13	177.63	6.82	6.99	32-32
32-36	ERSB32-36	57.15	63.50	2.25	2.50	96.50	97.70	3.80	3.85	179.48	183.98	7.07	7.24	32-36
32-40	ERSB32-40	63.50	69.85	2.50	2.75	102.85	104.05	4.05	4.10	185.83	190.33	7.32	7.49	32-40
32-44	ERSB32-44	69.85	76.20	2.75	3.00	109.20	110.40	4.30	4.35	192.18	196.68	7.57	7.74	32-44
32-48	ERSB32-48	76.20	82.55	3.00	3.25	115.55	116.75	4.55	4.60	198.53	203.03	7.82	7.99	32-48
32-52	ERSB32-52	82.55	88.90	3.25	3.50	121.90	123.10	4.80	4.85	204.90	209.40	8.07	8.24	32-52
32-56	ERSB32-56	88.90	95.25	3.50	3.75	128.30	129.50	5.05	5.10	211.20	215.70	8.31	8.49	32-56
32-60	ERSB32-60	95.25	101.60	3.75	4.00	134.60	135.80	5.30	5.35	217.60	222.10	8.57	8.74	32-60
32-64	ERSB32-64	101.60	107.95	4.00	4.25	141.00	142.20	5.55	5.60	223.90	228.40	8.81	8.99	32-64
32-68	ERSB32-68	107.95	114.30	4.25	4.50	147.30	148.50	5.80	5.85	230.30	234.80	9.07	9.24	32-68
32-72	ERSB32-72	114.30	120.65	4.50	4.75	153.70	154.90	6.05	6.10	236.60	241.10	9.31	9.49	32-72
32-76	ERSB32-76	120.65	127.00	4.75	5.00	160.00	161.20	6.30	6.35	242.98	247.48	9.57	9.74	32-76

No.	Alternation:	2013.6.20		
		Date:	Check:	Approved:

1" Round Head Lock Pins	Customer's P/No.:
	Customer's Drawing: