



FENLAND
WINDOWS & CONSERVATORIES

*Paul
Fellows*

THERMALLY BROKEN ALUMINIUM
ROOFLIGHTS

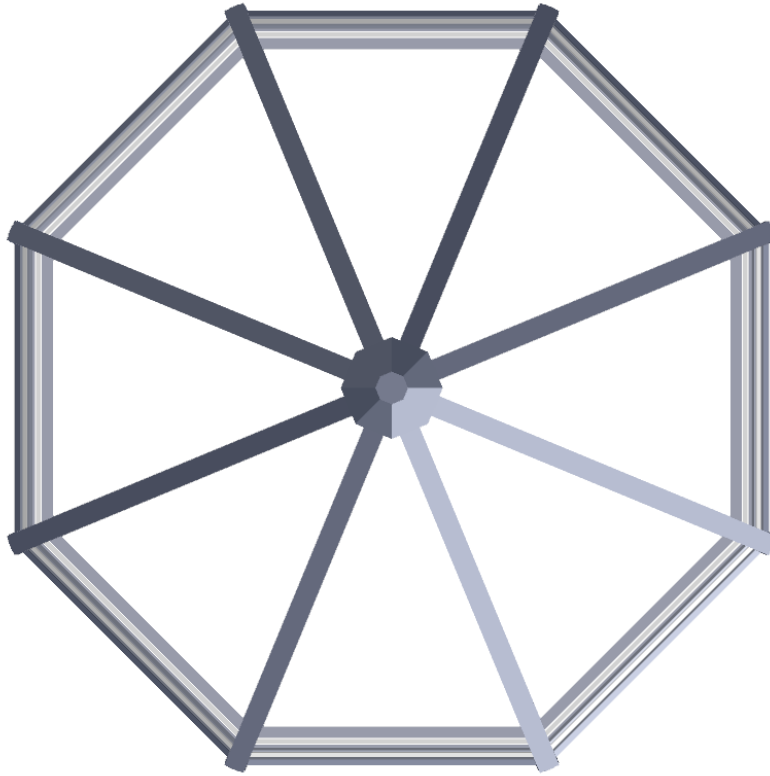


FENLAND
WINDOWS & CONSERVATORIES

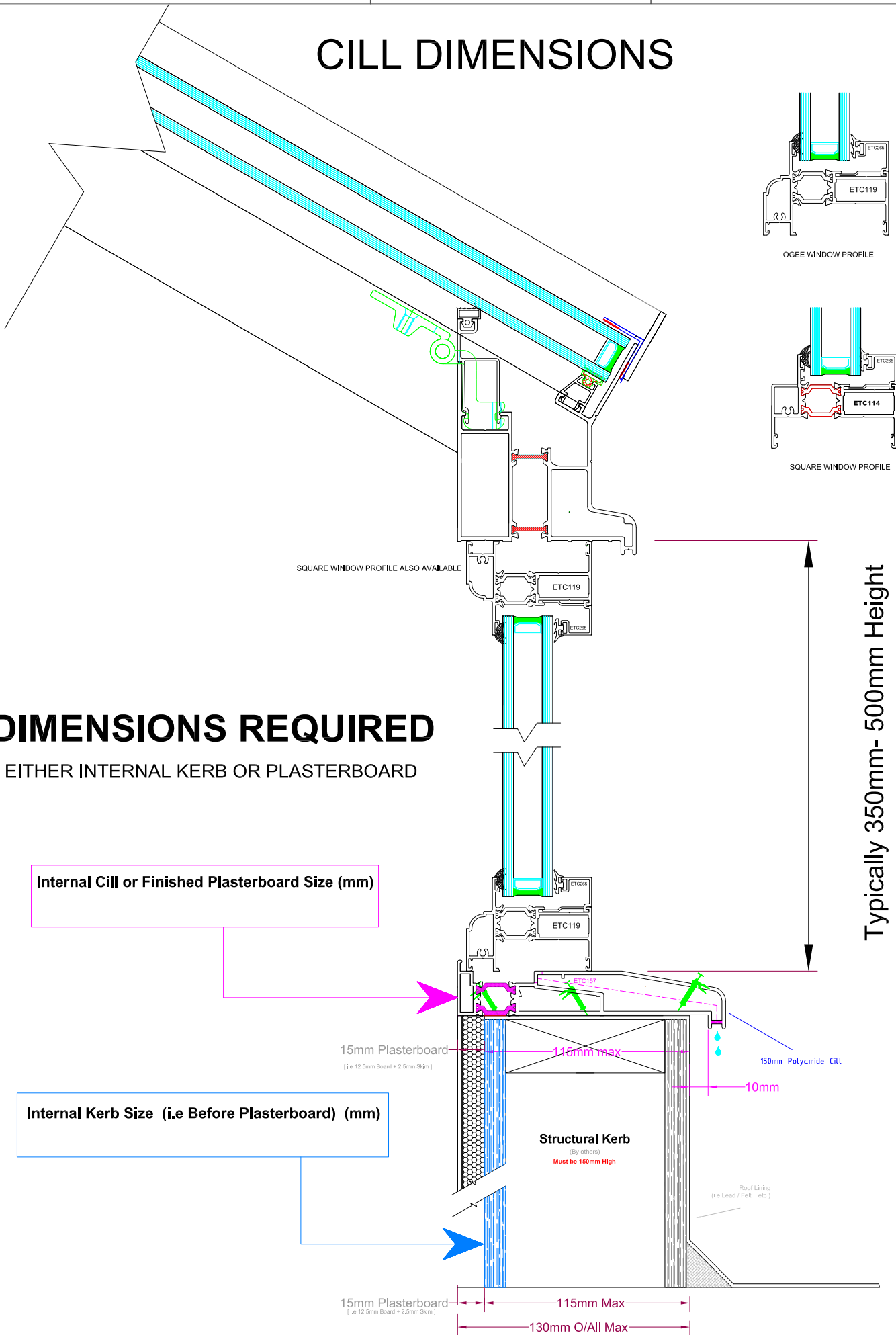
*Paul
Fellows*

(Scaled 3D Image) Roof shown – 1800mm Overall x 30 deg pitch

External View



CILL DIMENSIONS



DIMENSIONS REQUIRED

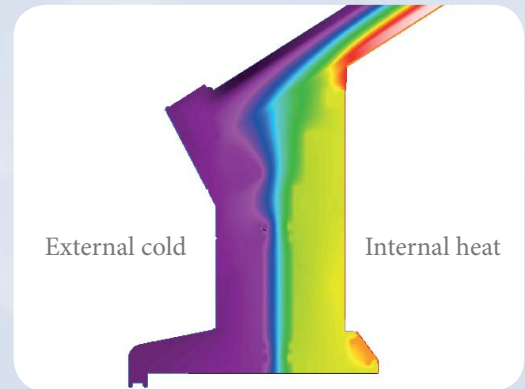
EITHER INTERNAL KERB OR PLASTERBOARD

Natural choice for natural light

What does thermally broken mean?

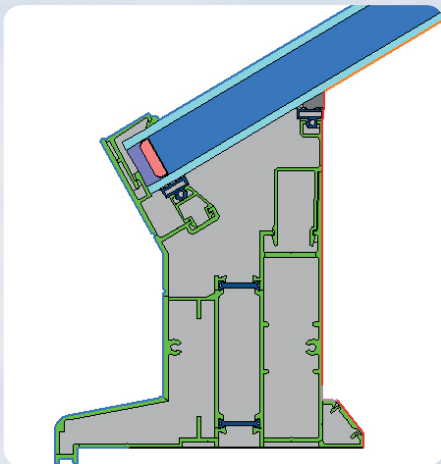
Our system is one of the most thermally efficient systems available on the market.

Both internal and external components are completely isolated from each other by means of either polyamide strip, thermal barriers, insulation and isolators, so there are no cold bridges, thus reducing temperature transfer to a bare minimum.



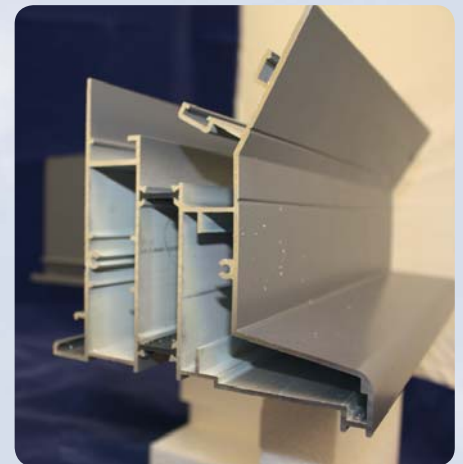
Eaves Beam

Please make sure you notice these features when comparing us to other 'so called' thermally broken roof systems that are available on the market.



Eaves Beam

Another key feature bespoke to our system is that both the glass and glazing bar system does not project outside our eaves beam, i.e. reducing a cold bridge even further.



Eaves Beam

With lower thermal U values in mind our standard glazing material is 28mm double glazed units, with a centre pane U value of 1.2 W/m². This U value can be further reduced to an outstanding 0.7 W/m² by using 50mm triple glazed option (dependant on roof style).

Designing a roof to lower U values even further is achieved by maximizing glass area (maximum glass to aluminium ratio), i.e. the least amount of glazing bars possible.

Natural choice for natural light

Double Hipped Lantern Rooflights



Double hipped Lantern rooflight with electrical vents
5.5 metres long by 3.5 metres wide with 450mm vertical windows

Adding vertical windows to create a true lantern rooflight gives a more traditional heritage look.

Vertical window height is variable and allows top-hung opening vents to be situated within the windows.

Natural choice for natural light



Double hipped Lantern rooflight with vents in vertical windows
3.8 meters long by 1.9 metres wide with 400mm vertical windows



Full Thermally Broken Roof Light System

This is a full aluminium thermally broken system to meet the ever increasing demands of both thermal efficiency low maintenance materials to combine both modern and traditional and authentic appearance of timber structures.

Materials are powder coated to a high quality finish and are available in any RAL or BS Colour of your choice. Different internal & external profile finishes are available (i.e ornate ogee, square or raked features) to suit your application.

System accommodates a multitude and different double glazed units thicknesses from 24mm – 35mm. Our D/G standard specification is 28mm thickness units Toughened Safety Glass – Low 'E' – Argon gas filled with a D/G U Value 1.2 W/m².

D/G Units are available in Clear / Bronze / Green & Blue Tints ; Self cleaning finishes (Pilkington Active) and also Solar Controlled finishes such as Cool-Lite or Sun-cool just to name a few.



REF. 10881- [686] Larry Scott

Job as shown above

Style - Double Hipped 'Lantern' Roof Light

Internal kerb size :- 3485mm x 1985mm x 30 Deg Pitch - Powder Coated RAL 9001 Cream White

Accessories :- 02 No. Electrical Top Hung Roof Vents

Full Thermally Broken Roof Light System

This is a full aluminium thermally broken system to meet the ever increasing demands of both thermal efficiency low maintenance materials to combine both modern and traditional and authentic appearance of timber structures.

Materials are powder coated to a high quality finish and are available in any RAL or BS Colour of your choice. Different internal & external profile finishes are available (i.e ornate ogee, square or raked features) to suit your application.

System accommodates a multitude and different double glazed units thicknesses from 24mm – 35mm. Our D/G standard specification is 28mm thickness units Toughened Safety Glass – Low 'E' – Argon gas filled with a D/G U Value 1.2 W/m².

D/G Units are available in Clear / Bronze / Green & Blue Tints ; Self cleaning finishes (Pilkington Active) and also Solar Controlled finishes such as Cool-Lite or Sun-cool just to name a few.



Job as shown above

REF. C4274-[754]Thorton Hall - Glasgow

Style - Double Hipped 'Lantern' Roof Light

Internal kerb size :- 5000mm x 3500mm x 30 Deg Pitch - Powder Coated **DUAL colour** Grey/Cream

Accessories :- 04 No. Electrical Top Hung Roof Vents

Full Thermally Broken Roof Light System

This is a full aluminium thermally broken system to meet the ever increasing demands of both thermal efficiency low maintenance materials to combine both modern and traditional and authentic appearance of timber structures.

Materials are powder coated to a high quality finish and are available in any RAL or BS Colour of your choice. Different internal & external profile finishes are available (i.e ornate ogee, square or raked features) to suit your application.

System accommodates a multitude and different double glazed units thicknesses from 24mm – 35mm. Our D/G standard specification is 28mm thickness units Toughened Safety Glass – Low 'E' – Argon gas filled with a D/G U Value 1.2 W/m².

D/G Units are available in Clear / Bronze / Green & Blue Tints ; Self cleaning finishes (Pilkington Active) and also Solar Controlled finishes such as Cool-Lite or Sun-cool just to name a few.



REF. Weatherspoons

Job as shown above

Style - Double Hipped 'Lantern' Roof Light

Internal kerb size :- 5000mm x 3500mm x 30 Deg Pitch - Powder Coated RAL 9910 Satin White
Accessories :- 04 No. Electrical Top Hung Roof Vents + Crestings & Finials

Full Thermally Broken Roof Light System

This is a full aluminium thermally broken system to meet the ever increasing demands of both thermal efficiency low maintenance materials to combine both modern and traditional and authentic appearance of timber structures.

Materials are powder coated to a high quality finish and are available in any RAL or BS Colour of your choice. Different internal & external profile finishes are available (i.e ornate ogee, square or raked features) to suit your application.

System accommodates a multitude and different double glazed units thicknesses from 24mm – 35mm. Our D/G standard specification is 28mm thickness units Toughened Safety Glass – Low 'E' – Argon gas filled with a D/G U Value 1.2 W/m².

D/G Units are available in Clear / Bronze / Green & Blue Tints ; Self cleaning finishes (Pilkington Active) and also Solar Controlled finishes such as Cool-Lite or Sun-cool just to name a few.



Job as shown above

REF. 14174 [977] Zella King - Berks

Style - Double Hipped 'Lantern' Roof Light

Internal kerb size :- 2547mm x 1883mm x 30 Deg Pitch - Dual Colour RAL7016 / RAL 9910 White

Accessories :- 02 No. Electrical Top Hung Roof Vents

Full Thermally Broken Roof Light System

This is a full aluminium thermally broken system to meet the ever increasing demands of both thermal efficiency low maintenance materials to combine both modern and traditional and authentic appearance of timber structures.

Materials are powder coated to a high quality finish and are available in any RAL or BS Colour of your choice. Different internal & external profile finishes are available (i.e ornate ogee, square or raked features) to suit your application.

System accommodates a multitude and different double glazed units thicknesses from 24mm – 35mm. Our D/G standard specification is 28mm thickness units Toughened Safety Glass – Low 'E' – Argon gas filled with a D/G U Value 1.2 W/m2.

D/G Units are available in Clear / Bronze / Green & Blue Tints ; Self cleaning finishes (Pilkington Active) and also Solar Controlled finishes such as Cool-Lite or Sun-cool just to name a few.



REF. 10516- [621] Lucinda

Job as shown above

Style - Double Hipped 'Lantern' Roof Light

**Internal kerb size :- 3365mm x 2135mm x 30 Deg Pitch - Powder Coated RAL 9910 Satin White
Accessories :- 02 No. Electrical Top Hung Roof Vents + Crestings & Finials**

Full Thermally Broken Roof Light System

This is a full aluminium thermally broken system to meet the ever increasing demands of both thermal efficiency low maintenance materials to combine both modern and traditional and authentic appearance of timber structures.

Materials are powder coated to a high quality finish and are available in any RAL or BS Colour of your choice. Different internal & external profile finishes are available (i.e ornate ogee, square or raked features) to suit your application.

System accommodates a multitude and different double glazed units thicknesses from 24mm – 35mm. Our D/G standard specification is 28mm thickness units Toughened Safety Glass – Low 'E' – Argon gas filled with a D/G U Value 1.2 W/m².

D/G Units are available in Clear / Bronze / Green & Blue Tints ; Self cleaning finishes (Pilkington Active) and also Solar Controlled finishes such as Cool-Lite or Sun-cool just to name a few.



Job as shown above

REF. 9986-[646] F & B Construction- Somerset

Style - Double Hipped 'Lantern' Roof Light

Internal kerb size :- 3000mm x 2000mm x 30 Deg Pitch - Powder Coated RAL 9010 Satin White
400mm Height Vertical Windows

Full Thermally Broken Roof Lantern Light System

This is a full aluminium thermally broken system to meet the ever increasing demands of both thermal efficiency low maintenance materials to combine both modern and traditional and authentic appearance of timber structures.

Materials are powder coated to a high quality finish and are available in any RAL or BS Colour of your choice. Different internal & external profile finishes are available (i.e ornate ogee, square or raked features) to suit your application.

System accommodates a multitude and different double glazed units thicknesses from 24mm – 35mm. Our D/G standard specification is 28mm thickness units (4mmx20mmx4mm) Toughened Safety Glass – Low 'E' – Argon gas filled with a D/G U Value 1.2 W/m2.

D/G Units are available in Clear / Bronze / Green & Blue Tints ; Self cleaning finishes (Clear Shield or Pro-Active) and also Heat reflective finishes such as Cool-Lite or Sun-cool just to name a few.



Architect :- Martin Rigby Associates Tel. 01207 524577

REF. 6562- [247] Rigby

Job as shown above

Style - Double Hipped '**LANTERN**' Roof Light

Internal kerb size :- 4500mm x 2300mm x 30 Deg Pitch - Powder Coated RAL 9910 Satin White
Accessories :- 450 Height Thermally Broken Vertical Windows with 4 No. Electrically Operated Top Hungs

LANTERN ROOFLIGHT SYSTEM



Full thermally broken roof light system, powder coated to RAL 9910 Satin. Glass with 28mm DG Units Low E, Argon Gas Filled Toughened Safety Glass. (DG U Vale 1.2W/2m2)
Size = 5000mm x 3500mm + 500 Vertical Windows.



ISOMETRIC VIEW



FRONT VIEW (3500mm)



3 Way Tie Bar to stop trust loads



INSTALLED MARCH 2010



Wires/Cables hidden inside glazing bar system to accommodate smoke alarm + light fittings

LANTERN ROOFLIGHT SYSTEM



INSTALLED 28th MAY 2010

Full thermally broken roof light system, powder coated to RAL 7022 Matt Grey. Glass with 28mm DG Units Low E, Argon Gas Filled Toughened Safety Glass. (DG U Vale 1.2W/2m²)
Size = 5000mm x 3500mm + 500 Vertical Windows.



14237[980] -Sanderson Contractors - PONTEFRACT

Natural choice for natural light

Roof Vents



Roof vents are purpose made to your exact requirements and can accommodate glass thicknesses from 6mm to 50mm (28mm is our standard).

Powder Coated to any standard RAL colour of your choice.

Manual, 230 Volt or 24 Volt electrical operation options available.



100T Digital control panel with rain sensor and thermostat



Electrical chain motor



Manual worm gear

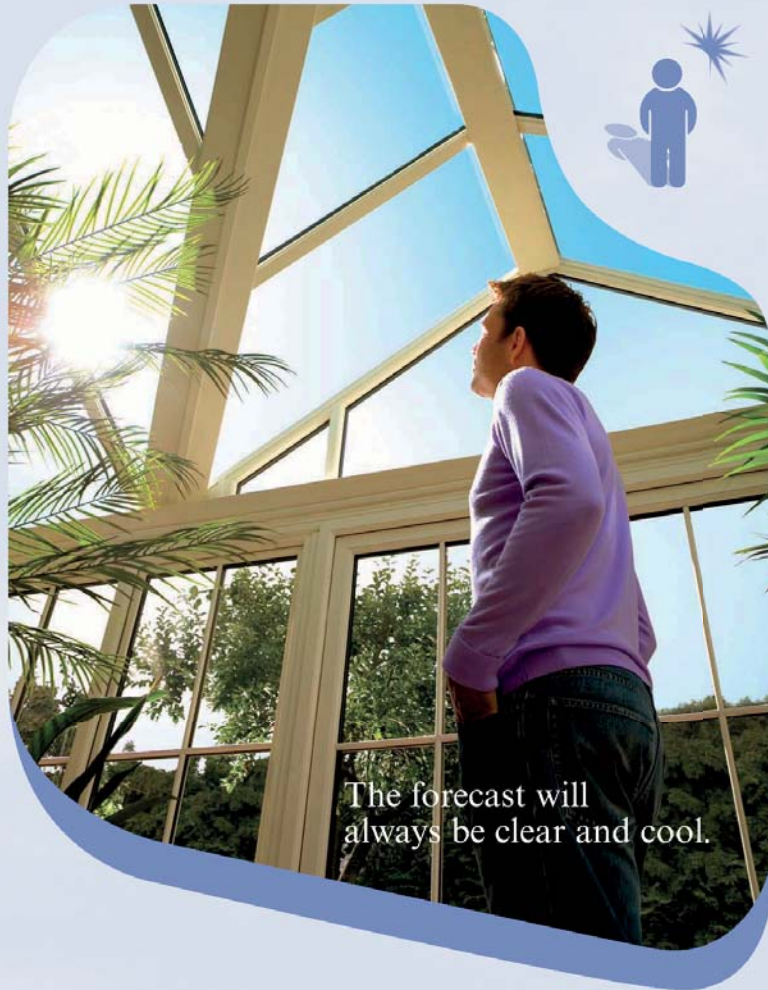


On/Off Retractive switch



Natural choice for natural light

Glass Options



The forecast will always be clear and cool.

There's an abundance of different glass specifications to choose from.

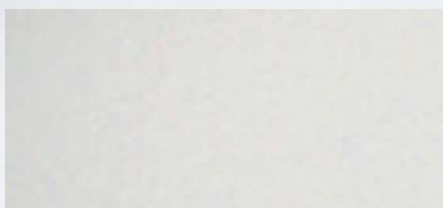
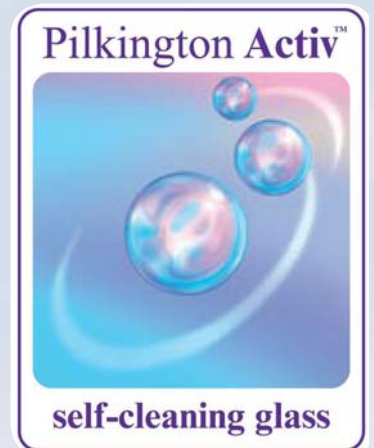
Our preferred supplier is Pilkington Glass as they are an established company and household name.

Our standard specification for glass is 28mm Clear toughened double glazed units (with a centre pane U value of 1.2 W/m).

However, we do offer a 50mm triple-glazed unit option (with a centre pane U value of 0.7 w/m²)

Glass upgrades such as Activ Self Cleaning and also Activ Blue or Neutral (Grey) Solar controlled options are available just to name a few.

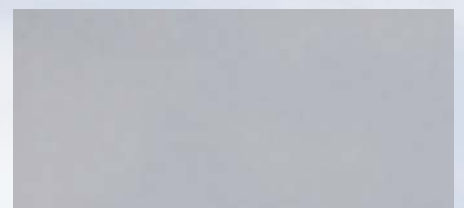
Glass samples and more technical information available on request.



Clear Activ



Solar Blue Activ

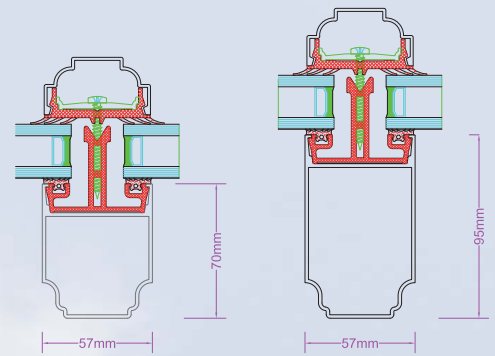
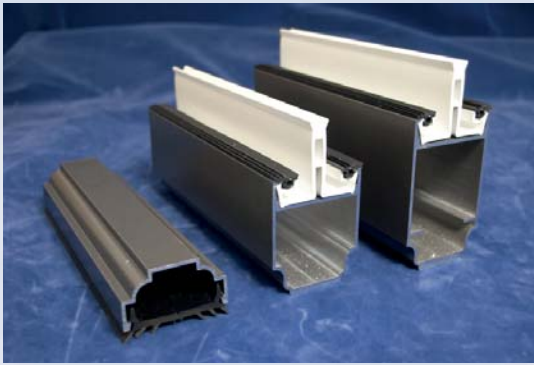


Solar Neutral Grey Activ

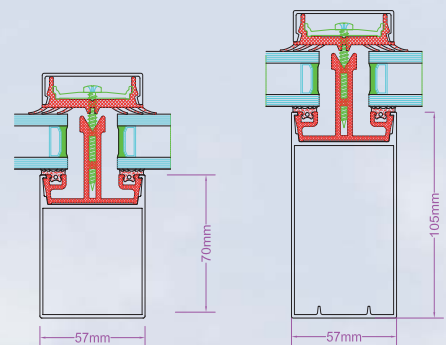
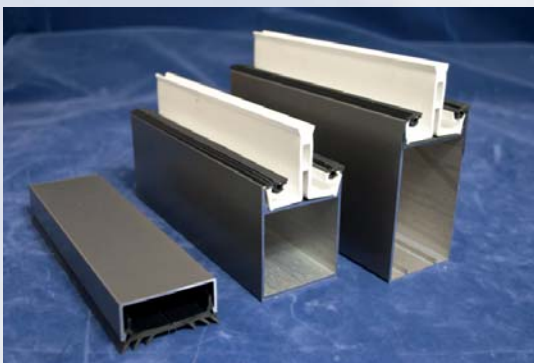
Natural choice for natural light

Profile choices

Ornate Profile



Square Profile



Samples available upon request