

# Clayworks



‘Throw open your window  
and let the scenery of clouds  
and sky enter your room.’

— YOSA BUSON

01	Natural Clay Plasters	05
02	Our Beginnings	08
03	The Spirit of Clayworks	11
04	Clayworks Finishes	12
	Classic Finishes	14
	Custom Finishes	24
	Care & Maintenance	30
	Design Detailing	31
05	Performance	33
	Sustainability	34
	Health & Wellness	35
06	Colours	36 - 37
07	Our Service	37
08	Case Studies	43
	The Cloud House, London	44
	Aesop, Duke of York Square	46
	Clay House, London	48
	Princess Project, Antwerp	50
	Walmer Yard, London	52
	Porteous Studio, Edinburgh	54
	Mercedes Me, Hong Kong	56
	All Saints, Manchester	58
	Jiva Spa, London	60
	Daylesford Organic, London	62
	Bamford Spa, London	63
	Sticks N Sushi, London	64
	Fitzroy, Fowey	66



# Natural Clay Plasters

Clayworks clay plasters are unique blends of unfired clays mixed with minerals and pigments. They provide a healthy, breathable finish for internal walls and ceilings.

Manufactured in Cornwall from abundant raw materials, they are amongst the most sustainable wall finishes available. Recyclable, compostable, reusable, and containing no toxic ingredients, VOCs (harmful chemicals released during and after application), or synthetics, Clayworks clay plasters are healthy for the planet, the building fabric, and the occupants.

As well as being 100% natural, Clayworks clay plasters are also high performance. Naturally regulating relative humidity, they allow buildings to breathe while absorbing toxins and odours. They also help to passively regulate temperature, are acoustic-absorbing and are easily repaired. Application is with the same skills and tools as other wall plasters.

Clayworks clay plasters provide a unique aesthetic – with a depth of cloudy tone and texture not found in conventional wall finishes. A seamless finish, they are ready-mixed in a wide range of mineral pigmented colours with extraordinary textures, from luxurious silkiness to coarse and rustic.



**Roslyn Road (left)**  
Architect: Magri Williams Architects  
Plaster: Classic Smooth finish in WHI-08  
Photo: Nicholas Worley

Clay plasters have been used extensively in buildings around the world for thousands of years. Our recipes and techniques are drawn from centuries of use, experience and wisdom, combined with modern geoscientific knowledge and creative flare.

The result is a sustainable, beautiful, durable and seamless wall finish that can be applied in any interior environment, including restaurants, retail spaces, offices, hotels and residential buildings.



**The Clay House (left)**  
By Simon Astridge Workshop  
See case study section, p.48

**Clayworks Samples Showroom, Cornwall (above)**  
A contemporary finish in a Demi-Rustic Ombre Fade, inspired by pottery, complemented by a hand-crafted table courtesy of Benchmark Furniture.

# Our Beginnings

Clayworks was born from a love of nature and a belief in natural, sustainable building practices. Adam Weismann and Katy Bryce, our founders, travelled the world to learn about the traditions of clay as a building material, while running a small company in Cornwall specialising in cob, wood, stone, clay and lime. Their vision was to explore the use of natural materials in architecture, particularly earth, as mediums to foster a balance in building that is healthy for the environment and the user, while beautiful in its design.

While focusing initially on integrity and performance, Adam and Katy also saw the capacity of natural materials to affect the way we experience the spaces we inhabit. Research for two books, *Building with Cob* (2006) and *Clay and Lime Finishes: Plasters, Renders and Paints* (2008), gave them the opportunity to study and learn from master plasterers around the world.

This journey led Adam and Katy to develop a particular fascination with the beauty, performance and aesthetic qualities of clay as an interior surface finish. Combining centuries-old knowledge in earth architecture with field experimentation, modern science and testing facilities, the focus became creating and delivering easy to use, ready-mix clay plaster finishes.

This culture of learning, discovery and experimentation continues to be at the heart of the Clayworks philosophy. The vision remains the same: to play a significant role in the re-imagination of clay as the interior wall finish of the future.

**‘Build your architecture from what is beneath your feet’.**

— HASSAN FATHY, AS QUOTED IN *AN ARCHITECTURE FOR THE PEOPLE*



**Yoga Studio (above)**

Adam and Katy building their yoga studio in Cornwall.

**Cob Courtyard (right)**

Mount Pleasant Eco Park, Cornwall  
Designed and built by Adam and Katy



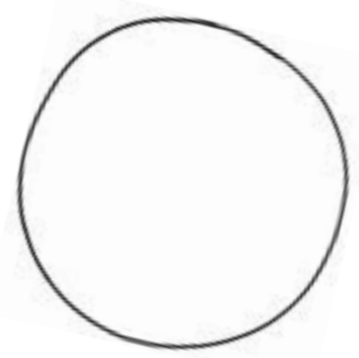


# The Spirit of Clayworks

The spirit of Clayworks is rooted in nature, respect and integrity, and embodies a set of beliefs which underpin everything we do:

- Respect for nature and the environment
- Belief in natural building practice
- Creativity and innovation
- Contribution towards the health of humanity
- Appreciation of ancient, vernacular building methods and traditions

We believe in creating a positive company. One that inspires others, and respects communities, the environment and the end user.



‘Nature provides us with a space for reflection and meditation. Natural environments encourage restoration through “soft fascination”, a term that reflects the elements that capture our attention and allow for other forms of thinking, including reflection. Fascinating elements of nature include bird songs, clouds moving across the sky, or the rustling of leaves in a light breeze. Soft fascination allows the mind to wander and encourages the exploration of our thoughts.’

— ESTHER M STERNBERG, MD. HEALING SPACES: THE SCIENCE OF PLACE AND WELLBEING

**Daylesford Organic (left)**  
Architect: Michaelis Boyd  
Plaster: Classic Smooth finish in WHI-08  
Photo: Edmund Sumner

# Clayworks Finishes

Clayworks finishes fall into two categories: Classic Finishes and Custom Finishes.

The **Classic Finishes** range in texture, tonal variation, depth and thickness. From Tonal and Smooth (2mm) to Demi Rustic (5mm) and Rustic (8-10mm).

The **Custom Finishes** show the art of the possible. An opportunity to push the materiality of clay plaster, achieving completely unique effects.

All of our natural clay plasters are suitable for most properly prepared wall or ceiling surfaces, and are available in all colours.

---

## Classic Finishes

Smooth  
Tonal  
Demi Rustic  
Rustic

---

## Custom Finishes

Rammed Earth  
Rough with the Smooth  
Arakabe  
Shuttered Concrete  
Two-Tone Anaglyptic  
Ombre Fade  
Ombre Texture  
Clay on Brick  
Tamped Earth  
Corduoy  
Raw Concrete Effect  
Polished Concrete Effect  
Custom Carved  
Moonscape  
Corrugated  
Sculpted Relief  
Horizons  
Pressed Timber

### Custom Samples (right)

Examples of custom samples in our workshop in Cornwall.





# Classic Finishes

Clayworks Classic finishes are available in all of the colours on page 30, while custom colours can be created by matching RAL and reference images. All Classic finishes can be varied with different trowel and finishing techniques to create subtly different aesthetics.

## Benchmark Furniture (below)

Designer: Benchmark Furniture

Plaster: Classic Tonal finish, in a custom colour.

Photo: Courtesy of Benchmark Furniture



## Clayworks Classic Finishes



Smooth

Tonal



Demi Rustic

Rustic

## Smooth

With a soft texture, this fine finish produces beautifully smooth textured walls. Subtle tonal and textural variations take the fear out of minimalism or large empty walls. Available in all of our colours, this finish is applied at 2mm thick.

---

### Aesthetic Opportunities

The natural mineral Mica can be added for a subtle iridescent shimmer.

---

### Case Studies

Porteous Studio p.54

Magri Williams p.4

Daylesford Organic p.62

Clay House p.48

Cloud House p.44



## Tonal

Delicate, nuanced and tactile with a silky smooth polished finish and rich tonal variation.

The raw yet highly refined and luxurious Tonal finish is imbued with warmth, elegance and sensuality, instilling a sense of emotion and movement into a space. Available in all of our colours, this finish is applied at 2mm thick.

---

### Aesthetic Opportunities

Often specified for a polished cement aesthetic, it is a non-toxic, healthy and sustainable alternative.

---

### Case Studies

Bamford Spa p.63



## Demi Rustic

Introducing a little more texture than our Smooth finish, our Demi Rustic finish is our easiest plaster to apply. It can be finished with various trowels and plastering techniques to achieve different aesthetics, from relatively smooth to more textured. Available in all of our colours, this finish is applied at 5-7mm thick.

---

### Aesthetic Opportunities

Natural materials such as straw and minerals that resemble gold fleck can be added for endless variations and interest.

---

### Case Studies

Fitzroy, Fowey, p. 66



## Rustic

Rich in character, with varying degrees of coarseness, the Clayworks Rustic finish can be applied to create a rustic yet modern space and offers the opportunity for the unique customisation of surfaces. Available in all of our colours, this finish is applied at 7-15mm thick.

---

### Aesthetic Opportunities

Natural materials such as straw, heavier aggregates and minerals that resemble gold fleck may be added. Heavier textured, coarser Rustics are available for a more earthy, monolithic feel to a space.

---

### Case Studies

Mercedes Me p.56

All Saints p.58



# Custom Finishes

Clayworks is pushing hard at the conventional boundaries of techniques and materials. We require only ideas, reference pictures or drawings to create custom samples.

With the opportunity to vary depth, colour, texture and pattern, the possibilities are endless.

## Ombre Texture (below)

Due to the incredible ability to manipulate clay plaster as a material, it is possible to create a totally unique finish for your space.



## Clayworks Custom Finishes



Rammed Earth

Rough with the Smooth

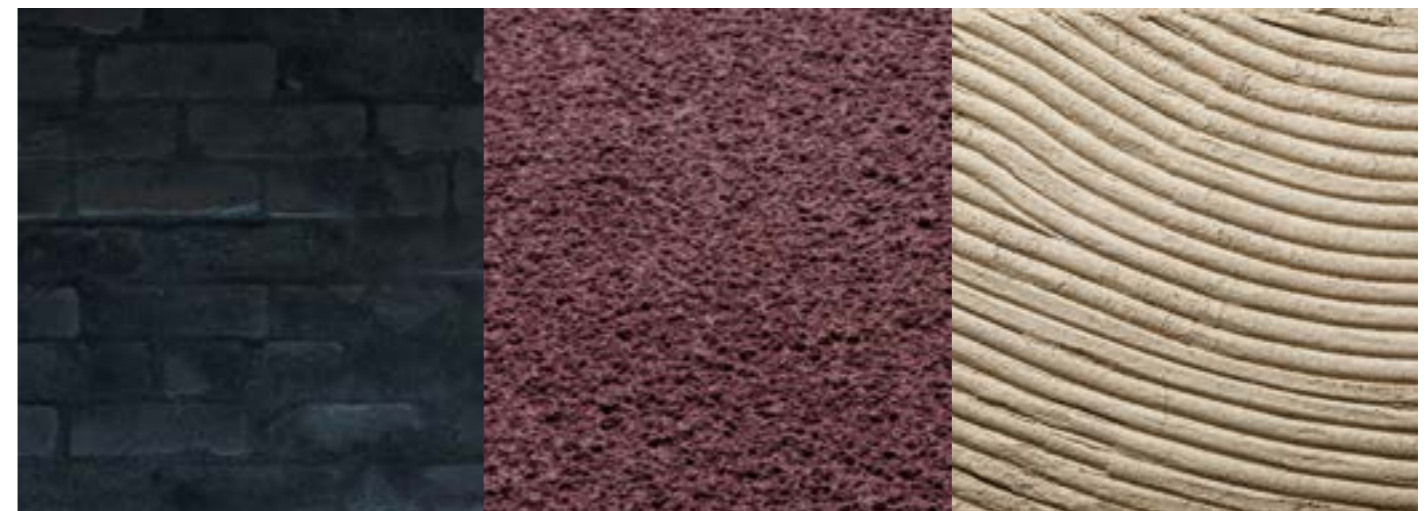
Arakabe (with straw)



Shuttered Concrete

Two-Tone Anaglyptic

Ombre Fade



Clay on Brick

Tamped Earth

Corduroy

Clayworks Custom Finishes



Raw Concrete Effect

Custom Carved

Custom Carved



Moonscape i

Moonscape ii

Corrugated



Sculpted Relief: Dunes

Horizons

Sculpted Relief: Scalloped



Princess Project (above)  
Architect: Anversa  
Plaster: Custom Rough with the Smooth finish in WHI-02  
Photo: Frederik Verduyze



## Rammed Earth

Rammed Earth finishes are pure, raw clay plaster wall finishes that can be used to create seamless and beautiful re-imaginings of one of the world's most ancient building techniques and traditions.

Made like the real thing, from 100% natural clays, minerals and sands, and coloured with natural earth pigments, this surface material is able to achieve the authenticity and feel of

monolithic rammed earth. With a depth of around 10mm it also contributes to the performance of the building fabric; softening acoustics and thermal variations, moisture control and breathability.

Rammed Earth finishes can be created in endless possibilities of colours and textures, with the ability to replicate local geological conditions or to evoke cultural connections to Muslim, Native American, African, Moorish, Persian or Chinese vernacular architecture, for example.



**Clayworks Rammed Earth (left, facing page)** Featured in the Gentle Monster store, London

**Sticks N Sushi (top left)**  
Plaster: Custom Rammed Earth finish in a single colour  
Photo: Edmund Sumner

**Gentle Monster (bottom left)**  
Photo: Guy Valentine



**Custom Rammed Earth Sample (top right)** Created by Clayworks

**Rammed Earth Wall (bottom right)**  
Photo: P-fotography



## Care & Maintenance

Clayworks clay plasters are easy to maintain and repair.

- A chipped or scratched surface can be repaired with new material at any time
- Damaged areas of plaster are inconspicuous due to their through-bodied colouring
- Mineral pigments provide UV stability, therefore will not fade in sunlight

Extra protection can be provided through the application of the Clayworks glaze (breathable and non-toxic). Glazed clay plaster surfaces can be gently cleaned with a damp sponge.



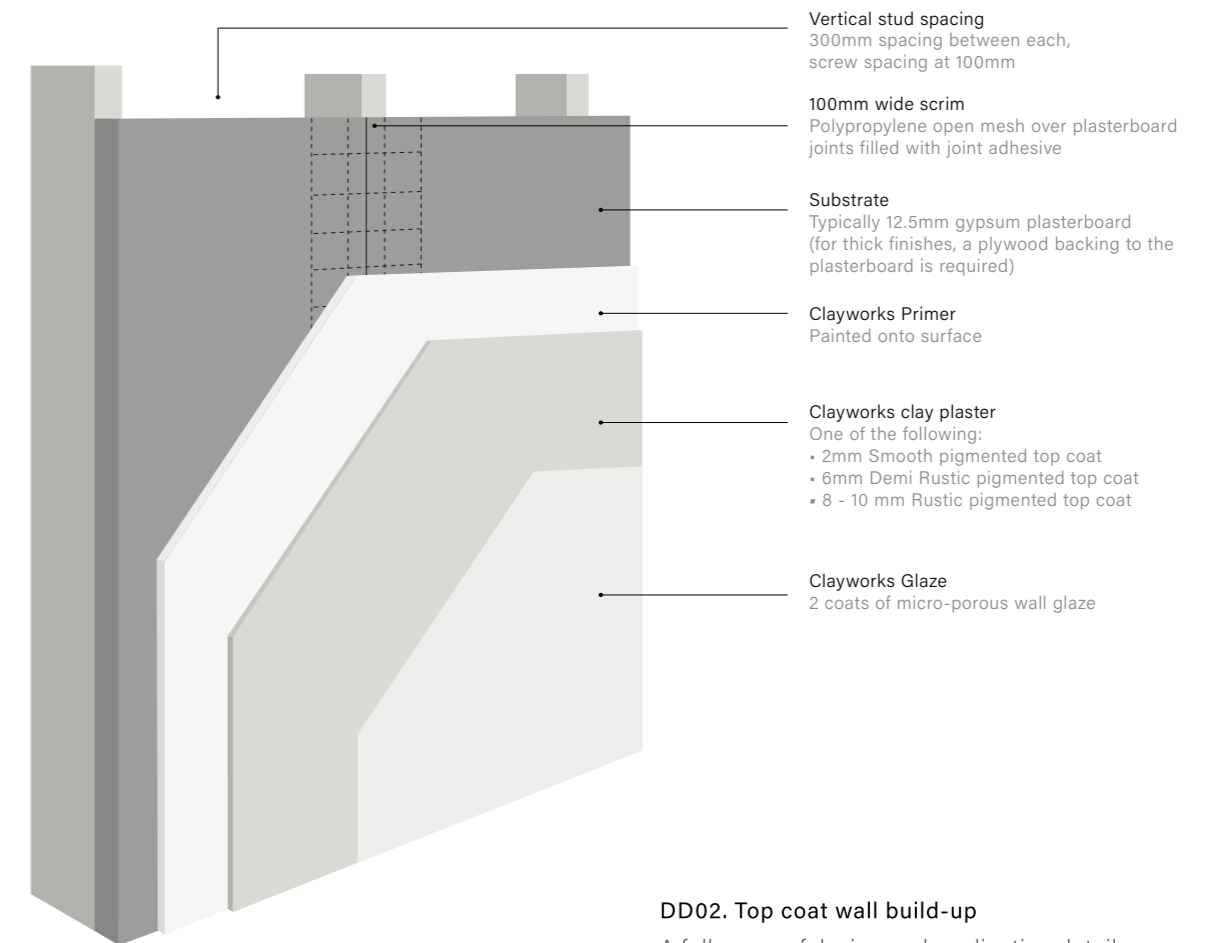
## Design Detailing

The finer details: where two materials meet, how to achieve a robust corner, what tools and strategies enhance a materials application, etc.

To answer these questions we've created a suite of design detail drawings to de-mystify the application and possibilities of our natural clay plasters. To access these resources, please refer to the downloads section on our website.

### Design Detail Drawings

- DD01. Joint In substrate
- DD02. Topcoat wall build-up
- DD03. Shadow gap internal corner
- DD04. Corner detail 1
- DD05. Corner detail 2
- DD06. Reveal trim
- DD07. Wall-ceiling junction
- DD08. Expansion joint
- DD09. Splashback junction
- DD10. Door junction shadow gap 1
- DD11. Door junction shadow gap 2
- DD12. Window reveal



### DD02. Top coat wall build-up

A full range of design and application details are available on our website: [www.clay-works.com/specifications/design-detailing](http://www.clay-works.com/specifications/design-detailing)



# Performance

Natural materials are the building technologies of the future and clay is one of nature's moisture controlling heroes. It can safely absorb and hold moisture vapour within its molecular structure, helping to prevent moisture reaching the structural material of the building. It also promotes humidity control within a building to help protect the occupants, the building fabric and the objects within it. Clay is non-flammable and softens both acoustics and thermal variations.

### Additional Attributes

- Ready-mixed for immediate application
- Through-body coloured
- Non-flammable
- Seamless surfaces negating need for expansion joints
- Easy to maintain and repair

### Suitability

- Properly prepared interior walls and ceilings
- Most building substrates (some require a suitable primer) including plasterboard and other conventional and eco-walling substrates
- Buildings which need breathable finishes and wall systems, such as historic buildings
- Areas of high humidity such as kitchens and bathrooms (not in areas in direct contact with water such as splashbacks)
- Passive house construction
- Buildings emphasising high thermal mass materials
- Insulating and breathable render carrying boards

### Roslyn Road (left)

Architect: Magri Williams Architects  
Plaster: Classic Smooth finish in WHI-08  
Photo: Nicholas Worley

# Sustainability



Sustainability is our ultimate goal. From the sourcing of raw materials, through to the day-to-day operations of the business, we seek to minimise our impact on the environment.

Our clay plasters are simply blended, requiring no water in manufacturing, no additives and very little energy. There are no waste materials and the plasters are packaged in brown paper bags. Any waste on site is compostable, and because clay plasters do not change their state when they dry, they remain as raw clay that can be returned to the ground without harm.

Our natural clay plasters thus have outstanding environmental attributes.

## Sustainability Attributes

- Very low embodied and whole life carbon: a possible 2.4kg carbon savings per meter squared compared with conventional wall build ups.
- Compostable at the end of life
- No waste materials during processing and no landfill materials produced on site. Any waste, including packaging is recyclable.
- No water used in the manufacturing
- Non-caustic
- No requirements for painting
- Passive regulator of humidity and temperature, thus requiring less mechanical ventilation
- 100% natural
- Recyclable



# Health & Wellness

As a species, we have experienced immense disengagement from the natural world over the last few hundred years. This is a shift that has caused increased exhaustion, loss of vitality and health. The use of toxic materials in our everyday environment has only compounded these issues.

The environments we inhabit play an essential role in our overall health and well-being. And so the potential of natural materials to enhance our health and well-being are numerous. Not only do natural materials present the opportunity to improve one's physiology, health and comfort – but also one's psychological health and state of mind too.

Because our clay plasters are composed of 100% natural materials, their attributes set them apart from other similar products on the market, and offer a way of enhancing our lives and the lives of others, for generations to come.

## Health Attributes

- Non-toxic
- No VOCs
- 100% natural
- Absorbs odours
- Absorbs toxins
- Acoustic absorber
- Breathable
- No off-gassing
- Helps to maintain indoor moisture levels between 40-60%, the level recommended by Allergy UK to help prevent respiratory problems and illness.
- Helps mitigate the effects of indoor ozone and formaldehydes.

\* See website for further information:  
[www.clay-works.com/specifications/sustainability](http://www.clay-works.com/specifications/sustainability)



## The Cloud House (above)

Architect: Takero Shimazaki Architects  
Plaster: Classic Smooth finish in WHI-07  
Photo: Taran Wilkhu, courtesy of The Modern House





# Our Service

Clayworks clay plasters are a celebration of colour and texture. When working with our clients we seek the best answers, not the easiest solutions. Creating new finishes is a synthesis of art and science, and Clayworks is simultaneously a creative practice, a research laboratory and a manufacturing facility.

Browse our brochure and our online galleries for inspiration, discuss your ideas with us and send reference pictures, colour and texture choices or RAL references.

### Samples

We are happy to send samples anywhere in the world, of either our standard colours and textures, or customised to your ideas.

### Materials

Clayworks clay plasters are made in Cornwall, packaged into 25KG bags and shipped directly to site, anywhere in the world.

### Applicators

Clay plasters are applied with the same tools and skills as other plasters. We recommend that the application is done by a Clayworks approved plasterer and can put you in touch with talented applicators from around the world.

‘Each material is only what we make it. If you can dream it, you can do it.’

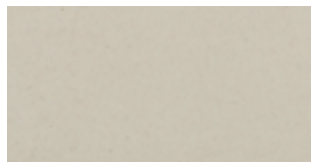
— CONSTANTIN BRĂNCUȘI

#### Colour Variation

---



WHI-07 / Smooth



WHI-07 / Demi Rustic



WHI-07 / Rustic



WHI-07 / Arakabe + Straw

**All of our natural clay plasters are available in 88 beautiful colours.**

Like with any natural material, tonal shifts within a particular colour are possible. All colours shown overleaf are in our Smooth finish. Colour may vary according to different finishes. Please see reverse for colour variation example. We also offer custom colours according to RAL, Pantone and reference images.



Clayworks

Natural Clay Plasters

Colours



‘The maker from the outset is a participant in amongst a world of active materials. These materials are what he or she has to work with and in the process of making them, he or she, joins forces with them, bringing them together or splitting them apart, synthesising and distilling, in anticipation of what might emerge.’

— TIM INGOLD, ANTHROPOLOGIST



Manhattan Loft Gardens -  
The Stratford Hotel (top)  
Architect: SPACE Copenhagen  
Plaster: Classic Tonal finish in GRY-07  
Photo: Taran Wilkhu









## Case Studies

The following projects demonstrate everything that is aesthetically unique – and possible – with clay plasters. From delicate and nuanced, silky sophistication to three-dimensional and sculptural designs, a clay plaster wall embodies craft, art, sculpture, design, and architectural sensibilities.

**Manhattan Loft Gardens -  
The Stratford Hotel (top)**

Architect: SPACE Copenhagen  
Plaster: Classic Tonal finish in GRY-07  
and Classic Smooth finish in PIN-05  
Photo: Taran Wilkhu

# The Cloud House, London

Taking its inspiration from Turner's 'Interior of an Italian Church', this London home features natural stone, concrete and clay plaster surfaces. Light floods in from the large arched windows and tactile surfaces soften the minimalist, Japanese-inspired design.

*'We agreed that the principles and materials that would bring this concept to life should follow the Japanese philosophy of wabi-sabi, which embraces authenticity, simplicity and natural design', says owner Anabel Cutler.*

---

**Plasters** Classic Smooth finish in WHI-02 & WHI-07

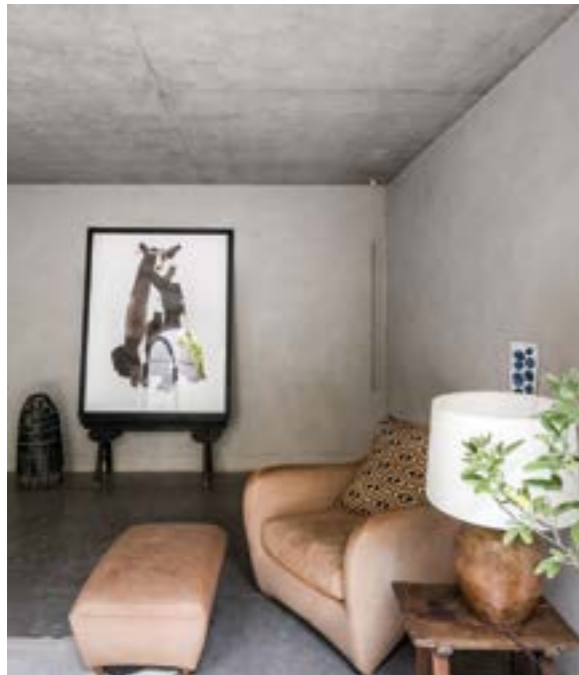
---

**Architects** Takero Shimazaki Architects

---

**Photography** Courtesy of The Modern House and Taran Wilkhu

---



## Aesop, Duke of York Square

A blend of classic and futuristic design; our coarse clay plaster contrasts with stainless steel elements and colour gradients to create a space with enormous depth and vibrancy.

*'The atmosphere is pure and honest, embodying the connection between our earth and its resources and how if used correctly can create meaningful and timeless places, no matter the scale.'* Peter Girgis, Senior Interior Architect, Snøhetta.

---

Plasters Custom Textured Ombre Fade finish

---

Architects Snøhetta

---

Photography Courtesy of Snøhetta



# Clay House, London

*'The clay adds a beautiful depth to the wall that cannot be achieved through decoration... The most beautiful part of this project is how the London skyline changes everyday and how the clay has a relationship with the clouds and hues outside.'*  
Simon Astridge.

---

**Plasters** Classic Smooth finish in WHI-08  
Moon motif in custom colour

---

**Architects** Simon Astridge

---

**Photography** Nicholas Worley

---



## Princess Project, Antwerp

A single material, permeating throughout a space to create a seamless expanse of raw beauty. An example of how pure materiality can create a beautiful simplicity, rhythm and sense of calm. And where light flows freely across this single surface, to create a dynamism and energy.

---

**Plasters** Custom Rough with the Smooth finish  
Exterior Custom Rough with the Smooth finish. (Please enquire about our new range of external finishes.)

---

**Architects** Aniversa

---

**Photography** Frederick Vercruysse

---



## Walmer Yard, London

*'The interiors of chopped straw and black clay plaster follow once again a Japanese aesthetic of roughness... beauty of the imperfect.'* Peter Salter, quoting Sōetsu Yanagi from his book *The Unknown Craftsman*.

*'The use of chopped straw and clay in a range of earth colours adopted throughout the houses, follows the patchwork quality of traditional interiors of Japanese farmhouses in which light reflection dictates the colour of the plasters. At Walmer Yard, the delicacy of the surfaces works with the grain of the poured concrete.'* Peter Salter, Walmer Yard.

---

Plasters	Classic Rustic finish with straw in custom colours
Architects	Peter Salter & Fenella Collingridge
Photography	Edmund Sumner

---



# Porteous Studio, Edinburgh

The journey from dilapidated garage to a sublime luxury retreat in the heart of Edinburgh is captivating. An example of immense attention to detail, a passion for pure, natural materials and meticulous design.

---

**Plasters** Classic Smooth finish in WHI-08

---

**Architects** Izat Arundell

---

**Photography** ZAC and ZAC, courtesy of Porteous Studio



## Mercedes Me, Hong Kong

The interplay of light and shadow on clay plasters is a wonder. It appears as if there is a warm light emanating from the plaster, while glare from artificial light is absorbed and the ultimate beauty of shadows is enhanced. The striking intersect of light and shadow on the Demi Rustic surface are accentuated too, by the unique forms created within the interior architecture.

---

**Plasters** Classic Demi Rustic finish in OLI-03 & YEL-02

---

**Architects** Vonsung

---

**Photography** Courtesy of Joseph Vonsung

---





# All Saints, Manchester

The bold, brutalist aesthetic and the effects of raw concrete never fail to stimulate architects and designers. Clayworks Raw Concrete wall finish looks like the real thing, but is a 100% natural, low carbon, compostable and non-toxic alternative.

---

Plasters Custom Raw Concrete finish

---

Architects Al-Jawad Pike

---

Photography Taran Wilkhu

---



# Jiva Spa, London

A specialist finish for helping to preserve and enhance historic brickwork in the depths of these Victorian cellars in London which have been restored and re-purposed as a luxury spa. This custom black colour brings a soft, textural and earthy patina to the walls in sympathy with the natural texture of old bricks.

---

**Plasters** Custom Clay on Brick finish in custom black. Classic Tonal finish in GRY-02

---

**Architects** Emil Eve Architects Ltd

---

**Photography** Andy Stagg

---



## Daylesford Organic, London

Delicate, nuanced, everything softened by movement and the patina of raw earth's understated and cloudy tone. Clay finishes were a natural choice for Daylesford Farm Organic Store. Smooth curves, angular surfaces and crisp edges create a soft, yet detailed surface.

---

**Plasters** Classic Smooth finish in WHI-08

---

**Architects** Michaelis Boyd

---

**Photography** Edmund Sumner



## Bamford Spa, London

A sensorial yoga studio that is calm, healing and warm is created with raw materials. Clay lets natural light diffuse and dissolve into an interior, which can be kept bare and minimal, emphasizing the strength and preciousness of the light, architecture and design.

---

**Plasters** Classic Tonal finish in WHI-08

---

**Architects** Crawford & Gray

---

**Photography** Edmund Sumner



# Sticks N Sushi, London

The surfaces of this London restaurant have a finish resembling natural earth, with a beautiful, distinctive, geological quality. Textured and craggy, the material makes the interior feel alive and almost monolithic.

---

Plasters Custom Rammed Earth finish

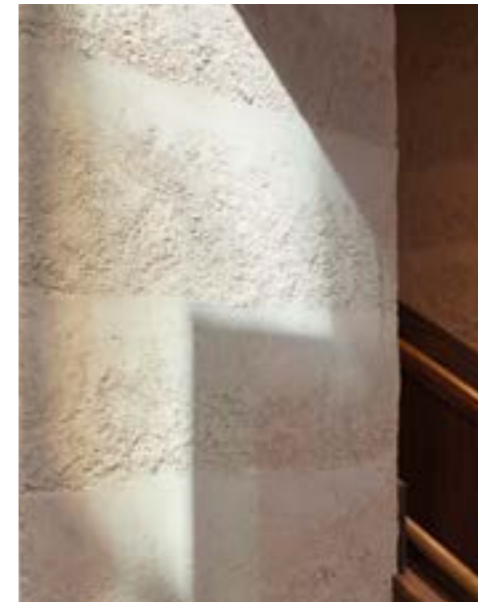
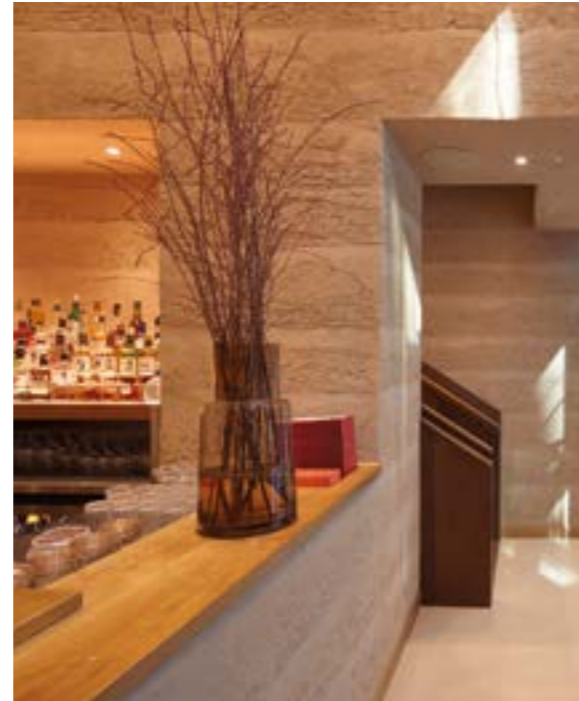
---

Architects Neri & Hu

---

Photography Edmund Sumner

---



# Fitzroy, Fowey

*'We find beauty not in the thing itself but in the patterns of shadows, the light and the darkness, that one thing against another creates'. Jun'ichirō Tanizaki, In Praise of Shadows.*

Contrasting colours and tones create a richness, depth and warmth - bringing an air of French, rustic modernism into this radiant space.

---

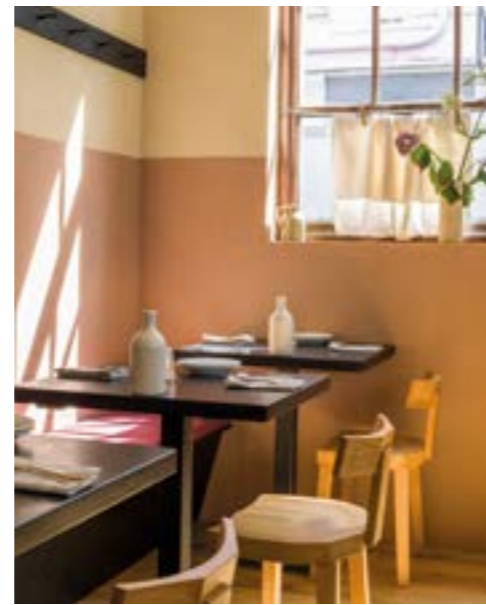
**Plasters** Classic Demi Rustic finish in custom colours

---

**Architects** Fitzroy Fowey

---

**Photography** Anthony Greenwood



**Visit us online**

clay-works.com

**Get in touch**

info@clay-works.com

+44 (0)1326 341339

**Address**

Clayworks Ltd,  
Higher Bochym Rural Workshops,  
Cury Cross Lanes,  
Helston,  
Cornwall,  
TR12 7AZ  
UK

**Find us on**

Instagram

Pinterest

@clayworksclayplasters

**Design**

Bonnie Mably

bonniemably.com

**Print**

Printed by Parklane Press on FSC® certified paper, using fully sustainable, vegetable oil-based inks, power from 100% renewable resources and waterless printing technology. Print production systems registered to ISO 14001, ISO 9001 and over 97% of waste is recycled.

**Photography**

Various, as credited within.

©2019 Clayworks Ltd.

All rights reserved.

Registered address: Lowin House,  
Tregolls Road, Truro, Cornwall, TR1 2NA

