



Introducing **S1** PGS for outdoor surface lots



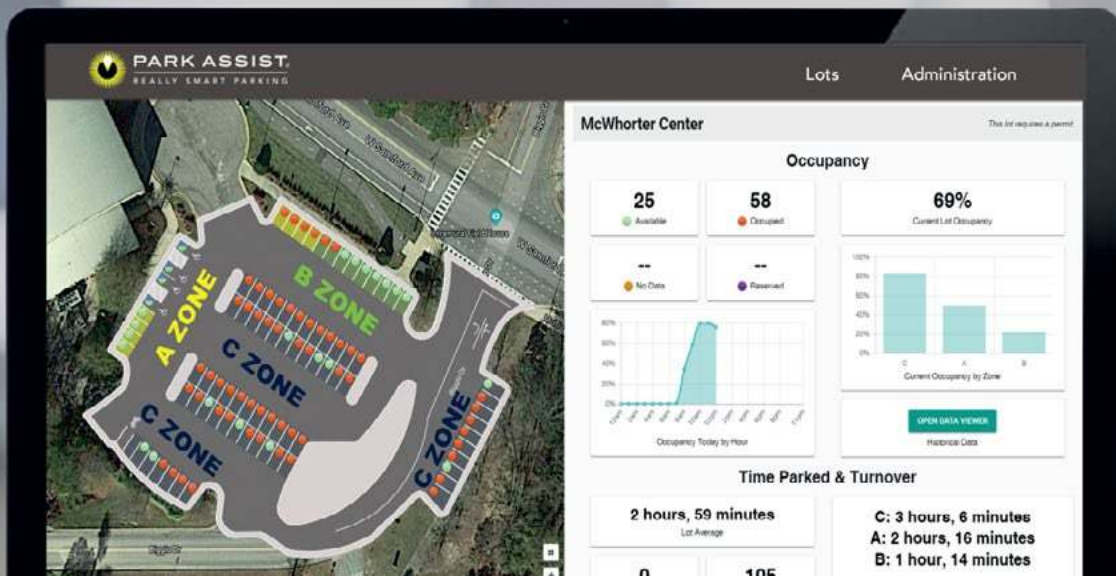
**PARK  
ASSIST**®

REALLY SMART PARKING





Unprecedented camera-based guidance for surface lots.



Up to now, parking guidance solutions for surface lots have been subpar at best.

Meet the new S1 Outdoor Surface Lot System from Park Assist®. An advanced camera based system for outdoor lots that leverages the power of our proprietary smart-sensing technology. The same field-proven technology that is already serving indoor parking facilities across 35 countries and counting. Performing at peak levels, even in the world's most challenging environments.

The logo consists of the letters 'S1' in a bold, white, sans-serif font. The '1' is slightly taller than the 'S' and is positioned to the right of the 'S'.

Outdoor Surface Lot System



---

**Simply installed.  
Powerfully intelligent.**

Whether it's used to augment an existing indoor Park Assist smart-sensor system, or integrated with your existing outdoor camera surveillance systems, the outdoor installation of an S1 system is as simple as mounting cameras for a typical surveillance system. No more digging up asphalt to install low-tech inground bay sensors that simply detect yes/no occupancy. The high-perched cameras in an S1 installation take an omniscient view to monitor multiple bays – collecting video and rich data that drives the core intelligence of the system.

The S1 system is built on our proprietary Park Assist M-Series smart-sensing technology. The first “sensor with a brain” in the industry, this game-changing technology dramatically changed the expectations of a parking guidance system (PGS) beyond the simple tracking of empty bays – by integrating core business intelligence that extends down to the parking bays.

**Providing both sitewide guidance  
and advanced security.**

Through the unique synergy of our camera based S1 smart-sensing system and customizable wayfinding signage, parkers are treated to a higher level of guidance and convenience from the moment they arrive – along with valuable followup guidance at key decision points. The result is a seamless and stress-free experience for each parker – from initial entry to an open space – which also improves overall traffic flow throughout a facility, across an entire property, and in surrounding areas.

Since each parking bay is being monitored, the S1 System can function as a sitewide video security system. Acting as a constant visual deterrent to theft, vandalism and assaults. Giving parkers an added sense of safety.

**Elevating the parker experience.  
Building loyalty and market share.**

When parkers arrive at your facility, they're typically stressed and in a hurry.



*The high-perched cameras in an S1 installation take an omniscient view to monitor multiple bays – collecting video and rich data that drives the core intelligence of the system.*

---

They want to find a desirable space quickly, and be on their way. While also hoping the departure experience will be as smooth and stress-free.

By making the parker experience frictionless from end to end, an S1 Outdoor Surface Lot System from Park Assist helps you to delight customers in ways that encourage repeat visits and build brand loyalty.

### **Real-time parking availability information onsite.**

At the street entrance and key driver-decision points, Park Assist digital wayfinding signage clearly shows the number of available spaces in each area of your car park. Upon arrival, exterior and entry wayfinding signage show vacancy counts that help parkers to choose a lot or zone. After entering, directional wayfinding signage and in-aisle pointers provide followup parking guidance. Helping parkers to make on-the-spot decisions within a chosen lot, zone or row. All of which greatly minimizes the time needed to find an open bay.

### **The innovation hub for next-gen parking.**

At Park Assist, business intelligence is more than a concept. And parking technology is about far more than guidance.

We invite you to call or email us for more information on the S1 Outdoor Surface Lot Systems– to explore our diverse array of guidance-and-beyond solutions – or to simply discuss your most imminent parking challenges and opportunities.



## **S1 FEATURES:**



**PARKING SOLUTION & SECURITY USING CAMERAS**



**PARKING GUIDANCE**



**PARKING INTELLIGENCE DASHBOARD**



**NAVIGATION TO LOT / GARAGE**



**PARKING VIOLATION ALERTS**



**CLOUD BASED SERVICE & INTEGRATION API**



*Headquarters:*

57 West 38th Street, 11th Floor  
New York, NY 10018, USA

**+1 917-793-5400**

[www.parkassist.com](http://www.parkassist.com)

<i>Sydney</i>	<i>New York</i>
<i>London</i>	<i>San Francisco</i>
<i>Amsterdam</i>	<i>Los Angeles</i>
<i>Dubai</i>	<i>Cheshire</i>
<i>Santiago</i>	<i>Fort Lauderdale</i>
<i>Panama City</i>	

*A member of the TKH Group*



As an active member of Parksmart, Park Assist has been proud to participate in the development of the **Green Garage Certification Program**: the first and only global rating system to define and recognize sustainable practices in parking structure management, programming, design and technology. The program is exclusively administered by Green Business Certification Inc (GBCI), the sole credentialing body for LEED and other key certifications.