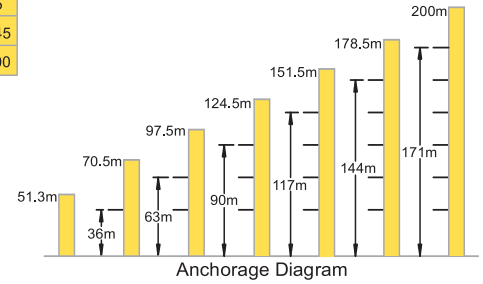


TC 652 Tower Crane

10 t

Load Capacity

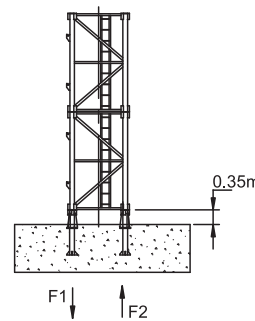
Jib Length	Radius (m)		Hoisting Load (t)																			
	3.2~15.68	18	20	22	25	28	30	32	35	38	40	42	45	48	50	52	55	58	60	63	65	
65m	10.00		8.48	7.47	6.65	5.68	4.92	4.51	4.15	3.68	3.30	3.07	2.87	2.60	2.36	2.22	2.09	1.92	1.76	1.66	1.53	1.45
	5.00								4.70	4.23	3.85	3.62	3.42	3.15	2.91	2.77	2.64	2.47	2.31	2.21	2.08	2.00
60m	10.00		9.48	8.36	7.45	6.38	5.55	5.09	4.69	4.18	3.75	3.50	3.28	2.98	2.72	2.57	2.42	2.23	2.05	1.95		
	5.00								4.73	4.30	4.05	3.83	3.53	3.27	3.12	2.97	2.78	2.60	2.50			
55m	10.00		9.04	8.02	6.70	5.99	5.50	5.07	4.53	4.07	3.81	3.57	3.25	2.97	2.81	2.58	2.45					
	5.00								4.62	4.36	4.12	3.80	3.52	3.36	3.13	3.00						
50m	10.00		9.34	8.35	7.16	6.24	5.74	5.30	4.73	4.26	3.98	3.74	3.41	3.12	2.95							
	5.00								4.81	4.53	4.29	3.96	3.67	3.50								
45m, 40m	10.00		9.55	8.22	7.19	6.61	6.11	5.48	4.95	4.64	4.36	3.95										
	5.00								4.65	4.50												



Specifications

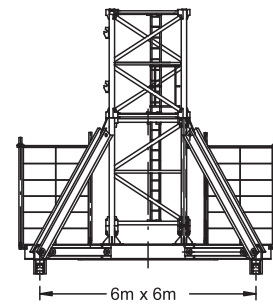
Hoisting	No of Falls	4	4
	Speed (m/min)	0 ~ 45	0 ~ 45
	Hoisting Load (t)	5.0	10.0
	Power (kw)	45	45
Slewing	Speed (rpm)	0 ~ 0.6	
	Power (kw)	2 x 5.5	
Trolley	Speed (m/min)	0 ~ 60	
	Power (kw)	5.5	
Climbing	Speed (m/min)	0.6	
	Power (kw)	11	
Main Supply	415V / 50Hz		
Electric Power	61.5kw (76.9kVA)		

Outrigger Stationary

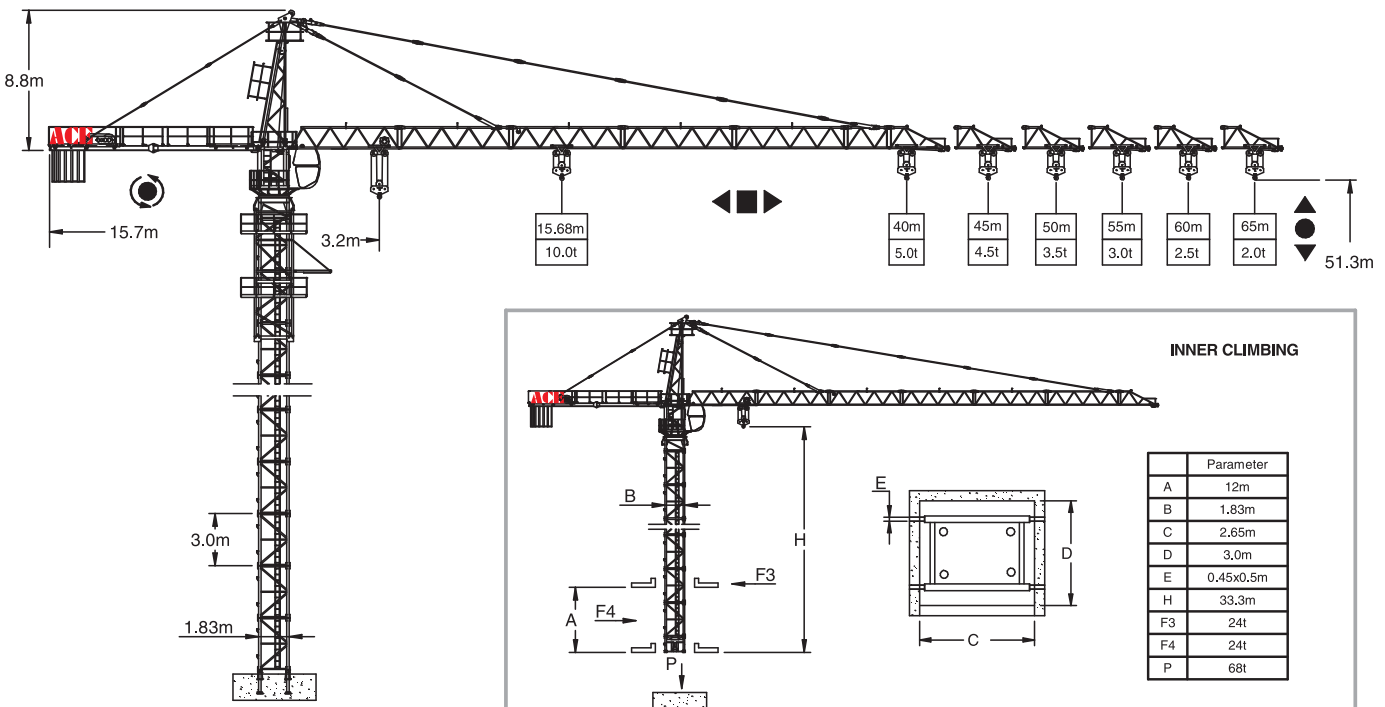


F1	◇ 112t	△ 166t
F2	◇ 66t	△ 86t

Chassis Stationary/Rail Mounted



◇	58t
---	-----



F Reaction ◇ In Service △ Out of Service ⊕ Dead weight without load and counter weights but with longest jib and free standing height.
P Vertical Load