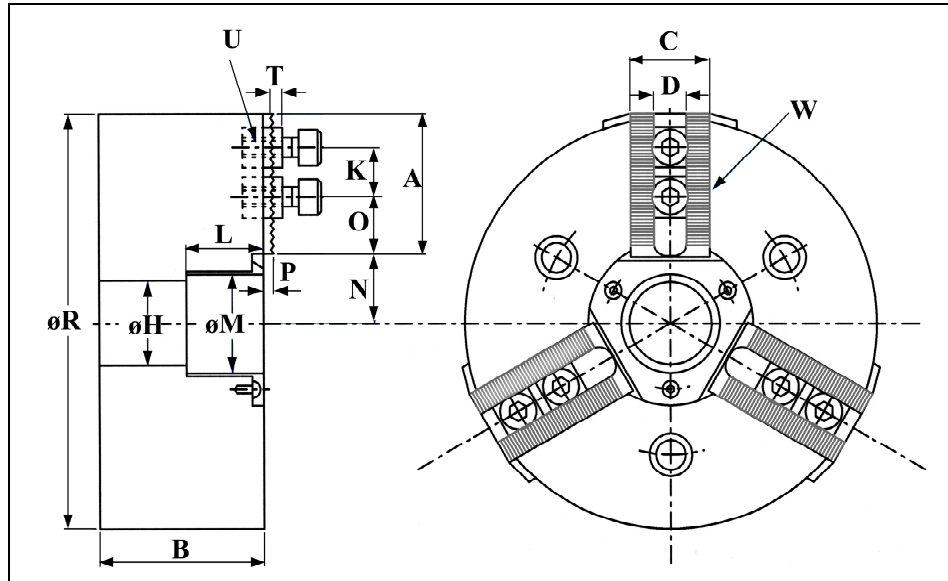


SERRATED BASE JAW CHUCK DATA SHEET

1. PLEASE FILL IN THE RELEVANT DETAILS FOR THE ITEM REQUIRED.
2. COMPLETE ALL DETAILS AT BOTTOM OF PAGE.
3. FAX OR E-MAIL COMPLETED PAGE TO CRENOL & WILSON (WORKHOLDING) LTD.



| CHUCK DATA | | |
|---|----------|--|
| CHUCK MANUFACTURER / FULL CHUCK MODEL No. / FULL CHUCK SERIAL No. | | |
| CHUCK DIAMETER | ϕR | |
| CHUCK WIDTH | B | |
| NO. OF BASE JAWS (2 JAW CHUCK, 3 JAW CHUCK OR OTHER) | | |
| ARE BASE JAW SERRATIONS ABOVE OR BELOW CHUCK FACE? | | |
| DISTANCE FROM TOP OF BASE JAW SERRATIONS TO CHUCK FACE | P | |
| ANGLE AND PITCH OF BASE JAW SERRATIONS | W | |
| BASE JAW LENGTH | A | |
| BASE JAW WIDTH | C | |
| SLOT WIDTH | D | |
| CENTRE BORE OF CHUCK | ϕH | |
| CENTRE BORE OF DUST CAP | ϕM | |

| CHUCK DATA | | |
|---|------------------|--|
| DEPTH OF DUST CAP | L | |
| ARE TEE-NUTS SINGLE (AS SHOWN) OR DOUBLE? | | |
| MINIMUM HOLE CENTRE SPACING (FOR SINGLE TEE NUT) | K _{min} | |
| MAXIMUM HOLE CENTRE SPACING (FOR SINGLE TEE NUT) | K _{max} | |
| HOLE CENTRE SPACING (FOR DOUBLE TEE NUT) | K | |
| MINIMUM DISTANCE FROM CENTRE LINE OF TEE NUT FIRST TAPPED HOLE TO FRONT OF BASE JAW | O _{min} | |
| MAXIMUM DISTANCE FROM CENTRE LINE OF TEE NUT FIRST TAPPED HOLE TO FRONT OF BASE JAW | O _{max} | |
| MINIMUM DISTANCE FROM FRONT OF BASE JAW TO CENTRE LINE OF CHUCK | N _{min} | |
| MAXIMUM DISTANCE FROM FRONT OF BASE JAW TO CENTRE LINE OF CHUCK | N _{max} | |
| HEIGHT OF TEE NUT FROM THE BASE JAW SERRATIONS | T | |
| TEE NUT THREAD DEPTH AND SIZE | U | |
| | | |

COMPANY: _____

ADDRESS: _____

POST CODE: _____

CONTACT: _____ POSITION: _____ DEPARTMENT: _____

TEL No: _____ FAX No.: _____ E-MAIL: _____

PLEASE FAX TO: 01794-830027 or E-MAIL: sales@crenolandwilson.com