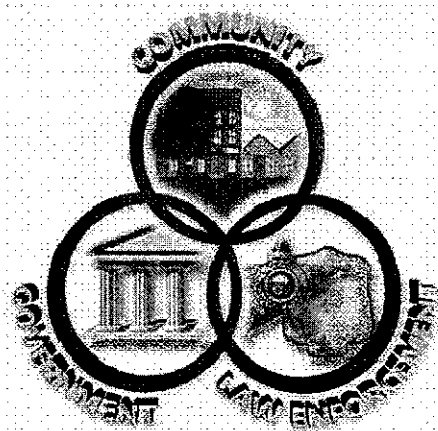


HANCOCK COUNTY SHERIFF'S OFFICE



*A COMMUNITY ORIENTED
POLICING AGENCY*

2012 ANNUAL REPORT

200 West Crawford Street

Findlay, Ohio 45840

www.hancocksheriff.org

Table of Contents

Introductory Message.....	4
Mission Statement & Guiding Principles.....	5
Enforcement.....	6-10
Transport Warrant	11
Civil Process, Support Staff.....	12
Corrections.....	13-15
Special Units—Volunteer Organizations.....	16-17
Organizational Structure.....	18
2012 Employee Awards.....	19-21
Financial Data.....	22-23
Statistical Data.....	Appendix A



**A Message From:
Michael E. Heldman
Hancock County Sheriff**



Dear Citizens of Hancock County:

Thank you for supporting the Hancock County Sheriff's Office once again this past year. The ongoing support of our efforts in the community are what truly keeps us motivated to provide the best possible service to our fellow citizens.

The year 2012 presented the normal challenges and average numbers of incidents and accidents, as well as fairly steady jail statistics. While there were some ups and downs in statistics, there were no major changes in activity.

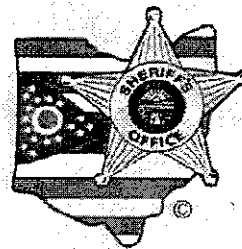
Even though the year was relatively uneventful overall, we must always keep in mind that our community is in constant need of law enforcement to monitor routine issues and watch trends in our area, state, nation and the world to help protect our community from the continual assault by criminals. Internet crimes, financial crimes and the constant flow of non-residents through our area are of constant concern for us. We are committed to continually serve our community to the best of our abilities.

Thank you for your continued support and we look forward to serving you in 2013.

Sincerely,

Michael E. Heldman

Michael E. Heldman, Sheriff

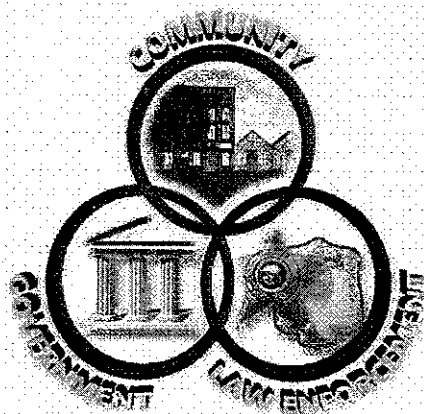


Mission Statement

The mission of the Hancock County Sheriff's Office is to provide professional services which ensure the safety and security of our citizens, maintain human rights, protect property, and preserve life, by adhering to a philosophy that allows law enforcement and community residents to work together to prevent and solve crime.

Our Guiding Principles

- We are committed to maintaining human rights, the protection of property and the preservation of life.*
- We are committed to professionalism and excellence.*
- We will ensure the safety and security of our citizens.*



Enforcement

The Hancock County Road Patrol is responsible for patrolling the roads for traffic control, handling accidents, and responding to any calls for service received by the dispatch center. They are the main point of contact for the Sheriff's Office with the public.

The Sheriff's Office made 90 arrests in 2012, towed 63 vehicles and answered 259 alarm calls. They drove a total of 597,667 miles, using 39,674 gallons of gasoline. Total fuel costs were \$129,107, averaging \$3.25 per gallon, up from \$3.16 per gallon in 2011.

Deputies wrote up 3,529 incident reports, handled 852 accidents, and issued citations with a total of 2,248 violations.

Communications is a vital part of the Road Patrol. Dispatchers received 68,150 calls during 2012. These calls involve complaints, accidents, weather questions, and many other general inquiries. Dispatchers must filter these calls to determine if action is needed, then convey the information to the proper personnel within the office to be followed up on.



Hancock County Sheriff's Office
2012 Statistics
Incidents, Accidents & Citations by Area

<u>Townships & Villages</u>	Incidents	Accidents	Citations
Allen	303	70	85
Mortimer	1	0	0
Van Buren	44	2	93
Amanda	61	21	60
Vanlue	24	1	2
Biglick	68	44	109
West Independence	0	0	0
Blanchard	66	57	141
Benton Ridge	28	3	6
Cass	106	33	73
Delaware	124	27	67
Mt. Blanchard	57	5	3
Eagle	118	52	159
Findlay	316	11	349
Jackson	93	52	161
Houcktown	2	0	0
Liberty	769	115	230
Madison	75	25	52
Arlington	143	18	69
Williamstown	5	0	0
Marion	283	94	164
Orange	111	33	89
Pleasant	75	43	38
McComb	72	5	8
Shawtown	0	0	0
Portage	57	26	44
Union	111	34	55
Mt. Cory	26	1	1
Rawson	76	0	0
Van Buren	41	11	29
Jenera	16	0	0
New Stark	0	0	0
Washington	118	58	85
Arcadia	74	11	71
Other	66	0	5
Totals	3529	852	2248

Enforcement

Sheriff's Office Contract Activity

The Sheriff's Office contracts for patrol services with the Hancock County Park District, the Village of Arlington and the Village of Van Buren. Contracts allow the entity to receive dedicated patrol hours, for which they pay an hourly fee. Below is a summary of activity for these contracts for 2012:

Park District	2,178 hours patrol 13 incidents were recorded and 17 citations issued 1 crash occurred and 1 civil paper was served
Arlington	878.5 hours patrol 54 incidents were recorded, 4 crashes occurred and 24 citations issued 21 papers were served Walkthroughs conducted—17 school, 12 bank and 225 business
Van Buren	165.2 hours patrol 5 incidents were recorded, 1 crash occurred and 41 citations issued 0 papers were served Walkthroughs conducted—18 school, 21 business Attended 3 meetings

Also of note:

The Records Clerk processed 4,898 reports, fulfilled 680 public records requests, and performed 388 local background checks for the public.

Interesting Impaired Driver Statistics:

- Drunk driving costs the United States \$132 billion a year.
- 50 to 75 percent of convicted drunk drivers continue to drive on a suspended license.
- Adults drank too much and got behind the wheel about 112 million times in 2010—that is almost 300,000 incidents of drinking and driving each day.
- In 2011, 9,878 people died in drunk driving crashes—one every 53 minutes.

Source: madd.org

Enforcement

Detective Unit

The Detective unit consists of a sergeant and four detectives, two of which are assigned to the METRICH Task Force. The Detective unit was assigned 172 cases in 2012 and cleared 119, while making 50 arrests. The unit is also responsible for juvenile assault and abuse cases as well as all cases which require more in depth investigation than is provided by the road patrol.



★ Sheriff's Line - Do not cross ★ Sheriff's Line - Do not cross ★

METRICH Drug Task Force

The HCSO Detective Unit is part of a ten county drug task force called METRICH. METRICH is one of the few de-centralized task forces in the State of Ohio promoting a Community Policing philosophy approach to task force operations. METRICH is also the largest drug task force in Ohio. The Sheriff's Office and the Findlay Police Department joined METRICH in October of 1999. METRICH is funded through the Office of Criminal Justice Services under Chief Phil Messer of the Mansfield Police Department.

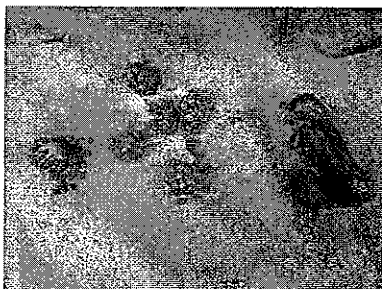
The Hancock METRICH Enforcement Unit generated 322 reports in 2012 (+8.7% from 2011). Of those reports, the unit investigated 158 narcotic cases (-4.2% from 2011), and conducted 108 field interviews (+42.1% from 2011). These investigations resulted in 163 felony charges (+15.6% from 2011) and 15 misdemeanor charged (0% change from 2011) to be requested to the Prosecutors Office for prosecution. The METRICH Unit also seized \$26,293.52 in US currency through the course of narcotics investigations, which represents a 52.9% increase from 2011.

2012 seizures included: 143.1 grams of Crack Cocaine, 479.1 grams of Cocaine, 1901.7 grams of Marijuana, 114.7 grams of Heroin, 185 Marijuana plants, 712 tablets of Oxycodone/Hydrocodone and 3 firearms.

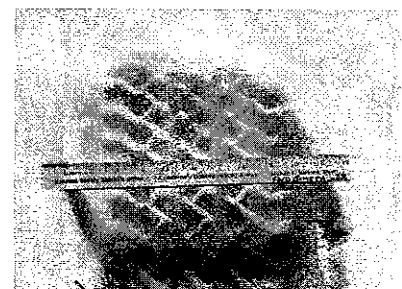
Testing for marijuana



Confiscated drug items



Measuring tire print



Enforcement

K-9 Units



K9 Becky and handler Detective Fred Smith



K9 Kevin and handler Deputy Tom Miller

Both canines remain active in the community and train weekly with surrounding agencies. This past year the canine units were used a about two hundred times throughout Northwest Ohio. They assisted the Findlay PD, Fostoria PD, McComb PD, Perrysburg Twp PD, Tiffin PD, Upper Sandusky PD, Hardin Co SO, Wood Co SO, Wyandot Co SO, and the Ohio State Highway Patrol. The canine unit assisted with the seizure of over 100 grams of marijuana, 675 grams of cocaine, 5 grams of heroin, 3,800 doses of prescription medications, and \$16,188 in currency. Street value of the seized narcotics topped \$126,000. The canine units also completed over 250 hours of additional training, in order to maintain their national and state certifications. The canine units demonstrated their abilities for several schools and civic organizations this past year.

2012 Highlights

On Wednesday, February 29, 2012, Deputy Smith and K9 Becky assisted the Ohio State Highway Patrol with a traffic stop at US 224 and CR 300. A search of the vehicle revealed a substantial amount of cocaine with a total weight of 670 grams. The street value of the cocaine was \$67,000.

On Friday, May 25, 2012, Deputy Smith and K9 Becky assisted that Ohio State Highway Patrol with a traffic stop on IR 75 Southbound at the 150 milepost. A search of the vehicle revealed a large amount of prescription medications. There were three types of prescription pills inside the grocery bag: Xanax, Oxycodone 30mg, and Lortab. A count revealed a total of 3,578 pills (479 Xanax, 1,427 Oxycodone 30mg, and 1,673 Lortab). These pills had a street value of around \$50,000.

Deputy Miller and K9 Kevin had a pair of lengthy tracks that resulted in the apprehension of individuals:

On Friday, September 7, 2012, Deputy Miller and K9 Kevin were called to the scene of a burglary in the Southwest portion of Hancock County. Deputy Miller and K9 Kevin tracked the suspect for over a mile and checked several buildings along the way. K9 Kevin located the suspect hiding inside a vehicle. The suspect was arrested and charged with burglary and receiving stolen property.

On Tuesday, December 11, 2012, Deputy Miller and K9 Kevin tracked a subject who had fled after a vehicular pursuit. The subject was located hiding in the thick brush in the woods he had fled into. Other deputies had walked within feet of the suspect and did not see him. Without K9 Kevin, this suspect would not have been located. This suspect and another were ultimately charged with receiving stolen property for the stolen metal they were transporting and for the stolen vehicle they were driving.

Transport Warrant

The Transport/Warrant unit is responsible for transporting prisoners to and from court, other facilities, and medical appointments. T/W also provides courthouse security for all county courts. Warrant tracking is also a function of this office, as is Sex Offender Registration, Concealed Carry Weapon licensing and civilian and juvenile fingerprinting.

Transport/Warrant had 744 adult escorts for court, transported 170 adults to other institutions and took 245 trips transporting 283 juveniles to other facilities in 2012, travelling 30,719 miles over 862 hours. T/W personnel spent 2,633 hours providing court security, including Common Pleas, Juvenile, Findlay Municipal Court, and the in-house courtroom for arraignments. This total also includes 2,325 hours at the West Entrance of the Courthouse. A total of 84,718 people went through security at the Courthouse in 2012.

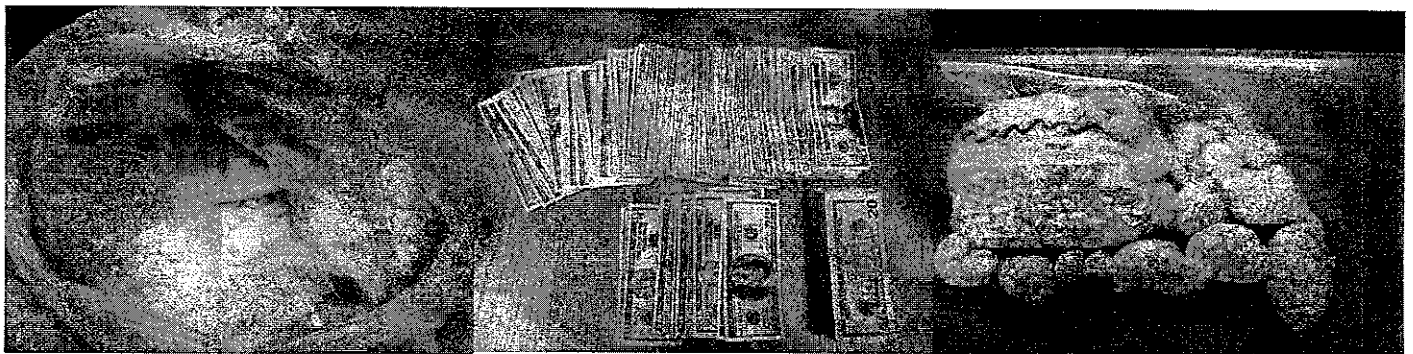
There were 311 Sex Offender registrations, of which 17 were juvenile offenders, registered with this office in 2012. The unit spent 349.5 hours registering these offenders.

The Sheriff's Office issued 555 CCW (Concealed Carry Weapon) permits (up from 321 in 2011) and performed fingerprints on 106 civilians, and 31 juveniles that were sent from Juvenile Court.

There were 937 warrants entered into the system in 2012. The unit archived 1,015 open warrants, closing out the files.



Items confiscated by the K-9 Unit in 2012



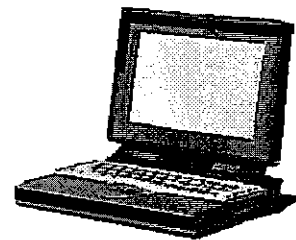
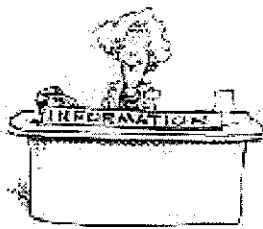
Civil Process and Support Staff

Civil Process

Civil Process is the processing of all paperwork related to civil and criminal court papers, including Sheriff's Sales, as received from the court system.

The office received 2,292 civil papers to process, and 2,020 papers were served by the Road Patrol. There were 205 CPO's (Civil Protection Orders) issued by the court and served through the Sheriff's Office

In 2012, the office received 350 Orders of Sale of real property. There were 310 appraisals performed and 211 made it through to sale without being withdrawn. There were no Orders of Execution (sale of property, i.e.: automobiles, boats, house trailers, etc.) that were taken to sale in 2012.



Support Staff

The Support Staff is comprised of 7 employees. The Corrections Clerks are responsible for all paperwork produced in the jail. They process all commissary payments and accounts, maintain and store all inmate records, maintain policy and procedure manuals and assist the Corrections staff.

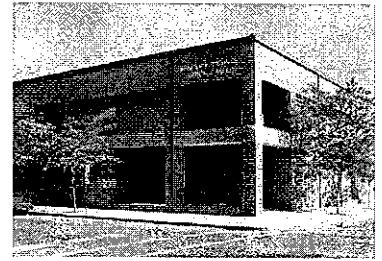
On the Enforcement level, the Support Staff is responsible for answering non-emergency phones, maintaining all records related to enforcement, expungements, records retention, processing all civil papers in and out of the office, Sheriff's Sales processing, payroll, human resource functions, maintaining fixed asset records, receipt of monies, invoicing of services, accounts payable, budgeting, and financial analysis.

The Support Staff also organizes the Annual Banquet, prepares the Annual Report, collects statistics, manages the Web page and Facebook page, and all other office functions.

Corrections

The Hancock County Justice Center is a 98 bed Adult, Male and Female, Full Service Jail.

A Full Service Jail is primarily used to detain adults for more than 120 hours, or 5 days.



2012 Quick Facts

In 2012, the jail booked 2,327 inmates and released 2,274.

- The highest daily population was 109 and the lowest daily population was 73.
- The Average Daily Population for 2012 was 92.
- There were 46 days when the population exceeded the maximum 98 beds.

The jail housed 1,760 males and 565 females. Of the inmates:

- 637 were incarcerated on felony charges
- 1,650 were misdemeanors

The jail served 97,774 meals to prisoners in 2012 for a total cost of \$167,266.

Predominate Race Incarcerated at the HCJC = Caucasian

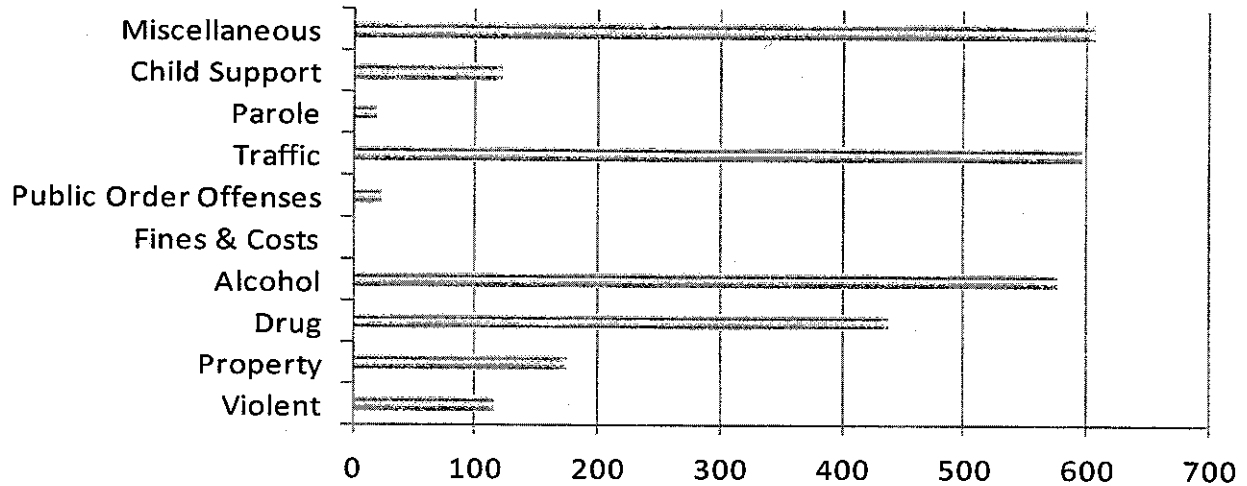
Predominate Marital Status Incarcerated at the HCJC = Single

Top Five Incarcerating Offenses:

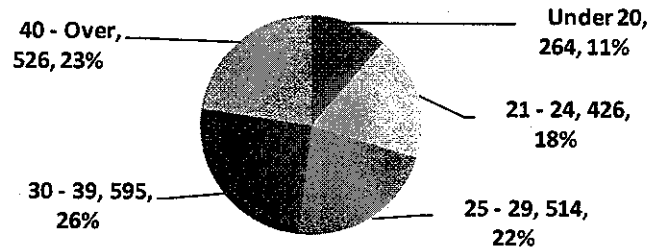
1. Alcohol Related Offenses
2. Miscellaneous (Includes forgery, petty theft, passing bad checks, misdemeanor assault, etc.—those crimes that do not fit by definition into any other collecting categories)
3. Drug Offenses
4. Traffic Offenses
5. Property Offenses

Corrections

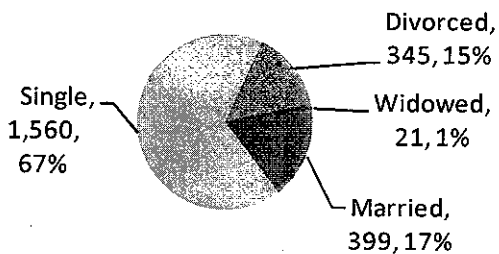
Population by Offense



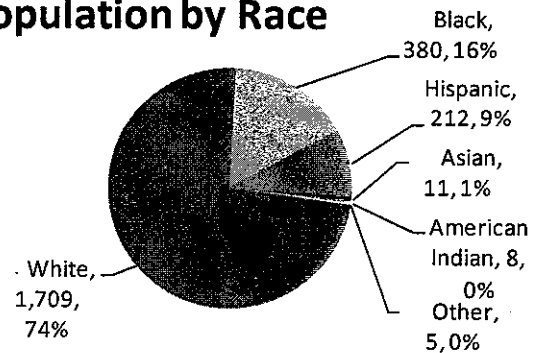
Population by Age Group



Population by Marital Status



Population by Race



Corrections

Programs

Mental Health on site counseling for inmates	803
Mental Health off site counseling for inmates	5
AA Male/Female	587
GED	81
Literacy	4
Dad's Coaching Clinic	196
Art Program	32
Domestic Violence Program	84
Bible Study Male/Female	480
Church Services, Non Denominational	424
Catholic Bible Visit—Female	16
Inmate Worker Program Male/Female	513
Inmate Worker Outside Details	200
Inmate Worker Car Wash/Wax Deputy Cruisers	451

Medical

Inmates who requested Medical Intervention	1,054
Inmates who requested Mental Health Intervention	704
Inmates seen by the facility doctor	916
Inmates seen by facility nursing staff	1,377

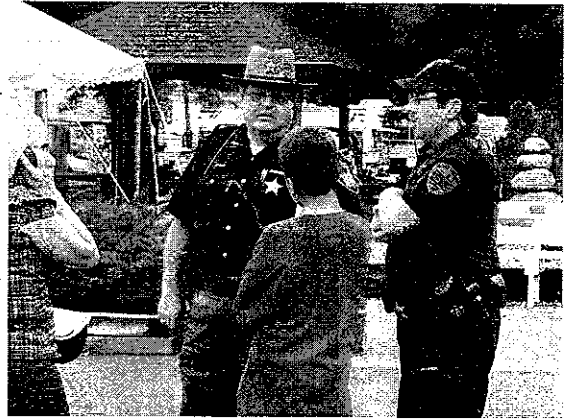
There are many more statistics tracked by the Corrections Staff.
For full statistics, see Appendix A pages 9—12.

Special Units—Volunteer Organizations

Special Deputy Organization

The Special Deputy Organization is comprised of 41 citizens who are trained to assist law enforcement agencies. This organization is responsible for security at the county schools' football and basketball games and the Hancock County Fair.

These individuals log several thousand volunteer hours, including the hours at the Hancock County Fair. They also provide services for a variety of other special events around the county each year, including the Spring and Fall Craft Shows held at the fairgrounds. Other details included the Flag City Multi-sport Event, various parades and traffic details, school dances and other functions as requested.

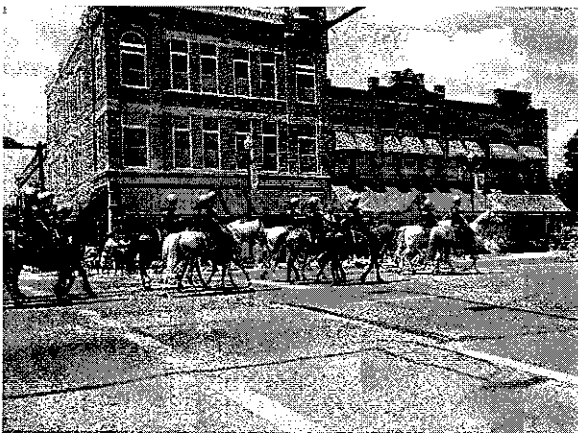


Posse

The Posse is a unit of the Special Deputy Organization and is utilized in parades and at the fair. The unit is also available for special duties which might arise where crowd control is an issue. The group also provided security presence in the Findlay Village Mall parking lot during the holiday shopping season.

Each certified posse member has had to undergo rigorous training with their horse and pass tests to determine that they and their mount are qualified to handle themselves in stressful situations. These volunteers provide their own gear and mount, and participate in all training on their own time and money.

There are currently 22 Posse members in the unit.



Special Units—Volunteer Organizations

Underwater Search & Recovery Team

This unit is specially trained in underwater search and recovery, and has been utilized many times to search the reservoir, the Blanchard River, and area ponds and streams when the need arises. There are approximately 19 members on the team, including divers, boat crew, boat captain and the land crew.

The unit undergoes regular training sessions throughout the year to strengthen their skills and teamwork.



Bike Patrol

The Bike Patrol provides services in areas where cruisers cannot be utilized. They are also utilized for special events such as parades, 5k runs, and the Balloon Fest.

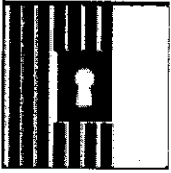
This unit must go through training to learn how to handle their bicycles in all kinds of terrain and situations. They are certified at the end of their training.

There where a lot of miles covered working the Hancock County Fair, Balloon Fest 5K Run, Special Olympics Torch Run and many other activities. The Patrol has a total of 8 bikes and 12 riders.



Hancock County Sheriff's Office

Organizational Structure



Sheriff Michael E. Heldman
 Captain Roger Treece
 Jail Administrator Lt. Ryan Kidwell



SHERIFF

Fiscal Officer (1)	Captain (1)
--------------------	-------------

HR Specialist (1)	Lieutenant/Enforcement (1)	Director of Transport/ Writ Process (1)	Lt/Jail Administrator (1)
			Lt/Jail Operations (1)

Road Sergeants (4)	Detective Sgt (1)	Corrections Sgts (5)
--------------------	-------------------	----------------------

Clerks (3)	Road Deputies (16)	Detectives (2)	Transport Deputies (5)	Clerks (2)	Corrections Officers (30)
------------	--------------------	----------------	------------------------	------------	---------------------------

Communications Officers (7)	Detectives Drug Unit (2)
-----------------------------	--------------------------

Total 85 employees, including Sheriff



2012 Employee Awards



Peer Nominated Awards

Deputy Sheriff of the Year

Barry Turner

Corrections Officer of the Year

Ben Stoner

110% Award

Jesse Sterrett

Bill Laveglia

Above & Beyond Award

Ryan Hackworth

Beth Baker

Officers of the Month

Barry Boutwell

Mike Devore

Shay Ellcessor

Lyle Harvitt

Dave Lehman

Tom Miller

Mark A. Price

Kris Otto

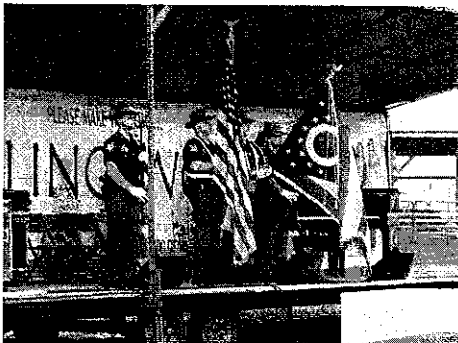
Rick Ruppright

Tim Saltzman

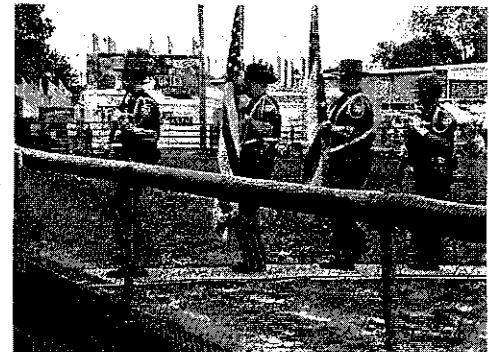
Jesse Sterrett

Brian Stozich

Barry Turner



Hancock County
Sheriff's Office
Honor Guard





2012 Employee Awards



Top Cop Awards

2012 Top Cop for OVI's	Deputy Mike Devore	23 arrests
2012 Top Cop for Drugs	Deputy Matt Brunswick	44 arrests

Congratulations to Mike and Matt for an excellent job.

No Sick Leave Used

Years of Service:

20 years Cris Bell

15 years Lyle Harvitt
 Tom Miller
 Josh Peters
 Kreg Sheets
 Becky Smith
 Marty Wolfe

10 years Jessica Leeth

5 years Kathy Chamberlain
 Jim Fawver
 Jake Powell
 Rick Stratton

T J Brooks
 Gary Fink
 Shane Heckman
 Josh Peters
 Jake Powell
 Fred Smith
 Ben Stoner
 Barry Turner
 Kathy Wefler
 Marty Wolfe

Driving Awards

5 years Tom Miller
 10 years Todd Bucher
 20 years Cris Bell
 Lyle Harvitt
 Doug McCartney



2012 Employee Awards



Buckeye State Sheriff's Association Awards

The BSSA awards are awarded based on the following criteria:

- Lifesaving Award: Awarded to all officers directly responsible for the saving of a human life.
- Certificate of Merit: Outstanding performance of duty under unusual or difficult conditions. The action need not involve exposure to physical danger but must involve the protection of life or property and involve unusual thoroughness, conscientiousness, determination and initiative.
- Commendation Award: For individual(s) who have performed efficient and valuable service to the office, either carrying out a specific task or in the performance of general duties.

BSSA Lifesaving Award:

Shay Ellcessor John Rank

BSSA Certificate of Merit:

Dan Barnt	Ryan Hackworth
Corey Hartman	Shane Heckman
Robert Keller	Jessica Leeth
Jake Powell	

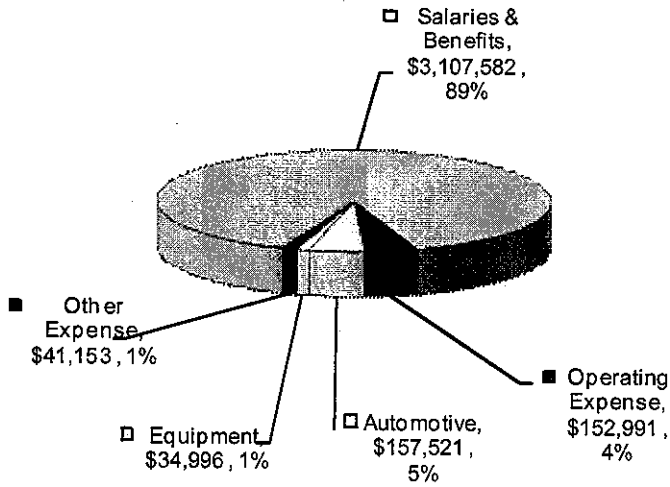
BSSA Commendation Award:

Melissa Baad	Jason Bowling	Kathy Chamberlain
Jim Fawver	Annette Foltz	Ryan Hackworth
Joe Hartman	Matt James	Kevin Keefe
Jessica Leeth	Tammy Montgomery	Tim Myers
Dakel Patterson	Mark E. Price	John Rank
Eve Rhoades	Lori Rizor	Tim Saltzman
John Shepard	Nicole Smith	Rick Stratton
Colleen Wedge	Kathy Wefler	

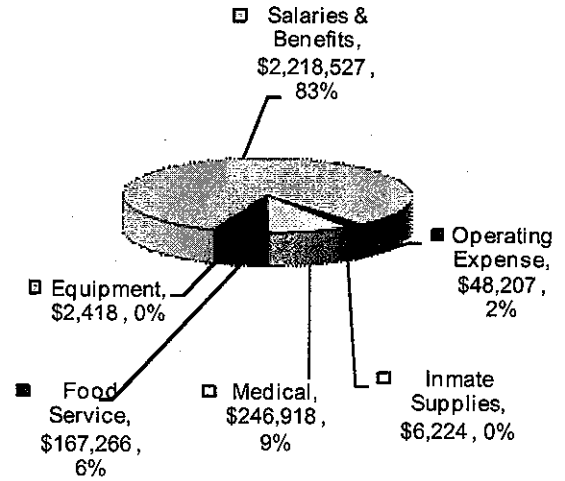
Congratulations to all award winners. Your dedication to the Sheriff's Office is very much appreciated. Without our employees, we could not "get the job done".

Financial Data

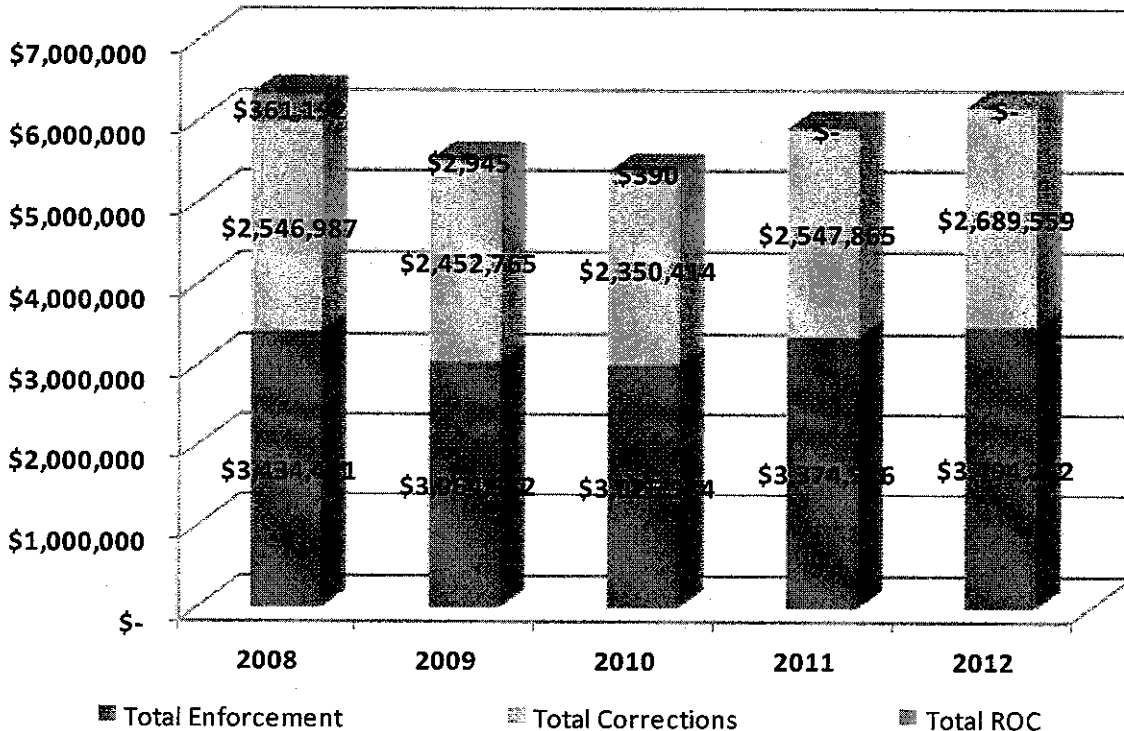
Enforcement Expenses by Category



Corrections Expenses by Category



Sheriff's Office Expenditures - 5 Year Comparison



Financial Data

Five Year Comparisons Original Appropriations and Actual Expenditures

	2008	2009	2010	2011	2012
<u>Original Appropriations</u>					
General Office	\$ 519,452.00	\$ 512,362.00	\$ 497,085.00	\$ 477,557.00	\$ 500,369.00
Transport/Warrant	\$ 454,410.00	\$ 479,605.00	\$ 386,290.00	\$ 405,442.00	\$ 431,065.00
Enforcement	\$ 2,382,305.00	\$ 2,308,130.00	\$ 2,195,213.42	\$ 2,492,907.00	\$ 2,672,755.00
Total Enforcement	\$ 3,356,167.00	\$ 3,300,097.00	\$ 3,078,588.42	\$ 3,375,906.00	\$ 3,604,189.00
Corrections	\$ 2,628,427.00	\$ 2,663,855.00	\$ 2,474,838.00	\$ 2,660,498.00	\$ 2,839,541.00
ROC	\$ 429,965.00	\$ -	\$ 1,357.67	\$ 970.00	\$ 500.00
Total General Fund	\$ 6,414,559.00	\$ 5,963,952.00	\$ 5,554,784.09	\$ 6,037,374.00	\$ 6,444,230.00
Year to Year Change		-7.02%	-6.86%	1.23%	16.01%

<u>Actual Expenditures</u>					
General Office	\$ 832,411.55	\$ 495,501.64	\$ 421,147.96	\$ 497,284.52	\$ 474,526.09
Transport/Warrant	\$ 405,874.36	\$ 444,808.84	\$ 332,731.33	\$ 356,224.75	\$ 373,957.19
Enforcement	\$ 2,196,154.61	\$ 2,124,021.72	\$ 2,273,104.65	\$ 2,549,766.40	\$ 2,626,081.70
Total Enforcement	\$ 3,434,440.52	\$ 3,064,332.20	\$ 3,026,983.94	\$ 3,403,275.67	\$ 3,474,564.98
Corrections	\$ 2,546,987.36	\$ 2,452,764.65	\$ 2,350,414.40	\$ 2,584,104.13	\$ 2,652,539.59
ROC	\$ 361,191.83	\$ 2,944.50	\$ 390.00	\$ -	\$ -
Total General Fund	\$ 6,342,619.71	\$ 5,520,041.35	\$ 5,377,788.34	\$ 5,987,379.80	\$ 6,127,104.57
Year to Year Change		-12.97%	-2.58%	8.47%	13.93%

Amount Over (Under)	\$ (71,939.29)	\$ (443,910.65)	\$ (176,995.75)	\$ (49,994.20)	\$ (317,125.43)
Original appropriations	-1.12%	-7.44%	-3.19%	-0.83%	-4.92%

**Hancock County Sheriff's Office
2012 Statistics
Enforcement - Investigative & General**

Category	Jan	Feb	Mar	Apr	May	Jun	Jul	Aug	Sep	Oct	Nov	Dec	Total
Criminal Investigations													
Assigned Cases	17	12	12	15	17	9	16	14	11	13	17	19	172
Cleared Cases	10	6	7	10	6	6	11	8	13	15	14	13	119
# of Arrests	4	5	6	4	2	5	3	2	5	7	2	5	50

Metrich - Hancock County

# of Defendants	7	6	9	7	2	25	8	8	15	4	1	9	101
New Cases	12	15	11	7	14	14	15	17	7	9	13	7	141
Closed Cases	6	5	8	4	2	25	8	8	7	6	8	13	100

Arrests

Complaint	2	1	1	2	6	2	1	2	4	2	5	1	29
Crime in Progress	1	1	3	3	2	1	3	4	4	4	2	4	32
Warrant	0	0	0	0	1	0	0	0	0	1	0	0	2
Court Summons / Citation	2	0	2	0	6	1	2	2	0	1	0	2	18
Order of Protection	1	1	0	0	0	2	0	0	0	0	0	0	5
Other	0	0	0	0	1	1	0	0	1	1	0	0	4
Total Arrests	6	3	6	5	16	7	6	8	10	9	7	7	90

Towed Vehicles

	6	3	8	3	3	11	8	6	3	5	3	4	63
--	---	---	---	---	---	----	---	---	---	---	---	---	----

Alarm Calls

Business	6	4	4	5	9	10	5	8	9	3	7	4	74
Residential	16	12	12	9	9	15	11	6	7	11	4	14	126
Schools	3	0	2	4	4	1	2	4	3	4	2	1	30
Other County Offices	0	2	3	4	2	4	4	6	0	3	1	0	29
Total Alarm Calls	25	18	21	22	24	30	22	24	19	21	14	19	259

Alarm \$ Billed

Alarm \$ Billed	\$ -	\$ -	\$ -	\$ -	\$ -	\$ 50.00	\$ 50.00	\$ -	\$ 350.00	\$ 50.00	\$ 100.00	\$ 150.00	\$ 750.00
Alarm \$ Received	\$ -	\$ -	\$ -	\$ -	\$ -	\$ 50.00	\$ -	\$ 50.00	\$ 150.00	\$ 150.00	\$ 100.00	\$ -	\$ 500.00

Patrol Car Stats

Miles Driven	47,338	44,392	51,703	51,526	59,814	51,671	49,004	51,412	51,969	51,827	45,086	41,925	597,667
Gallons of Gas	3,108.5	2,995.4	3,370.1	3,288.9	3,765.6	3,386.3	3,481.9	3,457.9	3,409.2	3,411.9	3,053.0	2,946.1	39,674.8
MPG	15.23	14.82	15.34	15.67	15.88	15.26	14.07	14.87	15.24	15.19	14.77	14.23	15.06
Total \$ Purchased	\$ 9,600.67	\$ 9,161.29	\$ 11,475.39	\$ 10,876.56	\$ 12,813.30	\$ 10,981.21	\$ 10,414.76	\$ 11,510.16	\$ 12,218.06	\$ 12,377.34	\$ 9,415.62	\$ 8,262.63	\$ 129,106.99
Price per Gallon	\$ 3.089	\$ 3.058	\$ 3.405	\$ 3.307	\$ 3.403	\$ 3.243	\$ 2.991	\$ 3.329	\$ 3.584	\$ 3.628	\$ 3.084	\$ 2.805	\$ 3.254

Hancock County Sheriff's Office
2012 Statistics
Enforcement - Incident Reports

Township & Village
Incident Reports

	Jan	Feb	Mar	Apr	May	Jun	Jul	Aug	Sep	Oct	Nov	Dec	Total
Allen	20	23	26	38	37	23	22	33	26	24	15	16	303
Mortimer	0	0	0	0	0	0	0	1	0	0	0	0	1
Van Buren	6	2	6	3	4	3	2	4	2	5	3	4	44
Amanda	2	3	4	5	3	5	12	7	4	7	3	6	61
Vanlue	0	4	2	1	2	1	4	3	1	3	0	3	24
Biglick	6	7	6	2	4	5	9	7	3	8	4	7	68
West Independence	0	0	0	0	0	0	0	0	0	0	0	0	0
Blanchard	11	5	5	3	4	4	5	8	4	11	5	1	66
Benton Ridge	1	1	0	2	5	5	4	2	2	4	0	2	28
Cass	11	7	5	9	9	7	7	8	9	8	13	13	106
Delaware	19	8	13	13	13	9	6	4	13	9	11	6	124
Mt. Blanchard	9	5	1	8	4	6	7	4	6	2	3	2	57
Eagle	11	6	13	7	10	6	11	10	16	7	10	11	118
Findlay	29	22	41	39	30	15	21	33	31	19	18	18	316
Jackson	6	6	8	9	8	10	7	9	7	10	6	7	93
Hocktown	0	0	0	0	0	0	0	0	0	0	2	0	2
Liberty	66	48	72	64	66	70	71	67	55	76	67	47	769
Madison	3	6	8	10	5	6	7	4	4	5	8	9	75
Arlington	19	16	14	10	13	9	15	6	7	13	9	12	143
Williamstown	1	0	0	2	0	1	0	0	0	0	0	1	5
Marion	22	14	23	24	16	18	25	23	33	31	26	28	283
Orange	4	9	8	11	9	9	9	10	8	15	9	10	111
Pleasant	2	3	6	6	6	13	10	7	4	6	7	5	75
McComb	4	5	5	5	10	5	4	9	13	7	4	1	72
Shawtown	0	0	0	0	0	0	0	0	0	0	0	0	0
Portage	5	4	4	6	7	5	7	2	2	8	4	3	57
Union	10	12	11	12	11	4	9	7	10	11	6	8	111
Mt. Cory	5	1	6	3	1	1	1	5	0	2	0	1	26
Rawson	4	4	15	7	8	12	4	4	3	5	6	4	76
Van Buren	4	5	2	7	2	2	1	5	4	2	3	4	41
Jenera	1	1	0	3	1	0	1	3	1	5	0	0	16
New Stark	0	0	0	0	0	0	0	0	0	0	0	0	0
Washington	10	8	11	6	10	8	15	16	6	9	8	11	118
Arcadia	7	3	8	6	4	8	13	5	3	7	3	7	74
Other	8	5	2	6	7	3	10	2	7	6	6	4	66
Totals	306	243	325	327	309	273	319	308	284	325	259	251	3529

**Hancock County Sheriff's Office
2012 Statistics
Enforcement - Accident Reports**

Category	Jan	Feb	Mar	Apr	May	Jun	Jul	Aug	Sep	Oct	Nov	Dec	Total
Township & Village													
Allen	9	4	3	4	6	3	5	6	5	8	6	11	70
Mortimer	0	0	0	0	0	0	0	0	0	0	0	0	0
Van Buren	0	0	0	0	0	0	0	0	1	0	1	0	2
Amanda	0	2	0	2	2	0	1	0	2	5	3	4	21
Vanlue	0	1	0	0	0	0	0	0	0	0	0	0	1
Biglick	4	8	1	2	5	3	3	1	1	6	4	6	44
West Independence	0	0	0	0	0	0	0	0	0	0	0	0	0
Blanchard	6	5	2	1	2	5	3	6	4	6	9	8	57
Benton Ridge	0	1	1	0	0	0	0	0	0	0	0	1	3
Cass	6	2	1	1	1	6	1	1	0	2	3	9	33
Delaware	4	1	0	2	4	3	2	1	3	5	1	1	27
Mt. Blanchard	0	0	0	0	0	0	1	0	0	0	2	2	5
Eagle	8	0	7	3	5	5	2	2	4	7	6	3	52
Findlay	0	1	1	1	1	1	0	0	1	2	1	2	11
Jackson	7	4	2	2	4	4	7	3	1	5	7	6	52
Houcktown	0	0	0	0	0	0	0	0	0	0	0	0	0
Liberty	13	11	10	4	5	3	4	12	8	12	17	16	115
Madison	4	1	1	2	1	0	0	2	1	2	3	8	25
Arlington	1	1	1	1	2	1	3	0	2	2	1	3	18
Williamstown	0	0	0	0	0	0	0	0	0	0	0	0	0
Marion	9	10	8	3	10	8	9	8	5	7	4	13	94
Orange	3	0	2	1	1	3	4	1	3	10	3	2	33
Pleasant	2	3	3	5	3	3	0	3	1	9	6	5	43
McComb	0	1	0	1	0	0	1	0	1	0	1	0	5
Shawtown	0	0	0	0	0	0	0	0	0	0	0	0	0
Portage	6	1	3	3	0	0	1	3	1	2	3	3	26
Union	3	4	2	4	5	2	1	0	2	2	4	5	34
Mt. Cory	0	0	0	0	0	0	0	0	0	1	0	0	1
Rawson	0	0	0	0	0	0	0	0	0	0	0	0	0
Van Buren	2	0	0	1	0	0	0	1	1	2	3	1	11
Jenera	0	0	0	0	0	0	0	0	0	0	0	0	0
New Stark	0	0	0	0	0	0	0	0	0	0	0	0	0
Washington	4	4	2	5	6	4	4	5	4	6	7	7	58
Arcadia	2	1	1	1	1	0	2	1	0	2	0	0	11
Totals	93	66	51	49	64	54	54	56	51	103	95	116	852

Hancock County Sheriff's Office
2012 Statistics
Enforcement - Citations

Category	Jan	Feb	Mar	Apr	May	Jun	Jul	Aug	Sep	Oct	Nov	Dec	Total
Citation Summary													
Township & Village													
Allen	7	5	4	6	15	9	11	8	4	6	2	8	85
Mortimer	0	0	0	0	0	0	0	0	0	0	0	0	0
Van Buren	8	12	12	4	8	9	5	14	12	8	0	1	93
Amanda	1	6	2	2	16	18	2	0	2	1	6	4	60
Vanlue	0	0	0	1	1	0	0	0	0	0	0	0	2
Biglick	6	9	11	11	20	6	5	14	9	8	6	4	109
West Independence	0	0	0	0	0	0	0	0	0	0	0	0	0
Blanchard	8	13	17	12	24	17	8	11	10	13	4	4	141
Benton Ridge	2	0	2	0	1	0	0	0	0	0	0	1	6
Cass	6	4	5	6	12	13	7	2	3	4	4	7	73
Delaware	5	5	7	12	10	5	5	2	9	3	4	0	67
Mt. Blanchard	0	0	0	1	0	1	1	0	0	0	0	0	3
Eagle	8	8	12	23	29	17	8	12	13	4	16	9	159
Findlay	20	24	30	30	35	39	26	43	23	31	17	31	349
Jackson	5	9	15	13	19	29	14	5	9	9	26	8	161
Houcktown	0	0	0	0	0	0	0	0	0	0	0	0	0
Liberty	14	25	27	32	22	9	23	22	18	19	11	8	230
Madison	4	2	4	4	8	7	5	2	2	5	6	3	52
Arlington	2	12	9	4	6	8	5	4	6	5	6	2	69
Williamstown	0	0	0	0	0	0	0	0	0	0	0	0	0
Marion	14	14	12	14	18	24	12	13	16	10	9	8	164
Orange	7	11	7	13	14	10	5	8	2	7	3	2	89
Pleasant	1	2	6	3	3	7	1	3	4	3	2	3	38
McComb	0	2	1	1	0	0	1	0	1	0	1	1	8
Shawtown	0	0	0	0	0	0	0	0	0	0	0	0	0
Portage	4	5	5	7	5	2	5	3	3	0	2	3	44
Union	2	9	7	4	10	6	6	1	3	3	0	4	55
Mt. Cory	0	0	0	1	0	0	0	0	0	0	0	0	1
Rawson	0	0	0	0	0	0	0	0	0	0	0	0	0
Van Buren	1	2	3	1	5	6	3	1	4	0	3	0	29
Jenera	0	0	0	0	0	0	0	0	0	0	0	0	0
New Stark	0	0	0	0	0	0	0	0	0	0	0	0	0
Washington	5	6	9	7	12	6	6	6	4	11	8	5	85
Arcadia	9	13	10	13	4	1	2	7	6	2	1	3	71
Other	1	0	1	1	1	0	0	1	0	0	0	0	5
Total Citations	140	198	218	226	298	249	166	182	163	152	137	119	2248

Hancock County Sheriff's Office
2012 Statistics
Communications

Category	Jan	Feb	Mar	Apr	May	Jun	Jul	Aug	Sep	Oct	Nov	Dec	Total
Dispatch Calls													
911 Calls Received	829	770	791	734	956	935	816	811	699	1000	757	856	9954
2424	3490	3399	4105	3867	3815	3870	4203	4404	3920	4412	3758	3872	47115
2425	502	460	663	567	467	559	695	637	569	634	476	484	6713
2426	248	272	388	285	356	332	439	419	386	450	379	414	4368
Total Dispatch	5069	4901	5947	5453	5594	5696	6153	6271	5574	6496	5370	5626	68150
Administrative													
7097 - Main line	1860	1889	2216	1997	2033	1930	2162	2214	1836	2047	1858	2265	24307
7098 - Rollover line	356	394	525	410	411	399	477	463	375	384	329	309	4832
All Transport Warrant	1279	1013	1169	983	1094	1251	1187	1226	1001	1221	1078	1061	13563
7239 - Civil Process	534	826	794	589	600	531	551	628	546	585	490	636	7310
7251 - Records	393	444	450	460	512	440	520	496	447	445	474	377	5458
Total Administrative	4422	4566	5154	4439	4650	4551	4897	5027	4205	4682	4229	4648	55470
Corrections													
7202 - Main Line	3153	3553	3617	3441	3329	3432	3377	3671	3299	3315	3286	3393	41066
7203 - Rollover Line	2426	2958	3028	2624	2856	2890	2804	3258	2651	2743	2643	2790	33671
7204 - Booking	601	745	828	837	928	1008	914	926	764	810	988	1053	10402
Total Corrections	6180	7256	7473	6902	7113	7330	7095	8055	6714	6868	6917	7236	85139
Total Calls for Agency	15671	16723	18574	16794	17357	17577	18145	19353	16493	18046	16516	17510	208759

**Hancock County Sheriff's Office
2012 Statistics
Transport Warrant**

Category	Jan	Feb	Mar	Apr	May	Jun	Jul	Aug	Sep	Oct	Nov	Dec	Total
Transports													
Adult Escorts	61	74	52	50	49	58	62	79	62	70	80	47	744
Adult Inst. Transports	17	9	14	21	12	9	19	25	10	17	12	5	170
Totl Adult Transports	19	15	16	23	23	20	19	33	17	24	14	10	233
Adult Transport Time	48.75	27.00	36.25	46.75	40.90	36.50	40.00	79.00	118.25	36.25	26.75	20.00	566.40
Mileage	2,233	1,492	1,604	1,701	1,904	1,878	1,574	2,941	1,423	1,008	1,010	1,375	19,941
Adult Transport Fees	\$ 3,368.00	\$ 1,900.00	\$ 3,505.00	\$ 2,180.00	\$ 3,366.00	\$ 2,299.00	\$ 3,328.00	\$ 5,646.00	\$ 2,250.00	\$ 2,585.00	\$ 2,183.00	\$ 977.00	\$ 33,587.00
Juvenile Transport Trips	15	9	27	16	28	14	11.5	12	17	17	16	63	245.5
# of Juveniles Transported	21	9	48	23	45	17	10	29	25	21	19	16	283
Juvenile Transport Time	23.25	19.50	41.50	23.50	54.75	23.75	12.50	19.75	23.75	24.75	22.75	16.00	305.75
Mileage	761	687	1,431	831	2,032	869	500	544	850	801	850	622	10,778
Juvenile Transport Fees	\$ 1,220.00	\$ 753.00	\$ 2,983.00	\$ 682.00	\$ 2,756.00	\$ 1,215.00	\$ 553.00	\$ 1,163.00	\$ 1,829.00	\$ 1,451.00	\$ 861.00	\$ 918.00	\$ 16,364.00
Probate Transports	1	0	0	0	0	2	4	2	0	0	0	1	10
Probate Transport time	4.00	0.00	0.00	0.00	0.00	8.00	4.50	12.50	0.00	0.00	0.00	5.00	34.00
Mileage	90	0	0	0	0	100	81	324	0	0	0	90	685
Probate Transport Fees	\$ -	\$ -	\$ -	\$ -	\$ -	\$ -	\$ -	\$ -	\$ -	\$ -	\$ -	\$ -	\$ -

Courthouse Security (Hours)

HCPC	23.25	27.45	12.50	16.50	15.00	11.00	24.50	17.25	16.50	19.00	19.00	8.25	210.20
West Entrance	189.75	194.00	202.00	195.00	215.50	195.25	178.10	219.00	176.50	199.25	182.75	177.50	2,324.60
Adult Probation	0.00	0.00	0.00	0.00	0.00	0.00	0.00	0.50	0.00	0.00	0.00	0.00	0.50
BMV/ROC/SCEA	0.00	0.00	0.00	0.00	0.00	0.00	0.00	0.00	0.00	0.00	0.00	0.00	0.00
Juvenile Court	0.00	0.75	5.75	2.00	4.25	5.50	0.50	0.50	0.00	0.00	0.00	0.00	19.25
FMC	1.75	10.50	2.00	0.00	1.00	5.00	1.75	18.50	4.75	0.00	8.75	6.25	60.25
In House Court	0.75	2.75	0.50	1.50	0.75	2.00	1.25	3.25	1.75	1.25	1.75	1.00	18.50
Total Security Hours	215.50	235.45	222.75	215.00	236.50	218.75	206.10	259.00	199.50	219.50	212.25	193.00	2,633.30
West Entrance Traffic	7,905	8,408	7,632	6,145	6,757	7,906	7,476	7,347	6,106	7,063	6,358	5,615	84,718

Warrants

Warrants Entered	87	55	70	104	69	87	70	90	92	82	58	73	937
Warrants Archived	71	115	99	71	71	92	87	106	81	86	63	73	1015
Warrant Fees	\$ 1,398.00	\$ 1,456.00	\$ 1,528.00	\$ 615.00	\$ 656.00	\$ 1,211.00	\$ 744.00	\$ 1,011.00	\$ 1,213.00	\$ 1,629.00	\$ 1,388.00	\$ 1,038.00	\$ 13,887.00
Unentered Warrants Recalled	1	5	7	2	5	8	6	4	5	24	0	8	75
Recalled Warrant Fees	\$ 120.00	\$ 480.00	\$ 560.00	\$ 400.00	\$ 300.00	\$ 400.00	\$ 561.00	\$ 460.00	\$ 320.00	\$ 300.00	\$ 250.00	\$ 365.00	\$ 4,516.00

**Hancock County Sheriff's Office
2012 Statistics
Transport Warrant**

Category	Jan	Feb	Mar	Apr	May	Jun	Jul	Aug	Sep	Oct	Nov	Dec	Total
Sex Offender Registration													
Sorn Hours	29	35	99	38	27	16	18	19	22	8.5	13	25	349.5
Adult Registrations:													
Tier I	7	11	9	7	10	7	17	22	16	9	13	27	155
Tier II	0	5	16	7	6	9	6	3	6	5	0	5	68
Tier III	12	5	10	6	7	4	1	7	2	6	7	4	71
Juvenile Registrations:													
Tier I	0	1	0	1	0	0	3	0	10	0	0	0	15
Tier II	0	0	0	0	0	0	0	1	0	0	0	0	1
Tier III	0	0	0	0	0	0	0	0	1	0	0	0	1
Total SORN Registrations	19	22	35	21	23	20	27	33	35	20	20	36	311

Concealed Carry Permits													
CCW Hours	53.5	37.5	58	50.25	45.25	34.75	32.75	26.75	46	33.25	37.5	44.5	500
CCW Permits Issued	36	52	79	70	46	38	30	25	47	2	63	67	555

Civilian Fingerprints													
Webcheck	0.75	0.5	0	1.25	2.75	2.75	2	4	4	2.25	3.5	5	28.75
Manual	0	4	9	10	10	8	11	5	3	2	7	8	77
Total Civilian Fingerprints	0.75	4.5	9	11.25	12.75	10.75	13	9	7	4.25	10.5	13	105.75

Juvenile Fingerprints	4	5	0	3	3	2	3	4	1	0	1	5	31
------------------------------	---	---	---	---	---	---	---	---	---	---	---	---	----

Extractions													
# of Extractions	0	1	1	0	0	0	0	5	0	0	0	0	7
Extradition Transport Time	0.00	1.50	3.00	0.00	0.00	0.00	0.00	12.50	0.00	0.00	0.00	0.00	17.00
Mileage	0	93	92	0	0	0	0	577	0	0	0	0	762
Extradition Fees	\$ -	\$ 3,237.00	\$ 3,054.49	\$ -	\$ -	\$ -	\$ -	\$ 682.00	\$ -	\$ -	\$ -	\$ -	\$ 6,973.49

**Hancock County Sheriff's Office
2012 Statistics
Civil & Records**

Category	Jan	Feb	Mar	Apr	May	Jun	Jul	Aug	Sep	Oct	Nov	Dec	Total
Civil Process-Sheriff's Sales													
Sheriff's Sales Received	33	27	30	22	27	30	40	30	16	39	40	16	350
Appraisals	24	26	19	7	33	20	35	32	20	34	34	26	310
Sales Withdrawn	9	1	13	3	9	6	7	9	18	18	6	21	120
Sales Conducted	15	7	30	5	18	15	16	20	26	20	17	22	211
No Bidders	0	0	2	0	1	4	1	1	3	0	0	1	13

Civil Process - Paper Service													
Chattel Sales	0	0	0	0	0	0	0	0	0	0	0	0	0
Execution Sales	0	0	0	0	0	0	0	0	0	0	0	0	0
Civil Papers Received	207	165	194	183	169	223	167	262	177	220	174	151	2292
Civil Papers Served	191	160	160	167	155	178	165	208	189	169	145	132	2020
CPO's Served	14	19	18	19	10	10	18	25	14	22	19	17	205

Records													
Reports Processed	493	371	379	456	378	376	425	433	352	515	441	279	4,898
Public Record Requests	52	73	65	50	50	72	61	62	42	57	62	34	680
Local Background Checks	55	18	53	26	29	29	32	21	28	35	36	26	388

**Hancock County Sheriff's Office
2012 Statistics
Corrections - Population**

Category	Jan	Feb	Mar	Apr	May	Jun	Jul	Aug	Sep	Oct	Nov	Dec	Total
# of Prisoners Booked	194	214	197	189	196	200	174	217	219	190	164	173	2,327
# of Prisoners Released	177	219	157	196	186	203	172	220	207	191	171	175	2,274

Fed'l Contracted Prisoners Held	0	0	0	0	0	0	0	0	0	0	0	0	0
Contracted Prisoners Held (Excluding Findlay Police Dept.)	0	0	0	3	0	0	0	0	0	0	0	0	3

Highest Population	97	106	103	98	104	104	100	103	103	93	109	104	
Lowest Population	73	88	84	74	82	88	86	88	82	80	86	83	
Average Daily Population	87	96	92	89	91	96	93	95	91	86	96	91	92
# of days Exceeded (98) Population	0	7	1	0	4	8	5	5	2	0	9	5	46

<u>Gender</u>													<u>Total</u>
Male	150	154	154	129	149	146	136	163	170	146	128	135	1,760
Female	44	60	43	59	46	54	38	54	49	44	36	38	565
Total	194	214	197	188	195	200	174	217	219	190	164	173	2,325

<u>Felons</u>													<u>Total</u>
Male	43	36	50	36	35	32	38	56	52	37	42	37	494
Female	10	19	9	13	10	10	8	21	16	13	6	8	143
Total	53	55	59	49	45	42	46	77	68	50	48	45	637

<u>Misdemeanors</u>													<u>Total</u>
Male	98	116	108	88	116	108	90	101	119	104	83	99	1,230
Female	35	38	32	45	36	45	32	36	30	31	30	30	420
Total	133	154	140	133	152	153	122	137	149	135	113	129	1,650

<u>Length of Stay</u>													<u>Total</u>
Highest	361	160	170	157	125	110	180	20	117	70	180	20	
Lowest	3	3	2	2	3	3	3	3	3	3	3	2	
Average	31	18	16	14	12	16	20	2	13	7	16	4	
DWI/OMVI	37	40	37	45	35	37	20	22	35	39	27	28	402
Highest	30	0	3	0	0	30	30	12	0	0	0	0	
Lowest	0	0	3	3	0	5	0	0	0	0	0	0	
Average	0	0	0	0	0	1	0	0	0	0	0	0	
DUS	1	2	4	2	4	5	4	4	0	2	0	2	30
Highest	30	0	30	151	0	40	25	5	3	40	30	80	
Lowest	27	4	20	5	10	0	2	2	2	5	30	0	
Average	2	0	2	5	0	1	1	0	0	3	2	3	
Domestic Violence	13	13	13	17	19	28	18	27	19	19	23	19	228

**Hancock County Sheriff's Office
2012 Statistics
Corrections - Population**

Category	Jan	Feb	Mar	Apr	May	Jun	Jul	Aug	Sep	Oct	Nov	Dec	Total
Age Groups													
Under 20	24	17	26	25	25	21	25	22	26	25	13	15	264
21 - 24	32	36	37	28	40	44	32	49	38	33	23	34	426
25 - 29	44	51	42	45	42	39	44	49	47	44	31	36	514
30 - 39	52	57	44	43	48	48	46	54	57	44	56	46	595
40 - Over	42	53	48	47	40	48	27	43	51	44	41	42	526
Race													
White	150	156	147	150	136	146	130	148	156	137	129	124	1,709
Black	23	37	33	21	37	35	29	42	45	33	24	21	380
Hispanic	21	19	16	16	20	19	12	22	15	19	10	23	212
Asian	0	2	1	0	1	0	1	1	2	0	0	3	11
American Indian	0	0	0	1	1	0	2	1	1	1	1	0	8
Other	0	0	0	0	0	0	0	3	0	0	0	2	5
Marital Status													
Married	34	49	35	40	32	24	32	39	40	22	26	26	399
Single	133	130	130	114	135	139	119	157	146	135	101	121	1,560
Divorced	26	33	31	34	27	33	21	19	32	32	32	25	345
Widowed	1	2	1	0	1	4	2	2	1	1	5	1	21
Offenses													
Violent	13	8	12	8	11	10	8	12	5	9	13	6	115
Property	16	11	20	17	8	13	11	19	18	19	8	16	176
Drug	39	46	31	29	40	32	30	43	47	38	35	29	439
Alcohol	51	54	64	56	47	55	35	29	53	53	41	40	578
Fines & Costs	0	0	0	0	1	0	0	0	0	0	0	1	2
Public Order Offenses	3	0	1	0	4	1	2	2	5	2	3	1	24
Traffic	39	60	44	46	62	44	57	52	47	60	36	50	597
Parole	3	1	1	2	1	3	2	2	1	2	1	0	19
Child Support	11	18	12	4	8	15	5	12	8	10	7	11	121
Miscellaneous	55	62	46	49	39	48	41	56	66	52	45	48	607
Total Number of Recidivisms	5	4	6	4	2	3	4	12	11	2	4	2	59
Meal Service													
# of Prisoner Meals Served	7,111	7,978	9,677	7,556	7,456	9,819	7,757	7,874	9,638	7,226	7,988	7,694	97,774

Hancock County Sheriff's Office
2012 Statistics
Corrections - Program Participation

	Jan	Feb	Mar	Apr	May	Jun	Jul	Aug	Sep	Oct	Nov	Dec	Total
Mental Health													
Alcohol/Drug Interdiction - Male	0	0	0	0	0	0	0	0	0	0	0	0	0
Alcohol/Drug Interdiction - Female	0	0	5	0	0	21	0	0	0	0	0	0	26
Emotions Management	0	0	0	0	0	0	0	0	0	0	0	0	0
# Referred for One on One Counseling	79	123	76	82	67	59	40	37	52	91	35	62	803
Off-Site Mental Health Counseling	1	0	0	0	1	0	0	3	0	0	0	0	5

General

Alcoholics Anonymous	64	72	63	25	60	50	57	34	41	36	36	49	587
GED	7	9	5	3	19	7	2	4	4	8	11	2	81
Literacy	4	0	0	0	0	0	0	0	0	0	0	0	4
Parenting Classes	0	0	0	0	0	0	0	0	0	0	0	0	0
Coaching Clinic	58	28	34	36	17	4	0	0	0	8	3	8	196
Money Management Class	0	0	0	0	0	0	0	0	0	0	0	0	0
Art Program	2	0	0	0	0	0	0	0	10	5	6	9	32
Domestic Violence Class (Males)	4	6	2	6	8	0	2	0	1	4	0	0	33
Domestic Violence Class (Females)	7	10	2	0	10	4	3	0	3	0	0	12	51

Library

Number of Visits	215	177	155	194	154	139	246	131	221	341	261	275	2,509
Number of Books Issued	339	275	326	324	254	208	317	270	322	480	405	403	3,923
Number of Bibles Issued	14	18	15	23	12	23	23	11	41	35	22	31	268
Number of Comics Issued	34	33	25	80	48	91	153	46	53	86	101	49	799

Religious

Bible Study (Males)	22	34	35	14	29	6	16	10	16	14	17	22	235
Bible Study (Females)	18	32	9	16	38	8	19	6	29	23	29	18	245
Protestant Church Services	42	54	18	49	0	29	32	38	53	25	38	46	424
Catholic Church Services	0	0	0	0	0	0	0	0	0	0	0	0	0
Female Catholic Visits	3	2	0	0	0	0	11	0	0	0	0	0	16

Hancock County Sheriff's Office
2012 Statistics
Corrections - Program Participation

	Jan	Feb	Mar	Apr	May	Jun	Jul	Aug	Sep	Oct	Nov	Dec	Total
Medical													
Receiving Screens	175	183	158	181	189	187	165	183	178	194	145	155	2,093
Medical Requests	76	87	72	78	102	87	102	122	84	74	81	89	1,054
Phone Calls to Doctor	19	13	12	7	14	11	6	2	5	7	9	7	112
Office Transports (TW)	9	8	8	12	7	5	5	8	5	12	10	10	99
Prison / Jail Transports	13	6	8	10	11	11	8	11	5	18	12	8	121
# Seen by Facility Doctor	78	96	80	72	74	80	57	84	72	74	70	79	916
# Seen by Facility Nurse	108	120	138	151	173	92	88	113	82	109	107	96	1,377
# Seen by Officer	49	47	44	47	55	58	47	60	67	71	70	81	696
Responded to Accidents	1	2	1	5	0	1	0	0	1	2	0	0	13
Number of TB Tests	46	42	52	35	46	45	42	38	39	51	57	38	531
TB Tested Positive	0	0	0	0	0	0	0	0	0	0	0	0	0
Daily Count Diabetics	57	15	24	28	60	38	20	28	48	58	42	60	478
Number of Lab Tests	2	3	1	6	8	3	3	2	0	1	5	2	36
Mental Health Requests	50	55	77	84	62	42	40	75	52	44	66	57	704
Prescriber Called	10	3	10	6	5	8	7	14	11	3	17	12	106
# of Prescriptions Filled	5	1	4	1	1	0	3	0	0	1	0	0	16
# of Psychotropic Prescriptions Filled	10	0	7	2	3	0	0	0	0	0	0	0	22
Avg# Inmates Receiving Psychotropic Meds	25	24	22	20	24	23	23	25	21	24	25	21	277
# Inmates on Special Diets	63	30	48	52	97	57	41	61	48	67	77	67	708
# Off-Site Long Term Mental Health Trtmt	1	0	0	0	0	0	0	0	1	1	0	2	5
(Northcoast Behavioral Center - Toledo)													
# Off-Site Medical Care	4	5	5	10	4	2	1	6	5	8	7	5	62
(ER, Doctor's Office, Dentist)													

Inmate Worker Program

# of Male Prisoners	46	34	24	33	20	23	34	23	25	24	31	34	351
# of Female Prisoners	15	1	9	10	10	9	17	15	17	18	23	18	162
# of Outside Work Details	91	81	4	0	0	0	1	6	7	2	5	3	200
# of Car Washes/Waxes Completed	41	36	32	60	56	33	42	29	28	25	36	33	451

**Hancock County Sheriff's Office
2012 Statistics
Financial Summary**

Category	Jan	Feb	Mar	Apr	May	Jun	Jul	Aug	Sep	Oct	Nov	Dec	Total
General Fund Receipts													
Fees & Fines Collected	\$ 8,751.60	\$ 9,411.95	\$ 10,471.27	\$ 13,224.32	\$ 11,256.65	\$ 10,965.68	\$ 8,781.73	\$ 12,162.93	\$ 10,502.27	\$ 11,874.88	\$ 8,115.69	\$ 13,814.24	\$ 129,133.21
Security Contracts - General Fund	\$ 2,753.89	\$ 3,877.41	\$ 2,703.21	\$ 2,782.35	\$ 1,631.63	\$ 4,997.93	\$ 1,511.40	\$ 3,950.26	\$ 412.20	\$ 4,869.12	\$ 2,808.12	\$ 2,722.25	\$ 35,019.77
Prisoner Housing	\$ 43,384.62	\$ 55,142.87	\$ 57,367.48	\$ -	\$ 57,352.97	\$ 109,516.09	\$ 60,472.50	\$ 58,321.54	\$ -	\$ 59,948.02	\$ 105,707.90	\$ -	\$ 607,213.99
Resident Housing	\$ 25.00	\$ 30.00	\$ 25.00	\$ 25.00	\$ 25.00	\$ 25.00	\$ -	\$ 25.00	\$ 25.00	\$ -	\$ 25.00	\$ -	\$ 230.00
Other	\$ 2,788.29	\$ 1,008.75	\$ 10,599.06	\$ 3,622.59	\$ 6,524.31	\$ 731.05	\$ 16,882.14	\$ 3,790.26	\$ 7,277.25	\$ 3,382.36	\$ 3,384.28	\$ 7,335.28	\$ 67,325.62
Total to General Fund	\$ 57,703.40	\$ 69,470.98	\$ 81,166.02	\$ 19,654.26	\$ 76,780.56	\$ 126,235.75	\$ 87,647.77	\$ 78,249.99	\$ 18,216.72	\$ 79,874.38	\$ 120,049.99	\$ 23,871.77	\$ 838,922.59
Grant Funds Received	\$ 3,988.77	\$ 1,684.08	\$ -	\$ 1,293.44	\$ 1,749.35	\$ -	\$ 4,120.39	\$ 4,756.82	\$ 1,510.54	\$ 39,492.62	\$ 621.24	\$ -	\$ 59,217.25
Security Contracts - Special Fund	\$ 6,758.00	\$ 5,406.40	\$ 6,749.55	\$ 5,496.00	\$ 5,496.00	\$ 6,870.00	\$ 5,496.00	\$ 6,801.30	\$ 5,444.48	\$ 5,496.00	\$ 5,496.00	\$ -	\$ 65,509.73
Special Fund Receipts	\$ 15,529.33	\$ 15,598.85	\$ 16,167.35	\$ 13,059.72	\$ 26,246.21	\$ 6,199.20	\$ 12,855.10	\$ 11,046.23	\$ 10,766.76	\$ 9,881.65	\$ 14,936.20	\$ 11,439.65	\$ 163,526.25
Receipts	\$ 83,979.50	\$ 92,160.31	\$ 104,082.92	\$ 39,503.42	\$ 110,282.12	\$ 139,304.95	\$ 110,119.26	\$ 100,854.34	\$ 35,938.50	\$ 134,544.65	\$ 141,094.43	\$ 35,311.42	\$ 1,127,175.92
General Fund Expenditures													
General Office	\$ 71,681.45	\$ 29,574.13	\$ 44,024.92	\$ 36,369.94	\$ 36,639.28	\$ 31,177.48	\$ 41,017.47	\$ 46,645.08	\$ 40,365.53	\$ 39,829.02	\$ 33,724.54	\$ 28,690.91	\$ 479,739.75
Enforcement	\$ 251,753.32	\$ 190,994.00	\$ 306,139.20	\$ 216,637.36	\$ 215,475.67	\$ 212,945.46	\$ 202,793.47	\$ 252,570.98	\$ 193,810.21	\$ 197,913.02	\$ 201,144.92	\$ 198,152.74	\$ 2,640,330.35
Transport Warrant	\$ 26,379.18	\$ 24,691.17	\$ 31,761.07	\$ 36,501.70	\$ 30,353.84	\$ 28,643.34	\$ 27,635.04	\$ 35,564.41	\$ 33,205.79	\$ 33,326.17	\$ 33,143.66	\$ 32,891.82	\$ 374,067.19
Total Enforcement	\$ 349,813.95	\$ 245,229.30	\$ 381,925.19	\$ 289,509.00	\$ 282,468.79	\$ 272,766.28	\$ 271,445.98	\$ 334,780.47	\$ 267,381.53	\$ 271,068.21	\$ 268,013.12	\$ 259,735.47	\$ 3,494,137.29
Corrections	\$ 231,619.94	\$ 212,038.24	\$ 290,074.90	\$ 212,192.65	\$ 240,656.72	\$ 195,512.79	\$ 210,607.76	\$ 289,443.96	\$ 173,162.65	\$ 237,161.73	\$ 211,654.52	\$ 184,051.73	\$ 2,688,177.59
ROC	\$ -	\$ -	\$ -	\$ -	\$ -	\$ -	\$ -	\$ -	\$ -	\$ -	\$ -	\$ -	\$ -
Total Gen'l Fund Expenditures	\$ 581,433.89	\$ 457,267.54	\$ 672,000.09	\$ 501,701.65	\$ 523,125.51	\$ 468,279.07	\$ 482,053.74	\$ 624,224.43	\$ 440,544.18	\$ 508,229.94	\$ 479,667.64	\$ 443,787.20	\$ 6,182,314.88