



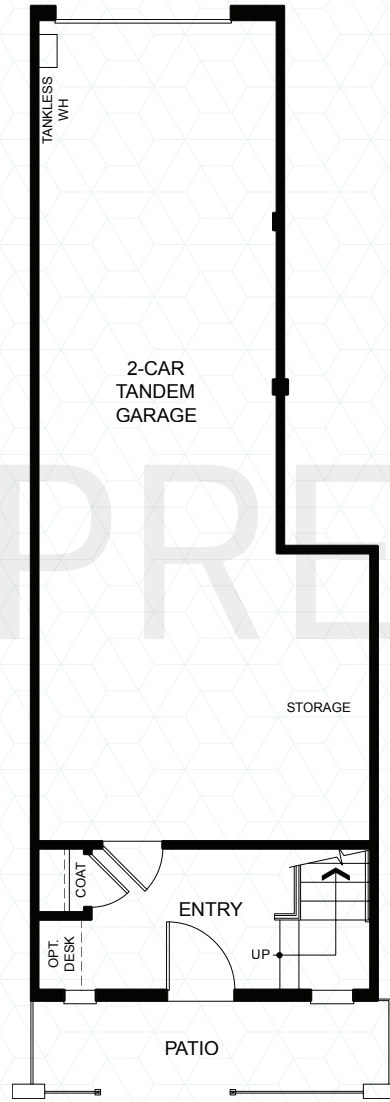
**CATALINA**

# Plan 1

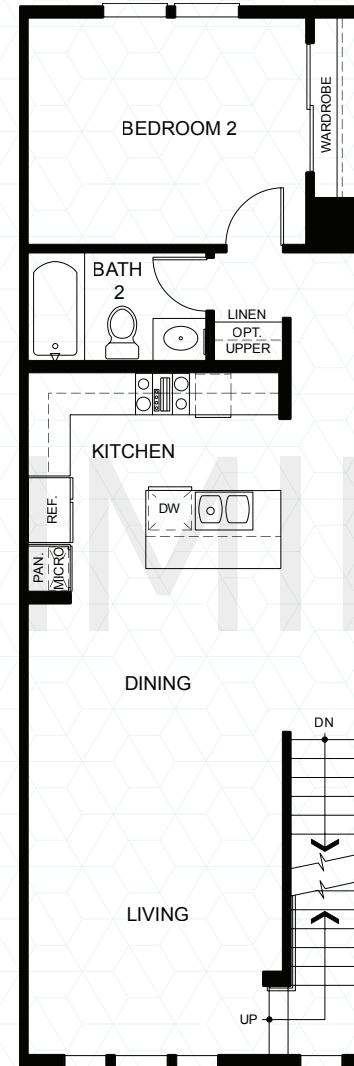
Approx. 1,626 Sq. Ft.

3 Beds

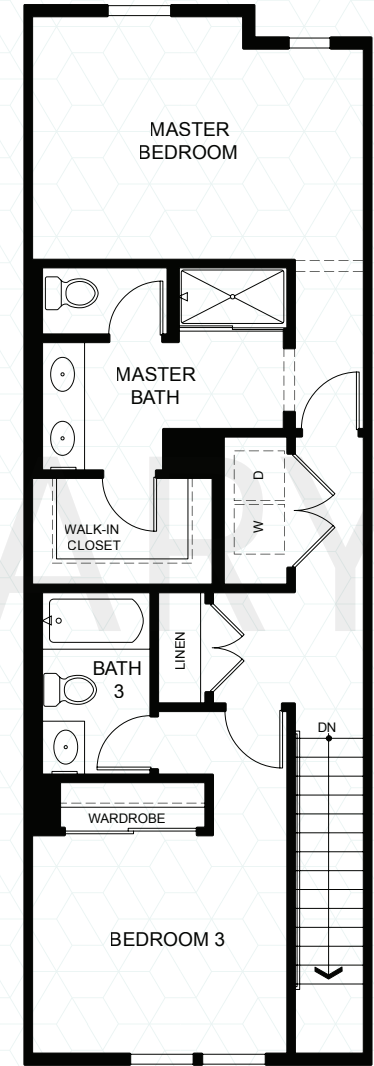
3 Baths



FIRST FLOOR



SECOND FLOOR



THIRD FLOOR

# Plan 1A

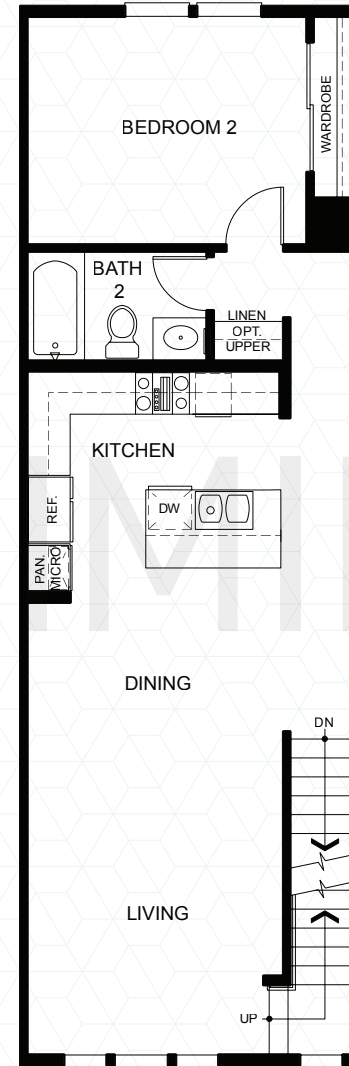
Approx. 1,634 Sq. Ft.

3 Beds

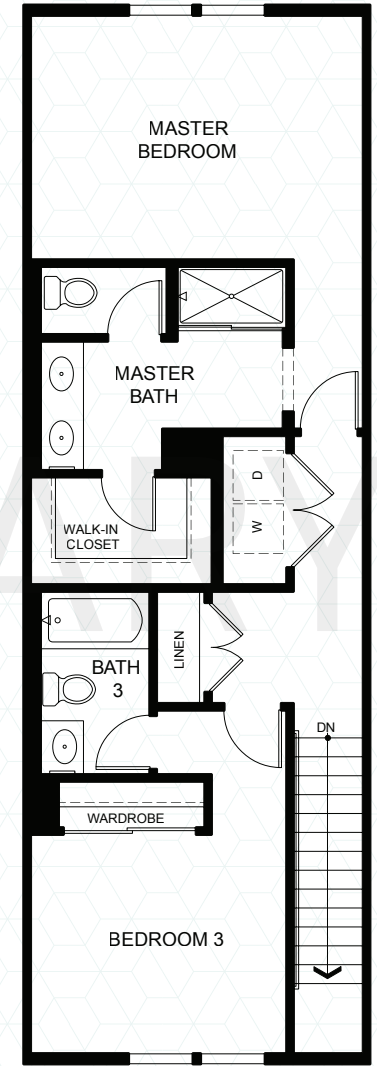
3 Baths



FIRST FLOOR



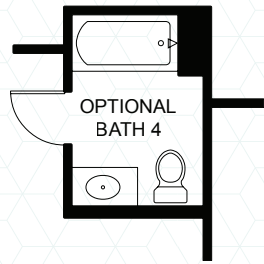
SECOND FLOOR



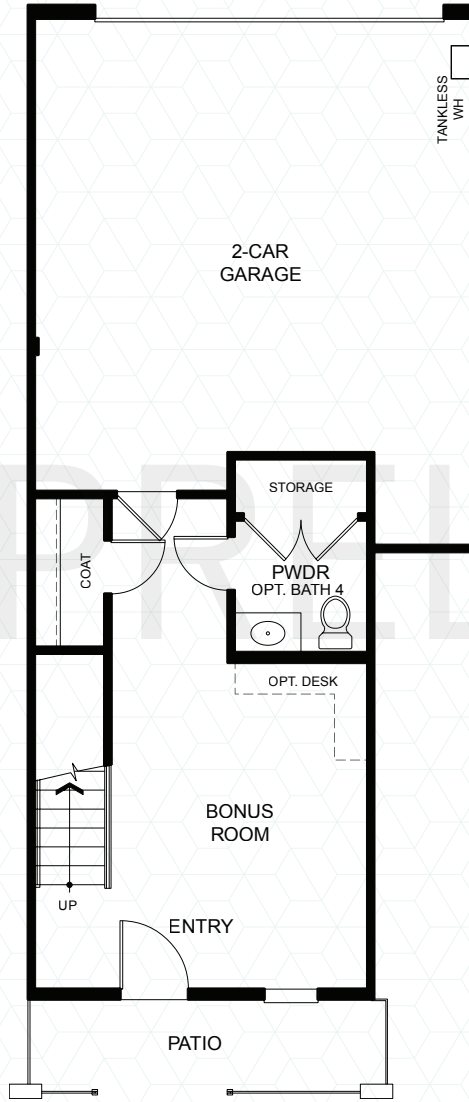
THIRD FLOOR

# Plan 2

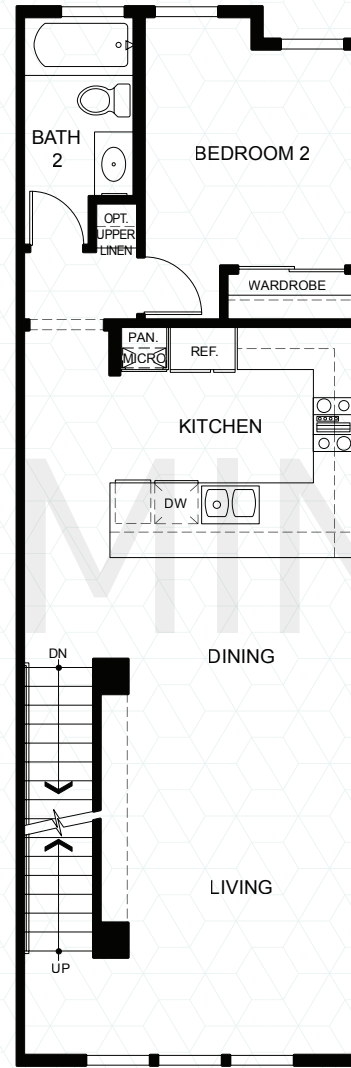
Approx. 1,899 Sq. Ft.  
 3 Beds + Bonus Room  
 3.5 Baths



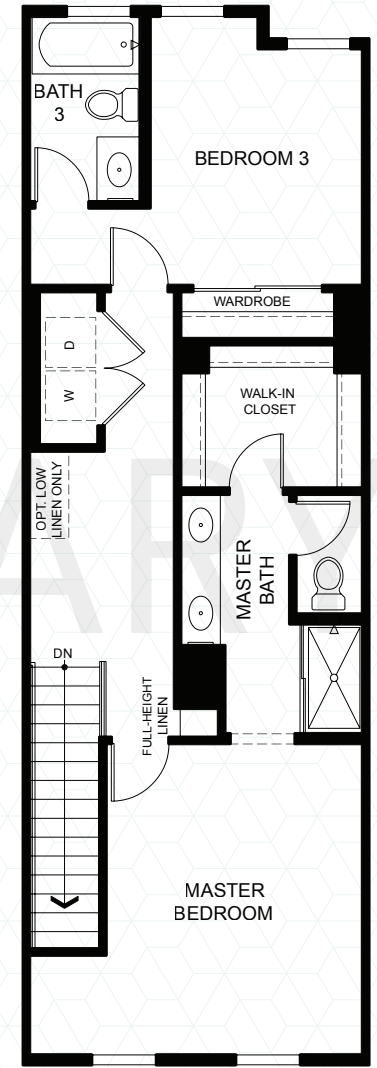
OPTIONAL BATH 4



FIRST FLOOR



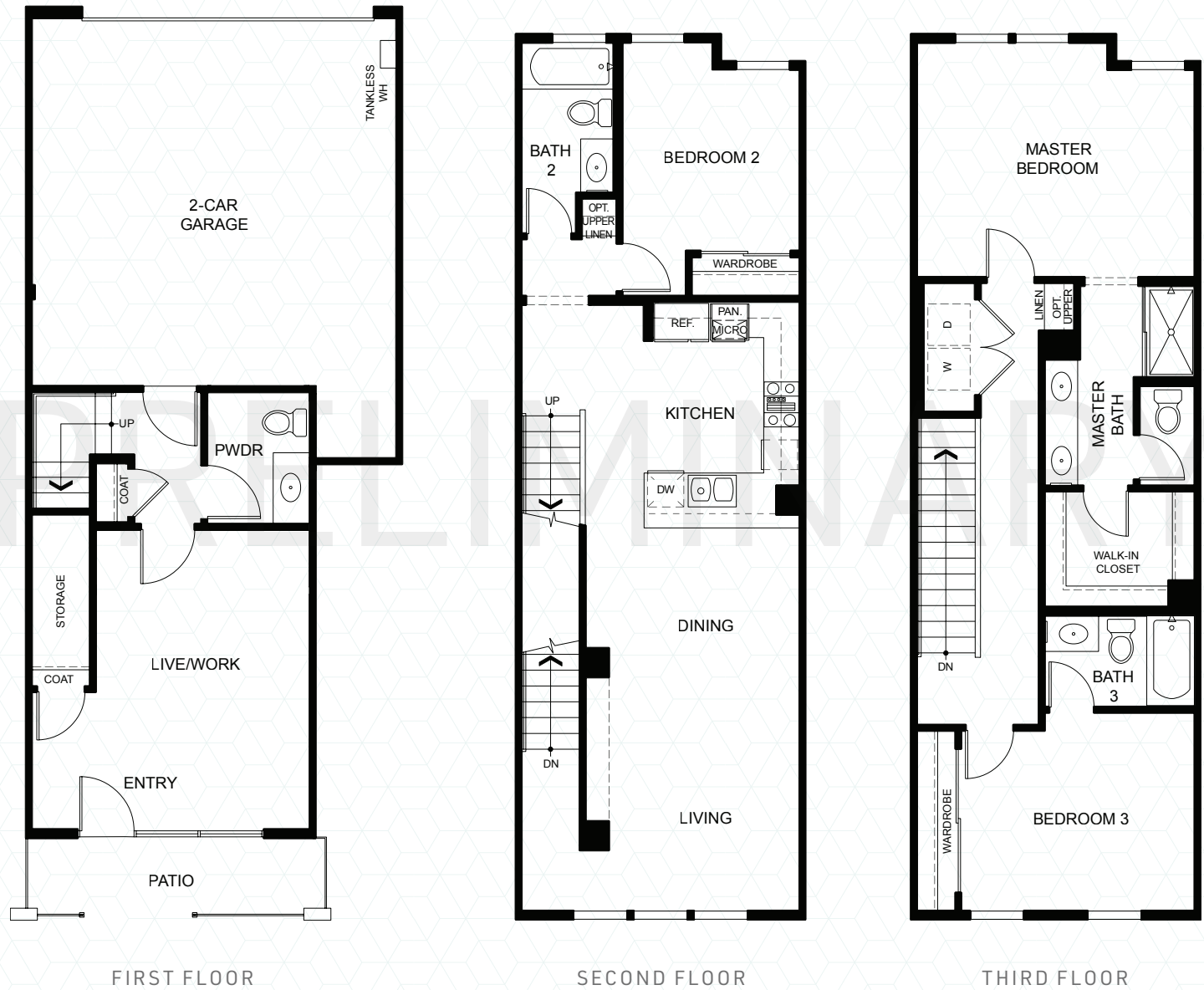
SECOND FLOOR



THIRD FLOOR

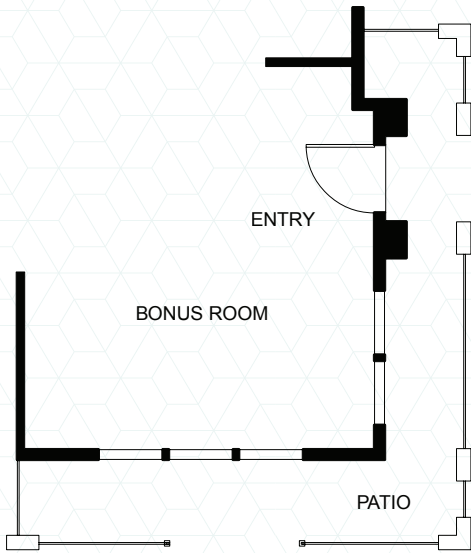
# Plan 2 L/W

Approx. 1,894 Sq. Ft.  
3 Beds + Live/Work Space  
3 Baths

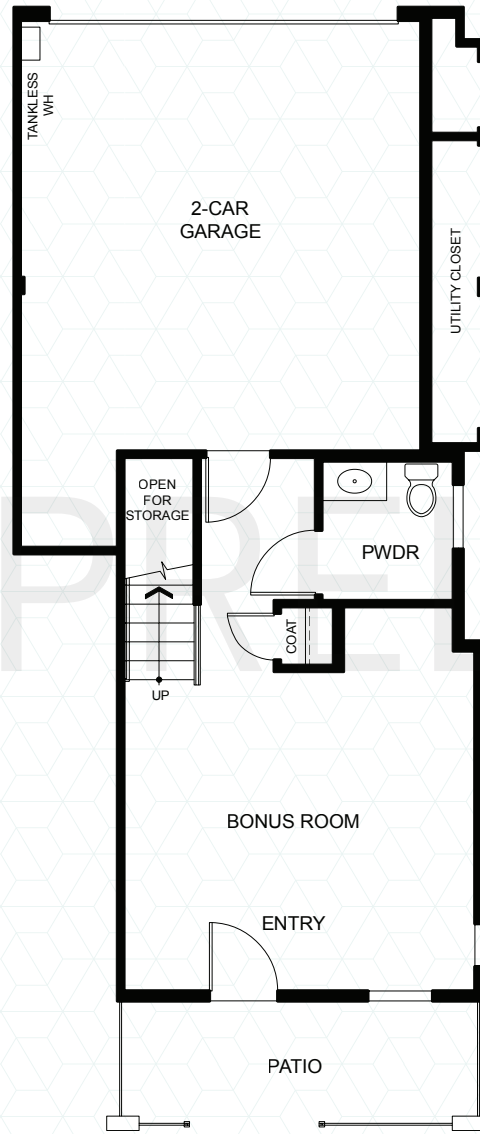


# Plan 3

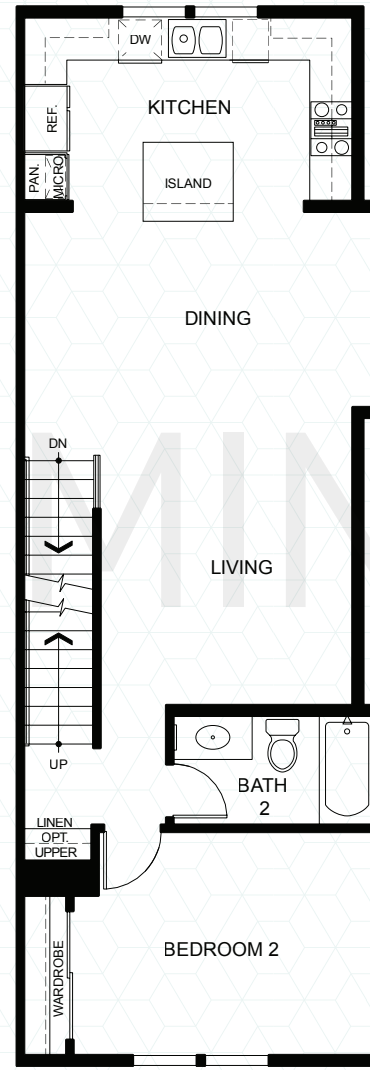
Approx. 1,971 Sq. Ft.  
 3 Beds + Bonus Room  
 3.5 Baths



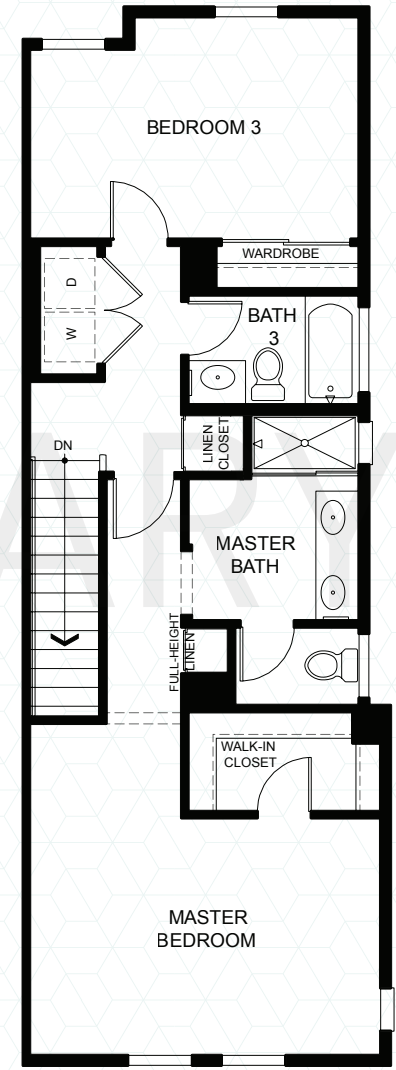
FIRST FLOOR W/SIDE ENTRY



FIRST FLOOR



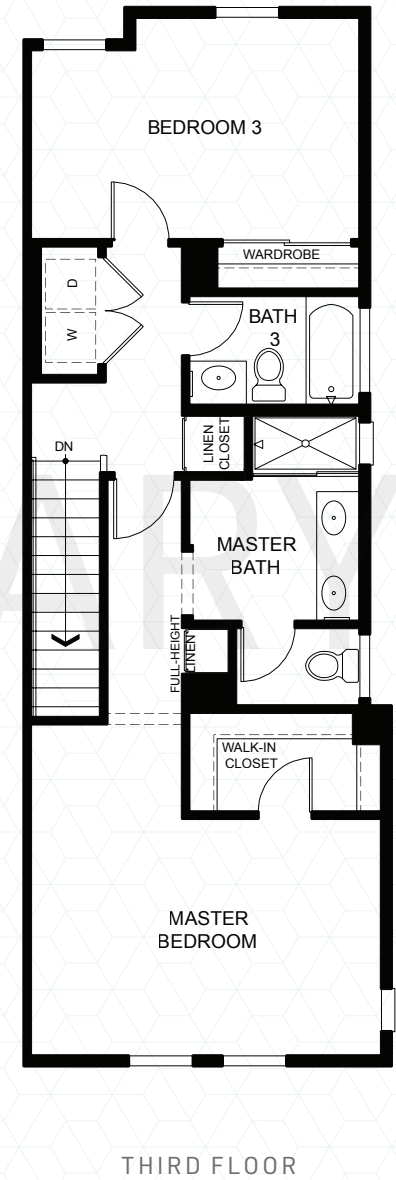
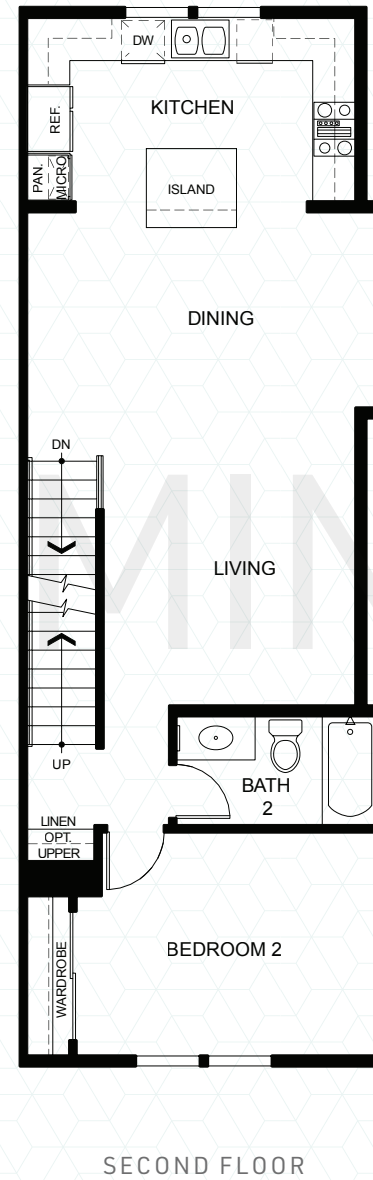
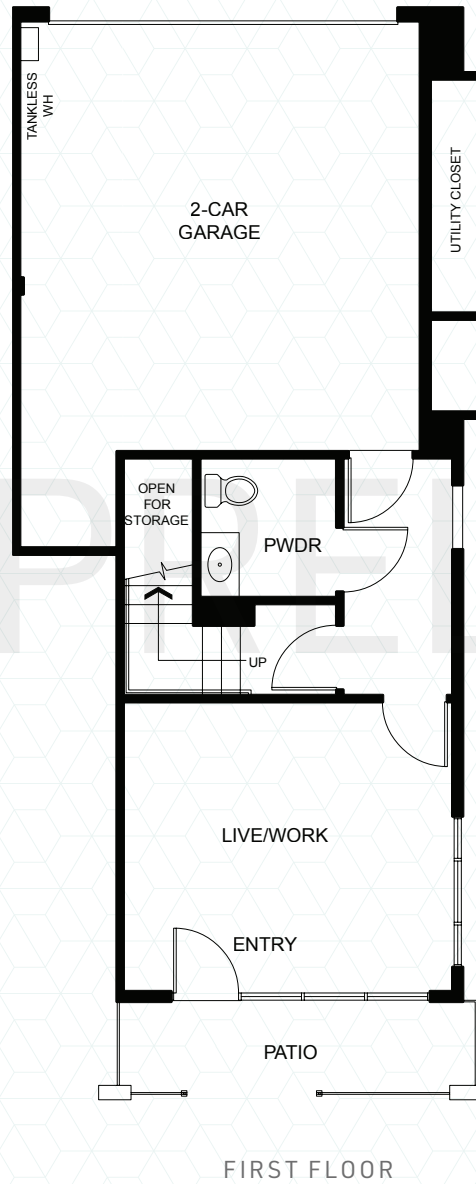
SECOND FLOOR



THIRD FLOOR

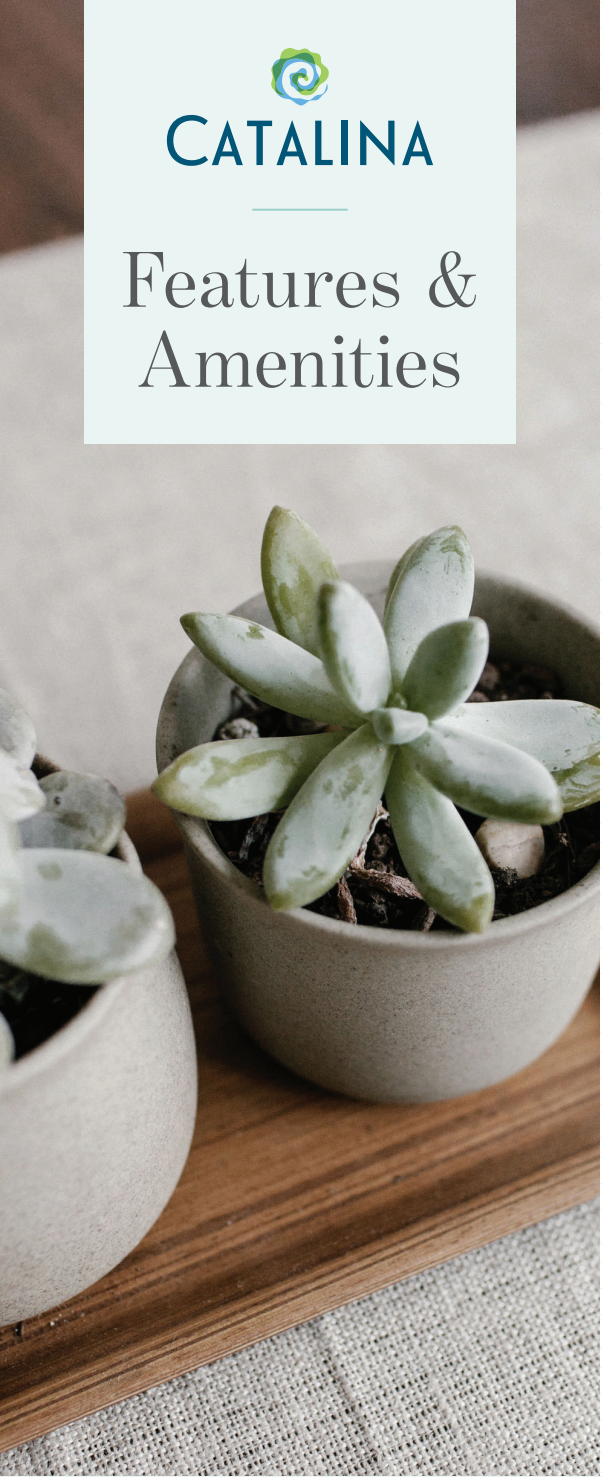
# Plan 3 L/W

Approx. 1,950 Sq. Ft.  
3 Beds + Live/Work Space  
3.5 Baths





# Features & Amenities



## Connected Living

Near technology employers and easy commute to employment hubs

Centrally located in the heart of Santa Clara

Situated near great schools, shopping and dining

Close to parks, recreation and entertainment

Stylish exterior designs and spacious floor plans, including live/work options

## Designer Interiors

Impressive 8' interior doors

Kwikset® handlesets in Venetian bronze at entry

Premium Sherwin-Williams® Pearly White walls, ceiling and trim

Elegant staircases with paint-grade balusters and newel posts

## Captivating Gourmet Kitchen

30" stainless steel Bertazzoni® gas range with 30" undermount hood

Built-in Bertazzoni® microwave

Stainless steel energy-efficient Bertazzoni® dishwasher

LED flush lighting and under-cabinet task lighting

Crafted hardwood cabinetry with adjustable shelves, soft-close doors and drawers with polished chrome pulls

Quartz kitchen counters with 6" backsplash and full backsplash at range

Stainless steel sink with Kohler® pull-down faucet

½ horsepower InSinkErator Badger® disposal

Stainless steel Bertazzoni® Master Series freestanding French-door refrigerator

Five-cycle Electrolux® front-load washer and dryer in white

## Pampering Master Suite

Spacious master bedroom with walk-in closet

Crafted hardwood cabinetry with adjustable shelves, soft-close doors and drawers with polished chrome pulls

Inviting e-stone bathroom counters with Kohler® undermount sink and beveled mirrors

Lavish shower with clear glass enclosure

Polished chrome Kohler® faucets

Sterling® Windham™ elongated commode

## Energy Efficiency and Highlights

Structured wiring package with telephone, cable television and data (Cat6/RG-6 dual, high-speed ethernet) at select locations

Automatic garage door opener and transmitters

Convenient smoke and carbon monoxide detectors

White Decora® rocker light switches throughout

Energy-efficient Rinnai® tankless water heater

Honeywell® Z-Wave® programmable night set-back thermostat

Dual-zone HVAC system

Pre-plumbed for ice maker

Interlogix® smart hub with wireless contacts at all exterior and downstairs doors and one wireless motion sensor

Flat-panel TV prep in living room

Electric car charger prep in garage

Full-wrap, profile rain gutters with 3" galvanized downspout

Dual-glazed vinyl windows for energy efficiency

Live/work space (per plan)



## Site Map

### LEGEND

- PLAN 1
- PLAN 1A
- PLAN 2
- PLAN 3
- PLAN 2 L/W\*
- PLAN 3 L/W\*

R - REVERSE  
 \* - LIVE/WORK PLANS  
 \*\* - FIRST FLOOR W/SIDE ENTRY



NORTH  
 MAP NOT  
 TO SCALE

