

IBSTOCK

Tilebrick™

MORTARLESS BRICKWORK APPEARANCE



CREATING INNOVATIVE & CONTEMPORARY ARCHITECTURE

Welcome to Ibstock

Ibstock, the UK's largest brickmaker is one of the best known and trusted brands in the construction industry, with a reputation built on an unrivalled choice of over 500 different products from 21 manufacturing and distribution sites across the UK. This heritage and manufacturing capability has been used to develop a range of innovative products, which in addition to bricks includes prefabricated brickwork components and external wall insulation systems as well as a diverse selection of special shaped bricks and pavers.

The company is committed to ensuring a more sustainable future through its manufacturing, its communities and its products - investing over £70 million over the last 10 years.

This has led to many industry firsts including being the first UK brick manufacturer to be awarded a 'very good' rating for the responsible sourcing standard, BES 6001, which now applies to all of its brickworks across the UK.

Design & Technical Support **0844 800 4576**

Our Design & Technical teams offer advice on the performance and properties of all our products. Our team of design advisors can offer creative and cost-effective solutions to any design project for architects working with brick and other Ibstock products. CPD seminars covering design, technical and practical workmanship can also be provided on request.

Our Technical Services team will be happy to provide advice to help solve your brickwork problems together with technical information on any of our products. Call the helpline above to discuss your project, arrange a seminar with one of our experienced design advisors or discuss any aspect in the use of Ibstock products.

Sales Support **0844 800 4575**

Samples **0844 800 4578**

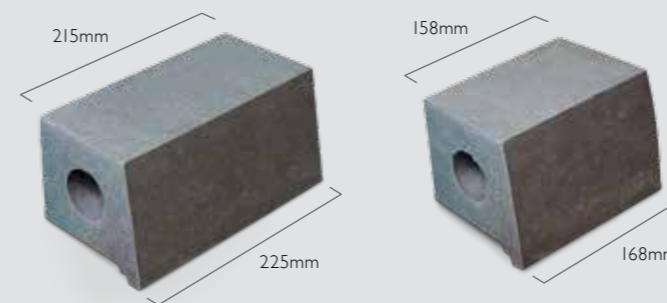
Tilebrick™

MORTARLESS BRICKWORK APPEARANCE

Creating Innovative & Contemporary Architecture

An extruded durable clay unit with clever profiled edges and a tile-shaped front face which replicates a tile-hung wall elevation when mortared together. Tilebrick elevations create façades with the appearance of mortarless brickwork.

For further information, please contact Ibstock's nationwide network of Design Advisors on **0844 800 4576**.



Tilebrick™ is increasingly being used in contemporary architecture to give a new dimension to façades in strong base colours, enhancing the design elements of the building whilst retaining the benefits of structural masonry.

Contents

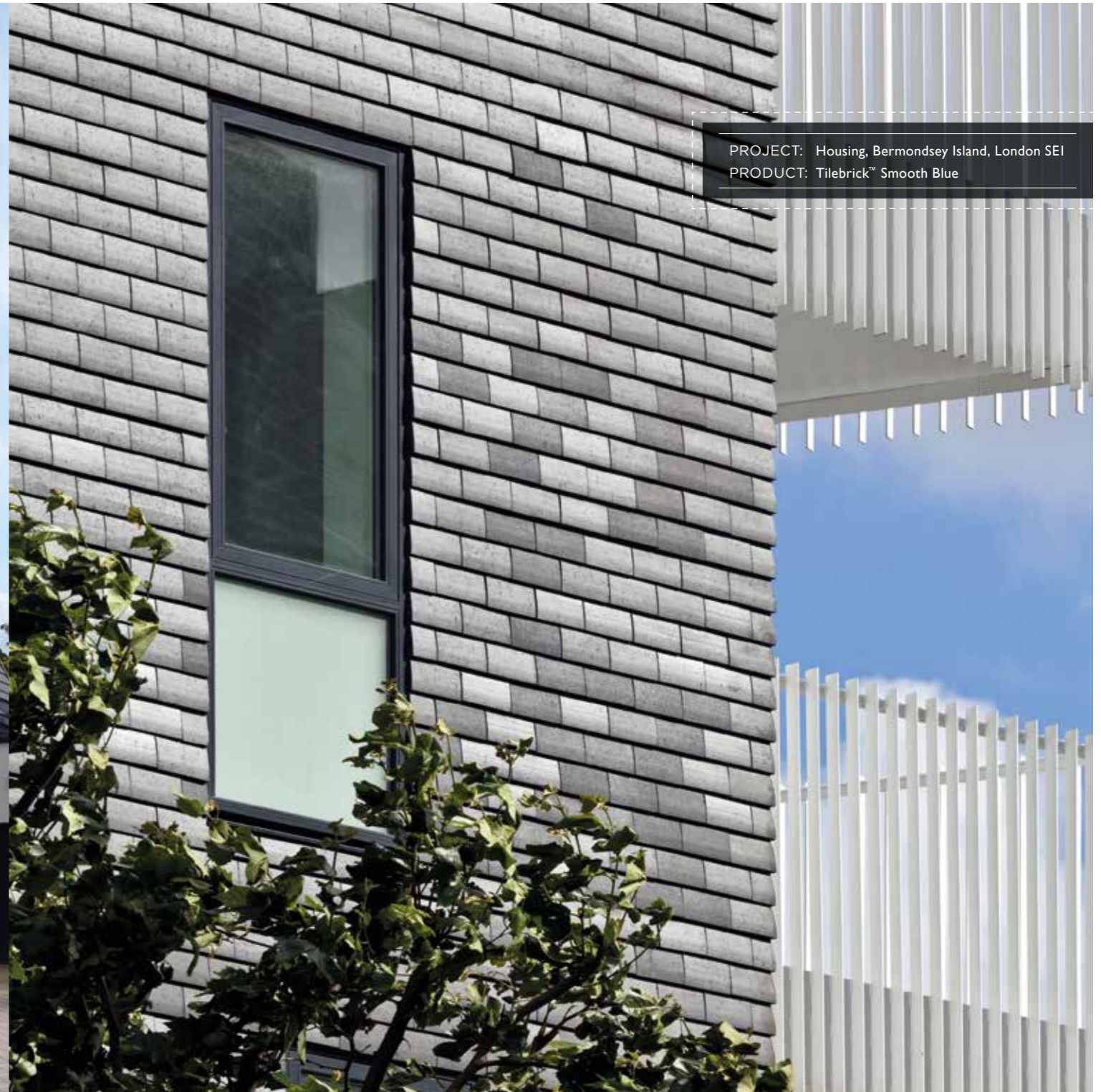
- 04 PROJECTS
- 07 COLOURS
- 08 PROFILES
- 09 ACCESSORIES
- 10 APPLICATION
- 11 CONSTRUCTION
- 12 DETAILS
- 15 PRODUCT SPECIFICATION CLAUSES

FRONT COVER:
Private House, London
PRODUCT:
Tilebrick™ Smooth Blue

PROJECT:
Private Housing, Saltdean, East Sussex
PRODUCT:
Tilebrick™ Sandfaced Red Multi



PROJECT: 42a Gloucester Road, Almondsbury
PRODUCT: Tilebrick™ Smooth Blue



PROJECT: Housing, Bermondsey Island, London SE1
PRODUCT: Tilebrick™ Smooth Blue



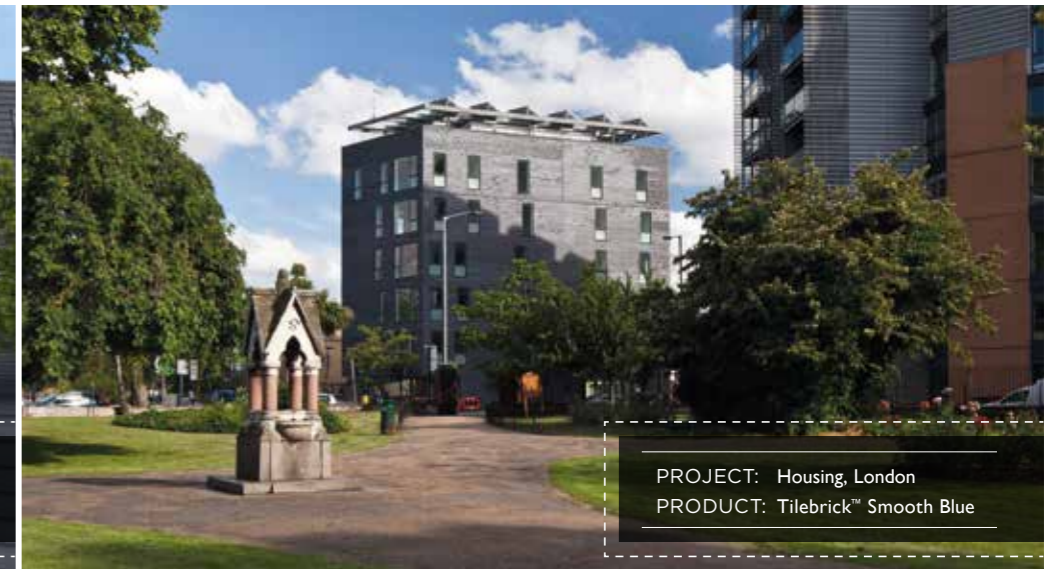
PROJECT: Youth Hostel, Cholderton, Wiltshire
PRODUCT: Tilebrick™ Sandfaced Orange



PROJECT: Apartments, Redhill Surrey
PRODUCT: Tilebrick™ Sandfaced Red Multi

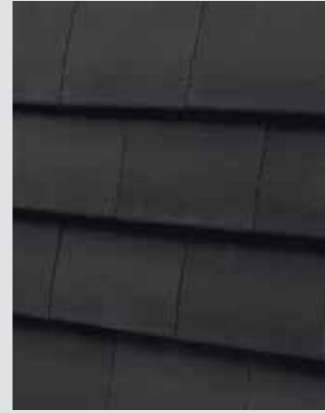


PROJECT: Housing, Almondsbury
PRODUCT: Tilebrick™ Smooth Blue



PROJECT: Housing, London
PRODUCT: Tilebrick™ Smooth Blue

PROJECT: Winchester Mews, Birmingham
 PRODUCT: Tilebrick™ Smooth Blue



Sandfaced Black
9822



Sandfaced Blue
9802

Colours

TILEBRICK™ IS AVAILABLE IN A RANGE OF SANDFACED AND SMOOTH TEXTURES



Sandfaced Brown
9801



Sandfaced Buff
9803



Sandfaced Orange
9820



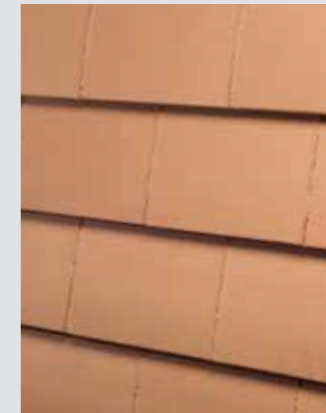
Sandfaced Red
9800



Sandfaced Red Multi
9841



Smooth Blue
9860



Smooth Buff
9804



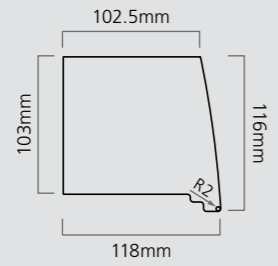
Smooth Red
9840

Product Name	Code	Durability*	Compressive Strength (≥ N/mm²)*	Water Absorption (≤%)*	Size (mm)	Type	Configuration	Factory/Location
Tilebrick™ Sandfaced Black	9822	F2	20	5	225/168 x 102 x 102	Wirecut Extruded	Horizontally Perforated	Cattybrook, Bristol
Tilebrick™ Sandfaced Blue	9802	F2	20	5	225/168 x 102 x 102	Wirecut Extruded	Horizontally Perforated	Cattybrook, Bristol
Tilebrick™ Sandfaced Brown	9801	F2	20	5	225/168 x 102 x 102	Wirecut Extruded	Horizontally Perforated	Cattybrook, Bristol
Tilebrick™ Sandfaced Buff	9803	F2	20	12	225/168 x 102 x 102	Wirecut Extruded	Horizontally Perforated	Cattybrook, Bristol
Tilebrick™ Sandfaced Orange	9820	F2	20	5	225/168 x 102 x 102	Wirecut Extruded	Horizontally Perforated	Cattybrook, Bristol
Tilebrick™ Sandfaced Red	9800	F2	20	5	225/168 x 102 x 102	Wirecut Extruded	Horizontally Perforated	Cattybrook, Bristol
Tilebrick™ Sandfaced Red Multi	9841	F2	20	5	225/168 x 102 x 102	Wirecut Extruded	Horizontally Perforated	Cattybrook, Bristol
Tilebrick™ Smooth Blue	9860	F2	20	5	225/168 x 102 x 102	Wirecut Extruded	Horizontally Perforated	Lodge Lane, Cannock
Tilebrick™ Smooth Buff	9804	F2	20	12	225/168 x 102 x 102	Wirecut Extruded	Horizontally Perforated	Cattybrook, Bristol
Tilebrick™ Smooth Red	9840	F2	20	5	225/168 x 102 x 102	Wirecut Extruded	Horizontally Perforated	Cattybrook, Bristol

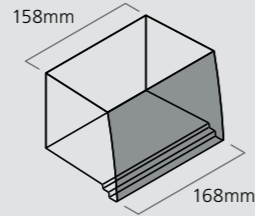
*To BS EN 771-1

Profiles

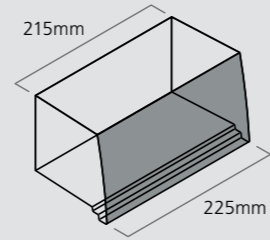
Curved



Section

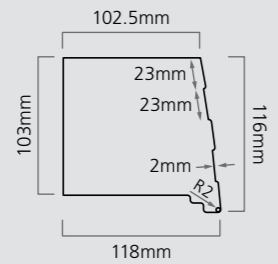


168mm Length

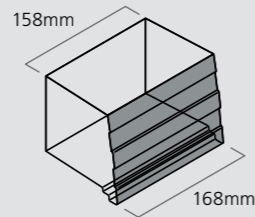


225mm Length

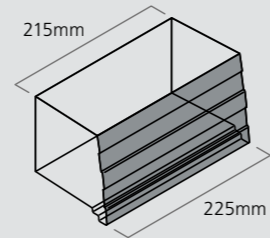
Banded



Section

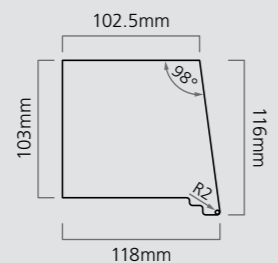


168mm Length

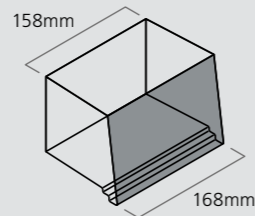


225mm Length

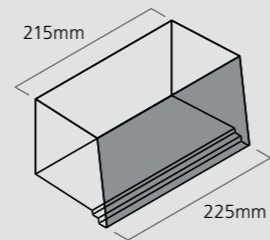
Planar



Section



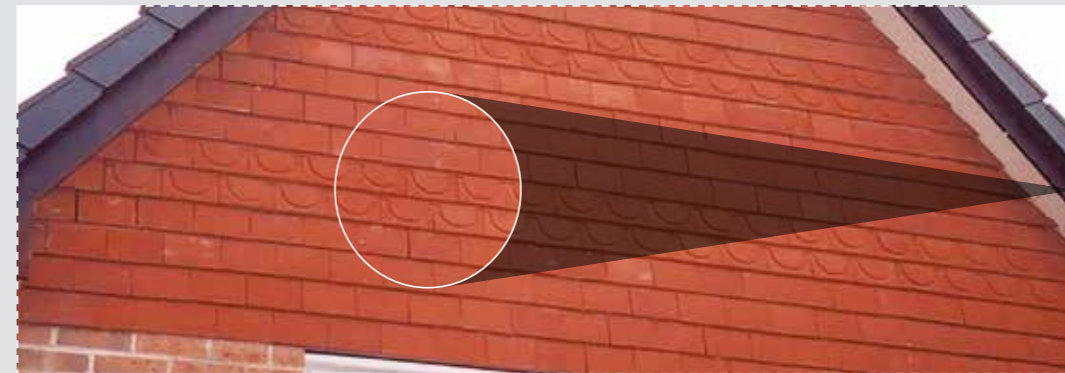
168mm Length



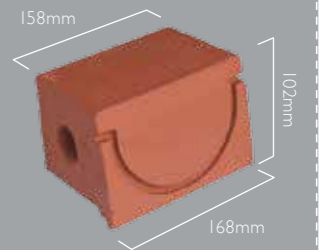
225mm Length

Accessories

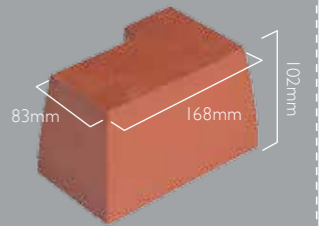
AVAILABLE TO SUIT BOTH 168 / 225MM TILEBRICKS



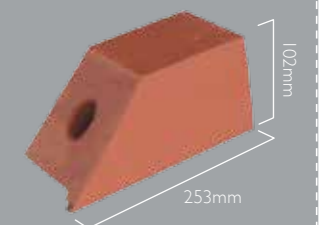
Unit TB 16 club Tilebrick™



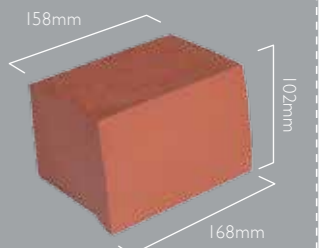
Unit TB 5 90° return 1x1/2 Tilebrick™



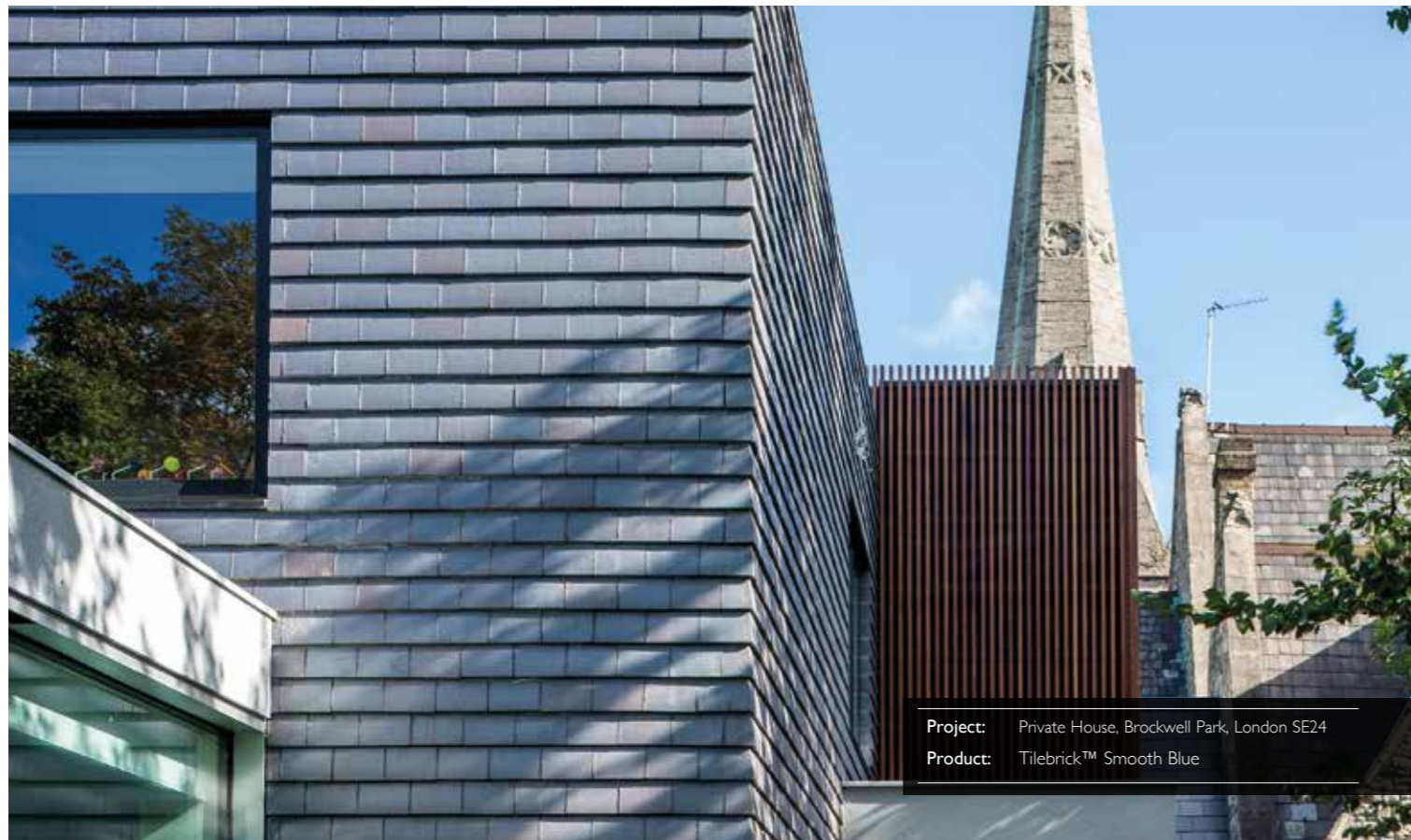
Unit TB 10 angled verge Tilebrick™



Unit TB 3 fair end Tilebrick™



Further accessories are available - for more information please contact your local Design Advisor on 0844 800 4576



Project: Private House, Brockwell Park, London SE24
Product: Tilebrick™ Smooth Blue

Application

Tilebrick has been designed with dimensions similar to traditional vertically hung tiles but using only one trade to increase speed of installation – no tilers or joiners are required as no tiles, battens, nails or lead dressings are necessary. This avoids repeat scaffold rental plus waiting times and costs are reduced.

Tilebrick co-ordinates with brick and block setting out - vertically, Tilebrick gauges two Tilebricks to one 225mm block coursing height.

Tilebrick is tapered from front to back when viewed on plan, allowing for two thirds of the perpendicular joint to be filled with mortar, whilst maintaining a mortar-less appearance on elevation. Mortar is also laid to a 10mm thick bed joint between each Tilebrick. Again, the appearance of mortar-less masonry is maintained due the Tilebrick lip masking the horizontal bed joint (for detailed laying instructions, see page 11). As the joint face is not exposed, a designation (iii) mix should be adequate in most cases, and good workability normally achieved with cement:limesand mixes will be advantageous. A well graded building sand should be used. For blue Tilebrick, a designation (ii) mortar with reduced water content will aid laying.

As with all masonry products, care should be taken during storage and construction to prevent products becoming saturated. Smooth Blue units stain readily if in contact with wet mortar, therefore it is essential to keep freshly laid Tilebrick protected from wet weather.

It is imperative that all walls must be covered when work stops. Whether construction takes place in hot summer months or over the winter period, Tilebrick needs adequate protection from follow-on trades, and also the elements, to ensure that performance and appearance is not compromised.

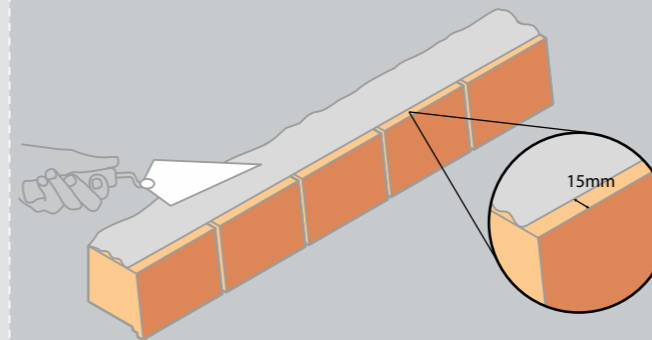
Tilebrick units are manufactured to a size tolerance of +1/-3mm on length, +/-2mm on width and +1/-3mm on height. Measurement should be taken across the face for length, across the centre top for width and across the back centre for height.

As with any special shaped unit, Tilebricks should be treated with care. Cutting of units will be required on site, therefore it is essential that these operations are carried out with an industrial diamond tipped, water cooled saw blade. After cutting, rinse with clean water and allow to dry before laying. Using dry blades may result in excess chipping.

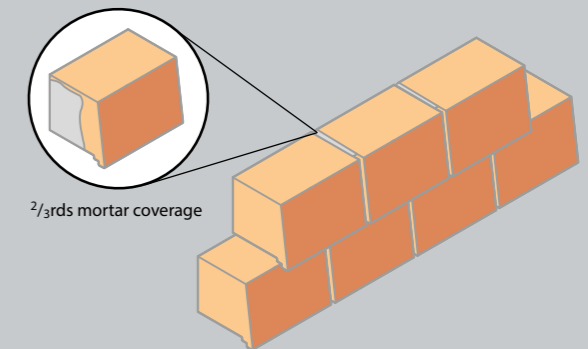
Always try to build as cleanly as possible and protect from saturation as discussed above. If the Tilebrick laying instructions on page 11 are followed, little mortar will require cleaning post-construction. However, if this does arise, use a wooden tool to remove any lumps of mortar from the surface. To clean down after mortar has cured, wet with a fine water spray and use a soft bristle brush, repeatedly rinsing. For more stubborn areas, a proprietary masonry cleaner may be used being sure to pre-wet the wall prior to application. After reaction, rinse with a fine water spray working from the top of the elevation downwards. Do not saturate the Tilebricks or use pressure-washing equipment.

Construction

1 Lay a nominal 10mm mortar bed using designation (iii) M4 or M6 class mortar and a well-graded building sand. Cut back mortar with trowel approximately 15mm from the face of the unit below. This is important to avoid squeezing out mortar under the lip onto the face – mortar should not be visible when viewed from below. Gauge at 225mm for two courses vertically. The lip at the front base of the Tilebrick is not designed as a guide for the mortar depth.

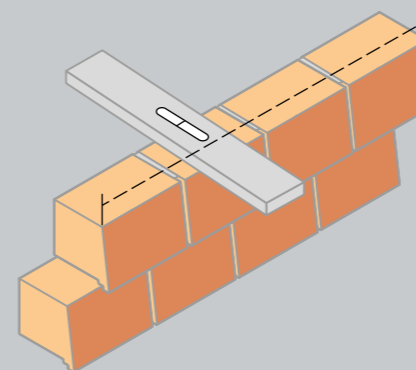


2 The vertical perpend joints are tapered to the rear to allow close positioning of the face and therefore only the rear 2/3rd's needs to be buttered so mortar is not visible when viewed from the front. Mortar must fully fill the rear 2/3rds however, where weep-holes are required, leave the perpendicular joint completely clear of mortar.

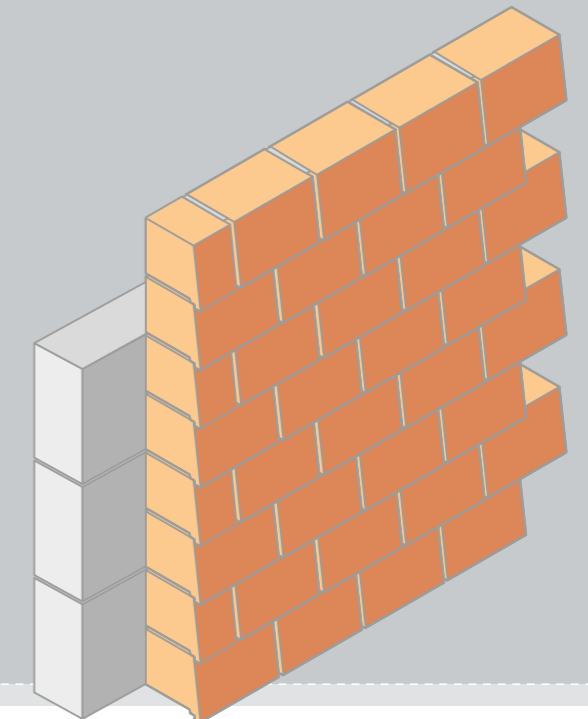


3 Due to the natural properties of clay (see tolerances) and setting out variances, perpends should be adjusted to accommodate any size variation, it is acceptable for the face perpend to vary in size from 1-3mm. End units should be laid and levelled in both directions.

The string line should be set to the front edge of the Tilebrick and cross-levels should be checked regularly to avoid tilting.

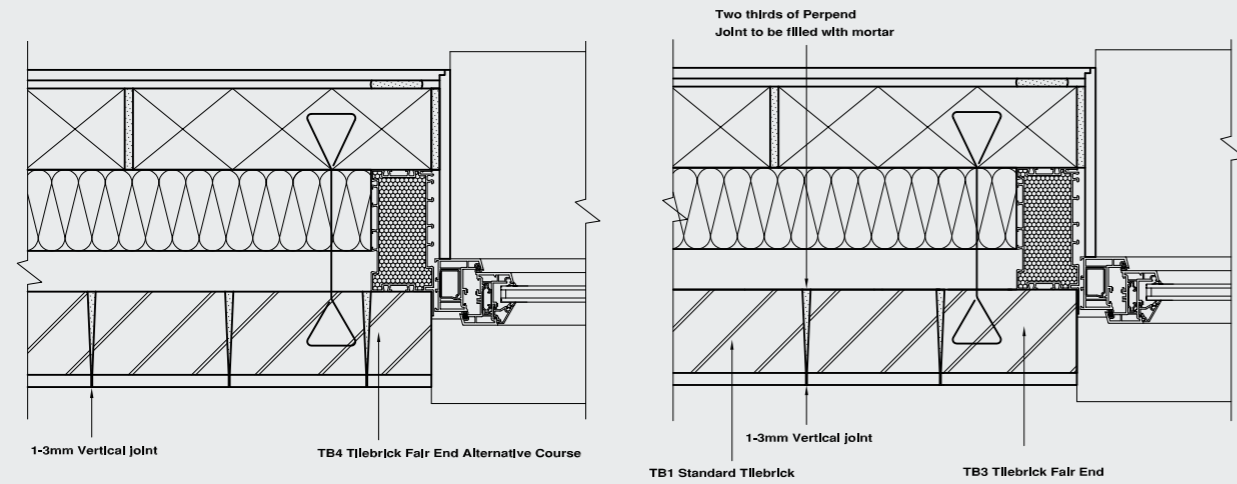


4 It is preferable to lead with the outer leaf to ensure that vertical joints are well-filled on the rear face, although the type of insulation used may preclude this. In any case the use of cavity battens is recommended as with normal brickwork.

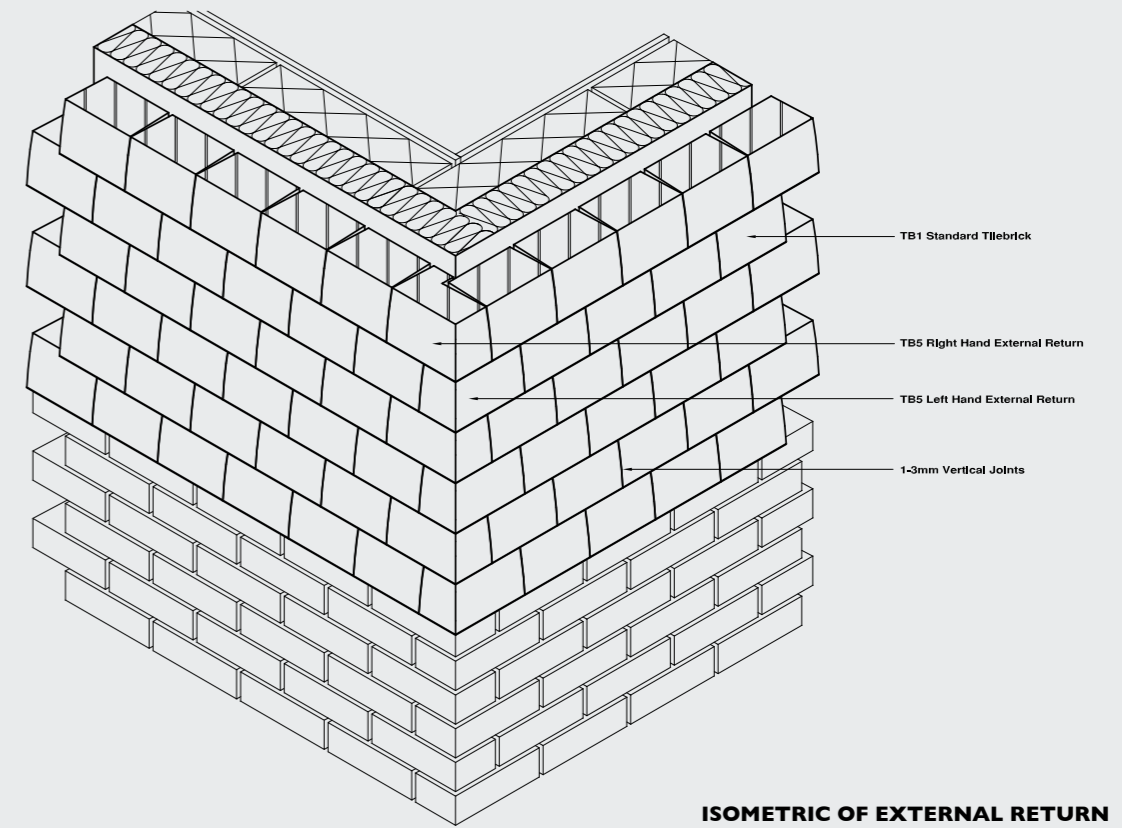


Details

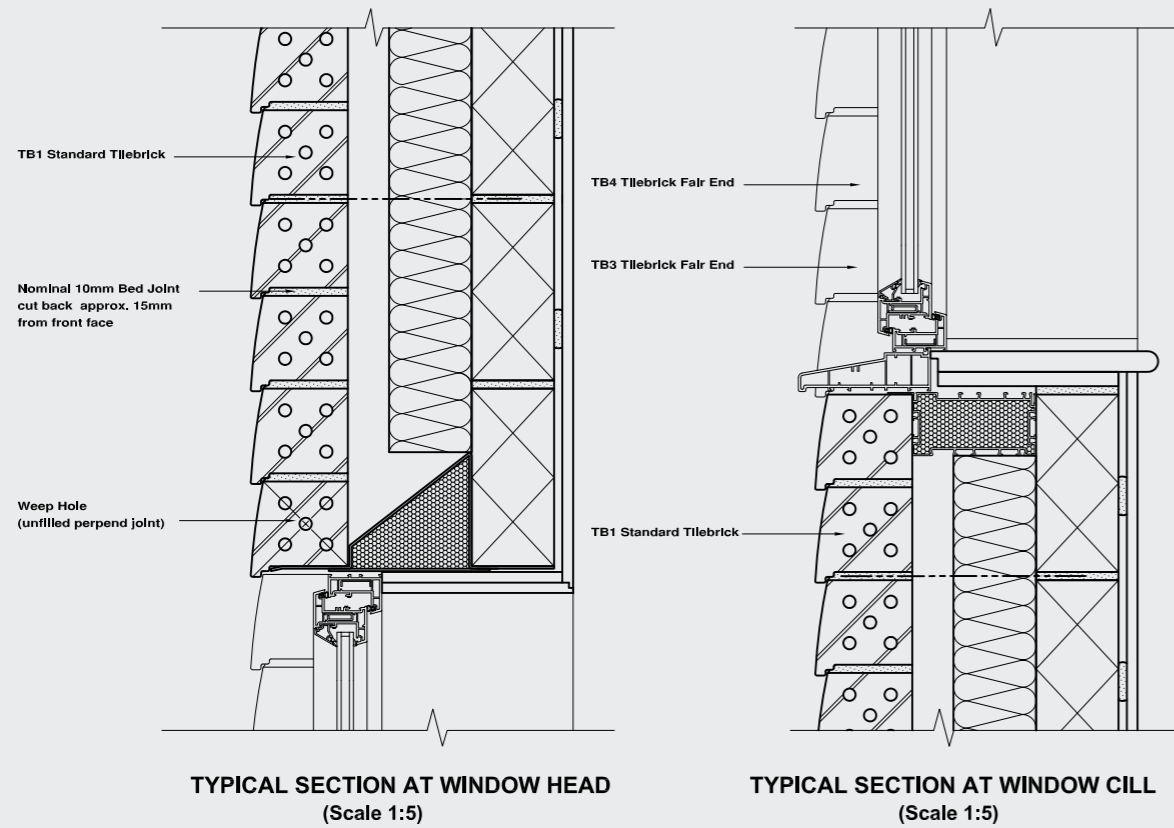
NOTE: TILEBRICK REFERENCES APPLY TO 168MM VERSION.



TYPICAL PLANS AT JAMB - ALTERNATIVE COURSES

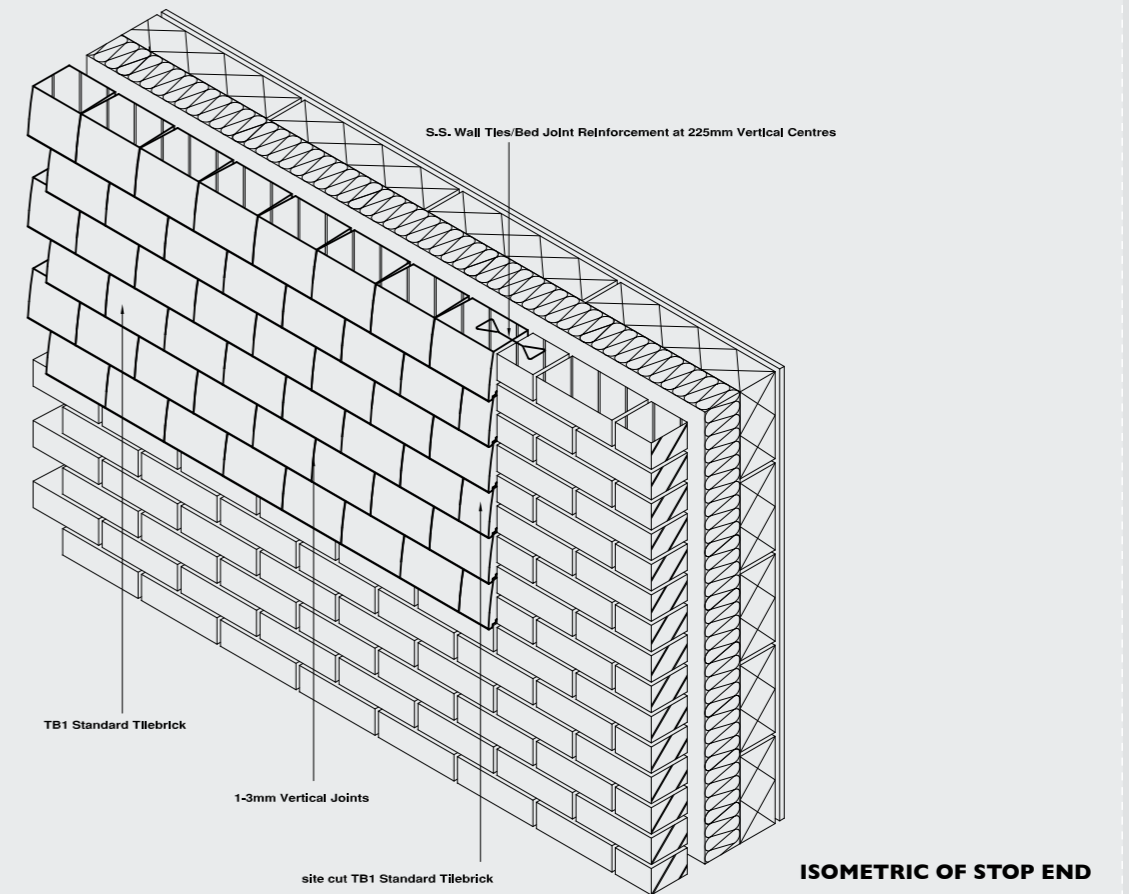


ISOMETRIC OF EXTERNAL RETURN



**TYPICAL SECTION AT WINDOW HEAD
(Scale 1:5)**

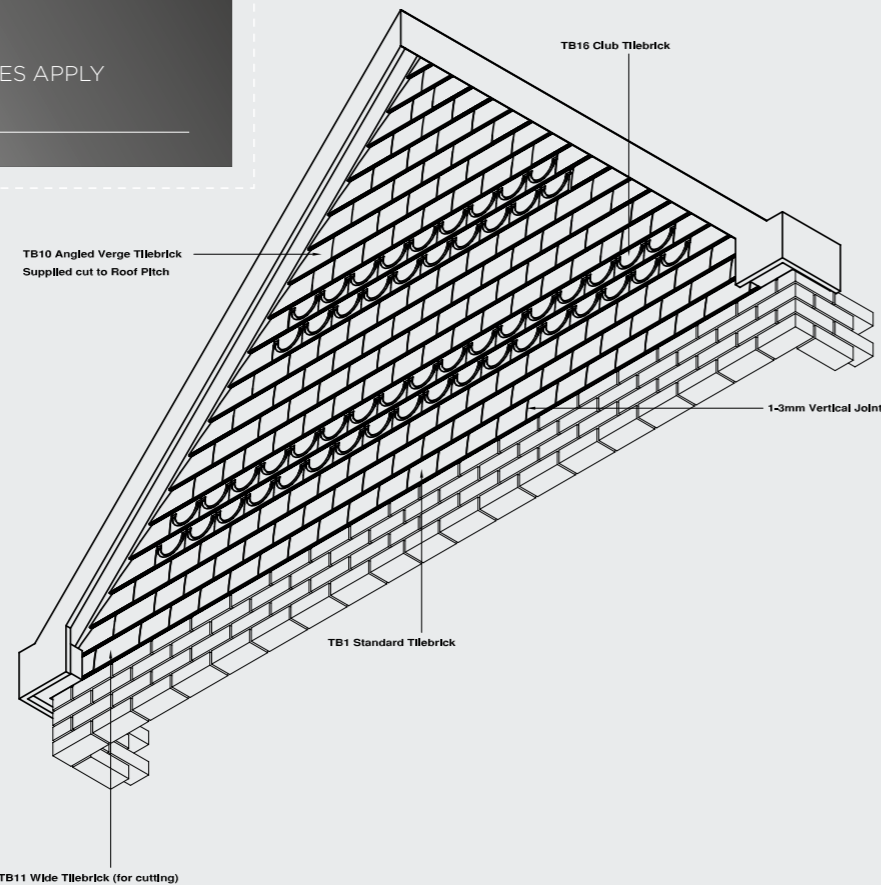
**TYPICAL SECTION AT WINDOW CILL
(Scale 1:5)**



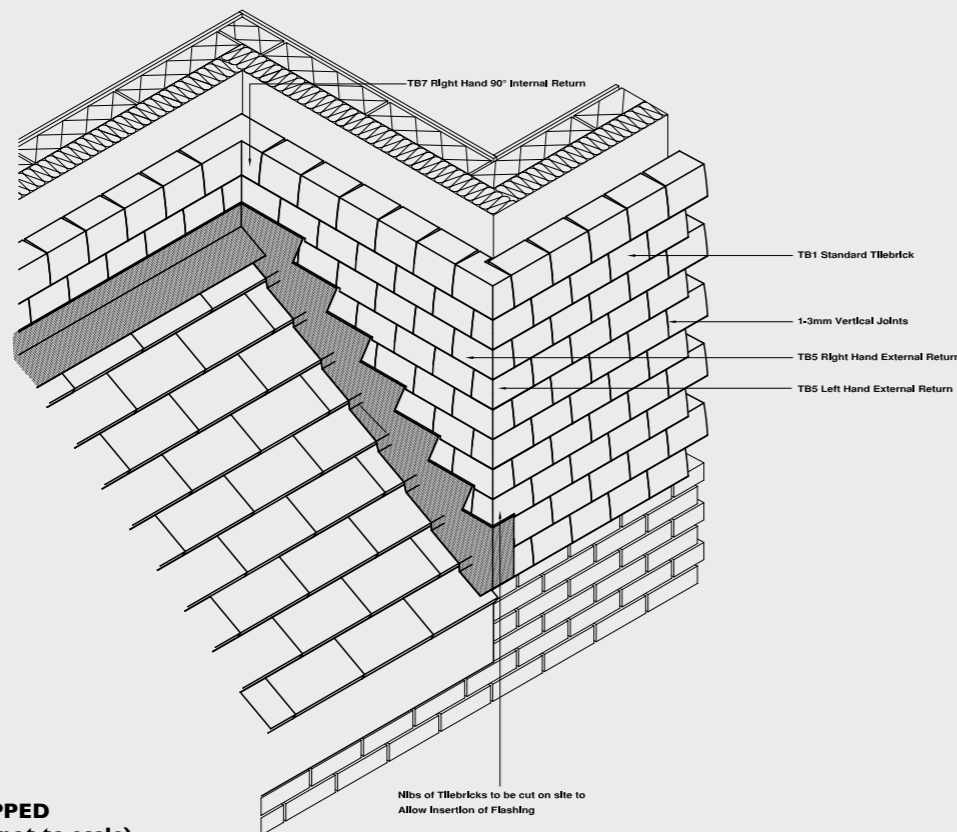
ISOMETRIC OF STOP END

Details

NOTE: TILEBRICK REFERENCES APPLY TO 168MM VERSION.



ISOMETRIC OF GABLE (not to scale)



ISOMETRIC OF STEPPED FLASHING DETAIL (not to scale)

Product Specification clauses

F10 BRICK/BLOCK WALLING

To be read with Preliminaries/General conditions.

TYPES(S) OF WALLING

I10 CLAY FACING BRICKWORK SHALL BE:

Product Name: _____

Size: _____

Manufacturer and reference: **IBSTOCK BRICK LIMITED**

Bricks are to comply with the requirements of BS EN771-1.

The durability designation of the bricks is to be **F2**

The soluble salt content is to be Category **S2**

The minimum compressive strength of the bricks is to be **> 20N/mm²**.

The maximum water absorption of the bricks is to be **≤** _____ by weight.

The initial rate of suction for the bricks is _____ kg/m²/min

Mortar: As 460 below

Mix: 1:1:6

Brickwork Bond: **HALF LAP**

WORKMANSHIP GENERALLY

420 SITE STORAGE

Bricks shall be inspected on delivery, carefully unloaded to minimise damage and set directly onto a well-drained, puddle free level area, not in contact with soil. They should be immediately protected from rain and snow.

It is important not to overload floor slabs or scaffolding with bricks.

Store units in stable stacks clear of the ground and clearly identified by type, strength, grade, etc.

Protect from adverse weather and keep clean and dry.

430 CONDITIONING OF BRICKS.

Do not use clay bricks when still warm from the manufacturing process.

460 MORTAR GROUPS.

Where mortar is specified by group number, select any mortar in that group as set out below. Mix proportions are by volume. Once work has commenced do not change mix proportions unless advised.

Mortar designation group	(i)	(ii)	(iii)
Portland Cement:Lime:Sand	1:3:3	1:3:4½	1:1:5-6
Portland Cement:premixed lime & sand - (proportion of lime to sand given in brackets)	1:3 (1:12)	1:4:4½ (1:9)	1:5-6 (1:6)
Portland Cement:Sand & entrainer	1:3	1:3-4	1:5-6
Masonry Cement:Sand & entrainer	--	1:2½-3½	1:4-5

500 LAYING GENERALLY.

All Tilebricks shall be laid strictly in accordance with the manufacturers instructions.

Full laying instructions, 'Tilebrick Installation Guide' are available from the manufacturer Ibstock Brick Limited

The cavity shall be kept clear of mortar and any other debris.

All damp proof courses shall be sandwiched between beds of mortar.

All facework shall be protected against damage during the course of the work.

In addition to the above, workmanship and site practice shall be in accordance with BS 8000 and PD6697.

Movement joints should be in accordance with EN1996, PD6697 and with the recommendations contained in 'Designing for Movement' published by Ibstock Brick Ltd.

520 ACCURACY.

Keep courses level and true to line. Accurately plumb all wall faces, angles and features. Unless otherwise specified, build brickwork/blockwork within the following permissible deviations:

Dimension	Permissible deviation (mm)
Position in plan of any point or specified fair face in Relation to the nearest building grid line at the same level	+/-10
Length (unless otherwise defined by adjacent construction):	
Straightness in any 5 m length	+/-5
Verticality:	
Up to 3 m height	+/-10
Up to 7 m height	+/-14
Overall thickness of walls	+/-10
Level of bed joints	
Up to 5 m for brick masonry	+/-11
Up to 5 m for block masonry	+/-13

560 COURSING.

Tilebrick should be set out to the manufacturer's instructions.

580 FROGGED OR PERFORATED BRICKS.

Tilebricks are horizontally perforated. No perforation is to be exposed in work. Solid end Tilebricks must be used where necessary.

645 UNEXPOSED JOINTS.

As the work proceeds, strike excess mortar off joints that will not be exposed to view in the finished work.

690 ADVERSE WEATHER.

Do not use frozen materials.

Do not lay bricks/blocks when the air temperature is at or below 3 °C unless mortar has a minimum temperature of 4 °C when laid and walling is protected.

Do not lay mortar on frozen surfaces.

Maintain temperature of the work above freezing until mortar has fully hardened.

Rake out and replace mortar damaged by frost.

When instructed, rebuild damaged work.

Protect newly erected walling against rain and snow by covering when precipitation occurs, and at all times when the work is not proceeding.

ADDITIONAL REQUIREMENTS FOR FACEWORK

710 THE TERM FACEWORK., where used in this specification applies to all brick/block walls finished fair.

720 ADVANCE REGISTRATION.

Obtain materials registered in advance by the Employer from the supplier(s) scheduled in I10 and 380 above. Supersede the Employer's registration and take over responsibility by an order to the supplier covering price, supply and delivery to suit the progress of the work.

730 SAMPLES.

Submit samples of bricks as specified in I10 above representing the range of variation in appearance and obtain approval of appearance before placing orders with suppliers.

740 REFERENCE PANELS.

A reference panel should be constructed in accordance with British Standard Institute PAS 70. The contractor must request bricks for the construction of a reference panel to be supplied direct from the manufacturer. All units supplied should be incorporated into the panel to ensure true representation of colour and finish. (Take note of the manufacturers instructions to assist with the construction of a site reference panel). The reference panel to be laid in the same bond, mortar colour and jointing intended for the building and to be accepted by the contract administrator before brickwork on site commences. The reference panel should be positioned in a clean, well-lit area and be available for the duration of the contract. A viewing distance of 3 metres must be allowed. The manufacturer must be given the opportunity to view the reference panel before further work proceeds.

750 COLOUR MIXING.

Agree with the manufacturer to ensure that the supply of facing units is of a consistent, even colour range, batch to batch and within batches.

Check each delivery for consistency of appearance with previous deliveries and with approved samples or reference panels; do not use if variation is excessive and advise the supplier immediately.

The Contractor shall mix from different packs (minimum 3) and deliveries to avoid patches, horizontal banding and racking back marks in the finished work.

760 APPEARANCE.

Units should be reasonably free from chips, deep or extensive cracks or lime.

Comparison should be made to the reference panel as outlined below. Cut units with a masonry saw.

Cut edges should not be exposed to view.

Set out and lay units to match appearance of relevant approved reference panel(s). Keep courses evenly spaced using gauge rods. Set out carefully to ensure satisfactory junctions and joints with adjoining or built-in elements and components. Protect facework against damage and disfigurement during the course of the works, particularly arrises of openings and corners.

830 CLEANLINESS.

Keep facework clean during construction and thereafter until Practical Completion. Turn back scaffold boards at night and during heavy rain. If, despite precautions, mortar marks are deposited on the face of masonry units, leave to dry then remove with a stiff brush.

Rubbing to remove marks or stains will not be permitted. In the event that cleaning should be required, this shall be done using a proprietary masonry cleaner in accordance with the manufacturer's instructions.

The use of jet washing or power washing should be avoided.

IBSTOCK

GREAT VALUE,
GREAT QUALITY,
GREAT SERVICE.

Ibstock Sales Office:
0844 800 4575

Design & Technical Helpline:
0844 800 4576

Sample & Literature Hotline:
0844 800 4578

Special Shapes and Brickwork
Components Sales Office:
0844 736 0350

Ibstock Brick Limited

Ibstock, Leicestershire, LE67 6HS

t: 01530 261999

f: 01530 257457

e: enquiries@ibstock.co.uk



Sign up for your
FREE copy of **design**

Download
the **APP!**

Ibstock's Design Advisory
Services & CPD seminars
Request your copy for
more information

Although the instructions contained in this publication and any other information published by Ibstock Limited are believed to be accurate at the date of publication, they are strictly for guidance only and Ibstock Limited accepts no liability in relation to their use or for any losses, howsoever caused. You are responsible for taking all reasonable steps to ensure your use of the goods/products conforms to all applicable health and safety requirements from time to time. If in doubt, please consult appropriately qualified persons. All products sold by Ibstock Limited are sold subject to Ibstock Limited's Terms and Conditions of Sale, a copy of which is available on request.



To find out more
scan this using your
smartphone.

think **BRICK**
A BRICK DEVELOPMENT ASSOCIATION INITIATIVE

For fast and easy access to the comprehensive range of Ibstock products and services visit www.ibstock.com
View CE mark information at www.ibstock-ce.com

© Ibstock Brick Limited 2015

Ibstock
Building
Products

Building a family of exceptional brands

