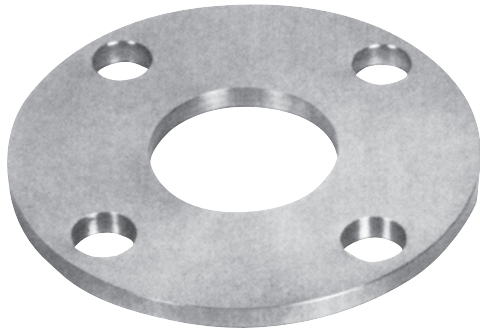
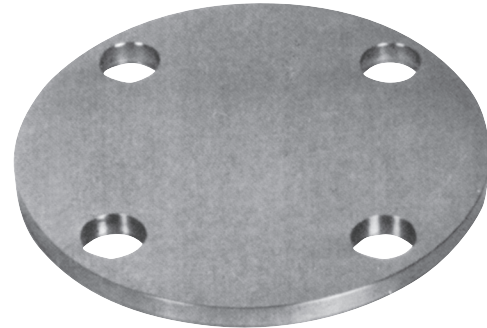


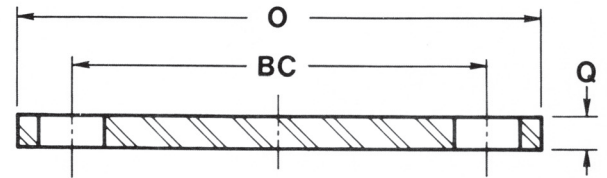
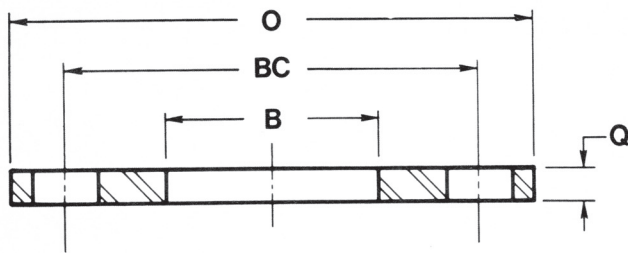
# LOW PRESSURE PLATE FLANGES



Slip-On



Blind



Nominal Pipe Size	Diameter (O)	Bore (B)	Bolt Circle Diameter (BC)	Bolt Diameter	No. of Bolt Holes	Flange Thickness (Q)	Weight in Pounds	
							Slip-On	Blind
1/2	3-1/2	.88	2-3/8	1/2	4	3/8	.48	.51
3/4	3-7/8	1.09	2-3/4	1/2	4	3/8	.59	.65
1	4-1/4	1.36	3-1/8	1/2	4	3/8	.70	.79
1-1/4	4-5/8	1.70	3-1/2	1/2	4	3/8	.81	.95
1-1/2	5	1.95	3-7/8	1/2	4	3/8	.94	1.12
2	6	2.44	4-3/4	5/8	4	3/8	1.33	1.62
2-1/2	7	2.94	5-1/2	5/8	4	1/2	2.44	2.99
3	7-1/2	3.57	6	5/8	4	1/2	2.64	3.46
4	9	4.57	7-1/2	5/8	8	1/2	3.70	4.90
5	10	5.66	8-1/2	3/4	8	5/8	4.95	7.50
6	11	6.72	9-1/2	3/4	8	5/8	5.58	9.20
8	13-1/2	8.72	11-3/4	3/4	8	5/8	8.01	14.00
10	16	10.88	14-1/4	7/8	12	3/4	12.00	24.50
12	19	12.88	17	7/8	12	3/4	17.50	33.50

1. All dimensions are in inches
2. Dimensional tolerances conform to ASME B16.5
3. Flange bore diameters agree with standard ASME B36.9M Sch-40S wall pipe. Other bore diameters can be supplied on special order.
4. Flat Face Flanges are supplied with a serrated spiral finish per ASME B16.5 Other gasket surface finishes can be supplied on special order.
5. Flanges are permanently marked by electro-chemical etching in accordance with ASME B16.5
6. Estimated flange weights are based on a density of .163 lbs/cubic inch