



LOCKE & ENGLAND
AUCTIONEERS & VALUERS

JANUARY SALE OF

**SELECTED ANTIQUE FURNITURE
& COLLECTORS' ITEMS,**

VIEWING

Saturday 26th January
10.00 am - 2.00 pm

Tuesday 29th January
9.00 am - 5.00 pm

Wednesday 30th January
9.00 am - 7.00 pm

Morning of the sale
from 9.00 am

AUCTION

**Antique Furniture &
Collectors' Items**

Thursday 31st January 2019
Commencing at 11.00 am

Leamington Spa Auction Centre

CATALOGUES

£5 by post,
online at www.leauction.co.uk

LIVE INTERNET BIDDING

Live internet bidding available via

the saleroom

The home of art & antiques auctions



LOCKE & ENGLAND
AUCTIONEERS & VALUERS

Weekly Thursday Sales

TO INCLUDE (SUBJECT TO DELIVERY)

Antique & Modern Furniture • Clocks • Books
Ceramics & Glassware • Pictures & Prints • Bicycles
Jewellery & Watches • Garage Tools & Equipment
Household Electrical Items • Building Reclaims
Office Furniture & Equipment • Retail Products & Stock
Horticultural & Commercial Equipment • Vehicles
Garden Furniture & Effects • Collectables

Entries Invited

**Friday & Monday 8.30am - 5.30pm
and Tuesday by appointment**

Leamington Spa Auction Centre 12 Guy Street, Leamington Spa, CV32 4RT
01926 889 100 or info@leauction.co.uk

www.leauction.co.uk

FURNITURE & CLOCKS



FURNITURE & CLOCKS

1

A mid 17th century and later oak and marquetry mule chest, probably from the Leeds area, the top with secret locking device lifting to reveal a later baize lined interior with fitted trays over florally carved styles flanking three bog oak and fruitwood inlaid panels over two inlaid drawers, h. 87 cm, w. 140 cm, d. 60 cm £300 - £500



Lot 3

2

A late 17th century oak backstool probably from South Yorkshire, the back with carved crescent shaped cross splats over arms with bobbin turned supports, solid seat and a bobbin turned front stretcher, h. 106 cm, w. 51 cm, d. 47 cm £100 - £150

3

A pair of late 17th century oak side chairs, the paneled back over a solid seat and turned front legs and stretcher, h. 96 cm, w. 46 cm, d. 44 cm £150 - £200



Lot 2 and 1

4

An 18th century oak six plank coffer, the top lifting to reveal a vacant interior with candle box, h. 59 cm, w. 109 cm, d. 40 cm £80 - £120

5

A late 18th or 19th century elm dough bin, the loose cover on a tapering base over chamfered legs with carry handles, h. 66 cm, w. 110, d. 60 cm £120 - £180



Lot 6

6

An 18th century oak coffer, the four panel top lifting to reveal a vacant interior with a candle box over a later carved three panel front, h. 63 cm, w. 140 cm, d. 56 cm £100 - £150

7

A George II oak slab back hall chair, the shaped concave back over the dish turned seat and shaped slab supports, h. 100 cm, w. 41 cm, d. 54 cm £50 - £80



10

A 19th century possibly sycamore turned bowl with reeded decoration and later zinc liner, h. 24 cm, dia. 50 cm £70 - £100



Lot 4

8

A late 17th century style oak armchair possibly South Yorkshire, the back with crescent shaped carved cross splats with drop finials over a solid seat, later arms and a bobbin turned front stretcher, h. 101 cm, w. 51 cm, d. 47 cm £70 - £100

9

An early 18th century oak coffer, the top lifting to reveal a vacant interior over a two panel front, h. 60 cm, w. 101 cm, d. 49 cm £80 - £120



Lot 7

11

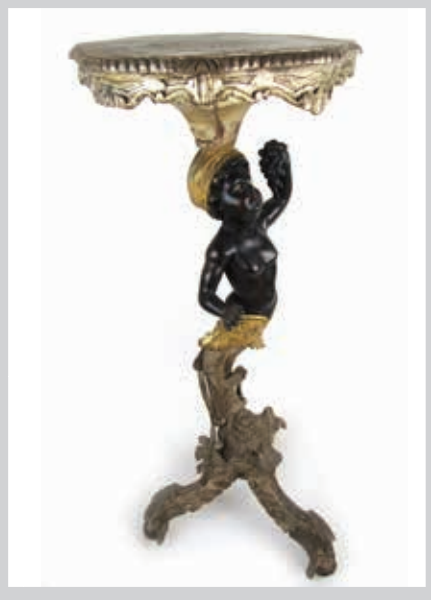
A late 18th century mahogany pembroke table, the drop leaf top over single end drawer on turned legs with brass cup castors, h. 74 cm, w. 91 cm, d. 85 cm £50 - £80

12

A late 18th century mahogany bow front chest of two short over three long drawers with reeded column corners, h. 96 cm, w. 107 cm, d. 54 cm £100 - £150

13

An early 20th century Italian poly-chrome jardiniere stand, the shaped top over a carved column depicting a Nubian holding a bunch of grapes on a grotto style base, h. 92 cm, £80 - £120



14

A 19th century leather and brass bound camphor wood trunk, the top with brass stud central lozenge and banding lifting to reveal a vacant interior, h. 42 cm, w. 92 cm, d. 46 cm £80 - £120



Lot 14

15

A Victorian mahogany extending dining table, the moulded top over an octagonal section column and platform base which splits in half when extended to take the two extra leaf's, h. 75 cm, max. l. 267 cm, d. 133 cm £150 - £250



Lot 15

16

A set of six Victorian mahogany balloon back dining chairs upholstered in a red button back fabric, the back over a serpentine seat and turned and carved front legs, h. 88 cm, w. 48 cm, d. 53 cm £80 - £120

17

A Victorian mahogany framed settee upholstered in a floral white gold fabric, the carved serpentine back over scroll arms and turned legs with brass cup castors, h. 99 cm, l. 222 cm, d. 66 cm £200 - £300

18

A modern mahogany centre table, the circular moulded top on C-scroll legs with platform under tier on brass paw castors, h. 73 cm, dia. 199 cm £300 - £500

19

A Victorian rosewood card table, the swivel action top with circular baize insert on a tapering cylindrical column, platform base and carved whorl feet, h. 75 cm, w. 92 cm, d. 46 cm £120 - £180



Lot 18

20

A pair of reproduction mahogany, satinwood banded and marquetry bookcases, the pediment over a dental cornice and astragal glazed doors enclosing a blue water satin lined interior with adjustable shelving, above a single drawer on turned and fluted legs, h. 227 cm, w. 110 cm, d. 53 cm £500 - £800

21

A pair of reproduction mahogany, satinwood banded and marquetry bookcases, the pediment over a dental cornice and astragal glazed doors enclosing a blue water satin lined interior with adjustable shelving above a single drawer and two field panel cupboard doors on turned feet, h. 225 cm, w. 110 cm, d. 53 cm £500 - £800



Lot 21



Lot 22

22
An Edwardian walnut, satinwood banded and hand painted bow front display cabinet, the moulded top over central glazed door flanked by blind panel cupboard door with painted plaques of ladies surrounded by urns and floral swags, h. 116 cm, w. 137 cm, d. 45 cm £200 - £300

25
A Victorian mahogany twin pedestal desk, the reverse breakfront top with superstructure over two columns of four drawers flanking a central drawer, on plinth base, h. 99 cm, w. 122 cm, d. 60 cm £80 - £120

23
A Regency and later mahogany side table, the top over the flame mahogany frieze with egg and dart moulding on turned and reeded legs with paw feet, h. 80 cm, w. 142 cm, d. 57 cm £150 - £250

24
A 19th century mahogany chest of drawers, the top over a serpentine fronted drawer, a row of three shaped drawers and three long drawers flanked by barley twist columns on turned feet, h. 147 cm, w. 118 cm, d. 53 cm £150 - £250



Lot 25

26
An Edwardian mahogany and boxwood strung display cabinet, the dental cornice over a central bow front glazed door on cabriole legs, h. 166 cm, w. 104 cm, d. 49 cm £80 - £120

27
A mid 18th century mahogany drop leaf table, the oval top supported on a single gate action over turned legs with pad feet, h. 71 cm, w. 130 cm, d. 109 cm £50 - £80



Lot 28

28
A reproduction mahogany and satinwood banded occasional table, the circular top on a turned column with a galleried swivel under tier on three splay legs, h. 68 cm, dia. 47 cm £80 - £120



29
A modern poly-chrome blackamoor floor lamp, the figure holding a cornucopia with six light branches, on carved base, h. 177 cm £150 - £250

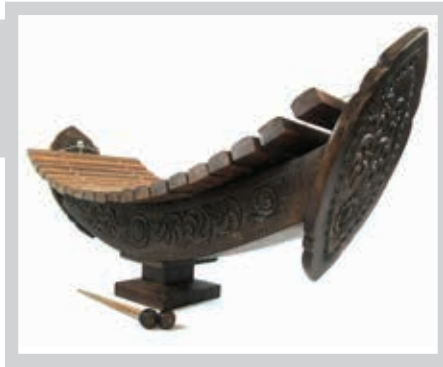


Lot 30

30
An early 20th century camphor wood and brass bound campaign style secretaire chest of drawers, the secretaire drawer with fitted interior and secret drawer flanked by two banks of two drawers over three long drawers on turned feet, h. 113 cm, w. 101 cm, d. 48 cm £200 - £300

31

A modern Thai xylophone, the carved base in the form of a boat, with two mallets, h. 52 cm, l. 127 cm *£50 - £80*



32

A Victorian walnut wardrobe, the cornice over a central mirrored door enclosing slides and drawers, flanked by two bookmatched panel doors enclosing hanging space, single drawer and compartment. on plinth base, h. 208 cm, l. 229 cm, d. 58 cm *£200 - £300*

33

A Victorian mahogany sideboard, the top with carved panel back over three cushion fronted drawers and four arch panel cupboard doors on plinth base, h. 148 cm, l. 197 cm, d. 60 cm *£100 - £150*

34

A Edwardian mahogany, boxwood strung and marquetry two seat settee upholstered in a striped gold and floral fabric, the top rail with ribbon design pen work marquetry over the kidney shaped seat on square section tapering front legs, h. 96 cm, w. 112 cm, d. 60 cm *£150 - £250*

35

A near pair of early 20th century cast silvered brass wall mirrors, the fleur-de-lis and serpent top over a beveled glass and four candle sconces with mask terminals, h. 52 cm, w. 33 cm *£70 - £100*

36

An early 19th century mahogany, ebony strung and crossbanded chest of two short over three long drawers on splay feet, h. 106 cm, w. 108 cm, d. 54 cm *£150 - £250*



Lot 33



Lot 36



Lot 38

38

A 19th century rosewood tea caddy of sarcophagus form with wasted sides, the top lifting to reveal two lidded tea caddy's flanking a mixing bowl compartment (bowl missing), with brass ring handles on bun feet, h. 19 cm, w. 38 cm, d. 23 cm *£100 - £150*



Lot 39

37

A pair of 19th century mahogany open arm chairs upholstered in a floral pink fabric, the carved top rail flanked by pomegranate finial's, over fluted and acanthus leaf carved arms on turned and fluted legs, h. 87 cm, w. 62 cm, d. 68 cm *£100 - £150*

39

An early 19th century rosewood, brass bound and strung writing slope, the interior with two secret drawers and stationary compartments, h. 16 cm, w. 41 cm, d. 23 cm *£50 - £80*

40 - 49
Spare Lots



Lot 37



50

A 1954 Ariel Square Four motorbike, 1000 cc, registration No. DS 6552, with V5, frame No. KR444, engine No. PL351. Odometer showing 12051 miles. The bike was assembled from parts all or some of which were not new when assembled when registered. Not in working order. £7000 - £10000



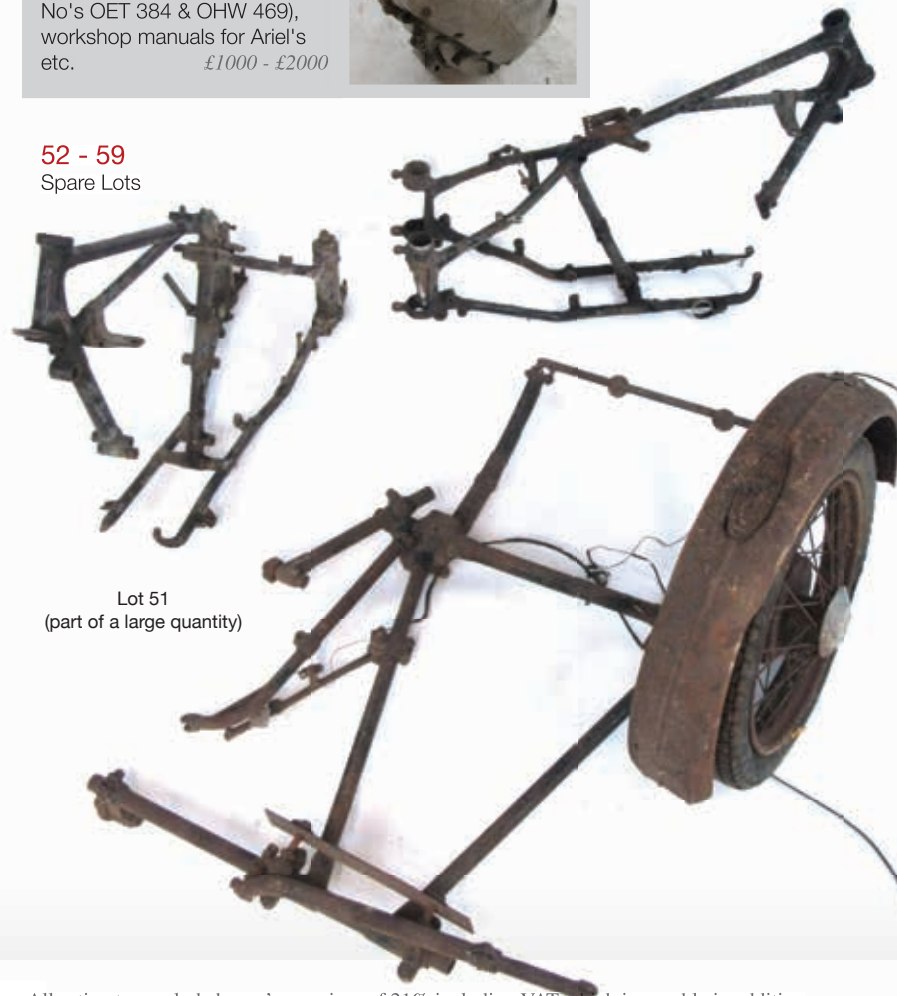
51

A large quantity of motorbike parts mainly from Ariel, to include side car frame (frame No. VC18), two motorbike frames (frame No's ET1550, CGM 1691: 1958 MKII Square Four and SC 548: 1951 MKI Square Four), fuel tanks, mud guards, Vincent engine parts, suspension forks, handlebars, exhaust parts, engine blocks and parts, cogs, springs and many other items along with paperwork to include two V5's and two log books (registration No's OET 384 & OHW 469), workshop manuals for Ariel's etc. £1000 - £2000



52 - 59

Spare Lots



Lot 51
(part of a large quantity)



60
A Murano glass ceiling hanging light fitting, the glass rods hanging from a metal frame in a conical swirl, h. 120 cm *£200 - £300*



Lot 80

61 - 79
Spare Lot

80
An 18th century mahogany longcase clock, the swan neck pediment with pierced fret over an engraved brass face with Roman and Arabic numerals, pierced hands, date aperture, second dial and an eight day movement, signed George Williams, Bristol, h. 238 cm, w. 50 cm, d. 26 cm *£300 - £500*



Lot 81

81
A 19th century French gilt metal and white marble mantle clock, the enameled face with Roman numerals alongside a figure of a gentleman holding a gun stood on a cast case with foliate and swag detail over an ebonised plinth with a glass dome, h. 51 cm, w. 42 cm *£250 - £350*



Lot 82

82
A 19th century mahogany long case clock, the swan neck pediment over the enameled face with Roman numerals, date and second dials, pierced hands, painted spandrels and arch top with an eight day movement, signed M. Brown of Leeds h. 238 cm, w. 73 cm, d. 28 cm *£200 - £300*

83
An early 19th century and later mahogany and boxwood strung longcase clock, the enameled face with Roman numerals, second and date dials, pierced hands, painted arch top and spandrels with an eight day movement, h. 217 cm, w. 53 cm, d. 23 cm *£120 - £180*



84
A 19th century French brass clock garniture, the face with Roman numerals and pierced hands surmounted by a lyre and cased in a pierced brass case with floral swags and scrolling brackets, together with a pair of matching five branch candle sticks, movement and case initialled J.I., h. 60 cm *£150 - £250*



Lot 85



Lot 86

86
A 19th century French gilt metal mantle clock, the enameled face with Roman numerals and pierced hands alongside a blacksmith sat on an anvil over a Rococo stand on a later painted plinth with a cracked glass dome, h. 45 cm, w. 40 cm

£200 - £250

87 - 150
Spare Lots

85
An early 20th century cast brass wall clock, the Rococo case surrounding the face with Arabic numerals and pierced brass centre, h. 48 cm, w. 30 cm

£50 - £80

Valuation Service

Should you require valuation advice or wish to consign items for our Fine Art Sales please contact us on 01926 889 100 or email us an image info@leauktion.co.uk

www.leauktion.co.uk



PICTURES AND PRINTS

PICTURES AND PRINTS

151

J. Scott (19th Century),
Highland cattle,
signed,
watercolour,
33 x 50 cm,
together with another by the same hand (2) *It is understood that the artist exhibited at the Royal Academy on four occasions and was known for his Welsh and Scottish landscapes £150 - £200



Lot 152

152

John Speed (1552-1629),
'Bedford Shire and the situation of Bedford decribed with the armes of thos Honorable Families...' [sic], hand-coloured engraving, with book entry verso,
40 x 52 cm £80 - £120

153

William Stone (fl.1865-1878),
a man walking down a road beside a lake,
signed,
oil on canvas,
29 x 39 cm, together with another by the same hand (2) £100 - £150

154

??? W. H. Wourg (19th Century),
a couple reclining beside a river,
signed,
oil on board,
27 x 41 cm £50 - £80

155

John Seymour Lucas RA (1849-1923),
'Muddle Temple Hall',
a study for 'The Favourite',
signed and titled,
oil on canvas,
previously laid to board, 41 x 55 cm £80 - £120



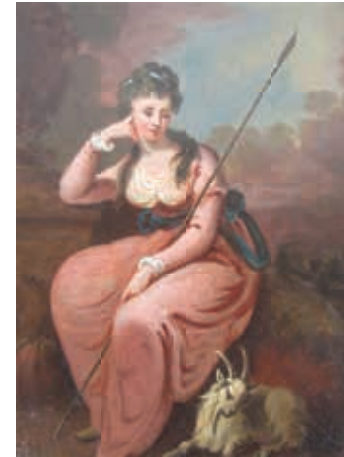
Lot 156

156

A Continental icon depicting the Madonna and child, with oil on board faces within silver relief-work bodies and matching surround, stamped 800, in a later pine frame, overall 33 x 25 cm £100 - £200

157

James Stark (1794-1859),
a family reclining near a lake, cattle in the background,
signed Jas. Stark,
oil on canvas,
35 x 45 cm £300 - £400



Lot 158



158

18th/19th Century School, a study of a seated lady holding a spear beside a goat, unsigned, oil on panel, 19 x 15 cm, together with an other of a similar theme *The latter bearing a label 'From the Tate, Sir William Ingram's Collection' £300 - £500



Lot 157



Lot 159

160
F. Webster (early 20th Century),
sailing boats at sea,
signed,
watercolour,
13 x 21 cm, together with another by the same
hand (2) *£50 - £80*

161
John Hall (1921-2006),
a still life,
oil on panel,
49 x 59 cm *£100 - £200*

162
Marguerite Chambovet (19th Century School),
a couple in an interior,
signed,
oil on board,
54 x 45 cm *£100 - £200*

163
Gary Bogard (American, contemporary),
a man leading a horse,
signed,
oil on canvas,
61 x 89 cm *£60 - £100*

159
Leighton Maybury (b.1929),
'Blue Titmouse',
signed, porcelain plaque,
17 x 11 cm
*The artist formerly worked for Royal Worcester
£40 - £60



Lot 161



164
William Henry Hopkins (1825-1892),
'Boys and Donkeys',
signed and dated 1855,
oil on canvas,
34 x 51 cm *Bearing a label verso '...For
Jennie...valued by Agneur in 1898 for 25'
£800 - £1200



Lot 163

165

19th Century School, a rugged coastline, sailing boats at sea, unsigned, oil on canvas, 32 x 43 cm

£100 - £200



Lot 166

166

John Bates Noel (fl.1892-1919), 'A Yorkshire Moor', signed J.B. Noel, oil on canvas, 31 x 46 *The artist was the son of David Bates and used his forename to avoid confusion. Forty-five of his paintings were exhibited at the RBSA

£100 - £150

167

John Bates Noel (fl.1892-1919), 'Eastnor Forest', signed J.B. Noel, oil on canvas, 25 x 33 cm *The artist was the son of David Bates and used his forename to avoid confusion. Forty-five of his paintings were exhibited at the RBSA

£60 - £100

168

John Bates Noel (fl.1892-1919), 'Milking Time', signed J.B. Noel and dated '91, oil on canvas, 25 x 34 cm *The artist was the son of David Bates and used his forename to avoid confusion. Forty-five of his paintings were exhibited at the RBSA

£60 - £100

169

18th/19th Century Continental School, a classical scene: a ruined castle atop a rugged landscape, unsigned, oil on panel, 21 x 26 cm oval, together with another by the same hand (2) *Bearing the inscription verso 'Views Landscape, Mr Morton, Kents Green, Worcester'

£300 - £500

170

Late 19th Century Chinese School, three watercolours on rice paper

£80 - £120

171

Maurice Flahet (1872-1964), La-Grand Place, Brussels, signed, oil on canvas, 79 x 59 cm



Lot 171

172

Late 19th/early 20th Century Japanese School, a twenty-eight page concertina book of woodblock prints, together with four other similar books and a collection of loose prints

£150 - £250

£150 - £200



Lot 169



Lot 173

173
 Bob Dylan (b. 1941), 'Vista from Balcony',
 2010 Collection, signed and numbered 290/295, limited edition giclee print,
 91 x 71 cm, with c.o.a. from Washington Green

£800 - £1200



Lot 178



Lot 174 (part)

174
 David Shepherd (1931-2017)
 "The Big Five"
 portfolio
 signed in pencil limited edition
 43 x 26 cm

£80 - £120

175
 Spare Lot

176
 L. Kovacs (Hungarian, 20th Century),
 A mother and child with a seated cat,
 signed,
 oil on canvas,
 39 x 48 cm

£80 - £120

177
 J. Shane (20th Century),
 Three girls picking flowers,
 signed,
 oil on canvas,
 49 x 59 cm

£100 - £150

178
 William Heytman (Dutch, b. 1950),
 A city scape with a fountain and crowds,
 signed,
 oil on canvas,
 68 x 97 cm

£400 - £600

179
 P. Caldecott (20th Century),
 '4607 tons City of Richmond launded 1878',
 bearing signature and date 1932,
 oil on board,
 52 x 90 cm,
 together with another depicting the (ship) City of
 Rome

£60 - £80

180 - 199
 Spare Lots



TO BE SOLD BY AUCTION

Thursday 28th March 2019
Jewellery & Watches

Commencing at 3.00pm



We hold three sales per year in Leamington Spa. These jewellery sales have become a highlight of the sales calendar and include a range of antique & modern watches, rings, sovereigns, bracelets, brooches, pendants and necklaces, etc.

Viewing: Saturday 23rd March – 10am - 2pm, Tuesday 26th March - 9am - 5pm
Wednesday 27th March – 9am - 7pm, Morning of sale from 9am

AUCTION ENTRIES INVITED

Leamington Spa Auction Centre 12 Guy Street, Leamington Spa, CV32 4RT
01926 889 100 or valuers@leauction.co.uk

www.leauction.co.uk

**CERAMICS, GLASS
& WORKS OF ART
SILVER & PLATE**



CERAMICS, GLASS AND WORKS OF ART, SILVER & PLATE

200

A large 20th century Korean celadon glazed baluster vase decorated with swallows and flowers on a lacquered wood stand, h. 67 cm
£70 - £100



Lot 201

201

A celadon glazed vase having white floral decoration and bronze fittings £80 - £120

202

An early 20th century Royal Doulton vase of slender form, having a naturalistic design to body and artists initials for Florence Jones to base, h. 27.5 cm £40 - £60

203

A large modern Baccarat crystal vase of flared form, bearing Baccarat mark to base and original label to upper body, h. 24.5 cm £200 - £300



204

A Baccarat crystal Tornado vase of flared form with open twist design, bearing Baccarat mark to base and original label to body, h. 23 cm £200 - £300

205

A Baccarat crystal Tornado vase of flared form with open twist design, bearing Baccarat mark to base and original label to body, h. 23 cm £200 - £300



206

A late 19th century Royal Worcester blush ivory figure of a 'Scotsman' in purple green and yellow attire, h. 15.5 cm £70 - £100

207

A Royal Worcester blush ivory figure of a 'Welsh Man' in purple green and yellow attire, mark and date code for 1898 to base, h. 17.5 cm £80 - £120

208

A large pair of Chinese famille verte vases decorated with gilt relief's and scenes of birds of paradise amidst foliage, h. 95 cm £500 - £800

209

A large Caithness studio collection 'Tsarina' glass vase form decorated in mottled pink and red colours. Limited edition No.16/150, complete with box, h. 37 cm £100 - £150

210

A late 19th century Royal Worcester tea set with pink and gilt decoration, comprising of a tea pot and coffee pot, toast rack, cups, saucers, bowls and a large serving tray mounted on a wooden base. £100 - £200

211

A Royal Doulton baluster vase decorated in a blue and brown flambe glaze with polychrome grape decoration, h. 36 cm £50 - £80



Lot 209

212

A Moorcroft 'Butterfly' clock decorated on a cream ground, h. 15 cm £40 - £60



Lot 208



Lot 211

213

A pair of 19th century Dresden four branch candlesticks having figures to base and encrusted with floral decoration, h. 53 cm
£300 - £500



214

A Victorian cranberry glass epergne having three branches on an inverted bowl base, h. 54 cm
£40 - £60

215

A large Baccarat crystal vase of flared and twisted form, bearing Baccarat mark to base and original label to body, h. 25 cm
£200 - £300

216

A Baccarat crystal bowl of oval form with ribbed pattern to body, bearing Baccarat mark to base and original label to body, h. 10 cm
£200 - £300

217 - 299

Spare Lots

300

After Paul Louis Emile Loiseau-Rousseau (1861-1927), a bronze figural group of two jockeys on horseback jumping a hedge. Mounted on a marble base, h. 29 cm
£200 - £300



Lot 300

301

After Guillaume Coustou (1677-1746), a late 19th century pair of bronze Marly horses, h. 24 cm
£100 - £200

302

A Meiji period Japanese bronze figure of a roaring tiger with striped finish and marks to belly. Resting on a hardwood base, l. 42 cm
£300 - £500



Lot 302

303

A 19th century Thai bronze figure of Garuda (a winged god from Hindu mythology), h. 32.5 cm
£100 - £200



Lot 304

304

An early 20th century Indian bronze figure of Shiva within a circle of fire, h. 36 cm
£50 - £80

305

A 19th century Thai eight-headed Buddha together with a Chinese bronze dragon bracelet and an Indian bronze mask
£80 - £120

306

A 19th century Indian carved stone figure of Ganesh together with a metal wirework frog and an early 20th century bronze Jagannath temple toy
£80 - £120



Lot 307

307

After Christopher Fratin, a bronze figural group of a fox and two cubs mounted on a black marble base, h. 11 cm
£50 - £80

308

A Chinese bronze incense burner in the form of a seated foo dog with paw resting on a ball, h. 10 cm
£50 - £80



Lot 308

309

A late 19th century/early 20th century Chinese bronze foo dog, modelled in a seated position on a slate base, h. 13 cm
£40 - £60



Lot 309



Lot 310

312
A limited edition 1990 Salvino Sport Legends figure, Muhammad Ali "The Greatest" signed by Ali to base, No.2857/3500, complete with box and COA, h. 21.5 cm. £150 - £250

313
A 19th century sketch book, the cover decorated with an oil on board of Warwick castle, l. 30.5 cm £50 - £80

314
A large late 19th century green turtle shell, l. 70 cm *Sold with CITES Article 10 transaction specific number: 575559/01 £100 - £150



Lot 315

315
A pair of WMF white metal twin handled spill vases with cast foliate decoration and glass liners, h.14 cm £50 - £80

316
A 19th century Indian brass tray decorated with copper and white metal relief's of dancers, dia. 58 cm £40 - £60

317
Two Chinese carved wooden foo dog figural groups together with one stone example and one other carved wooden foo dog £60 - £100

Lot 314



Lot 318

318
An early 20th century postcard album containing approximately 349 postcards including many of Vesta Tilley and other actresses £100 - £150

319
Edward Lear, 'Views in Rome and its environs', 1841. A folio containing 25 lithographs of Rome, l. 56 cm, w. 38 cm £800 - £1200

320
A pair of Chinese bronze foo dogs together with a carved padauk foo dog £40 - £60

321
A late 19th century French rosewood violin case, the red baize lined interior with maker label and compartments and paper label to base, l. 78 cm £50 - £80

322
An 18th century oyster shucker, the steel blade with stamped guard on a turned lignum vitae handle, l.14 cm £40 - £60



Lot 322

323
Spare Lot

324
Grant R Francis F.S.A.: Old English Drinking Glasses, Their Chronology and Sequence. Edition de luxe limited to one hundred copies signed by the author No.89. Published by Herbert Jenkins Ltd. 1926 £70 - £100

325
Bart, Sir John Wilson: The Royal Philatelic Collection published by the Dropmore Press, 1952, red leather bound with slip case. £70 - £100



Lot 321

326

Lawrence, T.E: Crusader Castles (Vol I. The Thesis), 1st edition no. 328/1000 published by The Golden Cockerel Press, 1936. Together with a fifth impression of The Seven Pillars of Wisdom, 1935 £100 - £150

327

A antler topped walking cane having carved face and a blackthorn shaft, l. 90 cm £40 - £60

328

A late 19th century ivory topped walking cane, the handle with carved rifle and bag motif above a malacca shaft, l. 83 cm £40 - £60

329

A George V silver topped walking cane having engraved scrolling decoration to top and an ebonised shaft. Hallmarked for London, 1922, l. 91 cm £40 - £60

330

An 1897 pattern George V British army officers sword by Henry Wilkinson No 50989, blade with royal cipher amidst etched scrolling foliate decoration with a half basket hilt and fish skin grip, sheathed in a field service leather scabbard. £100 - £150

Lot 331



331

A Victorian British naval officers sword, the blade with etched Royal arms and naval anchor, the brass hilt with folding side guard, wire bound shark skin grip, lions head pommel and sword knot. Sheathed in a leather and brass scabbard, l. 98 cm £100 - £200

332

A French 1874 pattern Gras bayonet with shortened quillion and metal scabbard, l. 45 cm £40 - £60

333

A 19th century percussion pocket pistol with walnut stock and trigger guard, l. 18 cm £40 - £70



Lot 334

334

A Webley Senior 0.177 cal air pistol with black finish and chequered Bakelite grips. £80 - £120

335

A decorative 19th century wall hanging percussion cap rifle A/F l. 99 cm £30 - £50



Lot 330



Lot 341

336

A 19th century percussion cap pistol having a walnut grip and an octagonal barrel £40 - £60



Lot 334

337

A 19th century 1856 pattern percussion pistol bearing markings for Birmingham 1867 and a crowned EIG mark to lock. Swivel ramrod to end of the barrel and lanyard ring to butt. l.34 cm £200 - £300

338

Two boxed Tri-ang Spot-on diecast vehicles including a No. 112 Jensen 541 and an Aston-Martin £80 - £120

339

A boxed Scalex clockwork Aston-Martin DB2 £50 - £80



340

A diecast vehicle modelled as the Golden Arrow, under license from Sir Henry Seagrave £30 - £40

341

Three boxed Corgi Toys vehicles including two 218 Aston-Martin D.B.4s and a 214 Ford Thunderbird £80 - £120



Lot 338

345

Nine boxed Corgi Toys diecast vehicles including a 214 Ford Thunderbird, a 218 Aston-Martin D.B.4, a 211S Studebaker 'Golden Hawk', a 224 Bently Continental Sports Saloon, a 229 Chevrolet Corvair, a 231 Triumph Herald Coupe, a 234 Ford Consul Classic, a 419 Ford Zephyr Motorway Patrol and a 424 Forst Zephyr Estate Car £150 - £200

346

A group of playworn diecast vehicles including a 651 Dinky Supertoys Centurion Tank, two 235 H.W.M., a 150 Rolls Royce Silver Wraith etc., together with a boxed Lone Star Roadmasters Ford Sunliner Convertible £80 - £120

347

A boxed Dinky Supertoys 972 20-ton lorry mounted-crane 'Coles' £20 - £30



Lot 349



Lot 350

348

A Corgi GS/24 Commer 3/4 ton chassis constructor set £40 - £60

349

A boxed Dinky Toys 263 Superior Criterion Ambulance £40 - £60

350

A boxed Tri-ang Spot-on No.216 Volvo 122.S in yellow £100 - £150

351

A Mamod steam tractor with accessories £40 - £60



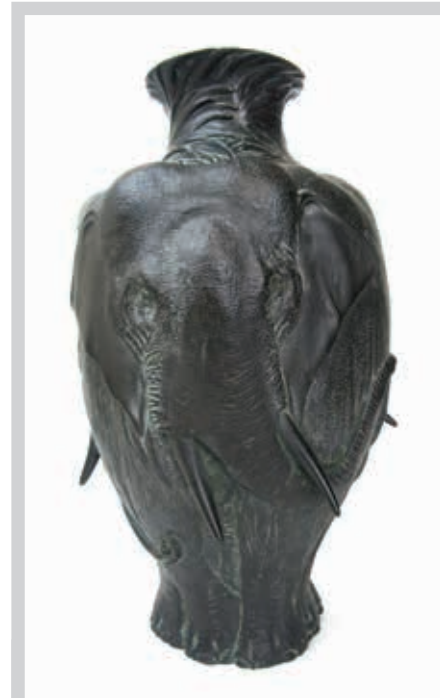
Lot 352

352

A late 19th/early 20th century brass Merryweather fireman's helmet, the front of the helmet bearing the letters 'E F B'. Complete with chin strap and liner and together with a selection of related items to include a leather fire brigade arm band, brass scales etc. £200 - £300



Lot 348



353

A Japanese Meiji period bronze vase decorated in relief with elephants having protruding tusks. Character mark to base, h. 32 cm £600 - £800

354

A 19th century leather fire bucket marked 'W.U.D.C' in red lettering, h. 34 cm £80 - £120

355

A large Lucas 'King of the Road' No.B54 lamp with related component together with an 'Atlantic bulb box', h. 22 cm £50 - £80

356

A military brass and sprung steel depth gauge 50ft made by Rabone Chesterman £30 - £50

357

A large model railway signal set on wooden base together set of signal levers, h. 50 cm £50 - £80



Lot 358

358

A 19th century percussion pocket pistol with walnut stock and scrolling motif to lock, l. 18 cm £40 - £60



Lot 359

359

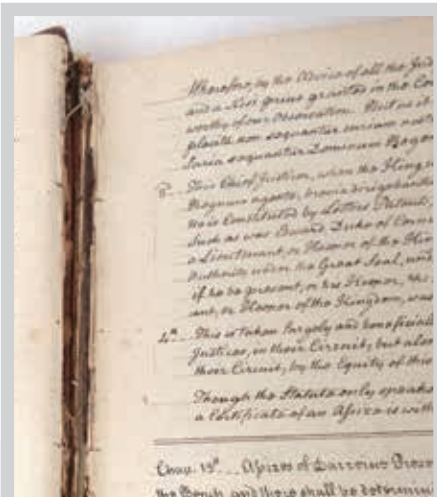
A 19th century double barrelled percussion pistol with fold down trigger together with one other percussion pocket pistol having a long tubular barrel A/F £70 - £100



Lot 360

360

A 19th century bone card box, the lid depicting a joker flanked by the king and queen of spades, together with a 19th century bone thimble holder with engraved scenes of lovers on the banks of a river etc. £70 - £100



361

Magna Charta (sic): Manuscript copy volume in a later brown buckram binding: 'Made in the ninth year of King Henry the third and confirmed by King Edward the first on the twenty eight year of his reign. With some short but necessary Observations from the Chief Justice Coke's comments upon it'. Transcribed from the printed copy by J. Brandwood in the year 1790. *The last 52 pages consist of a substantial number of land and property valuations held either by local religious meeting groups, possibly Quakers, or individuals, dating from the same period as the transcribed book. £300 - £400

400

A late 19th century silver plated spirit kettle having heraldic and floral engraving and mounted on detachable three legged base, 38 cm £30 - £50

401

A George III silver teapot of oval form with fluted body, wooden handle and armorial engraving to lid, together with a matching lockable tea caddy. Hallmarked for London, 1786. Approx weight 1094g £400 - £500

402

An assortment of silver trophies, many being equestrian related. Various hallmarks. Approx weight 254g £50 - £80

403

Two cased silver teaspoon sets together with a silver dressing set. Various hallmarks. £40 - £60

404

A cased set of three silver gilt apostle spoons. Hallmarked for London, 1913. Makers mark for the Pairpoint brothers. Approx weight 207g £80 - £120

405

Three cased silver flatware set to include cake forks, coffee spoons etc. Various hallmarks. Approx weight 186g £40 - £60

406

A silver hallmarked cigarette case having engraved scrolling decoration. Hallmarked for Birmingham, 1892. Approx weight 92g £40 - £60

407

A pair of silver grape scissors of conventional form. Hallmarked for Birmingham, 1987. Approx weight 86g £40 - £60



Lot 401



Lot 408

408

An Edwardian silver cruet set comprising of a mustard, a pair of salts, a pair of pepper pots, two plated spoons and one silver in a fitted case. Hallmarked for Chester, 1907 £50 - £80

409

A silver and guilloche enamel dressing set comprising of four brushes and one mirror, together with a similar comb. Various hallmarks £40 - £60

410

An eastern European 875 silver tray having engraved floral bouquet to centre together with a Russian silver vodka cup hallmarked for Moscow, 1884. Approx weight 277g £60 - £80



Lot 411

411

A military silver compact bearing the Devonshire regiment badge and enamelled regimental colours to front. Hallmarked for Birmingham, 1954. Approx weight 108g £40 - £60

412 - 422

Spare Lots

423

Two silver sauce boats of conventional form, one together with a silver straining spoon. Various hallmarks. Approx weight 208g £50 - £80

424

An assortment of silver and white metal items to include salts, pepper pots, circular photo frame, straining spoon etc. £50 - £80

425

Two cased sets of silver coffee bean spoons together with a cased silver christening fork and spoon set. Various hallmarks. Approx weight 115g £40 - £60



Lot 426

426

A white metal filigree model of a ship housed in a perspex display case. Marked '900', h. 22.5 cm £40 - £60

427

A late 18th century gilt metal pair cased verge fusee pocket watch by John Hart A/F £50 - £80

428

A silver cased fusee pocket watch by H.J Norris of Coventry. Hallmarked for London, 1881.

£40 - £60



Lot 428

429

An assortment of silver items to include a twin handled trophy, a pair of Victorian salts, a pepper pot and a salt spoon.

Various hallmarks. Approx weight 234g

£50 - £80

431

Three George III silver serving spoons together with six George III table spoons. Various hallmarks. Approx weight 373g

£80 - £120

432

An assortment of silver flatware to include, an Irish silver ladle, pusher spoon, teaspoons etc. Various hallmarks. Approx weight 248g

£60 - £80



Lot 429

430

A set of seven George III silver forks together with a similar set of four Victorian silver forks, all with heraldic engraving to handles. Hallmarked for London, 1814 and 1839 respectively. Approx weight 453g

£100 - £150



W&H PEACOCK AUCTIONEERS & VALUERS

Auction Centre & Café open to the public six days a week providing five spacious auction rooms, reception area, offices, meeting rooms, gallery display areas and a fully serviced restaurant. To further enhance the customer experience the Auction Centre has wifi and modern audio visual systems, over 200 parking spaces, excellent loading facilities and is set in landscaped surroundings.

Bedford Auction Centre, Eastcotts Park, Wallis Way, Bedford, Bedfordshire MK42 0PE

Tel: 01234 266366 | info@peacockauction.co.uk

www.peacockauction.co.uk

Valuation Surprises

We hold regular valuation days at our Bedford and Leamington Spa auction centres. These are busy days with clients travelling from far afield asking for advice and testing our knowledge on a wide range of objects.

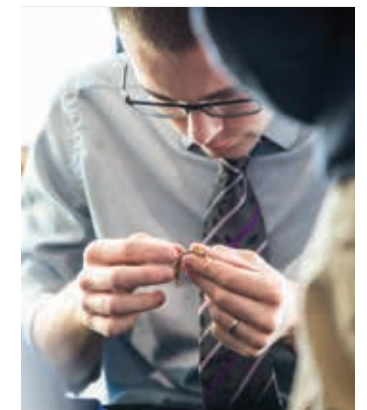


MEMORABLE VALUATIONS FROM LAST YEAR

The medals above were unusual because they were awarded to four brothers who all served in the Second World War. The collection sold for £680.

This 18th century doll was once displayed in a London museum. Consigned at a Valuation Day, it later sold in our specialist Toy Auction for £2,900.

Why not visit our next Valuation Day with your hidden treasures? Who knows what we might uncover!



VALUATION DAYS

BEDFORD

11 January	12 July
25 January	26 July
8 February	9 August
22 February	30 August
8 March	13 September
29 March	27 September
12 April	11 October
26 April	25 October
10 May	8 November
31 May	29 November
14 June	13 December
28 June	

LEAMINGTON SPA

29 January	23 July
20 February	28 August
26 March	24 September
24 April	30 October
28 May	26 November
26 June	

Antique Auctions

These specialist auctions have a worldwide following with bidders from Europe, Asia, the Middle East and further afield competing against those in the saleroom.



RECENT HIGHLIGHT BLACK FOREST CLOCK

This rare early 19th century Black Forest automata and organ longcase clock hit the right note, selling for £4,800 in our Leamington Spa antique sale.



2019 AUCTIONS

BEDFORD

4 January	5 July
1 February	2 August
1 March	6 September
5 April	4 October
3 May	1 November
7 June	6 December

LEAMINGTON SPA

31 January	25 July
28 March	26 September
30 May	28 November

Browse Sales Online

Our antique sale catalogues are uploaded to our websites with images, descriptions and estimates for each lot.

www.peacockauction.co.uk
www.leauktion.co.uk



HIGHLIGHTS FROM 2018

FRENCH BONHEUR DU JOUR

This 19th century French ebony, satinwood and brass mounted Bonheur du jour sold for £3,500.



STUDENT'S VIOLIN

This late 19th century student's violin in a fitted case sold for £2,300.

13TH CENTURY ARABIC POT

Every so often a seemingly innocuous looking item will produce an extraordinary sale result. Discovered during a house clearance, this unassuming Arabic brass and silvered pot raised considerable interest and through live online bidding achieved £16,200 on the hammer.



Jewellery

*If you believe
“diamonds are
a girl’s best friend”
you’re sure to love our
popular Jewellery auctions.*

Sales include watches, rings, sovereigns, bracelets, brooches, pendants, necklaces and more. With estimates ranging from tens to thousands of pounds, we provide the ideal marketplace for your collection.



Did you know?

Buying jewellery at auction is a great way to purchase a stunning piece for yourself or your loved one. Prices tend to be slightly lower than on the High Street and you can also enjoy the thrill and passion of bidding at one of our sales.



2019 AUCTIONS

BEDFORD

1 March 6 September
7 June 6 December

LEAMINGTON SPA

28 March 28 November
25 July

Mid Century Design



*Our Design auctions
last year featured
some bold statement
pieces...*

The new gallery space at the Bedford saleroom has allowed us to display upcoming furniture and pictures for all three branches several weeks in advance, piquing the interest of design enthusiasts and new converts alike.



2019 AUCTIONS

LEAMINGTON SPA

21 February 27 June

BEDFORD

18 May 16 November

ST NEOTS

22 August

Every Week

Our busy salerooms in Warwickshire and Cambridgeshire hold auctions every Thursday.



Our popular weekly auction includes approximately 400 lots of antique & general furniture, household goods, jewellery, tools, modern electrical items and garden equipment.

01926 889 100
info@leauction.co.uk

Leamington Spa

AUCTION CENTRE

2019 AUCTIONS

AUCTIONS

Sale Every Thursday
Commencing 11am

VIEWING

Wednesday 12 noon - 7pm



ENTRIES NOW INVITED

For our next specialist auction of Antiques and Collectable's at the Leamington Spa Auction Centre

AUCTION Highlights



Sherree Valentine-Daines (b.1959),
Cafe a Midi,
signed,
oil on canvas,
34 x 29 cm

Sold for £5200



A late 19th century yellow metal ruby and diamond ring, the central ruby (approximately 1ct) flanked by two approximately 0.5ct diamonds and interspersed with diamond chips. Inscribed inside the shank: 'L.P from W.T 1893'

Sold for £2100

Terms used in this catalogue have the following meanings.

Please note that all statements in this catalogue, regarding authorship, attribution, origin, date, age, provenance and condition are statements of opinion and are not treated as a statement of fact.

- 1. A N ARTIST**
In our opinion, the work is by the artist.
- 2. ATTRIBUTED TO A N ARTIST**
In our opinion, the work is of the period of the artist which may be whole or in part the work of the artist.
- 3. STUDIO, (CIRCLE OR WORKSHOP) OF A N ARTIST**
In our opinion, the work is of the period and closely relates to his style.
- 4. SCHOOL OF A N ARTIST**
In our opinion, the work is by a pupil or a follower of the artist.
- 5. MANNER OF A N ARTIST**
In our opinion, the work is in the style of the artist and is of a later period.
- 6. AFTER A N ARTIST**
In our opinion, this work is a copy of the artist.
- 7. ASCRIBED TO A N ARTIST**
In our opinion, this work is not by the artist, however, previous scholarship has noted this to be a work by the artist.
- 8. SIGNED (OR DATED)**
The work has a signature (or date) which is in our opinion is genuine.
- 9. BEARS SIGNATURE (OR DATE)**
The work has a signature (or date) which in our opinion is not authentic.

HAMMER PRICES - NOVEMBER 2018

1	£ 600	61	£ 260	133	£ 35	255	£ 60	422	£ 270	495	£ 130	560	£ 20
2	£ 160	62	£ 85	134	£ 50	300	£ 160	423	£ 95	500	£ 100	561	£ 110
3	£ 170	63	£ 200	135	£ 100	301	£ 80	424	£ 25	501	£ 150	562	£ 45
4	£ 260	64	£ 85	136	£ 130	304	£ 160	425	£ 65	502	£ 130	563	£ 40
5	£ 170	65	£ 1600	137	£ 80	305	£ 90	426	£ 55	503	£ 70	564	£ 45
6	£ 120	66	£ 60	138	£ 300	306	£ 110	427	£ 70	504	£ 150	565	£ 20
7	£ 170	67	£ 250	201	£ 250	307	£ 210	428	£ 110	505	£ 170	566	£ 600
8	£ 440	68	£ 65	202	£ 70	310	£ 50	429	£ 40	506	£ 140	568	£ 100
10	£ 700	69	£ 55	203	£ 20	311	£ 80	430	£ 35	507	£ 180	569	£ 1100
11	£ 280	70	£ 50	204	£ 115	312	£ 90	431	£ 55	508	£ 60	570	£ 110
12	£ 560	71	£ 50	205	£ 80	313	£ 10	432	£ 60	509	£ 60	571	£ 160
13	£ 300	72	£ 120	206	£ 20	314	£ 130	433	£ 40	510	£ 180	572	£ 110
14	£ 80	73	£ 180	207	£ 50	316	£ 95	434	£ 50	511	£ 130	573	£ 85
15	£ 800	74	£ 60	208	£ 130	318	£ 110	435	£ 65	512	£ 90	574	£ 2100
16	£ 55	75	£ 40	209	£ 80	319	£ 90	436	£ 100	513	£ 260	575	£ 180
17	£ 560	76	£ 60	210	£ 130	320	£ 40	437	£ 45	514	£ 100	576	£ 70
18	£ 700	78	£ 500	211	£ 80	322	£ 110	438	£ 20	515	£ 210	577	£ 170
19	£ 80	79	£ 120	212	£ 65	323	£ 160	439	£ 60	516	£ 200	578	£ 95
20	£ 3400	82	£ 200	213	£ 200	324	£ 40	440	£ 28	517	£ 50	579	£ 45
21	£ 1800	84	£ 50	214	£ 28	325	£ 600	441	£ 120	518	£ 190	581	£ 95
22	£ 160	85	£ 120	215	£ 40	326	£ 65	442	£ 40	519	£ 100	582	£ 380
23	£ 40	87	£ 95	217	£ 80	328	£ 45	443	£ 110	520	£ 28	583	£ 300
24	£ 150	88	£ 100	218	£ 80	330	£ 65	444	£ 70	521	£ 60	584	£ 270
25	£ 60	89	£ 30	219	£ 400	331	£ 90	445	£ 55	522	£ 210	585	£ 55
26	£ 480	90	£ 30	220	£ 50	332	£ 420	446	£ 75	524	£ 220	586	£ 100
27	£ 190	91	£ 45	221	£ 95	333	£ 55	447	£ 55	525	£ 100	587	£ 560
28	£ 50	92	£ 80	222	£ 50	334	£ 230	448	£ 90	526	£ 65	588	£ 200
29	£ 260	93	£ 28	223	£ 130	335	£ 55	449	£ 26	527	£ 85	589	£ 28
30	£ 110	94	£ 30	224	£ 340	336	£ 210	450	£ 110	528	£ 190	590	£ 80
31	£ 1500	95	£ 50	225	£ 65	337	£ 95	451	£ 40	529	£ 70	591	£ 30
32	£ 150	96	£ 70	226	£ 50	338	£ 50	452	£ 200	531	£ 85	592	£ 50
33	£ 520	97	£ 70	227	£ 100	339	£ 85	453	£ 90	532	£ 95	593	£ 50
34	£ 140	98	£ 45	228	£ 50	340	£ 35	454	£ 130	533	£ 160	594	£ 75
35	£ 90	100	£ 30	229	£ 85	341	£ 20	455	£ 580	534	£ 3400	595	£ 75
36	£ 400	101	£ 50	230	£ 150	342	£ 120	456	£ 45	535	£ 70	596	£ 50
37	£ 50	102	£ 65	232	£ 150	343	£ 110	457	£ 320	536	£ 120	597	£ 60
38	£ 210	103	£ 65	233	£ 20	344	£ 120	458	£ 110	537	£ 55	598	£ 80
40	£ 650	104	£ 24	235	£ 50	345	£ 320	459	£ 40	538	£ 35	599	£ 270
41	£ 80	105	£ 30	236	£ 150	346	£ 100	461	£ 85	539	£ 310	600	£ 150
42	£ 50	106	£ 100	237	£ 150	347	£ 15	462	£ 45	540	£ 140	601	£ 150
43	£ 150	108	£ 800	238	£ 70	348	£ 650	463	£ 35	542	£ 220	604	£ 150
44	£ 110	109	£ 35	239	£ 140	349	£ 45	464	£ 50	543	£ 28	605	£ 150
45	£ 65	110	£ 150	240	£ 100	400	£ 26	465	£ 45	544	£ 24	608	£ 90
46	£ 160	111	£ 480	241	£ 100	401	£ 35	466	£ 75	545	£ 130	609	£ 100
47	£ 60	112	£ 500	242	£ 30	402	£ 160	467	£ 50	546	£ 360	610	£ 110
49	£ 65	113	£ 80	243	£ 30	403	£ 45	468	£ 100	547	£ 150	611	£ 100
50	£ 200	114	£ 150	244	£ 40	411	£ 140	469	£ 160	548	£ 120	612	£ 110
51	£ 90	115	£ 5200	245	£ 40	412	£ 70	471	£ 160	549	£ 180	615	£ 50
52	£ 160	116	£ 100	246	£ 80	413	£ 40	472	£ 130	550	£ 180	616	£ 200
53	£ 50	117	£ 140	247	£ 50	414	£ 55	473	£ 80	551	£ 55	618	£ 100
54	£ 100	121	£ 55	248	£ 60	415	£ 160	474	£ 250	552	£ 90	619	£ 5
55	£ 45	124	£ 80	249	£ 40	416	£ 150	475	£ 65	553	£ 20		
56	£ 400	125	£ 55	250	£ 18	417	£ 45	476	£ 120	555	£ 170		
57	£ 290	129	£ 50	251	£ 24	418	£ 65	490	£ 150	556	£ 360		
58	£ 95	130	£ 30	252	£ 24	419	£ 75	491	£ 50	557	£ 670		
59	£ 500	131	£ 520	253	£ 28	420	£ 100	492	£ 300	558	£ 140		
60	£ 85	132	£ 140	254	£ 50	421	£ 95	494	£ 65	559	£ 80		