



Case Study



Customer: Jean Lefebvre (UK) Ltd, Cheshunt, Hertfordshire

Project: New Materials Laboratory

Scope: Conversion and remodelling of existing office space into new materials testing laboratories comprising strip out of existing partitions, lightweight raised access floor and services and then installation of new partitions, heavy duty raised access floor with heavy duty interlocking floor tiles, external double door, decorations, laboratory furniture with stainless steel worktops, fume cupboard, fume extract hood, fume extract arms, fume extraction systems and associated mechanical pipework and electrical wiring.

Value: £124,000

Date Completed: March 2015



Case Study



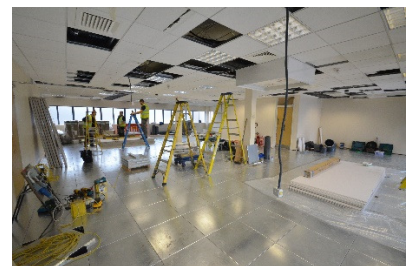
The existing space prior to conversion and remodelling



Existing partitions and raised floor stripped out



Installation of new heavy duty raised access floor



Installation of high level services



New external door



New fume extract systems



Installation nearing completion

SERVICES

Installation and Contracting -
Consultancy and Design -
Project Management - Mail Order -
Safety - Maintenance and Repairs

PRODUCTS

Lab Furniture and Fume Cupboards - Storage Systems
And Lab Seating - Safety Cabinets and Equipment
- Fume Extract and Air Make-up Systems - Mechanical
- and Electrical Services - Building Works and Alterations