

Si-93

MEMBRANE PUMP



Ultraflat pump

Si-93 is a revolutionary patented system fitted with the most advanced Sauermann® technology. Specially designed to handle the condensates from supermarket refrigerated display cabinets, this unique system prevents the formation of Biofilm. The compact, ergonomic design facilitates installation under the low-slung display cabinets.

BENEFITS



- **Sauermann inside® : anti-biofilm system**

- Revolutionary surface treatment: pump and detector do not get blocked.
- Environmentally-friendly solution: no chemicals.
- Increased life-expectancy, Improved reliability.

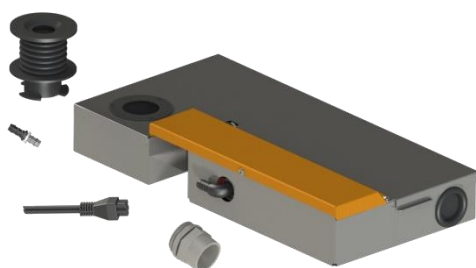
- **Easy installation – easy maintenance**

- “Ultra-flat” profile: tank is only 69 mm high. Ergonomic design.
- Trap function included: control of odours and refrigeration loss.
- 3 inlet points: top, right or left.
- Universal inlet adaptor: 32 – 40 – 50 mm, fast connection / disconnection.
- Adjustable outlet direction: can be turned to left or right.
- Debris collecting basket: for easier cleaning.
- Plug in power cable.
- Easy opening cover: reduces maintenance time.

- **Reduced operation costs**

- Reduced maintenance: preventing the formation of Biofilm reduces the risk of water leak and pump life is increased.
- Stainless-steel construction: excellent impact and corrosion resistance.
- Spare parts management: removable pump compartment = reduced replacement costs.
- Energy-saving: operating time reduced thanks to increased flow rate.

KIT CONTENT



- Stainless steel unit including:
 - Membrane pump.
 - Integral detector.
 - Anti-biofilm system.
- 1.5 m plug in power cable: 2 power wires, 2 safety contact wires.
- Rubber top inlet adaptor int. Ø 32, 40, and 50 mm.
- Through the wall – Female Ø 40 mm side inlet.
- Outlet discharge adaptor Ø 1/2” to 10 mm.

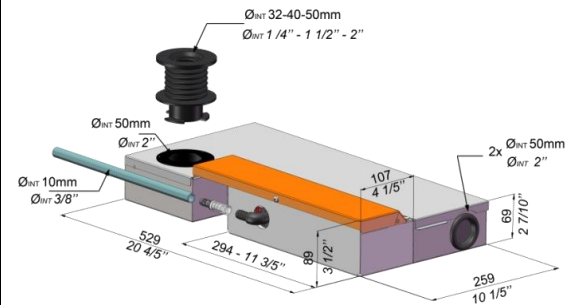
APPLICATIONS

Fresh food (positive temperature) and frozen food (sub-zero temperature) display cabinets.



TECHNICAL SPECIFICATION

Max. flow rate	360 l/h
Max. discharge head	20 m - Flowrate = 145 l/h
Max pressure	30 m - Flowrate = 0 l/h
Sound level at 1m (Measured at Sauermann lab, pump operating with water)	≤ 60 dBA
Mains supply	230 V~50/60 Hz - 60 W – 0.30 A
Detection levels	On: 46mm, Off: 29mm, Safety: 50mm
Safety switch	NO - 8 A resistive - 250 V
Operating conditions	30%: 3s ON – 7s OFF
Protection	IP20
Safety standards	CE and EAC
RoHS directive	Compliant
WEEE directive	Compliant
Pump dimensions	L : 366 x W : 107 x H : 89 mm
Tank dimensions	L : 529 x W : 259 x H : 69 mm
Packaging	6,7 kg – L600 x l 400 x H 120 mm
Masterpack	1 piece



ACTUAL FLOW RATES (l/h)

Discharge head	Total tube length using Ø int. 10 mm, (3/8")			
	5 m	10 m	20 m	30 m
0 m	360	320	290	250
2 m	330	300	270	230
4 m	310	285	255	215
6 m		270	240	200
8 m		260	230	190
10 m		250	220	180
15 m			195	155
20 m			145	105

RECOMMENDED ACCESSORIES



Clear PVC hose
Øint. 3/8" (10 mm) – L : 25m
ACC 00126



Self-sealing fittings
for hose Ø int. 3/8" (10 mm)
ACC 00215 (3 pieces)