

Honeybourne Village News

June 2018



www.honeybourne.org.uk

MWS Aerial & Satellite

Tel 01386 833342

- Freeview
- Freesat
- Radio and DAB
- Additional TV Points
- Additional Telephone Points

Free advice and quotations

CAI Member C. 1559
Member of the Worcester Trader Register

www.mws-aerial-satellite.co.uk

email info@mws-aerial-satellite.co.uk

J&H Gardening Service

Lawn mowing & garden care

For a regular and reliable service

Call or text Jake on
07873592707



Printing, photocopying and scanning.

Booklets, leaflets, fliers, invitations etc.

Black and white and colour.

Contact Claire on 07812 779854
Claire@poore-prints.co.uk

The deadline for the June issue of the Honeybourne Village News is 15th June.

Proposed publication dates for the magazine are the weekends of:

23rd - 24th June

28th - 29th July

25th - 26th August

29th - 30th September

27th - 28th October

24th - 25th November

Please note that these are subject to change.



High street Honeybourne

- Over 14 years' experience in the beauty industry.
- Fully insured with salon hygiene certificate
 - Flexible appointment times to suit all
 - Monthly offers

www.indulgenceskincare.co.uk

07814048166

dermalogica[®]
a skin care system researched and developed by The International Dermal Institute

CND[™] 
Shellac[™]


LASHES[™]
IT'S IN YOUR NATURE


jane iredale
THE SKIN CARE MAKEUP[®]


JESSICA[®]

skinade [®]
better skin from within

dermalogica[®]
expert
C S E

Sienna^x
PROFESSIONAL SPRAY TAN

Letter from the Editor

May saw what was arguably the wedding of the year, when Harry married... Hunee! Yes, that's right, Mr and Mrs Bear finally tied the knot in our very own St Ecgwins's Church.

Supported by nearly 30 children from Class 1 at Honeybourne Primary Academy, Hunee, dressed in a white satin gown and carrying a posy of wild flowers, married long-time beau Harry on Friday 18th May.

The groom and best man waited nervously for a few moments until, to the relief of the 20 or so congregated guests, it was announced that the bride had arrived. Meeting her groom at the altar, Hunee was given away by her father. Reverend Scott Watts presided over a short but moving service with prayers and readings from the children. Music was provided by Class 1, singing 'Touch the Sky' from Brave, and simple, elegant rings (made of purest aluminium foil) were exchanged by the happy couple.

As they left the church the bride and groom were showered with organic, locally-sourced blossom confetti and they posed for the assembled press.

The wedding party returned to Honeybourne Primary Academy on foot where a wedding breakfast picnic was enjoyed by all. It included a chocolate and vanilla wedding cake made by Miss Karen Williamson.



Wedding photos, including the cover picture, by Izabella Stanley.

In other news, thank you for the interest in the pedestrian crossing story. If we can keep the speed down on that road we might get a crossing sooner rather than later.

Don't forget the Honeybourne CycleFest on 10th June too. Rides for all ages and abilities from the Village Hall.

Also, the new community centre has been granted planning permission to be built on the green area of the Grange Farm estate on the Weston Road.

If you would like a digital copy of the magazine please email me.

Claire Poore, Editor, magazine@honeybourne.org.uk 01386 832800

MH Carpentry



Time served craftsman &
qualified teacher of carpentry;
specialising in:

- Decking
- Doors
- Windows
- Flooring- wood / laminate
- Locks
- Fencing
- Roofing
- CCTV installation
- Any projects to do with wood
- Snagger for new builds

No job too small, Competitive prices
Free estimate in local area

Call Matt 07803 608813 / 01386 642885
email matt-henson@hotmail.co.uk

Honeybourne Parish Council News

Election of Chairman

At the May council meeting Cllr David Cowan being the only nominee for Chairman was unanimously elected as Chairman of the Parish Council for 2018-19. This marks the start of his fourth full year in office with Cllr Steve Sidwell being elected once again as Vice-chairman.

Double Yellow Lines:

Pedestrians and road users continue to complain about the inappropriate and inconsiderate parking on the bend at the top of High Street. The highway visibility is totally obscured by parked cars some of which choose to park on the narrow pavement so close to the adjoining wall pedestrians are forced to walk into the road on the very dangerous bend. The request for installing double yellow lines on the bend was declined by the County Highways officer as there are no recorded accidents in the last two years. The Parish Council are not in agreement with the officer's decision and will continue to pursue the matter with Cllr Alastair Adams and the County Highways officer.

Criminal Damage

The portable goalpost on the Recreation Field have regrettably been removed and disposed of following criminal damage caused to the pavilion by two teenagers placing the goalpost in front of the pavilion and kicking a ball through the goal at the building leaving ball marks on the doors and windows. The incident was reported to the local police and the crime No is 704S190418 if anyone have further information on this incident please contact the police or the Parish Clerk.

Mickleton Lane HGV Diversions

After two years of negotiations and waiting Cllr Alastair Adams reported that Gloucestershire County Council has withdrawn the request of the Mickleton Lane HGV diversion orders proposals due to financial constraints. New advisory signage will be installed by Worcestershire County Council, but the advisory signage will not be enforceable, The Parish Councils contribution of £1750.00 toward the scheme will be refunded shortly.

Community Tennis Court

The tennis court in the MUGA on the Recreation Field is fully available for all parishioners to use and is currently free of charge. The tennis net is stored in the metal box near the MUGA and can be accessed by phoning the Clerk on 01789 773 999. Anyone wishing to set up a group tennis event or 5 a-side football event can have use of the new pavilion by arrangement with the Clerk.

New Playground Issues

Parents on the Fair Acre Estate have raised concerns over the lack of suitable play equipment for youngsters on the new estate play area. There are no swings or a slide for young children and safety issues were raised over the site's stone boulder and timber logs. The council will bring these matters to the attention of the WDC playground officer and the sites management company.

The Parish Council meets on the 2nd Tuesday of each month. Members of the public are welcome to attend meetings, which are held in the Village Hall and commence at 7.15 pm. Residents are welcome to speak on any issue of local concern during the Open Forum before the start of the meeting.

Clerk John Stedman

1, Ban Brook Road, Salford Priors, Evesham, Worcs, WR11 8XE Tel 01789 773999:
E-mail: j-stedman@btconnect.com

The Parish Office is open generally all day 10.00 am to 6.00 pm including weekends for all parish enquiries. Email is my preferred communication but my telephone is manned almost all day. The answer phone is on, but please ensure you state your business is with Honeybourne as my phone serves other Councils and my own business.

For up to Date Council information Visit www.worcestershire.gov.uk/MyParish and then link to Honeybourne

Bretforton Garden Club Meeting --- May 3rd

Our new chairman, Mike Cook, was pleased to see so many present at this important club meeting, the last one before our annual Open Gardens. It was nice to see so many new members.

Alison reminded everyone that coaches had been booked and monies were now due for the trips.

Our speaker for the evening was Richard Baldwin, who had been the Senior Crop Production Officer at Pershore Horticultural College. He had a vast knowledge of the commercial expertise needed to grow crops on a large scale in sustainable ways. He talked generally about popular new crops eg. microveg and explained some new methods of growing. Aquaponics is the use of living fish to fertilise the water used on the food crops. Our talk was entitled 'Vegetable Growing in the Small Garden' and he proceeded to show us how to get the best crops in small spaces. His slides of different shaped containers overflowing with abundant crops were amusing and educational. Richard had planted up wellingtons and even his old trousers as well as the more traditional pots and planters. A very enjoyable talk.

We were amazed to see the 'Plant Swap' table overflowing with seeds and healthy young plants and a good buzz of discussion as members engaged in the swapping !!!! A very successful event as all the plants found new homes.

May will be a very busy month for our club as we are preparing for the BRETFTON OPEN GARDENS on Sunday 3rd June. This event promises to be a fun day with many beautiful gardens especially the Bretforton Manor Gardens where refreshments will be available. Take part in a quiz as you wander round the village and watch out for the scarecrows!!

Tickets will be on sale at the Manor and the Ark village shop. Entry price for adults £5..... children go free. Open from 11am til 5pm.

Website....www.bretforton-gardenclub.co.uk

Interested in joining our club ? contact our secretary Barbara Jenman Tel.No. 01789 720514 or barbjenman.bj@gmail.com

Tomlins

Funeral Directors

- 24 Hour Service
- Pre-payment Plans - Fully Guaranteed
- Private Chapels of Rest
- Monumental Masonry
- Modern Jaguar fleet

60 Years of combined staff service to the community

36-37 The Leys, Bengeworth, Evesham

Tel: 01386 765 133

www.tomlinsoftheleys.co.uk



DAVID BAKER

FUNERAL DIRECTORS

- 24 hr Caring Service
- Monumental Stone-masons
- Fully Guaranteed Pre Payment Plans

98 High Street, Bidford-on-Avon

01789 773482

Your Local Funeral Director
Serving the community for over 20 years

www.mylocalfuneraldirector.co.uk





For all your foot care requirements including

Treatment & Advice on

- Routine Nail Trimming • Reduction of Thickened Nails
• Cracked Heels • Athletes Foot • Verrucas
• Removal of Corns • Callus Reduction • Fungal Nail Infection

Contact Jayne on:

Tel: 01789 269541 Mobile: 07956 227021 Email: jayneatfootsteps@gmail.com
www.footstepsfootcarestratford.co.uk

Free Parking

Home Visits Available



Jayne Clarke DipCFHP MPSPract, Foot Health Practitioner
Registered member of the Professional Standards Authority
Accredited Register & the Alliance of Private Sector Practitioners and NCFE



Would you like to cycle but you don't own a bike?

Would you like to cycle but lack confidence?

Would you like to ride on the back of a tandem?

Then H-BUG (Honeybourne Bicycle Users Group) is able to help you.

H-BUG has access to a number of bikes that can be borrowed for H-BUG cycle rides.

There are no costs, and membership of H-BUG is entirely free.

Bikes can be booked in advance by texting request to 07971 989 430

RWH Accountancy Limited

Personal Tax Returns.....From £ 95

Sole Trade Accounts.....From £ 295

Company Accounts.....From £ 495

Other Services: Company Formations, VAT Returns, Bookkeeping, Payroll

Contact Richard: 01386 291007 - richard@rwhaccountancy.co.uk

Corrine's Cleaning Service

- Office cleaning
- General cleaning & tidying
- Laundry & ironing
- light housework
- CRB Checked
- Competitive rates

Call: 07731 866 445 or

Email: corrine.page2@googlemail.com



John Betts
Property maintenance
Brickwork stonework
Repointing
Patios
Painting
Extension and
alterations
25+ years' experience
Free friendly quote
Mob 07415144926
Tel 01386 761379

Thenailandbeautyroom

Salon professionalism without salon prices



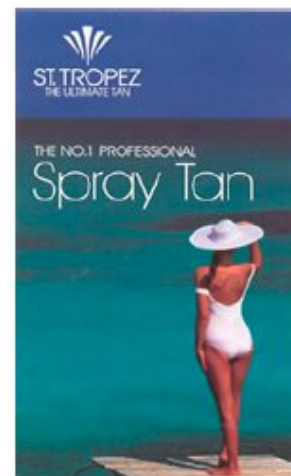
Rose English MGBT

Nail Technician, Professional spray tanning & Beauty therapist



Treatments

ST TROPEZ spray tan
Calgel nails
Clarins facials
Manicures & pedicures
Reflexology
Aromatherapy
Waxing



01386 833842 or 07900876406

Evening appointments available

Every Honeybourne child now has the opportunity to cycle.

The village (H-BUG) has bikes for 6-10 year olds to borrow and also bikes that parents can borrow - all completely free of charge.

There is a short family cycle ride every month on the last Saturday of the month at 2.00pm from the village hall.

Bikes can be booked in advance by texting request to 07971 989 430

**Free Bus To Tesco
Thursdays, 10am
Leaving from Dudley Road.**

HONEYBOURNE HOTEL FOR DOGS®



A 'home from home' for your best friend

We know it can be difficult finding suitable accommodation for your dog which is why we share our love of dogs and our new home in Honeybourne with your best friend to give you peace of mind while you're away

Licensed, vetted and insured - References available - Call or email us to find out more

Tel. Sandra/Jeff: 07957 246 362 Email: info@hhfd.co.uk

Bookings now being taken for 2018/19 (Max. 2 dogs from the same family)

Ironing and Laundry Service

Reliable, top quality service

£12 per hour

Collected and delivered

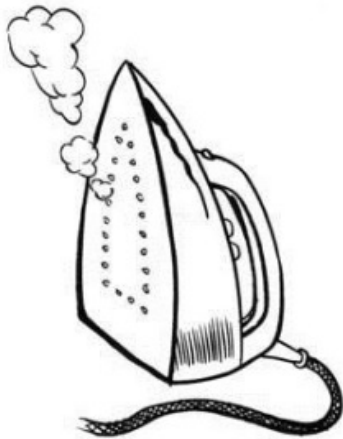
References available

Phone

BEVERLEY

01386 831824

07779 103071



Stratford Electrical Services

Supporting all your home electrical needs, inside and outside e.g. additional sockets, installation of lights, consumer unit (fuse box) changes, full or partial re-wires, extensions, conversions, fault finding etc.

Stratford / Evesham area. Free estimates/quotations

Contact Keith Hoskin:

Tel – 07740 923 424 (M) or 01789 720 970 (H)

Email – keith102060@gmail.com

Registered with -



Evesham Funeral Service

Independent Family Funeral Directors

01386 389585

Craig is available 24 hours a day.
Please call for any assistance.



Golden Charter
Funeral Plans



EveshamFuneralService.co.uk

Hatha Yoga with Nikki

- * Qualified and Experienced Teacher
- * Group and Private Classes
- * Beginners Welcome

Honeybourne Village Hall

Daytime & evening classes
now available.

Stretch * Tone * Strengthen * Relax



Call Nikki: 07484743460
Email: nikki_cook@hotmail.com
Facebook: Hatha Yoga With Nikki



*SUE Mobile Hair
and Beauty*

*Complete Salon-Style Service in
the comfort of your own home.*

*Fully qualified and experienced
hairdresser and beauty specialist.*

*Only professional products used
Wella L'Oreal Jessica etc.*

*Flexible appointments
and personal attention.*

Sue Williams 01386 832152
(Call anytime, but best time is 6 pm)

Professional Freelance Business Support Services
Need someone to look after your Payroll?
Call for further details!

MDB

MICHELLE DENHAM-BAILEY

www.businesssupportmdb.co.uk
07523 011488
michelle@businesssupportmdb.co.uk



Mike Baker

Quality property maintenance
from small works to

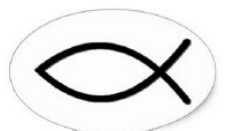
General building and roofing - tile, slate, felt, rubber roof.
Extensions, refurbishments, brickwork, re-pointing,
windows fitted, doors hung, carpentry, patios and
landscapes, barn conversions.

A complete building service

Freephone: 0800-0937-313

Mobile: 0794-0837-546

mikebakergenbuilding.co.uk



10 STUDIOS

Tel: 01386 835 546

OUR FRIENDLY
ENVIRONMENT
FOR YOUR FITNESS

MEMBERSHIPS
RANGE FROM
£19.99
PER MONTH
10 STUDIOS

CREATE
YOUR
OWN **10**

- » 1,200+ SQ FT FULLY EQUIPPED GYM
- » 1,000+ SQ FT STUDIO/CLASSROOM
- » WIDE VARIETY OF FITNESS CLASSES
- » FITNESS ADVICE & PROGRAMMES
- » REHABILITATION & SPORTS MASSAGE
- » FOR ALL AGES & ABILITY

A J HICKMAN ELECTRICAL

E: ajhickmanelectrical@aol.com

As a business our aim is to provide a **high quality** service so our customers receive **top quality** install and satisfaction on the whole service at a very **competitive price**.

- New Build Installs
- Rewires
- Fuseboard Upgrades
- Additional Power Points / Lights
- External Lighting
- Any Aspects of Electrical Work
- Additional BT Points
- Additional TV Points

Electrical Safety
Register

incorporating
ELECSA  ECA
Certification Ltd



TEL: 01386 831258

MOB: 07976 052828



HONEYBOURNE RAILWAY CLUB

Brick Walk, Honeybourne, Evesham, Worcestershire, WR11 5PG
Tel No. 07506 729887

- Hello.
- Forthcoming entertainment at the Railway Club is as follows:
- Saturday June 2nd – Bobby G. Country, Rock'n'Roll, Pop.
 - Friday June 8th – Prize Bingo in aid of the youngsters in Honeybourne Harriers Football Club. 8pm. Prizes most welcome.
 - Friday June 22nd – Prize Bingo for Evesham-based scout group. 8pm.
 - Saturday June 23rd – Night with Diane. Can you sing golden oldies, rock'n'roll etc? Have a go, with our karaoke.
 - Saturday June 30th – live tribute with Joanne Steele as 'Kyle Minough'. £3 members, £5 guests.
 - Saturday July 14th – Rock'n'Roll night and Elvis tribute with Ed Owen. £3 members, £5 guests.

Bingo is held every Friday, prizes and cash alternating each week. Eyes down 8pm.

Thank you for your continued support and help. Best wishes,

Sam Boulter (secretary) and committee.

Prestigious women's cycling event coming to Honeybourne

THE WORLD'S BEST female cyclists will race through Honeybourne this summer when the fourth stage of the OVO Energy Women's Tour takes place in the county on June 16.

In total 17 teams will compete in the 2018 OVO Energy Women's Tour, including four British squads.

The race will come from Weston-sub-Edge heading towards Bidford

Introduction to new service pattern for village magazines

You will notice that the pattern of church services in our villages is changing from the beginning of July. This article aims to explain these changes and the reasons behind them.

Until recently, we've had a full-time priest (the vicar or rector), a part-time curate (a priest in training) and three retired clergy to take the services in our six parishes. As well as this, we have several lay people to help in taking some of the services, but because these people are not priests, they are not allowed to take Holy Communion services.

However, things have now changed. Our curate (Celia) moved to her own Parishes in Sussex last year having finished her training; one of our retired priests (Canon Anthony Harvey) sadly died earlier this year; and the other two are now not well enough to take services. This leaves us with just the one full-time priest (Rev Scott Watts) to take our Holy Communion services, and he can't be in more than one place at a time. It's therefore been necessary to change the service pattern to something more sustainable for the long term. We have developed a new service pattern which tries to be fair to all the parishes.

The new service pattern standardises service times at on 9.00 am and 11.00 am as the times for services on most Sunday mornings, so that Rev Scott can move from a 9.00 am service in one church to an 11.00 am service in another church whilst still having a little time to talk to members of the congregation at the end of the 9.00 am service. We shall also be holding Morning Prayer or Family Services in four of our churches (Pebworth, Dorsington, Honeybourne and Willersey). Whilst these will normally be taken by a lay person, we want to provide for Rev Scott to take these services occasionally on a rotating basis, so each month the aim will be to find a retired priest from outside the benefice to take one of the Holy Communion services so that Rev Scott is able to take one of the Morning Prayer or Family Services.

Some people prefer a service of Holy Communion or Eucharist, whilst others prefer a non-Communion service. We have therefore tried to spread the Holy Communion services across the Parishes so that if there isn't such a service in your own Parish on a particular Sunday, you don't have to travel too far. There will be a Holy Communion service of some kind each Sunday in both the southern half (Willersey, Weston sub Edge and Aston sub Edge) and in the northern half (Honeybourne, Pebworth and Dorsington) of the benefice.

Whilst many people find the use of modern language in our Holy Communion services easier to understand, many others still prefer these services in traditional language or "prayer book" form. These have therefore been distributed across three of our parishes so that those who prefer this form of the service can find such a service on three Sundays in a month.

When there are five Sundays in the month, usually four times a year, we are taking the opportunity to have a joint Holy Communion service for the whole of the Benefice in one of our churches, so that people in the different villages have more opportunity to worship together and to get to know each other better. This Joint Benefice service will move around the churches on a rotating basis, and will be on the fourth Sunday of the month. The services which normally occur on the fourth Sunday of the month will then take place on the fifth Sunday, so the pattern for the last Sunday in the month will always be the same. The one exception to this will be in Willersey, where there is a tradition of a joint service between the Anglican and Methodist Churches on the fifth Sunday: this will continue as before at 9.30 am where possible.

We shall continue to hold Sunday evening services in three of our churches (Pebworth, Honeybourne and Aston sub Edge). Most of these will be Evensong services, but one service a month at Aston sub Edge will be a Holy Communion service in traditional language (prayer book service).

Mary Miller
Sylvia Matthews
Churchwardens, St Ecgwin's Church, Honeybourne



BALLET WITH NIKKI

Starting April 20 at Honeybourne Village Hall

Classes for children (4+) and adults (including all abilities and beginners)

To find out more and to register your interest, please contact Nikki.

Email: nikki_cook@hotmail.com

Tel: 07484743460



Juli

Cognitive Behavioural Therapist

Are you struggling with depression, suffering from anxiety, insomnia, a phobia, do you want to improve your relationships?

Are you looking for a new way to approach life?

Change your thinking, change your life

Let me help you move forward.

Telephone: 07525396094 or email julitwo@live.co.uk for support.

Letter from the Vicar

“We’re all in it together.”

The phrase, ‘we’re all in it together’, is a hackneyed one, misused by politicians and the social elite to suggest that when times of austerity and hardship are upon us, we all walk through such times together. That should, of course, be exactly what happens but often the reality is something quite different.

In the Church, though, it really is true that ‘we’re all in it together’. Every Christian has a unique, special and invaluable role to play in the life of the Church. In May, I attended a special service called an Episcopal Visitation. At the service, the Bishop of Gloucester, Bishop Rachel, admitted those elected to serve as churchwardens to their office. I felt incredibly proud as I witnessed Brian, Mary, Sylvia, Michael, Elizabeth, Peter and Robert take up their appointments for the year ahead. Each one of them had heard God’s call and responded with generous and open hearts and I’m so thankful to each one of them for all that they do to support our parishes, the mission and ministry of God’s Church, and me.

It seems hard to believe that on 28th June, it will be one year since I was licensed by Bishop Rachel to serve as Team Vicar in the Vale and Cotswold Edge Team, with responsibility for the parishes of Aston-sub-Edge, Dorsington, Honeybourne, Pebworth, Weston-sub-Edge and Willersey with Saintbury. I give thanks to God for every day of the past year, for the love, support and warm welcome what you have shown to Ros and to me, and, above all else, for the profound sense that God has amazing plans for our parishes and communities. Your kindness and encouragement have been overwhelming and we love being here with you.

Just like those who will serve as churchwardens in the year ahead heard and responded to God’s call, we also came here in response to God’s call. So, what is God calling you to do? Each one of you has something unique and invaluable to offer in the service of Jesus Christ. It might be spiritual or practical. Only you know what it is. One thing’s certain – without you playing your special part and taking your special place, the Church, Christ’s body on earth, will always be incomplete.

St Paul, writing to the early Christian community in Corinth, puts it like this,

*‘There is one body, but it has many parts. But all its many parts make up one body.
You are the body of Christ. Each one of you is a part of it.’*

1 Corinthians 12: 12 & 27 (ESV)

We would love to come and take your place and play your part. God has called you. How will you respond?

With love,

Scott

Rev Scott Watts, Team Vicar

Rotas for Services – Honeybourne – June 2018
Due to the change in the benefice please check all times/venues during month
with notice board

SERVICE	SIDESMAN	READER	INTERCESSOR	FLOWERS	CLEANING ROTA
Sunday June 3 rd 9.00am Holy Communion <i>Trinity 1</i>	M Edwards L O'Connell Edwards	L O'Connell Edwards	Minister	M Miller	T Banks
Sunday June 10 th 6.00pm Evensong <i>Trinity 2</i>	T Banks	T Banks	Minister	M Miller	S Matthews D Griffiths
Sunday June 17 th 11.00am Holy Communion <i>Trinity 3</i>	M Merrett L O'Connell Edwards	M Miller	M Miller	M Miller	M Miller
Sunday June 24 th 6.00pm Evensong <i>Trinity 4</i>	M Edwards	M Edwards	Minister	C Evans	A Taylor M Hopkins A Banbury

CHURCHWARDENS: Mrs. Mary Miller Tel: 831998
Mrs Sylvia Matthews Tel: 832215

BRASS CLEANING: Mrs M Merrett Tel: 832610
Mrs P Powell

CHURCH NEWS
April/May 2018

Deaths – Mr Ron Hughes

Marriages –

Baptism – Samuel David Abbott

+++++

Dear Friends

Thank you to everyone who donated, helped and came to the Spring Fayre on the 12th May. We raised just under £400 an figure that will help to keep the church running.

If you have any fund raising ideas please get in touch as we are always looking for new ways of getting more people in the village involved and helping with the cost of keeping the church open.

For your diary

Harvest Supper 29th September

Harvest Festival 6th October

Christmas Fayre 17th November

A 6-Mile Circular Walk into Gloucestershire

Flat terrain.

Sturdy shoes or boots are recommended.

Pets should be kept on leads at all times.

Refreshments are recommended. Enjoy a picnic on the way, but do not leave litter.

Start at The Gate Inn, cross the Weston Road (TAKE GREAT CARE) and walk up High Street to the Thatched Tavern. Turn left alongside the Thatched Tavern into China Corner and walk straight on until you pass through the narrow gap opposite, between the houses. This leads onto a cul-de-sac. Follow the footpath straight ahead through the houses until you reach the end of the houses. Turn left and walk around the fenced culvert to the footpath signpost on the Weston Road. TAKE GREAT CARE when crossing this road. This is a very fast road, and visibility is not very good. Over your first stile. This path leads through a woodland area before reaching the next stile. Once over the stile, turn right and follow the edge of the field (headland) to a way-marker post in the corner of the field where you will turn left, continuing to follow the headland.

Across another stile, then continue straight on to the wooden bridge. Cross the bridge and continue along the headland in the same direction until you meet the next wooden bridge with a stile. Just before the bridge you will notice a bench to your right that is a lovely spot to enjoy refreshments (take your litter home) and enjoy the peace and tranquillity of the countryside.

Once over the stile, follow a 2 o'clock direction, to the left of the first telegraph pole, to the metal gate leading onto the bridge. Over the bridge; immediately turn right (notice another seat!) and through the gate to go up onto the bed of the old railway (there used to be ten tracks here). Walk in an eleven o'clock direction and down the other side of the bank to a gate. Enter the field and walk in a one o'clock direction to the far right-hand corner. This field is Poden "Lost Village" dating back to 703 AD when it was granted to Evesham Abbey by Offa, King of Mercia. This field is protected as a DMV (Deserted Medieval Village). It cannot be ploughed or dug in any way. Over the stile and across the Poden Farm driveway, following the track into the next field to the gated bridge on your right. Over the bridge (noting the raised ground to the right that is the site of a medieval overshot mill) and walk around the stables. This field was once a fish pond (constructed in the early middle ages) abutting the brook and producing fish for the Abbott of Evesham. Follow the path along the headland on the left until you reach a stile in the far left-hand corner of this field. Over this stile and then immediately left over a bridge with stiles at each end, and turn immediately right and over the stile into the adjacent field. Walk in an eleven o'clock direction, crossing the drive of Far Poden Farm to reach the gated bridge that leads into Gloucestershire.

Follow the headland on the left of this field, passing over a stile before reaching a kissing gate. Take a one o'clock direction up a short rise. The medieval ponds will now come into sight. Walk straight ahead passing the ancient ponds on your left. Continue to the far left-hand corner of this field to another stile with yellow way-marker (not the gate!); then continue straight on

with the hedgerow on your right until you meet a bridge over the stream on your right. Turn right over the bridge and follow this path to the left, with the hedgerow and stream on your left, for almost half a mile through to the road. TAKE GREAT CARE when crossing the B4632 into the lane almost opposite.

After 50 metres turn right onto the footpath. Another 10 metres and over a stile before following the hedgerow and stream on your left for 200 metres. Over the next stile and 25 metres to another stile tucked away in the left-hand corner of the field. Straight through the orchard, following the stream on your left, and into a private garden; through the metal gates and onto the B4035. TAKE GREAT CARE when crossing this road. Walk along the track opposite, and over the stile next to the large field gate. Then cross the field to the bridge in the hedgerow opposite – next to the first large tree to your left. Straight ahead across the field to the next stile; over the stile and stream, and straight ahead to the next stile; over this stile and turn left to walk 30 metres into the corner of the field, noting the WW11 air raid shelters for WRAF serving at Honeybourne airfield. Turn right and follow the headland to the next stile. Walk straight ahead along Dover's View and then down the public footpath, close to the field edge, to the road. Turn right along Church Street and follow the road to the junction with the main road (B4632), noting the "1857" and fire insurance seal above the double barn doors. TAKE GREAT CARE when crossing this road to the drive opposite. Follow this drive until you reach the stile on your left. Over the stile and follow the way-marker direction through this field until you reach a stile leading into woodland. Through this woodland and over a bridge into the next field. Turn right and, keeping the brook and headland on your right, pass over two more stiles to reach the dilapidated sheds. Walk ahead with the new plantation on your right until you reach a field gate. Through this gate and immediately turn left through this plantation until you reach a gate leading onto the disused railway (Honeybourne line to Cheltenham).

Over the stile on the opposite side, re-entering Worcestershire, and straight ahead, still with the brook on your right until you reach the next stile in the far right-hand corner of the field. Over the stile and, keeping the brook on your right, walk straight ahead until you reach the driveway to Longstretch Farm. Over the bridge to continue to follow the brook on your left. This path takes you through a beautiful private woodland garden. Through the gate and straight ahead to the next stile. Continue with the brook on your left over two more stiles until you reach the drive to Weston Fields Farm. Turn left for 50 metres to meet the Weston Road. Turn right ensuring you walk on the grass verge facing the traffic for 130 metres until you see the field gate and stile on the opposite side of the road. TAKE GREAT CARE crossing this very fast road. Over the stile and, keeping the hedgerow on your right, walk the length of this field. Turn right over a footbridge and follow this path along the headland until you rejoin the path into China Corner. Retrace your steps back to the Gate Inn.

We hope you have enjoyed your walk today, and that we have whetted your appetite for a variety of future walks in and around the Parish of Honeybourne.

Email steve@stephenbullen.com for copies of any walks, to express concerns, or seek advice on how to best enjoy Honeybourne's Rights of Way.

Church Services - June 2018

	Pebworth	Dorsington	Honeybourne	Willersey	Weston sub Edge	Aston sub Edge
3rd June Trinity 1	11.00 am Holy Communion (Modern Language)		9.00 am Holy Communion (Traditional Language)	9.30 am Holy Communion (Traditional Language)	11.00 am Holy Communion (Modern Language)	6.30 pm Evensong
10th June Trinity 2	10.00 am Family Praise	11.00 am Holy Communion (Modern Language)	6.00 pm Evensong	9.30 am Holy Communion (Modern Language)		6.30 pm Evensong
17th June Trinity 3			11.00 am Holy Communion (Modern Language)	11.00 am Family Service	9.30 am Holy Communion (Modern Language)	6.30 pm Holy Communion (Traditional Language)
24th June Trinity 4	6.00 pm Evensong	11.00 am Holy Communion (Modern Language)	6.00 pm Evensong	9.30 am Holy Communion (Modern Language)		6.30 pm Evensong
1st July Trinity 5	11.00 am Family Praise		9.00 am Holy Communion (Traditional Language)	9.30 am Holy Communion (Modern Language) Joint Service for St Peter with the Methodists	11.00 am Holy Communion (Modern Language)	6.30 pm Evensong

FILL THE FRAME

All your picture framing needs.

Specialist in framing sport, film, TV and music photos and memorabilia. Wedding collages made to order.

Phil Rainey

45, School St, Honeybourne

Tel. 01386 833505

07969 620555

CPB PLASTERING

All aspects of plastering work:

Boarding, skimming,

rendering, screeding

Call CARL BENFIELD

Tel 01386 831673 or

07717 201 950

email c-benfield@sky.com

Honeybourne Wednesday Club is running the following programme of coach trips in 2018:

12th June: Devizes and Marlborough
27th June: Hatton Country Park
15th August: Lichfield
12th September: Weston-Super-Mare
17th October: Cadbury's World
14th November: Banbury
12th December: Worcester

If you would like to join us on a trip, or for more information, please contact Anne Innes on 831681 or Win Russell on 47469. The standard coach fare for all trips is £10, and the coach picks up at Honeybourne Village Hall, Grove Avenue, Westbourne and Dudley Road.

Interested in hiring the Village Hall?

Go to our website www.honeybournevillagehall.org and click on bookings, or ring Rita on 01386 640696 about regular bookings and Sylvia on 01386 832215 about one-off events

COME AND JOIN US!



HONEYBEES W.I.

Honeybourne Village Hall, Bretforton Road, Honeybourne at 7:30 pm.

Future meetings:-

Monday June 18th An Art Workshop with Penny.

This will be a still life demonstration

with plenty of time to have some fun practicing afterwards

Our competition will be: Flower arrangement in a jam jar

Find out more on :-

Facebook honeybeeswi.

www.honeybeeswi.wordpress.com

or if you want to contact Honeybees W.I

honeybeeswi@gmail.com

You will be made to feel very welcome



Leadership & Management Development Consultancy

- Leadership & management training
- Executive coaching

"Zoe has just completed a very successful management programme across our entire business. Feedback has been consistently positive and this reflects well on this consummate professional who needless-to-say comes highly recommended."

Resourcing and talent manager

"I attended a series of training sessions run by Zoe, complemented by a couple of coaching sessions. Zoe's approach is very warm and inclusive, and she works hard to help her delegates get the most out of their training. I found the coaching sessions with Zoe invaluable; her insightful guidance was just what I needed to help me work through some challenging workplace scenarios."

I.T. Leader

zoe@harvardlewis.co.uk

07977 229059

www.harvardlewis.co.uk

HONEYBOURNE WEDNESDAY CLUB

The May meeting of the Wednesday club met on the 2nd of the month when 30 members attended. Birthday cards were distributed before the secretary read the minutes of the April meeting. Matters arising: the trip to Redditch was cold and windy.

The next trip out was going to Bourton on the Water, just half a day leaving at 11.30 from Honeybourne on Wednesday 9th May. Anne then addressed the meeting regards the trips in June especially the one on Tuesday 12th which was originally proposed for Devizes and then onto Court Gardens. A show of hands proved the alternative to be more popular. The trip will now go to Devizes and then onto Marlborough. Hatton Country Park on Wed 27th remains the same. This is a half day trip leaving at 12 noon.

Entertainment was Chris Johnson with REIKI an energy therapy to aid relaxation and reduce stress. Numerous ladies took part in the exercise starting with Maureen whose 70th Birthday it was. As it was her birthday she had provided the refreshments sandwiches and cream tea for the occasion. The refreshments were in the hands of Fiesta Caterers.

The meeting for June will be held on the 6th when the entertainment is Prof. Colly Wobbles. Why not come along for an entertaining social afternoon followed by the usual tea and cake.

The trips, and days out are open to non members if seats are available. Why not get in touch with Anne on 831 681 and book? Most of them cost just £10.00 to be picked up and dropped off in the village.

Honeybourne CycleFest Sunday 10th June

A warm welcome to ALL cyclists

**H-BUG (Honeybourne Bicycle Users Group) will run
this annual event with cycle rides throughout the day:**

Start: Honeybourne Village Hall

- 07.00 A 15-mile "wake-up" cycle ride.
- 08.30 A 10-mile cycle ride.
- 10.00 A short cycle ride for all the family.
- 11.00 A 27-mile cycle ride up into the North Cotswolds.
- 14.00 A 15-mile cycle ride.
- 16.00 A family off-road cycle ride.
- 18.00 A cycle ride to The Fleece Inn, Bretforton.

Honeybourne Neighbourhood Development Plan Group

Would like to invite all residents who live in the
Parish of Honeybourne to an open event at the
Honeybourne Village Hall On;

Saturday 7th July 2018

and

Sunday the 8th July 2018.

From 12:30 to 4:30pm each day

In October last year we asked your opinions on a range
of topics on how you would like to see
Honeybourne develop in the future.

The Topics ranged from Housing, Green spaces, Views,
Connections, the Environment and Community facilities.

From the results of that survey we have started to build
the Honeybourne Development Plan. The first part of the
plan covered is Housing and Green Spaces.

We now need to share this information with you for your
comments and aspirations.

On the above dates there will be members of the NDP
Committee available to discuss the display boards which
will show the work done on Green spaces and Housing.

Please come along we welcome open and
constructive comments from the Community.

This is your plan so come and have your say!

Light Refreshments will be available.

We look forward to meeting you.

www.honeybournendp.org

Merstow Green

FUNERAL HOME

YOUR LOCAL INDEPENDENT FUNERAL DIRECTORS



Kevin Bowen

Carol Phillips DipFD

Philip Tomlins DipFD

- Experienced Funeral Directors on hand 24 hours
- Committed to providing the highest level of bereavement care
- Professional guidance and comforting support throughout
- Pre-paid funeral plans to offer peace of mind and financial security

Call any time



01386 49903



Merstow Green Ltd, 20 Merstow Green, Evesham, Worcestershire WR11 4BD

www.MerstowGreen.co.uk

SportHoneybourne

www.sporthoneybourne.org.uk is the website where you can quickly find your favourite sports and exercises.

Local clubs and classes are all listed, so you have direct access to view their activities. Also, the latest national news feeds are available here for most popular sports.

Is your particular interest Walking?

If so, enter the website and select “Other”, and then select “Walking”.

Or is it Gymnastics?

If so, enter the website and select “Other”, and then select “Gymnastics”

Anything missing?

What will you do today?

Maybe set a Personal Best (PB), however short or slow. We can all do just a little more to improve our health and fitness.

Need help or support? Contact Steve who will be only too pleased to help in any way.

www.sporthoneybourne.org.uk

BRETFORTON OPEN GARDENS and Plant Sale



Sunday 3rd June

11.00am to 5.00pm

A beautiful variety of gardens including cottage gardens, modern gardens with features, a Peace garden & the stunning grounds of Bretforton Manor.

**Refreshments, plants for sale & Tombola at
The Manor plus other attractions.**

**Take part in a quiz as you wander around the village
and watch out for Scarecrows!!!**

Tickets on sale at Bretforton Manor and the Ark Shop, Main Street,
Bretforton WR11 7JH

A share of proceeds will go to:

The Shakespeare Hospice & DePaul-NIGHTSTOP Charity



Check out our website:

www.bretforton-gardenclub.co.uk

HONEYBOURNE MOVIE NIGHTS
PRESENTS

DARKEST HOUR



(Certificate PG - parental guidance needed as some material may not be suitable for children)

Starring Gary Oldman as Prime Minister Winston Churchill in this thrilling and inspiring true story of World War II

Honeybourne Village Hall
on Saturday 9th June 7.30pm
Doors Open 7.00pm

Funds raised will go towards the new Village Hall

Tickets cost **£3.00** per person.

Light refreshments including ice cream available

Secure your seat for any of our screenings by emailing Heath Jobs on heath.jobs@hotmail.com

or ring Rita on 01386 640696

or find out more at

www.honeybournevillagehall.org

Pilates

Promotes a strong core and spine, increases flexibility and mobility and develops lean toned muscle.

Classes are suitable for complete beginners - advanced. Small friendly classes.

£6 per session or discounts available for block bookings. All equipment provided.

Mon 9.45am Badsey Remembrance Hall

Tues 6.15pm Bengeworth School

Weds 7.45pm Harvington Baptist Chapel

Thurs 9.30am Harvington Baptist Chapel

Friday 7.00pm Littleton Village Hall

Trigger Point Pilates

A class created to help alleviate chronic pain and undo muscular restrictions within the body. Using myofascial release techniques this class will restore fascia health and help rid those tight muscles of restrictive trigger points. This class enables the body to move freely and cope with its functional requirement. No fitness level required. This class attracts all, from the elite fit to the post rehab.

£7 per session.

Tues 7.15pm Bengeworth School

Thurs 10.30am Harvington Baptist Chapel

Friday 6.00pm Littleton Village Hall

Call Michele to secure your space - 07813 084575

Booking essential.

H-BUG

Cycle rides in Honeybourne

Everyone is welcome.

June 2018 is a very special cycling month in Honeybourne

Saturday 2nd June	Aspire to cycle 20 or 40 miles 2.00pm at Badham Motors
Sunday 10th June	Honeybourne CycleFest 2018 Rides start from the Village Hall Evesham Wheelers Audax rides from Village Hall
Saturday 16th June	The Women's Tour races through Honeybourne 12.00 Weston-sub-Edge to Bidford
Saturday 7th July	Challenge Hills cycle ride 2.00pm at Badham Motors
Saturday 21st July	Family cycle ride 2.00pm at the Village Hall
Saturday 28th July	Aspire to cycle 10 or 20 miles 2.00pm at Badham Motors

Slimming World Honeybourne



Warm, friendly group
that meets each
Thursday at
Honeybourne village
hall.

5pm or 7pm

For more details call
Julie 07511518445 or
just pop along.

slimmingworld.co.uk
0344 897 8000





the Fleece Inn

The Cross, Bretforton, Nr. Evesham,
Worcestershire WR11 7JE

Tel: 01386 831173

Email: info@thefleeceinn.co.uk

www.thefleeceinn.co.uk

Charity Bikers' Nite

Wed 30 May, from 7pm, free entry

St Leonard's Asparagus Auction

Sun 3 Jun, from 6:30pm, free entry

Vale of Evesham National Morris Festival

Sat 23 Jun, from 11am, free entry

Outdoor Shakespeare: Romeo & Juliet

Thu 28 Jun, 7pm, £15 (U-18s £10) Advance

Join the Moongazing Hare Bars team -our outdoor bars team are
recruiting for festival and event bar staff

Contact info@thefleeceinn.co.uk for more info

Food served: Monday to Saturday 12pm-2.30pm & 6.30pm-9pm

All day Sunday 12pm to 8pm

CAMRA Shakespeare Branch Pub of the Year 2018 (Worcestershire area)

National Pub & Bar 2018 County Winner

For more events and our current menu see www.thefleeceinn.co.uk

Phone: 01386 831173 Email: info@thefleeceinn.co.uk





Your local friendly garage

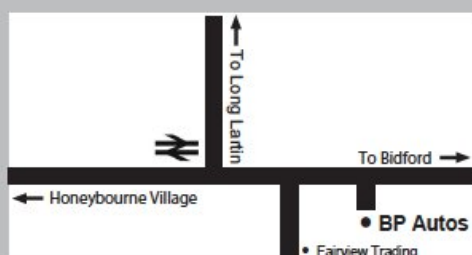
**For Servicing and Repairs to all Vehicle Makes
Cars to Light Commercial Vehicles**

**Batteries • Tyres • Exhausts
Wheel Balance • Wheel Alignment
Diagnostics • Puncture Repairs
And Much More!**

**Give us a call or drop in and see us.
We are here to help you safely on your journey.**

T: 01386 832157

**The Old Brickworks
Buckle Street
Honeybourne
Evesham WR11 8QE**



Opening hours

Mon to Fri: 8am - 6pm

Sat: 8am - 1pm

**Members of HONEYBOURNE PARISH COUNCIL:
2016 - 2019**

David Cowan(Chairman)	01386 831801
Andrew Attridge	01386 830744
Heath Jobes	07736 168736
Matt Henson	07803 608813
Colin Clear	01386 831804
Graham Clelland	01386 832500
Sandra Walsh	01386 834712
Steve Sidwell	01386 834783
Richard Chivers	01386 830272
Graham Taylor	01386 832008
Cathryn Steward	01386 833278
Clerk to the council, John Stedman	01789 773

LADIES!

**Walking Keeps You
Fit.**

**Join our walking group
and make new friends.**

**We do a two-mile walk
on Monday,
Wednesday and Friday
mornings.**

**For more information
call Ann on 01386
830517**

**We look forward to
seeing you.**

HONEYBOURNE VILLAGE HALL

**LIVING FITTER
LIVING HAPPIER**

FITNESS PILATES
MONDAYS @ 12.30-1.30
TUESDAY'S @ 6-7PM
Anyone welcome
Whole body conditioning
Toning, core stability and
flexibility
Weight loss and fitness
Improved well-being.

**FITNESS IS NOT
ABOUT BEING
BETTER THAN
SOMEONE ELSE...IT'S
ABOUT BEING
BETTER THAN YOU
USED TO BE.**



**LIVING LONGER &
STRONGER CLASSES**
MONDAY'S @ 12.30-1.30

Designed for over 50's.
Recommended by GP's &
Physio's

CALL CLAIRE 07554 192 487

CLAIRE_OLDROYD@MAIL.COM

UNIFORMED ORGANISATIONS

1st Honeybourne & District Scout Group consists of:

BEAVERS

Beavers meet on a Wednesday evening at Honeybourne First School from 6.00pm to 7.15pm, for boys & girls aged from 5yrs 9mths to 8 yrs

Contact: Sally Perkins 01386 833915

CUBS

Cubs meet on a Wednesday evening at Honeybourne Village Hall from 6.30pm to 8.00pm for boys & girls aged from 7yrs 6 mths to 10 yrs 6 mths

Contact: Jayne Richmond on 01386 831515

SCOUTS

Scouts meet on a Thursday evening at Pebworth Village Hall from 7.30pm to 9pm for boys & girls aged from 10 yrs to 14 yrs

Contact: Lynn Clements on 01386 833238 or 07950 791610

SEA CADETS

Evesham Sea Cadets and Marine Detachment

meet Monday and Thursday evenings every week at 7.00pm until 9.30pm for young people aged between 10 years to 18 years.

For further information please email: aoevesham@gmail.com or ring us on a parade night on 01386 833383.

Useful contacts:

Village Hall Lettings Secretary, for regular bookings call Rita on 01386 640696 or Sylvia on 832215 for one-off events

Honeybourne Sport and Recreation Field - John Stedman, Tel 01789 773 999

Mobile Library Time Table: Library visits on the 4th Friday of the month.

Grove Avenue:	12.05 - 12.20	Lower Westbourne:	12.25 - 12.40
Perrie Drive:	12.45 - 1.00	Weston Road:	1.05 - 1.15
	LUNCH	Village Hall:	1.45 - 2.00

Honeyangels

Honeyangels meet every Tuesday at 10am in the church. We have a few songs, a story, a collection, a drink and cake while the children play with toys and mums or dads chat.

For more information contact Sylvia Matthews on 01386 832215

Community Transport

Are you having difficulty getting to the Alexandra or Worcester Hospitals for appointments? There is now a pilot scheme called Community Transport Connections, which can help patients who are eligible because of mobility limitations or who have no other means of transport available.

For more information or to register for this service, you will need to call 0300 3239965, Mon-Fri 9am-4pm. Once registered, you will be able to use this service, provided by Volunteer drivers in cars. There is a charge for each journey.

The scheme covers all rural and urban areas in Evesham, Pershore, Worcester, Droitwich and Redditch. Community Transport to hospitals wider afield (i.e. Birmingham) is also available (often much cheaper than a taxi) and transport to GP and Dental appointments, shops, visiting friend and relatives is also provided. Again, there is a charge for each journey. These journeys can be booked by calling the numbers below.

Worcester Wheels – 01905 450654

Pershore Volunteer Centre - 01386 554299

Evesham Volunteer Centre – 01386 40165



Home is where
the care is

Home & live in care from
Bluebird Care

Find out more about home care and the
difference it can make to your life.

Email the Bluebird Care team:
worcesterandwychavon@bluebirdcare.co.uk
or call us on 01386 764830
bluebirdcare.co.uk/worcester-wychavon



bluebird
care

HAYYOGA

The best of Vinyasa Yoga Classes now found in **your local** village halls
Every 'body' is welcome, from complete beginners to full time Yogis.

Private classes also available!

2018 Class Schedule

Every Thursday

7.00am – 8.00: **Honeybourne Village Hall**, with Charlotte
Morning Power Vinyasa Yoga

Every Sunday

17.00 – 18.00: **Broom Village Hall**, with Charlotte
Slow Flow for all levels

Every Wednesday

10.00am – 11.00: **Salford Priors Village Hall**, with Charlotte
All levels Vinyasa Flow

Prices

Drop-in Class - £9

10 Class Pass - £70

Private Classes - £50/hour £65/90mins

Under 21's / Students - 5 Class Pass for £25

Your First Class is 50% OFF!



FOLLOW US ...



HayYogaClasses



HayYogaClasses

Contact Charlotte direct on 07864058203; hayyogaclasses@gmail.com

Honeytots Parent and Toddler group

welcomes new people

Wed. 9.15-11.30am term time at Honeybourne First School Hall
£2 per family, snack included

We are aimed at toddler ages but babies are also welcome.

Find us on Facebook- Honeytots

Contact Nicky Hope and Natalie Gaffney

SHORT MAT BOWLS

If you enjoy watching, and perhaps marvelled at the skill of the professionals performing on T.V. why not come along to the Village Hall on Friday evenings (7.30) and have a go yourselves at a somewhat simpler version called Short Mat Bowls.

All equipment is provided the only thing we ask that you wear flat shoes. Trainers etc. are ideal. The cost is £2 per session.

ADVANCED BOOKING CARS

ABC Private Hire of Honeybourne

Call Thomas on

07752 640352 / 01386 834028

www.abcprivatehire.co.uk

Any Destination, Any Time or Day Hire
Airport, Rail, Coach & Sea Port Connections
Meet and Greet Service

BADHAM MOTORS

Stratford Rd. Honeybourne Evesham.

Tel: 830307

MOTOR ENGINEERS WHO CARE
ALL TYPE OF VEHICLE REPAIR
SERVICING/M.O.T.

CLASS 3.4.7.

QUALITY USED CARS ALWAYS
AVAILABLE

Working for your home



3 Counties Cleaning and Ironing

Call Now

07805189422

Info@3countiescleaningandironing.co.uk
www.3countiescleaningandironing.co.uk



For all your craft and
sewing needs

No job too big or too
small!

Ring Shirley on 07957 620237
or email craftandsew4u@yahoo.co.uk

craftandsew4u.co.uk

Evergreen Garden Maintenance

Mowing Hedge Cutting

Tree Pruning, Turfing Etc:

No job too small References available

Garden Clearance Service

FOR A FREE QUOTE

Please Phone Tony

T: 01386 854797

M: 07752 613814



To advertise in the Honeybourne Village News or to
contribute to the magazine, please contact Claire Poore
at magazine@honeybourne.org.uk
or phone 01386 832800

CLAREMONT CARS

PRIVATE HIRE SERVICE

From Bidford & Honeybourne

We offer a professional door to door service by appointment
24 hours a day, 7 days a week.

Serving South Warwickshire, the North Cotswolds and the Vale of Evesham,
we cover all locations, both locally and throughout the U.K.

Estate Cars and people carriers up to 8 seats are available.
We specialise in meet-and-greet facilities at all major UK Airports.
Sample discounted rates (at 1st January 2016) including up to four
passengers (supplement applies for people carrier):

BIDFORD OR HONEYBOURNE to

	From		From
Birmingham	£65	Bristol Airport	£105
Heathrow	£130	Luton Airport	£140
Gatwick	£155	Stansted	£155
Manchester	£140	Southampton	£140

Please enquire for rates from your local area or for any other destination.

FOR THE BEST IN PRIVATE ~HIRE

CALL NOW ON:

01386 833660

Philip Hickson – 53 Stratford Rd, Honeybourne,
Evesham. WR11 7PP

E-mail: info@claremontcars.co.uk

Website: www.claremontcars.co.uk