

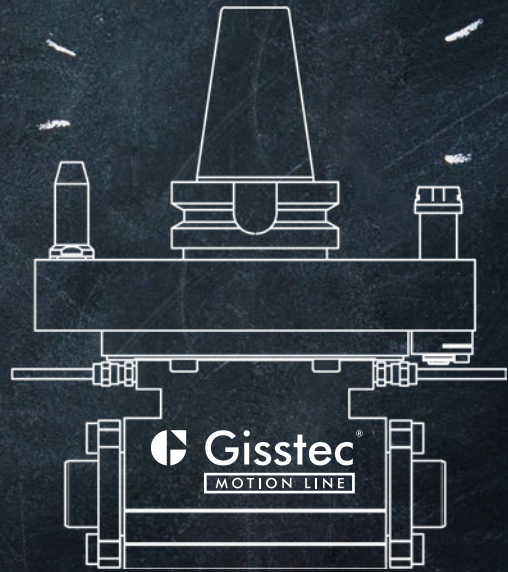


NUTSTOßEN UND VERZÄHNUNG
SLOTTING AND GEAR CUTTING



WINKELKÖPFE

LEISTUNG
GENAUIGKEIT
KRAFT
PRODUKTIVITÄT
BELASTBARKEIT



GA Serie
90° Festwinkel

GA-L Serie
Verlängert

GT Serie
Schwenkkopf

GA-X Serie
ISO40 Ausgang

GS Serie
Schmale Bauform

GD Serie
Doppelausgang

GA Serie
90° Right Angle

GA-L Serie
Extended

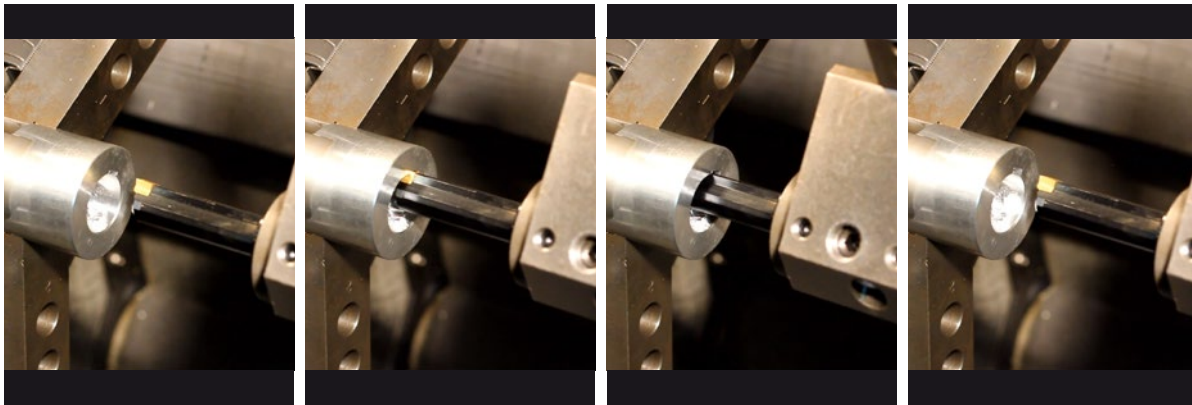
GT Serie
Tilting Head

GA-X Serie
ISO40 Output

GS Serie
Slim Head

GD Serie
Double Output

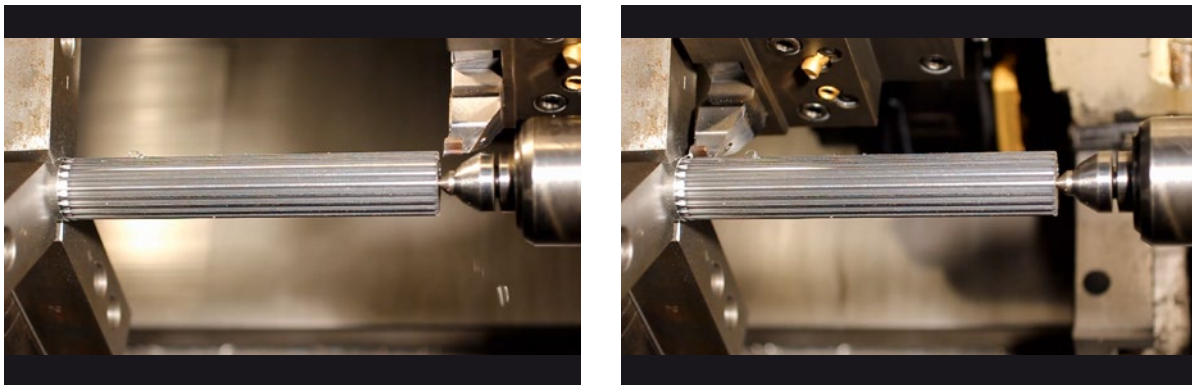




Nutstoßwerkzeuge

- ▼ Ideale Lösung für Nutstoßen auf Bearbeitungszentren und Drehmaschinen
- ▼ Werkzeughalter aus gehärtetem Werkzeugstahl
- ▼ Plattensitz gehärtet: 58-60 HRC
- ▼ Ø3,5 Bohrungen für Kühlmittelzuführung
- ▼ Sonderwerkzeuge kurzfristig lieferbar auf Anfrage

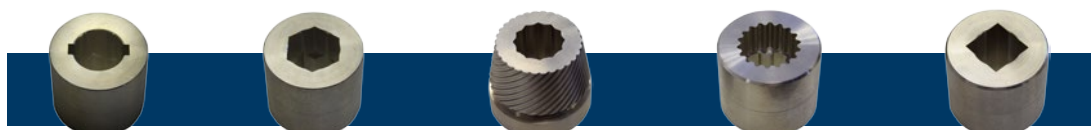
Alle
Katalogartikel
ab Lager
verfügbar



Slotting Tools

- ▼ *Ideal solution for slotting on CNC Turning and Milling Machines*
- ▼ *Made of hardened tool steel*
- ▼ *The seat of the insert is hardened at 58-60 HRC*
- ▼ *Ø3.5 mm holes for forced-feed lubrication*
- ▼ *Fast delivery for special tools upon request*

All
Catalog Items
available in
Stock



Längsnut
Keyway

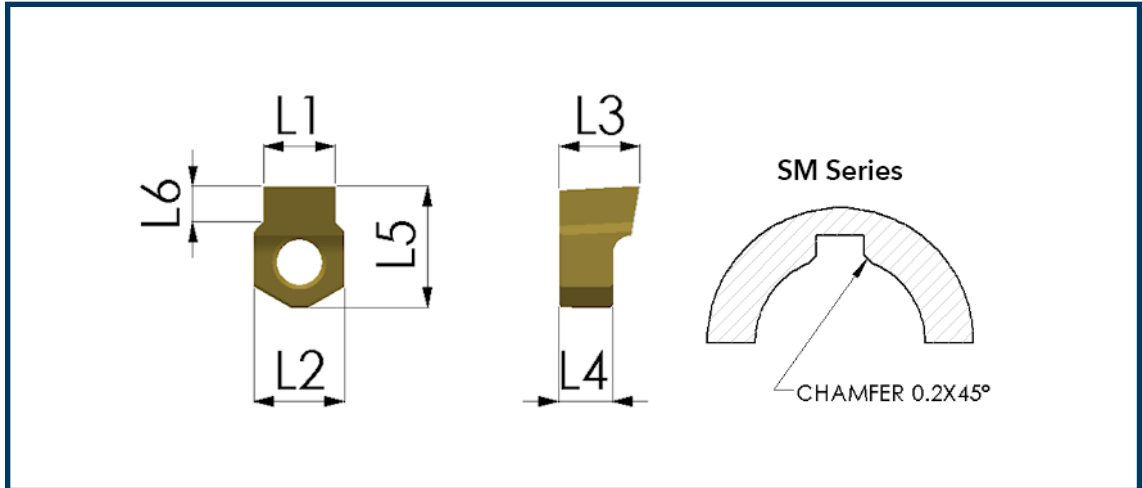
Sechskant
Hexagon

Spiralförmig
Spiral

Verzahnung
Spline

Vierkant
Square



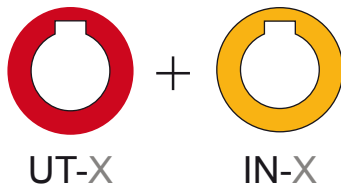


Platten

- ▶ Gesinterte HSS-Legierung mit Cobalt
- ▶ Höhere Leistung als Hartmetall
- ▶ Härte: 72 HRC
- ▶ TIN beschichtet
- ▶ Mehrmaliges Nachschleifen möglich
- ▶ Sonderwerkzeuge kurzfristig lieferbar

Inserts

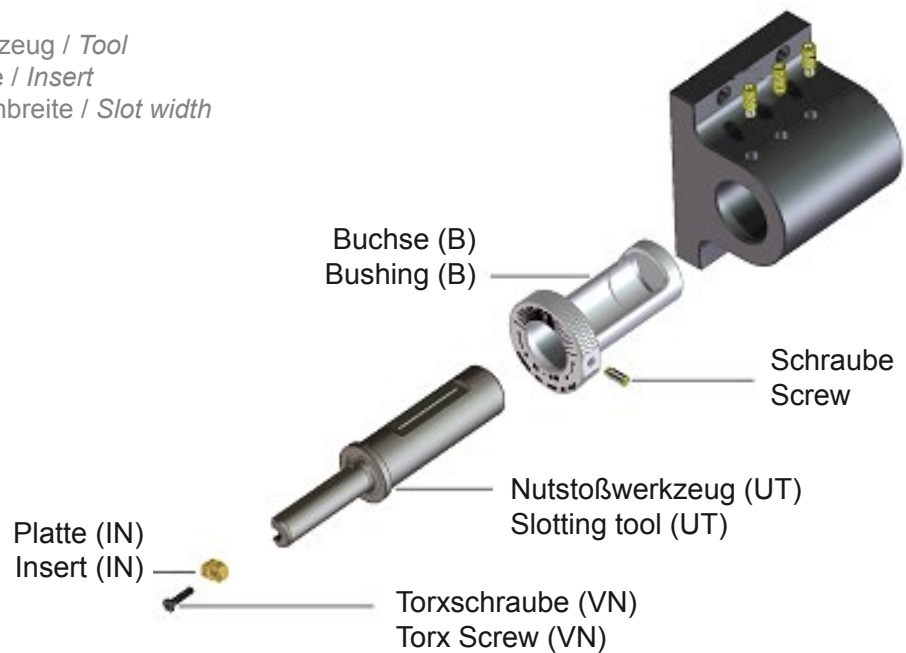
- ▶ Sintered HSS alloy with cobalt
- ▶ Performance superior to carbide
- ▶ Hardness: 72 HRC
- ▶ TIN coating
- ▶ Can be sharpened several times
- ▶ Fast delivery for special tools

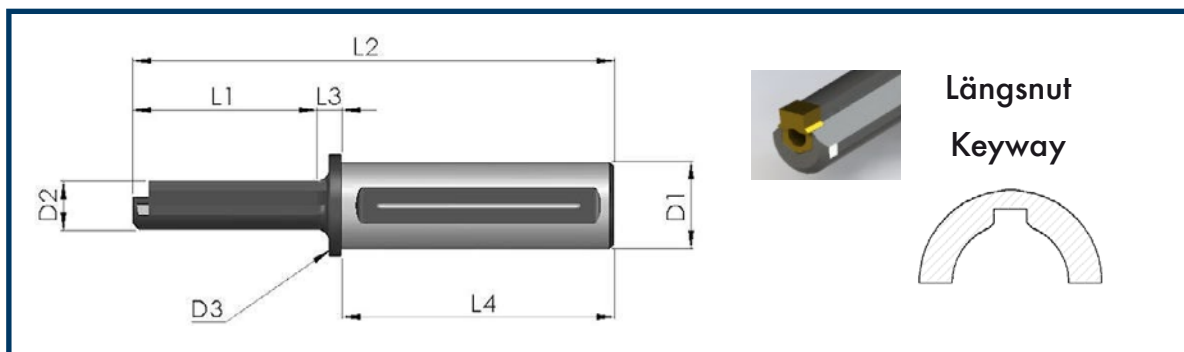


UT-X

IN-X

UT Werkzeug / Tool
IN Platte / Insert
X Nutenbreite / Slot width





Längsnut
Keyway

CODE	L1	L2	L3	L4	D1	D2	D3	P	T	V	Min Ø
UT-02-25	25	124	9	90	25	6,5	30	PN-1	T08	VN-1	7
UT-02-25-L	34,5	133,5	9	90	25	6,5	30	PN-1	T08	VN-1	7
UT-03-25	30	129	9	90	25	8	30	PN-1	T08	VN-1	8,5
UT-03-25-L	40	139	9	90	25	8	30	PN-1	T08	VN-1	8,5
UT-04-25	40	139	9	90	25	10	30	PN-1	T08	VN-1	10,5
UT-04-25-L	56	155	9	90	25	10	30	PN-1	T08	VN-1	10,5
UT-05-25	46	145	9	90	25	12	30	PN-1	T08	VN-1	12,5
UT-05-25-L	66	165	9	90	25	12	30	PN-1	T08	VN-1	12,5
UT-06-25	56	155	9	90	25	16	30	PN-2	T15	VN-2	16,5
UT-06-25-L	81	180	9	90	25	16	30	PN-2	T15	VN-2	16,5
UT-08-25	68	162	9	90	25	20	30	PN-2	T15	VN-2	21
UT-08-25-L	100	199	9	90	25	20	30	PN-2	T15	VN-2	21
UT-10-25	86	185	9	90	25	25	30	PN-3	T20	VN-3	28
UT-10-25-L	126	225	9	90	25	25	30	PN-3	T20	VN-3	28
UT-12-25	102	203	9	90	25	30	30	PN-3	T20	VN-3	30
UT-12-25-L	160	260	9	90	25	30	30	PN-3	T20	VN-3	30
UT-14/16-25	126	221	5	90	25	35	37	PN-4	T20	VN-3	38
UT-14/16-25-L	180	285	5	100	35	25	37	PN-4	T20	VN-3	38
UT-02-32	25	134	9	100	32	6,5	37	PN-1	T08	VN-1	7
UT-02-32-L	34,5	143,5	9	100	32	6,5	37	PN-1	T08	VN-1	7
UT-03-32	30	139	9	100	32	8	37	PN-1	T08	VN-1	8,5
UT-03-32-L	40	149	9	100	32	8	37	PN-1	T08	VN-1	8,5
UT-04-32	40	149	9	100	32	10	37	PN-1	T08	VN-1	10,5
UT-04-32-L	56	165	9	100	32	10	37	PN-1	T08	VN-1	10,5
UT-05-32	46	155	9	100	32	12	37	PN-1	T08	VN-1	12,5
UT-05-32-L	66	165	9	100	32	12	37	PN-1	T08	VN-1	12,5
UT-06-32	56	165	9	100	32	16	37	PN-2	T15	VN-2	16,5
UT-06-32-L	81	190	9	100	32	16	37	PN-2	T15	VN-2	16,5
UT-08-32	68	172	9	100	32	20	37	PN-2	T15	VN-2	21
UT-08-32-L	100	209	9	100	32	20	37	PN-2	T15	VN-2	21
UT-10-32	86	195	9	100	32	25	37	PN-3	T20	VN-3	28
UT-10-32-L	126	235	9	100	32	25	37	PN-3	T20	VN-3	28
UT-12-32	102	213	9	100	32	30	37	PN-3	T20	VN-3	30
UT-12-32-L	160	270	9	100	32	30	37	PN-3	T20	VN-3	30
UT-14/16-32	126	231	9	100	32	35	37	PN-4	T20	VN-3	35
UT-14/16-32-L	180	285	9	100	32	35	37	PN-4	T20	VN-3	35
UT-18/25-32	140	249	9	100	32	40	45	PN-5	BR5	VN-4	42
UT-18/25-32-L	200	309	9	100	32	40	45	PN-5	BR5	VN-4	42



Platten

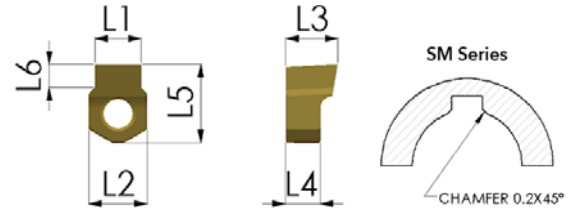


mm

IN



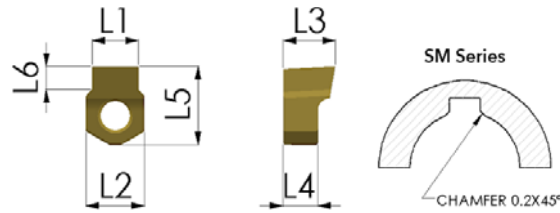
Inserts



CODE	L1	L2	L3	L4	L5	L6	Tool	RF
IN-02 P6	1,994	6,08	6,5	5	6,5	1,30	UT-02	RF-1
IN-02 P6-SM	1,994	6,08	6,5	5	6,5	1,09	UT-02	RF-1
IN-02 H7	2,010	6,08	6,5	5	6,5	1,30	UT-02	RF-1
IN-02 H7-SM	2,010	6,08	6,5	5	6,5	1,09	UT-02	RF-1
IN-02 D10	2,060	6,08	6,5	5	6,5	1,30	UT-02	RF-1
IN-02 C11	2,120	6,08	6,5	5	6,5	1,30	UT-02	RF-1
IN-03 P6	2,994	6,08	7	5	7,5	2,00	UT-03	RF-1
IN-03 P6-SM	2,994	6,08	7	5	7,5	1,42	UT-03	RF-1
IN-03 H7	3,010	6,08	7	5	7,5	2,00	UT-03	RF-1
IN-03 H7-SM	3,010	6,08	7	5	7,5	1,42	UT-03	RF-1
IN-03 D10	3,060	6,08	7	5	7,5	2,00	UT-03	RF-1
IN-03 C11	3,120	6,08	7	5	7,5	2,00	UT-03	RF-1
IN-04 P6	3,991	6,08	7	5	8	2,60	UT-04	RF-1
IN-04 P6-SM	3,991	6,08	7	5	8	2,07	UT-04	RF-1
IN-04 H7	4,012	6,08	7	5	8	2,60	UT-04	RF-1
IN-04 H7-SM	4,012	6,08	7	5	8	2,07	UT-04	RF-1
IN-04 D10	4,078	6,08	7	5	8	2,60	UT-04	RF-1
IN-04 C11	4,145	6,08	7	5	8	2,60	UT-04	RF-1
IN-05 P6	4,991	6,08	7	5	8	3,00	UT-05	RF-1
IN-05 P6-SM	4,991	6,08	7	5	8	2,74	UT-05	RF-1
IN-05 H7	5,012	6,08	7	5	8	3,00	UT-05	RF-1
IN-05 H7-SM	5,012	6,08	7	5	8	2,74	UT-05	RF-1
IN-05 D10	5,078	6,08	7	5	8	3,00	UT-05	RF-1
IN-05 C11	5,145	6,08	7	5	8	3,00	UT-05	RF-1
IN-06 P6	5,991	10,08	9	6	13,5	4,00	UT-06	RF-2
IN-06 P6-SM	5,991	10,08	9	6	13,5	3,00	UT-06	RF-2
IN-06 H7	6,012	10,08	9	6	13,5	4,00	UT-06	RF-2
IN-06 H7-SM	6,012	10,08	9	6	13,5	3,00	UT-06	RF-2
IN-06 D10	6,078	10,08	9	6	13,5	4,00	UT-06	RF-2
IN-06 C11	6,145	10,08	9	6	13,5	4,00	UT-06	RF-2
IN-08 P6	7,988	10,08	9	6	13,5	4,50	UT-08	RF-2
IN-08 P6-SM	7,988	10,08	9	6	13,5	3,78	UT-08	RF-2
IN-08 H7	8,015	10,08	9	6	13,5	4,50	UT-08	RF-2
IN-08 H7-SM	8,015	10,08	9	6	13,5	3,78	UT-08	RF-2
IN-08 D10	8,098	10,08	9	6	13,5	4,50	UT-08	RF-2
IN-08 C11	8,170	10,08	9	6	13,5	4,50	UT-08	RF-2
IN-10 P6	9,988	13,1	14	10	18,5	6,00	UT-10	RF-3
IN-10 P6-SM	9,988	13,1	14	10	18,5	3,88	UT-10	RF-3
IN-10 H7	10,015	13,1	14	10	18,5	6,00	UT-10	RF-3
IN-10 H7-SM	10,015	13,1	14	10	18,5	3,88	UT-10	RF-3
IN-10 D10	10,098	13,1	14	10	18,5	6,00	UT-10	RF-3
IN-10 C11	10,170	13,1	14	10	18,5	6,00	UT-10	RF-3



Inserts



CODE	L1	L2	L3	L4	L5	L6	Tool	RF
IN-12 P6	11,985	13,1	14	10	18,5	6,50	UT-12	RF-3
IN-12 P6-SM	11,985	13,1	14	10	18,5	3,89	UT-12	RF-3
IN-12 H7	12,018	13,1	14	10	18,5	6,50	UT-12	RF-3
IN-12 H7-SM	12,018	13,1	14	10	18,5	3,89	UT-12	RF-3
IN-12 D10	12,120	13,1	14	10	18,5	6,50	UT-12	RF-3
IN-12 C11	12,205	13,1	14	10	18,5	6,50	UT-12	RF-3
IN-14 P6	13,985	18	14	10	22	7,00	UT-14/16	RF-4
IN-14 P6-SM	13,985	18	14	10	22	4,71	UT-14/16	RF-4
IN-14 H7	14,018	18	14	10	22	7,00	UT-14/16	RF-4
IN-14 H7-SM	14,018	18	14	10	22	4,71	UT-14/16	RF-4
IN-14 D10	14,120	18	14	10	22	7,00	UT-14/16	RF-4
IN-14 C11	14,205	18	14	10	22	7,00	UT-14/16	RF-4
IN-16 P6	15,985	18	14	10	22	8,00	UT-14/16	RF-4
IN-16 P6-SM	15,985	18	14	10	22	5,53	UT-14/16	RF-4
IN-16 H7	16,018	18	14	10	22	8,00	UT-14/16	RF-4
IN-16 H7-SM	16,018	18	14	10	22	5,53	UT-14/16	RF-4
IN-16 D10	16,120	18	14	10	22	8,00	UT-14/16	RF-4
IN-16 C11	16,205	18	14	10	22	8,00	UT-14/16	RF-4
IN-18 P6**	17,982	26	16	10	30	11,00	UT-18/25	RF-5
IN-18 P6-SM**	17,982	26	16	10	30	5,67	UT-18/25	RF-5
IN-18 H7**	18,021	26	16	10	30	11,00	UT-18/25	RF-5
IN-18 H7-SM**	18,021	26	16	10	30	5,67	UT-18/25	RF-5
IN-18 D10**	18,149	26	16	10	30	11,00	UT-18/25	RF-5
IN-18 C11**	18,240	26	16	10	30	11,00	UT-18/25	RF-5
IN-20 P6**	19,982	26	16	10	30	10,00	UT-18/25	RF-5
IN-20 P6-SM**	19,982	26	16	10	30	6,29	UT-18/25	RF-5
IN-20 H7**	20,021	26	16	10	30	10,00	UT-18/25	RF-5
IN-20 H7-SM**	20,021	26	16	10	30	6,29	UT-18/25	RF-5
IN-20 D10**	20,149	26	16	10	30	10,00	UT-18/25	RF-5
IN-20 C11**	20,240	26	16	10	30	10,00	UT-18/25	RF-5
IN-22 P6**	21,982	26	16	10	30	11,00	UT-18/25	RF-5
IN-22 P6-SM**	21,982	26	16	10	30	6,79	UT-18/25	RF-5
IN-22 H7**	22,021	26	16	10	30	11,00	UT-18/25	RF-5
IN-22 H7-SM**	22,021	26	16	10	30	6,79	UT-18/25	RF-5
IN-22 D10**	22,149	26	16	10	30	11,00	UT-18/25	RF-5
IN-22 C11**	22,240	26	16	10	30	11,00	UT-18/25	RF-5
IN-25 P6**	24,982	26	16	10	30	12,00	UT-18/25	RF-5
IN-25 P6-SM**	24,982	26	16	10	30	7,02	UT-18/25	RF-5
IN-25 H7**	25,021	26	16	10	30	12,00	UT-18/25	RF-5
IN-25 H7-SM**	25,021	26	16	10	30	7,02	UT-18/25	RF-5
IN-25 D10**	25,149	26	16	10	30	12,00	UT-18/25	RF-5
IN-25 C11**	25,240	26	16	10	30	12,00	UT-18/25	RF-5

** Rohbearbeitung + Feinbearbeitung empfohlen

** *Roughing + Finishing recommended*

Platten

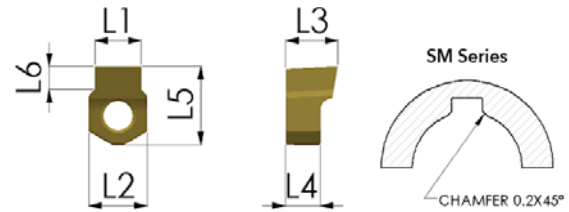


inch

IN



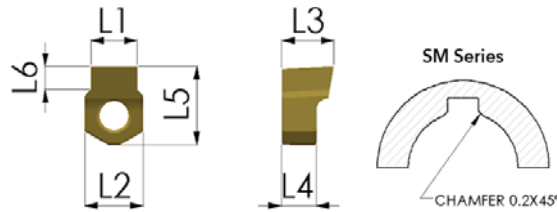
Inserts



CODE	L1 mm	L1 inch	L2 inch	L3 inch	L4 inch	L5 inch	L6 inch	Tool	RF
IN-3/32"-P6	2.3692	0.0932	0.2362	0.2755	0.1968	0.2559	0.0551	UT-02	RF-1
IN-3/32"-H7	2.3912	0.0941	0.2362	0.2755	0.1968	0.2559	0.0551	UT-02	RF-1
IN-3/32"-D10	2.4412	0.0961	0.2362	0.2755	0.1968	0.2559	0.0551	UT-02	RF-1
IN-3/32"-C11	2.5012	0.0984	0.2362	0.2755	0.1968	0.2559	0.0551	UT-02	RF-1
IN-1/8"-P6	3.1580	0.1243	0.2362	0.2755	0.1968	0.3149	0.0905	UT-03	RF-1
IN-1/8"-H7	3.1870	0.1254	0.2362	0.2755	0.1968	0.3149	0.0905	UT-03	RF-1
IN-1/8"-D10	3.2530	0.1280	0.2362	0.2755	0.1968	0.3149	0.0905	UT-03	RF-1
IN-1/8"-C11	3.3200	0.1307	0.2362	0.2755	0.1968	0.3149	0.0905	UT-03	RF-1
IN-5/32"-P6	3.9517	0.1555	0.2362	0.2755	0.1968	0.3149	0.1141	UT-04	RF-1
IN-5/32"-H7	3.9807	0.1567	0.2362	0.2755	0.1968	0.3149	0.1141	UT-04	RF-1
IN-5/32"-D10	4.0467	0.1593	0.2362	0.2755	0.1968	0.3149	0.1141	UT-04	RF-1
IN-5/32"-C11	4.1137	0.1619	0.2362	0.2755	0.1968	0.3149	0.1141	UT-04	RF-1
IN-3/16"-P6	4.7455	0.1868	0.2362	0.2755	0.1968	0.3149	0.1299	UT-05	RF-1
IN-3/16"-H7	4.7745	0.1879	0.2362	0.2755	0.1968	0.3149	0.1299	UT-05	RF-1
IN-3/16"-D10	4.8405	0.1905	0.2362	0.2755	0.1968	0.3149	0.1299	UT-05	RF-1
IN-3/16"-C11	4.9075	0.1932	0.2362	0.2755	0.1968	0.3149	0.1299	UT-05	RF-1
IN-1/4"-P6	6.3290	0.2491	0.3937	0.3543	0.2362	0.5314	0.1587	UT-06	RF-2
IN-1/4"-H7	6.3650	0.2505	0.3937	0.3543	0.2362	0.5314	0.1587	UT-06	RF-2
IN-1/4"-D10	6.4480	0.2538	0.3937	0.3543	0.2362	0.5314	0.1587	UT-06	RF-2
IN-1/4"-C11	6.5200	0.2566	0.3937	0.3543	0.2362	0.5314	0.1587	UT-06	RF-2
IN-9/32"-P6	7.1227	0.2804	0.3937	0.3543	0.2362	0.5314	0.1692	UT-08	RF-2
IN-9/32"-H7	7.1587	0.2818	0.3937	0.3543	0.2362	0.5314	0.1692	UT-08	RF-2
IN-9/32"-D10	7.2417	0.2851	0.3937	0.3543	0.2362	0.5314	0.1692	UT-08	RF-2
IN-9/32"-C11	7.3137	0.2879	0.3937	0.3543	0.2362	0.5314	0.1692	UT-08	RF-2
IN-5/16"-P6	7.9165	0.3116	0.3937	0.3543	0.2362	0.5314	0.1875	UT-08	RF-2
IN-5/16"-H7	7.9525	0.3130	0.3937	0.3543	0.2362	0.5314	0.1875	UT-08	RF-2
IN-5/16"-D10	8.0355	0.3163	0.3937	0.3543	0.2362	0.5314	0.1875	UT-08	RF-2
IN-5/16"-C11	8.1075	0.3191	0.3937	0.3543	0.2362	0.5314	0.1875	UT-08	RF-2



Inserts

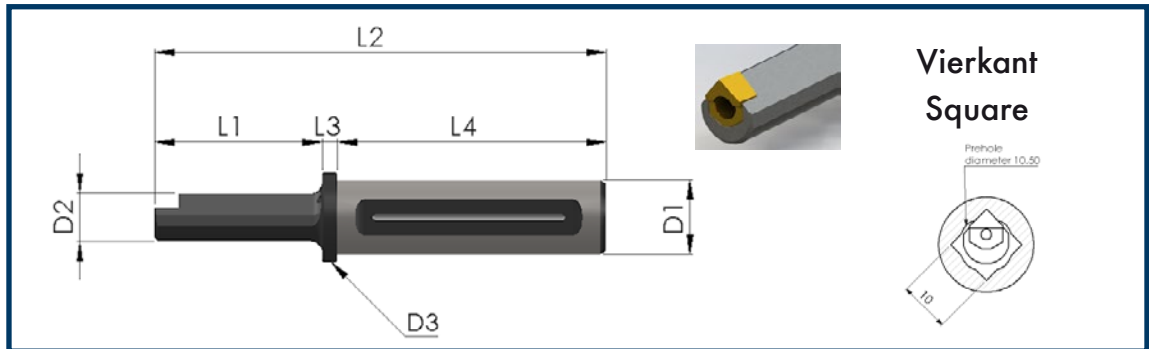


CODE	L1 mm	L1 inch	L2 inch	L3 inch	L4 inch	L5 inch	L6 inch	Tool	RF
IN-3/8"-P6	9.5040	0.3741	0.5118	0.5511	0.3937	0.7283	0.2500	UT-10	RF-3
IN-3/8"-H7	9.5400	0.3755	0.5118	0.5511	0.3937	0.7283	0.2500	UT-10	RF-3
IN-3/8"-D10	9.6230	0.3788	0.5118	0.5511	0.3937	0.7283	0.2500	UT-10	RF-3
IN-3/8"-C11	9.6950	0.3816	0.5118	0.5511	0.3937	0.7283	0.2500	UT-10	RF-3
IN-7/16"-P6	11.0865	0.4364	0.7086	0.5511	0.3937	0.8661	0.2500	UT-12	RF-3
IN-7/16"-H7	11.1305	0.4382	0.7086	0.5511	0.3937	0.8661	0.2500	UT-12	RF-3
IN-7/16"-D10	11.2325	0.4422	0.7086	0.5511	0.3937	0.8661	0.2500	UT-12	RF-3
IN-7/16"-C11	11.3175	0.4455	0.7086	0.5511	0.3937	0.8661	0.2500	UT-12	RF-3
IN-1/2"-P6	12.6740	0.4989	0.7086	0.5511	0.3937	0.8661	0.3000	UT-12	RF-3
IN-1/2"-H7	12.7180	0.5007	0.7086	0.5511	0.3937	0.8661	0.3000	UT-12	RF-3
IN-1/2"-D10	12.8200	0.5047	0.7086	0.5511	0.3937	0.8661	0.3000	UT-12	RF-3
IN-1/2"-C11	12.9050	0.5080	0.7086	0.5511	0.3937	0.8661	0.3000	UT-12	RF-3
IN-9/16"-P6	14.2615	0.5614	0.7086	0.5511	0.3937	0.8661	0.2750	UT-14/16	RF-4
IN-9/16"-H7	14.3055	0.5632	0.7086	0.5511	0.3937	0.8661	0.2750	UT-14/16	RF-4
IN-9/16"-D10	14.4075	0.5672	0.7086	0.5511	0.3937	0.8661	0.2750	UT-14/16	RF-4
IN-9/16"-C11	14.4925	0.5705	0.7086	0.5511	0.3937	0.8661	0.2750	UT-14/16	RF-4
IN-5/8"-P6	15.8490	0.6239	0.7086	0.5511	0.3937	0.8661	0.3120	UT-14/16	RF-4
IN-5/8"-H7	15.8930	0.6257	0.7086	0.5511	0.3937	0.8661	0.3120	UT-14/16	RF-4
IN-5/8"-D10	15.9950	0.6297	0.7086	0.5511	0.3937	0.8661	0.3120	UT-14/16	RF-4
IN-5/8"-C11	16.0800	0.6330	0.7086	0.5511	0.3937	0.8661	0.3120	UT-14/16	RF-4
IN-3/4"-P6	19.0190	0.7487	0.7086	0.5511	0.3937	0.8661	0.3930	UT-18/25	RF-4
IN-3/4"-H7	19.0710	0.7508	0.7086	0.5511	0.3937	0.8661	0.3930	UT-18/25	RF-4
IN-3/4"-D10	19.1990	0.7558	0.7086	0.5511	0.3937	0.8661	0.3930	UT-18/25	RF-4
IN-3/4"-C11	19.2900	0.7594	0.7086	0.5511	0.3937	0.8661	0.3930	UT-18/25	RF-4





Square Broaching Tools



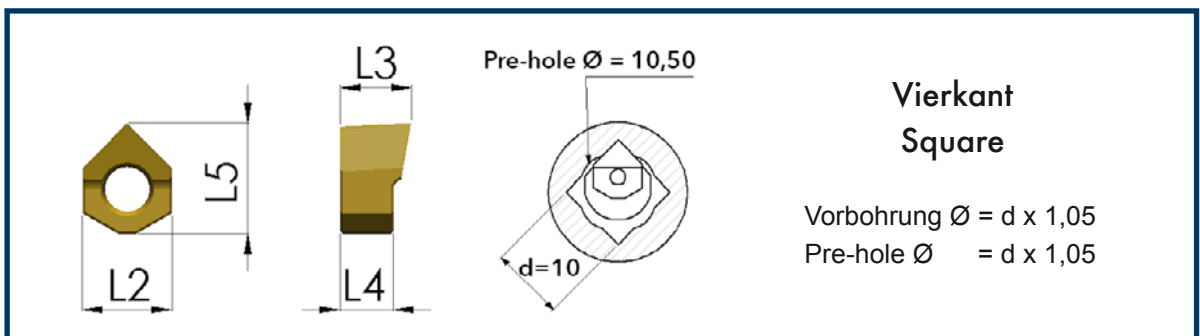
CODE	L1	L2	L3	L4	D1	D2	D3	P	T	V	Min Ø
UT-SQ-8/10-25	30	129	9	90	25	8	30	PN-1	T08	VN-1	8
UT-SQ-10/13-25	40	139	9	90	25	10	30	PN-1	T08	VN-1	10
UT-SQ-13/16-25	50	149	9	90	25	13	30	PN-2	T15	VN-2	13
UT-SQ-16/19-25	52	151	9	90	25	16	30	PN-3	T20	VN-3	16
UT-SQ-19/27-25	86	185	9	90	25	18	30	PN-3	T20	VN-3	19
UT-SQ-27/37-25	100	199	9	90	25	25	30	PN-4	T20	VN-3	27
UT-SQ-8/10-32	30	139	9	100	32	8	38	PN-1	T08	VN-1	8
UT-SQ-10/13-32	40	149	9	100	32	10	38	PN-1	T08	VN-1	10
UT-SQ-13/16-32	50	159	9	100	32	13	38	PN-2	T15	VN-2	13
UT-SQ-16/19-32	52	161	9	100	32	16	38	PN-3	T20	VN-3	16
UT-SQ-19/27-32	86	195	9	100	32	18	38	PN-3	T20	VN-3	19
UT-SQ-27/37-32	100	209	9	100	32	25	38	PN-4	T20	VN-3	27
UT-SQ-37/50-32	140	249	9	100	32	35	45	PN-5	BR5	VN-4	37

Platten - Vierkant Square Inserts



mm

IN

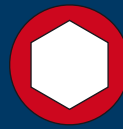


Vierkant Square

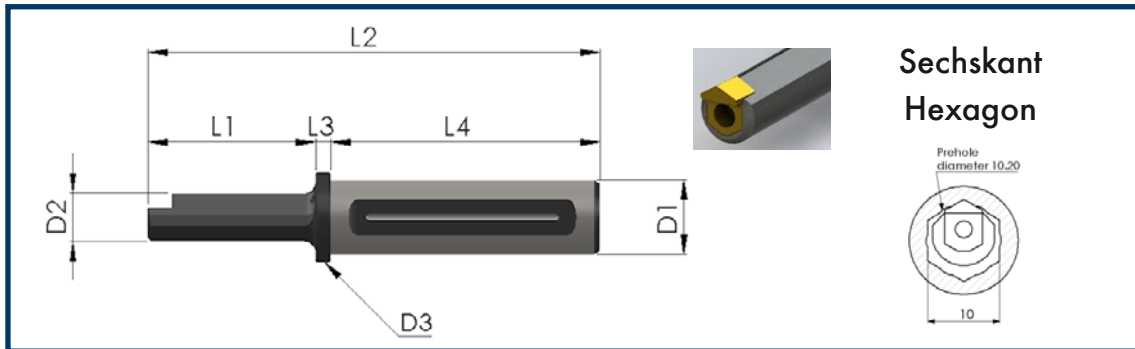
Vorbohrung Ø = d x 1,05
Pre-hole Ø = d x 1,05

CODE	Bearbeitungsbereich Operation Range	L2	L3	L4	L5	Tool	RF
IN-SQ-8/10	8/9	6	7	5	7	UT-SQ-8/9	RF-1
IN-SQ-10/13	10/12	6	7	5	7,5	UT-SQ-10/12	RF-1
IN-SQ-13/16	13/15	6	8	6	12	UT-SQ-13/15	RF-2
IN-SQ-16/19	16/18	10	8	6	12,5	UT-SQ-16/18	RF-2
IN-SQ-19/27	19/26	13	13	10	17	UT-SQ-19/26	RF-3
IN-SQ-27/37	27/36	18	14	10	22	UT-SQ-27/36	RF-4
IN-SQ-37/50	37/50	26	18	10	30	UT-SQ-37/50	RF-5





Hexagon Broaching Tools



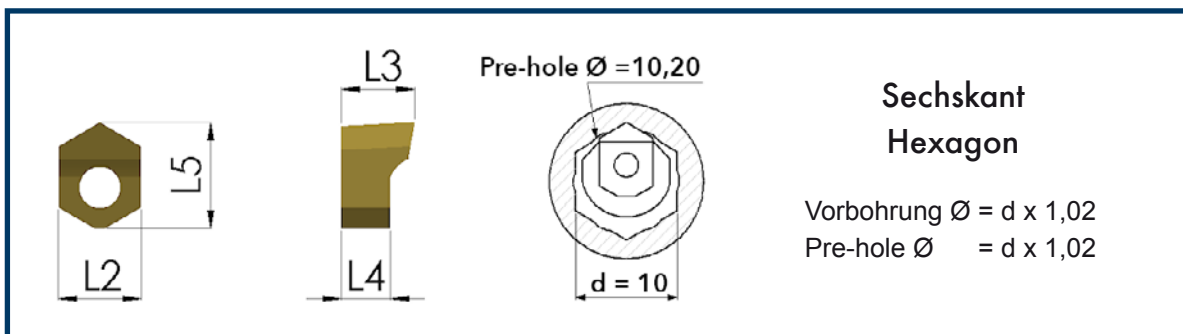
CODE	L1	L2	L3	L4	D1	D2	D3	P	T	V	Min Ø
UT-HEX-9/11-25	30	129	9	90	25	8	30	PN-1	T08	VN-1	9
UT-HEX-11/17-25	40	139	9	90	25	10	30	PN-1	T08	VN-1	11
UT-HEX-17/28-25	56	155	9	90	25	15	30	PN-2	T15	VN-2	17
UT-HEX-28/37-25	86	185	9	90	25	25	30	PN-3	T20	VN-3	28
UT-HEX-37/45-25	126	225	9	90	25	35	45	PN-4	T20	VN-3	37
UT-HEX-9/11-32	30	139	9	100	32	8	38	PN-1	T08	VN-1	9
UT-HEX-11/17-32	40	149	9	100	32	10	38	PN-1	T08	VN-1	11
UT-HEX-17/28-32	56	165	9	100	32	15	38	PN-2	T15	VN-2	17
UT-HEX-28/37-32	86	195	9	100	32	25	38	PN-3	T20	VN-3	28
UT-HEX-37/45-32	126	235	9	100	32	35	45	PN-4	T20	VN-3	37
UT-HEX-45/70-32	140	249	9	100	32	40	45	PN-5	BR5	VN-4	45

Platten - Sechskant
Hexagon Inserts



mm

IN



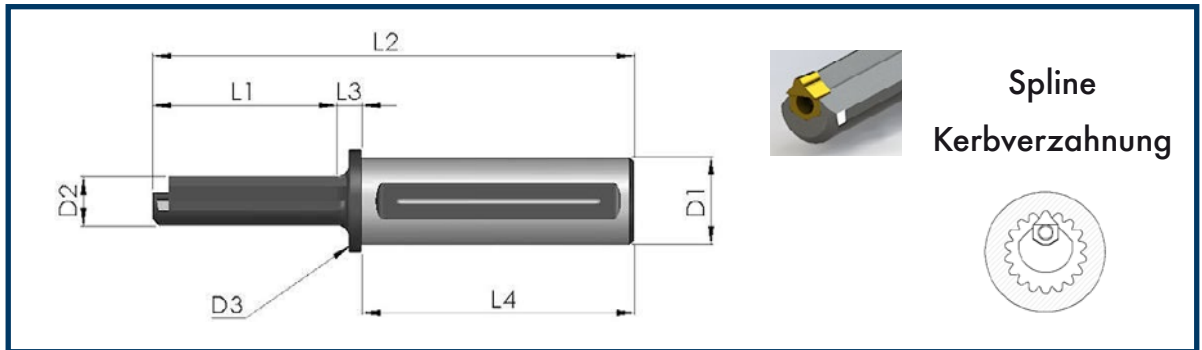
Sechskant
Hexagon

Vorbohrung Ø = d x 1,02
Pre-hole Ø = d x 1,02

CODE	Bearbeitungsbereich Operation Range	L2	L3	L4	L5	Tool	RF
IN-HEX-9/11	9/10	6	7	5	7,5	UT-HEX-9/10	RF-1
IN-HEX-11/17	11/16	6	7	5	8	UT-HEX-11/16	RF-1
IN-HEX-17/28	17/27	10	9	6	13,5	UT-HEX-17/27	RF-2
IN-HEX-28/37	28/36	13	14	10	18,5	UT-HEX-28/36	RF-3
IN-HEX-37/45	37/44	18	14	10	22	UT-HEX-37/44	RF-4
IN-HEX-45/70	45/70	26	16	10	30	UT-HEX-45/70	RF-5



Spline Broaching Tools



Spline
Kerbverzahnung

CODE	L1	L2	L3	L4	D1	D2	D3	P	T	V	Min Ø
UTS-02-25	25	124	9	90	25	6,5	30	PN-1	T08	VN-1	7
UTS-03-25	30	129	9	90	25	8	30	PN-1	T08	VN-1	8,5
UTS-04-25	40	139	9	90	25	10	30	PN-1	T08	VN-1	10,5
UTS-05-25	46	145	9	90	25	12	30	PN-1	T08	VN-1	12,5
UTS-06-25	56	155	9	90	25	16	30	PN-2	T15	VN-2	16,5
UTS-08-25	68	162	9	90	25	20	30	PN-2	T15	VN-2	21
UTS-10-25	86	185	9	90	25	25	30	PN-3	T20	VN-3	28
UTS-12-25	102	203	9	90	25	30	30	PN-3	T20	VN-3	33
UTS-14/16-25	126	221	5	90	25	35	37	PN-4	T20	VN-3	38
UTS-02-32	25	134	9	100	32	6,5	37	PN-1	T08	VN-1	7
UTS-03-32	30	139	9	100	32	8	37	PN-1	T08	VN-1	8,5
UTS-04-32	40	149	9	100	32	10	37	PN-1	T08	VN-1	10,5
UTS-05-32	46	155	9	100	32	12	37	PN-1	T08	VN-1	12,5
UTS-06-32	56	165	9	100	32	16	37	PN-2	T15	VN-2	16,5
UTS-08-32	68	172	9	100	32	20	37	PN-2	T15	VN-2	21
UTS-10-32	86	195	9	100	32	25	37	PN-3	T20	VN-3	28
UTS-12-32	102	213	9	100	32	30	37	PN-3	T20	VN-3	33
UTS-14/16-32	126	231	9	100	32	35	37	PN-4	T20	VN-3	38
UTS-18/25-32	140	249	9	100	32	40	45	PN-5	B.5	VN-4	42



Platten nach Anfrage, gefertigt nach Werkstückzeichnung
Inserts upon request, manufactured according to workpiece drawing

Außenbearbeitung
External

CODE	L1	L2	L3	L4	L5	L6
UTE-20-DX	150	110	20x20	32,5	20	12,5
UTE-20-SX	150	110	20x20	32,5	20	12,5
UTE-25-DX	150	110	25x25	37,5	25	12,5
UTE-25-SX	150	110	25x25	37,5	25	12,5



Slotting Tools

Längsnut Mini
Keyway Mini

CODE	L1	L2	D1	D2
UT-1/8-19.05	90	15	30	19,05
UT-1/8-20	90	15	30	20
UT-1/8-25	90	15	30	25
UT-1/8-32	100	15	38	32

Platte Mini
Insert Mini

CODE	L1	L2	F1	D1	D2
IN-1/8	18	2	Auf Anfrage	10 H7	15

Werkzeug für Nutstoßgeräte
aller gängigen Marken
Slotter for Live Broaching Tools
of all major makers

CODE	L1	L2	L3	D1	D2	D3	Min Ø	R	T	V
TM-2	25	a. Anfrage	5	a. Anfrage	7	20	7	RF-1	T08	VN-1
TM-3	30	a. Anfrage	5	a. Anfrage	8	20	8,5	RF-1	T08	VN-1
TM-4	40	a. Anfrage	5	a. Anfrage	10	20	10	RF-1	T08	VN-1
TM-5	46	a. Anfrage	5	a. Anfrage	12	20	13	RF-1	T08	VN-1
TM-6	56	a. Anfrage	5	a. Anfrage	16	20	17	RF-2	T15	VN-2
TM-8	64	a. Anfrage	5	a. Anfrage	20	20	21	RF-2	T15	VN-2
TM-10/12	70	a. Anfrage	5	a. Anfrage	22	20	24	RF-3	T20	VN-3





Räummaschinen | *Broaching Machines*

KIT-STO-625
KIT-STO-625-L

KIT-STO-632
KIT-STO-632-L

- ▼ UT-03, 04, 05, 06, 08, 10
- ▼ AD35
- ▼ 12 Platten / Inserts
- ▼ RF-1, RF-2, RF-3
- ▼ 3 Schraubenzieher / Screwdrivers
- ▼ Werkzeughalterbasis / Tool carrier



Drehmaschinen | *Lathes*

KIT-LAT-725
KIT-LAT-725-L

KIT-LAT-732
KIT-LAT-732-L

- ▼ UT-03, 04, 05, 06, 08, 10, 12
- ▼ B32
- ▼ 14 Platten / Inserts
- ▼ RF-1, RF-2, RF-3
- ▼ 3 Schraubenzieher / Screwdrivers
- ▼ Werkzeughalterbasis / Tool carrier

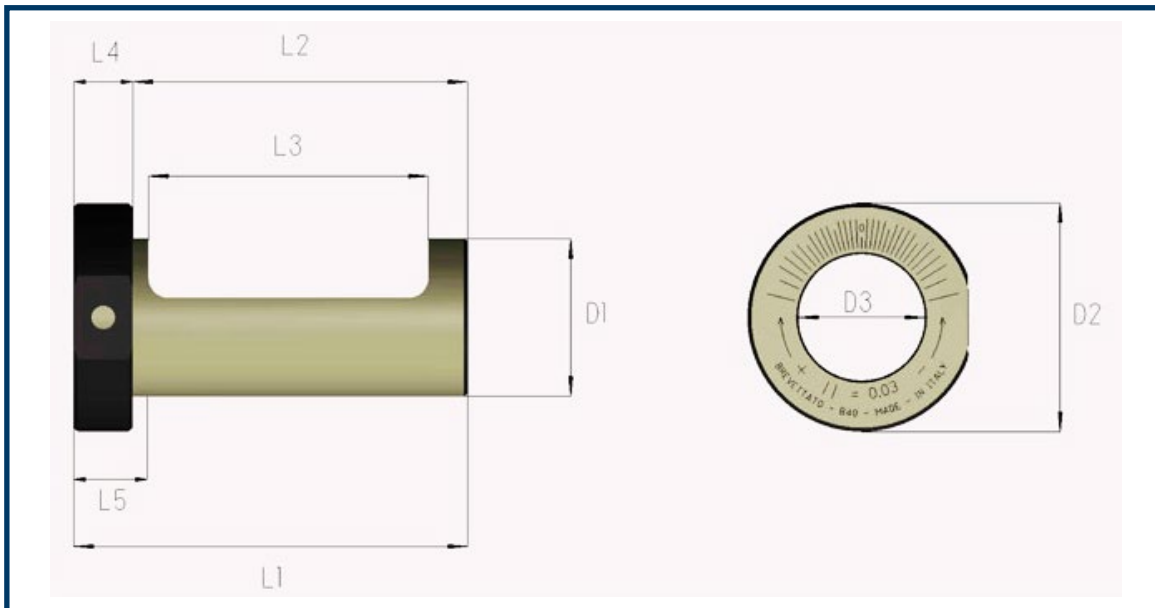


Räummaschinen | *Broaching Machines*

KIT-STO-825
KIT-STO-825-L

KIT-STO-832
KIT-STO-832-L

- ▼ UT-03, 04, 05, 06, 08, 10, 12, 14/16
- ▼ AD35
- ▼ 18 Platten / Inserts
- ▼ RF-1, RF-2, RF-3, RF-4
- ▼ 3 Schraubenzieher / Screwdrivers
- ▼ Werkzeughalterbasis / Tool carrier



Exzentrische Buchse

- ▼ Exzentrische Buchse für Drehmaschinen ohne Y-Achse, zur Achsen-Korrektur
- ▼ Gefertigt aus gehärtetem Werkzeugstahl
- ▼ Verstellung auf Y-Achse: 0,5 mm Y+ 0,5 mm Y-
- ▼ Verfügbar in verschiedenen Größen

Eccentric Sleeve

- ▼ The eccentric bushing is necessary for all lathes without Y axis
- ▼ Manufactured with tempered tool steel
- ▼ Correction on Y axis: From 0.5 mm Y+ to 0.5 mm Y-
- ▼ Available in different sizes, allowing it to be used with different holders

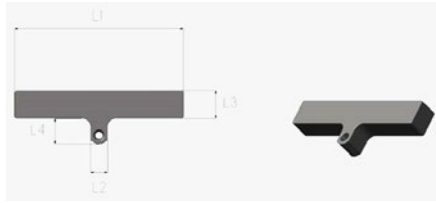
CODE	D3 Ø	L1	L2	L3	L4	L5	D1	D2
B-32	25	85	70	58	15	20	32 H7	55
B-40	32	95	80	66	15	20	40 H7	55
B-50	32	115	100	75	15	20	50 H7	65
B-60	32	115	100	75	15	20	60 H7	80
B-32 VDI	25	65	50	38	15	20	32 H7	55
B-40 VDI	32	80	65	51	15	20	40 H7	55
B-50 VDI	32	95	80	55	15	20	50 H7	65
B-60 VDI	32	95	80	55	15	20	60 H7	80





Accessories

Zentrierplatte Centring Plates



CODE	L1	L2	UT
PN-1	6	50	UT 3-4-5
PN-2	10	50	UT 6-8
PN-3	13	60	UT 10-12
PN-4	18	70	UT 14/16
PN-5	26	70	UT-18/26

Torx-Schrauben für Platten Torx Screws for Fixing Inserts



CODE	T	D
VN-1	Torx	M2,5 x 8
VN-2	Torx	M4 x 10
VN-3	Torx	M6 x 15
VN-4	TCEI	M8 x 16

Stange zum Nachschleifen Sharpening Stems



CODE	L1
RF-1	150
RF-2	150
RF-3	150

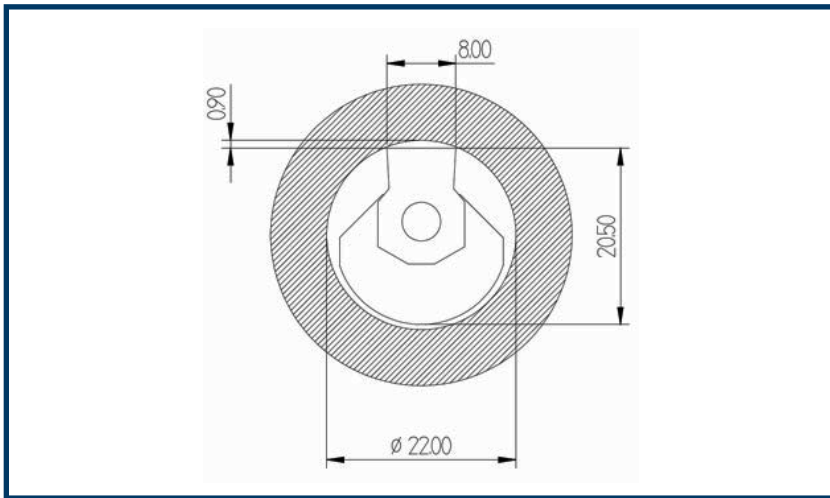
Torx-Schraubenzieher Torx Screwdriver



CODE	T	D
T-08	Torx	8
T-15	Torx	15
T-20	Torx	20

Sonderwerkzeuge Special Tools





- Zum Nutstoßen ist es notwendig, einen kleineren Durchmesser als den von der Bohrung ins CNC-Programm einzugeben.
- *To implement the keys in the holes you need to specify in the CNC program, a value which is smaller than the hole diameter, according to the following parameters.*

Eine Nutzenstoßbearbeitung von 20 mm entspricht die Belastung auf der Maschinenspindel, einer Bohrbearbeitung von Ø14mm

The load on the machinespindle during a slotting operation of 20 mm corresponds to a drilling operation of Ø14mm

Breite Width	Reduzierung Reduction	Durchmesser Diameter
3mm	-0.30	9mm
4mm	-0.40	11mm
5mm	-0.50	14mm
6mm	-0.50	18mm
8mm	-0.80	22mm
10mm	-0.80	32mm
12mm	-1.00	40mm

Material	Schnittgeschw. Cutting Speed	Schnitttiefe Cutting Depth	Standzeit (Meter) Cutting Life (meters)
Aluminium Aluminum	10 m/min	0,15 / 0,25 mm	1500
Gußeisen Cast Iron	6 m/min	0,10 / 0,20 mm	300
Stahl 1040 / C40 Steel	6 m/min	0,05 / 0,12 mm	200
Inox Stainless Steel	5 m/min	0,03 / 0,05 mm	50





STANDARD- UND SONDERWERKZEUGE **STANDARD AND SPECIAL TOOLHOLDERS**



SCHRUMPFUTTER
HYDRO-DEHNFUTTER
UP-SPANNZANGENFUTTER
MONOBLOCK-WERKZEUGE
MESSERKOPFAUFNAHMEN
KRAFTSPANNFUTTER

SHRINK CHUCKS
HYDRAULIC CHUCKS
UP COLLET CHUCKS
MONOBLOCK TOOLHOLDERS
SHELL MILL HOLDERS
MILLING CHUCKS



ANGETRIEBENE WERKZEUGE

DRIVEN TOOLS

BARUFFALDI

BIGLIA

DMG MORI

DOOSAN

DUPLOMATIC

EMAG

EMCO

GOODWAY

HAAS

HWACHEON

HYUNDAI

INDEX

MAZAK

NAKAMURA

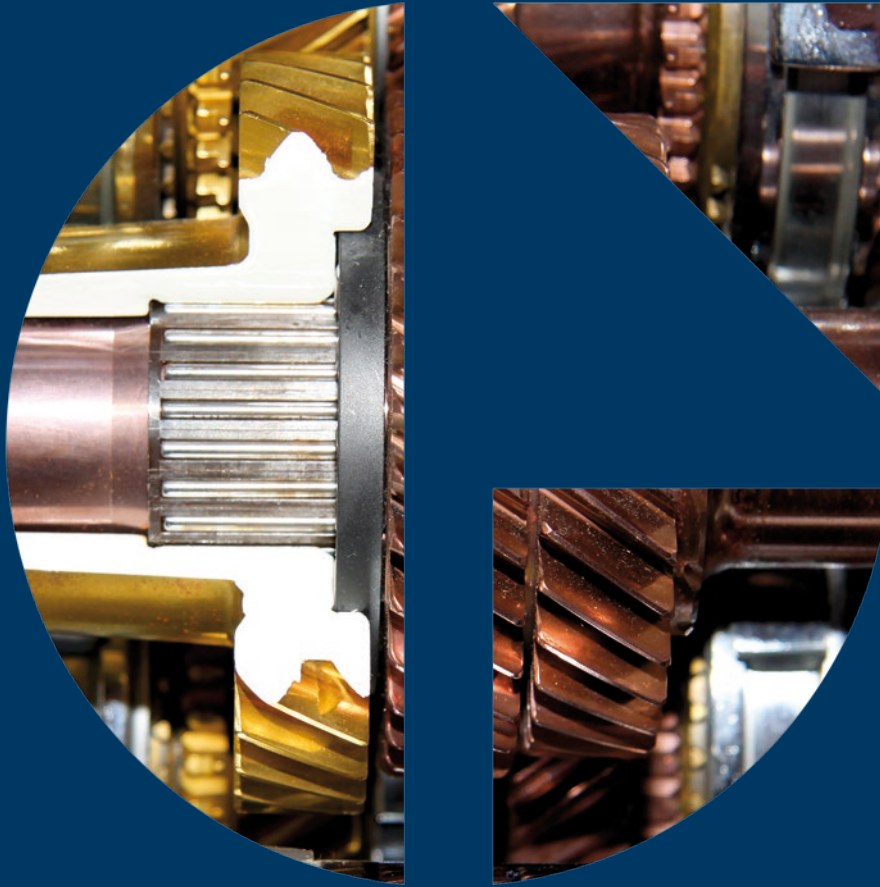
OKUMA

SAMSUNG

TAKISAWA

TRAUB





 **Gisstec**[®]

Gisstec GmbH
Heesenstr. 70
40549 Düsseldorf
Germany

Tel +49 211 2486 3666
Fax +49 211 9859 3175
info@gisstec.com
www.gisstec.com