



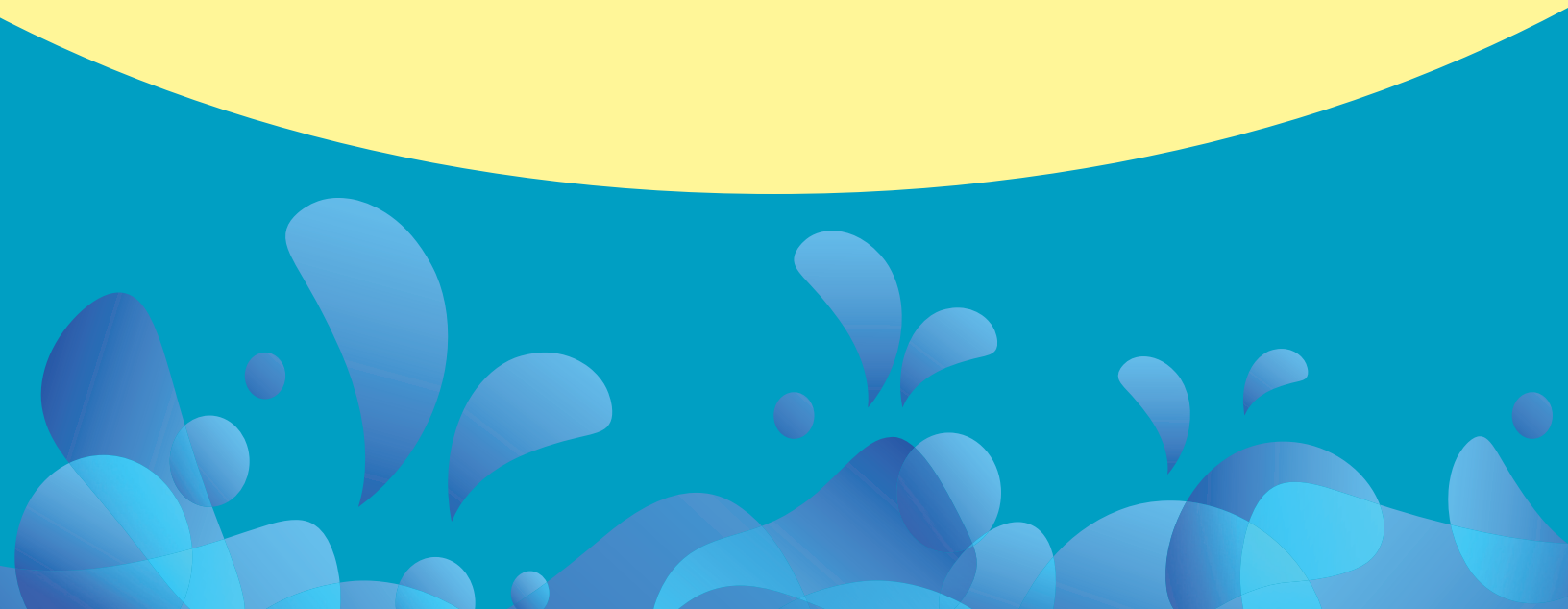
# CLE by the Sea

January 11-13, 2017  
IP Casino • Resort • Spa  
Biloxi, Mississippi

---

Fun ☀ Exciting ☀ Educational ☀ New ☀ Different ☀ Timely

---



## WEDNESDAY, JANUARY 11

6:00 – 7:00 p.m. – **Welcome Reception** (*open to all attendees and guests*)

## THURSDAY, JANUARY 12

7:30 a.m. **Registration & Continental Breakfast**

8:20 a.m. **Welcome**

Program Moderator: **Dana Tippin Cutler**, *James W. Tippin & Associates*, Kansas City

8:30 a.m. **The Digital Age and Estate Planning: Overcoming Key Challenges**

Until fairly recently, acquiring asset information for estate planning was a straightforward task. The new reality of digital assets presents challenges for estate planners and fiduciaries alike. If not addressed appropriately in succession or estate plans, valuable properties and information can be lost forever or become entangled in a complex web of security and compliance concerns.

Speaker: **T. Jack Challis**, *Polsinelli, PC*, St. Louis

9:25 a.m. **Family Law and Same-Sex Marriages: Divorce, Custody, Support & Embryos – Where It Stops – Nobody Knows**

Develop a better understanding of legal and ethical issues surrounding assisted reproductive technology, such as:

- ▶ The rights of children born from frozen embryos
- ▶ The disposition of frozen embryos in a divorce, and
- ▶ Whether sperm donors could have child support obligations

Speaker: **Paola A. Stange** and **Kirk C. Stange**, *Stange Law Firm, PC*, Clayton

10:20 a.m. **Refreshment Break**

10:35 a.m. **Cloud Services for Lawyers: Practical & Ethical Considerations**

Storing documents in the cloud is now easy and affordable for firms and businesses of any size. Leveraging cloud storage means your documents can be available to you anywhere. But are cloud services secure and appropriate for lawyers? If you manage security properly you will avoid any problems, including ethics issues.

Speaker: **Ernest Svenson**, *Ernie the Attorney*, New Orleans, LA

11:35 a.m. **Point/Counter Point!**

Experienced litigators make a case for and against arguing damages, the medical malpractice statute, attorney conducted *voir dire*, and the use of focus groups.

Speakers: **Morry S. Cole**, *Gray, Ritter & Graham, P.C.*, St. Louis

**Rod E. Loomer**, *Turner Reid Duncan Loomer & Patton, P.C.*, Springfield

12:20 p.m. **Lunch** (*included with program*)



# SCHEDULE

2.3 Ethics Hours

## FRIDAY, JANUARY 13

- 7:30 a.m. **Hot Breakfast** (included with program)
- 8:30 a.m. **Evidentiary Motions: Pre-Trial and In-Trial**  
Be comfortable in your knowledge of the common motions that must be filed or made to ensure a fair trial and to preserve grounds for a potential appeal.  
Speaker: **Andrew D. Mendez**, *Stone Pigman Walther Wittmann, LLC*, New Orleans
- 9:25 a.m. **“Uh-Oh!!” Ethical Land Mines to Avoid**  
Learn how to ethically navigate the legal landscape and avoid the potentially explosive situations that can catch attorneys off-guard. Through the use of illustrative scenarios, discover the best ways to watch your step in every type of practice, including a look at some gray areas and fine lines likely to lead to spirited debate and lively discourse.  
Speaker: **Keith A. Cutler**, *James W. Tippin & Associates*, Kansas City
- 10:20 a.m. **Refreshment Break**
- 10:35 a.m. **Best Practices for Workplace & Employer Investigations**  
Get up-to-date guidance on employee investigations – sharpen your chops by incorporating best practices and important tips on how to avoid common pitfalls in your advice to clients.  
Speaker: **Michael A. Williams**, *Williams Dirks Dameron, LLC*, Kansas City
- 11:35 a.m. **DWI: Understanding the Breath Test**  
Recognize the issues so you can challenge the results. Learn about flawed testing that results from mistakes made in calibrating breathalyzer devices.  
Speaker: **Erik A. Bergmanis**, *Bergmanis Law Firm, LLC*, Camdenon
- 12:20 p.m. **Adjourn**



Erik A.  
Bergmanis



T. Jack  
Challis



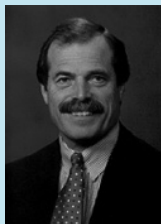
Morry S.  
Cole



Dana  
Tippin Cutler



Keith A.  
Cutler



Rod E.  
Loomer



Andrew D.  
Mendez



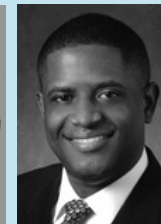
Kirk C.  
Stange



Paola A.  
Stange



Ernest  
Svenson



Michael A.  
Williams



# IP CASINO • RESORT • SPA

850 Bayview Avenue • Biloxi, Mississippi



Winner of the elite AAA Four Diamond award, The IP Casino Resort Spa, is the Gulf Coast's premier entertainment resort destination. Towering 32 stories over the scenic Back Bay of Biloxi, the IP is home to more than 1,000 elegantly appointed hotel rooms and suites with full amenities. IP Casino Resort Spa features a vast array of live entertainment options, great restaurants, and a first-class spa to indulge your senses. The resort offers specialized golf packages to the Coast's premier golf courses. Let them make your next visit to the Coast a trip you won't forget!



## RESERVE YOUR ROOM

Missouri Bar members may make their own reservations by going online to:

[www.ipbiloxi.com/groups](http://www.ipbiloxi.com/groups)

and using the Meeting Group's Code S161904. Or, call Hotel's Reservations Department directly (888-946-2847 #1) and identify yourself by using the name of the group or by using the Meeting Group's Code. Reservations must be guaranteed with a major credit card. First night's room and tax will be charged at the time the reservation is made. Sleeping Room rate: \$65.99 Single or double. See registration page for additional hotel information.

## DISCOUNTS & COMPLIMENTARY OFFERS

Complimentary Valet and Self-Parking

Complimentary Wireless Internet  
(in guest rooms and meeting space)

Complimentary Fitness Center access

25% Discount off treatments or spa services  
in Senses Spa & Salon  
(must be 18 or older; Saturday excluded)

Golf discount for attendees  
wanting to play at Shell Landing

## CLE BY THE SEA

### Payment information (The Missouri Bar does NOT accept cash)

Pay by debit or credit card online or fax to 573-659-8931. Register by phone toll-free at 1-888-253-6013 or 573-635-4128

Check Payment – Make checks payable to The Missouri Bar and mail along with this form to:  
The Missouri Bar, CLE by the Sea Registration, P.O. Box 119, Jefferson City, MO 65102-0119

Name: \_\_\_\_\_ Bar Number \_\_\_\_\_

Street Address \_\_\_\_\_ P.O. Box \_\_\_\_\_

City/State/Zip \_\_\_\_\_

Phone Number \_\_\_\_\_ Fax \_\_\_\_\_

E-mail \_\_\_\_\_

(Required for electronic course materials)

Check  American Express  MasterCard  VISA  Discover

Debit/Credit Card No. \_\_\_\_\_ Exp. Date \_\_\_\_\_ CVV \_\_\_\_\_

Signature \_\_\_\_\_

(Required for Credit Card Purchases)

#### Registration Fee: (includes printed and electronic course materials)

- \$599 — Registrations received by July 31, 2016
- \$699 — Registrations received between August 1, 2016 - November 10, 2016
- \$799 — Registrations received after November 10, 2016
- \$499 — Season Pass Holders \_\_\_ Basic \_\_\_ Limited \_\_\_ Unlimited

#### Guest Tickets

- \$25 per person – Thursday Lunch
- \$20 per person – Friday Breakfast

**(Wednesday night Welcome Reception is open to attendees and guests)**

*\*If you are registering 3+ lawyers to attend, from a single law firm, please contact dmason@mobar.org or call 573-638-2247 for group rate pricing.*

#### Special Needs Requests:

- I request special meals. Please explain in detail.

- I have special needs addressed by the ADA. Please contact me about reasonable accommodations.

**CLE Accreditation:** Missouri estimated up to 9.0 MCLE hours, including up to 2.3 ethics hours. Kansas and Illinois credit will be applied for.

#### Conference Refund Policy

- A **full refund** will be issued if we receive your written cancellation by December 1, 2016.
- Written cancellations received between December 2, 2016 and January 3, 2017 will receive a **partial refund** minus a \$160 administrative fee. Course materials will be sent to you.
- **No refunds** will be issued for cancellations received after January 3, 2017. Course materials will be sent to you.
- All cancellation and refund requests must be in writing.

#### Additional Hotel Information

##### Sleeping Room Rate:

- Single or Double - \$65.99/night (Wed & Thu); \$175.99/night (Fri & Sat)
- King Spa Suite - \$145.99/night (Wed & Thu); \$295.99/night (Fri & Sat)
- Luxury Suite - \$165.99/night (Wed & Thu); \$325.99/night (Fri & Sat)
- Penthouse Suite - \$245.99/night (Wed & Thu); \$575.99/night (Fri & Sat)

All room rates are subject to taxes and a \$10.08 per night resort fee.

First night's reservation room and tax will be charged at time of reservation.

Personal or Company Checks: The hotel front desk does not accept checks at check-in. If writing a check, hotel will enter reservation as a non-guaranteed reservation. Payment for the full amount of room, tax and resort fee for all nights (amount provided at time of reservation) will be due and must be received within two weeks after making the reservation or two weeks prior to arrival, whichever date comes first. Otherwise the reservation will be automatically cancelled.

The deadline for all room reservations will be 12:01 a.m. on Wednesday, December 21, 2016 or until rooms in the block are gone, whichever comes first.



## CLE by the Sea

The Missouri Bar  
P.O. Box 119  
Jefferson City, MO 65102-0119

Nonprofit Org.  
U.S. POSTAGE  
PAID  
Jefferson City, MO  
Permit No. 312



**MoBar**  
**CLE**



# CLE by the Sea

January 11-13, 2017  
IP Casino • Resort • Spa  
Biloxi, Mississippi