

Rationellt byggande.
Sunt boende.





What do we build?

Multi-family housing 2–8 storeys

- Condominiums
- Student accommodations
- Rental apartments
- Retirement homes
- Hotels



Brf Living
Besqab, 2016



Valsta Centrum
Nya Valsta Centrum, 2015







Tvålfvingan
Stena Fastigheter, 2011



Tyresö Trädgårdar
Oscar Properties, 2015



Hjortronstället, Ursvik

Lindbäck's Boende, 2013-2014



Cederterrassen, Piteå
Lindbäcks Boende, 2013



Konstnären
Lindbäck's Boende, 2016



Tallen, Piteå
Lindbäck's Boende, 2017



Kosmopoliten, Kista
Lindbäck's Boende, 2018



Lindens Torg, Kungsbacka,
Lindbäck's Boende, 2018



Urskogen, Ursvik

Lindbäck's Boende 2018/2019



Dagsmejan, Sollentuna
Lindbäcks Boende, 2017



Träkojan, Sollentuna
Lindbäcks Boende, 2017



Skogstjärnan, Haninge
Lindbäck's Boende, 2018

How is it done?



Wall Element Production

- Mixture of manual and machine process
- Scalable and Changeable
- Line Workers participate in process improvement
- At Lindbäck the processes are always being improved



Wall Turning

- Value is added from both sides of wall
- Allows increased use of machine process
- Completely safe manipulation of large objects

















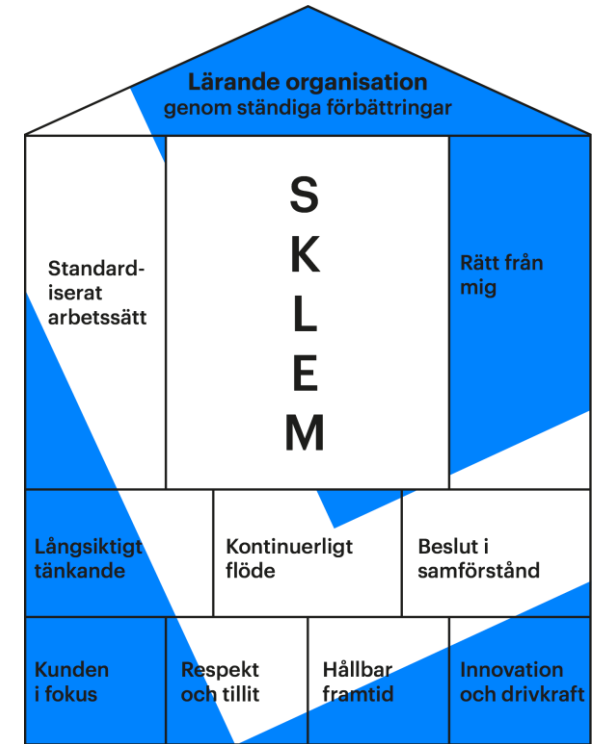
The car industry is our role model
for producing buildings



Machine

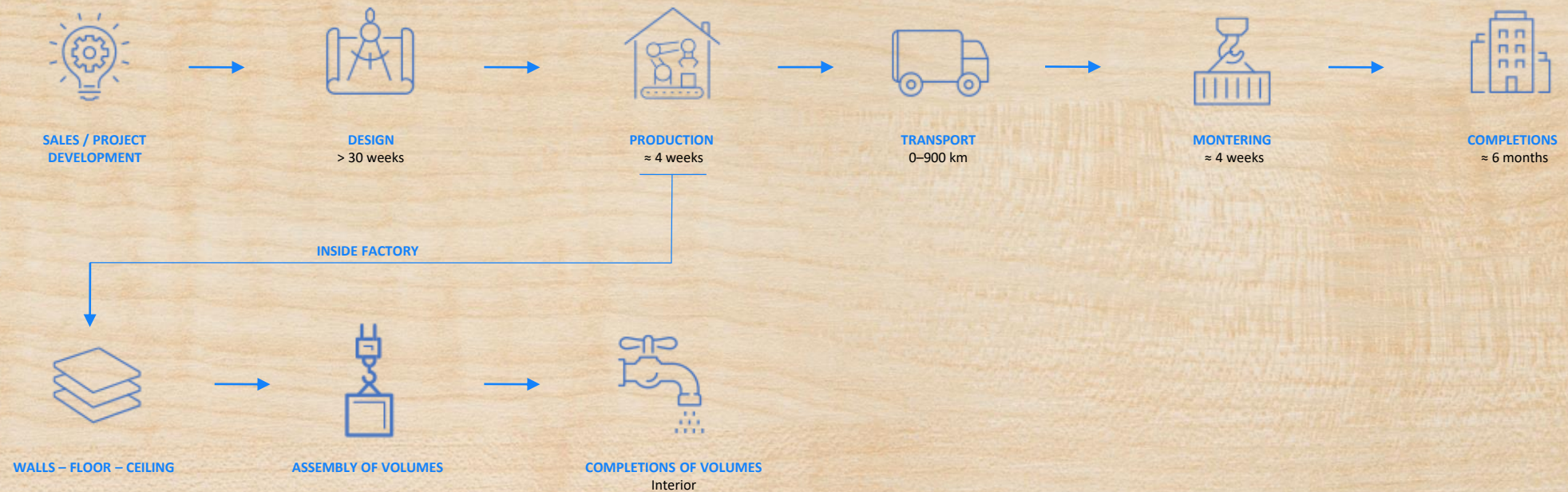


Human



Method

Industrialized production of multi-family housing






Typically, on a US commercial building, the volumes contain a corridor

- Require large yards for staging and storage
- Carriers usually custom “chassis” or low “drop deck” carriers
- Require extensive packaging easier to damage in transit
- More difficult to position relative to crane
- Extensive double handling



Lindbäck's uses a smaller volume element

- Sizes in the range of 8' (8.5m) long and 13.6' (4.15m) wide



Number one producer of
multi-family housing in Europe 2018



New production facility

An aerial photograph of a large industrial production facility. The main building is a long, white structure with a grey roof. To its right is a smaller, yellow and grey building. In front of the main building is a large, dark asphalt parking lot filled with numerous cars and trucks. The facility is situated near a road and a body of water, with some greenery and other industrial structures visible in the background.



Production start:
January 2018

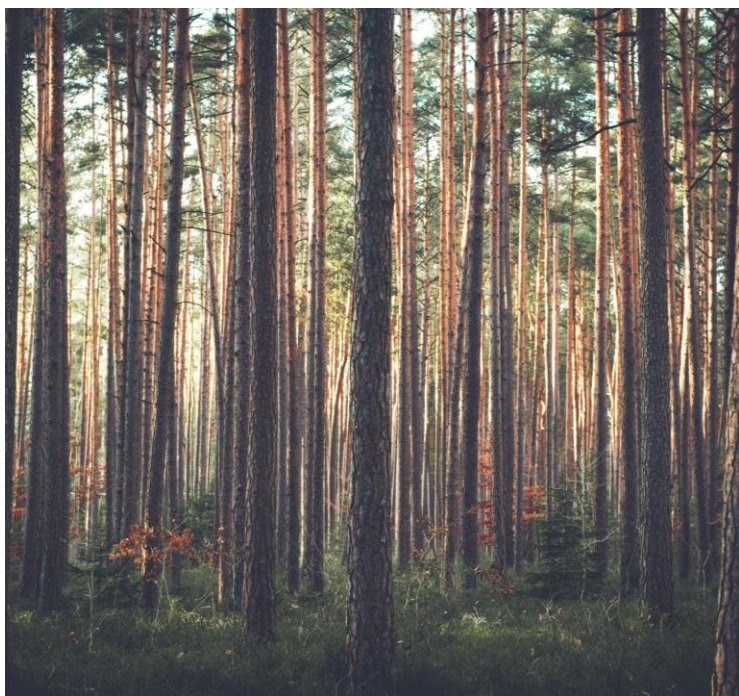


Capacity 16 volumetric elements per
working day
in June 2019

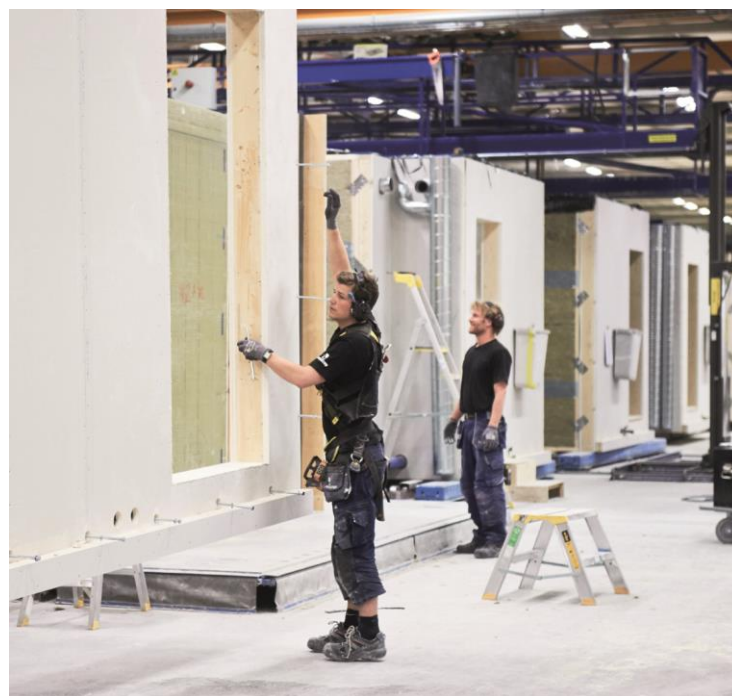
55M€

Budget 480 MSEK (55 M€)

Sustainability



environment



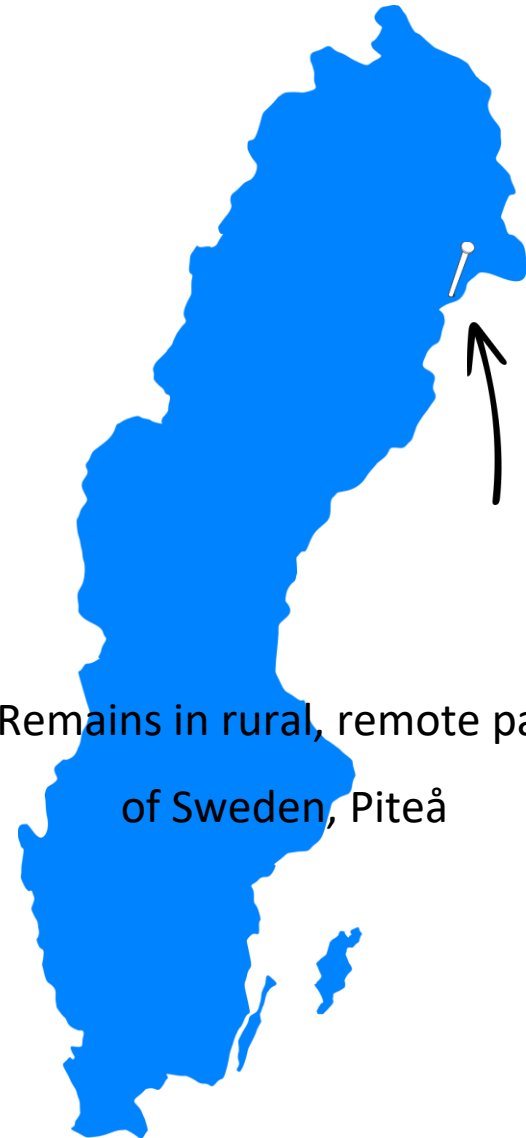
economy



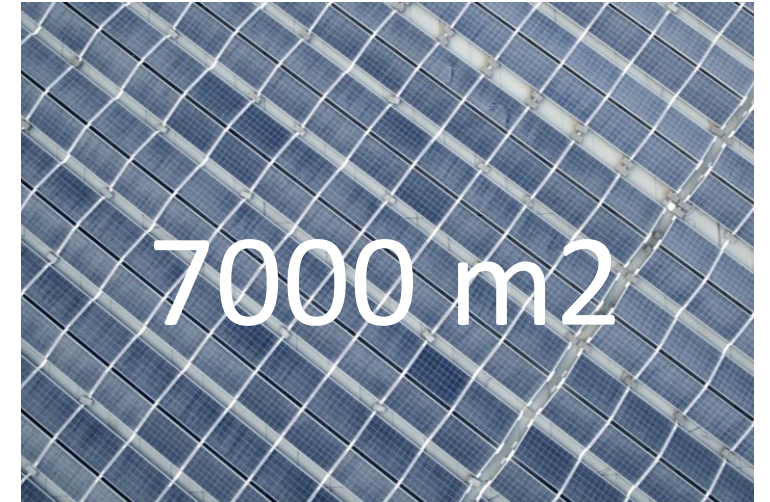
social



Logistics by
truck, train, and boat



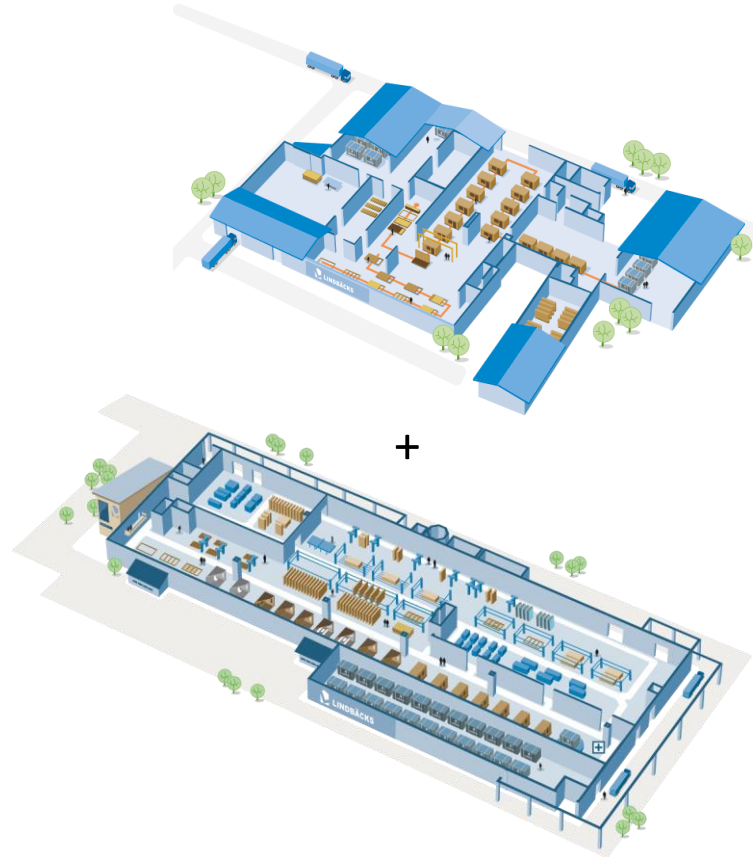
Remains in rural, remote part
of Sweden, Piteå



Solar panels on the roof and
district heating from our neighbor
SunPine AB

150

new employees excl. on-site
workers, sub contractors,
suppliers



Triple capacity to equal
2,400 dwellings/year

x3

Address market needs and reach the
goal to *triple production*
and turnover by 2020



Grand opening December 19, 2017

3 % → LULEÅ
TEKNISKA
UNIVERSITET

of the annual turnover is dedicated to *research and development* where *Luleå University of Technology* is a strong partner



Bathroom pod in glass fibre composite

- Precision cast glass-fibre composite sheets, 10 meters long, are cut into wall and floor elements at *Podcomp*, our supplier.
- Elements are glued into a moisture and waterproof shell structure, similar to a boat hull
- Tiling, ventilation ducts, and electrical wiring are preinstalled before arriving at Lindbäck's factory

Rationellt byggande.
Sunt boende.

