

# Powr-Flite®

COMMERCIAL FLOOR CARE EQUIPMENT

## MANUAL & PARTS LIST PFX1080AW...PFX1085EAW...

Model PFX1080AW & PFX1085EAW



**Powr-Flite**  
COMMERCIAL FLOOR CARE EQUIPMENT

A Tacony Company  
3101 Wichita Court • Ft. Worth, TX 76140-1710

**AMTECHUK**  
Professional Cleaning Equipment

[www.amtechuk.co.uk](http://www.amtechuk.co.uk)



WARNING: OPERATOR MUST READ AND UNDERSTAND THIS MANUAL COMPLETELY BEFORE OPERATING THIS EQUIPMENT

## IMPORTANT

### BEFORE USE READ THESE INSTRUCTIONS AND RETAIN FOR FUTURE REFERENCE

#### Introduction

The following instructions contain important information about the machine and safety advice for the operator. Equipment must be operated, serviced and maintained in accordance with the manufacturer's instructions. If in doubt contact the supplier of your machine.



**Read all instructions before using the machine**

#### Product information

The PFX1080AW, and PFX1085EAW series of carpet soil extraction machines are designed for the efficient cleaning of carpets and upholstery. This machine is for indoor use only. The machine is intended for commercial use, for example in hotels, schools, hospitals, factories, shops, offices, Rental businesses and other than normal housekeeping purposes.

#### EC DECLARATION OF CONFORMITY

Machine Type: Floor Cleaning Machine  
Model: Powr-Flite PFX1080AW...Powr-Flite PFX1085EAW...

This machine is in conformity with the following EU directives:

- Machinery Directive: 2006/42/EC
- The EMC Directive: 2004/108/EC

Applied harmonised standards:

EN60335-1, EN60335-2-68, EN55014-1, EN55014-2, EN61000-3-2, EN61000-3-3, EN62233

Amtech UK  
Unit 2 Sovereign Business Park  
Albert Drive  
Burgess Hill  
West Sussex  
RH15 9TY

David Mann  
Operations Manager  
Burgess Hill, 23/02/2016

#### Technical Specifications

Model	Powr-Flite PFX1080AW	Powr-Flite PFX1085EAW
Product code	PFX1080AW-UK	PFX1085EAW-2UK
Voltage AC(~)/ Frequency	240v 50/60Hz	240v 50/60Hz
Vacuum motor Power	1 @ 1600w	1 @ 1600w
Vacuum	6.6"	6.6"
Solution Tank Capacity	38L	38L
Recovery Tank Capacity	38L	38L
In-line Heater	-	3000kw
Pump type	Shur-flo	Cat Pump
Pump Power	.25hp	.75hp
Pump Pressure	100psi	500psi
Water Lift	673 peak airwatts	673 peak airwatts
Dimensions (L x W x H)	21" x 29" x 35"	21" x 29" x 35"
Weight	43kg	46kg
Cable Length	12" pigtail	12" pigtail
Warranty	1yr parts labour	1yr parts labour

- Above dimensions are approx. Since the company's policy is to continuously improve the product, there could be changes without prior notice.

#### Waste Electrical & Electronic Equipment (WEEE)



Do not dispose of this device with unsorted waste. Improper disposal may be harmful to the environment and human health. Please refer to your local waste authority for information on return and collection systems in your area.

#### IMPORTANT SAFETY ADVICE

The safety information described in this manual provides basic precautions and supplements standards in force in the country where the machine is used.



This symbol warns the operator of hazards and unsafe practices which could result in severe personal injury or death.



**WARNING** - to reduce the risk of injury, electric shock or fire.

1. This machine must only be used for the manufacturer's approved application as described in this manual.
2. The machine must be unpacked and assembled in accordance with these instructions before connecting to the electrical supply.
3. Operators must be fully trained in the use of the machine in accordance with these instructions, able to perform regular user maintenance and the correct selection of accessories.
4. Operators should be physically capable to manoeuvre, transport and operate the machines.
5. Operators should be able to recognise unusual operation of the machine and report any problems.
6. Only genuine accessories and spare parts provided with the machine or those approved by the manufacturer should be used. All repairs must be performed by a qualified service agent.
7. Do not use without filters in place.
8. Do not modify the machine from its original design.
9. Only use the machine on firm level surfaces. **DO NOT** use on a gradient or more than 2% slopes.
10. **DO NOT** use on rough uneven surfaces e.g. industrial or coarse concrete surfaces.
11. **DO NOT** use outdoors e.g. on patios, decks or rough surface.



12. **WARNING** Do not fill machines with water hotter than 40°C
13. **DO NOT** use diesel/petrol or corrosive detergents to wash floors, even if diluted.
14. This machine is not intended for use by persons (including children) with reduced physical, sensory or mental capabilities, or lack of experience and knowledge, unless they have been given supervision or instruction concerning use of the machine by a person responsible for their safety.
15. Keep children and unauthorised persons away from the machine when in use. Do not use as a toy.
16. The machine must be kept clean and in good condition with regular inspections of the lead and plug for signs of any damage. If any parts are damaged they shall only be replaced by an approved part by the manufacturer, its service agent or a similar qualified person in order to avoid a hazard.

#### ELECTRICAL HAZARD



17. **CAUTION** - This machine is for dry indoor use only and should not be used or stored outdoors in wet conditions.
18. **DO NOT** use where hazardous dust is present.
19. **DO NOT** use in an explosive atmosphere.
20. **DO NOT** pick up or use near flammable or combustible fluids, hazardous dusts or vapours.



21. **CAUTION** - If it is suspected that there is hazardous dust or flammable materials stop cleaning the area immediately and consult your superior.
22. **DO NOT** use to clean up any burning or lighted materials such as cigarettes, matches, ashes or other combustible objects.
23. Take care when using a machine near the top of stairs to avoid overbalancing.
24. **DO NOT** put any object into openings. **DO NOT** use with any opening blocked; keep free of dust, debris and anything that may reduce airflow.

25. **DO NOT** cover the machine when in use.
26. Keep hair, loose clothing, hands, feet and all other parts of the body away from openings and moving parts.
27. **DO NOT** use if it has been damaged, left outdoors or dropped in water.
28. **DO NOT** run the machine dry, as this could damage the floor surface or the machine itself.
29. Never use excessive foaming or highly corrosive cleaning solutions.
30. **DO NOT** operate the machine with a damaged supply lead or plug, or after the machine malfunctions or is damaged in any way. Contact an authorised Service Agent for repair or adjustment.
31. Only replace the supply cord with the type specified in the instruction manual.
32. This machine should always be connected to a fully earthed power supply of the right voltage and frequency.
33. **DO NOT** leave machine running unattended.
34. **DO NOT** leave the machine connected to the electricity supply when not in use, always remove the plug from the socket-outlet.
35. Switch off the machine before removing the plug.
36. When unplugging, pull the plug, not the supply cord.
37. The machine shall be disconnected from its power source when not in use and before commencing cleaning of the machine or maintenance and when replacing parts or accessories, by removing the plug from the socket-outlet.
38. **DO NOT** pull or carry by the supply cord. **DO NOT** use cord as a handle, close door on cord or pull cord around sharp edges or corners.



39. **WARNING:** Keep the supply cord clear of moving parts.
40. **DO NOT** kink or twist the supply cord and keep cord away from heated surfaces.
41. **DO NOT** operate switches or touch the mains plug with wet hands as this may cause electric shock.
42. The power supply cord plus any extension leads should not exceed 30 metres in total. The cross section of an extension cable wiring must be at least 2.5mm<sup>2</sup>.



43. **WARNING:** Should water emit from the machines exhaust switch off immediately and refer to instructions for using the machine.

#### Controls: PFX1080AW & PFX1085EAW

- 1 Vacuum
- 2 Pump
- 3 Heater



## Preparing the machine



**WARNING - Before undertaking assembly or changing of accessories/ tools switch off machine and unplug from the electricity supply.**

Fill the fresh water solution tank with water and approved carpet cleaning chemical (Fig 1) **DO NOT** overfill solution tank.

When inserting the power cord ensure that it is quarter turned clockwise to ensure it is locked in place.

NOTE: Ensure chemical is diluted correctly according to instructions on container.



**Fig 1 Solution fill hole**  
**PFX1080AW & PFX1085EAW**

## Operation

### Priming and starting the machine

#### PFX1080AW

- Connect the solution and vacuum hoses to the machine and the other end to either the carpet or upholstery wand / tool.
- Switch on the pump and one by one the vacuum switches to begin operation.

#### PFX1085EAW

- Connect the priming hose into the solution outlet and the other end into the solution tank.
- Switch on the heater (if required) and pump on to circulate the solution to remove air from system. Let the heater heat up for approximately 3 to 5 minutes. Warm water can be used to aid cleaning however this can increase the risk of colour fastness and carpets to shrink. NOTE: When the heater is on, the orange indicator light on the switch panel will be lit.
- Remove the prime hose and connect the vacuum and solution hose to the machine and the other end to either the carpet or upholstery tool.
- Adjust the pressure gauge to the required level.
- Switch the vacuum switches on one by one to begin cleaning.

NOTE: use only one vacuum for more delicate fabrics and upholstery.

### Using the machine

- Using the wand drag the head slowly over the carpet whilst at the same time squeezing the solution lever thus releasing the spray. Repeat using overlapping strokes. There is no need to apply downward pressure to the wand as no improvement in performance is obtained. For best results, clean an area approx. 1 metre x 1 metre as above, and then go over the same area with only the vacuum running, and not releasing any solution. Proceed to the next area.
- The machine should be switched off periodically to check there is no excess foam in the recovery tank. If foam is present, either add defoamer or if using an all in one product, empty the recovery tank, rinse out and continue, checking regularly for foam build up.
- When solution spray ceases the solution tank is empty. Switch off the machine, empty the recovery tank and refill the solution tank.

**IMPORTANT** – Ensure recovery tank is emptied whenever solution tank is filled.

**IMPORTANT** – Do not run the pump motor when the solution tank is empty, as this will damage the motor.

**IMPORTANT** – Should solution seep from the drain hose cap, stop work immediately and drain recovery tank.

## Cleaning Carpet

**Colour fastness** - Before using cleaning solution or pre-spotter, test carpet for colour fastness on an inconspicuous area. Apply solution to a small piece of clean white material or tissue, and then rub on carpet vigorously. Excessive amounts of dye showing on the material indicate that the colours are not fast, and the carpet should not be wet cleaned. Please note temperature of cleaning solution will also affect colour fastness.

- Move furniture around to give a clear working area. Cover bottoms of furniture legs where necessary (aluminium cooking foil is ideal). Pin up curtains and drapes.
- Vacuum carpet thoroughly to remove any residual dust or debris.
- Areas of heavy carpet soiling can be removed more easily if first treated with a concentrated cleaning solution or pre-spotting solution.
- Rate of cleaning will depend upon the thickness of the carpet and the degree of dirt in the area being cleaned.
- **Do not** over wet carpets. Carpets may shrink if they are over-wet or not properly fixed down.

## Cleaning Stairs



**CAUTION** – when cleaning on stairs exercise great care to ensure that the machine is stable and cannot overbalance, possibly causing injury to either operator or third party. Use the upholstery tool for cleaning in place of the wand assembly.

## Cleaning Upholstery

This is done in the same way as carpet cleaning except using the upholstery tool in place of the wand assembly. Cleaning is achieved using a gentle dragging motion of the upholstery tool over the material.

- An inconspicuous area of the item to be cleaned should always be tested for colour fastness prior to cleaning. Should doubt exist as to the suitability of the fabric for wet cleaning, the chemical manufacturer should be consulted for advice.
- Loose cushions should be removed and cleaned separately.
- **Do not** over-wet upholstery

## When Cleaning is Finished

### Draining and Cleaning

- When the recovery tank is full, empty by using the drain hose attached to the machine (Fig 2). If a bucket is used to empty the recovery tank, **DO NOT** use the same bucket to fill the solution tank as this can result in putting dirt and grit into the solution line that can block filters, orifices, and generally degrade the solution line system (do not reuse solution). Take care if using a bucket to empty the machine. Stop flow before bucket overflows. Empty bucket and repeat.
- To empty solution tank, detach the wand from the end of the vacuum hose and insert the vacuum hose into the solution tank. Turn the vacuum switches to the "on" position and transfer solution to recovery tank and dispose of as outlined above. Clean recovery filter at this time.



Fig 2 Drain hose  
PFX1080AW & PFX1085EAW

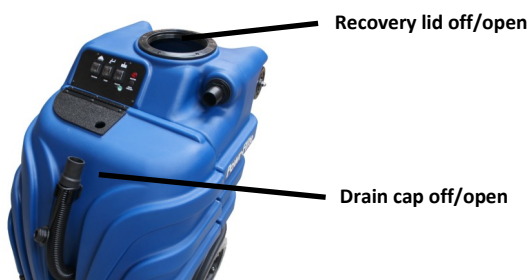
### Transporting the machine

Incorrect lifting techniques may result in personal injury. We advise that the manual handling regulations are followed. **DO NOT** expose the machine to rain or moisture. When transporting the machine ensure that all components, tanks and removable parts are securely fastened, and that the supply cord and plug are not trailing. **DO NOT** lift or transport the machine whilst containing liquid. Take extreme care when moving the machine up or down steps or stairs.

### Storage

- Always switch off, empty, wipe down and dry the machine after use.
- Both the solution and recovery tanks should be emptied and flushed out with clean water to ensure the seals and pumps are free from any cleaning detergents.
- We recommend running the vacuum motor for approx. 2 minutes after use to eliminate condensation within the machine body, thus ensuring the motor and particularly the bearings remain dry.
- Store machine with recovery tank lid removed and dump valve open (Fig 3). Deodoriser may be left in the tank to prevent unpleasant odours.

Fig 3 Recovery lid and drain cap



## Storage continued

- Wrap supply cord around handle ensuring that plug is not trailing on the floor.
- Store the machine in a dry indoor area only.

### Maintenance



**WARNING** - Before undertaking maintenance operations or adjustments switch off machine and unplug from the electricity supply.



**IMPORTANT** - All other servicing and repairs should only be performed by a qualified service agent.

**IMPORTANT** - Should the machine fail to operate please refer to the fault diagnosis section in the back of this instruction manual. If the problem / remedy is not listed please contact Amtech UK Customer Service Department for rapid attention. The machine requires minimum maintenance apart from the following checks by the operator prior to use:

- **DO NOT** use aggressive detergents, acid, lye etc. during cleaning and washing and take particular care with electrical parts.
- Supply cord - Regularly inspect sheath, plug and cord anchorage for damage or loose connection. Only replace the supply cord with the type specified in these instructions.
- Solution tank – Check filter is clean and undamaged. A damaged or missing filter must be replaced or damage to pump head and spray jet could occur.
- Lubricate brass quick disconnects and drain valves with a quality lubricant such as WD-40.
- Flush solution systems after use with clear, clean water. (A white vinegar solution may also be used). This will counter-act hard water and alkaline deposits and aid in keeping orifices clean.
- **DO NOT** allow fluid either in solution or waste tank to sit overnight. The unit should be emptied and cleaned daily.
- Clean the filter in the solution tank, the filter on the vacuum stack in recovery tank daily.
- **DO NOT** use the same bucket to fill solution tank that is used to remove waste from recovery tank.
- When the unit is not in use, leave the recovery tank lid open.
- At the end of each day, run the vacuum for 2 minutes with lid open.
- Keep the equipment clean, both inside and out.

## After sales service

Powr-Flite machines are high quality machines that have been tested for safety by authorised technicians. It is always apparent that after longer working periods, electrical and mechanical components will show signs of wear and tear or ageing. To maintain operational safety and reliability the following service interval has been defined: Every year or after 250 hours. Under extreme or specialised conditions and/or insufficient maintenance, shorter maintenance intervals are necessary. Use only original Powr-Flite spare parts. Use of other spare parts will invalidate all warranty and liability claims. Should you require after sales service please contact the supplier from whom you purchased the machine, who will arrange service. Repairs and servicing of Powr-Flite products should only be performed by trained staff. Improper repairs can cause considerable danger to the user.

## Guarantee

Your product is guaranteed for one year from the date of original purchase, or hire purchase, against defects in materials or workmanship during manufacture. Within the guarantee period we undertake at our discretion, to repair or replace free of charge to the purchaser, any part found to be defective, subject to the following conditions:

### CONDITIONS

1. Claims made under the terms of the guarantee must be supported by the original invoice/bill of sale issued at the time of sale, or the machine Serial No.
  2. For claims under this guarantee contact the supplier from whom you purchased the product who will arrange the appropriate action. **DO NOT** initially return the product as this could result in transit damage.
  3. Neither Powr-Flite nor its distributor shall be liable for any incidental or consequential loss.
  4. This guarantee is governed by the laws of England.
  5. This guarantee does not cover any of the following:
    - Periodic maintenance, and repair or replacement of parts due to normal wear and tear.
    - Damage caused by accident, misuse or neglect, or the fitting of other than genuine Powr-Flite parts.
    - Defects in other than genuine Powr-Flite parts, or repairs, modifications or adjustments performed by other than a Powr-Flite service engineer or authorised service agent.
    - Costs and risks of transport relating directly or indirectly to the guarantee of this product.
    - Consumable items such as, carbon brushes, switches, filters, electric cable, couplings and vacuums. The purchaser is assured that meticulous care has been exercised in the selection, assembling and testing of these parts before shipping.
- This guarantee does not affect your statutory rights, or your rights against the supplier arising from their sales or purchase contract. Powr-Flite policy is one of continual product development and we reserve the right to alter specifications without prior notice.

## Shipping and Damage

This equipment is thoroughly inspected, tested, and packaged to provide equipment in good operating condition. It is beyond our control after the equipment is turned over to a freight carrier. The freight carrier received and signed for the equipment in good condition. Consequently, it is most important to protect your interest by carefully complying with the following instructions: Please inspect your cartons for any damage (including concealed damage) that might have occurred during shipment. Any damage is the responsibility of the freight carrier and should be reported to the freight carrier immediately. It is your responsibility to issue a claim and to receive compensation from the freight carrier for any damage done in transit. Damage of this sort is not warranted.



**WARNING:** Read All instructions, warning and cautions before using. These guidelines are presented for your protection and convenience. Please read them carefully, since failure to heed these precautions could result in discomfort or injury. When using an electrical appliance, basic safety precautions should always be followed. Please read and store these instructions for future use.



TO AVOID FIRE, DO NOT USE WITH FLAMMABLE OR COMBUSTIBLE LIQUID.

**Powr-Flite**  
COMMERCIAL FLOOR CARE EQUIPMENT

*A Tacony Company*  
3101 Wichita Court • Ft. Worth, TX 76140-1710

### Electrical System

Problem	Possible Cause	Solution
No electrical power.	<ol style="list-style-type: none"> <li>1) Defective power cord.</li> <li>2) circuit breaker off.</li> <li>3) fuse blown.</li> </ol>	<ol style="list-style-type: none"> <li>1) Replace.</li> <li>2) Turn circuit breaker on.</li> <li>3) Replace the fuse.</li> </ol>
Switch is turned on. Intermittent power to motor(s).	<ol style="list-style-type: none"> <li>1) Faulty electrical cable.</li> <li>2) Defective switches.</li> <li>3) Loose terminal or discoloured terminal connections.</li> </ol>	<ol style="list-style-type: none"> <li>1) Replace or repair.</li> <li>2) Replace.</li> <li>3) Replace.</li> </ol>
Electric shock.	<ol style="list-style-type: none"> <li>1) Equipment not grounded.</li> </ol>	<ol style="list-style-type: none"> <li>1) Locate grounded outlet.</li> </ol>

### Vacuum System

Vacuum motor on. Little or no vacuum on wand head.	<ol style="list-style-type: none"> <li>1) Drain hose open.</li> <li>2) Defective vacuum hose.</li> <li>3) Kinks in vacuum hose.</li> <li>3) Vacuum disconnected.</li> </ol>	<ol style="list-style-type: none"> <li>1) Close drain hose.</li> <li>Recovery tank lid must be closed.</li> <li>2) Repair or replace hose.</li> <li>3) Open machine connect vacuum hose to recovery tank.</li> </ol>
Not enough vacuum power at the machine.	<ol style="list-style-type: none"> <li>1) Damaged recovery tank lid.</li> <li>2) Lint clogging ball type shutoff screen.</li> <li>3) Vacuum hose connection between stand pipe and vacuum motor.</li> <li>4) Vacuum motor exhaust blocked.</li> <li>5) Cords not plugged into separate circuits.</li> </ol>	<ol style="list-style-type: none"> <li>1) Replace.</li> <li>2) Remove screen, clean out fibres and accumulated dirt.</li> <li>3) Check for leaks around clamps and cuffs (tighten). Replace damaged hose(s).</li> <li>4) Check air flow by removing hose from machine and fell the exhaust under the machine. remove obstruction.</li> <li>5) Relocate one cord to a different room.</li> </ol>
Motor running and no vacuum at all. No exhaust from the blow port.	<ol style="list-style-type: none"> <li>1) Faulty vacuum motor.</li> <li>2) Water shutoff closed.</li> </ol>	<ol style="list-style-type: none"> <li>1) Replace.</li> <li>2) Clean water shutoff screen.</li> </ol>
Premature closing of ball type shutoff. Ball type shutoff failing to release after recovery tank is drained.	<ol style="list-style-type: none"> <li>1) Dirty or clogged shutoff filter screen.</li> <li>2) Ball coated with detergent or other foreign material.</li> <li>3) Screen slightly out of round.</li> </ol>	<ol style="list-style-type: none"> <li>1) Remove and clean screen.</li> <li>2) Remove and rinse ball with clean water.</li> <li>3) Bend screen slightly by hand until there is an obvious space between ball and inside of screen.</li> </ol>

### Vacuum System

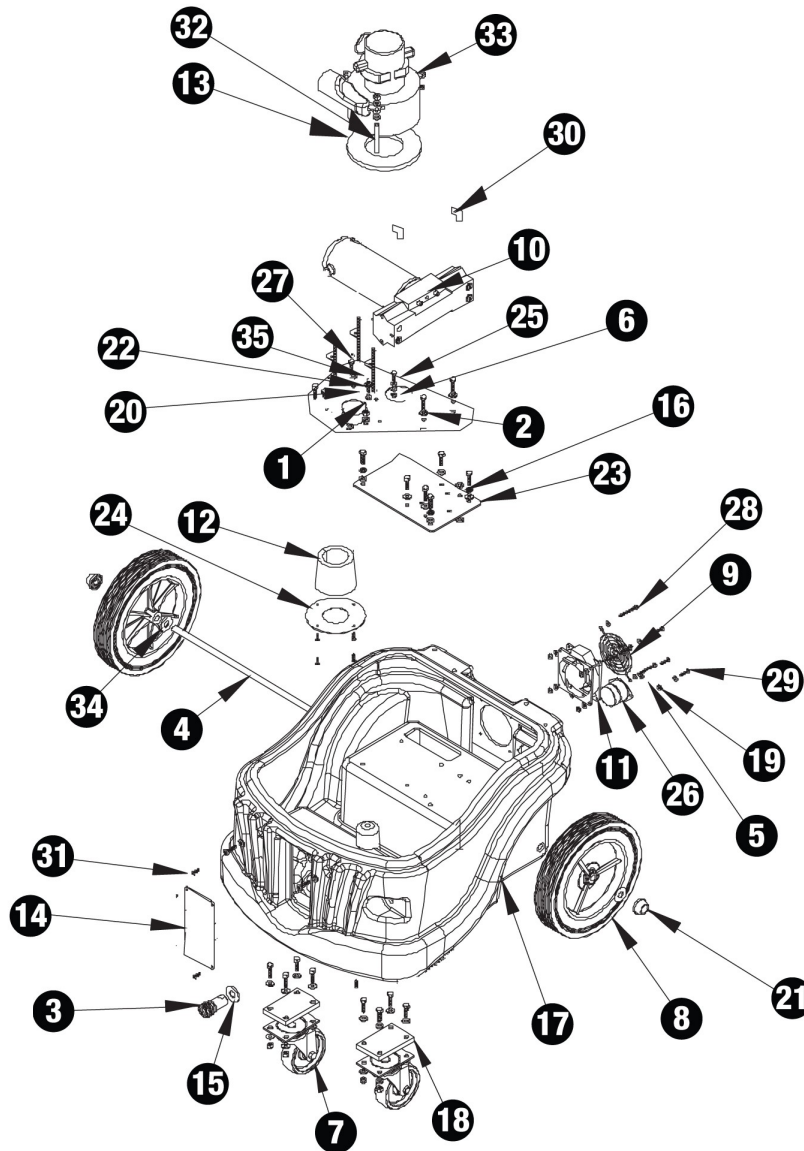
Problem	Possible cause	Solution
Foam/dirty solution coming out of vacuum exhaust port.	<ol style="list-style-type: none"> <li>1) Foam from carpet by-passing water shutoff.</li> <li>2) Elbow in vacuum tank is not positioned correctly.</li> </ol>	<ol style="list-style-type: none"> <li>1) Use additional defoamer.</li> <li>2) The elbow should be pointed directly at the side wall of the tank away from the ball type shut-off.</li> </ol>

### Solution System

Pump motor on, no spray through jets	<ol style="list-style-type: none"> <li>1) Clogged or faulty solution control valve.</li> <li>2) Clogged or faulty quick disconnect on housing.</li> </ol>	<ol style="list-style-type: none"> <li>1) Check intake on valve and remove lint or foreign material.</li> <li>2) Depress plunger on solution hose against inside wall of solution tank. If solution is flowing at this point, the system is OK. If no solution flows, check the quick disconnect for lint and other foreign matter.</li> <li>3) Clean jets on the wand or tool.</li> </ol>
Uneven spray from jet. Spray weak or uneven.	<ol style="list-style-type: none"> <li>1) Clogged strainer in solution tank.</li> <li>2) Clogged jet.</li> </ol>	<ol style="list-style-type: none"> <li>1) Unscrew strainer and remove lint and any other foreign material from screen.</li> <li>2) Remove and clean.</li> </ol>
Leaking or stuck solution valve.	<ol style="list-style-type: none"> <li>1) Foreign material in valve.</li> <li>2) Loose brass hex nut.</li> <li>3) Valve worn or seals worn.</li> </ol>	<ol style="list-style-type: none"> <li>1) Remove brass hex plug, clean valve and replace.</li> <li>2) Reseal hex and plug.</li> <li>3) Replace worn parts with solution valve repair kit.</li> </ol>
Pump motor not working.	<ol style="list-style-type: none"> <li>1) Loose wiring.</li> <li>2) Defective pump pressure switch.</li> <li>3) Motor burnout</li> </ol>	<ol style="list-style-type: none"> <li>1) Tighten wiring.</li> <li>2) Replace with new pressure switch assembly.</li> <li>3) Replace pump motor.</li> </ol>
Pump pressure low.	<ol style="list-style-type: none"> <li>1) Clogged filter screens.</li> <li>2) Defective rectifier or motor.</li> <li>3) Pump not primed.</li> </ol>	<ol style="list-style-type: none"> <li>1) Unscrew strainer in solution tank remove lint and any other foreign material from screen.</li> <li>2) Replace.</li> <li>3) Plug priming hose into solution connection and place end in solution tank. Run pump for 4 minutes.</li> </ol>
Pump pressure varies.	<ol style="list-style-type: none"> <li>1) Worn carbon brushes.</li> <li>2) Defective pump pressure control switch.</li> </ol>	<ol style="list-style-type: none"> <li>1) Replace brushes.</li> <li>2) Replace.</li> </ol>

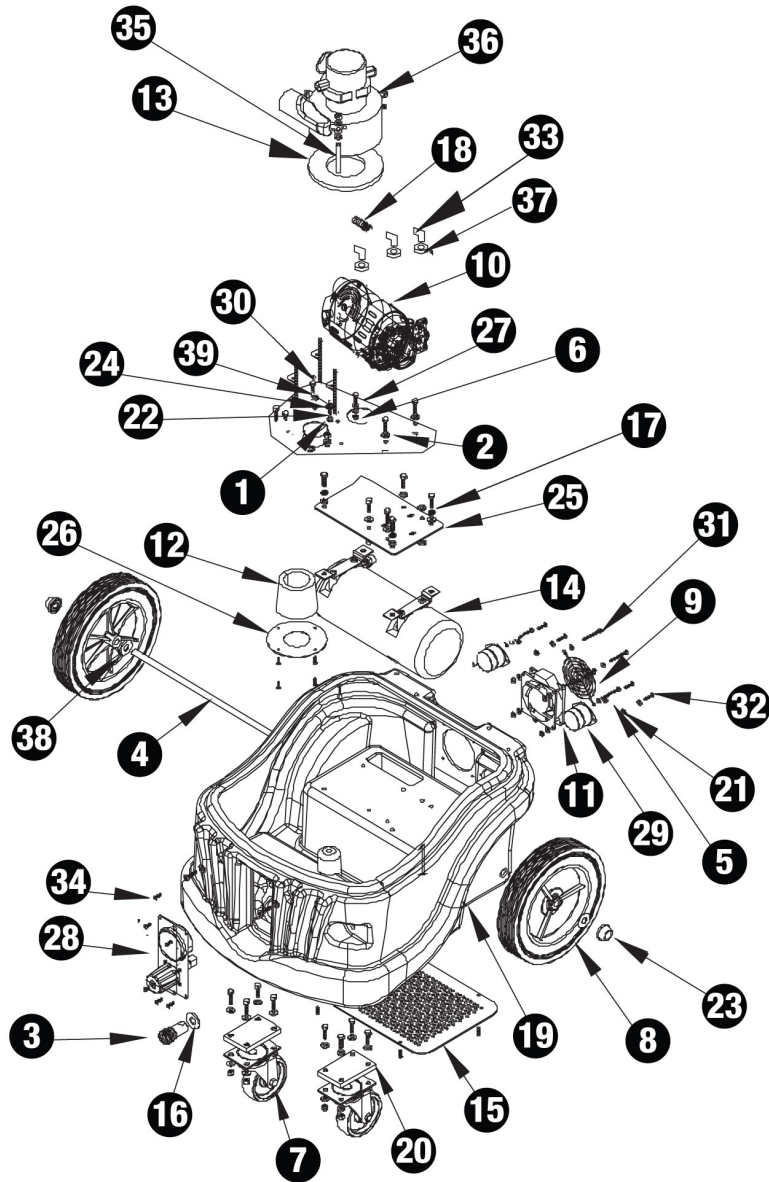


PFX1080AW PARTS DRAWING BASE ASSEMBLY



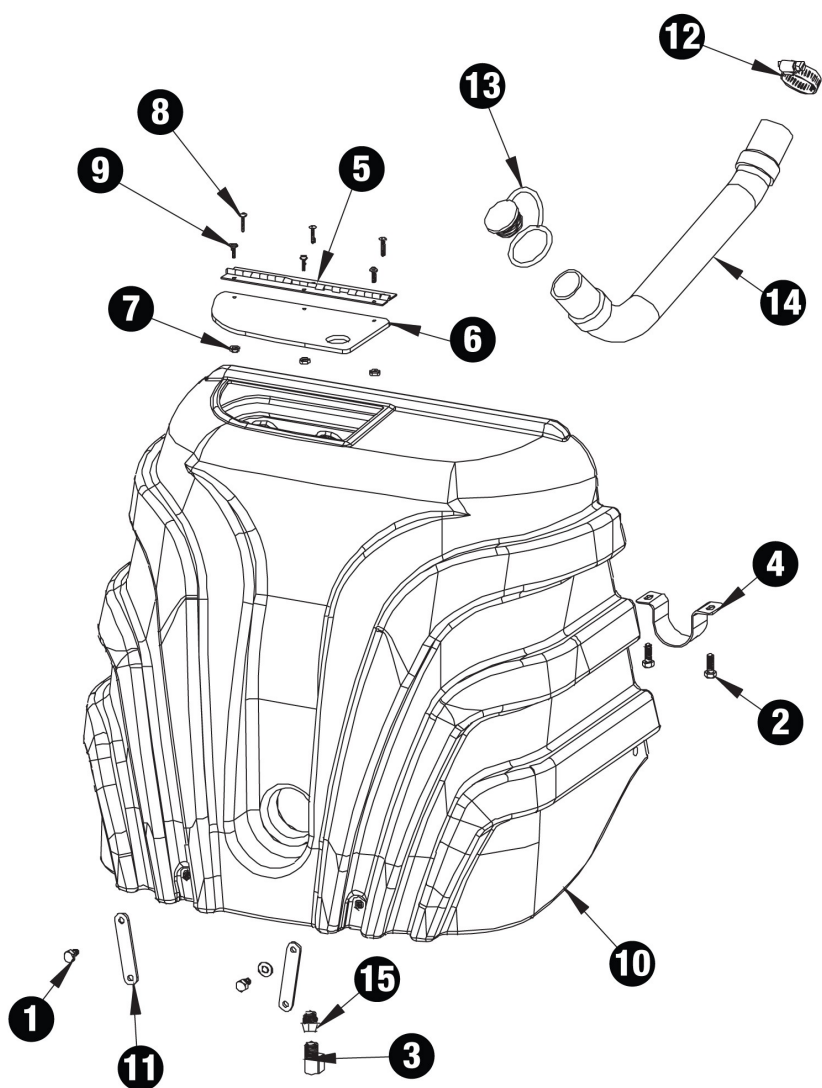
Item	Description	Part No	Item	Description	Part No
1	10/-24 All thread	72000A	21	Nut push 1/2	7GL002
2	Washer 5/16 flat	X8218	22	Nut 10-24	7BF003
3	1/4 Quick disconnect Female	PX6	23	Plate heater/pump	X9465
4	Axle rear	X9463	24	Plate muffer	X9471
5	Nut 8-32	X8260	25	Plate vacuum	X9868
6	Bolt 1/4 -20 1"	X8211	26	Receptacle flanged	X9429
7	Caster 4" black	X9153	27	Screw sheet metal	72387A
8	Wheel 10"	X9063	28	Screw 8-32 x 1 3/4	7DW001
9	Cover fan	72702A	29	Screw 8-32 3/4	72703A
10	Pump 100psi	SF814-2	30	Fitting nylon elbow	PX15
11	Fan cooling 230v	72701A	31	Screw 1/4-20 phil pan	7BS003
12	Muffer	X9470	32	Spacer vacuum motor	72651B
13	Gasket vacuum motor seal	X9696	33	Vacuum motor 6.6" 230v	72855B
14	Plate 100psi	X9494	34	Washer 1/2 flat	7CM007
15	Washer 1/2 flat	X8239	35	Washer 10 flat	X8225
16	Nut 1/4-20	7BF004			
17	Base Mid size extractor	X1050-120			
18	Spacer, caster	72783A			
19	Nut 8-32	X8256			
20	Nut 10-32	7BF008			

PFX1085EAW PARTS DRAWING BASE ASSEMBLY



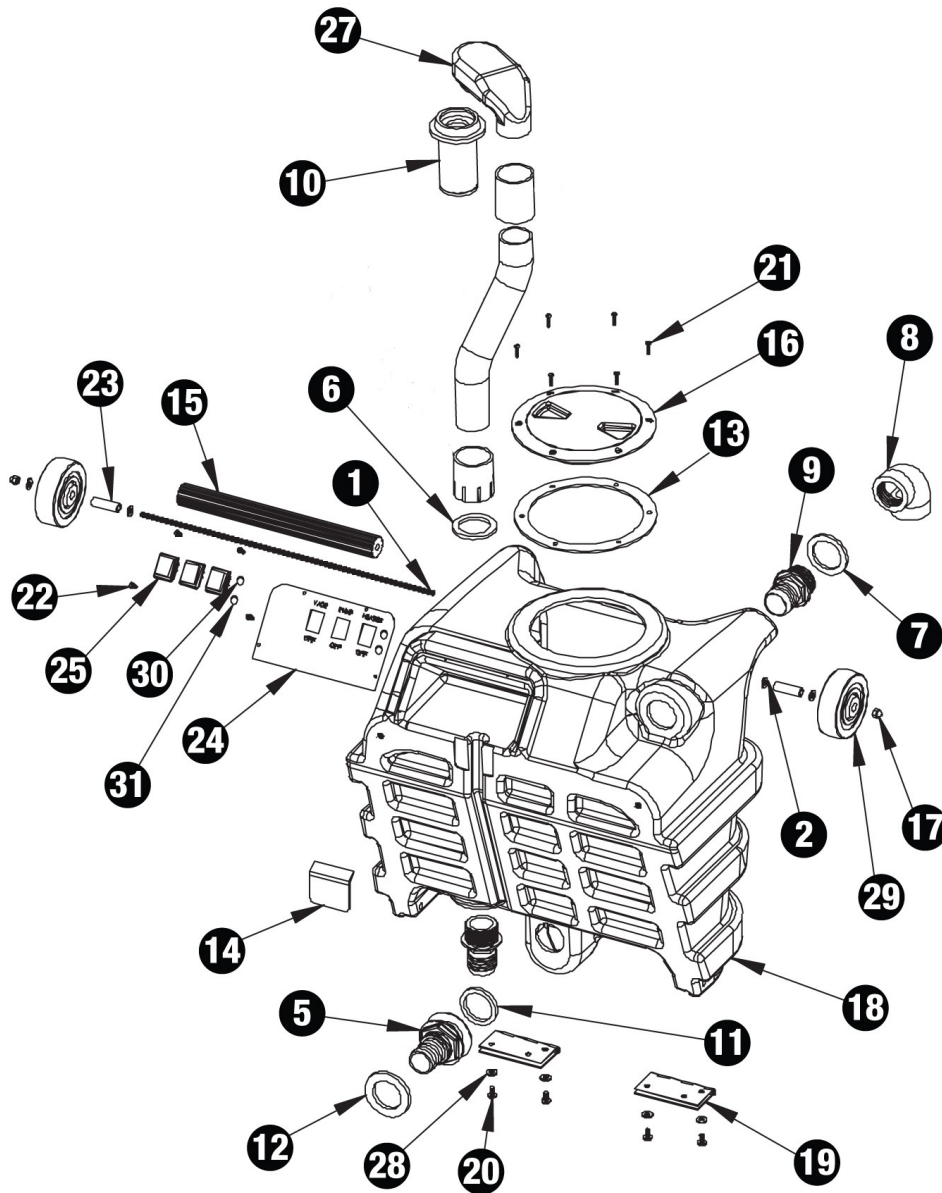
Item	Description	Part No	Item	Description	Part No
1	10/-24 All thread	72000A	21	Nut 8-32	X8256
2	Washer 5/16 flat	X8218	22	Nut 10-32	7BF008
3	1/4 Quick disconnect Female	PX6	23	Nut push 1/2	7GL002
4	Axle rear	X9463	24	Nut 10-24	7BF003
5	Nut 8-32	X8260	25	Plate Heater/pump	X9465AW
6	Bolt 1/4 -20 1"	X8211	26	Plate muffler	X9471
7	Caster 4" black	X9153	27	Plate vacuum	X9868
8	Wheel 10"	X9063	28	Pressure gauge	72758A
9	Cover fan	72702A	29	Receptacle flanged	X9429
10	CAT Pump 500psi	CP500AC	30	Screw sheet metal	72387A
11	Fan cooling 230v	72701A	31	Screw 8-32 x 1 3/4	7DW001
12	Muffler	X9470	32	Screw 8-32 3/4	72703A
13	Gasket vacuum motor seal	X9696	33	Elbow	PC49
14	Heater 3000kw 240v	PF3000B	34	Screw 1/4-20 phil pan	7BS003
15	Heater cover	X9464	35	Spacer vacuum motor	72651B
16	Washer 1/2 flat	X8239	36	Vacuum motor 6.6" 230v	72855B
17	Nut 1/4-20	7BF004	37	Reducer 3/8 to 1/4	PC20
18	Barb 1/2H 3/8M	PX85	38	Washer 1/2 flat	7CM007
19	Base Mid size extractor	X1050-120	39	Washer 10 flat	X8225
20	Spacer, caster	72783A			

PFX1080AW & PFX1085EAW PARTS DRAWING SOLUTION TANK



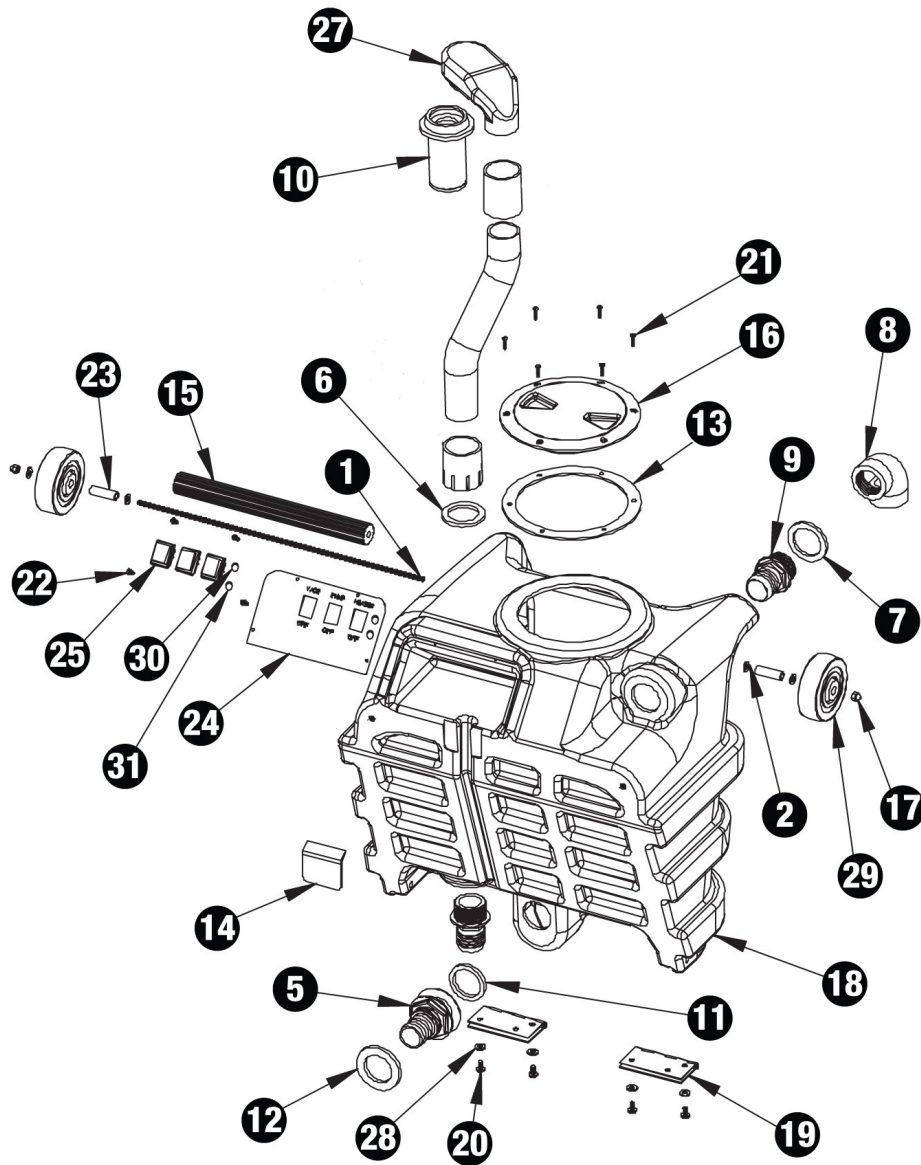
Item	Description	Part No
1	Screw 1/4-20	7BS003-BLK
2	Screw 1/4-20	7BS003
3	Elbow	PC49
4	Clamp	X9448
5	Hinge solution tank	X9450
6	Lid solution tank	X9451
7	Nut 8-32	X8256
8	Screw sheet metal 8 x 3/4	X8261
9	Screw 8-32 1/2	X8278
10	Solution tank	X1052BLUE
10	Solution tank	X1052BLACK
11	Strap front	X9444
12	Clamp	7DL005
13	Plug drain hose	PAS36
14	Drain hose	PAS37

PFX1080AW PARTS DRAWING RECOVERY TANK



Item	Description	Part No	Item	Description	Part No
1	All thread 5/16-18	X9452	18	Recovery tank	X1051BLUE
2	Washer 1/4	X8235	18	Recovery tank	X1051BLACK
5	Hose barb 1.5"	72677A	19	Tank hinge	X9014
6	Dump valve gasket	PX14	20	Screw 1/4-20	7B5003
7	Valve gasket	PX14A	21	Screw 8x5/8 black	72387A
8	Plastic elbow	PX11A	22	Screw 8x5/8 black	72387A
9	Hose barb 1.5"	PX25	23	Spacer	72486A
10	Float cage	PX31	24	Switch plate	X9801AW
11	Gasket drain inner	72679A	25	Switch on/off	PX87
12	Gasket drain outer	72680A	27	Vacuum tube	72628A
13	Gasket lid	PX103G	28	Washer	X8858
14	Gasket switch plate	X9484	29	Wheel black 4"	X8025
15	Handle	X9453	30	Hole plug switch hole	X9173
16	Lid clear 6"	PX103G	31	Plug 1/2 black nylon	71804A
17	Nut 5/16	72148A			

PFX1085EAW PARTS DRAWING RECOVERY TANK



Item	Description	Part No	Item	Description	Part No
1	All thread 5/16-18	X9452	18	Recovery tank	X1051BLUE
2	Washer 1/4	X8235	18	Recovery tank	X1051BLACK
5	Hose barb 1.5"	72677A	19	Tank hinge	X9014
6	Dump valve gasket	PX14	20	Screw 1/4-20	7BS003
7	Valve gasket	PX14A	21	Screw 8x5/8 black	72387A
8	Plastic elbow	PX11A	22	Screw 8x5/8 black	72387A
9	Hose barb 1.5"	PX25	23	Spacer	72486A
10	Float cage	PX31	24	Switch plate	X9801AW
11	Gasket drain inner	72679A	25	Switch on/off	PX87
12	Gasket drain outer	72680A	27	Vacuum tube	72628A
13	Gasket lid	PX103G	28	Washer	X8858
14	Gasket switch plate	X9484	29	Wheel black 4"	X8025
15	Handle	X9453	30	Plug 1/2 black nylon	71804A
16	Lid clear 6"	PX103G	31	Red light	72806A
17	Nut 5/16	72148A			



**WARNING - This additional information DOES NOT represent the manufacturer.**

**CAUTION:** This information has been compiled independently by Amtech UK and is for guidance purposes only.

## The cleaning process

### 1<sup>st</sup> Vacuum

Vacuum the carpet thoroughly to remove the loose soils. Between 60% and 70% of the soil is loose and can be removed with a vacuum cleaner. Use a vacuum cleaner with a brush roll which will beat the fibre and loosen the soil for better removal. It will also help stand the carpet pile.

### 2<sup>nd</sup> Pre-spray

Pre-spray the carpet with **Microsplitter** (Premium, Extreme, or Fineline) after vacuuming as the carpet pile will be free from loose soil and debris this will allow the pre-spray to penetrate deeper into the fabric breaking down the bond between the soil and fibre. After pre-spraying leave the **Microsplitter** for five minutes to migrate deep into the fibres.

### Agitation:

In heavy soiled situations agitation may be required. Use either a manual brush/carpet rake or an electric rotary/counter rotating brush machine to agitate the **Microsplitter** into the fabric.

### 3<sup>rd</sup> Rinse

Rinse the soil and product from the carpet with the Wonder wand and extraction machine.



### Use the Wonder wand correctly:

It's quite a common occurrence to see wand operators standing in a side on position with their hand on the front handle. This position is perfectly natural and looks right for the task, however there are 3 fundamental problems with this stance.

Number 1: It can create down pressure which can compress the carpet fibres this will make it more difficult to remove the soil as the fibre becomes compact and tight.

Number 2: It will limit your cleaning pass and movement.

Number 3: The posture can cause back ache and fatigue, being hunched over for long periods.

With the Wonder wand you should stand behind the wand facing forward with only your trigger hand on the wand. Lift the handle so the front of the Wonder wand is vertical. This is the position you should stay in throughout the cleaning process.

The cleaning process is achieved by squeezing the trigger while walking backwards. (Try to cover a distance of about one meter). Release the trigger and continue backwards for about five inches.

Lower the handle and push the wand forward on the roller, walking forwards next to your starting point. (Make sure you have moved over so you don't clean the same area again). Repeat this process until you have finished the area to be cleaned.

### 4<sup>th</sup> Stains

Tackle any remaining stains with the correct spotting treatment.

**Never** tackle stains prior to the cleaning process. If you are unsure what the stain is use the stain removers in number order until the stain has been removed.

**Always** use ZIP IT **Microsplitter** first then follow the numbered sequence No1 SUPERSOLV, No2 POPOUT, No3 BW STAINAWAY, No4 ENZ OUT.

Rinse each product thoroughly before moving on through the numbered sequence, stop once stain is removed.

## Set up procedure

- 1 Check that the filter is clean.
- 2 Fill the solution tank with fresh water through the open hole.
- 3 Connect the power socket into the power receiver on the back of the machine.
- 4 Plug the power cables into separate mains power sockets.
- 5 Insert the grey prime hose into the quick realise coupling at the front of machine and place the open end into the rectangle hole in the solution tank.
- 6 Holding the grey hose in the rectangle hole turn on both the heater and pump switches.  
Water will come through the prime hose and back into the solution tank allow the water to flow for about 30-40 seconds (This will only work with the pressure turned down to zero)
- 7 Leaving the heater switched on turn the pump off.
- 8 Disconnect the prime hose.
- 9 Connect the 30ft vacuum hose to the hose tail in the recovery tank.
- 10 Connect the solution hose to the quick realise coupling at the front of machine.
- 11 Measure 100ml of CFR De-foam into a jug.
- 12 Switch on vacuum No1.
- 13 Suck the CFR De-foam from the measuring jug into the open end of the vacuum hose.
- 14 Switch off vacuum No1.
- 15 Connect the wand to the open end of the vacuum hose then connect the solution hose to the wand.
- 16 Switch on vacuum No1 wait for it to fully start up then switch on vacuum No2.
- 17 Switch on the pump and turn the pressure control knob clockwise until you have reached the desired working pressure.
- 18 The machine is now ready.
- 19 After about 15 minutes check and **EMPTY** the recovery tank (never allow the water level to go above the bottom of the float ball cage) **Golden rule** if you have taken the time to check the water level empty it!
- 20 When switching the machine off it is important that you turn the pump pressure down by turning the pressure control knob anticlockwise until the pressure is below 100psi.

### Service tips

Periodically check and tighten any nuts, bolts, and screws that may have become loose. Periodically Oil and lubricate any quick release couplings, nipples, and threads. Check and clean filters regularly.



## Additional information supplied by Amtech UK



**WARNING - This additional information DOES NOT represent the manufacturer.**

**CAUTION:** This information has been compiled independently by Amtech UK and is for guidance purposes only.

### GUIDE TO SPOT & STAIN REMOVAL

The following are the procedures for removing Spots & Stains from Carpet & Upholstery.

In general, remove spots as soon as possible following a spill or other causes. When working on a spot or stain, a bone scraper is recommended to remove caked soil or light agitation with a soft brush or towel. Always exercise caution not to fray, scratch or damage fibres with aggressive rubbing or agitation.

Always work from the outside edge to the centre of the spot to avoid spreading the problem.

Remember that scissors are the ultimate stain remover. Burns often can be fixed acceptably by careful scrapping and trimming of burnt fibres.

**NOTE:** In all cases start with **ZIP IT Spot & Stain Remover**.

If ZIP IT is unable to remove the stain follow the procedures below commencing with step A if unsuccessful proceed to B and so on.

Be sure to rinse the treated area thoroughly with CFR hand tool to promote faster drying.



**CAUTION:** Pre-test all chemicals on carpets and upholstery for colourfastness before using them in any cleaning procedure. Apply all spotting agents with a hand held trigger sprayer. Thoroughly wetting is normally required however taking care not to soak the stain deeper into the fabric.

STEPS	PROCEDURE
A	Apply <a href="#">Super Soly</a> , agitate lightly (bone scraper, soft brush, towel) and rinse with CFR hand tool. In case of chewing gum use <a href="#">Rid A Gum</a> .
B	Apply detergent solution, agitate lightly, and rinse with CFR hand tool. If still present apply <a href="#">EnZ-Out</a> and rinse with CFR hand tool.
C	Apply <a href="#">Super Soly</a> , apply detergent, agitate lightly and rinse with CFR hand tool. Apply lacquer thinner and rinse with CFR hand tool. Apply <a href="#">EnZ-Out</a> cleaner if necessary.
D	Apply <a href="#">Pop-Out</a> and rinse with CFR hand tool. Apply <a href="#">BW Stain-A-Way</a> and rinse with CFR hand tool. Repeat if necessary.
E	Apply <a href="#">Pop-Out</a> and rinse with CFR hand tool. Apply ammonia and rinse with CFR hand tool.
F	Apply <a href="#">EnZ-Out</a> and rinse with CFR hand tool. When using this procedure on urine apply CFR <a href="#">Deo-Reo</a> following cleaning.
G	Apply <a href="#">Super Soly</a> , agitate lightly (bone scraper, soft brush, towel) and rinse with CFR hand tool.
H	Apply <a href="#">Super Soly</a> , apply detergent, agitate lightly and rinse with CFR hand tool. Certain ink stains may require using alcohol to remove.

### STAIN REMOVAL CHART FOR FABRICS

Asphalt	A	Linseed Oil	A
Beer	D	Lipstick	A
Berries	D	Machine Oil	A
Blood	B	Make – Up	A
Butter	A	Mascara	A
Candy (Sugar)	D	Mayonnaise	A/B
Carbon	A	Milk	B
Chewing Gum	RID A GUM	Mixed Drinks	B/D
Charcoal	A	Mustard	D
Cheese	B	Nail Polish	G
Chocolate	B	Paint – Latex	A/C
Coffee	D	Paint – Oil Bases	A/C
Cooking Oil	A	Rubber	A/C
Cough Syrup	E	Rust	Envirostar green Neutralizer
Crayon	A	Shoe Polish	A/C
Crème de menthe	D	Shortenings	A
Egg	B	Soft Drinks	D
Excrement	B	Soy Sauce	B/D
Fruit Juice	D	Starch	A/B
Furniture Polish	A	Tar	A/E
Furniture Polish with Stain	A/C	Tea	D
Gravy	A/B	Toner	H
Grease	A	Toothpaste	D
Hair Oil	A	Urine	F
Hair Spray	A/B	Varnish	C
Hand Lotion	A	Vaseline	A
Ice Cream	A/B	Vomit	B
Ink – Ball Point	A/H	Water Stain	BW STAIN AWAY
Ink – Fountain Pen	A/H	Wax – Candle	A/G
Ink – Marker Pen	A/H	Wax – Paste	A/G
Lacquer	C	White Glue (household)	C/G
Lard	A	Wine	D

## Additional information supplied by Amtech UK



**WARNING - This additional information DOES NOT represent the manufacturer.**

**CAUTION:** This information has been compiled independently by Amtech UK and is for guidance purposes only.

### DILUTION CHART

	1L	2L	3L	4L	5L	6L	7L	8L	9L	10L	12L	15L
1.1	1000ml	2000ml	3000ml	4000ml	5000ml	6000ml	7000ml	8000ml	9000ml	10000ml	12000ml	15000ml
1.2	500ml	1000ml	1500ml	2000ml	2500ml	3000ml	3500ml	4000ml	4500ml	5000ml	6000ml	7500ml
1.4	250ml	500ml	750ml	1000ml	1250ml	1500ml	1750ml	2000ml	2250ml	2500ml	3000ml	3750ml
1.5	200ml	400ml	600ml	800ml	1000ml	1200ml	1400ml	1600ml	1800ml	2000ml	2400ml	3000ml
1.6	170ml	340ml	510ml	680ml	850ml	1020ml	1190ml	1360ml	1530ml	1700ml	2040ml	2550ml
1.8	125ml	250ml	375ml	500ml	625ml	750ml	875ml	1000ml	1125ml	1250ml	1500ml	1875ml
1.1o	100ml	200ml	300ml	400ml	500ml	600ml	700ml	800ml	900ml	1000ml	1200ml	1500ml
1.16	62.5ml	125ml	187.5ml	250ml	312.5ml	375ml	437.5ml	500ml	562.5ml	625ml	750ml	937.5ml
1.2o	50ml	100ml	150ml	200ml	250ml	300ml	350ml	400ml	450ml	500ml	600ml	750ml
1.3o	33.4ml	66.8ml	100.2ml	133.6ml	167ml	200.4ml	233.8ml	267.2ml	300.6ml	334ml	400.8ml	501ml
1.4o	25ml	50ml	75ml	100ml	125ml	150ml	175ml	200ml	225ml	250ml	300ml	375ml
1.5o	20ml	40ml	60ml	80ml	100ml	120ml	140ml	160ml	180ml	200ml	240ml	300ml
1.64	15.6ml	31.2ml	46.8ml	62.4ml	78ml	93.6ml	109.2ml	124.8ml	140.4ml	156ml	187.2ml	234ml
1.1oo	10ml	20ml	30ml	40ml	50ml	60ml	70ml	80ml	90ml	100ml	120ml	150ml
1.128	7.8ml	15.6ml	23.4ml	31.2ml	39ml	46.8ml	54.6ml	62.4ml	70.2ml	78ml	93.6ml	117ml
1.175	5.7ml	11.4ml	17.1ml	22.8ml	28.5ml	34.2ml	39.9ml	45.6ml	51.3ml	57ml	68.4ml	85.5ml

**Power-Flite**  
COMMERCIAL FLOOR CARE EQUIPMENT

A Tacony Company  
3101 Wichita Court • Ft. Worth, TX 76140-1710

**AMTECHUK**  
Professional Cleaning Equipment

[www.amtechuk.co.uk](http://www.amtechuk.co.uk)



**WARNING: OPERATOR MUST READ AND UNDERSTAND THIS MANUAL COMPLETELY BEFORE OPERATING THIS EQUIPMENT**