

Lawler Education

Numeracy Counts

Application of Number
Hair and Beauty

Stock Control

FINAL
Caroline Munroe



LAWLER
EDUCATION

Application of Number
Hair and Beauty
Stock Control



The author's rights have been asserted.

© 2018 GLMP Ltd All Rights Reserved.

978-1-84285-450-1

Series Editor: Dr Graham Lawler

Produced and Published by Lawler Education

Lawler Education
Lon Ffawydd/Beech Lane
Abergele
LL22 7DY
www.graham-lawler.com

Lawler Education is a division of GLMP Ltd
and is not affiliated, endorsed or sponsored by any external organisation.

Copyright Notice

The copyright of this book grants the right for one tutor at one provider site to photocopy the activities. A Multi-User Licence must be purchased for each additional tutor using the same resource at the same site. Additional Multi-User licences can be purchased at any time. For providers with multiple sites, each site is treated as an independent site and the above paragraph applies. The ongoing supply of these materials depends on tutors' professional good judgment and compliance with copyright law. This resource is covered by UK and European copyright law, and CLA polices its use.

You acknowledge in the use of this resource that you are applying your own professional judgement in determining the suitability of the goods for any particular purpose. Neither the publisher nor any/all of their agents can be held accountable for outcomes with students as a result of using this resource. Teachers should review the resource in the light of their knowledge of their determination of the needs of their student.

Application of Number
Hair and Beauty

Stock Control

Number/General Thinking Series

Introducing Algebra 1: Number Patterns and Sequences

Introducing Algebra 2: Specialising and Generalising

Introducing Algebra 3: Introducing Equations

Introducing Algebra 4: Equations and Graphs

Number Machines

Number and Place Value

Entry Level: Writing and Forming Numbers

Aber Education Teacher Books

Family Relationships

Bullying and Conflict

Hey Thompson

Self-Esteem and Values

Self-Esteem: a Manual for Mentors

Enhancing Self-Esteem in the Adolescent

Grief, Illness and Other Issues

Survival Teen Island: The Ultimate Survival Guide for Teenagers

Emotional Well Being and Health

Choose Happiness

The Eat Well Stay Slim Budget Cookbook

Write Yourself Well

FINAL

English

Creativity through Language 1: How to Teach Fictional Writing

Creativity through Language 2: How to Teach Informative/Non-Fictional writing

Cloze

Cloze: Cars and Transport

Guided Reading and Writing

More Guided Reading and Writing

Reading for Comprehension 1

Reading for Comprehension 2

Reading for Comprehension 3

Reading for Comprehension 4

Skills for Life

More Skills for Life

Vital Phonics 1

Vital Phonics 2

Vital Phonics 3

Vital Phonics 4



LAWLER
EDUCATION

Writing in Everyday Life Book 1: Making Inferences

Writing in Everyday Life Book 2: Travelling

Writing in Everyday Life Book 3: Asking Questions

Writing in Everyday Life Book 4: Messages

Understanding Maths

Understanding the Numbers: The first steps in Managing Your Money.

Back to the Black: how to get out of debt and stay out of debt.

FINAL

Tutor Notes Session One: Addition	7
S1W1	8
S1b	9
S1W2	10
Tutor Notes Session Two: Rounding	11
S2W1	12
S2W1b	13
S2W2	14
Tutor Notes Session Three: Time	15
S3W1	16
S3W1b	17
S3W2	18
Tutor Notes Session Four: Percentages	19
S4W1	20
S4W1b	21
S4W2	22
Tutor Notes Session Five : Reading Graphs	23
S5W1	24
S5W1b	25
S5W2	26
Tutor Notes Session Six: The mean, median and mode	27
S6W1	28
S6W1b	29
S6W2	30
Tutor Notes Session Seven: Area	31
S7W1	32
S7W1b	33
S7W2	34
Tutor Notes Session Eight: Volume	35
S8W1	36
S8W2	37
Interactive White Board Activities	38
Answers	39
Appendix A	40

Starter

The students will probably be unaware of the need for stock control. We suggest that you stress that the role of a business person is to manage stock carefully and to make profits for their business. Students may be aware of the old refrain 'stock is as good as money'. This is rubbish. Stock ties up money; it means there is less liquidity within the business. We suggest you explain liquidity as having
mc ving flexibility within the business.
If t ess. The students need to under-
sta 3) cash. If you have £5000 worth of

Thi
thc

Mc
Us
mc
As
Ho
Yoi



in electronic device. In the scenario

d for stock control as a means of
int are fake.

addition, viz:

Be aware that some level 1/2 assessors do insist on seeing the carried ten written on the calculation. We know of one student who, when asked to add 39 and 5, wrote 44 and was failed because he did not 'show' the carried 10.

Work through the worksheets S1W1/S1W1b (1b is differentiated) with students

Plenary

Ask students to complete S1W2



I need to know how many nail varnish bottles there are in stock, so I asked my apprentice Smita to work it out. She made this table.

Colour	Tally	Total



LAWLER
EDUCATION

1. Complete
2. Which col
3. Which col
4. What doe

5. What is t

Starter

Discuss why it is essential to be able to estimate accurately and use the powerpoint slide show for help.

It is worth discussing the spread between the least possible and the highest possible answer when rounded to the nearest 10, since both would round to the same value.

Main Activity

Use the estimating program. Students are reminded that we are using an open source program. It is advisable to see the program in action before using it.

Plenary

Ask the students to demonstrate the ability to round to the nearest 10, 100, 1000, and so on. In question 2, the number of curlers is 450, since 450 is closer to 500 than 400. This may need to be discussed.

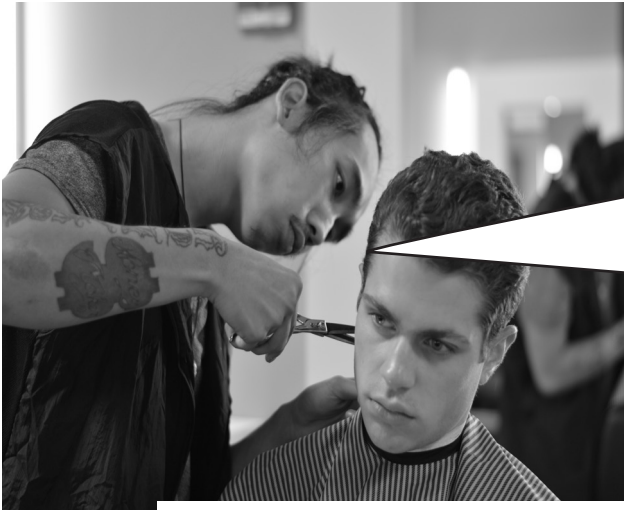


Many salons offer nail beauty treatments. The cost varies but we charge £45 for the initial treatment and £25 for the backfill. This is great extra business for us, if we see 50 customers a month, for an initial treatment that is £2250 extra taking it affects th



LAWLER
EDUCATION

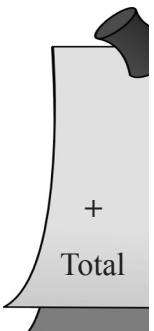
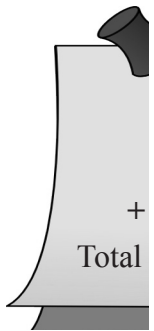
Rounded So to the neae				
20				
10				
40				
60				
30				
70				
10				
50				
80				
90				



Just in Time means parts arrive just when they are needed. This takes planning. Fran needed a new solution for a nail backfill job on Friday, it takes three days to arrive, including the day of order.

1 When

2 Add

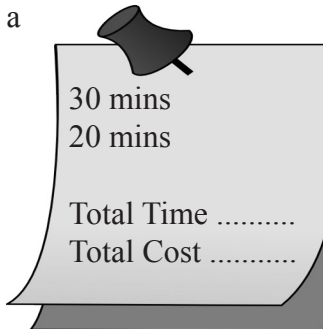




Salons charge for their time. Every minute we are working on creating a new look for you costs you money. Here you need to work out the costs for these jobs sheets. Add up the time and then multiply the total by the rate per hour, in our case £50/hr or part of an hour.

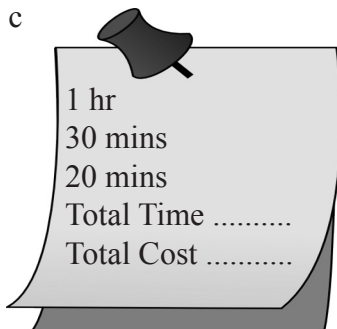
In truth, salons charge per job but they need to ensure they are covering their

a



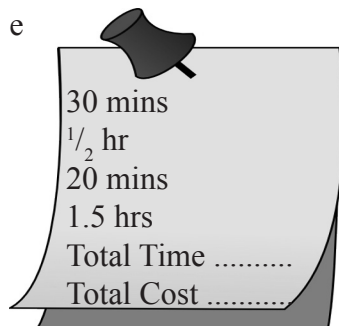
30 mins
20 mins
Total Time
Total Cost

c

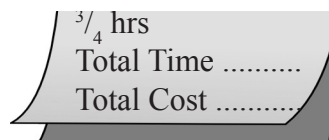


1 hr
30 mins
20 mins
Total Time
Total Cost

e



30 mins
 $\frac{1}{2}$ hr
20 mins
1.5 hrs
Total Time
Total Cost

$\frac{3}{4}$ hrs
Total Time
Total Cost

Percentages

Starter

Make sure students understand that a percentage is a fraction over 100. It is important that they can calculate a percentage question in one step. So they should know that $30\% = \frac{30}{100} = 0.3$ and so to work out 30% of 200 t

Use the powerpoint slides to help the students.

Main Activity

The questions here are on the worksheets for this session.

Plenary

Discuss using a scientific calculator. They are aware that the order of operations is vitally important. Division and multiplication come before addition and subtraction.



Working Out Percentages

Work out the following Percentages

1 30% of 100 hairdryers.

2 25% of 80 hairspray cans.

3 40% of 120 bottles of nail varnish.

4 30% of

5 20% of



6 Work

7 Work

8 What

9 What

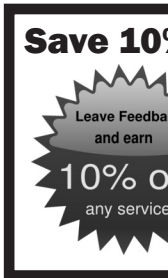
10 What





When we do a beauty treatment for a client,
We have to add VAT here in the U.K.
That is 20% added to the bill.

We currently
for new bea
knock off 10



Now as a trainee in t

Take a £45 nail back

happens ? Try it the other way, what happens ? Does this always happen ?
Try it with other numbers, say £25 does the same thing happen ?

Write a report on your findings.

Reading Graphs

Starter

Many businesses, including businesses in the beauty industry, graph their revenue streams.

Students need to be aware that this is a mechanism to see patterns and determine tolerances. If sales vary widely, something is wrong. Make sure they understand that at certain times of the year sales are expected to go up, eg at Christmas bookings for hair appointments usually increase. They need to be clear that graphing sales feeds points.

Read through the worksheets with the students and ensure they understand that on page 24 represents perm sales the increased Easter and Christmas differentiated worksheet to make it

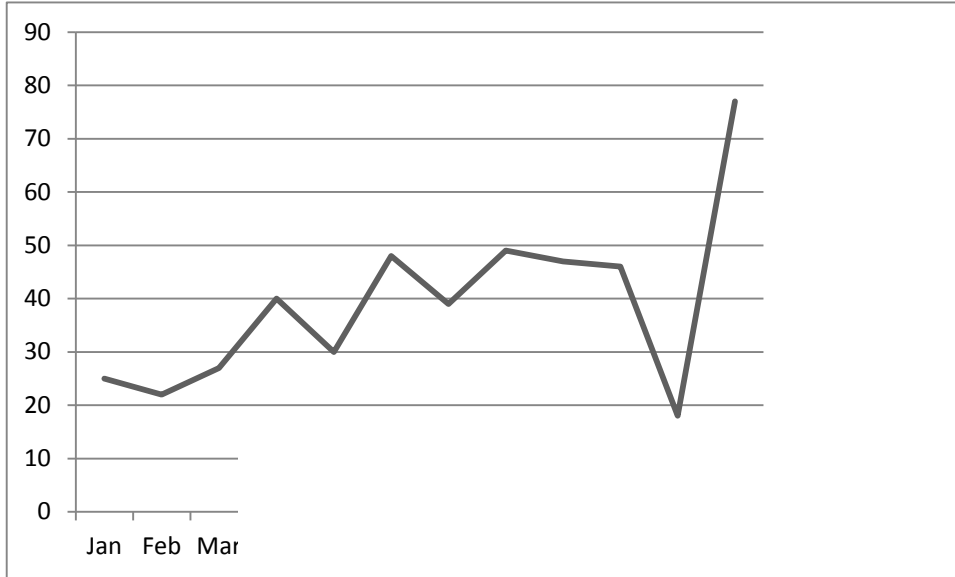


be aware that the offer has to
ours, we have no business.

LAWLER

EDUCATION

Reading Graphs



This graph shows sales the graph, what does it Discuss your ideas with what you know that ha industry.

In this space write dow that service may be. Give reasons for your a from what you infer on graph.



The mean, median and mode

Starter

The purpose of this session is to establish an understanding of the mean. In the powerpoint for this session we have referred to the median and mode but the main emphasis is on the mean. Show the powerpoint to students and discuss the slides. In particular discuss the mean calculation to $23 \frac{1}{3}$ minutes. Make sure students understand that this answer gives us an understanding of the average time spent on the jobs.

Main Activity

Ask the students
sional judgement
mode. You may

es-

:

€

On S6 W1 you w
is the Euro symb
awareness of the

is

an

Plenary

Discuss the mea
day. Many of the

:

