

# X-SPECTION

## 6000 X-RAY INSPECTION SYSTEM

SCIENSCOPE  
INTERNATIONAL



## X-Spection 6000 X-Ray Inspection System

The X-SPECTION 6000 is our most Technologically Advanced X-Ray Inspection System. As with all X-SCOPE platforms, it includes every advanced s/w tool required for a wide variety of applications. With more tilt and a rotating work table, the X-SPECTION 6000 is the ultimate in flexibility.

### Applications

- |   |   |
|---|---|
| <input checked="" type="checkbox"/> Multilayer PCBs                   | <input checked="" type="checkbox"/> Molded plastic        |
| <input checked="" type="checkbox"/> BGA, QFN, wire bond, etc.         | <input checked="" type="checkbox"/> Automotive assemblies |
| <input checked="" type="checkbox"/> Semiconductor                     | <input checked="" type="checkbox"/> Medical devices       |
| <input checked="" type="checkbox"/> Over molded electrical connectors | <input checked="" type="checkbox"/> Pharmaceuticals       |
| <input checked="" type="checkbox"/> Encapsulated components           | <input checked="" type="checkbox"/> Ceramics              |
| <input checked="" type="checkbox"/> Aluminum die casting              | <input checked="" type="checkbox"/> Agriculture           |



← **SCAN THIS CODE  
WITH YOUR SMART PHONE**



### System Details



### FEATURING

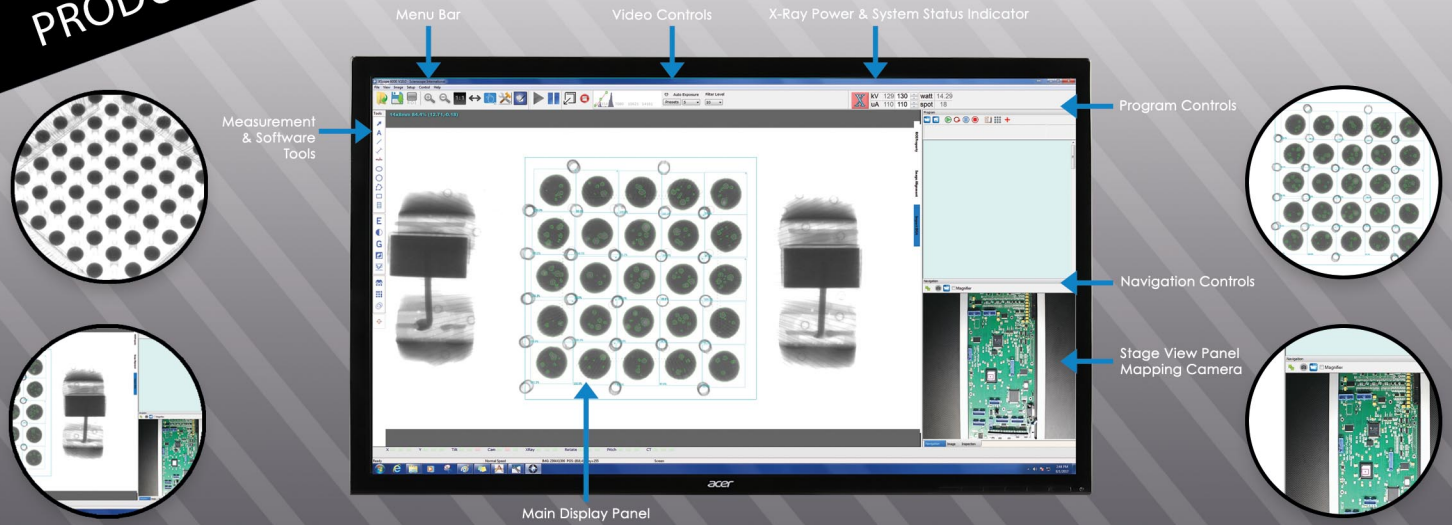
- Fully integrated, 130kV high power micro-focus closed x-ray tube
- Spot size down to 5 $\mu$
- 5" x 5" or 4" x 3" high resolution and ultra resolution CMOS digital flat panel image detector
- 55° camera tilt for oblique angle viewing
- 22" x 18" Inspection stage with 350° rotation
- Color mapping camera with zoom window provides easy location and identification of faults
- Z axis movement of the x-ray tube and detector
- Computer controlled kV and mA settings
- Computer controlled variable speed X-Y stage (and rotate)
- Simple point and click, intuitive GUI provides access to create advanced inspection routines

All software tools standard including (but not limited to)

- BGA Void detection and automatic calculations
- Easy macro recording for intuitive step and repeat programming
- Various measuring tools for radius, area, perimeter, etc.
- Industrial PC with Windows 7 PRO, 24" LCD flat panel display

PRODUCT SPECIFICATIONS

TOP OF THE LINE SYSTEM WITH  
TOP OF THE LINE PERFORMANCE!



MACHINE SPECIFICATIONS

X-Ray Tube

- ✓ X-Ray Source: Micro-focus, integrated (closed)
- ✓ Operating voltage: 130kV
- ✓ Current: 0.32mA
- ✓ Minimum Focal Spot Size: 5 Micron
- ✓ Magnification up to: 800x

Work Area

- ✓ Sample Table Size: 560mm x 457mm / 22" x 18"
- ✓ Inspection Area: 360mm x 290mm / 14.2" x 11.6"
- ✓ Oblique Angle View: ±55°



THIS SYSTEM INCLUDES A 1 YEAR WARRANTY ON PARTS AND LABOR

Digital Flat Panel Detector

- ✓ Grayscale: 14 bit (16,384 shades of grayscale)
- ✓ Speed: 10FPS (4x3 detector) OR 30FPS (5x5 detector)
- ✓ Resolution: 49.5µm (4x3 detector) or 99µm (5x5 detector)
- ✓ Detector Size: 4" x 3" ultra-high resolution or 5" x 5" high resolution

General Machine Specs

- ✓ Dimensions: 59" x 62.9" x 62.9" (78.6" including light tower)  
1500mm x 1600mm x 1600mm (2000mm including light tower)
- ✓ Weight: 1600kg /3527 lbs. (steel lead welded construction)
- ✓ Power: 110-230 VAC 50/60 Hz (universal)
- ✓ Industrial PC: Microsoft Windows 7 PRO (64-bit)

Compliance

THE SCIENSCOPE X-SCOPE X-RAY INSPECTION SYSTEMS MEET THE FDA-CDRH REGULATION CFR 21.1020.40 SUBCHAPTER J FOR CABINET X-RAY SYSTEMS. THE FDA-CDRH STANDARD FOR CABINET X-RAY SYSTEMS STATES THAT RADIATION EMISSIONS WILL NOT EXCEED 50 MICRO R/HR 5 CM FROM ANY EXTERNAL SURFACE. THE X-SCOPE X-RAY INSPECTION SYSTEMS TYPICALLY HAVE A RADIATION EMISSION READING OF LESS THAN 20 MICRO R/HR 5 CM FROM ANY EXTERNAL SURFACE. ALL SCIENSCOPE X-SCOPE X-RAY SYSTEMS HAVE A CE APPROVAL. SCIENSCOPE X-SCOPE X-RAY SYSTEMS ARE CLASSIFIED AS "CABINET X-RAY SYSTEMS" AND REQUIRE NO EXTERNAL RADIATION SHIELDING. WELDED STEEL / LEAD-STEEL CONSTRUCTION, NO VISIBLE SHIELDING.

FDA ACCESSION NUMBER: 0710198

CE REFERENCE NUMBER: CN.CE.0402-05.09

