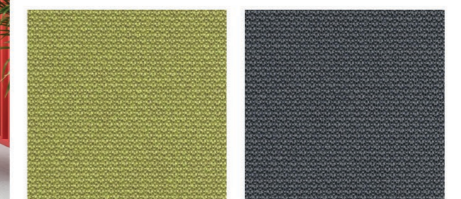


By removing the storage beneath the stairs we could open up this space for some seating, as a universal waiting area for all of the offices.

The sofa and seat below could be made in the green or grey fabric to match the colour scheme.



I would suggest pairing a deep purple colour with a natural olive/sage colour, to create a soft colour scheme which is current and professional. This is reflective of the area in which the offices are situated, which is constantly being regenerated. It also works well with the floral graphics of the bar next door, which are visible to one side of the stairs.



In order to refresh the stairs and landing, we need to replace the flooring as a top priority. The current tiles are outdated and most companies would prefer to have a more welcoming ambience in the entrance area nowadays. A durable carpet such as those featured could be continued throughout the stairs and landing. It's important that we choose a style without any lineage or patterns, as the space is not perfectly square. Also, by choosing a flecked carpet it could minimise the appearance of any dirt, reducing maintenance.

A medium grey would be a neutral base for the majority of the flooring, which could be highlighted with other colours in specific areas, such as next to the lift.

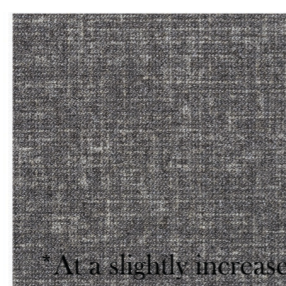
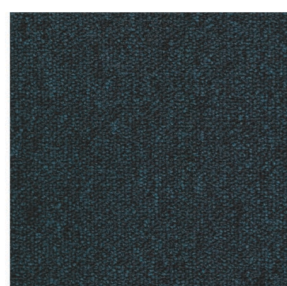
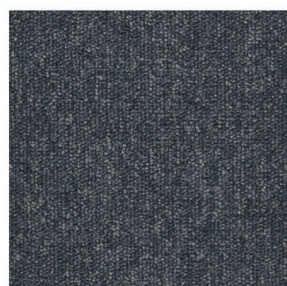


Rather than keep the door mats in the entrance, we can introduce some very durable carpet to complement the other carpet choice.



I think these small coffee tables would work well with the sofa. A light wood finish would tie in with the colour scheme.

Alternative Carpet Choices



*At a slightly increased cost

These ambient lights could replace the dated lamps over the stairs. They have a curved finish which would tie in with the softer look. The cube lights could be used as a feature either side of the entrance plaque and for each business sign.



SPECTRUM INTERIORS