

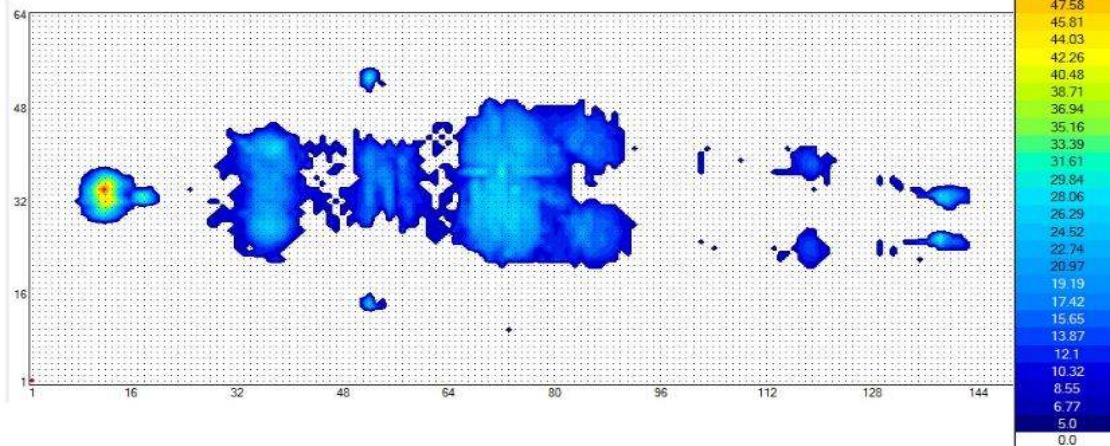
UTS Pressure Mapping:

Test object: Female, 50Kg, Mode 1 (20mmHg)

1. **Active (Alternate, With Pad)**

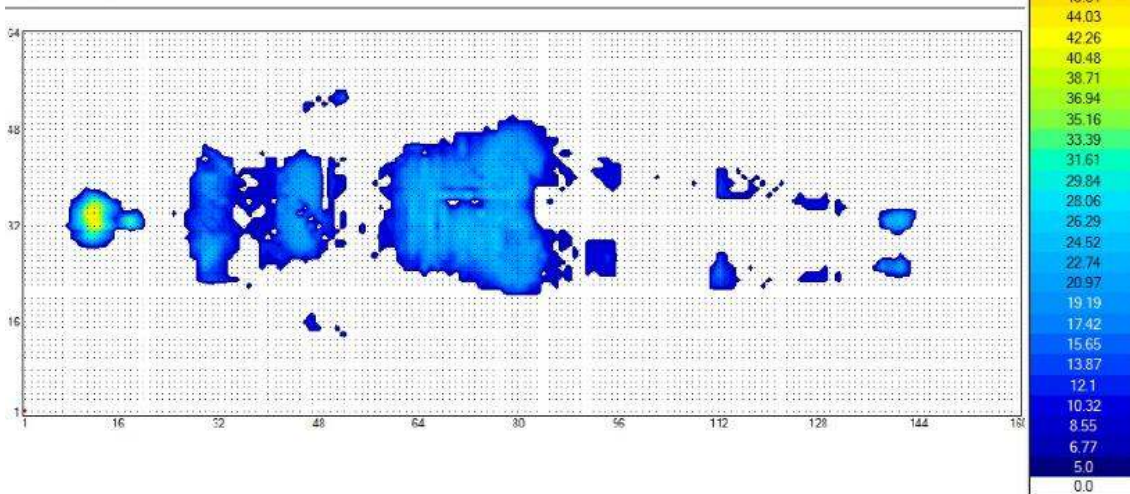
With Pad, Female, 50Kg, ALT Mode P1 (20mmHg)

Cell A Pressure Mapping



With Pad, Female, 50Kg, ALT Mode P1 (20mmHg)

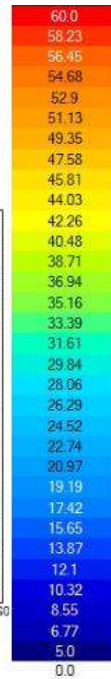
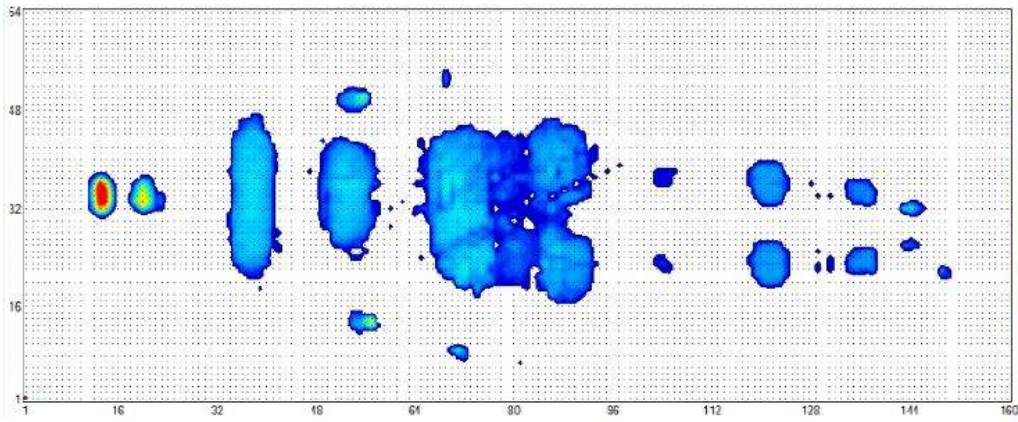
Cell B Pressure Mapping



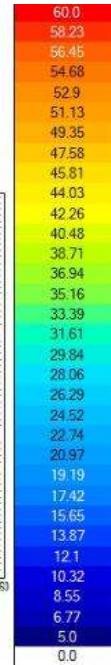
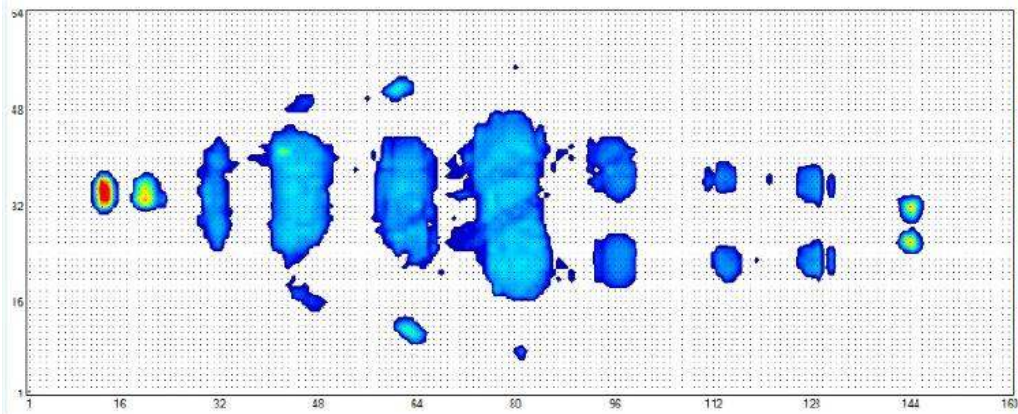
With Pad, Female, 50Kg, ALT Mode P1 (20mmHg)					
Cell A			Cell B		
Interface Pressure (mmHg)	Qty	%	Interface Pressure (mmHg)	Qty	%
> 30	24	2%	> 30	19	1%
≤ 30	56	4%	≤ 30	19	1%
≤ 25	182	13%	≤ 25	272	21%
≤ 20	303	22%	≤ 20	309	24%
≤ 15	583	43%	≤ 15	466	36%
≤ 10	204	15%	≤ 10	219	17%
≤ 5			≤ 5		

2. **Active (Alternate, Without Pad)**

No Pad, Female, 50Kg, ALT Mode P1 (20mmHg)
 Cell A Pressure Mapping

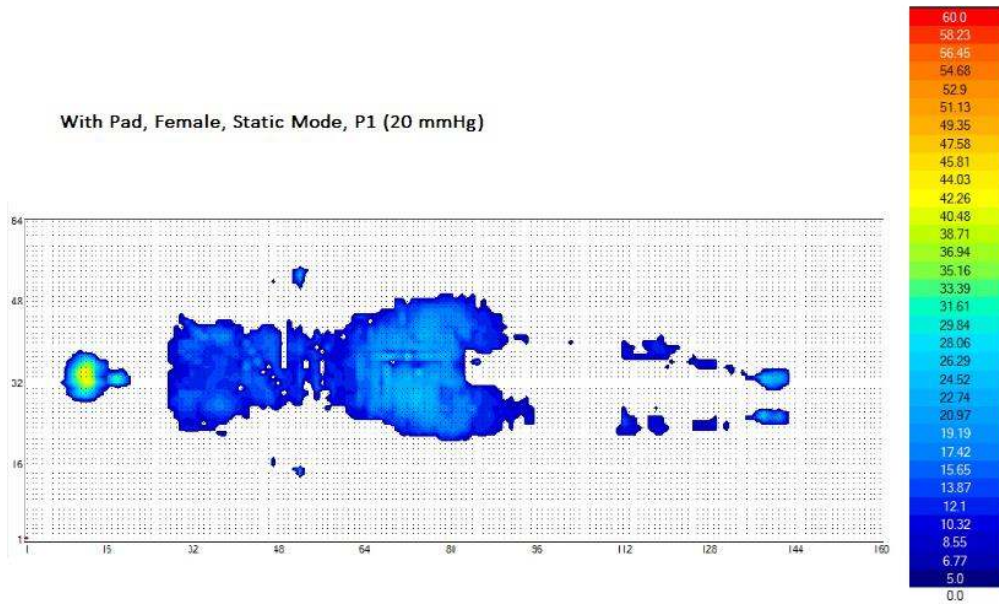


No Pad, Female, 50Kg, ALT Mode P1 (20mmHg)
 Cell B Pressure Mapping



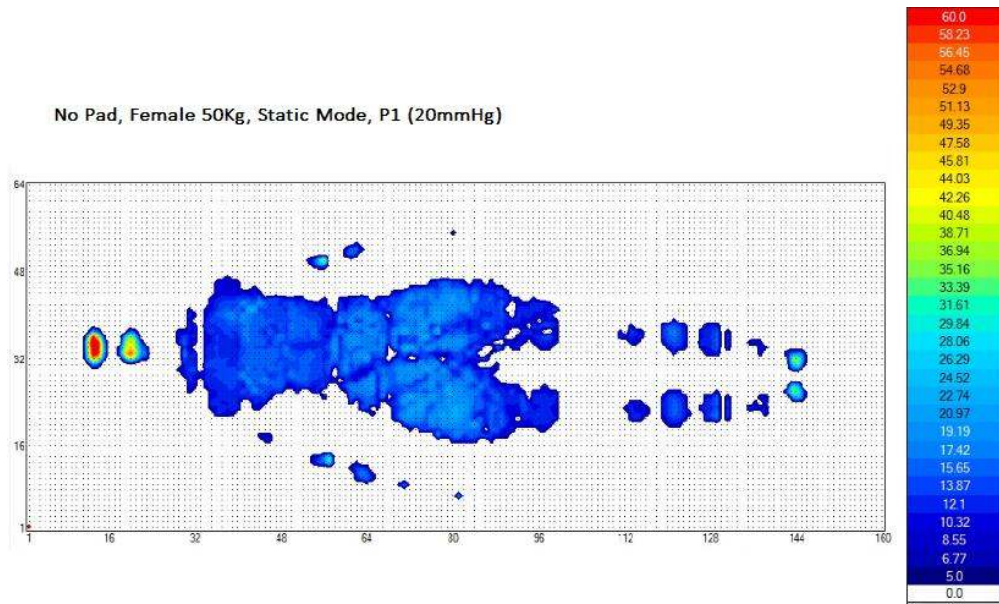
Cell A		Cell B	
Interface Pressure	%	Interface Pressure	%
> 30	2%	> 30	3%
≤ 30	13%	≤ 30	11%
≤ 25	23%	≤ 25	24%
≤ 20	25%	≤ 20	27%
≤ 15	31%	≤ 15	27%
≤ 10	7%	≤ 10	9%
≤ 5		≤ 5	

3. Active (Static, With Pad)



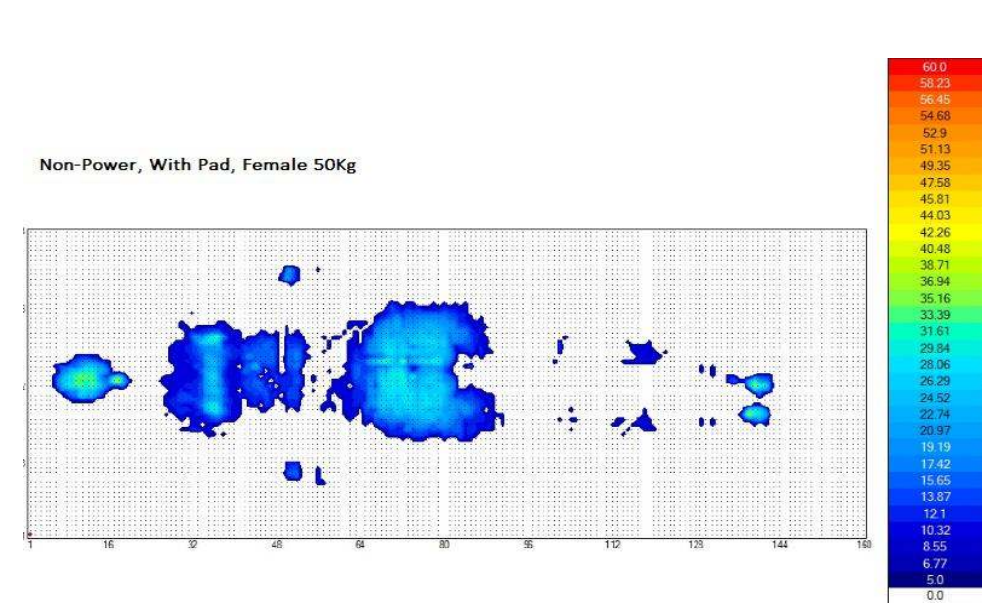
With Pad, Female, 50Kg, Static Mode P1 (20mmHg)		
Static		
Interface Pressure	%	
> 30	1%	
≤ 30	1%	
≤ 25	9%	
≤ 20	25%	
≤ 15	54%	
≤ 10	10%	

4. Active (Static, Without Pad)



No Pad, Female, 50Kg, Static Mode P1 (20mmHg)		
Static		
Interface Pressure	%	
> 30	2%	
≤ 30	0%	
≤ 25	4%	
≤ 20	33%	
≤ 15	55%	
≤ 10	5%	

5. Reactive (Non-power, With Pad)



Non-Power, with Pad, Female, 50Kg		
Static		
Interface Pressure	%	
> 30	2%	
≤ 30	10%	
≤ 25	15%	
≤ 20	18%	
≤ 15	45%	
≤ 10	11%	