

Lancashire
Adult Learning

Adult Course Guide

Spring 2020



Welcome to the Lancashire Adult Learning Spring Course Guide.

What we do...

Lancashire Adult Learning is the second largest adult community learning provider in the country and provides exceptional learning opportunities across Lancashire. In total, Lancashire Adult Learning delivers in more than 300 venues across Lancashire, working with over 200 partners to reach over 14,000 learners.

We offer a wide range of programmes to help you get back into work, courses for leisure, Maths and English and programmes to improve your digital skills.

In East Lancashire we also offer Professional Skills and Higher Level qualifications for adults that are looking to get back into work, change their career or simply upskill within their current job role. To find out more about our Professional Skills and Higher Level qualifications, pick up a **Professional Skills Guide** or **Undergraduate Prospectus**.

Learn something new this Spring!












What's on offer this Spring...

For this Spring, why not have a go at something new with one of our free introductory sessions? Try out a new language, learn the art of creative writing, discover your cooking skills or immerse yourself in a number of ways to improve your health and wellbeing.

There is also the chance to progress your career with a local and affordable university level qualification, and we have a variety of free, high-quality Functional Skills and GCSE courses in Maths, English, ESOL and ICT taking place across the county too. You could also get back into work with one of our **FREE Work Clubs**.

It's never too late to learn with Lancashire Adult Learning. So, why not learn something new today?

Our Courses

-  Arts, Media and Publishing
-  Computing, IT and Business
-  Employability and Work Clubs
-  English, Maths, ICT and ESOL
-  Family Learning
-  Health and Wellbeing
-  Humanities
-  Languages
-  Stronger Communities

Contents

Central and West Lancashire	
Arts and Media	4
Health and Wellbeing	5
Languages	6
East Lancashire and the Ribble Valley	
Humanities	8
Digital	9
Arts and Media	9
Health and Wellbeing	10
Construction and Motor Vehicle Facilities and Cleaning Services	11
Languages	12
Hairdressing and Beauty	13
Health Awareness, Childcare and Education	14
First Steps to Higher Education	16
Horticulture	16
Sport	16
University Centre	18
Apprenticeships	19
Professional Skills	20
Lancaster, Morecambe and the Fylde Coast	
Humanities	22
Arts and Media	23
Health and Wellbeing	24
Languages	25
Work Clubs and Employability	26
Family Learning	28
Learning in Libraries	29
English and Maths	30
ESOL	31
ICT	32
Get Online	33
Additional Learning Support	34
Information, Advice and Guidance	34
How to Enrol	35

Central and West Lancashire



Location Key

ASC | Ascension Community Centre
450 Watling Street Road,
Preston, PR2 6UA

ASH | Ashton Methodist Church
Wellington Rd, Ashton-on-Ribble,
Preston, PR2 1BU

BAM | Bamber Bridge Methodist Church
Station Road, Bamber Bridge, PR5 6ED

CHO | Chorley Library
Union Street, Chorley, PR7 1EB

EUX | Euxton Parish Community Centre
School Lane, Chorley, PR7 6JL

JEF | Jeff's Orange Rooms
22 Saint Thomas' Road, Chorley PR7 1HR

LAN | Lancaster Way Community Centre
Buckshaw Village, Chorley, PR7 7LJ

MAR | St Mary's Church Hall (Priory)
Broadfield Drive, Leyland, PR25 1PD

MIC | St Michael's CE High School
Astley Road, Chorley, PR7 1RS

ORM | Ormskirk Civic Hall
Southport Road, Ormskirk, L39 1LN

PEC | St Peter's Church
Harpers Lane, Chorley, PR6 0HT

PET | St Peter's Meeting Room
Harpers Lane, Chorley, PR6 0HT

PPC | St Peter's Parish Club
Eaves Lane, Chorley, PR6 0DX

PLA | The Place
73 Royal Avenue, Leyland, PR25 1BX

**PUL | PULSE (People's Umbrella
for Learning)**
Concourse Shopping Centre,
Skelmersdale, WN8 6LN

SKE | Skelmersdale Library
Southway, Skelmersdale, WN8 6NL

SPA | SPACE Centre
Pedders Lane, Ashton on Ribble,
Preston, PR2 2TH

Health and Wellbeing

Whether you are looking to enjoy a bit of 'me time' with one of our mindfulness classes, or would like to raise your food safety awareness, we have a range of Health and Wellbeing courses to suit you and your interests.

COURSE	CODE	VENUE	TIMES	DATE	DAY	WEEKS	COST
5 Ways to Improve Your Mental Wellbeing	BHBN1000D	LAN	1pm - 3pm	7th February	FRI	1	FREE
Basic Awareness of Food Safety	BHBN1009B	PPC	1pm - 3pm	11th February	TUE	1	FREE
Basic Awareness of Food Safety	BHBN1009	ASH	9:30am - 11:30am	3rd March	TUE	1	FREE
Be Food Smart	BHBN1008	ASC	1pm - 3pm	14th January	TUE	1	FREE
Cancer Screening Champions	BHBN1029A	PPC	9:30am - 12pm	4th February	TUE	1	FREE
Cancer Screening Champions	BHBN1029B	BAM	1pm - 3pm	4th February	TUE	1	FREE
Cancer Screening Champions	BHBN1029	PUL	2pm - 4pm	4th February	TUE	1	FREE
Kindfulness: Unlock Happiness with Kindness	BHBN1030	MAR	9:30am - 11:30am	2nd April	THU	1	FREE
Lancashire Lifesavers	BHBN1004U	PET	9:30am - 11am	4th February	TUE	1	FREE
Lancashire Lifesavers	BHBN1004L	ASH	9:30am - 11am	13th February	THU	1	FREE
Lancashire Lifesavers	BHBN1004S	ORM	9:30am - 11am	2nd March	MON	1	FREE
Lancashire Lifesavers	BHBN1004Q	BAM	6pm - 7:30pm	28th April	TUE	1	FREE
Mindfulness Techniques for Everyday Living	BHBN1005G	SKE	1pm - 3pm	20th April	MON	1	FREE
Mindfulness Techniques for Everyday Living	BHBN1005H	SPA	9:30am - 11:30am	21st April	TUE	1	FREE



FREE
Functional Skills
Maths, English, ICT
and ESOL courses
are also available
across Central and
West Lancashire

See page 30
for more details

Arts and Media

Our Arts and Media courses are an ideal way to learn a new skill or find your passion for a new hobby. From Sewing and Dressmaking to Drawing and Painting, we can help you enhance your creative flair. There's something for everyone to enjoy!

COURSE	CODE	VENUE	TIMES	DATE	DAY	WEEKS	COST
Botanical Drawing for Beginners	BATN1048	SPA	1pm - 3pm	15th January	WED	10	£120 ▲
Children's Book Illustration for Beginners	BATN1047	SPA	10am - 12pm	15th January	WED	11	£132 ▲
Drawing and Painting Using Mixed Media	BATN1007A	SPA	10am - 12pm	17th January	FRI	10	£120 ▲
Introduction to Sewing and Dressmaking	BATN1038	JEF	9:30am - 12pm	9th January	THU	1	FREE
Sewing and Dressmaking Beginners	BATN1026B	JEF	9:30am - 12pm	16th January	TUE	11	£132 ▲

▲ Fee reduction may apply | ● Material fees may apply

▲ Fee reduction may apply | ● Material fees may apply



Languages

Our language classes are a great way to develop valuable skills. Whether you want to pick up a few phrases for your next holiday or are looking to become a fluent linguist, we can help you enhance your language skills.

1 | Beginners

Suitable for complete beginners who have never previously studied the language

2 | Improvers

Suitable for those who have some previous knowledge of the language and want to improve on existing language skills

3 | Pre-Intermediate

Suitable for those who have completed the Improvers course or who have previously studied the language for 1-2 years

4 | Intermediate

Suitable for those who have completed the Pre-Intermediate course or who have previously studied the language for approximately 3 years

5 | Post-Intermediate

Suitable for those who have completed the Intermediate course or who have previously studied the language for approximately 4 years

6 | Advanced/ Conversational

Suitable for those who have completed the Post-Intermediate course or who have previously studied the language for approximately 5 years

Italian

COURSE	CODE	VENUE	TIMES	DATE	DAY	WEEKS	COST
Italian Beginners Term 2	BLGN1022D	MIC	6pm - 8pm	13th January	MON	10	£120 ▲
Italian Improvers Term 2	BLGN1020A	PET	1pm - 3pm	14th January	TUE	11	£132 ▲
Italian Pre-Intermediate Term 2	BLGN1023B	SPA	1pm - 3pm	16th January	THU	11	£132 ▲
Italian Post-Intermediate Term 2	BLGN1025A	MIC	6pm - 8pm	14th January	TUE	11	£132 ▲
A Taste of Italian Language, Food and Lifestyle	BLGN1040	JEF	1.30pm - 3:30pm	6th January	MON	1	FREE
Italian Cooking & Culture	BLGN1041	JEF	10am - 12pm	13th January	MON	10	£120 ▲

French

COURSE	CODE	VENUE	TIMES	DATE	DAY	WEEKS	COST
French Beginners	BLGN1004C	MIC	6pm - 8pm	15th January	WED	11	£132 ▲
French Beginners Term 2	BLGN1002G	JEF	1pm - 3pm	17th January	FRI	10	£120 ▲
French Improvers Term 2	BLGN1001A	JEF	10am - 12pm	17th January	FRI	10	£120 ▲
French Intermediate Term 2	BLGN1005C	MIC	6pm - 8pm	14th January	TUE	11	£132 ▲
A Taste of French Language, Food and Lifestyle	BLGN1037	EUX	10am - 12pm	8th January	WED	1	FREE

German

COURSE	CODE	VENUE	TIMES	DATE	DAY	WEEKS	COST
German Improvers Term 2	BLGN1014C	JEF	1pm - 3pm	14th January	TUE	11	£132 ▲
German Pre-Intermediate Term 2	BLGN1011B	JEF	10am - 12pm	14th January	TUE	11	£132 ▲
German Post-Intermediate Term 2	BLGN1016A	SPA	6:30pm - 8:30pm	16th January	THU	11	£132 ▲

Spanish

COURSE	CODE	VENUE	TIMES	DATE	DAY	WEEKS	COST
Spanish Beginners Term 2	BLGN1028K	MIC	6pm - 8pm	13th January	MON	10	£120 ▲
Spanish Beginners Term 2	BLGN1028G	EUX	10am - 12pm	17th January	FRI	10	£120 ▲
Spanish Improvers Term 2	BLGN1032G	MIC	6pm - 8pm	13th January	MON	10	£120 ▲
Spanish Improvers Term 2	BLGN1032E	EUX	1pm - 3pm	14th January	TUE	11	£132 ▲
Spanish Intermediate Term 2	BLGN1030A	EUX	10am - 12pm	14th January	TUE	11	£132 ▲
Spanish Post-Intermediate Term 2	BLGN1033C	EUX	10am - 12pm	15th January	WED	11	£132 ▲
A Taste of Spanish Language, Food and Lifestyle	BLGN1043	EUX	1:30pm - 3:30pm	7th January	TUE	1	FREE

British Sign Language

COURSE	CODE	VENUE	TIMES	DATE	DAY	WEEKS	COST
Introduction to British Sign Language	BLGN1000C	JEF	9:30am - 12:30pm	6th February	THU	1	FREE
Introduction to British Sign Language	BLGN1000F	JEF	9:30am - 12:30pm	13th February	THU	1	FREE
British Sign Language for Beginners	BLGN1044	JEF	9:30am - 12:30pm	27th February	THU	5	£75 ▲



▲ Fee reduction may apply | ● Material fees may apply

▲ Fee reduction may apply | ● Material fees may apply

East Lancashire and the Ribble Valley



East Lancashire is home to our main campus for Lancashire Adult Learning, Northlight in Brierfield, as well as our two group college campuses Nelson and Colne College and Accrington and Rossendale College. As such, we are able to offer a broader range of courses for this region. The offer includes community learning and leisure courses, as well as professional and higher level part-time qualifications for adults looking to upskill. Take a look at our range of courses available for this Spring...

Location Key

ACE | The ACE Centre
Cross Street, Nelson, BB9 7NN

ARC | Accrington and Rossendale College
Sandy Lane, Accrington, BB5 2AR

BFC | Burnley FC in the Community
Turf Moor, Harry Potts Way, BB10 4BX

BUR | Burnley Campus Library
Barden Lane, Burnley, BB10 1JD

CLI | Cliviger Village Hall
380 Burnley Road, Burnley, BB10 4SU

COA | Coal Clough Community Centre
2 Pasturegate Avenue, Burnley, BB11 4DD

CRA | Crawshawbooth Village Centre and Library
Adelaide Street, Rossendale, BB4 8PW

HAS | Haslingden Community Link
Bury Road, Rossendale, BB4 5PG

LIN | Linkbridge Community Centre
1 Swinless Street, Burnley, BB10 3NB

NCC | Nelson and Colne College
Scotland Road, Nelson, BB9 7YT

NOR | Lancashire Adult Learning
Northlight, Brierfield Mill, Glen Way, Brierfield, BB9 5NH

PAD | Padiham Town Hall
Burnley Road, Padiham, BB12 8BS

VAL | Valley Street Community Centre
Valley Street, Burnley, BB11 5LZ

VET | Veterans in Communities
12 Bury Road, Haslingden, Rossendale, BB4 5PL

WAT | The Waterside Centre
St James Court West, Accrington, BB5 1NA

WHA | Whalley Old Grammar School
Station Road, Whalley, BB7 9RH

WHI | Whitewell Bottom Community Centre
Burnley Road East, Rossendale, BB4 9LB

WOO | Woodnook Community Centre
Royds Street, Accrington, BB5 2HU

Humanities

Join one of our Humanities courses to spark your love for learning and introduce you to new theories and ideas about the world around you.

COURSE	CODE	VENUE	TIMES	DATE	DAY	WEEKS	COST
Creative Writing Beginners	BHNN1000C	NCC	6pm - 8pm	15th January	WED	11	£132 ▲
Introduction to Lancashire's Social History	BHNN1005	ACE	10am - 12pm	15th January	WED	1	FREE
Lancashire: A Social History Through the Decades	BHNN1009	ACE	10am - 12pm	22nd January	WED	10	£120 ▲
Shakespeare's Writings for Beginners	BHNN1005A	NOR	10am - 12pm	9th January	THU	1	FREE
Write A Poem in a Morning	BHNN1008	ACE	10am - 12pm	8th January	WED	1	FREE

▲ Fee reduction may apply | ● Material fees may apply

Digital

Learn the basics of building a website with our 'Get Started' courses.

COURSE	CODE	VENUE	TIMES	DATE	DAY	WEEKS	COST
Get Started with Web Design	BICN1000C	NCC	6pm - 8:30pm	12th February	WED	1	FREE
Get Started with Web Design	BICN1000B	ARC	6pm - 8:30pm	1st April	WED	1	FREE

Arts and Media

Our range of Arts and Media courses are an ideal way to learn a new skill or hobby. From Art History to Drawing and Painting to Bookbinding and Book Arts, we can help you enhance your creative flair. There's something for everyone to enjoy!

COURSE	CODE	VENUE	TIMES	DATE	DAY	WEEKS	COST
Abstract Painting Improvers	BATN1000A	NOR	1pm - 3pm	16th January	THU	11	£132 ▲
Introduction to Art History	BATN1039	NOR	10am - 12pm	8th January	WED	1	FREE
Art History for Beginners	BATN1041	NOR	10am - 12pm	15th January	WED	5	£60 ▲
Introduction to Bookbinding and Book Arts	BATN1012B	PAD	10am - 12pm	9th January	THU	1	FREE ▲
Bookbinding and Book Arts for Beginners	BATN1046	PAD	10am - 12pm	16th January	THU	11	£132 ▲
Digital Photography Beginners	BATN1003A	NCC	6pm - 9pm	14th January	TUE	5	£90 ▲
Digital Photography Intermediate	BATN1004A	NCC	6pm - 9pm	3rd March	TUE	5	£90 ▲
Drawing and Painting Beginners	BATN1005E	ACE	1pm - 3pm	17th January	FRI	10	£120 ▲
Drawing and Painting Beginners	BATN1005F	PAD	1pm - 3pm	16th January	THU	11	£132 ▲
Drawing and Painting Improvers	BATN1006A	NOR	10am - 12pm	16th January	THU	11	£132
Henna Painting	BATN1043	NOR	9am - 11:30am	9th January	THU	1	FREE
How To Make a Pin Cushion	BATN1044	LIN	1:30pm - 3:30pm	10th January	FRI	1	FREE
Introduction to Acrylic Expressionist Portraits	BATN1040	ACE	10am - 12pm	19th February	WED	1	FREE
Acrylic Expressionist Portraits for Beginners	BATN1041	ACE	10am - 12pm	26th February	WED	5	£60 ▲
Sewing and Dressmaking Beginners Plus	BATN1026B	BUR	12:30pm - 3pm	13th January	MON	11	£132 ▲
Sewing and Dressmaking Beginners Plus	BATN1045	NCC	6pm - 8pm	15th January	WED	11	£132 ▲

▲ Fee reduction may apply | ● Material fees may apply



FREE
Functional Skills
Maths, English, ICT
and ESOL courses
are also available
across East Lancashire
and the Ribble Valley
See page 30
for more details

Health and Wellbeing

Whether you are looking to enjoy a bit of 'me time' with one of our relaxation and de-stress classes, or would like to raise your food safety awareness, we have a range of Health and Wellbeing courses to suit you and your interests.

COURSE	CODE	VENUE	TIMES	DATE	DAY	WEEKS	COST
5 Ways to Improve Your Mental Wellbeing	BHBN1000C	NOR	1pm - 3pm	7th February	FRI	1	FREE
5 Ways to Improve Your Mental Wellbeing	BHBN1000E	WHA	9:30am - 11:30am	7th February	FRI	1	FREE
Basic Awareness of First Aid	BHBN1016	BFC	9:30am - 11am	13th February	THU	1	FREE
Basic Awareness of First Aid	BHBN1016B	NOR	1pm - 2:30pm	28th April	TUE	1	FREE
Basic Awareness of First Aid	BHBN1016E	WAT	1pm - 2:30pm	30th April	THU	1	FREE
Basic Awareness of Food Safety	BHBN1009C	WAT	1pm - 3pm	16th March	MON	1	FREE
Basic Awareness of Food Safety	BHBN1009A	NOR	9:30am - 11:30am	2nd April	THU	1	FREE
Be Food Smart	BHBN1008A	CLI	1pm - 3pm	17th January	FRI	1	FREE
Cooking for One	BHBN1022	NOR	9:30am - 12pm	21st January	TUE	1	FREE
Microwave Cookery	BHBN1023	NOR	9:30am - 12pm	28th January	TUE	1	FREE
Focus on Healthy Eating	BHBN1020	NOR	9:30am - 11:30am	14th January	TUE	1	FREE
Lancashire Lifesavers	BHBN1004M	BFC	9:30am - 11am	30th January	THU	1	FREE
Lancashire Lifesavers	BHBN1004R	WHA	1pm - 2:30pm	9th March	MON	1	FREE
Lancashire Lifesavers	BHBN1004O	VET	1pm - 2:30pm	17th March	TUE	1	FREE
Lancashire Lifesavers	BHBN1004W	WAT	1pm - 2:30pm	20th March	FRI	1	FREE
Lancashire Lifesavers	BHBN1004P	NOR	1pm - 2:30pm	31st March	TUE	1	FREE
Microwave Tips and Tricks	BHBN1025	NOR	9:30am - 12pm	4th February	TUE	1	FREE
Mind Calm: Find Peace in a Hectic world	BHBN1017A	WHA	9:30am - 11:30am	20th April	MON	1	FREE
Relax and De-stress	BHBN1006C	WHI	1pm - 3pm	20th April	MON	1	FREE
Relax and De-stress	BHBN1006D	NOR	9:30am - 12pm	24th April	FRI	1	FREE
Sugar Swaps	BHBN1031A	WHI	9:30am - 11:30am	15th January	WED	1	FREE

▲ Fee reduction may apply | ● Material fees may apply

Construction and Motor Vehicle

Are you looking to improve your home DIY or Motor Vehicle Maintenance skills? We have a range of courses to suit you.

COURSE	CODE	VENUE	TIMES	DATE	DAY	WEEKS	COST
CSCS (CITB)	BCSP1000	WAT	9:30am - 3:30pm	Various	TUE, THU + FRI	1	From £95 ▲
CSCS (CITB) Exam Only	BCSF1001	WAT	3:30pm - 5:30pm	Various	FRI	1	From £40
Electric and Hybrid Vehicle Level 2/3	AMTRP002	ARC	6:30pm - 9pm	21st January	TUE	9	£800
Furniture Upcycling	APADP003	ARC	1pm - 4pm	24th January	FRI	5	£80 ▲
Garden Improvement for Beginners	ABCKP003	ARC	5:30pm - 9pm	22nd January	WED	9	£150 ▲
Joinery Skills for the Home	AWFCP002	ARC	5:30pm - 9pm	22nd January	WED	9	£150 ▲
Motor Vehicle General Maintenance	AMTRP003	ARC	5:30pm - 9pm	20th January	MON	9	£150 ▲
Multiskills	ABCKP001A	ARC	5:30pm - 9pm	21st January	TUE	12	£150 ▲
Painting and Decorating Skills for the Home	APADP002	ARC	9:30am - 1pm	23rd January	THU	9	£150 ▲
Plastering Repairs for the Home	APLAP002	ARC	9:30pm - 1pm	22nd January	WED	9	£150 ▲

Facilities and Cleaning Services

From Advanced Cleaning to Biohazard, Crime and Trauma Scene Cleaning, our Facilities and Cleaning Services qualifications are suitable for those looking to advance their skills in this industry.

COURSE	CODE	VENUE	TIMES	DATE	DAY	WEEKS	COST
Facilities and Building Cleaning Level 1	BFCN1000	ARC	9:30am - 3pm	6th January	MON + TUE	4	£200 ▲
Facilities Services Principles Level 2	BFCN1001	ARC	9:30am - 3pm	9th January	THU + FRI	2	£250 ▲
Biohazard, Crime and Trauma Scene Cleaning	BFCN1003	ARC	9am - 4pm	23th + 24th January	THU + FRI	1	£295 ▲
Advanced Cleaning Level 2	BFCN1002A	ARC	9:30am - 3pm	30th January	THU + FRI	3	£250 ▲
Facilities and Building Cleaning Level 1	BFCN1000A	ARC	9:30am - 3pm	2nd March	MON + TUE	4	£200 ▲
Facilities Services Principles Level 2	BFCN1001A	ARC	9:30am - 3pm	5th March	THU + FRI	2	£250 ▲
Biohazard, Crime and Trauma Scene Cleaning	BFCN1003A	ARC	9am - 4pm	26th + 27th March	THU + FRI	1	£295 ▲

▲ Fee reduction may apply | ● Material fees may apply



COMING SOON

Introduction to Outdoor Cleaning and Window Cleaning
Enquire Now!

Languages

Our language classes are a great way to develop valuable skills. Whether you want to pick up a few phrases for your next holiday or are looking to become a fluent linguist, we can help you enhance your skills.

1 | Beginners

Suitable for complete beginners who have never previously studied the language

2 | Improvers

Suitable for those who have some previous knowledge of the language and want to improve on existing language skills

3 | Pre-Intermediate

Suitable for those who have completed the Improvers course or who have previously studied the language for 1-2 years

4 | Intermediate

Suitable for those who have completed the Pre-Intermediate course or who have previously studied the language for approximately 3 years

5 | Post-Intermediate

Suitable for those who have completed the Intermediate course or who have previously studied the language for approximately 4 years

6 | Advanced/ Conversational

Suitable for those who have completed the Post-Intermediate course or who have previously studied the language for approximately 5 years

Italian

COURSE	CODE	VENUE	TIMES	DATE	DAY	WEEKS	COST
Italian Beginners Term 2	BLGN1022C	WHA	1pm - 3pm	14th January	TUE	11	£132 ▲
History of Italian Cinematography	BLGN1039	WHA	10am - 12pm	15th January	WED	11	£132 ▲
Introduction to Italian Cuisine	BLGN1042	WOO	10am - 3:30pm	18th January	SAT	1	£39 ▲
Introduction to Italian Culture	BLGN1038	NOR	10am - 12pm	6th January	MON	1	FREE

French

COURSE	CODE	VENUE	TIMES	DATE	DAY	WEEKS	COST
French Beginners Term 2	BLGN1002E	WHA	10am - 12pm	14th January	TUE	11	£132 ▲
French Pre-Intermediate Term 2	BLGN1004B	WHA	10am - 12pm	13th January	MON	10	£120 ▲
French Intermediate Term 2	BLGN1007B	WHA	1pm - 3pm	13th January	MON	10	£120 ▲

German

COURSE	CODE	VENUE	TIMES	DATE	DAY	WEEKS	COST
German Beginners Term 2	BLGN1015D	WHA	6:30pm - 8:30pm	13th January	MON	10	£120 ▲
German Improvers Term 2	BLGN1014B	NOR	9:30am - 11:30am	15th January	WED	11	£132 ▲
A Taste of German Language, Food and Lifestyle	BLGN1036	ACE	10am - 12pm	8th January	WED	1	FREE

Spanish

COURSE	CODE	VENUE	TIMES	DATE	DAY	WEEKS	COST
Spanish Beginners Term 2	BLGN1028J	WHA	2pm - 4pm	14th January	TUE	11	£132 ▲
Spanish Beginners Term 2	BLGN1028H	NCC	6pm - 8pm	16th January	THU	11	£132 ▲
Spanish Beginners Term 2	BLGN1028I	WHA	6pm - 8pm	16th January	THU	11	£132 ▲
Spanish Improvers Term 2	BLGN1032F	WHA	9am - 11am	14th January	TUE	11	£132 ▲
Spanish Pre-Intermediate Term 2	BLGN1035B	WHA	11:30am - 1:30pm	14th January	TUE	11	£132 ▲
Spanish Advanced Term 2	BLGN1031B	PAD	9am - 11am	13th January	MON	10	£160 ▲
Spanish Conversation (Advanced) Term 2	BLGN1034A	WHA	9am - 11am	16th January	THU	11	£176

▲ Fee reduction may apply | ● Material fees may apply

British Sign Language

COURSE	CODE	VENUE	TIMES	DATE	DAY	WEEKS	COST
Introduction to British Sign Language	BLGN1000E	NOR	9:30am - 12:30pm	9th January	THU	1	FREE
Introduction to British Sign Language	BLGN1000B	OPE	9:30am - 12:30pm	16th January	THU	1	FREE



Hairdressing and Beauty

Take the first step towards a career in the Hair and Beauty industry with one of our professional skills qualifications. We also have a range of beauty and hair masterclasses which can be studied for leisure or to help you develop your professional skills set.

COURSE	CODE	VENUE	TIMES	DATE	DAY	WEEKS	COST
Hair Extensions Masterclass	ABTSP001	ARC	9:30am-4pm	27th May	WED	1	£75 + Kit ●
Hair Techniques (Hair or Barbering) Level 2 Certificate	AHASP202	ARC	6:30pm - 8:30pm + 5:30pm - 9:30pm	27th January	MON + TUE	18	£550 + Kit ▲●
Hair Techniques (Hair or Barbering) Level 2 Certificate	NHASP202	NCC	6:30pm - 8:30pm + 5:30pm - 9:30pm	29th January	WED + THU	18	£550 + Kit ▲●
Individual Lashes Masterclass	ABTSP001	ARC	9:30am - 5pm	6 April	MON	1	£70 + optional kit ●
Individual Lashes Masterclass	NBTSP001	NCC	9:30am - 5pm	17th February	MON	1	£70 + optional kit ●
Introduction to Body Massage Masterclass	NBTSP001	NCC	6pm - 9pm	28th January	TUE	10	£250
Make up Techniques Masterclass (including Eye Treatments)	ABTSP201	ARC	5:30pm - 9:30pm	11th February	TUE	18	£550 + Kit ▲●
Make up Techniques Masterclass (including Eye Treatments)	NBTSP201	NCC	5:30pm - 9:30pm	12th February	WED	18	£550 + Kit ▲●
Self Tanning Masterclass	ABTSP001	ARC	9:30am - 12pm	17th February	MON	1	£30
Self Tanning Masterclass	ABTSP001	ARC	9:30am - 12pm	26th May	TUE	1	£30
Self Tanning Masterclass	NBTSP001	NCC	9:30am - 12pm	6th April	MON	1	£30
Twinkle Toes Masterclass	ABTSP001	ARC	9:30am - 4pm	17th February	MON	1	£60
Twinkle Toes Masterclass	NBTSP001	NCC	9:30am - 4pm	6th April	MON	1	£60
Women's and Men's Hairdressing Level 2 Diploma	AHASP201	ARC	6:30pm - 8:30pm + 5:30pm - 9:30pm	11th February	TUES + WED	20	£1,810 + Kit ▲●
Women's and Men's Hairdressing Level 2 Diploma	NHASP201	NCC	6:30pm - 8:30pm + 5:30pm - 9:30pm	11th February	TUES + WED	20	£1,810 + Kit ▲●

▲ Fee reduction may apply | ● Material fees may apply

Health, Social Care, Childcare and Education

Whether you are looking to advance your knowledge within this sector to aid your career, or are interested in gaining more insight into a health or mental health condition for personal reasons, then our range of qualifications may be suitable for your needs.

COURSE	CODE	VENUE	TIMES	DATE	DAY	WEEKS	COST
Autism Spectrum Condition Level 1	BHBN1026	NCC	6pm - 9pm	16th January	THU	4	£45 ▲
Autism Spectrum Condition Level 1	BHBN1026	NCC	6pm - 9pm	3rd March	TUE	4	£45 ▲
Bitsize into Substance Misuse Awareness	BHBN1043	WAT	9:30am - 3pm	10th January	FRI	5	£15 ▲
Bitsize into Substance Misuse Awareness	BHBN1043	VET	9:30am - 12.30pm	29th January	WED	2	£15 ▲
Certificate in Common Health Conditions Level 2	BHBN1047	WAT	9:30am - 12:30pm	15th January	WED	17	£230 ▲
Certificate in Counselling Skills Level 2	AHESH201	ARC	10am - 2pm	22nd January	WED	18	£405 ▲
Certificate in Understanding Autism Level 2	BHBN1042	WAT	1pm - 4pm	9th January	THU	12	£230 ▲
Certificate in Understanding Children and Young Peoples Mental Health Level 2	BHBN1049	WAT	9:30am - 12:30pm	2nd March	MON	14	£230 ▲
Certificate in Understanding Children and Young Peoples Mental Health Level 2	BHBN1033	OPE	9:30am - 12:30pm	7th January	TUE	14	£230 ▲
Education and Training Level 3	AAHEP303	ARC	9:30am - 12:30pm	14th January	TUE	12	£425
Health and Social Care Certificate Level 1	BHBN1034	NOR	9:30am - 12:30pm	8th January	WED	12	£125 ▲
Introduction to Autism Condition	BHBN1027	NCC	6pm - 9pm	9th January	THU	1	FREE
Introduction to Autism Condition Level 1	BHBN1027	NCC	6pm - 9pm	25th February	TUE	1	FREE
Introduction to Autism Level 1	BHBN1038	OPE	9:30am - 12:30pm	15th January	WED	5	£45 ▲
Introduction to Autism Level 1	BHBN1038	WAT	9:30am - 12:30pm	28th February	FRI	5	£45 ▲
Introduction to Dementia Level 1	BHBN1078	WAT	9:30am - 12:30pm	8th January	WED	2	£45 ▲
Introduction to Learning Disabilities	BHBN1037	WAT	1:30pm - 4pm	5th March	THU	4	£45 ▲
Mental Health Awareness Certificate Level 2	BHBN1040	WAT	9:30am - 12:30pm	7th January	TUE	20	£230 ▲
Personal and Social Wellbeing Award Level 1	BHBN1035	WAT	9:30am - 12:30pm	14th January	TUE	10	£95 ▲
Preparing to Work in Adult Care Award Level 1	BHBN1035	LIN	9:30am - 12:30pm	10th January	FRI	10	£95 ▲
Preparing to Work in Adult Care Award Level 1	BHBN1046	WAT	1pm - 4pm	14th January	TUE	10	£95 ▲
Preparing to Work in Adult Care Award Level 1	BHBN1035	OPE	9:30am - 12.30pm	16th January	THU	10	£95 ▲

▲ Fee reduction may apply | ● Material fees may apply

Preparing to Work in Adult Care Certificate Level 2	BHBN1036	WAT	1pm - 4pm	6th January	MON	14	£230 ▲
Preparing to Work in Adult Care Certificate Level 2	BHBN1036	WAT	6pm - 9pm	13th January	MON	14	£230 ▲
Principles of Dementia Care Certificate Level 2	BHBN1078	WAT	9:30am - 12:30pm	22nd January	WED	10	£230 ▲
Substance Misuse Award Level 2	BHBN1048	ARC	6pm - 9pm	14th January	TUE	10	£230 ▲
Substance Misuse Award Level 2	BHBN1048	WAT	9:30am - 12.30pm	17th January	FRI	10	£230 ▲
Understanding Alcohol and Substance Misuse Level 2	BHBN1010	VET	9:30am - 12.30pm	22nd January	WED	1	£15 ▲

▲ Fee reduction may apply | ● Material fees may apply





First Steps to Higher Education

The Pre-Access courses are ideal for those who would like to enter the Access to Higher Education course but haven't got the necessary GCSE grades required. It is suited to those who have been out of education for some time and who need to re-learn how to study at a higher level before progressing onto the Access programme.

COURSE	CODE	VENUE	TIMES	DATE	DAY	WEEKS	COST
Health and Social Care Professions (Pre-Access) Level 2 Certificate	AAHEP201	ARC	9:30am - 4pm	21st January	TUE	15	£225 ▲
Health and Social Care Professions (Pre-Access) Level 2 Certificate	NAHEP201	NCC	TBC	w/c 20th January	TBC	15	£225 ▲

Horticulture

If you're looking to learn how to grow your own healthy herbs for cooking, or would like to make some spring baskets for your garden, we have a range of Horticulture courses to suit you.

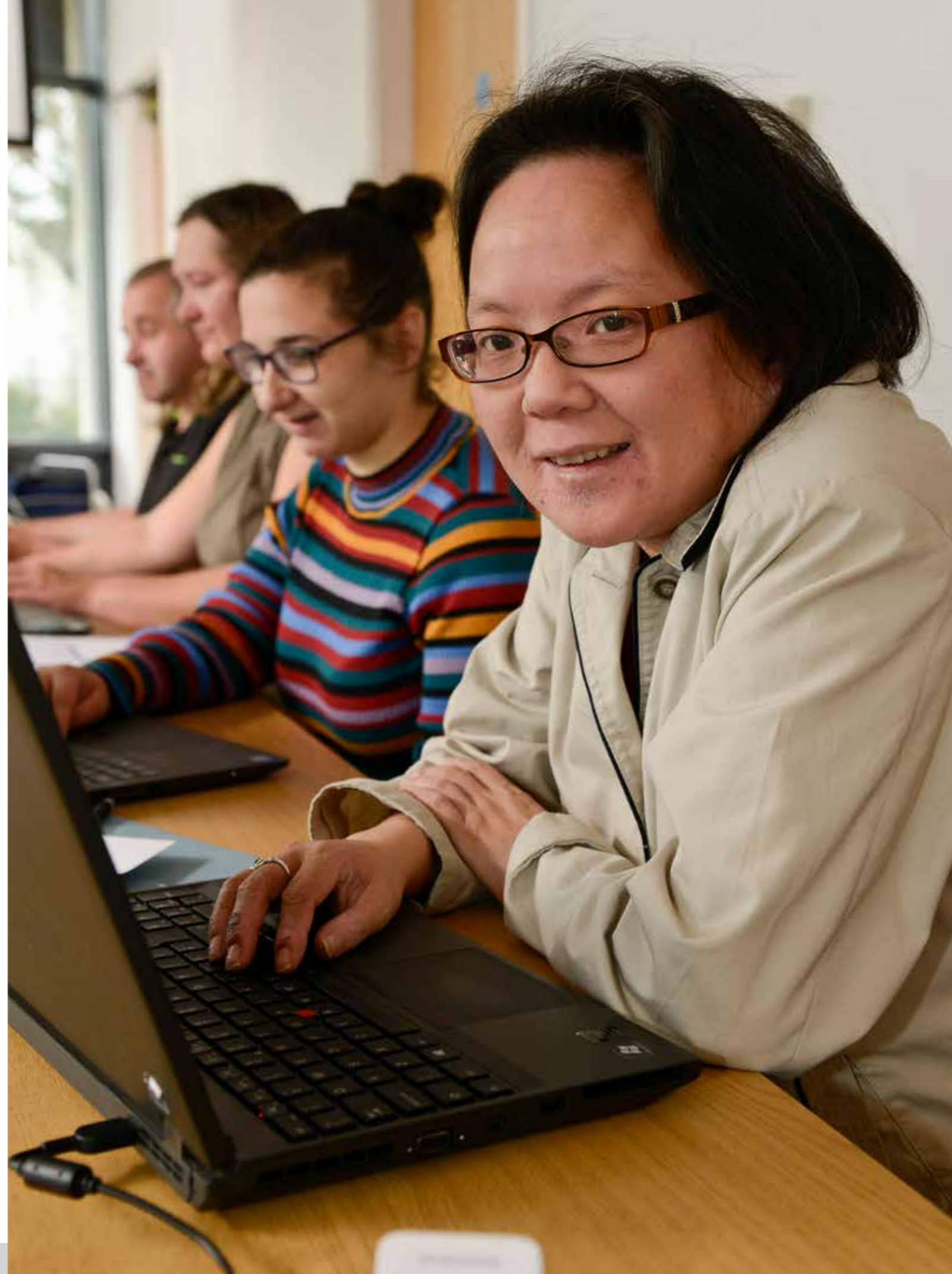
COURSE	CODE	VENUE	TIMES	DATE	DAY	WEEKS	COST
Grow Your Own Healthy Herbs	BHBN1011	BFC	9am - 12pm	16th January	THU	1	FREE
Grow Your Own Healthy Herbs	BHBN1011A	HAS	9:30am - 12:30pm	23rd January	THU	1	FREE
Seed Bombs: Wild Flowers	BHBN1019A	VAL	9:30am - 12:30pm	30th January	THU	1	FREE
Seed Bombs: Wild Flowers	BHBN1019	VET	9:30am - 12:30pm	11th February	TUE	1	FREE
Spring Baskets	BHBN1014	VAL	9:30am - 12:30pm	6th February	THU	1	FREE
Spring Baskets	BHBN1014A	WHA	9:30am - 12:30pm	13th February	THU	1	FREE
Winter Baskets	BHBN1021	NOR	9:30am - 12:30pm	14th January	TUE	1	FREE
Winter Baskets	BHBN1021A	WHA	9:30am - 12:30pm	24th January	FRI	1	FREE
Smudging for Your Senses	BHBN1012A	VAL	9:30am - 12:30pm	28th January	TUE	1	FREE
Smudging for Your Senses	BHBN1012	BFC	9am - 12pm	4th February	TUE	1	FREE

Sport

Open the door to a career within the Sports and Leisure industry by choosing our Fitness Instructor professional skills qualification.

COURSE	CODE	VENUE	TIMES	DATE	DAY	WEEKS	COST
Level 2 Fitness Instructor	ASPOP201	ARC	6pm - 9pm	3rd February	MON	11	£315 ▲

▲ Fee reduction may apply | ● Material fees may apply



FAST-TRACK



YOUR CAREER WITH A UNIVERSITY LEVEL QUALIFICATION



Gain
a higher level qualification locally

Improve
your promotion opportunities

Increase
your earning potential

Earn more
learn more, progress more

HIGHER LEVEL QUALIFICATIONS ON OFFER:

Applied Sciences

HNC in Applied Biology
HNC/D in Computing - **January Start Available**
BSc (Hons) in Sports Science and Coaching Studies

Building and Engineering

HNC/D in Construction - Built Environment - **January Start Available**
HNC/D in Engineering
Degree Apprenticeship in Electrical / Electronic Technical Support Engineer or Degree Apprenticeship Manufacturing Engineer
BEng (Hons) Manufacturing Engineering (Top-Up)

- January Start Available

BEng (Hons) Electrical and Electronic Engineering (Top-Up)
- **January Start Available**

Higher Level Apprenticeship in Construction and Building Services Management

Business and Professional Services

HNC/D in Business - **January Start Available**
Foundation Degree in Coaching and Mentoring - **January Start Available**
Foundation Degree in Paralegal Services
Higher Level Apprenticeship in Accounting
Higher Level Apprenticeship in Business and Professional Administration
Higher Level Apprenticeship in Commercial Procurement and Supply
Higher Level Apprenticeship in Leadership and Management
Higher Level Apprenticeship in Operations/Departmental Manager
Higher Level Apprenticeship in School Business Professional

Education and Childcare

PGCE Certificate in Education
Foundation Degree in Early Years
Foundation Degree in Early Years (Childhood Studies)
Foundation Degree in Teaching and Learning Support
BA (Hons) in Early Childhood Studies
BA (Hons) in Education and Professional Development
Postgraduate Diploma in Education (Advanced PGCE)

Health and Social

Foundation Degree in Alcohol and Substance Misuse Work
Foundation Degree in Counselling Studies
Foundation Degree in Health and Social Care
Higher Level Apprenticeship in Children, Young People and Families Manager.
Higher Level Apprenticeship in Children, Young People and Families Practitioner
Foundation Degree in Mental Health Work
Foundation Degree in Working with Children and Families
BA (Hons) in Counselling and Psychotherapy Studies (Top-Up)
BA (Hons) in Health and Applied Social Studies
Higher Level Apprenticeship in Assistant Practitioner

Humanities

Foundation Degree in Criminology and Criminal Justice
- **January Start Available**

January and September starts available



Not got the entry requirements? Our Pre-Access and Access courses provide a route into higher level study for those without the relevant qualifications. There are January starts available for Pre-Access to help you on your graduate journey. **Enquire today!**

HE LOANS AVAILABLE*

APPLY TODAY! Call 0333 033 1717

*To apply for a HE loan, please visit www.gov.uk/student-finance

APPRENTICESHIPS AREN'T JUST FOR YOUNG PEOPLE!

Each year hundreds of thousands of adults gain the skills and qualifications they need to progress and increase their earning power through an Adult Apprenticeship.

RECRUITING NOW

ACROSS A WIDE RANGE OF SECTORS INCLUDING

- Business and Professional Services
- Catering and Hospitality
- Education and Childcare
- Construction and Motor Vehicle
- Engineering and Manufacturing
- Hair and Beauty
- Health and Social Care
- Retail, Sales and Customer Services
- Sport and Leisure



Speak to a member of our Apprenticeship Team today

01282 440 319 apprenticeships@nelson.ac.uk



Enhance your career prospects.

With a Professional Skills Qualification

Whether you are looking to advance in your career, retrain in a new industry, refresh your existing skill set, or simply looking to unlock new opportunities, our Professional Skills qualifications enable you to take the first step towards achieving your goal.

Qualifications available in the following industry areas:

Business and Professional Services

Construction and CSCS

Creative and Digital

Engineering

Facilities and Cleaning Services

Hairdressing and Beauty

Health Awareness and Social Care

Motor Vehicle

Sport and Leisure

Plus much more!

Order
your copy of
the Professional
Skills Guide
today!



ACCRINGTON & ROSSENDALE
COLLEGE
PROFESSIONAL SKILLS

NELSON & COLNE
COLLEGE
PROFESSIONAL SKILLS



Find your extraordinary.



For more information, pick up a copy of our Professional Skills Guide.
Call ☎ 0333 003 1717 or visit 🌐 www.nelson.ac.uk | www.accross.ac.uk

Lancaster, Morecambe and the Fylde Coast



Location Key

COR | The Cornerstone
Sulyard Street, Lancaster, LA1 1PX

BOL | Bolton-le-Sands Library
Main Road, Bolton-le-Sands,
Carnforth, LA5 8DN

DRI | The Drive Methodist Church
268 Clifton Drive South, Lytham St
Annes, FY8 1LH

EMM | Emmanuel at the Mount Church
Loffhouse Way and Mount Road,
Fleetwood, FY7 6RE

HAL | Halton Mill
Mill Lane, Lancaster, LA2 6ND

LME | Lancaster Methodist Church
Scotforth Road, Lancaster, LA1 4TE

OUR | Our Lady Star of the Sea Parish Church
63 St Annes Road, Lytham
St Annes, FY8 1UL

SAL | Saltcotes Community Centre
Saltcotes Place, Lytham St Annes, FY8
4HP

SHA | Sharpes Cafe
First Light Trust, 63-65 Market Street,
Lancaster, LA1 1JG

STA | St Annes Library
254 Clifton Drive South, Lytham St
Annes, FY8 1NR

STO | The Storey
Meeting House Lane, Lancaster,
LA1 1TH

THO | St Thomas' Parish and Community Centre
Church Street, Garstang, PR3 1PA

UOC | University of Cumbria
Bowerham Road, Lancaster, LA1 3JD

Arts and Media

Our great range of Arts and Media courses are an ideal find and learn a new skill or hobby. From Silver Jewellery to Print Making, Painting to Mandala Art, we can help you enhance your creative flair. Meaning there really is something for everyone!

COURSE	CODE	VENUE	TIMES	DATE	DAY	WEEKS	COST
Art Appreciation Theodore Major Industrial Landscapes	BATN1049	STO	1pm - 3pm	7th January	TUE	1	FREE
Drawing and Painting Beginners Plus	BATN1051	STO	1pm - 3pm	14th January	TUE	11	£132 ▲
Make a Bag	BATN1051	UOC	9am - 1pm	7th January	TUE	1	FREE
Mandala Art	BATN1038A	UOC	2pm - 4:30pm	7th January	TUE	1	FREE
Mandala Art	BATN1038	BOL	10am - 12pm	6th January	MON	1	FREE
Introduction to Print Making	BATN1040	STO	10am - 12pm	7th January	TUE	1	FREE
Print Making	BATN1050	STO	10am - 12pm	14th January	TUE	11	£132 ▲
Sewing and Dressmaking Beginners	BATN1026C	UOC	1pm - 3pm	14th January	TUE	11	£132 ▲
Sewing and Dressmaking Improvers	BATN1037A	UOC	9:30am - 12pm	14th January	TUE	11	£132 ▲
Silver Jewellery Advanced	BATN1027A	HAL	6:30pm - 9pm	14th January	TUE	11	£220 ▲●
Silver Jewellery Beginners/Beginners Plus	BATN1028A	HAL	6:30pm - 9pm	13th January	MON	10	£200 ▲●
Silver Jewellery Intermediate	BATN1029A	HAL	9:30am - 12pm	13th January	MON	10	£200 ▲●
Silver Jewellery: an Introduction to Precious Metal Clay	BATN1030A	HAL	9:30am - 4pm	10th January	FRI	1	£64 ▲●
Silver Jewellery: Make Personalised Presents	BATN1039	HAL	9:30am - 3pm	17th January	FRI	1	£40 ▲●



FREE
Functional Skills
Maths, English, ICT
and ESOL courses
are also available
across Lancaster,
Morecambe
and Fylde Coast
See page 30
for more details

Humanities

Join one of our Humanities courses to spark your love for learning and introduce you to new theories and ideas about the world around you.

COURSE	CODE	VENUE	TIMES	DATE	DAY	WEEKS	COST
Creative Writing Beginners	BHNN1000D	UOC	1pm - 3pm	13th January	MON	10	£120 ▲
Creative Writing Beginners	BHNN1000B	HAL	10am - 12pm	17th January	FRI	10	£120 ▲
Lancashire's Lost Castles	BHNN1007	LME	1pm - 3pm	6th January	MON	1	FREE
Philosophy Improvers	BHNN1006	LME	10am - 12pm	16th January	THU	11	£132 ▲
Shakespeare's Writings for Beginners	BHNN1005	LME	10am - 12pm	6th January	MON	1	FREE
Tudor and Stuart Lancashire	BHNN1010	UOC	10am - 12pm	13th January	MON	10	£120 ▲



▲ Fee reduction may apply | ● Material fees may apply

▲ Fee reduction may apply | ● Material fees may apply

Health and Wellbeing

Whether you are looking to make positive changes to your physical health and wellbeing, or learn a new skill we have range of Health and Wellbeing courses to suit you and your needs.

COURSE	CODE	VENUE	TIMES	DATE	DAY	WEEKS	COST
5 Ways to Improve Your Mental Wellbeing	BHBN1000F	COR	10am - 12pm	7th February	FRI	1	FREE
Basic Awareness of First Aid	BHBN1016D	COR	1pm - 2:30pm	24th January	FRI	1	FREE
Basic Awareness of First Aid	BHBN1016A	EMM	1pm - 2:30pm	28th January	TUE	1	FREE
Basic Awareness of First Aid	BHBN1016C	OUR	9:30am - 11am	14th February	FRI	1	FREE
Chair Based Exercise with Drumming	BHBN1002D	SHA	9:30am - 11:30am	2nd April	THU	1	FREE
Focus on Healthy Eating	BHBN1015	EMM	1pm - 3pm	16th January	THU	1	FREE
Gratitude: The Key to a Joyful Life	BHBN1032	STA	1pm - 3pm	28th April	TUE	1	FREE
Kindfulness: Unlock Happiness with Kindness	BHBN1030A	COR	1pm - 3pm	2nd April	THU	1	FREE
Lancashire Lifesavers	BHBN1004N	EMM	9:30am - 11am	14th January	TUE	1	FREE
Lancashire Lifesavers	BHBN1004T	OUR	9:30am - 11am	31st January	FRI	1	FREE
Lancashire Lifesavers	BHBN1004V	COR	6pm - 7:30pm	21st April	TUE	1	FREE
Sugar Swaps	BHBN1031	OUR	9:30am - 11:30am	16th January	THU	1	FREE



Languages

Our language classes are a great way to develop valuable skills. Whether you want to pick up a few phrases for your next holiday or are looking to become a fluent linguist, we can help you enhance your language skills.

1 | Beginners

Suitable for complete beginners who have never previously studied the language

2 | Improvers

Suitable for those who have some previous knowledge of the language and want to improve on existing language skills

3 | Pre-Intermediate

Suitable for those who have completed the Improvers course or who have previously studied the language for 1-2 years

4 | Intermediate

Suitable for those who have completed the Pre-Intermediate course or who have previously studied the language for approximately 3 years

5 | Post-Intermediate

Suitable for those who have completed the Intermediate course or who have previously studied the language for approximately 4 years

6 | Advanced/ Conversational

Suitable for those who have completed the Post-Intermediate course or who have previously studied the language for approximately 5 years

French

COURSE	CODE	VENUE	TIMES	DATE	DAY	WEEKS	COST
French Beginners Term 2	BLGN1002F	UOC	6:30pm - 8:30pm	13th January	MON	10	£120 ▲
French Intermediate Term 2	BLGN1007C	UOC	1pm - 3pm	14th January	TUE	11	£132 ▲
French Post-Intermediate Term 2	BLGN1005D	UOC	10am - 12pm	14th January	TUE	11	£132 ▲

Italian

COURSE	CODE	VENUE	TIMES	DATE	DAY	WEEKS	COST
Italian Beginners Term 2	BLGN1022E	UOC	6:30pm - 8:30pm	15th January	WED	11	£132 ▲

Latin

COURSE	CODE	VENUE	TIMES	DATE	DAY	WEEKS	COST
Latin Improvers Term 2	BLGN1027A	UOC	1pm - 3pm	16th January	THU	11	£132 ▲

Spanish

COURSE	CODE	VENUE	TIMES	DATE	DAY	WEEKS	COST
Spanish Beginners Term 2	BLGN1028L	UOC	6:30pm - 8:30pm	13th January	MON	10	£120 ▲
Spanish Improvers Term 2	BLGN1032H	UOC	6:30pm - 8:30pm	16th January	THU	11	£132 ▲
Spanish Post-Intermediate Term 2	BLGN1033D	UOC	10am - 12pm	16th January	THU	11	£132 ▲

British Sign Language

COURSE	CODE	VENUE	TIMES	DATE	DAY	WEEKS	COST
Introduction to British Sign Language	BLGN1000G	UOC	9:30am - 12:30pm	23rd January	THU	1	FREE
Introduction to British Sign Language	BLGN1000D	DRI	9:30am - 12:30pm	30th January	THU	1	FREE

▲ Fee reduction may apply | ● Material fees may apply

▲ Fee reduction may apply | ● Material fees may apply

Work Clubs and Employability

Looking for a job?

We offer a range of **FREE** employability courses to help you develop your CV, prepare for interviews and support you in finding suitable employment. Please call to find your nearest course.

We also run a series of Work Clubs, three hour sessions for up to six weeks for those people who are actively seeking a job. You will get help and advice with cover letters and application forms, and will be advised about relevant training opportunities and courses. We will show you how to search and apply for the latest jobs locally, nationally and abroad.

Our Work Clubs are **FREE** to attend and are run in venues close to where you live.

Work Clubs

LOCATION	DAY	TIMES	FOR MORE INFO
Chorley Library	MON	9:15am - 12:15pm	0333 003 1717
Leyland Library	TUE	9:15am - 12:15pm	0333 003 1717
Morecambe Library	THU	9:15am - 12pm	0333 003 1717
Scotland Road Training Centre, Nelson	FRI	9:15am - 12:15pm	0333 003 1717
The Storey, Lancaster	MON	1pm - 4pm	0333 003 1717

Work Clubs

Please ask at the JCP office to book onto the below sessions

LOCATION	DAY	TIMES
Accrington Job Centre Plus	FRI	9:30am - 12:30pm
Ormskirk Job Centre Plus	THU	1pm - 4pm
Burnley Job Centre Plus	MON	9:30am - 12pm

Digital Skills for Job Seeking

Improve your computer skills to become a more confident job seeker.

LOCATION	DAY	TIMES
Ormskirk Job Centre Plus	THU	10am - 12pm

Our Work Clubs are FREE to attend and run in venues across the county!

Creating Successful Applications

LOCATION	DATE	DAY	TIMES
Burnley Central Library	11th February	TUE	9:15am - 12:15pm
Colne Library	19th March	THU	9:15am - 12:15pm
Lancashire Adult Learning (Northlight)	14th January	TUE	9:15am - 12:15pm
More Music, Morecambe	3th March	TUE	9:15am - 12:15pm
Cotton Court Business Centre, Preston	7th January	TUE	9:15am - 12:15pm
St Marys Church Hall (Priory), Leyland	10th March	TUE	9:15am - 12:15pm
St Marys Church Hall (Priory), Leyland	4th February	TUE	9:15am - 12:15pm
St Marys Church Hall (Priory), Leyland	31st March	TUE	9:15am - 12:15pm
St Annes Library	25th February	TUE	9:15am - 12:15pm
The Ecumenical Centre, Skelmersdale	28th January	TUE	9:15am - 12:15pm
The Ecumenical Centre, Skelmersdale	24th March	TUE	9:15am - 12:15pm
The Storey, Lancaster	24th January	FRI	9:15am - 12:15pm

Interview Masterclass

LOCATION	DATE	DAY	TIMES
Colne Library	19th March	THU	12:45pm - 3:45pm
Lancashire Adult Learning (Northlight)	14th January	TUE	12:45pm - 3:45pm
Linkbridge Community Centre, Burnley	11th February	TUE	12:45pm - 3:45pm
More Music, Morecambe	3rd March	TUE	12:45pm - 3:45pm
Cotton Court Business Centre, Preston	7th January	TUE	12:45pm - 3:45pm
St Mary's Church Hall (Priory), Leyland	10th March	TUE	12:45pm - 3:45pm
St Mary's Church Hall (Priory), Leyland	4th February	TUE	12:45pm - 3:45pm
St Mary's Church Hall (Priory), Leyland	31st March	TUE	12:45pm - 3:45pm
St Annes Job Centre Plus	25th February	TUE	12:45pm - 3:45pm
The Ecumenical Centre, Skelmersdale	28th January	TUE	12:45pm - 3:45pm
The Ecumenical Centre, Skelmersdale	24th March	TUE	12:45pm - 3:45pm
The Storey, Lancaster	24th January	FRI	12:45pm - 3:45pm

Customer Services Level 1

LOCATION	DATE	DAY	WEEKS	TIMES
Linkbridge Community Centre, Burnley	7th January	TUE	6	9:30am-12:30pm
Cotton Court Business Centre, Preston	25th February	TUE	6	9:30am-12:30pm



Family Learning



Are you looking to take the first steps towards a career in education?

Our range of family learning courses are designed to prepare you for progression on to further learning and training to start your career in education. They can help you develop an understanding of the teaching and learning environment in a school setting and how to support the wellbeing of a child or young person in education.

COURSE	VENUE	TIMES	DATE	DAY	WEEKS
CACHE Level 1 Award Preparing to Work in Schools	MIC	6pm - 8:30pm	8th January	WED	12
CACHE Level 1 Award Preparing to Work in Schools	NCC	6pm - 8:30pm	7th January	TUE	12
CACHE Level 1 Award Preparing to Work in Schools	WAT	9am - 11:30am	8th January	WED	12
CACHE Level 1 Award Preparing to Work in Schools	NOR	9am - 11:30am	6th January	MON	11
CACHE Level 2 Award in Support Work in Schools and Colleges	LIN	9:30am - 12pm	8th January	WED	12
CACHE Level 2 Award in Support Work in Schools and Colleges	NCC	6pm - 8:30pm	8th January	WED	12
Volunteer Training: Parents as Readers in School	NOR	9:30am - 12pm	21st January	TUE	1
Volunteer Training: Parents as Readers in School	NOR	9:30am - 12pm	2nd April	THU	1

To find out more about our Family Learning courses and their cost, please contact Lancashire Adult Learning on **0333 003 1717**. These courses are free to anyone unemployed and in receipt of qualifying benefits.

Location Key

LIN | Linkbridge Community Centre
1 Swinless Street,
Burnley, BB10 3NB

MIC | St Michael's CE High School
Astley Road, Chorley, PR7 1RS

NCC | Nelson and Colne College
Scotland Road, Nelson, BB9 7YT

NOR | Lancashire Adult Learning
Northlight, Brierfield Mill, Glen Way, Brierfield, BB9 5NH

WAT | The Waterside Centre
St James Court West,
Accrington BB5 1NA

Do you already work in a school or nursery? Are you a parent with school age children?

Lancashire Adult Learning's Family Learning Team works in partnership with local schools and nurseries to offer a wide range of FREE, fun courses to families across Lancashire.

Our courses are a great way for parents, grandparents and carers to learn together with their child and discover more about how their children learn. Courses take place within the school or nursery setting and are delivered by fully qualified

teachers. They include sessions such as LEGO Robotics, Let's Engineer, Look Who's Talking (speech and language development), Family English and Maths, plus many more!

If you work with families and would like to know how our Family Learning Team can work with your organisation, or if you are a parent and want to find out more about our courses, call **0333 003 1717**.

Learning in Libraries

Lancashire Libraries are committed to providing lifelong learning opportunities for their local communities and are working in partnership with Lancashire Adult Learning to offer a variety of courses for adults, children and families. Start a course that is of interest to you and learn at your own pace within a group.

Courses Include:

- Art for Wellbeing
- Coding with Lego Robotics and Ozobots
- Crafts for Wellbeing
- Creative Writing for Active Minds
- First Aid
- Functional Skills ICT
- Health and Wellbeing
- Languages for Active Minds
- Local and Family History
- Get Online and Save Money
- Get Online and Get Started with Social Media
- Get Online and Access Public Services
- Get Online and Get Started with Emails
- and much more...

Your local library also offers:

- Free to borrow printed resources
- Free to download eBooks and audiobooks
- Free access to the internet on PCs and WiFi
- Spaces for quiet study
- Free access at home to online resources for study and learning
- Knowledgeable staff in branches and online (through 'Ask a Lancashire Librarian' chat service)



Call in to your local library to find out what's happening in your area.

Visit www.lancashire.gov.uk/libraries or phone **0300 123 6703**

Functional Skills

English and Maths



From Entry 1 - Level 2

**Do you need to improve your English and Maths skills?
Do you want to boost your employment prospects?**

Our **FREE** English and Maths courses will help you develop skills for home, work or if you are looking for employment.

We offer short, flexible courses across Lancashire at a wide range of venues including:

- Accrington
- Burnley
- Colne
- Chorley
- Fleetwood
- Hyndburn
- Lancaster
- Leyland
- Morecambe
- Nelson
- Preston
- Rossendale
- Skelmersdale

Assessment required.

**Call us today
on 0333 003 1717
to find your nearest
introductory and
assessment
session!**



Functional Skills

ESOL



English for Speakers of Other Languages

Do you need to improve your English language skills?

Learning or improving your English will help you in all aspects of life, including social skills, studying and getting a job. If English isn't your first language, our ESOL courses will help you to improve your speaking, reading, writing, listening, grammar and punctuation.

We offer short, flexible courses across Lancashire at a wide range of venues including:

- Accrington
- Burnley
- Chorley
- Hyndburn
- Lancaster
- Morecambe
- Nelson
- Preston
- Rossendale
- St Annes

Assessment required.

**Call us today
on 0333 003 1717
to find your nearest
introductory and
assessment
session!**



Functional Skills

ICT



**Do you need to improve your ICT skills?
Do you want to boost your employment prospects?**

Our **FREE** ICT courses will help you develop skills for home, work or if you are looking for employment.

We offer short, flexible courses across Lancashire at a wide range of venues including:

- 📍 Accrington
- 📍 Burnley
- 📍 Chorley
- 📍 Fleetwood
- 📍 Hyndburn
- 📍 Lancaster
- 📍 Leyland
- 📍 Morecambe
- 📍 Pendle
- 📍 Preston
- 📍 Rossendale
- 📍 Skelmersdale

Assessment required.

**Call us today
on 0333 003 1717
to find your nearest
introductory and
assessment
session!**



Get Online



Free short courses to build essential digital skills.

A range of **FREE** courses for adults aged 19 and over who want to learn new skills to help them get online or use digital technology, or who may wish to build on their existing knowledge.

Courses Include:

- 📍 Get to Know Your iPad / Tablet
- 📍 Get Online and Prevent Identity Theft
- 📍 Get Online and Access Public Services
- 📍 Get Online and Access Emails
- 📍 Get Online and Get Started with Social Media
- 📍 and much more....

**Call us today
on 0333 003 1717
to find out more!**



Additional Learning Support

Need support with learning?

We have a dedicated team of professionals who support learners with any disability or learning support needs. Our team is committed to ensuring that every learner has the support and resources to achieve their full potential. Whether you have a special educational need or a disability, the ALS team will be there for you every step of the way, providing tailored support to help you get the most out of learning.

If you have a physical disability, visual impairment or hearing impairment, we will do our best to provide you with all the support, equipment, access and learning resources you might need throughout your time with Lancashire Adult Learning. This support is confidential and information provided will only be shared with the appropriate professionals to meet your individual needs.

If you have a learning difficulty or disability, for example, Dyslexia, Dyspraxia or Asperger Syndrome, we have

specialist teams of staff who will be able to support you throughout your time with Lancashire Adult Learning.

If you have learning support needs, please mention this when you enrol onto a Lancashire Adult Learning course, to your teacher, or during your interview. A member of our Additional Learning Support Team will then contact you to discuss your needs and ensure that the appropriate support is in place for the start of your course.

Lancashire Adult Learning
☎ 0333 003 1717 ✉ als@lal.ac.uk

Nelson and Colne College
☎ 01282 440 200 ✉ l.support@nelson.ac.uk

Accrington and Rossendale College
☎ 01254 354 050 ✉ lsupport@accross.ac.uk

Information, Advice and Guidance

Want advice about a course or new career?

Our expert team provide FREE, impartial and confidential support with:

- Choosing the right course
- Careers advice and CV development
- Understanding Labour Market Information
- Exploring career options, employment, Apprenticeship, university or volunteering opportunities.

Appointments can be arranged at local community venues at a time to suit you. Our advice is free to all adults aged 19 years and over in Lancashire.

Please contact any of our Careers Zone advisers for further assistance:

Lancashire Adult Learning
☎ 0333 003 1717 ✉ iag&careers@lal.ac.uk

Nelson and Colne College
☎ 01282 440 259 ✉ careerzone@nelson.ac.uk

Accrington and Rossendale College
☎ 01254 354 037 ✉ info@accross.ac.uk

How to Enrol

Found a course that you would like to try? Enrolling is easy and there are lots of ways you can sign up.

🌐 **Online:** www.lal.ac.uk

Please note: It is not possible to enrol online if the course you wish to enrol on requires an interview, or you are paying the reduced fee.

☎ **By telephone:** 0333 003 1717, option 1 for Lancashire Adult Learning, option 2 for Higher Education or option 3 for Professional Skills

👤 **In person:** At Lancashire Adult Learning, Northlight, Glen Way, Brierfield, BB9 5NH,

Nelson and Colne College, Scotland Rd, Nelson BB9 7YT

Accrington and Rossendale College, Broad Oak Campus, Broad Oak Rd, Accrington BB5 2AS

Or at one of our **Information and Advice Events** (see below for details).

✉ **By post:** Send details of the course(s) you want to attend along with a cheque made payable to 'Nelson and Colne College' to the **Enrolment Team at Lancashire Adult Learning, Glen Way, Brierfield, BB9 5NH.**

Please note that this can only be done for courses that do not require an interview or assessment.

Book early to avoid disappointment!
How to pay

You can pay by VISA, Mastercard, cheque, or cash. Payments in instalments may be available for some

courses. Please enquire for further details.

Please note an additional charge will be applied for courses which carry material costs.

What you need to enrol

- Details of the course(s) you are interested in
- Payment for your course
- Proof of benefits if you are applying for fee remission

Can I get help with my fees?

For some courses reduced fees or full fee remission may be available if you are in receipt of:

- Jobseeker's Allowance
- Employment and Support Allowance (Work Related Activity Group)
- Universal Credit
- Another state benefit (conditions apply)

Eligible learners can attend a maximum of two fee remitted courses each year and must show proof of their benefits at enrolment.

To view our refund policy, please visit our websites at www.lal.ac.uk or www.nelson.ac.uk or www.accross.ac.uk

Loans

For some of our professional qualifications marked in this guide, learners can apply for loans to cover the costs of their course. The following loans may be available for you to apply for:

HE Loans: www.slc.co.uk

Advanced Learner Loans:
www.gov.uk/advanced-learner-loan

Please enquire for more information.

Nelson and Colne College

Tuesday 7th January
5pm - 7pm

Accrington and Rossendale College

Thursday 9th January
5pm - 7pm

The Waterside Centre, Accrington

Wednesday 8th January
11am-3pm

Adult Information and Advice Events

Nelson and Colne College

Tuesday 7th January
5pm - 7pm

The Waterside Centre, Accrington

Wednesday 8th January
11am-3pm

Accrington and Rossendale College

Thursday 9th January
5pm - 7pm

Part of the

NELSON & COLNE
COLLEGE

GROUP

All details are correct at the time of print. Courses may change or be cancelled subject to demand. For the latest information, please visit www.lal.ac.uk, www.nelson.ac.uk or www.accross.ac.uk
Please book early to avoid disappointment.