

FLOOR MATTING DIRECTORY 5

FLOOR MATTING

**SpecialistMats**.co.uk

Prices can be viewed online at [www.specialistmats.co.uk](http://www.specialistmats.co.uk)



## **Welcome to the Specialist Mats Floor Matting Directory.**

We offer a comprehensive range of matting solutions for commercial, industrial, retail and leisure applications.

These products have been carefully selected from reliable sources worldwide, providing consistent quality and availability at competitive prices.

Samples and further information can be obtained by contacting us:

**[www.specialistmats.co.uk](http://www.specialistmats.co.uk)**

**[Info@specialistmats.co.uk](mailto:Info@specialistmats.co.uk)**

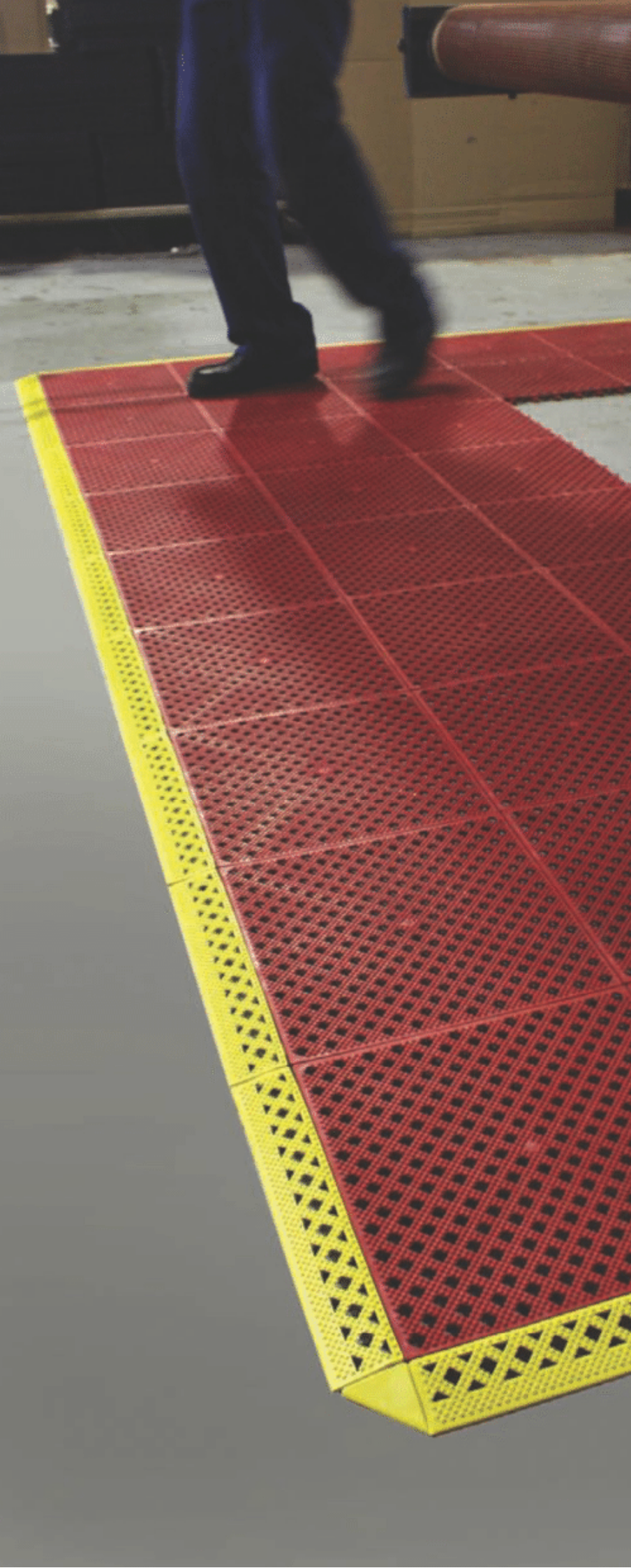
**0845 226 7800**

### Important Notes

- 1) Mat sizes listed are nominal
- 2) The reproduction of colours in this catalogue is as accurate as colour printing processes allow.
- 3) The customer is responsible for determining the suitability of any product for the designed application.

All rights reserved. No part of this publication may be reproduced in any material form (including photocopying or storing it in any medium by electronic means and whether or not transiently, or incidentally to some other use of this publication) without the written permission of the copyright owner. Application for the copyright owner's permission to reproduce any part of this publication should be addressed to Blue Diamond.

© E&OE



# INDUSTRIAL MATS

Standing for long periods of time on cold, hard floors causes general fatigue plus a host of other health complaints. These conditions, coupled with slips, trips and falls lead to decreased productivity, absenteeism and ultimately cost employers millions each year. Blue Diamond industrial mats are designed to reduce these occupational risks to a minimum and create a safe, comfortable working environment.

Up to 80% of workers who stand at work suffer from backache, headaches, poor circulation or knee and foot problems. Research has proved that using an anti-fatigue mat during an 8 hour period reduces tiredness and increases comfort by 50% in comparison to a hard floor. The matting encourages posture change and insulates the feet from temperature extremes and vibration, often reducing levels of absenteeism by up to 30%.

20% of accidents in the workplace are caused by slips, trips and falls. Anti-slip surfacing or raised duckboards can eliminate these risks by keeping feet off wet, slippery floors.

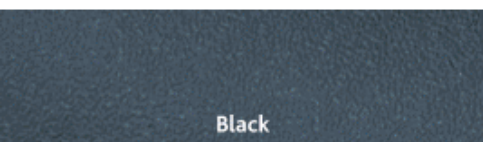
Breakage of delicate items and tools can be costly and troublesome to clean up. Matting can be utilised to protect both floors and equipment.



## Kumfi Rib

- Light duty anti-fatigue mat for use in dry areas.
- Closed cell PVC sponge relieves leg and back discomfort.
- Ribbed surface and anti-trip bevels for safety.
- Overall height 9.4mm

	Code	Metric	Imperial
Mats	KR2436	60cm x 90cm	2' x 3'
	KR3660	90cm x 150cm	3' x 5'
	KR310	90cm x 300cm	3' x 10'
	KR4872	120cm x 180cm	4' x 6'
Rolls	KR260	60cm x 18.3m	2' x 60'
	KR360	90cm x 18.3m	3' x 60'
	KR375	90cm x 23m	3' x 75'
	KR460	120cm x 18.3m	4' x 60'
Cut lengths	KR24	60cm wide	2' wide
	KR36	90cm wide	3' wide
	KR48	120cm wide	4' wide



## Kumfi Pebble

- Light-duty industrial anti-fatigue mat available with yellow safety borders.
- For use in dry areas.
- Closed cell vinyl foam with pebble surface for traction.
- Anti-trip bevel edges.
- Overall height 9.4mm

	Code	Metric	Imperial
Mats	KP2436	60cm x 90cm	2' x 3'
	KP3660	90cm x 150cm	3' x 5'
	KP310	90cm x 300cm	3' x 10'
	KP4872	120cm x 180cm	4' x 6'
Rolls	KP260	60cm x 18.3m	2' x 60'
	KP360	90cm x 18.3m	3' x 60'
	KP375	90cm x 23m	3' x 75'
	KP460	120cm x 18.3m	4' x 60'
Cut lengths	KP24	60cm wide	2' wide
	KP36	90cm wide	3' wide
	KP48	120cm wide	4' wide



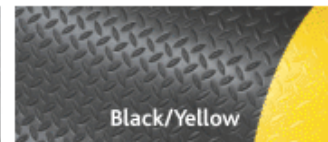


## Kumfi Diamond

- Extra thick mat with chequer pattern surface and bevelled edges, providing excellent worker comfort and safety.
- Tough vinyl Dyna-Shield coating provides 50% more wear resistance.
- For medium duty industrial use in dry areas.
- Overall height 12.7mm.

	Code	Metric	Imperial
Mats	KD2436	60cm x 90cm	2' x 3'
	KD3660	90cm x 150cm	3' x 5'
Rolls	KD260	60cm x 18.3m	2' x 60'
	KD360	90cm x 18.3m	3' x 60'
	KD460	120cm x 18.3m	4' x 60'

Custom sizes available: 60cm, 90cm or 120cm wide, up to 18.3m long.



## Kumfi Bubble

- Identical to Kumfi Diamond but with unique bubble design.
- Tough vinyl Dyna-Shield coating provides 50% more wear resistance.
- For medium duty industrial use in dry areas.
- Overall height 12.7mm.

	Code	Metric	Imperial
Mats	KB2436	60cm x 90cm	2' x 3'
	KB3660	90cm x 150cm	3' x 5'
Rolls	KB260	60cm x 18.3m	2' x 60'
	KB360	90cm x 18.3m	3' x 60'
	KB460	120cm x 18.3m	4' x 60'

Custom sizes available: 60cm, 90cm or 120cm wide, up to 18.3m long.



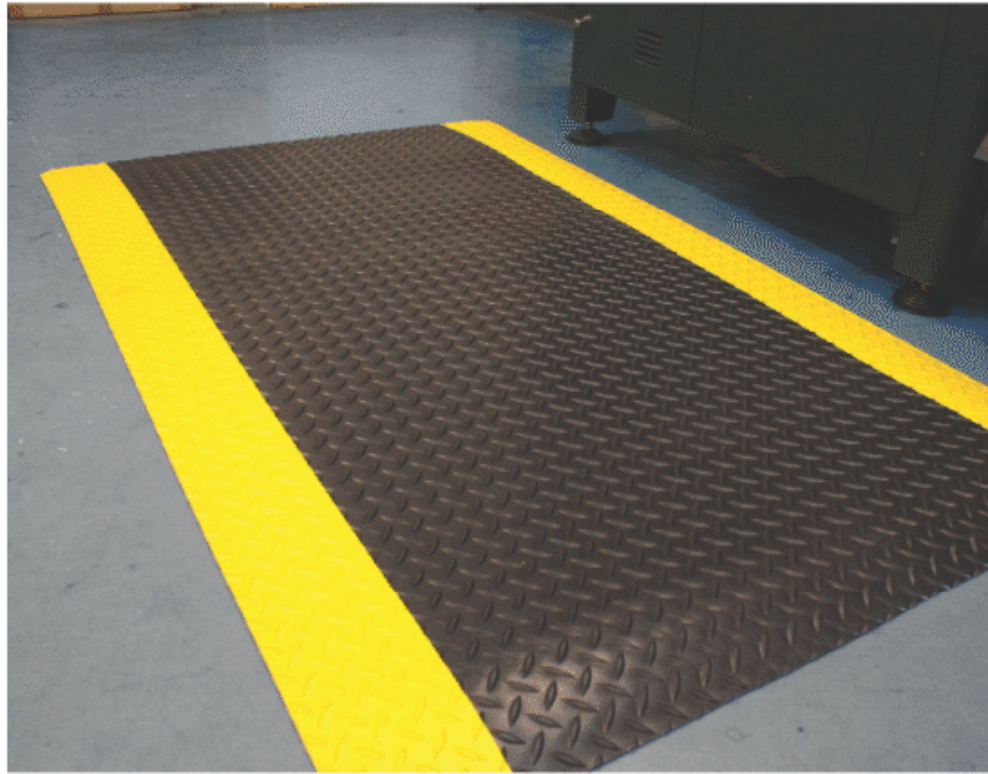


## Kumfi Tough

- Premium vinyl sponge matting for dry areas in heavy duty industrial environments.
- Slip resistant deckplate top surface bonded to dense sponge base for optimum worker comfort.
- Yellow edge option for safety awareness.
- Overall height 14.3mm.

	Code	Metric	Imperial
Mats	KU2436	60cm x 90cm	2' x 3'
	KU3660	90cm x 150cm	3' x 5'
	KU310	90cm x 300cm	3' x 10'
Rolls	KU320	90cm x 6m	3' x 20'
	KU275	60cm x 23m	2' x 75'
	KU375	90cm x 23m	3' x 75'
	KU475	120cm x 23m	4' x 75'

Custom sizes available: 60cm, 90cm or 120cm wide, up to 23m long.



Black



Black/Yellow



## Kumfi Tough Super

- Super thick alternative to Cushion Trax, offering extreme level of comfort.
- Slip resistant deckplate top surface bonded to dense sponge base.
- Yellow edging option for safety awareness.
- Overall height 25.4mm.

	Code	Metric	Imperial
Mats	KS3660	60cm x 150cm	3' x 5'
	KS310	90cm x 300cm	3' x 10'
	KS320	90cm x 6m	3' x 20'
Rolls	KS375	90cm x 23m	3' x 75'
	KS475	120cm x 23m	4' x 75'

Custom sizes available: 90cm or 120cm wide, up to 23m long.



Black



Black/Yellow



## Texture Top

- Embossed anti-slip rubber top surface.
- For heavy duty use in dry industrial environments.
- Overall height 12.7mm.

	Code	Metric	Imperial
Mats	TT2436	60cm x 90cm	2' x 3'
	TT3660	90cm x 150cm	3' x 5'
Rolls	TT275	60cm x 23m	2' x 75'
	TT375	90cm x 23m	3 x 75'
	TT475	120cm x 23m	4' x 75'
	TT24	60cm wide	2' wide
Cut lengths	TT36	90cm wide	3' wide
	TT48	120cm wide	4' wide



## New Range

Products featured on this page have a hardwearing top surface, laminated to a resilient microcellular sponge base for maximum durability coupled with effective fatigue relief. Bevelled on all four sides to minimise trip hazard.



## Marble Top

- Easy-to-clean smooth rubber top surface with marble-ised pattern.
- Ideal for laboratory use.
- Overall height 12.7mm

	Code	Metric	Imperial
Mats	MT2436	60cm x 90cm	2' x 3'
	MT3660	90cm x 150cm	3' x 5'
Rolls	MT275	60cm x 23m	2' x 75'
	MT375	90cm x 23m	3 x 75'
	MT475	120cm x 23m	4' x 75'
	MT24	60cm wide	2' wide
Cut lengths	MT36	90cm wide	3' wide
	MT48	120cm wide	4' wide

## Nature Top

- Easy-to-clean woodtone top surface combines style and comfort.
- For heavy duty office environments.
- Overall height 12.7mm.

	Code	Metric	Imperial
Mats	NT2436	60cm x 90cm	2' x 3'
	NT3648	90cm x 120cm	3' x 4'
	NT3660	90cm x 150cm	3' x 5'
Rolls	NT375	90cm x 23m	3 x 75'
Cut lengths	NT36	90cm wide	3' wide





## Ergomax

- Bubble surface for optimal ergonomic effects and sure footing in stationary standing positions.
- Overall height 14mm.

Code	Metric	Imperial
EM2637	65cm x 95cm	26" x 37"
EM2653	65cm x 135cm	26" x 53"
EM2672	65cm x 183cm	26" x 72"
EM3749	95cm x 125cm	37" x 49"
EM3763	95cm x 160cm	37" x 63"
EM3773	95cm x 185cm	37" x 73"

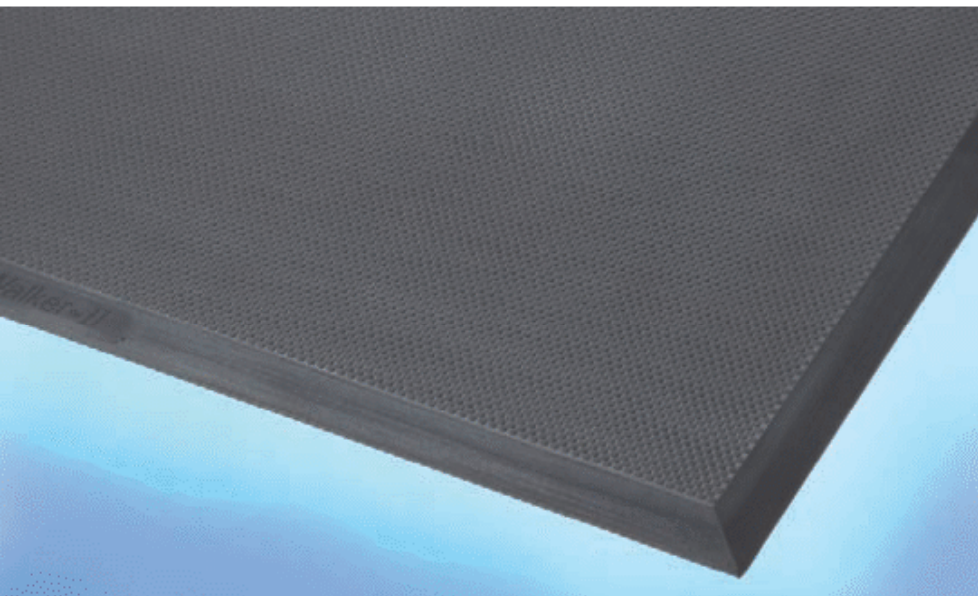


## Ergomax Range

High quality polyurethane foam anti-fatigue mats for medium duty use in dry areas. Closed cell structure provides high thermal performance. Suitable for use in class 2 clean rooms.



Custom sizes available. Please ask for details.



## Ergomax II

- Fine pebble surface allows twist turns and freedom of movement while maintaining ergonomic properties.
- Overall height 13mm.

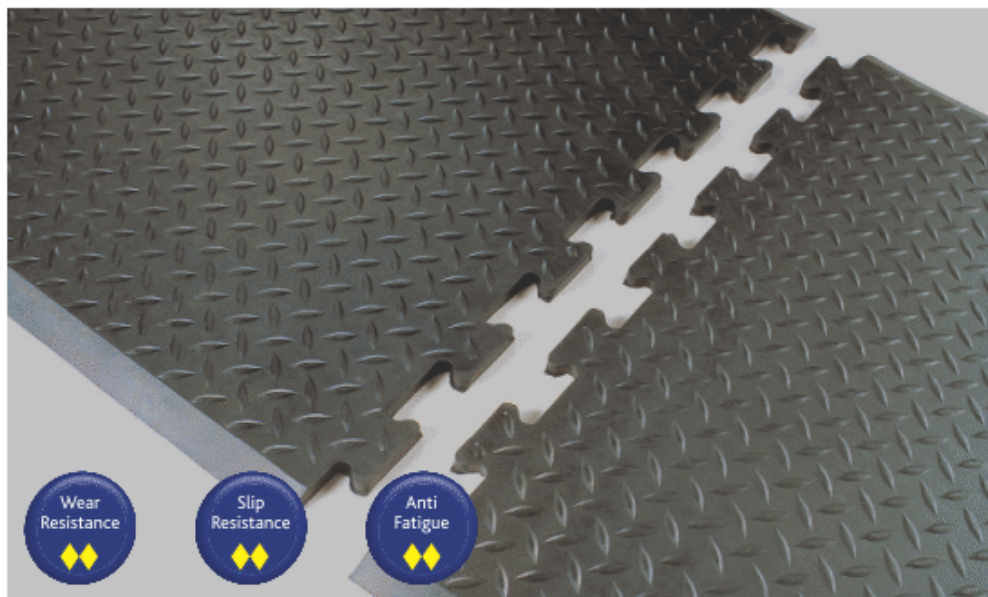
Code	Metric	Imperial
ET2637	65cm x 95cm	26" x 37"
ET2653	65cm x 135cm	26" x 53"
ET2672	65cm x 183cm	26" x 72"
ET3749	95cm x 125cm	37" x 49"
ET3763	95cm x 160cm	37" x 63"
ET3773	95cm x 185cm	37" x 73"



## Diamond Interlock

- Tough, interlocking rubber mats for simple on-site installation in dry industrial environments.
- Provides easy relocatable continuous lengths, suitable for medium duty use.
- Trip resistant bevels on all sides.
- Deckplate design and moulded air pockets provide traction and ergonomic benefits.
- Overall height 12.7mm

Code	Metric	Imperial
DC2831(Centre tiles)	71cm x 79cm	28" x 31"
DE2831 (End tiles)	71cm x 79cm	28" x 31"







## Cushion Link Solid Top

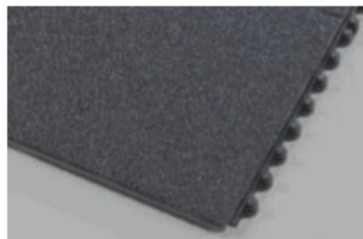
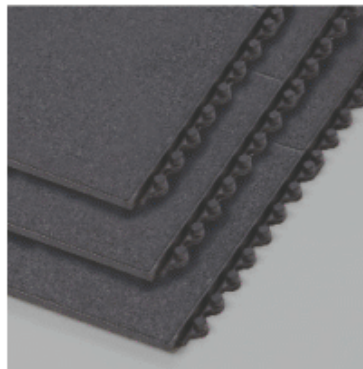
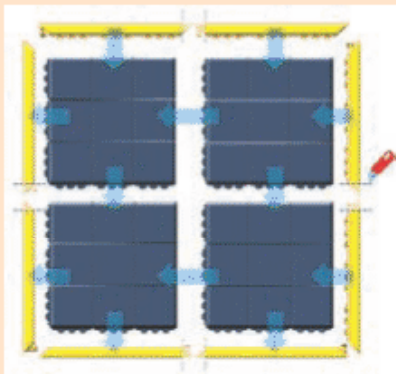
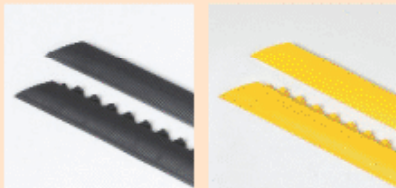
- The ultimate for ergonomic comfort and safety in heavy duty dry industrial applications.
- Mats can be interlocked and edged using the simple bevel system to create any mat size and shape.
- Anti-slip pebble texture surface with unique underside design provides superb anti-fatigue properties.
- Compatible with Cushion Ease open top system (see page 27).
- Manufactured from high quality resilient rubber compounds, resistant to extreme temperatures and most chemicals.
- Overall height 19mm.

Code	Type	Size
CLS36GP	General Purpose	91cm x 91cm
CLS36N	Nitrile	91cm x 91cm
CLS36NFR	Nitrile FR	91cm x 91cm
CLS36NFRA	Nitrile FR Abrasive	91cm x 91cm
CLS36SNFR	Static Dissipative Nitrile FR	91cm x 91cm
CLS36CNFR	Conductive Nitrile FR	91cm x 91cm
CLS36BB	Black Bevel	91cm long
CLS36YB	Yellow Bevel	91cm long



## Ramp System

Male and female attachable bevels available in black or yellow.



Available in six types as listed.

### General Purpose

- General purpose rubber compound.

### Nitrile Rubber

- 75% nitrile rubber compound, grease resistant.

### Nitrile Rubber FR

- 100% nitrile rubber compound, oil proof and fire retardant, suitable for welding areas.

### Nitrile Rubber FR Abrasive Coating

- 100% nitrile rubber compound, oil proof and fire retardant, suitable for welding areas.
- Abrasive coating for extremely slippery areas (slip resistant RB according to DIN51130).

### Static Dissipative Nitrile Rubber FR

- 100% nitrile rubber compound.
- Static dissipative - meets IEC61340-4-1, measured resistance  $R_g 10^6-10^9\Omega$ ,  $R_p 10^6-10^9\Omega$ .

### Conductive Nitrile Rubber FR

- 100% nitrile rubber compounds.
- Conductive - meets IEC61340-4-1, measured resistance  $R_g 10^6-10^9\Omega$ ,  $R_p 10^6-10^9\Omega$ .



## Cushion Link Open Top

- Superb ergonomic comfort and safety in heavy duty dry or wet industrial applications, including food areas.
- Mats can be interlocked and edged using the simple bevel system to create any mat size and shape.
- Open top allows liquids to drain away, leaving a safe work surface.
- Compatible with Cushion Ease Solid Top system (see page 26).
- Manufactured from high quality resilient rubber compounds, resistant to extreme temperatures and most chemicals.
- Overall height 19mm.

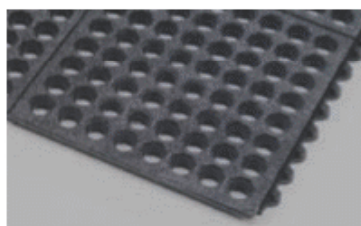
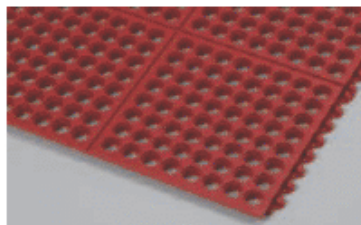
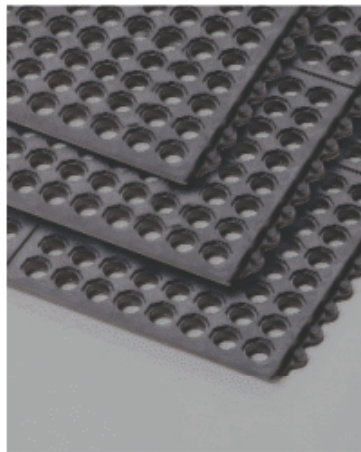
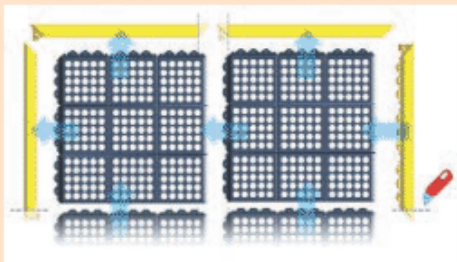


Code	Type	Size
CLO36GP	General Purpose	91cm x 91cm
CLO36N	Nitrile FR	91cm x 91cm
CLO36BR	Brake Fluid Resistant	91cm x 91cm
CLO36NAB	Nitrile Anti-bacterial	91cm x 91cm
CLO036NR	Nitrile Red	91cm x 91cm
CLO36NFRA	Nitrile FR Abrasive	91cm x 91cm
CL36BB	Black Bevel	91cm long
CL36YB	Yellow bevel	91cm long
CL36RB	Red bevel	91cm long



## Ramp System

Male and female attachable bevels available in black, yellow or red.



Available in six types as listed.

### General Purpose

- General purpose rubber compound.

### Nitrile Rubber FR

- 100% nitrile rubber compound, oil proof and fire retardant, suitable for welding areas.

### Brake Fluid Resistant FR

- 100% EPDM rubber compound, brake fluid resistant.

### Nitrile Rubber Anti-Bacterial

- Anti-bacterial 100% nitrile rubber compound, suitable for use in food processing plants.

### Nitrile Red Rubber

- 75% nitrile rubber compound, grease resistant, suitable for contact with vegetable oil and animal fats in food service applications.

### Nitrile Rubber FR Abrasive Coating

- 100% nitrile rubber compound, oil proof and fire retardant, suitable for welding areas.
- Abrasive coating for extremely slippery areas. (Slip resistance R13 according to DIN 51130).



## Oilzone

- High quality anti-fatigue duckboard matting for wet or dry industrial use.
- Made from 100% nitrile rubber, designed to withstand industrial oils and harsh chemicals.
- Drainage holes and raised studs allow fluids and debris to fall through, leaving a clear top surface.
- Aggressive slip resistant surface.
- Highly visible orange bevelled borders on three sides for safety.
- Can be simply cleaned with detergent or water-jet.
- Overall height 22mm.

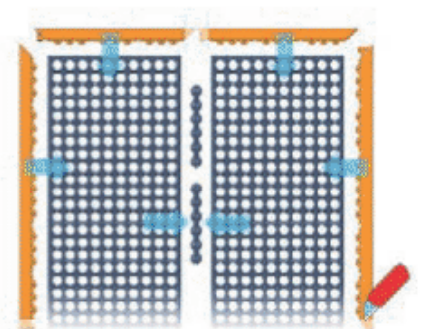
Code	Description	Size
OZ2640	Bevelled Mat	66cm x 102cm
OZ3864	Bevelled Mat	97cm x 163cm
OZ310	Bevelled Mat	97cm x 315cm



## Oilzone Custom

- Interconnectable straight-edged version of Oilzone, allowing any size and shape to be created.
- Ideal for covering large areas.
- Effective connector strip and bevel system can be applied on site and simply adapted for inside or outside corners.

Code	Description	Size
OC3660	Un-edged Mat	91cm x 152cm
OC36B	Orange Bevel	91cm long
OC60B	Orange Bevel	152cm long
OC12C	Connector	30cm long





## Tuffzone

- Heaviest grade of PVC matting custom built to individual requirements in any shape or size.
- Suitable for the most demanding industrial applications, in wet or dry areas.
- Reinforced structure designed to withstand wheeled trucks.
- Mats are plastic welded together, ensuring highest possible joint strength.
- Three year warranty against manufacturers defects.
- Overall height 22mm.

Component	Metric	Imperial
Tile	30.48cm x 30.48cm	1' x 1'
Ramp Edge	15.24cm x 30.48cm	6" x 1'
Corner Ramp	15.24cm x 15.24cm	6" x 6"



Surestep version available with abrasive anti-slip coating, designed for extremely slippery areas.

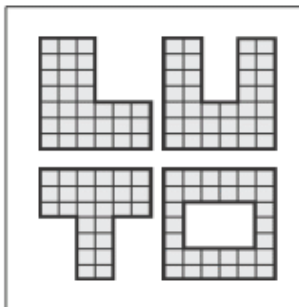
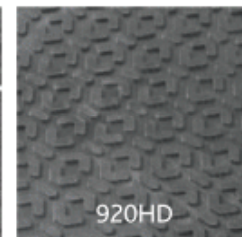
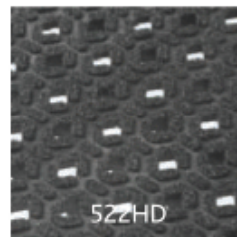
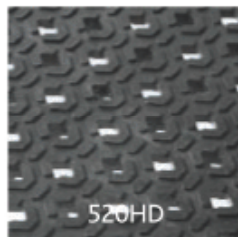


Figure 1 : Custom shapes

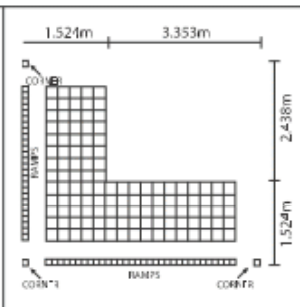


Figure 2 : Draw a sketch



Figure 3 : The pieces

### Guide for ordering custom size matting

- Each of the products can be custom-designed for a specific work station (See figure 1) or used in continuous lengths.
- Ramp edges can be specified for any or all sides as required.
- Mat is factory assembled (Extra large mats are made in sections to facilitate shipping and handling).
- To order, provide a simple sketch that illustrates the shape, dimensions and ramped edges (See figure 2).
- See figure 3 for dimensions of components.
- If you plan to add to your mat at a later date, please specify when ordering.

Available in four types as illustrated above.

#### 520HD - Heavy duty

- Perforated to facilitate drainage of spills.
- Weight 15.8 kg per m<sup>2</sup>.

#### 522HD - Heavy duty with Surestep

- Perforated to facilitate drainage of spills.
- With Surestep abrasive coating.
- Weight 15.8 kg per m<sup>2</sup>.

#### 920HD - Heavy duty solid

- Closed top.
- Weight 16.2 kg per m<sup>2</sup>.

#### 922HD - Heavy duty solid with Surestep

- Closed top.
- With Surestep abrasive coating.
- Weight 16.2 kg per m<sup>2</sup>.



## Workzone

- Multi-purpose duckboard type mat with safety anti-slip surface and bevels on all sides.
- Honeycomb design allows liquids to disperse quickly, leaving surface clear.
- Easy to handle for cleaning purposes.
- Overall height 13mm

Available in two types as listed

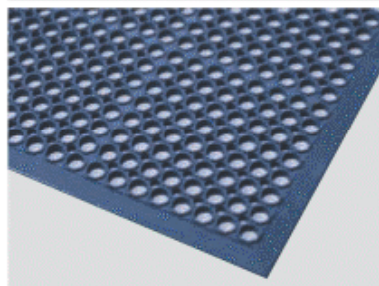
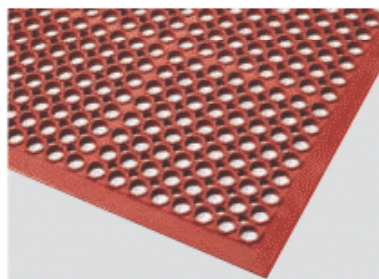
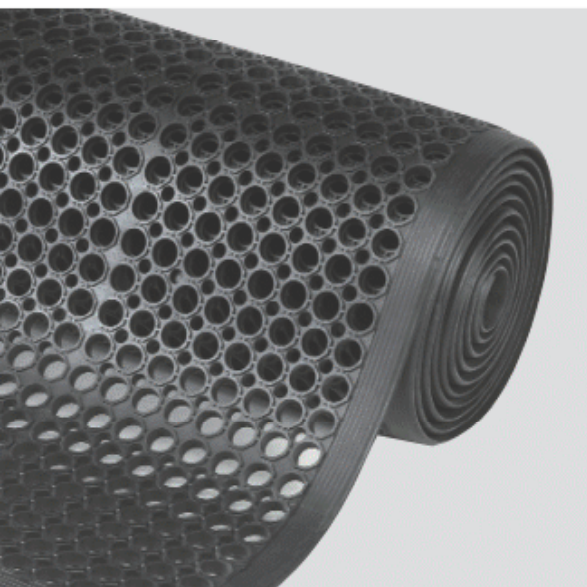
Standard Black

- Suitable for heavy duty industrial use in wet or dry areas.

Red or Blue

- 75% nitrile grease resistant rubber suitable for use in food service applications.

Code	Metric	Imperial
WZ3660	91cm x 152cm	3' x 5'
WZ310	91cm x 297cm	3' x 10'
WZ320	91cm x 594cm	3' x 20'





## Workzone Deluxe

- Tough rubber duckboard matting, offering exceptional comfort and safety in heavy duty applications.
- Straight edges allow mats to be joined in both directions using connectors available, to cover large areas around machinery.
- Drainage holes and raised studs allow fluid and debris to fall through, leaving a clear surface.
- Designed to withstand harsh chemicals and yield a long service life.
- Aggressive slip-resistant surface.
- Anti-trip bevel system available. (see details below).
- Overall height 20mm

Available in three types as listed

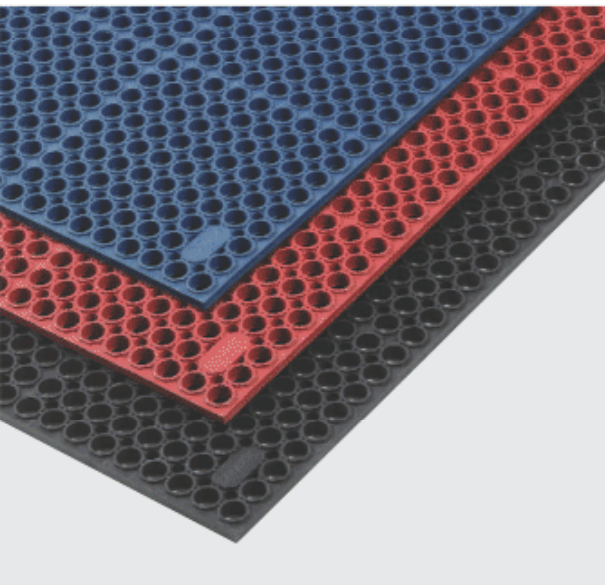
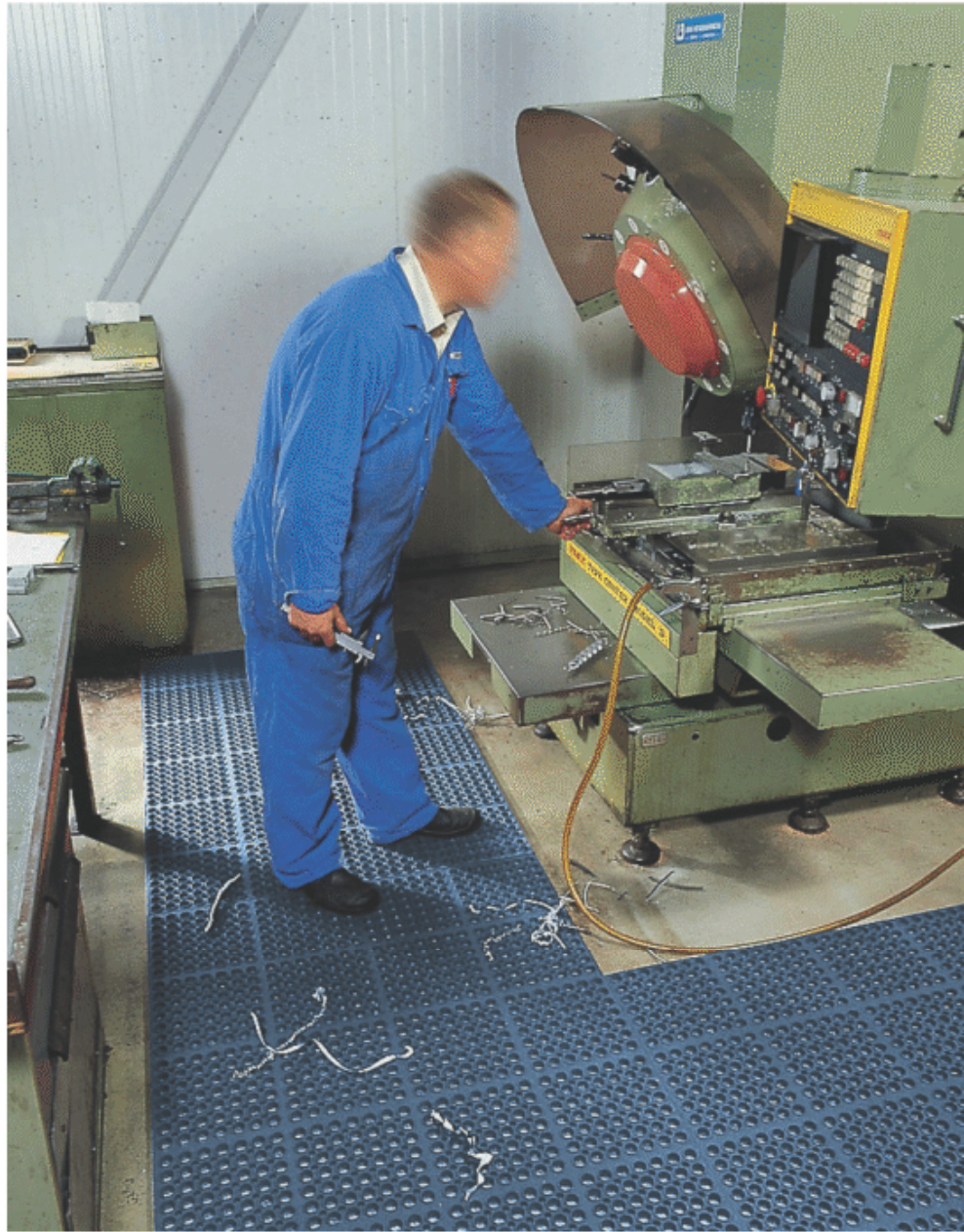
Standard Black

- Suitable for heavy duty industrial use in wet or dry areas.

Red or Blue

- 75% nitrile grease resistant rubber suitable for use in food service applications.

Code	Colour	Size
WD3660	Mat	91cm x 152cm
WDC	Connector - Black	
WD36B	Bevel - Yellow 91cm long	
WD60B	Bevel - Yellow 152cm long	



### Bevel System

Attachable vinyl bevels are available in two sizes. These can be supplied with internal or external corners, or straight ends to suit individual requirements. A simple sketch, showing dimensions and positions of bevels will ensure that appropriate components are supplied.



## Surefoot

- Duckboard mats suitable for medium duty industrial use in wet or oily areas, including food applications.
- Drainage slots and raised studs underneath allow fluids and debris to fall through, keeping the surface clear.
- Made of 100% PVC, resistant to industrial oils.
- Overall height 11mm.

Surestep version available, with abrasive anti-slip coating, designed for extremely slippery areas.



Standard Surestep	Metric	Imperial
SF3648	SFGS3648 90cm x 120cm	3' x 4'
SF3672	SFGS3672 90cm x 180cm	3' x 6'
SF310	SFGS310 90cm x 300cm	3' x 10'
SF333	SFGS333 90cm x 10m	3' x 33'



## Ecosorb

- Nitrile rubber duckboard mats with replaceable sorbent, for medium duty use in wet or oily industrial environments.
- Rough gripper surface and raised ramps hold sorbent firmly in place.
- Bubble design and moulded air pockets provide basic fatigue relief.
- Overall height 12.7mm.

Code	Metric	Imperial
ES3660 (Mat)	87cm x 157cm	3' x 5'
ES3660R (Refill)	(To suit above mat)	





## Safety Scrape

- 100% nitrile rubber mat, providing superb anti-slip traction, even in wet or oily areas.
- Moulded scrapers remove heavy dirt and swarf from shoes.
- Ideal for heavy industrial and catering applications.
- Easy to clean, simply hose off.
- Ultra low profile 5mm height.

Code	Metric	Imperial
SS2436	60cm x 90cm	2' x 3'
SS3660	85cm x 150cm	3' x 5'
SS310	85cm x 300cm	3' x 10'
SS4872	113cm x 180cm	4' x 6'
SS410	113cm x 180cm	4' x 10'



## Happy Feet

- Solid top anti-fatigue mat, resistant to chemicals, animal fats, machine oils and petroleum products.
- Dense cushion core, encapsulated within solid 100% nitrile rubber for heavy industrial use including welding areas.
- Bevelled borders and gripper backing to minimise mat movement.
- Safe for use in computer rooms and other static sensitive areas.
- Overall height 12mm.

Code	Metric	Imperial
HF2436	58cm x 85cm	2' x 3'
HF3660	85cm x 150cm	3' x 5'
HF310	85cm x 300cm	3' x 10'



Black Border



Black/Yellow Border





## Chef Mat

- Greaseproof rubber anti-fatigue mat for wet or dry use in demanding kitchen applications.
- Underside suction cups and bevelled edges for safety.
- Easy-clean solid surface with no holes or cavities for bacteria to hide.
- Drainage grooves allow liquids and debris to escape.
- Overall height 12mm.

Code	Metric	Imperial
CM3648	90cm x 120cm	3' x 4'



## Hygimat

- Resilient rubber anti-fatigue mat, suitable for non-greasy food preparation areas.
- Underside suction cups and bevelled edges for safety.
- Easy-clean solid surface with no holes or cavities for bacteria to hide.
- Drainage grooves allow liquids and debris to escape, leaving surface clean.
- Overall height 12mm.

Code	Metric	Imperial
HM3648	90cm x 120cm	3' x 4'





## Ergotred

- A versatile anti-fatigue mat providing superb worker comfort at a very economical price.
- Manufactured from heavy duty flexible rubber with bevelled yellow safety edges and suction cup backing.
- Domed surface texture designed to improve circulation and provide comfortable massaging effect.
- Suitable for heavy industrial use in dry areas.
- Overall height 15mm.

Code	Metric	Imperial
ER3648	90cm x 120cm	3' x 4'



## Euromat

- A durable anti-fatigue mat with anti-slip chequer pattern surface.
- Manufactured from heavy duty flexible rubber with bevelled yellow safety edges and suction cup backing.
- Suitable for heavy industrial use in dry areas.
- Overall height 12mm.

Code	Metric	Imperial
EU3648	90cm x 120cm	3' x 4'





## Interflex

- Traditional grid welded PVC duckboard matting for medium duty industrial and commercial use.
- Oil, grease and chemical resistant recycled PVC with etched anti-slip surface.
- Connector clips for side or end joining.
- Overall height 12.5mm

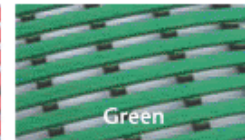
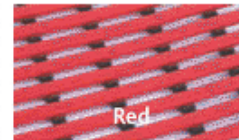
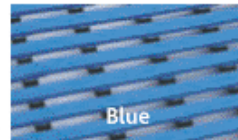
See page 51 for Interflex Leisure matting

	Code	Metric	Imperial
Rolls	IF1633*	40cm x 10m	16" x 33'
	IF2033*	50cm x 10m	20" x 33'
	IF2433	60cm x 10m	24" X 33'
	IF3233	80cm x 10m	32" x 33'
	IF3933	100cm x 10m	39" x 33'
	IF4733*	120cm x 10m	47" x 33'
	IFC	Connectors	
Cut lengths	IF24	60cm wide	24" wide
	IF32	80cm wide	32" wide
	IF39	100cm wide	39" wide

\* To special order, please allow 6 weeks delivery.



Now available in 4 colours



## Interflex Hazard

- Hardwearing black PVC matting with high visibility yellow strips down each side for workplace safety.
- Suitable for medium duty industrial use.
- Oil, grease and chemical resistant.
- Connector clips available for side or end joining.
- Overall height 12.5mm

	Code	Metric	Imperial
Rolls	IH2433	60cm x 10m	24" x 33'
	IH3233	80cm x 10m	32" x 33'
	IH3933	100cm x 10m	39" x 33'
	IFC	Connectors	
Cut lengths	IH24	60cm wide	24" wide
	IH32	80cm wide	32" wide
	IH39	100cm wide	39" wide

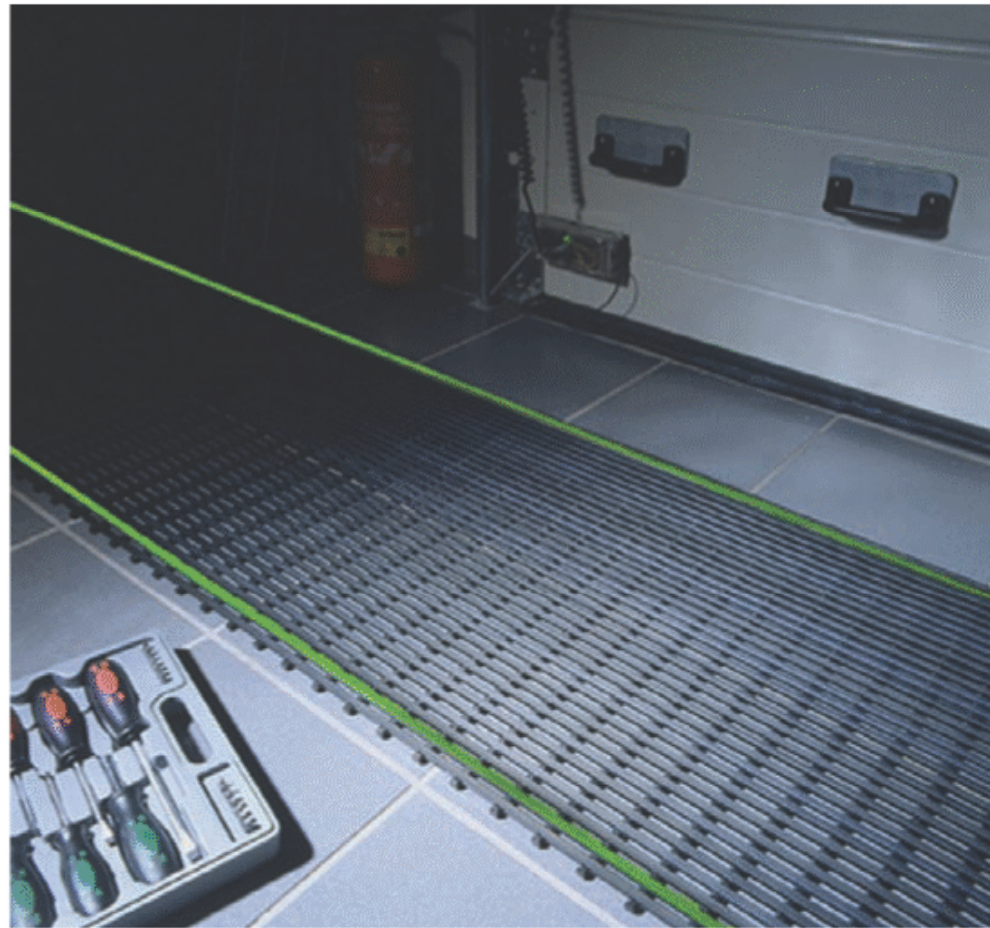




## Interflex Glow

- Duckboard matting with photoluminescent safety stripes to highlight escape routes in emergencies and times of sudden darkness.
- Suitable for medium duty industrial applications.
- Grid welded PVC construction provides worker comfort and allows liquids to drain away.
- Connector clips available for side or end joining.
- Overall height 12.5mm

	Code	Metric	Imperial
Rolls	IP2433	60cm x 10m	24" x 33'
	IP3233	80cm x 10cm	32" x 33'
	IP3933	100cm x 10m	39" x 33'
	IFC	Connectors	
Cut lengths	IP24	60cm wide	24" wide
	IP32	80cm wide	32" wide
	IP39	100cm wide	39" wide



## Interflex Grip

- Extremely tough duckboard matting with aggressive anti-slip surface, suitable for heavy duty industrial use.
- Made from recycled plastic and synthetic rubber, resistant to most acids, oils and industrial chemicals.
- Open grid construction offers fatigue relief and allows liquids and swarf to disperse safely.
- Overall height 21mm.

	Code	Metric	Imperial
Rolls	IG2433	60cm x 10m	24" x 33'
	IG3233	80cm x 10m	32" x 33'
	IG3933	100cm x 10m	39" x 33'
Cut lengths	IG24	60cm x 10m	24" wide
	IG32	80cm x 10m	32" wide
	IG39	100cm x 10m	39" wide

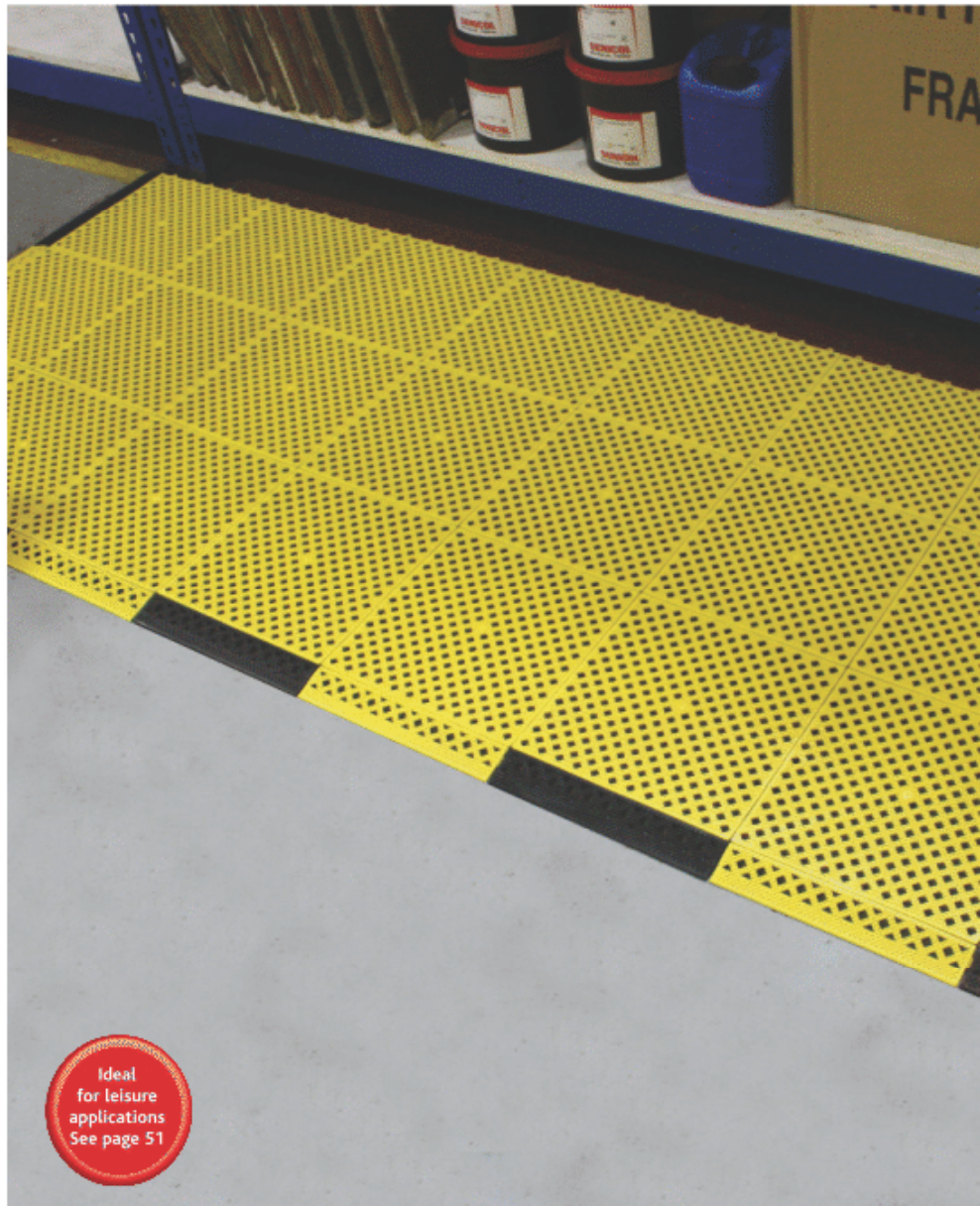




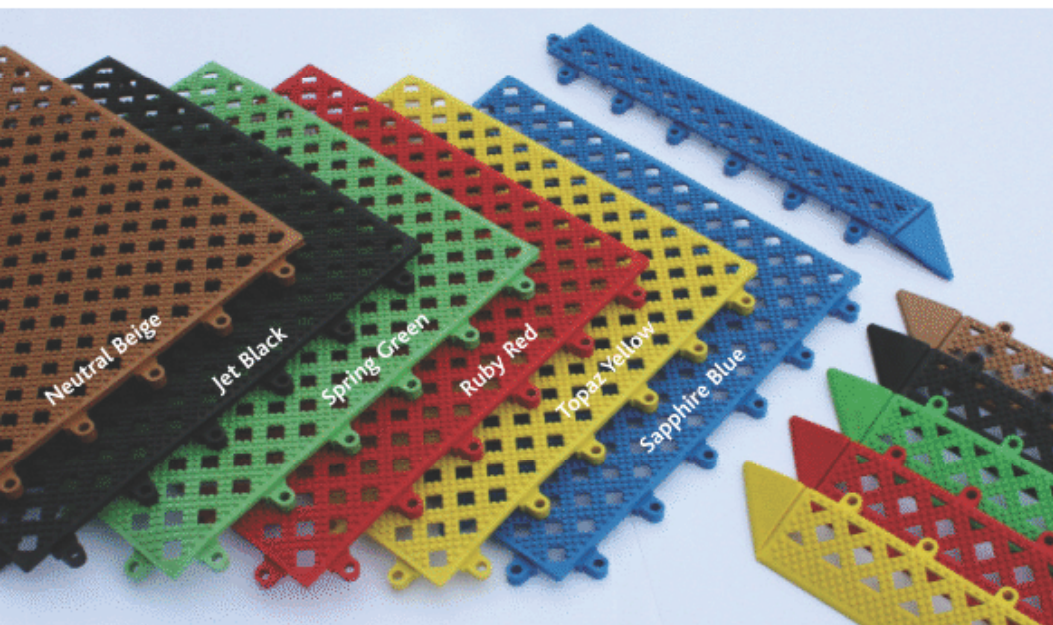
## Kumfi Tile PVC

- Versatile interlocking duckboard tile system with high grip surface suitable for indoor and outdoor dry or wet areas.
- Soft PVC construction provides anti-fatigue comfort but withstands most commercial and industrial applications including hospitals, hotels, exhibitions and light workshop use.
- Free-draining and resistant to a wide range of oils, grease and chemicals.
- Easy to clean - simply unclips into small sections.
- Overall height 12mm.

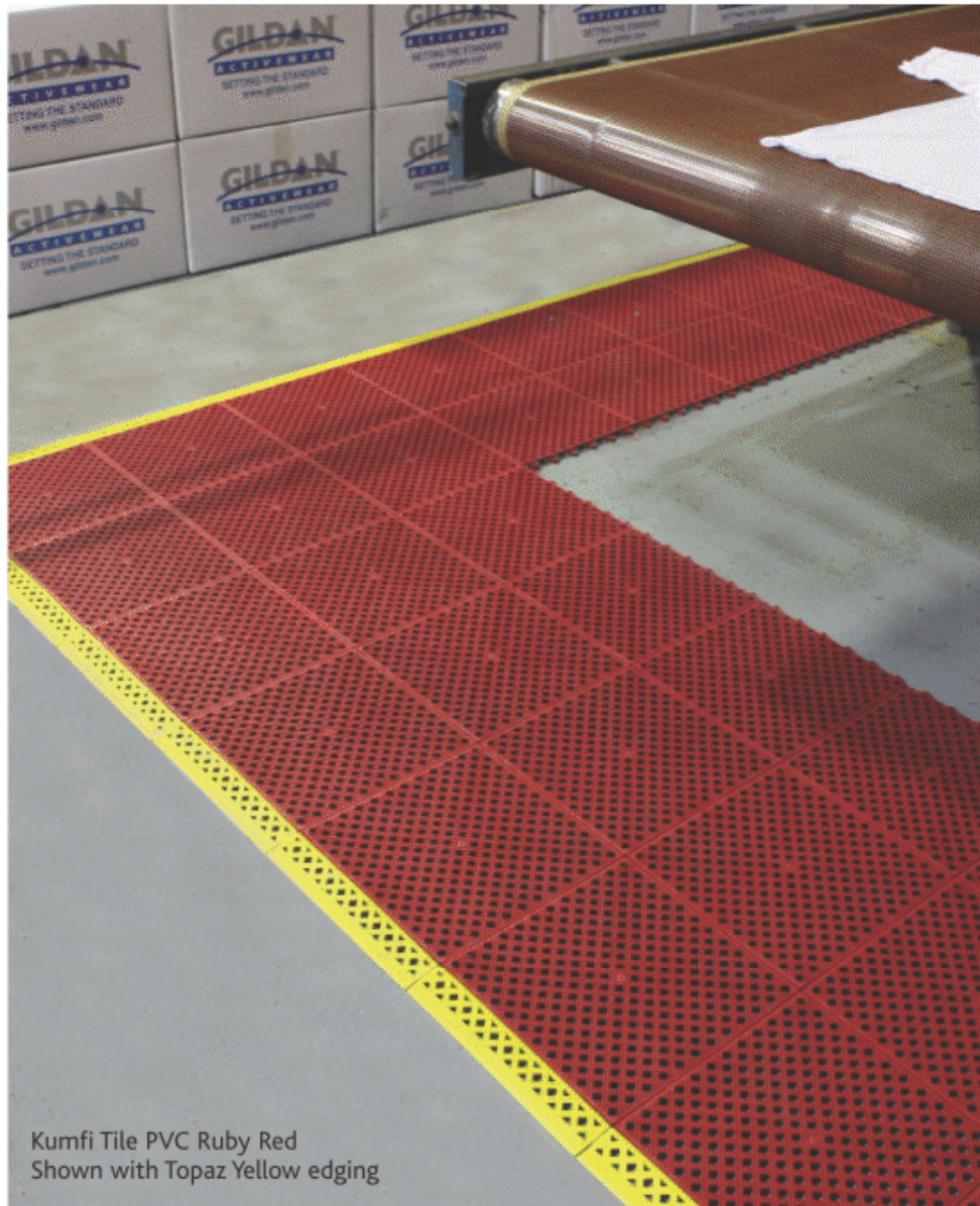
Code	Description	Metric	Imperial
KT1212	Tile	30cm x 30cm	12" x 12"
KT1202	Bevel Edge	30cm x 5cm	12" x 2"



Ideal for leisure applications See page 51



- Simple and effective interlocking system ensures a firm, quick joint which can be easily, but not accidentally released.
- Bevelled edge component moulded with corner section which can be simply removed with a sharp knife when not required.
- Can be laid to fit awkward shapes in any colour combination.
- System allows rapid extension or adaption of work areas and individual damaged tiles can be easily replaced.



Kumfi Tile PVC Ruby Red  
Shown with Topaz Yellow edging

## Kumfi Tile Polyethylene

- Interlocking duckboard system, similar to PVC version but more rigid and advantageously priced - ideal for covering large areas economically.
- Ideal for packing stations, walkways and light duty industrial applications.
- Compatible with PVC bevel system.
- Enhanced chemical resistance.

Code	Description	Metric	Imperial
KTP1212	Tile	30cm x 30cm	12" x 12"
KT1202	Bevel Edge	30cm x 5cm	12" x 2"



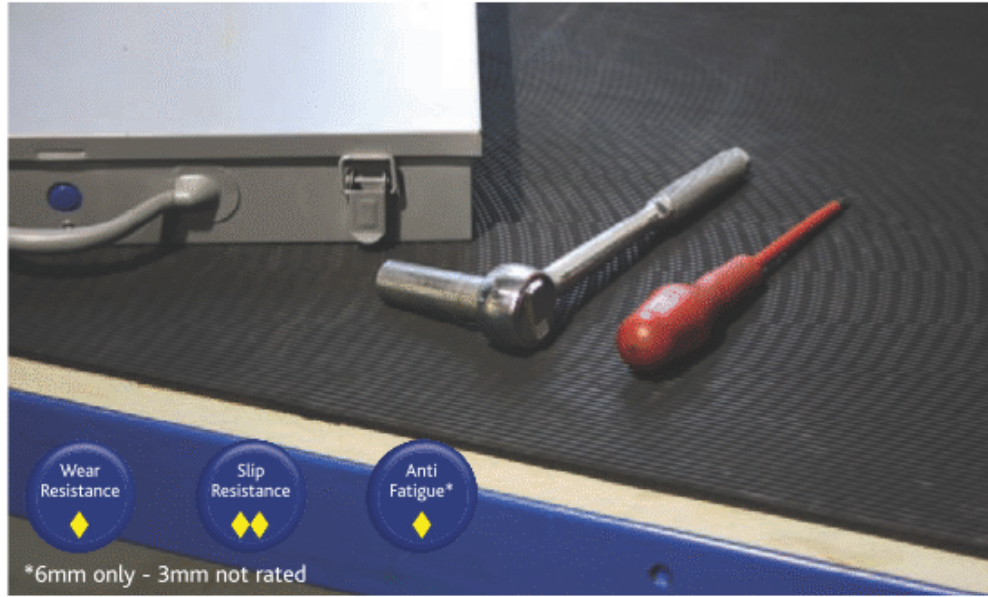
Polyethylene Tiles available in black only. Compatible with PVC bevel system.



## Rubber Rib Mat

- Low cost surface covering, suitable for industrial flooring, aisles, work benches and vehicle interiors.
- 100% rubber with fine ribbed surface for sure footing and easy cleaning.

	Code	Thickness	Size
Rolls	RR391	3mm	91cm x 10m
	RR3122	3mm	122cm x 10m
	RR691	6mm	91cm x 10m
	RR6122	6mm	122cm x 10m
Cut lengths	RR391C	3mm	91cm wide
	RR3122C	3mm	122cm wide
	RR691C	6mm	91cm wide
	RR6122C	6mm	122cm wide



## Plate Finish Rubber

- General purpose grade smooth rubber, ideal for waterproof seals and gaskets.
- 68 degrees shore A hardness.
- Tensile strength at break 3.0 Mpa
- Available in two thicknesses.

	Code	Thickness	Size
Rolls	PR3140	3mm	140cm x 10m
	PR6140	6mm	140cm x 10m
Cut lengths	PR3140C	3mm	140cm wide
	PR6140C	6mm	140cm wide

## Chequer Plate Runner

- Durable PVC flooring with rugged chequerplate pattern for non-directional anti-slip in industrial applications.
- Ideal for shelf liners, workbenches and near machines to prevent objects sliding.
- Overall height 4.7mm

	Code	Size	Imperial
Rolls	CR375	91cm x 22.8m	3' x 75'
	CR475	122cm x 22.8m	4' x 75'
Cut lengths	CR36	91cm wide	3' wide
	CR48	122cm wide	4' wide





## Rib Mat Electrical

- Non-conductive rubber safety matting designed to provide insulation and protect workers from electric shock.
- Slip resistant ribbed surface.

Available in two grades as listed below.

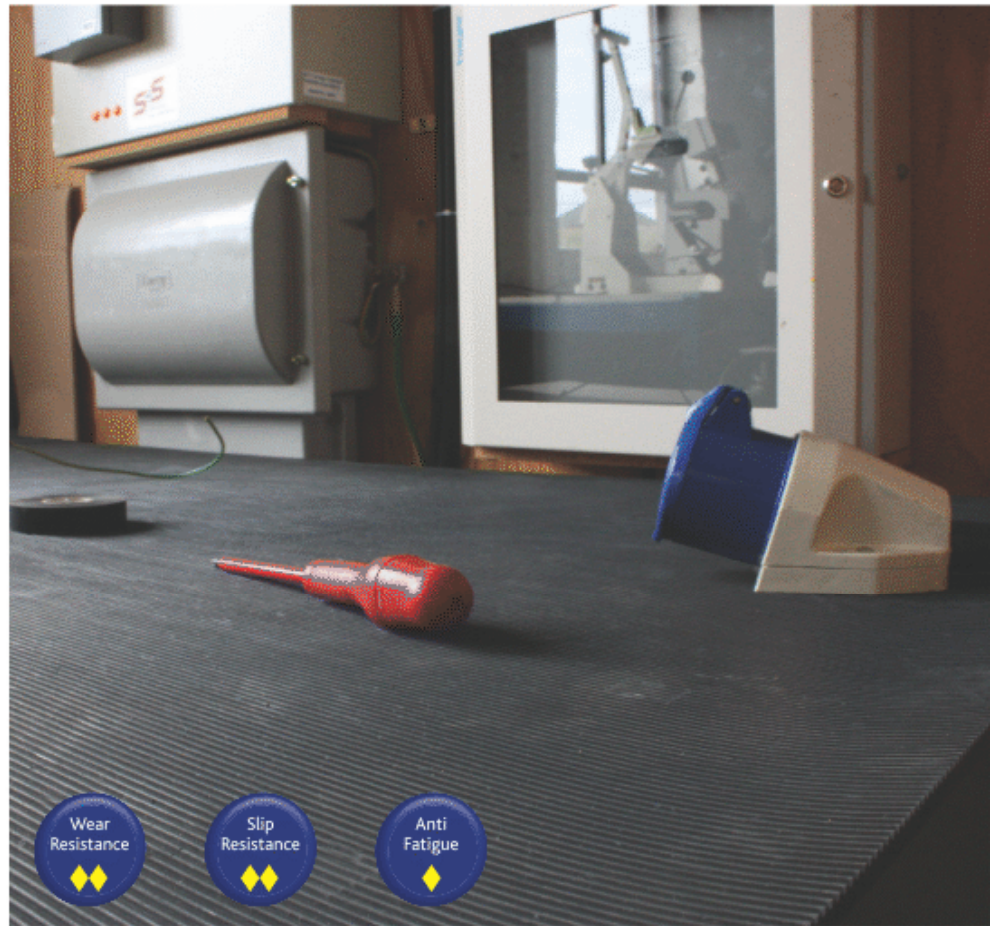
### 6mm Thick

Tested to 11,000 volts. Maximum working voltage 450 volts.

### 9mm Thick

Tested to BS921/1976. Tested to 15,000 volts. Maximum working voltage 650 volts.

Code	Thickness	Size
RE691	6mm	91cm x 11.5m
RE6122	6mm	122cm x 11.5m
RE991	9mm	91cm x 11.5m
RE9122	9mm	122cm x 11.5m
Cut lengths		
RE6911C	6mm	91cm wide
RE6122C	6mm	122cm wide
RE991C	9mm	91cm wide
RE9122C	9mm	122cm wide



## ASTM Switchboard Matting

- Non-conductive PVC compound, designed to provide insulation and protect workers from electric shock.
- Slip resistant ribbed surface.
- Each square inch of matting tested in conformance with ANSI/ASTM D-178 specifications.
- Class 2 - Dielectric Strength 30,000 volts.
- Proof test 20,000 volts.
- Recommended maximum usage 17,000 volts.
- Overall height 6.4mm

Code	Description	Size
SM3660	Mat	91cm x 150cm
SM375	Roll	91cm x 22.8m
SM36	Cut lengths	91cm wide







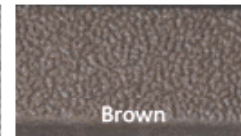
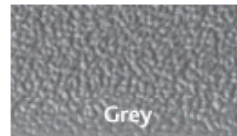
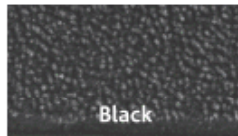
## Conductive Anti-static Matting

- ESD Kumfi Pebble and ESD Kumfi Tough are formulated to dissipate static electricity.
- Simple worker tasks - working, walking or even sitting on certain types of stools - creates static electric.
- Left unchecked, static can discharge into static sensitive equipment, potentially causing damage.
- Conductive/Anti-static matting drains static from workers, preventing unpleasant static shocks and safeguarding equipment.

## ESD Kumfi Pebble

- Anti-fatigue vinyl sponge matting designed to provide anti-static protection in light duty applications.
- Ideal for assembly lines, computer rooms, hospitals and photocopy areas.
- Meets IEC61340-4-1 (category DIF) measured resistance  $R_g 10^6-10^9\Omega$ ,  $R_p 10^6-10^9\Omega$ .
- Electrostatic charge (walking test) meets ISO6356 and EN1815.
- Overall height 9.4mm.

	Code	Metric	Imperial
Mats	EP2436	60cm x 91cm	2' x 3'
	EP3660	91cm x 150cm	3' x 5'
Rolls	EP360	91cm x 18.3m	3' x 60'
Cut lengths	EP36	91cm wide	3' wide



## ESD Kumfi Tough

- Static dissipative anti-fatigue mat for use in heavy duty industrial areas.
- Tough deck plate bevelled surface, laminated to sponge base for maximum durability and comfort.
- Integral socket and grounding cord.
- Meets IEC 61340-4-1 (category DIF) measured resistance  $R_g 10^6-10^9\Omega$ ,  $R_p 10^6-10^9\Omega$ .
- Electrostatic charge (walking test) meets ISO6356 and EN1815
- Overall height 14.3mm.

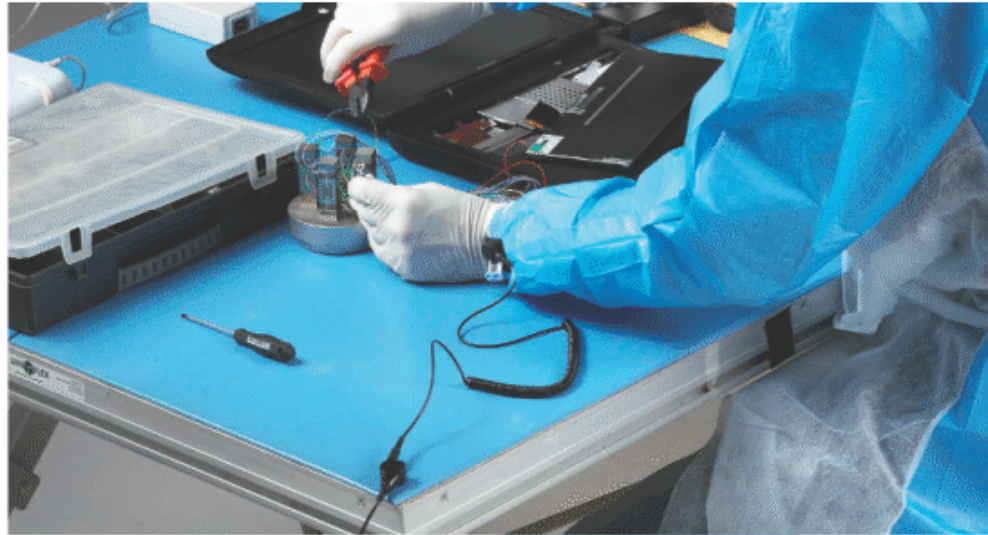
	Code	Metric	Imperial
Mats	EK2436	60cm x 91cm	2' x 3'
	EK3660	91cm x 150cm	3' x 5'
Rolls	EK375	91cm x 23m	3' x 75'
Cut lengths	EK36	91cm wide	3' wide



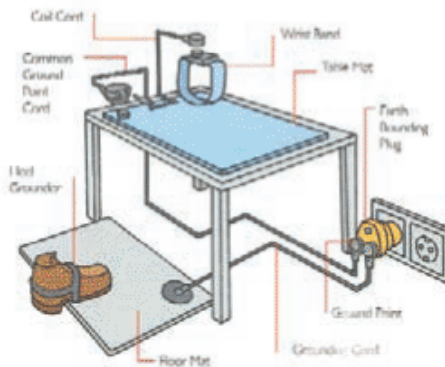


## ESD Worktop Matting

- Vinyl work surface mat designed to dissipate static from conductive items placed on it.
- Protects components from damaging static shock by bringing ESD protective materials and personnel to the same electrical potential.
- Use in conjunction with ESD accessories (see below).
- Meets EOS/ESD-S4, measured resistance for work surfaces  $R_g 10^7$  and  $R_p 10^9\Omega$ .
- Electrostatic charge (walking test), meets ISO6356 and EN1815.
- Overall height 6.4mm.



	Code	Size
Rolls	EW3040	76cm x 12.2m
	EW3640	91cm x 12.2m
Cut lengths	EW30	76cm wide
	EW36	91cm wide



Optional 10mm female socket for connection with recommended common grounding point cord.



FloorMat Grounding Cord with ring terminal - 4.5m	FloorMat Grounding Cord with female socket - 4.5m	Common Point Grounding Cord with ring terminal - 4.5m
Common Point Grounding Cord with female socket - 4.5m	Coil Cord - 1.8m	Wrist Band
Earth Bonding Plug	Heel Grounder	Mat Cleaner

## ESD Accessories

- Used in conjunction with ESD worktop matting and anti-static floor mats for safe dissipation of electrostatic charge.
- Specific grounding cords for connecting mats and common points to ground.
- Wrist band and heel grounder ensure effective worker connection.
- Earth bonding plug connects up to three cords to ground.
- Mat cleaner enhances static dissipation properties of mat.

Code	Description
EA0511	FloorMat Grounding Cord - Ring
EA0512	FloorMat Grounding Cord - Socket
EA0521	Common Grounding Point Cord - Ring
EA0522	Common Grounding Point Cord - Socket
EA0531	Coil Cord
EA0542	Wrist Cord
EA0551	Earth Bonding Plug
EA0561	Heel Grounder
EA0571	Mat Cleaner 950ml



## Diamond Grip

A comprehensive range of anti-slip surfacing products designed to promote floor level safety in the workplace. Suitable for light and heavy foot traffic and available in several different types as listed.

### General Purpose

- Self-adhesive anti-slip tape for general use around factories, stairs, ramps etc.
- Water, oil and chemical resistant.
- Available in rolls, tiles or stair tread cleats.

### Coarse

- Tough, diamond hard material for heavy duty use - ideal for heavy plant and construction equipment.
- Resistant to clogging.
- Available in rolls, tiles or stair tread cleats.

### Aquasafe

- For barefoot comfort and safety in wet areas.
- Textured vinyl top surface and moisture resistant backing.
- Available in rolls, tiles and stair tread cleats.

### General purpose, Coarse, Aquasafe

	Metric	Imperial
Rolls	25mm x 18.3m	1" x 60'
	50mm x 18.3m	2" x 60'
	100mm x 18.3m	4" x 60'
	150mm x 18.3m	6" x 60'
	305mm x 18.3m	12" x 60'
	610mm x 18.3m	24" x 60'
Tiles	140mm x 140mm (case of 50)	
Cleats	610mm x 150mm (each)	

Clear anti-slip tape is ideal for prestigious floor areas where appearance is important. NB Appearance is compromised when used with primer adhesive.

### Hazard

- General purpose grade anti-slip tape with hazard chevrons for added safety.
- Available in black/yellow or red/white.

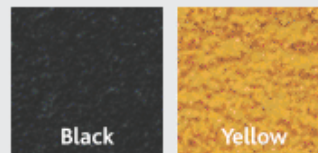
	Metric	Imperial
Rolls	50mm x 18.3m	2" x 60'

### Colour Range

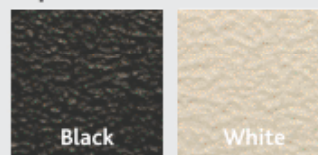
#### General Purpose



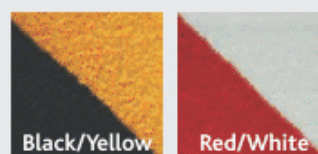
#### Coarse



#### Aqua Safe



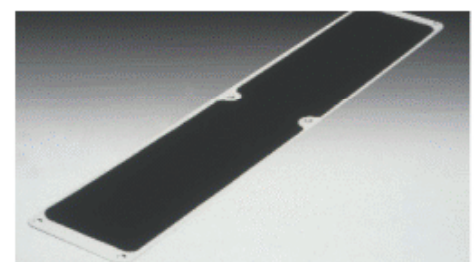
#### Hazard



## Aluminium Plates

- Provides anti-slip surfacing on potentially hazardous steps.
- Tough aluminium plate with general purpose anti-slip surface and countersunk screw holes.
- Ideal for industrial gangways and open mesh decking.
- Colour: Black with aluminium border.

Code	Metric	Imperial
DGAP25	114mm x 635mm	4 1/2" x 25"





## Conformable

- Suitable for irregular surfaces such as diamond tread plates.
- Foilbacking allows hammering into shape.
- Resistant to petrol and solvents.
- Wide range of uses in industry construction, aircraft etc.
- Colour: black only.

	Metric	Imperial
Rolls	25mm x 18.3m	1" x 60'
	50mm x 18.3m	2" x 60'
	100mm x 18.3m	4" x 60'
	150mm x 18.3m	6" x 60'
	305mm x 18.3m	12" x 60'
	610mm x 18.3m	24" x 60'
Tiles	140mm x 140mm (case of 50)	
Cleats	610mm x 150mm (each)	



## Diamond Grip Accessories

### Primer/Adhesive

Recommended for areas exposed to water, grease or oil. Especially suitable for low temperatures and exterior applications. Coverage approx 4 square metres per litre.

### Edge Sealer

Handy tubes for beading or sealing edges of Diamond Grip to avoid seepage of excessive water, grease or petrol. Also protects edges in high traffic areas. Coverage 30 linear metres.

Code	Metric	Size
DGPA1000	Primer/Adhesive	1 litre tin
DGES150	Edge Sealing Compound	150ml tube
DGS1000	Solvent	1 litre tin



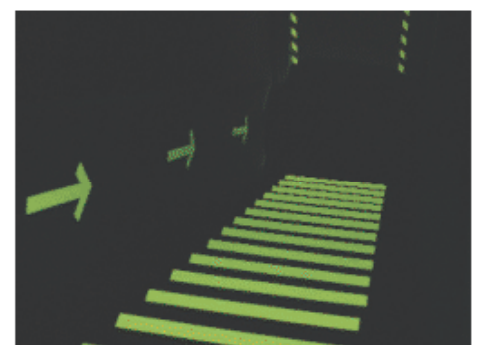
### Solvent

Cleaner/degreaser for metal surfaces before application of Diamond Grip. Also for cleaning up of primer/adhesive, edge sealing compound and any tools used during applications.

## Glow in the Dark

- Photoluminescent anti-slip tape ideal for emergency exit routes.
- Suitable for indoor or outdoor use.
- Available with or without black chevrons.

Code	Metric	Imperial
DGPL02	50mm x 18.3m	2" x 60'

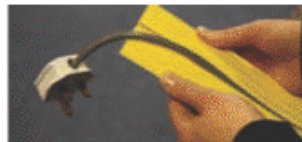
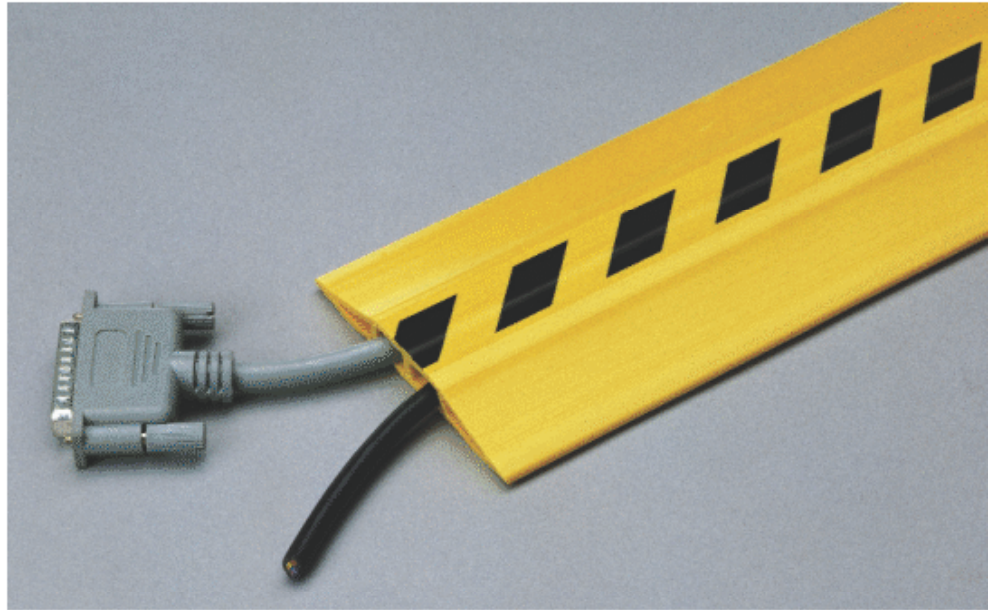




## PVC Cable Protector

- A simple, inexpensive solution to the trip hazard of trailing leads.
- Quick installation with no need to disconnect wires.
- Self adhesive backing adheres to carpets or hard floors.
- Ideal for foot traffic in offices, computer rooms and laboratories.
- Helps to comply with safety regulations.

Code	Colour	Metric	Imperial
CP375B	Black	75mm x 3m	3" x 10'
CP375G	Grey	75mm x 3m	3" x 10'
CP375Y	Yellow	75mm x 3m	3" x 10'
CP375BY	Black/Yellow	75mm x 3m	3" x 10'
CP310B	Black	100mm x 3m	4" x 10'
CP310G	Grey	100mm x 3m	4" x 10'
CP310Y	Yellow	100mm x 3m	4" x 10'
CP310BY	Black/Yellow	100mm x 3m	4" x 10'



## Cable Mat

- Loose-lay trip prevention mat, designed to minimise the risks of trailing leads in office environments.
- Anti-slip nitrile rubber backing suitable for most floor types.
- Recessed backing for containment of cables and wires.
- Machine washable and rapidly relocatable.

Code	Metric	Imperial
CM1647	40cm x 120cm	16" x 47"

## Safety Message Mats

- Designed to continually reinforce important safety factors in the workplace.
- Vibrant images printed onto nylon with vinyl backing and edging.
- Other designs available to order - see pages 10 and 11.
- Overall height 4mm.

Code	Message	Size
SM954	Watch Your Step	90cm x 150cm
SM955	No Smoking	90cm x 150cm
SM956	Stop/Think Safety	90cm x 150cm
SM957	Safety Starts Here	90cm x 150cm





## Knee Saver

- Convenient portable kneeling pad, ideal for on-site maintenance.
- Manufactured from closed cell foam with built-in carrier handle.
- Reduces knee and back pain caused by regular kneeling.
- Weighs only 350g.
- Overall height 25mm.

Code	Metric	Imperial
KS1222	31cm x 55cm	12" x 22"



## Antivibe Sheeting

- Cork rubber sheeting for internal and external anti-vibration applications.
- Suitable for use in very low or high temperatures.
- High load bearing capacity and excellent resistance to chemicals, fluids and gases.
- Numerous applications in civil engineering and aeronautical industries.
- Available in four thicknesses as listed.

Code	Size	Thickness
AV10	100cm x 100cm	10mm
AV13	100cm x 100cm	13mm
AV20	100cm x 100cm	20mm
AV25	100cm x 100cm	25mm

## Dynamat (see also page 53)

- Virtually indestructible rubber mat for protecting floors and general shock absorption applications.
- Textured top surface provides traction.
- Ideal for glass industry applications and storage of heavy industrial equipment.
- Available in two thicknesses as listed.

Code	Size	Thickness
DM10	120cm x 180cm	10mm
DM17	120cm x 180cm	17mm

