



Powered by **integreater**



Dashboards

Using Real-Time Data to inform better decisions and collaboration

Integreater's data-driven dashboard tool provides real-time visibility to monitor and understand process-specific performance. Its flexible design means that it can be configured to measure whatever data is most important to each department, including 'drill down' functions that provide detailed analysis. With dashboards, your production data will be presented in meaningful and visual formats and will blend data from many sources to provide a complete view.

“For the food processing industry, using data effectively is all about how you can make production process changes that have a positive outcome on margins,” explained Rob Stephens, SI's CEO. “With SI's dashboards in place, businesses can make real-time decisions on a whole range of variables, increasing production and yield, whilst reducing giveaway.”

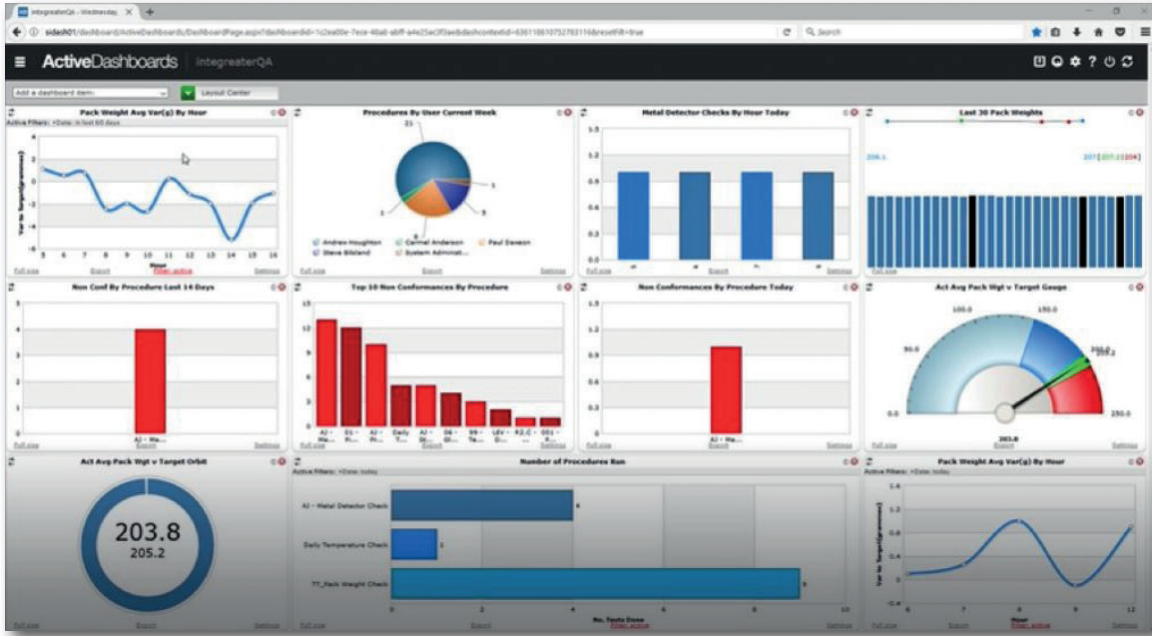
“At every point in food production process, data can be captured from manual inputs to handheld devices and connected equipment. By seeing live data in a simple dashboard style feed on the production line, in the office or both, KPIs can be monitored and timely decisions can be made to react to trends.”

“Our colleagues in production are now able to interpret the data on the shop floor, that's presented to them in real-time, and actually make a difference to the process and the bottom line.”
David McCarthy, Production Systems Manager, Faccenda Foods.

“Our shop-floor dashboards provides Production with exactly the information they need to control the process in real-time, rather than looking back at retrospective reporting.”

David McCarthy, Production Systems Manager, Faccenda Foods.

Real-time data insight to drive decision making



Through SI's tailored dashboard data, real-time decisions can be made to improve production. Presented through a combination of charts, gauges, maps and grids, real-time data will help you make business decisions. For example:

- Know when to adjust equipment to improve throughput
- Implement manual processes to reduce product giveaway
- Open new lines to increase throughput. This is particularly important when processing products that are same day delivery, where forecasting sets out the day, but item numbers are only confirmed after shifts have begun.

“Fulfilling orders really is the golden rule in food processing, particularly when you are dealing with large customers. With dashboards in place, particularly on the shop floor, production managers can make decisions about changing or opening lines at the touch of a button.

At SI, we've seen that it's this learning and the advance capabilities of automated software that is now playing a key role in the transition from end of day or shift reporting, to real-time data driven action, through the use of live dashboards.

“With SI's dashboards in place, businesses can make real-time decisions on a whole range of variables, increasing production and yield, whilst reducing giveaway.”

Rob Stephens, CEO, SI

Lincoln House, Wellington Crescent, Fradley Park, Lichfield, Staffordshire, WS13 8RZ

T: +44 (0)1543 444 555 F: +44 (0)1543 444 333 E: Info@sifoodsoftware.com

sifoodsoftware.com/cheese



Systems Integration (Trading) Ltd