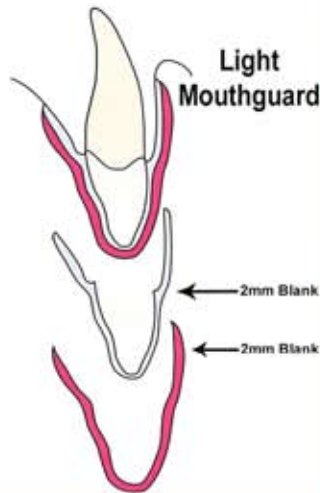


Mouthguard Types

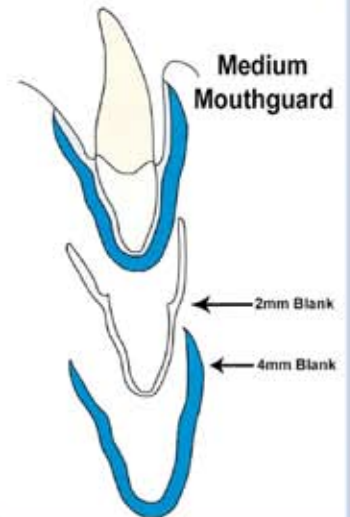
Light

Dual Layer
for Deciduous
teeth



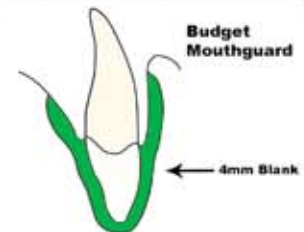
Medium

Dual Layer for
football,
rugby, moun-
tain biking



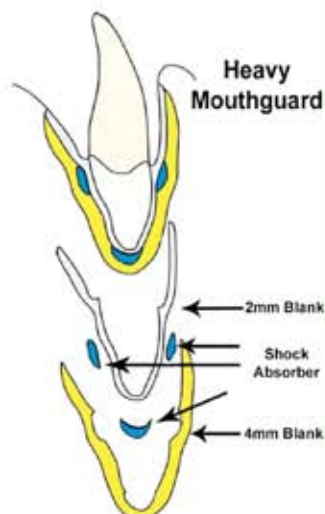
Budget

A Single Layered non laminated mouthguard
offering basic protection for those on a budget.



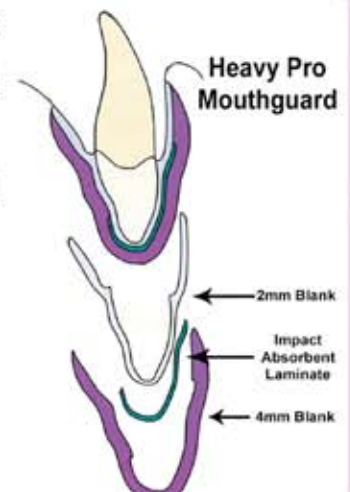
Heavy

Dual Layer
plus shock
absorbent
material
for squash,
hockey.



Heavy Pro

Dual Layer plus
impact resistant
laminate for
martial arts and
boxing



Castle Ceramics Dental Laboratory, Tel:-01827 302501

2 Cavendish, Mariner, Lichfield Road Industrial Estate, Tamworth, Staffordshire.B79 7XH

web: www.castle-ceramics.com e-mail: castleceramics@btconnect.com

