



IN 2017

Breeding cattle will change forever with

Sexed **ULTRA 4M**™



2017 SIRE DIRECTORY

facilitated by  01606 869253



Livestock genetics innovator STgenetics™ has rolled out a new flagship A.I. product that packs twice the number of sex-sorted sperm cells per straw as its previous products, leading to conception rates that are very close to those achieved using conventional semen.



High fertility SexedULTRA 4M™ sex sorted semen boasts 4 million cells per straw. Previous SexedULTRA™ semen straws contained 2.1 million cells per straw. During a field trial in Germany conducted by STgenetics in collaboration with German Genetics International, SexedULTRA 4M™ delivered conception rates comparable to conventional semen packaged at a concentration of 15 million cells per straw over 7,500 inseminations.

The increased conception rate of SexedULTRA 4M™ is due to improvements in sperm biotechnology, the media that nourishes and invigorates the sperm during the sorting process, and improved sorting machine technology

SexedULTRA 4M™ high fertility sex-sorted semen even more effective when combined with genomic testing to ensure that producers get the most out of their mating plans. Genomic testing through a company like Genetic Visions-ST in Middleton, WI, allows producers to identify their highest genomic value animals and to evaluate in-depth their entire herds.

Creating a breeding plan around genomic testing and SexedULTRA 4M™ high fertility semen ensures that the best females in the herd deliver replacement heifers. SexedULTRA 4M™ high fertility sex sorted semen is available on most of STgenetics' elite dairy sires.

SexedULTRA 4M™



Managing Director

Alan Barrow

Mobile 07812 663167

Email alan@thecalfcompany.com

Sales & Accounts

Diane Tipping

Office 01606 869253

Mobile 07710 268546

Email diane@thecalfcompany.com

TAG UK sales manager

Ian Venables

Mobile: 07841 439 104

Email: ian@thecalfcompany.com

Field Manager

Matthew Noble

Mobile 07746 295291

Email matthew@thecalfcompany.com

Welcome to TAG-UK

We are the UK franchise of TAG-by-ST, who are Specialists in genetics for the Dairy market. Based in North America they focus on identifying and marketing of elite dairy Genetic to international markets. Since its beginning TAG-by-St differentiated itself through exceptional quality and product offerings and has rapidly grown to over 40 markets.

TAG (trans american genetics) have been marketing top quality genetics around the world for a number of years, and now British dairy farmers have the opportunity to benefit from TAG's stud and breeding program, the TAG product offers high quality semen, TAG put higher than industry standard quantities of semen in each straw and have a higher percentage of live semen after thawing than many studs.

At TAG-UK we have selected bulls and products that we feel will help British dairy farmer improve their herds and help improve profits, be that from the sires transmitting abilities, the high fertility of the semen, or the revolutionary Sexedultra.

Please read through the pages of our website to see why we are so proud to be TAG-UK and find out more about our great bulls and products.

www.Tag-uk.com

OUT OF HOURS 24/7

CONTACT TEL - 07812 663167

The Calf Company (Europe) Ltd.
Lime House, 2 Road Two, Winsford, Cheshire, CW7 3QZ

£ PLI	
B52	£693
Controller	£679
Ransom	£538
Missouri	£478
Kobra	£439

Milk kg	
Sargeant	1180
Missouri	906
Mega-star	822
Millennium	820
1st Grade	754

Type Merit	
1st Grade	3.34
Jordy Red	2.89
Dagon	2.82
Imac	2.79
Millennium	2.54

Fat kg	
B52	35.8
Mega-Star	32.6
Action	30.6
Controller	30.6
Taz	29.5

Fat %	
B52	0.25
Ransom	0.12
Controller	0.12
Cadillac	0.03
Jordy Red	0.03
Kobra	0.03

Fertility Index	
Controller	11.9
Ransom	10.9
B52	8.5
Taz	7.4
Cadillac	6.5

Protein kg	
Sargeant	26.1
Controller	23.9
Mega-Star	23.6
Missouri	24.4
Taz	22.7

Protein %	
Ransom	0.08
Controller	0.08
Kobra	0.04
B52	0.01
Mega-Star	-0.01

Lifespan	
Controller	0.6
Ransom	0.6
Taz	0.6
Cadillac	0.5
B52	0.5

Mammary	
1st Grade	3.46
Imac	2.95
Jordy Red	2.5
Comingo	2.49
Cadillac	2.46

Calving Ease	
Ransom	0.9
Kobra	0.7
Taz	0.6
Controller	0.3
Mega-Star	0.1
Mega Star	0.2

Legs & Feet	
Jordy Red	2.39
Dagon	2.38
Taz	2.08
Action	2.06
B52	1.92

More sires can be found on our website www.tag-uk.com

Production Proof:

Milk (kg)	744
Fat (kg)	30.6
Fat %	0.1
Protein (kg)	22.3
Protein %	-0.08
Beta Casein	A2A2
PLI	£n/a
Source: ADHB Dairy	
GTPi	+2634

Health Info:

Somatic Cell C	-18	(69% rel)
Lifespan	0.4	(60% rel)
Fertility	3.1	(61% rel)
D.Calving Ease	-0.2	(64% rel)
M.Calving Ease	1.1	(53% rel)

**SIRE ANALYSIS:**

Seagull-Bay Action will produce stylish daughters that will produce volumes of milk. Daughters will carry themselves on a frame (2.46TM) that supports top quality udder traits. Action will be a stylish bull that proves himself in the parlour.

SOURCE: INTERBULL GMACE HOLSTEIN UK

TYPE PROOFS		-3	-2	-1	1	2	3	
Type Merit	2.46	Poor						Excellent
Mammary	2.11	Poor						Excellent
Legs & Feet	2.06	Poor						Excellent
Stature	1.45	Short						Tall
Chest Width	1.0	Narrow						Wide
Body Depth	0.57	Shallow						Deep
Angularity	0.52	Thick						Angular
Rump Angle	0.29	High Pins						Sloped
Rump Width	1.39	Narrow						Wide
Rear Leg Side	-1.02	Straight						Sickled
Foot Angle	0.93	Low						Steep
Fore Udd Att	1.65	Loose						Tight
Rear Udd Hgt	1.96	Very Low						Very High
Udd Support	1.13	Broken						Strong
Udd Depth	1.27	Below						20cm Above
Front Teat Pl	0.97	Outside						Close
Teat Length	-0.17	Short						Long
Rear Teat Pl	0.71	Apart						Close
Ease of Milk	0.22	Slow						Fast
Locomotion	1.91	Poor						Excellent
Condition Score	0.53	Low						High



Seagull Bay Action

Production Proof:		
Milk (kg)		716
Fat (kg)		26.3
Fat %		-0.02
Protein (kg)		18.3
Protein %		-0.12
Beta Casein		A1A2
PLI		n/a
Source: ADHB dairy		
GTPI		+2444

Health Info:		
Somatic Cell C	1	(77% rel)
Lifespan	0.4	(66% rel)
Fertility	4.8	(68% rel)
D.Calving Ease	n/a	
M.Calving Ease	1.0	(57% rel)



SIRE ANALYSIS:

Grandam-Benner Planet Bessie VG85 Barclay will sire daughters of average size with power and strength with great udders. He will give you quantity of milk with good Fertility and has no Goldwyn or Shottle in his sire stack.

SOURCE: INTERBULL GMACE HOLSTEIN UK

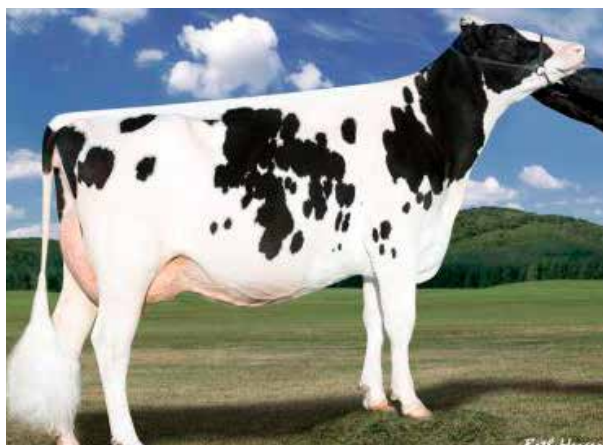
TYPE PROOFS	-3	-2	-1	1	2	3	
Type Merit	2.42	Poor		██████████			Excellent
Mammary	2.32	Poor		██████████			Excellent
Legs & Feet	1.73	Poor		██████████			Excellent
Stature	0.77	Short		██████████			Tall
Chest Width	0.47	Narrow		██████████			Wide
Body Depth	0.59	Shallow		██████████			Deep
Angularity	1.45	Thick		██████████			Angular
Rump Angle	0.68	High Pins		██████████			Sloped
Rump Width	0.5	Narrow		██████████			Wide
Rear Leg Side	-0.69	Straight	██████████				Sickled
Foot Angle	1.36	Low		██████████			Steep
Fore Udd Att	1.84	Loose		██████████			Tight
Rear Udd Att	2.64	Very Low		██████████			Very High
Udd Support	1.33	Broken		██████████			Strong
Udd Depth	1.01	Below		██████████			20cm Above
Front Teat Pl	2.11	Outside		██████████			Close
Teat Length	-1.37	Short	██████████				Long
Rear Teat Pl	1.41	Apart		██████████			Close
Temperment	1.05	Apart		██████████			Close
Ease of Milk	1.47	Apart		██████████			Close
Locomotion	1.87	Apart		██████████			Close
Condition SC	-0.58	Apart	██████████				Close



G.Grandam-Mapel Wood Baxter Bethany VG85

Production Proof:		
Milk	(kg)	395
Fat	(kg)	35.8
Fat %		0.25
Protein	(kg)	21.4
Protein %		0.1
Beta Casein		A2A2
PLI		£693
Source:	Holstein UK	
GTP1		+2713

Health Info:		
Somatic Cell C	-21	(68 % rel)
Lifespan	0.5	(58 % rel)
Fertility	8.5	(61 % rel)
D.Calving Ease	-0.8	(63 % rel)
M.Calving Ease	1.6	(53 % rel)



SIRE ANALYSIS:

B52 has an impressive genomic proof with outstanding fats and protein components with the added advantage of being an A2A2 bull. His health traits are advantageous too producing long lasting daughters together with a nicely rounded linear.

SOURCE: INTERBULL GMACE HOLSTEIN UK

TYPE PROOFS			-3	-2	-1	1	2	3	
Type Merit	2.11	Poor							Excellent
Mammary	1.92	Poor							Excellent
Legs & Feet	1.54	Poor							Excellent
Stature	0.85	Short							Tall
Chest Width	0.1	Narrow							Wide
Body Depth	-0.23	Shallow							Deep
Angularity	1.22	Thick							Angular
Rump Angle	0.19	High Pins							Sloped
Rump Width	1.2	Narrow							Wide
Rear Leg Side	-0.6	Straight							Sickled
Foot Angle	1.1	Low							Steep
Fore Udd Att	1.58	Loose							Tight
Rear Udd Hgt	2.05	Very Low							Very High
Udd Support	0.86	Broken							Strong
Udd Depth	1.25	Below							20cm Above
Front Teat Pl	1.29	Outside							Close
Teat Length	-0.99	Short							Long
Rear Teat Pl	1.13	Apart							Close
Teat Pos	0.62	Close							Apart
Temperament	1.03	Poor							Good
Ease of Milk	1.17	Slow							Fast
Locomotion	1.62	Poor							Excellent
Condition Score	-0.72	Low							High



B52 Bull

Production Proof:		
Milk	(kg)	484
Fat	(kg)	21.2
Fat %		0.03
Protein	(kg)	14.7
Protein %		-0.05
Beta Casein		A1A2
PLI		£ n/a
Source:	ADHB Dairy	
GTPi		+2540

Health Info:		
Somatic Cell c		-18 (73% rel)
Lifespan		0.5 (58% rel)
Fertility		6.5 (53% rel)
D.Calving Ease		-0.6 (52% rel)
M.Calving Ease		1.8 (33% rel)



SIRE ANALYSIS:

Dam-Rokymountain Uno Cheyanne VG85 Cadillac offers an exciting pedigree. He will deliver on fat components and daughters will look after themselves with his health traits. His teat length (+1.12) will be a desirable trait.

SOURCE: INTERBULL GMACE HOLSTEIN UK

TYPE PROOFS			-3	-2	-1	1	2	3	
Type Merit	2.49	Poor				█	█		Excellent
Mammary	2.46	Poor				█	█		Excellent
Legs & Feet	1.35	Poor				█	█		Excellent
Stature	1.85	Short				█	█		Tall
Chest Width	0.74	Narrow				█	█		Wide
Body Depth	0.46	Shallow				█	█		Deep
Angularity	0.62	Thick				█	█		Angular
Rump Angle	-0.69	High Pins			█				Sloped
Rump Width	2.42	Narrow				█	█		Wide
Rear Leg Side	-0.79	Straight			█				Sickled
Foot Angle	0.75	Low				█	█		Steep
Fore Udd Att	2.13	Loose				█	█		Tight
Rear Udd Att	2.38	Very Low				█	█		Very High
Udd Support	1.11	Broken				█	█		Strong
Udd Depth	2.4	Below				█	█		20cm Above
Front Teat Pl	0.53	Outside				█	█		Close
Teat Length	1.12	Short				█	█		Long
Rear Teat Pl	0.08	Apart							Close
Ease of Milk	0.23	Slow				█	█		Fast
Locomotion	1.14	Poor				█	█		Excellent
Condition Score	0.02	Low							High



MGGDam Larcrest Cosmopolitan VG87

EDG UNO COMINGO 8170 ET HCD0 HH3C

(UNO X VG SNOWMAN X EX92 SHOTTLE)



Production Proof:		
Milk	(kg)	515
Fat	(kg)	21.7
Fat %		0.02
Protein	(kg)	16
Protein %		-0.05
Beta Casein		A1A1
PLI		n/a
Source: ADHB Dairy		
GTPI		+2352

Health Info:		
Somatic Cell c	-19	(78% rel)
Lifespan	0.4	(67%rel)
Fertility	5.1	(68% rel)
D.Calving Ease	n/a	
M.Calving Ease	0.7	(58% rel)



SIRE ANALYSIS:

Comingo is a Uno son off a Snowman cow from the Chassity family. He will bring power and strength with fertility with good udders and milk quality. He is also an outcross to Mogul and Goldwyn bloodlines.

SOURCE: INTERBULL GMACE HOLSTEIN UK

TYPE PROOFS		-3	-2	-1	1	2	3	
Type Merit	2.4	Poor						Excellent
Mammary	2.49	Poor						Excellent
Legs & Feet	0.91	Poor						Excellent
Stature	2.0	Short						Tall
Chest Width	0.17	Narrow						Wide
Body Depth	0.15	Shallow						Deep
Angularity	0.95	Thick						Angular
Rump Angle	0.58	High Pins						Sloped
Rump Width	1.02	Narrow						Wide
Rear Leg Side	-0.96	Straight						Sickled
Foot Angle	1.17	Low						Steep
Fore Udd Att	2.0	Loose						Tight
Rear Udd Att	2.83	Very Low						Very High
Udd Support	1.54	Broken						Strong
Udd Depth	1.6	Below						20cm Above
Front Teat Pl	1.51	Outside						Close
Teat Length	-0.1	Short						Long
Rear Teat Pl	1.07	Apart						Close
Temperament	1.04	Poor						Good
Ease of Milk	0.02	Slow						Fast



G.Dam Regancrest S.Chassity EX92

Production Proof:		
Milk	(kg)	520
Fat	(kg)	30.6
Fat %		0.12
Protein	(kg)	23.9
Protein %		0.08
Beta Casein		A1A2
PLI		£679
Source:	Holstein UK	
GTPI		+2671

Health Info:		
Somatic Cell c	-18	(69 % rel)
Lifespan	0.6	(59 % rel)
Fertility	11.9	(62 %rel)
D.Calving Ease	0.3	(63 %rel)
M.Calving Ease	2	(53 %rel)



SIRE ANALYSIS:

As a Director son, Controller has an impressive fertility index Director is sure to make robust non extreme daughters that will have longevity and will deliver plenty of high quality milk.

SOURCE: INTERBULL GMACE HOLSTEIN UK

TYPE PROOFS		-3	-2	-1	1	2	3	
Type Merit	1.57 Poor				█			Excellent
Mammary	1.42 Poor				█			Excellent
Legs & Feet	1.07 Poor				█			Excellent
Stature	0.99 Short				█			Tall
Chest Width	1.21 Narrow				█			Wide
Body Depth	0.34 Shallow				█			Deep
Angularity	-0.05 Thick				█			Angular
Rump Angle	-0.67 High Pins			█				Sloped
Rump Width	1.05 Narrow				█			Wide
Rear Leg Side	0.45 Straight				█			Sickled
Foot Angle	0.21 Low				█			Steep
Fore Udd Att	1.25 Loose				█			Tight
Rear Udd Hgt	1.1 Very Low				█			Very High
Udd Support	0.75 Broken				█			Strong
Udd Depth	1.23 Below				█			20cm Above
Front Teat Pl	0.87 Outside				█			Close
Teat Length	-1.83 Short		█					Long
Rear Teat Pl	0.53 Apart				█			Close
Teat Pos	0.36 Close				█			Apart
Temperament	1.4 Poor				█			Good
Ease of Milk	1.12 Slow				█			Fast
Locomotion	1.2 Poor				█			Excellent
Condition Score	0.89 Low		█					High

MR ALPHAGEN DAGON

(MOGUL X VG89 DOMAIN X VG88 GOLDWYN)



GENOMIC

Production Proof:		
Milk	(kg)	307
Fat	(kg)	13
Fat %		0.01
Protein	(kg)	9.1
Protein %		-0.01
Beta Casein		A2A2
PLI		£330
Source:	Holstein UK	
GTPI		+2299

Health Info:		
Somatic Cell c		-1 (70% rel)
Lifespan		0.4 (61% rel)
Fertility		5.6 (64% rel)
D.Calving Ease		-0.3 (78% rel)
M.Calving Ease		0.9 (56% rel)



SIRE ANALYSIS:

This Mogul son has a sire stack of Domain and Goldwyn behind him and has great type, chest width and has great legs and feet and a great udder improver.

Dagon is a bull with no holes in him and is being used by both pedigree and commercial breeders.

SOURCE: INTERBULL GMACE HOLSTEIN UK

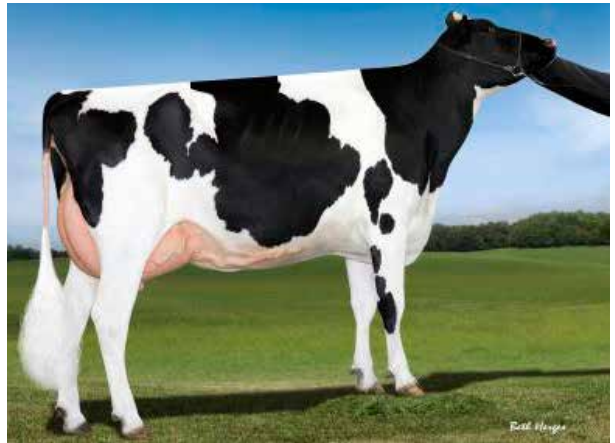
TYPE PROOFS			-3	-2	-1	1	2	3	
Type Merit	2.82	Poor							Excellent
Mammary	2.4	Poor							Excellent
Legs & Feet	2.38	Poor							Excellent
Stature	1.02	Short							Tall
Chest Width	0.56	Narrow							Wide
Body Depth	0.16	Shallow							Deep
Angularity	-0.02	Thick							Angular
Rump Angle	1.17	High Pins							Sloped
Rump Width	0.79	Narrow							Wide
Rear Leg Side	-0.98	Straight							Sickled
Foot Angle	0.82	Low							Steep
Fore Udd Att	2.32	Loose							Tight
Rear Udd Att	2.03	Very Low							Very High
Udd Support	1.44	Broken							Strong
Udd Depth	2.41	Below							20cm Above
Front Teat Pl	1.44	Outside							Close
Teat Length	-0.91	Short							Long
Rear Teat Pl	0.99	Apart							Close
Teat Pos	0.83	Close							Apart
Temperament	-0.5	Poor							Good
Ease of Milk	0.87	Slow							Fast
Locomotion	2.43	Poor							Excellent
Condition Score	0.64	Low							High



Dam-Regan Alh Domain Daya VG89

Production Proof:		
Milk	(kg)	517
Fat	(kg)	14.4
Fat %		-0.07
Protein	(kg)	12.6
Protein %		-0.09
Beta Casein		A2A2
PLI		n/a
Source: ADHB Dairy		
GTPI		+2300

Health Info:		
Somatic Cell c	-10	(69%rel)
Lifespan	0.3	(59% rel)
Fertility	2.8	(54% rel)
D.Calving Ease	-0.5	(51% rel)
M.Calving Ease	1.4	(34% rel)



SIRE ANALYSIS:

Dam- Farnear Dacie Danica VG85 Imac is an impressive bull while being a red carrier. Udders will be deep and well attached. He is not an extreme bull, he would work well on small wide cows, giving them the stature in keeping with a deep bodied show type cow.

SOURCE: INTERBULL GMACE HOLSTEIN UK

TYPE PROOFS		-3	-2	-1	1	2	3	
Type Merit	2.79	Poor						Excellent
Mammary	2.95	Poor						Excellent
Legs & Feet	1.24	Poor						Excellent
Stature	2.68	Short						Tall
Chest Width	0.46	Narrow						Wide
Body Depth	1.48	Shallow						Deep
Angularity	0.96	Thick						Angular
Rump Angle	-0.57	High Pins						Sloped
Rump Width	1.61	Narrow						Wide
Rear Leg Side	-0.44	Straight						Sickled
Foot Angle	1.17	Low						Steep
Fore Udd Att	3.02	Loose						Tight
Rear Udd Att	3.03	Very Low						Very High
Udd Support	2.04	Broken						Strong
Udd Depth	2.41	Below						20cm Above
Front Teat Pl	1.84	Outside						Close
Teat Length	-0.31	Short						Long
Rear Teat Pl	1.68	Apart						Close
Ease of Milk	1.56	Slow						Fast
Locomotion	1.02	Poor						Excellent
Condition Score	-0.11	Low						High



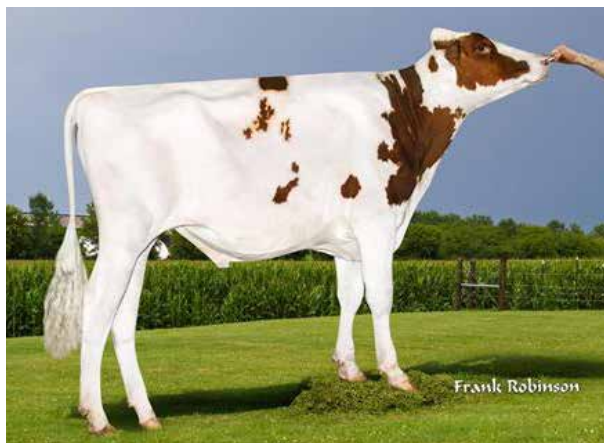
Farnear Apples Imac

CYCLE M^CGUCCI JORDY RED RC

(MCGUCCI X GOLD CHIP X LION KING RC)

Production Proof:		
Milk	(kg)	198
Fat	(kg)	9.9
Fat %		0.03
Protein	(kg)	5.2
Protein %		-0.03
Beta Casein		A1A2
PLI		£ n/a
Source: ADHB Dairy		
GTPI		+2009

Health Info:		
Somatic Cell c	-6	(66 % rel)
Lifespan	0.2	(56 % rel)
Fertility	-3.6	(53% rel)
D.Calving Ease	-1.2	(48 % rel)
M.Calving Ease	0.7	(31% rel)



SIRE ANALYSIS:

Type sensation- Jordy Red should breed tall and stylish calves and with great dairy strength, chest width, and quality of bones.

SOURCE: INTERBULL GMACE HOLSTEIN UK

TYPE PROOFS		-3	-2	-1	1	2	3	
Type Merit	2.89	Poor						Excellent
Mammary	2.5	Poor						Excellent
Legs & Feet	2.39	Poor						Excellent
Stature	3.35	Short						Tall
Chest Width	1.09	Narrow						Wide
Body Depth	1.85	Shallow						Deep
Angularity	1.21	Thick						Angular
Rump Angle	-0.91	High Pins						Sloped
Rump Width	1.51	Narrow						Wide
Rear Leg Side	-0.44	Straight						Sickled
Foot Angle	1.9	Low						Steep
Fore Udd Att	2.47	Loose						Tight
Rear Udd Att	2.37	Very Low						Very High
Udd Support	1.96	Broken						Strong
Udd Depth	2.59	Below						20cm Above
Front Teat Pl	1.56	Outside						Close
Teat Length	-0.5	Short						Long
Rear Teat Pl	1.32	Apart						Close
Ease of Milk	0.71	Close						Apart
Locomotion	2.19	Poor						Good
Condition Score	-0.08	Slow						Fast



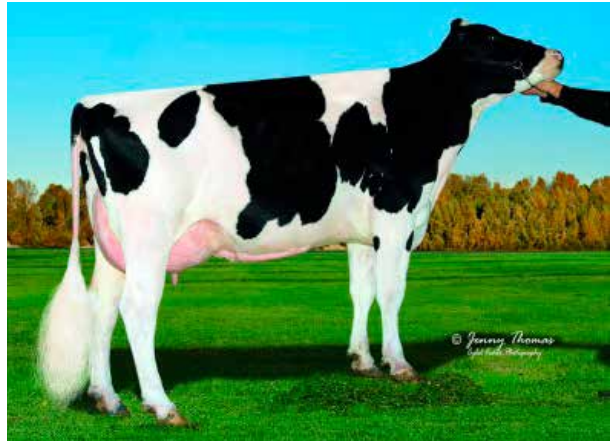
Jordy red Dam- Bryersquart Gchip Jail-P EX90



Jordy Red

Production Proof:		
Milk	(kg)	448
Fat	(kg)	20.3
Fat %		0.03
Protein	(kg)	17.9
Protein %		0.04
Beta Casein		A1A1
PLI		£439
Source:	Holstein UK	
GTP1		+2405

Health Info:		
Somatic Cell C	-11	(69% rel)
Lifespan	0.4	(60% rel)
Fertility	6.0	(62% rel)
D.Calving Ease	0.7	(75% rel)
M.Calving Ease	1.5	(54% rel)



SIRE ANALYSIS:

Dam-Lavish explode Kianna VG86 Kobra is ideal if you want strong powerful cows that have well attached udders. Kobra is an easy calving and high fertility and is sure to produce some outstanding daughters.

He is a complete outcross with no Goldwyn or planet in his pedigree.

SOURCE: INTERBULL GMACE HOLSTEIN UK

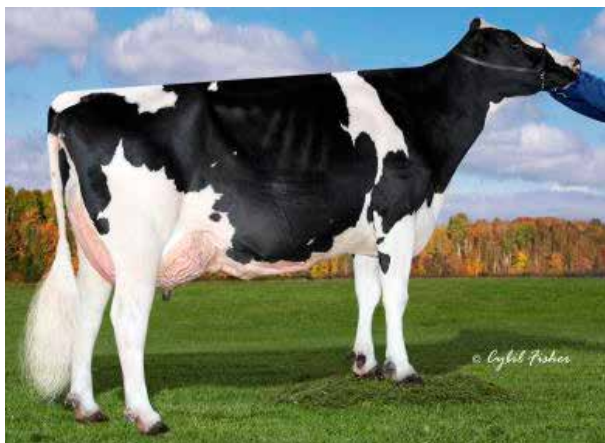
TYPE PROOFS			-3	-2	-1	1	2	3	
Type Merit	1.98	Poor				█			Excellent
Mammary	1.74	Poor				█			Excellent
Legs & Feet	1.31	Poor				█			Excellent
Stature	1.41	Short				█			Tall
Chest Width	1.23	Narrow				█			Wide
Body Depth	0.2	Shallow				█			Deep
Angularity	-0.56	Thick			█				Angular
Rump Angle	0.55	High Pins				█			Sloped
Rump Width	0.79	Narrow				█			Wide
Rear Leg Side	-1.19	Straight			█				Sickled
Foot Angle	1.4	Low				█			Steep
Fore Udd Att	1.67	Loose				█			Tight
Rear Udd Att	1.9	Very Low				█			Very High
Udd Support	0.72	Broken				█			Strong
Udd Depth	1.41	Below				█			20cm Above
Front Teat Pl	1.34	Outside				█			Close
Teat Length	-0.85	Short			█				Long
Rear Teat Pl	1.3	Apart				█			Close
Teat Pos	-0.03	Close			█				Apart
Temperament	1.96	Poor				█			Good
Ease of Milk	0.73	Slow				█			Fast
Locomotion	1.27	Poor				█			Excellent
Condition Score	1.58	Low				█			High



Kobra

Production Proof:		
Milk	(kg)	822
Fat	(kg)	32.6
Fat %		0.00
Protein	(kg)	236
Protein %		-0.01
Beta Casein		A1A1
PLI		£n/a
Source: ADHB Dairy		
GTPI		+2592

Health Info:		
Somatic Cell C	-21	(69 % rel)
Lifespan	0.5	(59 % rel)
Fertility	3.8	(61% rel)
D.Calving Ease	0.1	(64% rel)
M.Calving Ease	1.2	(53 % rel)



SIRE ANALYSIS:

MGD- Kings Ransm Dorc Dextra Mega-Star offers farmers a chance to lift fat components whilst maintaining production. Udders will be neat and well attached carried on excellent legs and feet.

SOURCE: INTERBULL GMACE HOLSTEIN UK

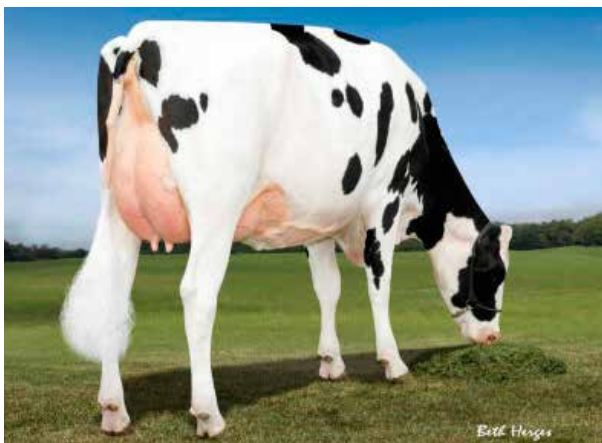
TYPE PROOFS			-3	-2	-1	1	2	3	
Type Merit	2.44	Poor				█			Excellent
Mammary	2.38	Poor				█			Excellent
Legs & Feet	1.62	Poor				█			Excellent
Stature	0.86	Short				█			Tall
Chest Width	0.84	Narrow				█			Wide
Body Depth	0.68	Shallow				█			Deep
Angularity	0.99	Thick				█			Angular
Rump Angle	-0.56	High Pins			█				Sloped
Rump Width	0.91	Narrow				█			Wide
Rear Leg Side	-0.99	Straight			█				Sickled
Foot Angle	0.94	Low				█			Steep
Fore Udd Att	1.84	Loose				█			Tight
Rear Udd Att	2.73	Very Low				█			Very High
Udd Support	1.91	Broken				█			Strong
Udd Depth	1.36	Below				█			20cm Above
Front Teat Pl	1.62	Outside				█			Close
Teat Length	-0.1	Short				█			Long
Rear Teat Pl	1.18	Apart				█			Close
Temperament	1.35	Poor				█			Good
Ease of Milk	0.87	Slow				█			Fast
Locomotion	1.72	Poor				█			Excellent
Condition Score	-0.01	Low				█			High



Mr Mega-Star 54563

Production Proof:		
Milk	(kg)	820
Fat	(kg)	25.4
Fat %		-0.08
Protein	(kg)	21.1
Protein %		-0.06
Beta Casein		A2A2
PLI		£314
Source: Holstein UK		
GTPi		+2406

Health Info:		
Somatic Cell C		-10 (70% rel)
Lifespan		0.3 (61% rel)
Fertility		-0.2 (63% rel)
D.Calving Ease		-2.4 (79% rel)
M.Calving Ease		1.2 (55% rel)



SIRE ANALYSIS:

Full Sister SS Mccutchen son will bring you great dairy heifers with high type and great udders along with good legs and feet and good fertility, plus milk in your tank!

There are a number on the ground now and all are looking strong heifers with a solid frame and fantastic udders

SOURCE: INTERBULL GMACE HOLSTEIN UK

TYPE PROOFS			-3	-2	-1	1	2	3	
Type Merit	2.54	Poor				█	█		Excellent
Mammary	2.44	Poor				█	█		Excellent
Legs & Feet	1.59	Poor				█	█		Excellent
Stature	2.96	Short				█	█	█	Tall
Chest Width	1.26	Narrow				█	█		Wide
Body Depth	1.55	Shallow				█	█		Deep
Angularity	1.56	Thick				█	█		Angular
Rump Angle	-0.89	High Pins			█				Sloped
Rump Width	1.93	Narrow				█	█		Wide
Rear Leg Side	-0.32	Straight			█				Sickled
Foot Angle	1.14	Low				█	█		Steep
Fore Udd Att	2.25	Loose				█	█		Tight
Rear Udd Att	2.29	Very Low				█	█		Very High
Udd Support	2.31	Broken				█	█		Strong
Udd Depth	1.93	Below				█	█		20cm Above
Front Teat Pl	2.06	Outside				█	█		Close
Teat Length	-0.91	Short			█				Long
Rear Teat Pl	1.35	Apart				█	█		Close
Teat Pos	0.76	Close				█	█		Apart
Temperament	0.96	Poor				█	█		Good
Ease of Milk	0.99	Slow				█	█		Fast
Locomotion	1.57	Poor				█	█		Excellent
Condition Score	-0.46	Low			█				High



Dam-Ronelee Hero Donalym

Production Proof:		
Milk	(kg)	906
Fat	(kg)	18.3
Fat %		-0.2
Protein	(kg)	24.4
Protein %		-0.06
Beta Casein		A1A2
PLI		£478
Source: Holstein UK		
GTPI		+2476

Health Info:		
Somatic Cell c		-17 (70% rel)
Lifespan		0.5 (61% rel)
Fertility		3.3 (63% rel)
D.Calving Ease		0.0 (79% rel)
M.Calving Ease		1.0 (54% rel)



SIRE ANALYSIS:

Dam-Pine tree Robust-2149 VG89, If you are looking for a bull that will help lift your milk production and reduce cell count with the added bonus of good fertility and legs and feet..

SOURCE: INTERBULL GMACE HOLSTEIN UK

TYPE PROOFS	-3	-2	-1	1	2	3	
Type Merit	2.24	Poor		██████████			Excellent
Mammary	2.01	Poor		██████████			Excellent
Legs & Feet	1.43	Poor		██████████			Excellent
Stature	0.99	Short		██████████			Tall
Chest Width	-0.81	Narrow	██████████				Wide
Body Depth	-0.94	Shallow	██████████				Deep
Angularity	0.3	Thick	██████████				Angular
Rump Angle	-0.42	High Pins	██████████				Sloped
Rump Width	-0.45	Narrow	██████████				Wide
Rear Leg Side	-0.66	Straight	██████████				Sickled
Foot Angle	0.8	Low		██████████			Steep
Fore Udd Att	2.25	Loose		██████████			Tight
Rear Udd Att	1.64	Very Low		██████████			Very High
Udd Support	0.87	Broken		██████████			Strong
Udd Depth	2.53	Below		██████████			20cm Above
Front Teat Pl	0.63	Outside		██████████			Close
Teat Length	0.47	Short		██████████			Long
Rear Teat Pl	0.77	Apart		██████████			Close
Teat Pos	-0.1	Close		██████████			Apart
Temperament	-0.53	Poor	██████████				Good
Ease of Milk	-0.34	Slow	██████████				Fast
Locomotion	1.19	Poor		██████████			Excellent
Condition Score	-0.65	Low	██████████				High



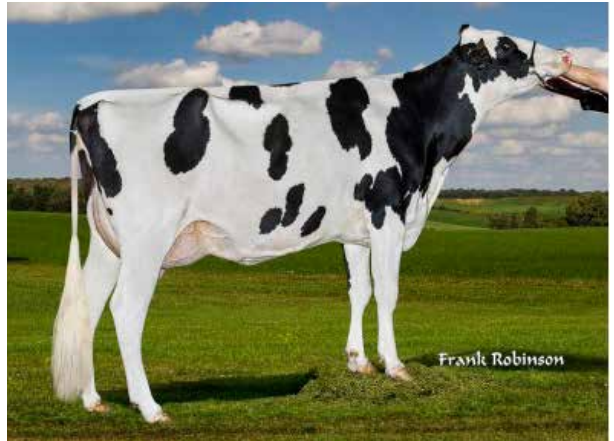
Dam- Pine-Tree 2149 Robst 4846 VG86

DE-SU RANSOM

(ROBUST X VG RAMOS X EX92 SHOTTLE)

Production Proof:		
Milk	(kg)	218
Fat	(kg)	18.0
Fat %		0.12
Protein	(kg)	13.9
Protein %		0.08
Beta Casein		A1A2
PLI		£538
Source:	Holstein UK	
GTP1		+2304

Health Info:		
Somatic Cell C	-17	(87% rel)
Lifespan	0.6	(75% rel)
Fertility	10.9	(84% rel)
D.Calving Ease	0.9	(78% rel)
M.Calving Ease	2.3	(68% rel)



SIRE ANALYSIS:

Ransom is a high PLI bull that offers high fertility and lifespan. He has featured in the top PLI bull shortlist for over a year, proving that he is one of the most robust bulls out there producing functional daughters that will last and produce high component quality milk.

Ransom will sire average size cows with good chest width on good legs and feet with the added value of easy calving.

SOURCE: INTERBULL GMACE HOLSTEIN UK

TYPE PROOFS		-3	-2	-1	1	2	3	
Type Merit	0.94	Poor			█			Excellent
Mammary	0.47	Poor		█				Excellent
Legs & Feet	1.39	Poor			█			Excellent
Stature	0.1	Short		█				Tall
Chest Width	0.97	Narrow			█			Wide
Body Depth	0.13	Shallow		█				Deep
Angularity	-1.17	Thick		█				Angular
Rump Angle	1.03	High Pins			█			Sloped
Rump Width	-0.12	Narrow		█				Wide
Rear Leg Side	-1.14	Straight		█				Sickled
Foot Angle	0.8	Low			█			Steep
Fore Udd Att	0.09	Loose			█			Tight
Rear Udd Att	0.79	Very Low			█			Very High
Udd Support	-0.48	Broken		█				Strong
Udd Depth	-0.22	Below		█				20cm Above
Front Teat Pl	1.12	Outside			█			Close
Teat Length	-1.17	Short		█				Long
Rear Teat Pl	0.86	Apart			█			Close
Teat Pos	-0.38	Close		█				Apart
Temperament	1.8	Poor			█			Good
Ease of Milk	1.11	Slow			█			Fast
Locomotion	1.36	Poor			█			Excellent
Condition Score	1.42	Low			█			High



Daughter- Gepaquette Ransom Ravebeq GP

SARGEANT SEAGULL-BAY SARGEANT ET HCDO

(FREDDIE X EX91 PLANET X VG SHOTTLE)

GENOMIC



Production Proof:		
Milk	(kg)	1180
Fat	(kg)	18.7
Fat %		-0.31
Protein	(kg)	26.1
Protein %		-0.13
Beta Casein		A2A2
PLI		£380
Source: Holstein UK		
GTPI		+2354

Health Info:		
Somatic Cell C		-18 (92% rel)
Lifespan		0.4 (80% rel)
Fertility		3.1 (86% rel)
D.Calving Ease		0.0 (80% rel)
M.Calving Ease		0.8 (69% rel)



SIRE ANALYSIS:

If you're looking to produce milk, and lots of it, consider Sargeant! With 1180kgs of milk with the added bonus of plus fertility and lifespan, Sargeant is a superb all round milky bull without an extreme stature. His daughters will be "bulk tank on legs". He will give you good chest width and wide rumps with a solid frame and black calves

SOURCE: INTERBULL GMACE HOLSTEIN UK

TYPE PROOFS			-3	-2	-1	1	2	3	
Type Merit	1.89	Poor				██████████			Excellent
Mammary	1.88	Poor				██████████			Excellent
Legs & Feet	0.96	Poor				██████████			Excellent
Stature	0.44	Short			██████████				Tall
Chest Width	1.64	Narrow				██████████			Wide
Body Depth	-0.1	Shallow			██████████				Deep
Angularity	0.5	Thick				██████████			Angular
Rump Angle	0.0	High Pins					██████████		Sloped
Rump Width	1.76	Narrow				██████████			Wide
Rear Leg Side	-0.72	Straight			██████████				Sickled
Foot Angle	0.62	Low				██████████			Steep
Fore Udd Att	1.39	Loose					██████████		Tight
Rear Udd Att	2.04	Very Low					██████████		Very High
Udd Support	0.81	Broken				██████████			Strong
Udd Depth	0.59	Below				██████████			20cm Above
Front Teat Pl	0.35	Outside			██████████				Close
Teat Length	0.07	Short			██████████				Long
Rear Teat Pl	0.58	Apart				██████████			Close
Teat Pos	0.67	Close				██████████			Apart
Temperament	1.24	Poor				██████████			Good
Ease of Milk	0.66	Slow			██████████				Fast
Locomotion	0.99	Poor				██████████			Excellent
Condition Score	0.85	Low				██████████			High



Lactomont Nikoto Sargeant VG85 (2yr)



Daughter-Redama Sargeant Label VG86

Production Proof:		
Milk	(kg)	740
Fat	(kg)	295
Fat %		0.0
Protein	(kg)	22.7
Protein %		-0.08
Beta Casein		A1A1
PLI		n/a
Source: ADHB Dairy		
GTP1		+2710

Health Info:		
Somatic Cell c	-7	(64 % rel)
Lifespan	0.5	(54 % rel)
Fertility	74	(50 % rel)
D.Calving Ease	0.6	(48 % rel)
M.Calving Ease	1.8	(29 % rel)



SIRE ANALYSIS:

MGGD-No Fla Ramos Haven 2032 Taz has an impressive sire stack being a son of EDG Rubicon. Daughters will have the longevity with excellent health traits as well as him scoring well on solid feet and legs (+2.08)

SOURCE: INTERBULL GMACE HOLSTEIN UK

TYPE PROOFS			-3	-2	-1	1	2	3	
Type Merit	1.87	Poor				█			Excellent
Mammary	1.35	Poor				█			Excellent
Legs & Feet	2.08	Poor				█			Excellent
Stature	1.0	Short				█			Tall
Chest Width	1.66	Narrow				█			Wide
Body Depth	0.67	Shallow				█			Deep
Angularity	0.40	Thick				█			Angular
Rump Angle	0.18	High Pins				█			Sloped
Rump Width	0.21	Narrow				█			Wide
Rear Leg Side	-1.09	Straight			█				Sickled
Foot Angle	1.02	Low				█			Steep
Fore Udd Att	1.07	Loose				█			Tight
Rear Udd Att	0.94	Very Low				█			Very High
Udd Support	0.95	Broken				█			Strong
Udd Depth	0.7	Below				█			20cm Above
Front Teat Pl	0.96	Outside				█			Close
Teat Length	1.23	Short				█			Long
Rear Teat Pl	0.84	Apart				█			Close
Ease of Milk	0.75	Slow				█			Fast
Locomotion	1.89	Poor				█			Excellent
Condition Score	0.99	Low				█			High



Taz

Production Proof:		
Milk	(kg)	754
Fat	(kg)	16.4
Fat %		-0.15
Protein	(kg)	16.6
Protein %		-0.09
Beta Casein		A1A1
PLI		£392
Source: Holstein UK		
GTPI		+2504

Health Info:		
Somatic Cell c		-21 (69% rel)
Lifespan		0.5 (59% rel)
Fertility		5.1 (60% rel)
D.Calving Ease		-0.6 (64% rel)
M.Calving Ease		1.3 (53% rel)



SIRE ANALYSIS:

He is a 1stclass son with really impressive type and mammary figures. He comes with high milk production and fertility and a cell count improver.

SOURCE: INTERBULL GMACE HOLSTEIN UK

TYPE PROOFS			-3	-2	-1	1	2	3	
Type Merit	3.34	Poor				██████████	██████████	██████████	Excellent
Mammary	3.46	Poor				██████████	██████████	██████████	Excellent
Legs & Feet	1.45	Poor				██████████	██████████	██████████	Excellent
Stature	2.44	Short				██████████	██████████	██████████	Tall
Chest Width	0.71	Narrow				██████████	██████████	██████████	Wide
Body Depth	0.84	Shallow				██████████	██████████	██████████	Deep
Angularity	0.82	Thick				██████████	██████████	██████████	Angular
Rump Angle	-0.79	High Pins			██████████	██████████	██████████	██████████	Sloped
Rump Width	0.59	Narrow				██████████	██████████	██████████	Wide
Rear Leg Side	-0.32	Straight			██████████	██████████	██████████	██████████	Sickled
Foot Angle	1.32	Low				██████████	██████████	██████████	Steep
Fore Udd Att	3.3	Loose				██████████	██████████	██████████	Tight
Rear Udd Att	3.35	Very Low				██████████	██████████	██████████	Very High
Udd Support	2.6	Broken				██████████	██████████	██████████	Strong
Udd Depth	3.22	Below				██████████	██████████	██████████	20cm Above
Front Teat Pl	2.04	Outside				██████████	██████████	██████████	Close
Teat Length	-0.22	Short			██████████	██████████	██████████	██████████	Long
Rear Teat Pl	1.75	Apart				██████████	██████████	██████████	Close
Teat Pos	0.56	Close			██████████	██████████	██████████	██████████	Apart
Temperament	1.23	Poor				██████████	██████████	██████████	Good
Ease of Milk	0.98	Slow				██████████	██████████	██████████	Fast
Locomotion	1.4	Poor				██████████	██████████	██████████	Excellent
Condition Score	-0.12	Low			██████████	██████████	██████████	██████████	High



1st Grade-Full sister to Dam- Farnear-Tbr-Bh Georgia-ET VG-87



1st Grade-Full sister-Farnear Gabrielle Gabby-ET

Production Proof:		
Milk	(kg)	408
Fat	(kg)	14.3
Fat %		-0.04
Protein	(kg)	71
Protein %		-0.09
Beta Casein		A2A2
PLI		£159
Source: Ayrshire Cattle Society		
PTI		+473

Health Info:		
Somatic Cell c	-4	(76% rel)
Lifespan	0.4	(37% rel)
Fertility	-3.1	(58% rel)
Maintenance	13	
M.Calving Ease	1.8	(29% rel)



SIRE ANALYSIS:

Predator is a solid bull with good improvement in milk and a big improvement in Fat which will be produced in well attached lasting udders. Daughters are coming into the herds now, showing great depth of body and fantastic udders

SOURCE: INTERBULL GMACE HOLSTEIN UK

TYPE PROOFS			-3	-2	-1	1	2	3	
Type Merit	1.7	Poor				█			Excellent
Mammary	2.0	Poor				█			Excellent
Legs & Feet	0.9	Poor				█			Excellent
Stature	2.4	Short				█			Tall
Chest Width	-1.6	Narrow		█					Wide
Body Depth	-0.1	Shallow			█				Deep
Angularity	1.9	Thick				█			Angular
Rump Angle	0.6	High Pins				█			Sloped
Rump Width	1.6	Narrow				█			Wide
Rear Leg Side	-0.2	Straight			█				Sickled
Foot Angle	0.7	Low				█			Steep
Fore Udd Att	2.4	Loose				█			Tight
Rear Udd Att	1.2	Very Low				█			Very High
Udd Support	1.8	Broken				█			Strong
Udd Depth	1.8	Below				█			20cm Above
Front Teat Pl	-0.3	Outside			█				Close
Teat Length	0.3	Short			█				Long
Rear Teat Pl		Apart				█			Close
Teat Pos	1.5	Close				█			Apart



Daughter



Predator

Angus Male sorted semen
Available in **SexedULTRA4M™**



Quaker Hill DISCIPLE

151AN01421 DOB: 19/09/14

Aid cashflow by increasing male beef calves born on farm

High fertility straws with SexedUltra 4M containing 4 million sorted healthy sperm cells



NORBRECK AA

TWO GREAT SIRES :
ONE VERY FERTILE STRAW



TONLEY PELE M841 &
TONLEY JUNINHO J618 ARE
BOTH EXCITING PROSPECTS WITH EBV'S IN THE TOP
PERCENTILE FOR ALL GROWTH TRAITS, EYE MUSCLE AREA,
RETAIL BEEF YIELD, TERMINAL INDEX AND SELF REPLACING
INDEX MAKING THESE TWO BULLS AN INCREDIBLE

ANGUS TEAM

AI = MS8139

KAPRICO ERAVELLE

SIRE: WILODGE TONKA

DAM: KAPRICO RAVELLE

AI CODE:LN2332

TAG: UK305117 300242



UK'S NUMBER 1 CALVING EASE
LIMOUSIN BULL (EBV +8)

CALVES EASILY BORN FROM
DAIRY COWS

QUALITY CALVES THAT SELL
WELL AT AN EARLY AGE

HIGH FERTILITY SIRE TO
IMPROVE CONCEPTION RATES



facilitated by

01606 869253

Sorbreck TRIPLE POWER

HARNESS THE
POWER...

AI CODE # MS8077

...HARNESS THE
POTENTIAL

...HARNESS THE
PROFIT



SEIFION
CARDI

EXTRA FERTILITY

SHORT GESTATION LENGTH
EASY CALVING ASSURED.



GOODYHILLS
EMPORER

NEWPOLE
CHALKY
WHITE



facilitated by 01606 869253

Importers of Quality Livestock and Milk Replacers

TAG-UK are Facilitated by The Calf Company Europe Ltd and in the ever changing and fast paced industry of Agriculture there is a growing need for businesses within the industry to move forward and grow at an ever increasing pace, all as economically and efficiently as possible.

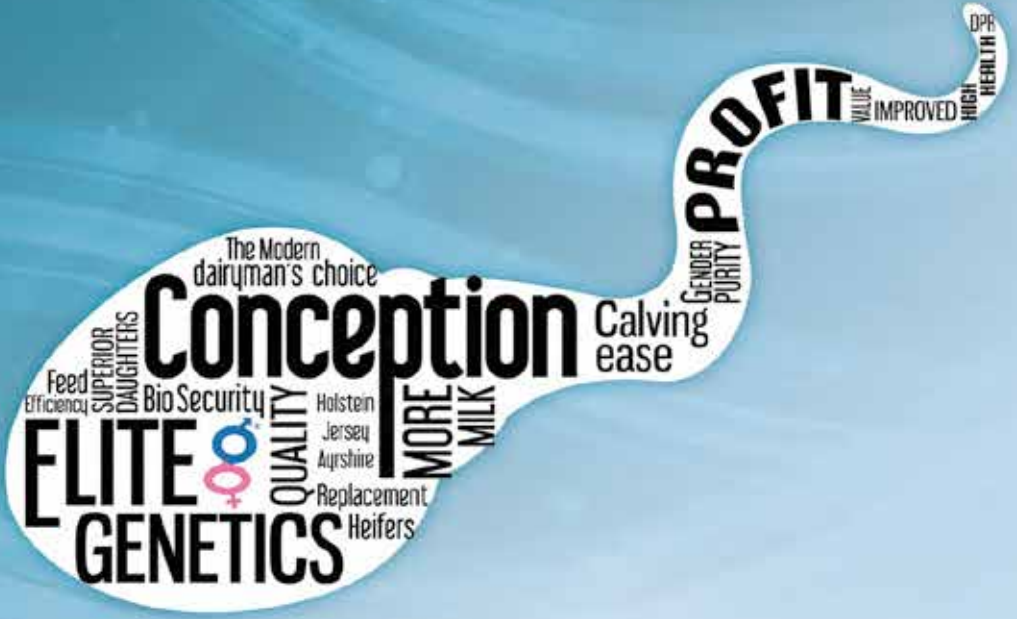
With our milk replacers and all of our products we source the highest quality and best value for money products available. Our suppliers offer a full traceability package guaranteeing product safety and security. The full range of milk replacers have been formulated to perform under UK market conditions and have been tested in all feeding systems to ensure their performance. We aim to offer you the support, advice and services to assist in the growth and development of your livestock.

We pride ourselves on a completely professional and personal approach to purchasing dairy replacements from around Europe, from the booking of the trip (all expenses paid), sourcing of the cattle to the delivery of them to your farm for a long productive life.

Our services include -

- **Livestock Imports**
- **TAG UK Genetics**
- **Milk Replacers**
- **Supplementary Products**
- **Quality Reared Calves**
- **Livestock Health & Advice**

www.thecalfcompany.com



OUT OF HOURS 24/7

CONTACT TEL - 07812 663167

Because your business starts at conception...

www.thecalfcompany.com

Sexed **ULTRA** **4M**™

THE CALF COMPANY (EUROPE) LTD.

Lime House, 2 Road Two, Winsford, Cheshire, CW7 3QZ