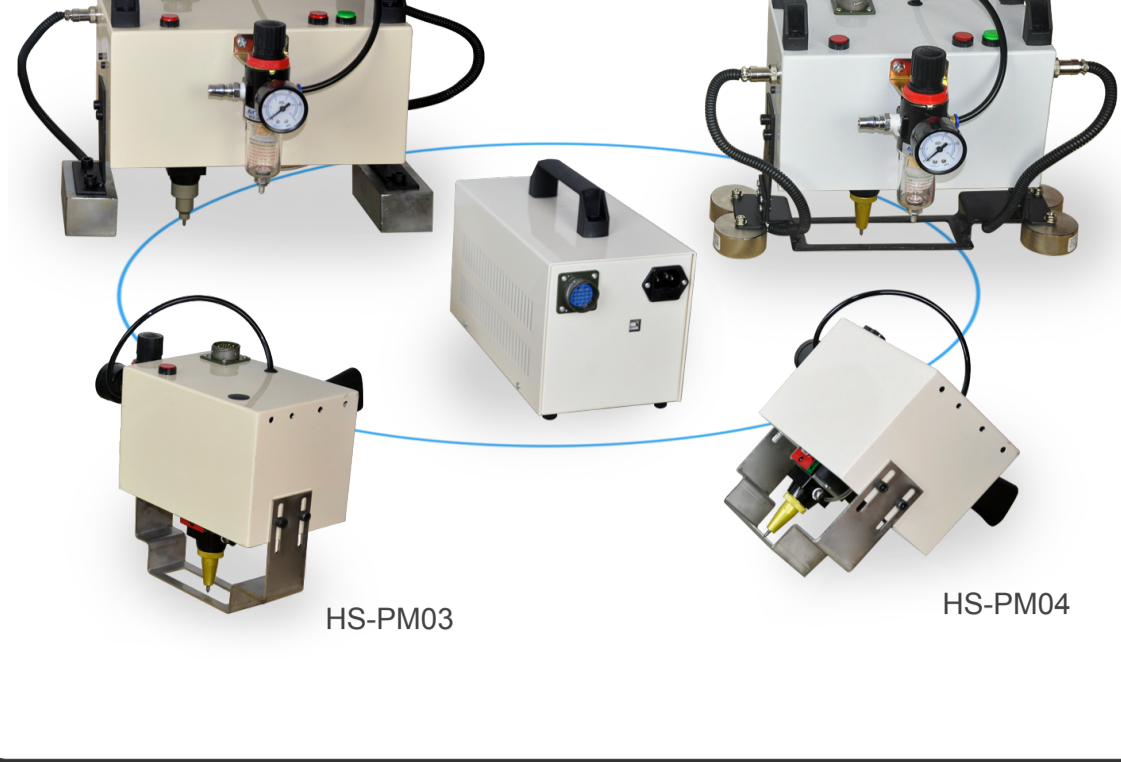


Portable Dot Peen Marking Machine (HS-PM)

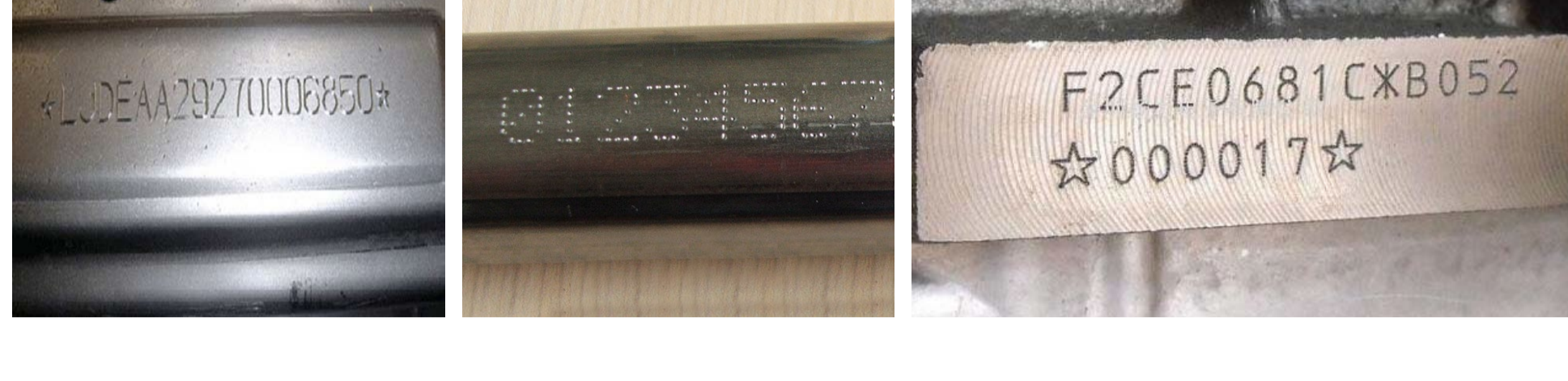


HS-PM series

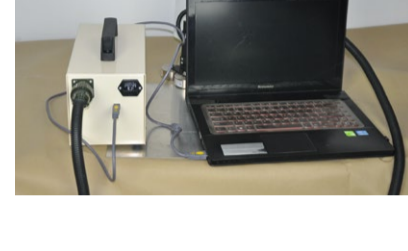
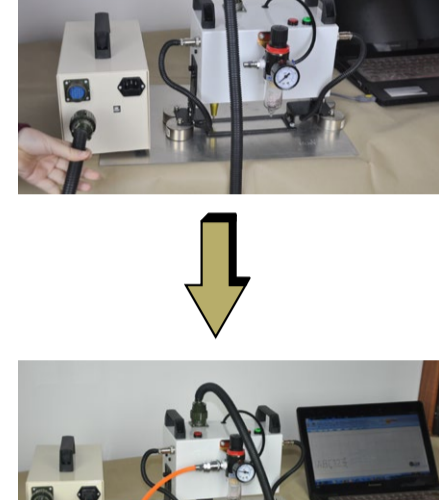
- Marking Area: 150mm x 50mm (HS-PM01)
With electromagnetic basement
- Marking Area: 120mm x 40mm (HS-PM02)
With frame electromagnetic basement
- Marking Area: 80mm x 25mm (HS-PM03)
With frame window basement
- Marking Area: 50mm x 25mm (HS-PM04)
With frame window basement

Portable Dot Peen Marking System

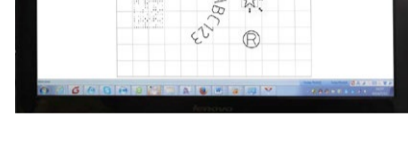
The HS-PM Series Portable Dot Peen Marking System is designed for marking heavy, large metal parts such as car chassis and VIN numbers. The machine need work with a PC and air power. The lightweight portable head and a small size controller take portability to another level. It enables direct part marking on product surfaces, using hard pins that can handle hardness of up to HRC 60.



The KT Marking Dot Peen technology ensures direct impact of the marking pin on the product surface, leading to clear and permanent marks. Round Text Marking and 2D Datamatrix codes etc. is made possible through our software.



- Offers standard X-Y motion
- Enhanced stability with the imported stepper motor
- The Dot Peen marking system requires air power
- PC is required. This system comes with a USB connection, software and cable
- Hardened alloy tungsten marking pins provide deep and clear marking



Features & Benefits

Performance

- Deep marking with hard alloy tungsten pins
- High marking precision and accuracy
- Marks on various materials in a variety of applications
- Marking speed of 30mm – 40mm/s
- Marks with ease up to a hardness of 60 HRC

Ease of Use

- Compact and easy to install
- Robust shell offers strong shock resistance
- Easy to operate. No training required
- Low maintenance with 1-year marking-pin life
- Low electrical consumption

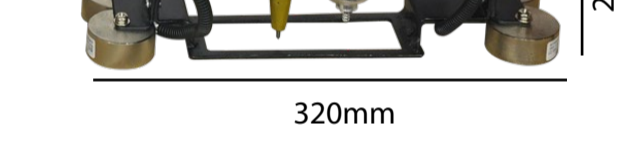
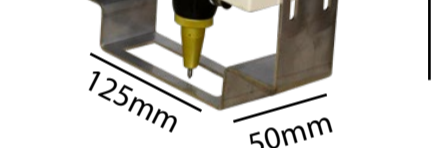
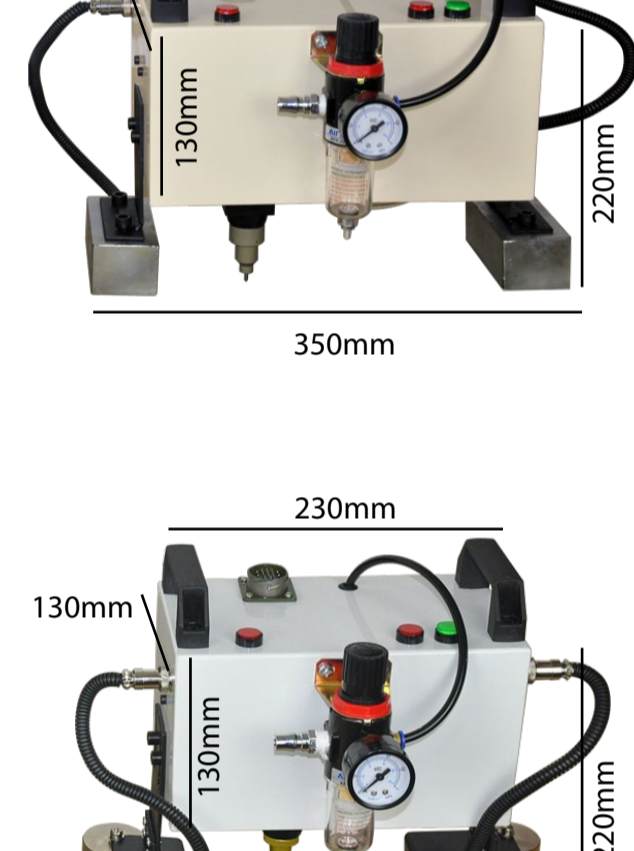
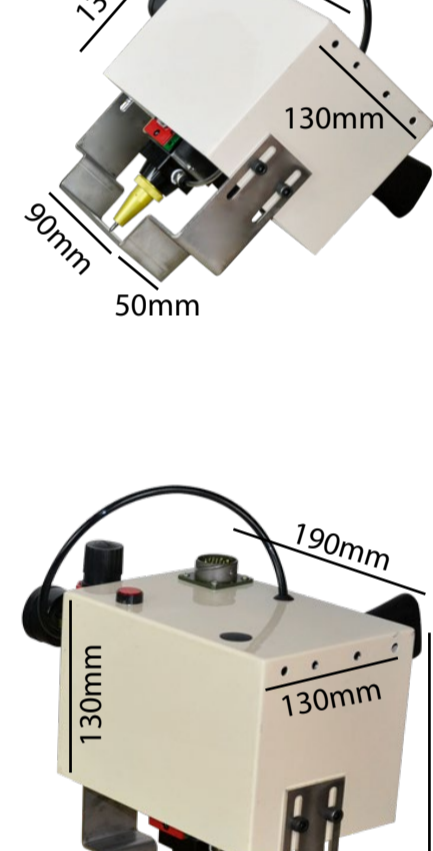
Portability

- Lightweight marking head
- High flexibility
- CNC controller eliminates the need for PC

Customization

- Marking window sizes as required
- Electromagnetic basement offers stability

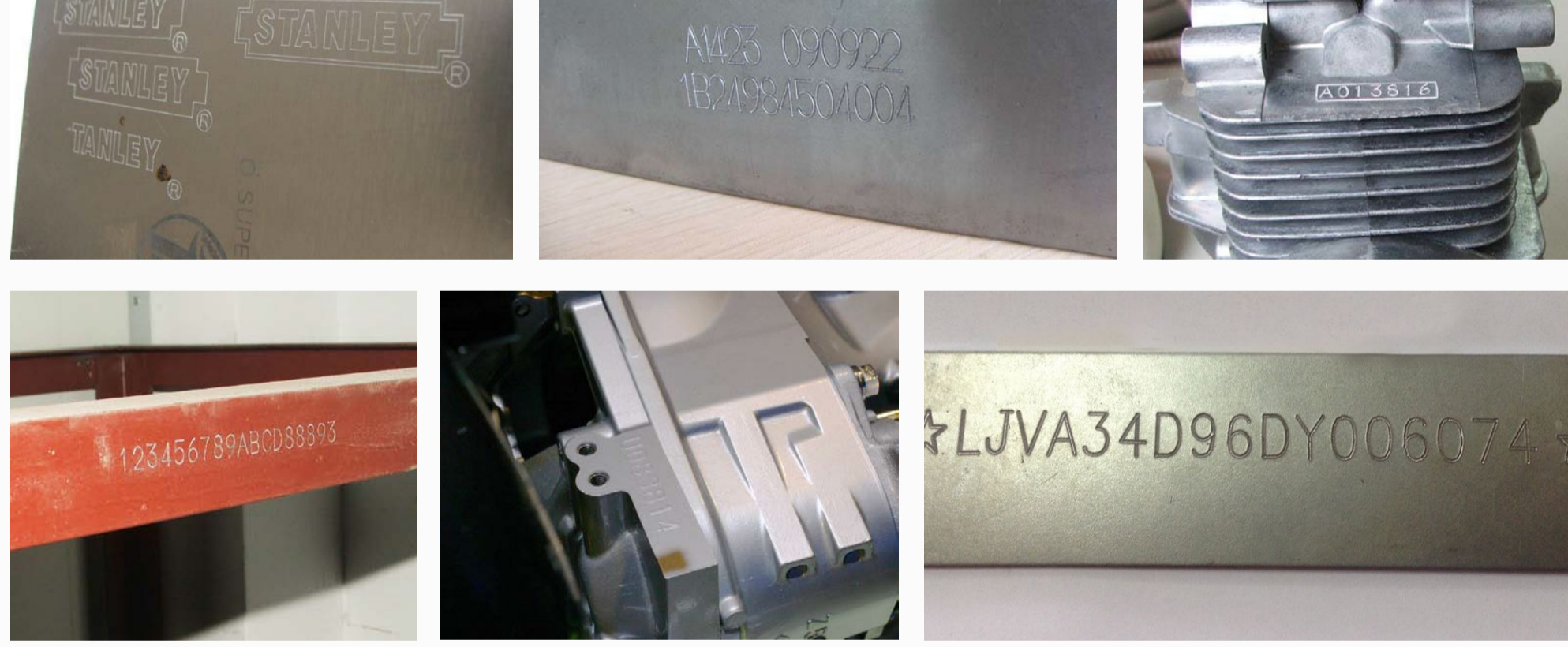
Applications



Model	HS-PM01	HS-PM02	HS-PM03	HS-PM04
Standard Marking Area	150mm x 50mm/120mm x 40mm/80mm x 25mm/50mm x 25mm			
Base Support	Electromagnetic basement	Frame and electromagnetic basement	Frame window basement	Frame window basement
Marking Speed	30mm~40mm/s			
Impact Frequency	300 times/s			
Repeated Accuracy	0.001mm			
Marking Depth	0.1mm~2mm (depends on material)			
Power Supply	AC220V 50Hz or AC110V 60HZ			
Air Power Request	0.2Mpa~0.6Mpa			
Humidity	0-90% (Non-condensing)			
Temperature	From 0 to 40 Centigrade Degree.			
Marking Content	English characters, number, all kinds of graphic, logo, dot matrix 2D codes, Barcode, Serial Number, circle Letter and etc.			
Software Compatible	Windows 98/XP/7 32bit (KT-PB series integrate software, keyboard and screen, no need connect to PC)			

Applications

The HS-PM Series Portable Dot Peen marking engraving machine is suitable for a wide-range of industries. It fulfills the marking needs of Aerospace, Electronics, Metal Processing, Vehicle, Medical and other industries. It offers unparalleled efficiency and accuracy.



Marking

- Direct Part Marking (DPM)
- Component Identification & Traceability
- VIN code/numbers
- Serial Numbering
- Lot Numbering
- Metal marking and engraving (Aluminum, steel, copper etc.)
- Plates, tags, labels and pipes
- Logos
- Cast & Forge
- Security codes
- Health & safety appliances
- Time & date
- Equipment parts

Options & Accessories



Frame base window
Customizes the marking window for marking specific areas



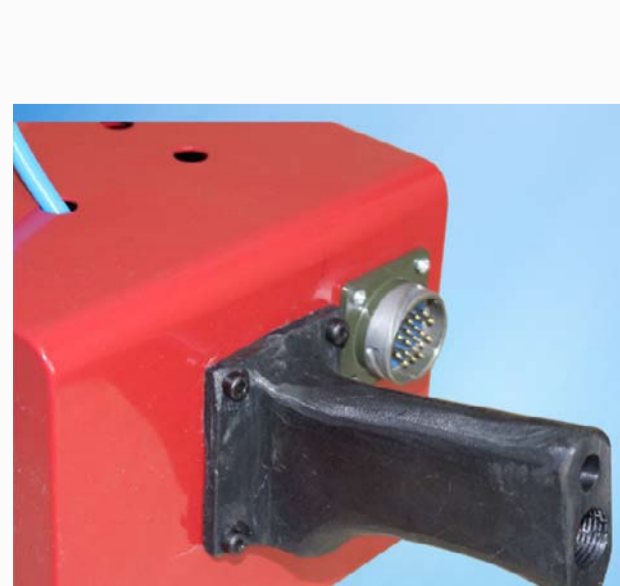
Electromagnetic basement
Gives the marking head a better hold on the product



Marking pins
A choice of 4 designs



V basement
For tube and pipe marking



Rotary device

For customization as per your requirements, please contact us at: