

AUGER DRIVES SKID STEER LOADER



www.clfab.com
712-542-5500
CL FAB

4DSS
Standard flow, Max torque 3,821 FT-LBS
\$3350

4DDS
High flow, Max torque 4,180 FT-LBS
\$4060

PACKAGE PRICE INCLUDES HOSES,
FF QUICK DISCONNECTS, UNIVERSAL SKID
STEER SIDE SHIFT MOUNT & LINKAGE

- Compact high torque planetary gearbox with Eaton motor
- 2 Piece shaft design ensures maximum side load ratings without increasing load on bearings
- **5-year gear box and 3-year motor warranty / lifetime shaft pull-out warranty**

CL Fabrication Inc.
420 S 8th St, PO Box 200
Clarinda Iowa 51632
712-542-5500



Side shift mount is standard



01-13-22

AUGER DRIVES SKID STEER LOADER



www.cfab.com
712-542-5500
CFAB

AUGER BITS

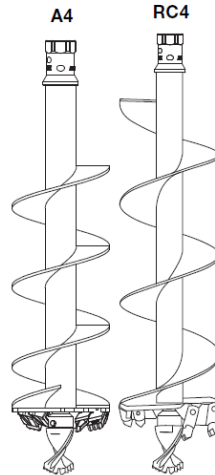
TREE PLANTER

TP	TREE PLANTING AUGER		
ORDER CODE	OVERALL DIA	TAP ROOT DIA	LIST PRICE
TP-12-06-3-E	12"	6"	\$935
TP-16-08-3-E	16"	8"	\$1,110
TP-20-10-3-E	20"	10"	\$1,340
TP-24-12-3-E	24"	12"	\$1,520
TP-28-14-3-E	28"	14"	\$1,710
TP-32-16-3-E	32"	16"	\$1,900
TP-36-18-3-E	36"	18"	\$2,550
TP-48-24-3-MFT	48"	24"	\$3,690

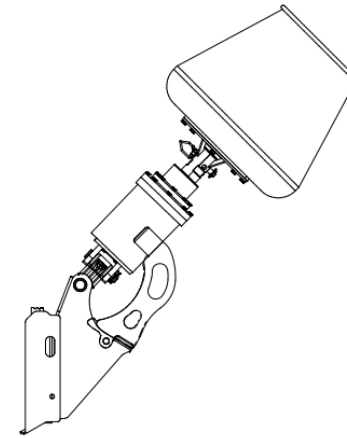


A4 & RC4

4FT OAL	A4-GENERAL PURPOSE AUGER		RC4-ROCK/EARTH COMBO AUGER		RC4-ROCK/EARTH COMBO AUGER	
	LIGHT CONDITIONS EARTH		HEAVY CONDITIONS MFT - HARD GROUND		FRACTURABLE ROCK / EARTH CLAY / SHALE	
DIA	ORDER CODE	LIST PRICE	ORDER CODE	LIST PRICE	ORDER CODE	LIST PRICE
6"	A4-06-3-E	\$425	A4-06-3-MFT	\$455	RC4-06-3-MFT	\$745
8"	A4-08-3-E	\$460	A4-08-3-MFT	\$570	RC4-08-3-MFT	\$755
9"	A4-09-3-E	\$470	A4-09-3-MFT	\$595	RC4-09-3-MFT	\$775
10"	A4-10-3-E	\$540	A4-10-3-MFT	\$620	RC4-10-3-MFT	\$860
12"	A4-12-3-E	\$545	A4-12-3-MFT	\$640	RC4-12-3-MFT	\$905
14"	A4-14-3-E	\$650	A4-14-3-MFT	\$710	RC4-14-3-MFT	\$1,015
16"	A4-16-3-E	\$780	A4-16-3-MFT	\$870	RC4-16-3-MFT	\$1,160
18"	A4-18-3-E	\$840	A4-18-3-MFT	\$950	RC4-18-3-MFT	\$1,190
20"	A4-20-3-E	\$920	A4-20-3-MFT	\$1,060	RC4-20-3-MFT	\$1,310
24"	A4-24-3-E	\$1,060	A4-24-3-MFT	\$1,200	RC4-24-3-MFT	\$1,550
30"	A4-30-3-E	\$1,310	A4-30-3-MFT	\$1,430	RC4-30-3-MFT	\$2,340
36"	A4-36-3-E	\$1,560	A4-36-3-MFT	\$1,710	RC4-36-3-MFT	\$2,750



INCLUDES PIN, CLIP, TEETH & PILOT



Turn your auger drive into a cement mixer

Capacity
5.7 cubic feet, 42 gallons
Fits 2" hex drive
Includes cradle adapter
Fits CL Fab drives

\$850



**EXTENTIONS
INCLUDE A PIN & CLIP**

AUGER EXTENSIONS

X020 TO SUIT A4 & RC4 BITS

OUTER EXTENTIONS

ORDER CODE	DESCRIPTION	LIST PRICE
X020IH-2F	2 FOOT OUTER EXTENSION - 2" HEX	\$350
X020IH-3F	3 FOOT OUTER EXTENSION - 2" HEX	\$365
X020IH-4F	4 FOOT OUTER EXTENSION - 2" HEX	\$385
X020IH-6F	6 FOOT OUTER EXTENSION - 2" HEX	\$430
X020IH-8F	8 FOOT OUTER EXTENSION - 2" HEX	\$455