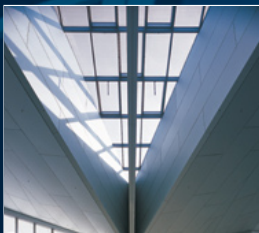


wrightstyle<sup>llc</sup>

High Performance Steel & Glass Systems • Complete & Guaranteed

## GLASS PRODUCT OVERVIEW



# HIGH PERFORMANCE SPECIALIST GLASS



## Company Overview

Wright Style Ltd design test and supply a wide range of specialist architectural glass, to compliment their steel and stainless steel glazing systems.

Our involvement in the architectural systems market is extensive, with global knowledge in the specification, testing, development and supply of glass products, which are designed to be used in association with our glazing systems.

These glass products are available through our network of international licensed fabricators, giving architects and end users the advantage of quality assured local installation.



## FIRE RESISTANT GLASS - Definitions.

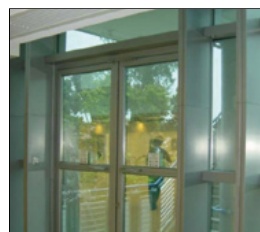
There are two distinct types of fire resistant glass. Integrity Only prevents the passage of fire through an assembly for a given time period. Depending on the application and required specification this can be for 30 minutes or 60 minutes. Our range of Integrity Only glasses to meet this requirement is WSL G-Glass.

Integrity and Insulation, not only stops the fire but also radiant heat, to protect escape routes and building boundaries from the spread of fire. This type of glass is also available to cope with a range of time spans i.e. 30 minutes, 60 minutes, 90 minutes and 120 minutes. Our range of Integrity and Insulation glasses to meet this requirement, is the WSL F-Glass.

## INTEGRITY ONLY - WSL G-GLASS

The G-Glass is available in a wide range of options. WSL G-Glass is produced under the float glass process, resulting in high levels of optical quality. It is a non-wired fire resistant glass and can be installed using gaskets or tape products.

Most importantly, due to the fully tempered makeup, WSL G-Glass can be pressure glazed into curtain walling, without the fear of cracking or breakage.



# product over



## ..... Additional Benefits

- WSL G-Glass is also a class A safety glass as defined under BS 6206. It has been extensively performance tested and successfully used throughout the world.
- As a toughened safety glass it can be used in conditions where barrier loadings or heavy body impact has to be taken into consideration.

**In-depth specifications and tested dimensions – please see our website at [www.wrightstyle.co.uk](http://www.wrightstyle.co.uk) - Specialist Glass section.**

The product range includes:

### **WSL G30**

- 6mm fire resistant toughened glass. Used for 30 minutes integrity only applications; for glazing into steel framed fire resistant systems.

### **WSL G30 DGU Double Glazed Sealed Units**

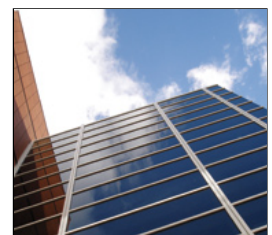
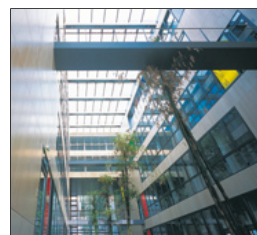
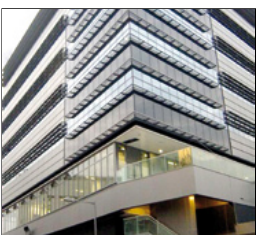
- Sealed units which are available in either 20mm or 24mm standard thickness. Used for 30 minutes integrity only applications. Any type of solar control or low E glass can be incorporated into the sealed units.

### **WSL G60**

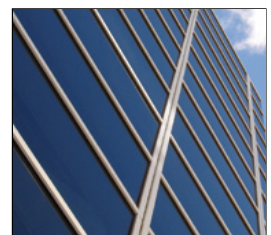
- 6mm fire resistant coated toughened glass. Used for both 30 and 60 minute integrity only applications; for glazing into steel framed fire resistant systems.

### **WSL G60 DGU Double Glazed Sealed Units**

- Sealed units are available in either 20mm or 24mm standard thickness. Used for either 30 minute or 60 minute integrity only applications. Any type of solar control or low E glass can be incorporated into the sealed units.



# view



## **INTEGRITY and INSULATION - WSL F-GLASS**

WSL F-Glass is a range of fire resistant insulating glasses, for combined integrity and insulation protection, as defined under international test criteria.

WSL F-Glass comprises of two layers toughened float glass, filled between with a clear, UV stable, fire resisting heat reactive gel.

In the event of a fire, the clear gel reacts to the heat, and forms a barrier against the passage of flame and radiant heat through the glass. This type of glass is commonly used to protect building evacuation routes, the vulnerable areas of adjacent buildings, or where the prevention of fire spread - caused by radiant heat - is of prime importance.

WSL F-Glass is a non-wired fire resistant toughened glass, which can be used for 30, 60, 90 & 120 minutes applications, where integrity and insulation are required, and can be glazed into a variety of approved fire resistant systems.

The WSL F - Glass is produced under the float glass process, resulting in high levels of optical quality. It can be installed using gaskets or tape products, and can be glazed into timber or steel systems without the need for special adhesive glazing methods.

### **..... Additional Benefits**

- F glass can be pressure glazed into curtain walling without the fear of cracking or breakage due to the fully tempered makeup.
- Any type of solar control or low E glass can be incorporated into a sealed unit.

The product range includes:

30 minute applications	60 minute applications
90 minute applications	120 minute applications

Full details, thicknesses, specifications, and tested dimensions etc., are available on our website at [www.wrightstyle.co.uk](http://www.wrightstyle.co.uk) in the Specialist Glass section.

## **WSL B -BALLISTIC GLASS**

To compliment the Wright Style ballistic glazing systems, we offer a complete range of bullet resistant glass, tested for all classes of weapons to the following international standards.

- CEN 1063 BR1 to BR7
- BS5051 G1 to R2ap
- STANAG 4569 Level 1 to 3
- DIN 52290 Levels 1 to 5
- UL752-1991
- UNE 108-131086 levels 1 to 5

WSL B-Glass is produced using the latest combination of glass and polycarbonate technology, in order to reduce the weight associated with all glass constructions.

In addition, we can also build the WSL B-Glass into sealed units to accommodate any type of solar control or low E glass.

WSL B-Glass is produced in thickness from 17mm to 103mm dependant on the threat level required. It is available in the following two main categories, to suit the level of protection required.

- Low-Spall On impact, minimum amount of small glass fragmentations to the safe side.
- No-Spall On impact, total prevention of small glass fragmentation to the safe side.

Specifications and recommendations are available on an individual enquiry basis.



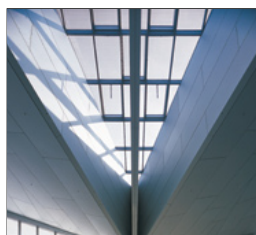
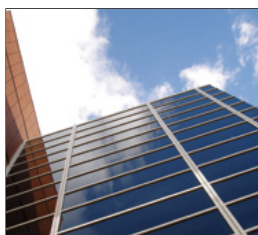
## BLAST RESISTANT GLASS

### WSL BL-Glass

Designed as a primary protection product for use in our tested glazing systems, WSL BL-Glass prevents the fragmentation associated with normal glass, which is widely acknowledged as the main cause of injury when a building is subject to an explosive attack.

It is constructed using a plastic medium that can remain elastic under load. WSL BL-Glass provides both retention of broken glass and flying debris. This is in addition to absorbing and dispersing the impact pressure wave.

Glass make up and testing information is project confidential, but specifications & recommendations are available on an individual enquiry basis.





wrightstyle<sup>ltd</sup>

■ Tel +44 (0)1380 722239 ■ Fax +44 (0)1380 721734  
■ Web [www.wrightstyle.co.uk](http://www.wrightstyle.co.uk) ■ Email [info@wrightstyle.co.uk](mailto:info@wrightstyle.co.uk)

