



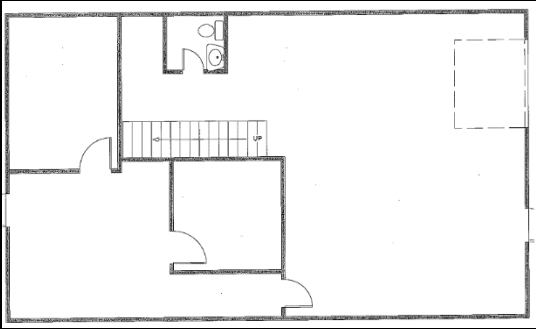
NEARCTIC PLAZA

11604 – 145 Street
Edmonton, AB

UNIT 11608



- 1,450 square feet and bonus mezzanine, available July 1, 2019
- Grade level door is 14' x 12'
- Space was renovated in 2017
- Open reception/showroom area, boardroom, 1 office, mezzanine storage, warehouse area and 1 washroom
- Net Asking Rate of \$9.00 per square foot
- 2019 Estimated Operating Costs of \$6.55 per square foot. Utilities and Janitorial extra.



“GIDDY UP!”

CALL OR EMAIL COURTNEY STRONG AT 780.413.0865 OR COURTNEY@NEARCTIC.COM

DISCLAIMER: This drawing is for illustrative and informational purposes only. The drawing is not to scale, and may not be exact, and therefore should not be solely relied upon.